


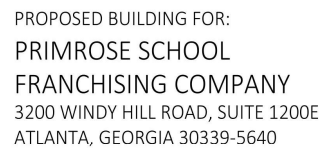
- 
- A close-up photograph of a stone wall, showing various shades of grey, tan, and brown stones with visible mortar joints. The texture is rough and uneven.



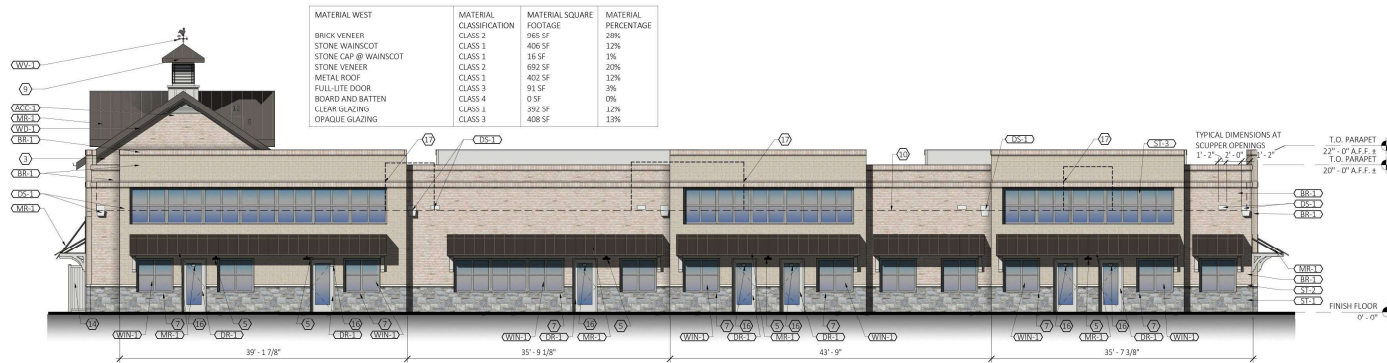
1. *Journal of the American Medical Association*, 2000; 283: 2686-2692.



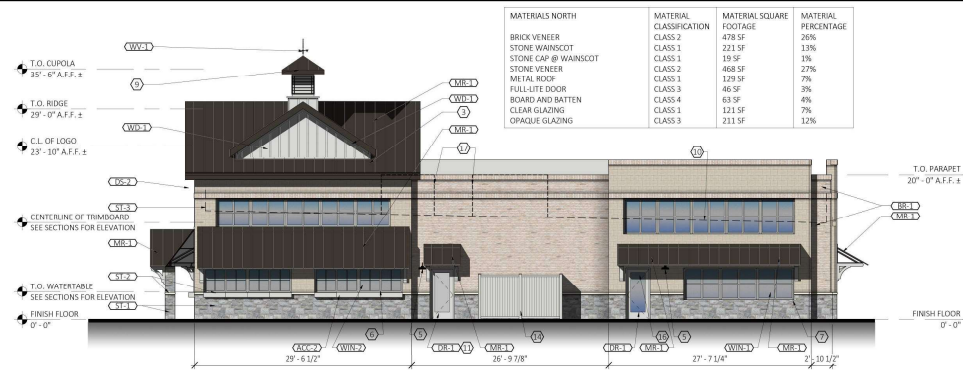
EXTERIOR FINISH LEGEND		
MARK	DESCRIPTION	SPECIFICATION
ACC-1	LOUVERS	EKEMA MILLWORK: 65"W X 21 3/4"H X 1 1/4"P, PITCH 8:12 TRIANGLE GABLE VENT, NON-FUNCTIONAL. ITEM NO. GVT65X21D (COLOR TO MATCH "ARCTIC WHITE")
ACC-2	WINDOW BOX	PLOW & HEARTH: LEXINGTON SELF-WATERING WINDOW BOX, 3'-0". COLOR: ANTHRACITE.
ACC-3	SHUTTERS	EKENS MILLWORK: TWO BATTEN W/2-BAR BOARD & BATTEN COMPOSITE SHUTTERS. 3'-6" x 1'-6"W. SHUTTERS TO BE ORDERED PRIMED, PAINT TO MATCH "AGED PEWTER"
BR-1	BRICK VENEER	AUTHENTIC BRICK; THIN BRICK VENEER; STYLE "COTTONWOOD"
DR - 1	FULL LITE DOOR	EXTERIOR INSULATED METAL FULL LITE DOOR : COLOR (INTERIOR & EXTERIOR): WHITE. SEE DOOR SCHEDULE FOR ADDITIONAL INFORMATION.
DS - 1	SCUPPERS, DOWNSPOUTS	BM COLOR REVIEW #OC - 21 WINTER WHITE. (COLOR TO MATCH "ARCTIC WHITE"): 6" GUTTERS AND 6" DOWN SPOUTS U.N.O.
DS - 2	GUTTERS ALONG METAL ROOF	COLOR: TO MATCH "MR - 1"
MR-1	METAL ROOF	BERRIDGE CEE-LOCK SYSTEM. COLOR: DARK BRONZE.
ST-1	STONE WAINSCOT	US STONE - SAINT CLARE, PLAZA GRAY. MACHINE SPLIT RUBBLE VENEER. GROUT: BUFF COLORED MORTAR
ST-2	STONE CAP @ WAINSCOT	CORONADO: CHISELED STONE SILL. COLOR: LIGHT GREY.
ST-3	STONE VENEER	CORONADO: SMOOTH LIMESTONE. COLOR: HARVARD GREY
TRIM	MISC METAL TRIM & FLASHING	ANY MISC METAL FLASHING AND TRIM NOT NOTED AS TRIM-1 SHOULD MATCH COLOR OF ADJACENT SURFACE. CONTACT ARCHITECT FOR DIRECTION AS REQ'D.
TRIM-1	MTL TRIM @ METAL ROOF	BM COLOR REVIEW #OC - 21 WINTER WHITE. (COLOR TO MATCH "ARCTIC WHITE")
WD-1	BOARD AND BATTEN SIDING	HARDIE PANEL (4" X 10') AND HARDIE TRIM BATTEN BOARDS (2 1/2" WIDE @ 16" O.C.) FINISH: SMOOTH. COLOR: ARCTIC WHITE (PRIMED AND FIELD PAINTED).
WIN - 1	VINYL WINDOWS	ANDERSEN: SILVERLINE 2200 SERIES. COLOR: WHITE. SEE WINDOW SCHEDULE.
WIN - 2	VINYL WINDOWS (@ OFFICE)	ANDERSEN: 100 SERIES. COLOR: WHITE. SEE WINDOW SCHEDULE
WV-1	WEATHER VANE	LARGE COPPER ROOSTER WEATHERVANE. SEE 1A/A6.3 FOR ADDITIONAL INFORMATION.



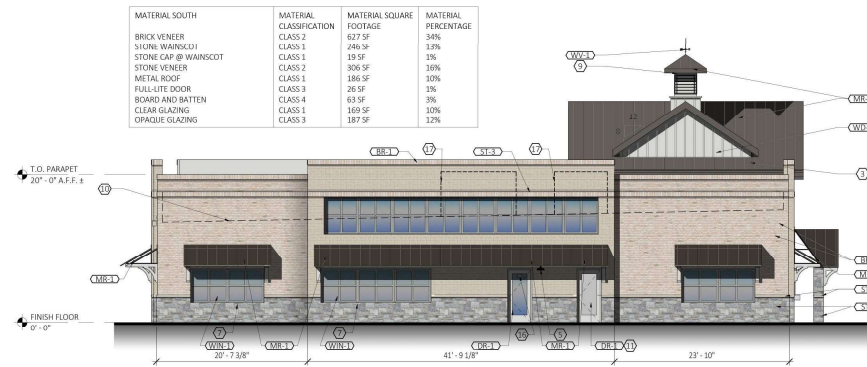
Prototype "The Erwin"  
Olathe, KS 66062  
04/22/24



WEST ELEVATION



NORTH ELEVATION



SOUTH ELEVATION



PROPOSED BUILDING FOR:  
**PRIMROSE SCHOOL**  
**FRANCHISING COMPANY**  
 3200 WINDY HILL ROAD, SUITE 1200E  
 ATLANTA, GEORGIA 30339-5640

**COLORLED ELEVATIONS**  
**PRIMROSE SCHOOL**  
 Prototype "The Erwin"  
 Olathe, KS 66062  
 04/22/24

12 Sunnen Drive, Suite 100  
 St. Louis, MO 63143  
 o: 314.821.1100

CASCO











