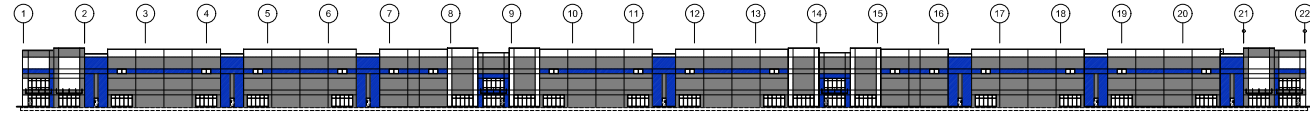


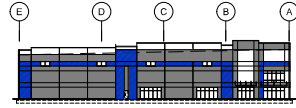
1 Floor Plan
scale: 1" = 50'-0"
north



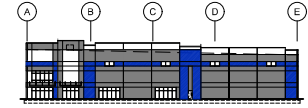
2 East Elevation - Primary
scale: 1" = 50'-0"



3 West Elevation - Secondary
scale: 1" = 50'-0"



5 South Elevation - Primary
scale: 1" = 50'-0"



4 North Elevation - Primary
scale: 1" = 50'-0"

Exterior Materials and Finishes:

concrete @ us panels:		glass:
	P1 - color: White Sherwin Williams SW7063 Nebulous White	1" insulated double-pane glass with low-E coating and argon fill *use SOLARBAN 70 as basis (to meet U-value .28 and SHGC value 0.27) *insulated metal cap, flashing, gutters, downspouts, and scoops: color: Finesse Charcoal Gray Prefabricated prefinished metal canopies, Mapes, Skycape or equal color: Charcoal Gray exterior hollow metal doors and frames paint to match adjacent wall: Pro Industrial High Performance Epoxy, semi-gloss, 1 coat primer, 2 coats paint to cover, colors: SW7075 Web Gray and SW7074 Software Paint interior side of doors and frames SW7056 Reserved White
	P2 - color: Light Gray Sherwin Williams SW7011 Gray Screen	bolts: galvanized, paint safety yellow
	P3 - color: Medium Gray Sherwin Williams SW7074 Software	prefinished metal: prefinished, manufacturer's standard gray
	P4 - color: Blue Accent Sherwin Williams Medium Blue (TBD)	locusts: prefinished to match adjacent wall color
	Sherwin Williams Corflex UltraCrete advenr bone coating (medium texture) or by equal manufacturer such as TexCote 300 Ultra-Tex is the basis of design for texture on all concrete panels. Finish paint SW A-102 Exterior Latex Flat or TexCote D.F. Color Coat shall be installed over texture coat per manufacturer's recommendations.	deck walls: dark gray prefinished, manufacturer's standard gray
	stair: Skaflex 2C or equal, caulking colors selected to match adjacent walls	deck levelings: prefinished, manufacturer's standard gray
	storefront: anodized aluminum frame, color: clear	

A new development for
DRG Olathe
21855 W. 167th Street
Olathe, Kansas

date: 03.16.2026
drawn by: DAE
checked by: DAE
revisions:

sheet number:
A3.1
drawing type:
PDP
project number:
25110

Building 1 - East Facade - Primary (52,968 tot. SF)			
Material Name	Material Class	Material Square Footage	Material Percentage
Tilt-up concrete panel patterned with v-vevals and color changes	Class II	47,776 sf	90.2%
Clear Glazing	Class I	5,192 sf	9.8%
Clear Glazing at ground floor (to 24")		4,880 sf	17.8%

Building 1 - South Facade - Primary (10,731 tot. SF)			
Material Name	Material Class	Material Square Footage	Material Percentage
Tilt-up concrete panel patterned with v-vevals and color changes	Class II	9,743 sf	90.8%
Clear Glazing	Class I	988 sf	9.2%
Clear Glazing at ground floor (to 24")		860 sf	15.5%

Building 1 - North Facade - Primary (10,731 tot. SF)			
Material Name	Material Class	Material Square Footage	Material Percentage
Tilt-up concrete panel patterned with v-vevals and color changes	Class II	9,743 sf	90.8%
Clear Glazing	Class I	988 sf	9.2%
Clear Glazing at ground floor (to 24")		860 sf	15.5%

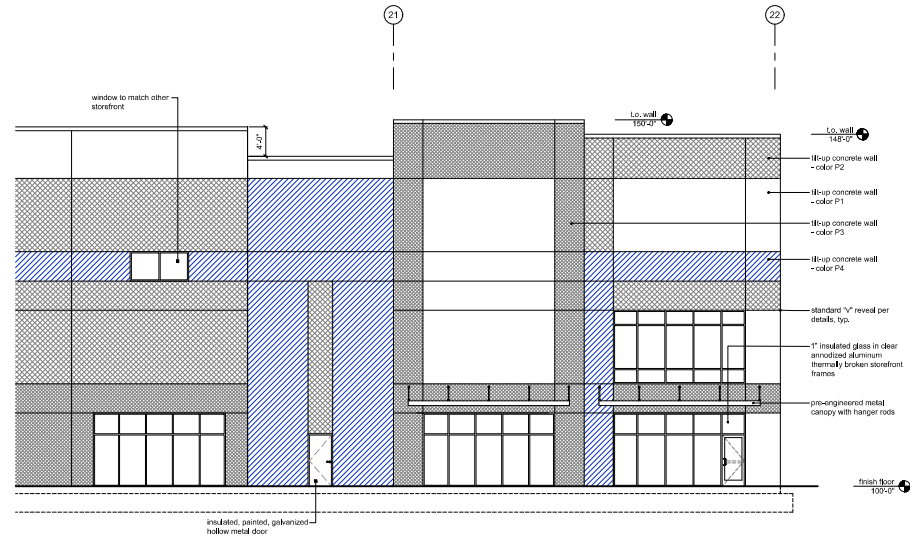
Building 1 - West Facade - Secondary (44,535 tot. SF)			
Material Name	Material Class	Material Square Footage	Material Percentage
Tilt-up concrete panel patterned with v-vevals and color changes	Class II	34,182 sf	76.8%
Tilt-up concrete with horizontal v-vevals and color change	Class II	3,759 sf	8.4%
Clear Glazing	Class I	456 sf	1%
Metal Panel (garage doors)	Class IV	6,138 sf	13.8%

Exterior Materials and Finishes:

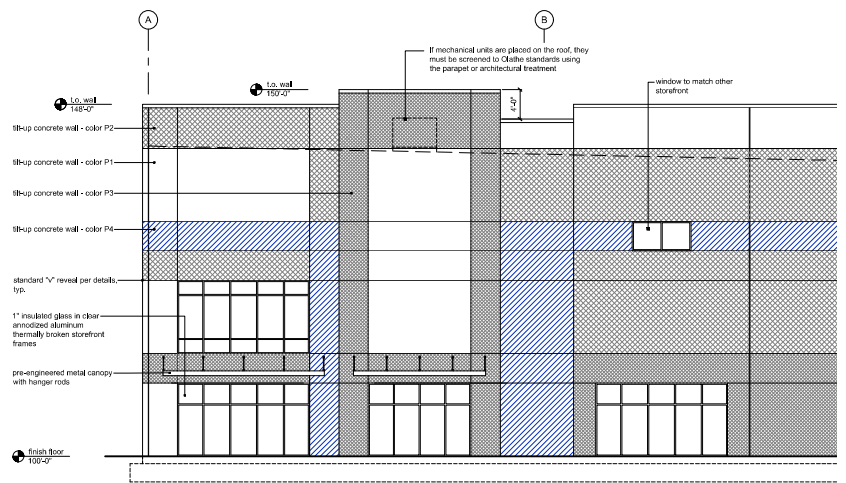
- concrete tilt-up panels:**
- P1 - color: White
Sherwin Williams SW7063 Nebulous White
 - P2 - color: Light Gray
Sherwin Williams SW7071 Gray Screen
 - P3 - color: Medium Gray
Sherwin Williams SW7074 Software
 - P4 - color: Blue Accent
Sherwin Williams Medium Blue (TBD)
- Sherwin Williams CorFlex Ultra-Crete solvent borne coating (medium texture) or by equal manufacturer such as Teco-Cole 300 Ultra-Tex is the basis of design for texture on all concrete panels. Finish paint SW A-100 Exterior Latex Flat or Teco-Cole DFC Color Coat shall be installed over texture coat per manufacturer's recommendations.
- caulk:**
Sikaflex 2C or equal, caulking colors selected to match adjacent walls
- storefront:**
anodized aluminum frame, color: clear

- glass:**
1" insulated clear glass with low-E coating and argon fill
*use SOLARBAN 70 as base (to meet U-value: 28 and SHGC value 0.27)
- profirished metal cap, flashing, awnings, downspouts, and scoopers:**
color: 1. FirstStone Charcoal Gray
2. ProFinish profirished metal cap, awnings, downspouts, and scoopers
color: Charcoal Gray
- exterior hollow metal doors and frames paint to match adjacent wall:**
Pro Industrial High Performance Epoxy, semi-gloss, 1 coat primer, 2 coats paint to doors, colors: SW7073 Web Gray and SW7074 Software
Paint interior side of doors and frames SW7056 Reserved White
- bolts:**
galvanized, paint safety yellow
- overhead doors:**
profirished, manufacturer's standard gray
- louvers:**
profirished to match adjacent wall color
- deck walls:**
dark gray
- deck ledges:**
profirished, manufacturer's standard gray

- a) All exterior-mounted and all rooftop building HVAC and mechanical equipment, vents, piping, roof access ladders, and utility meters must be located out of view or otherwise screened from public view from all adjacent streets. Screening must be accomplished with landscaping, screen walls, building elements, or a combination of these methods.
- b) Exterior ground-mounted or building-mounted equipment including, but not limited to, mechanical equipment, utilities, meter banks and coolers must be screened from public view with three sided landscaping or with an architectural treatment compatible with the building architecture.
- c) All signage must comply with UDO 16.50.100 and must be approved through a separate application.



1 Enlarged East Elevation
scale: 1/8" = 1'-0"

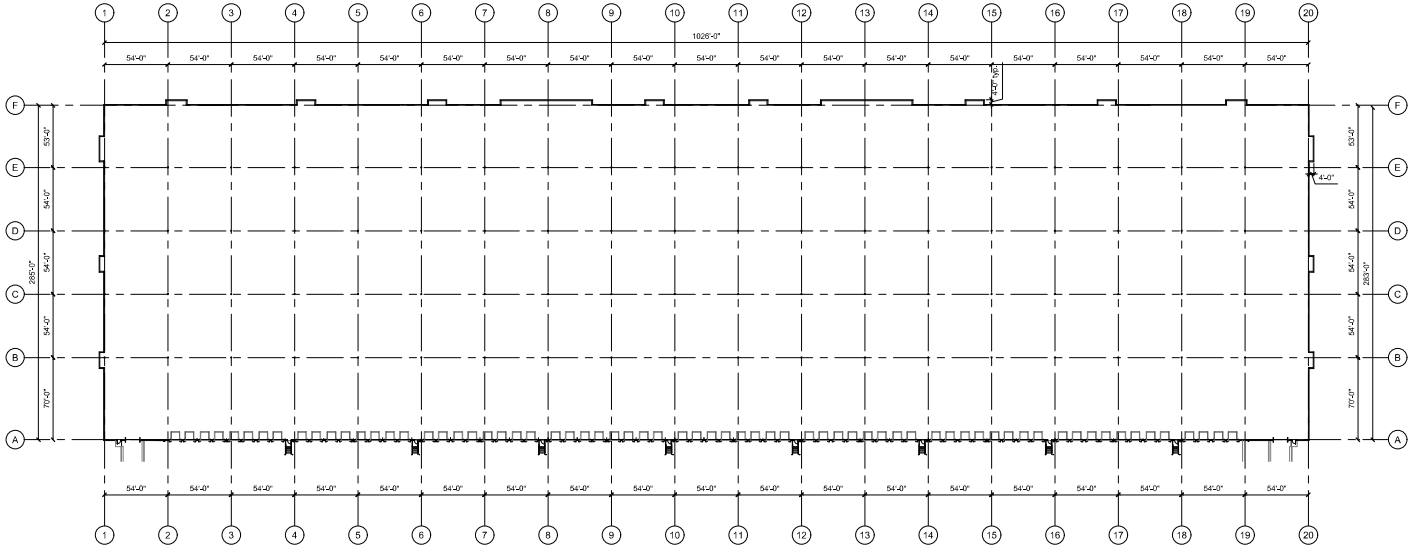


2 Enlarged North Elevation
scale: 1/8" = 1'-0"

A new development for
DRG Olathe
21855 W. 167th Street
Olathe, Kansas

date: 03.16.2026
drawn by: DAE
checked by: DAE
revisions: 04.01.2026

sheet number: **A3.2**
drawing type: PDP
project number: 25110



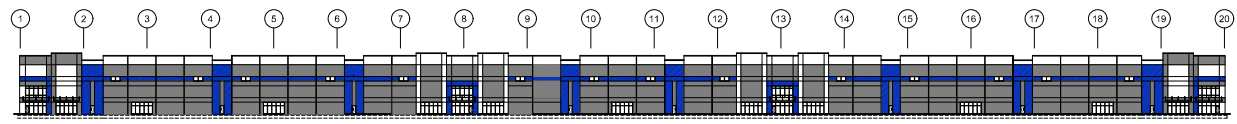
1 Floor Plan
scale: 1" = 50'-0"
north

Exterior Materials and Finishes:

- concrete fill up panels:
- P1 - color: White
Sherwin Williams SW7063 Nebulous White
- P2 - color: Light Gray
Sherwin Williams SW7071 Gray Screen
- P3 - color: Medium Gray
Sherwin Williams SW7074 Software
- P4 - color: Blue Accent
Sherwin Williams Medium Blue (TBD)

Sherwin Williams Corflex UltraCrest solvent borne coating (medium texture) or by equal manufacturer such as TenCote 200 UltraTex is the basis of design for texture on all concrete panels. Finish paint SW A-100 Exterior Latex Flat or TenCote D-F Color Coat shall be installed over texture coat per manufacturer's recommendations.

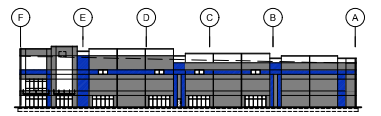
- caulk:**
Sikaflex 2C or equal, caulking colors selected to match adjacent wall structures
- storefronts:**
anodized aluminum frame, color: clear
- glass:**
1" insulated clear/leer glass with low-E coating and argon fill
Use SOLARGARD 70 as basis to meet U-value .20 and SHGC value 0.27
prefinished metal casework, awnings, storm doors, and accessories
color: F. Finestone Charcoal Gray
Prefabricated perforated metal canopies, Mapes, Skyscape or equal
color: Charcoal Gray
exterior hollow metal doors and frames paint to match adjacent wall
Pro Industrial High Performance Epoxy, semi-gloss, (1 coat primer, 2 coats paint to cover), colors: SW7075 Web Gray and SW7074 Software
Paint interior side of doors and frames SW7066 Reserved White
- beliefs:**
galvanized, paint safety yellow
- overhead doors:**
prefinished, manufacturer's standard gray
- housers:**
prefinished to match adjacent wall color
- dock seats:**
dark gray
- dock levelers:**
prefinished, manufacturer's standard gray



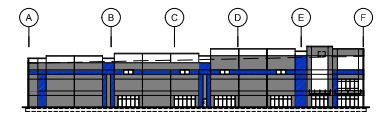
2 West Elevation - Primary
scale: 1" = 50'-0"



3 East Elevation - Secondary
scale: 1" = 50'-0"



5 South Elevation - Primary
scale: 1" = 50'-0"



4 North Elevation - Primary
scale: 1" = 50'-0"

A new development for
DRG Olathe
21855 W. 167th Street
Olathe, Kansas

date: 03.16.2026
drawn by: DAE
checked by: DAE
revisions: △

sheet number:
A3.3
drawing type:
PDP
project number:
25110

Building 2 - East Facade - Secondary (28,535 tot. SF)			
Material Name	Material Class	Material Square Footage	Material Percentage
Tilt-up concrete panel patterned with veneals and color changes	Class II	25,974 sf	67.4%
Tilt-up concrete with horizontal veneals and color change	Class II	2,437 sf	6.3%
Clear Glazing	Class I	498 sf	1.1%
Metal Panel (garage doors)	Class IV	9,716 sf	25.2%

Building 2 - South Facade - Primary (13,597 tot. SF)			
Material Name	Material Class	Material Square Footage	Material Percentage
Tilt-up concrete panel patterned with veneals and color changes	Class II	12,159 sf	90%
Clear Glazing	Class I	1,348 sf	10%
Clear Glazing at ground floor (to 24')		1,220 sf	17.7%

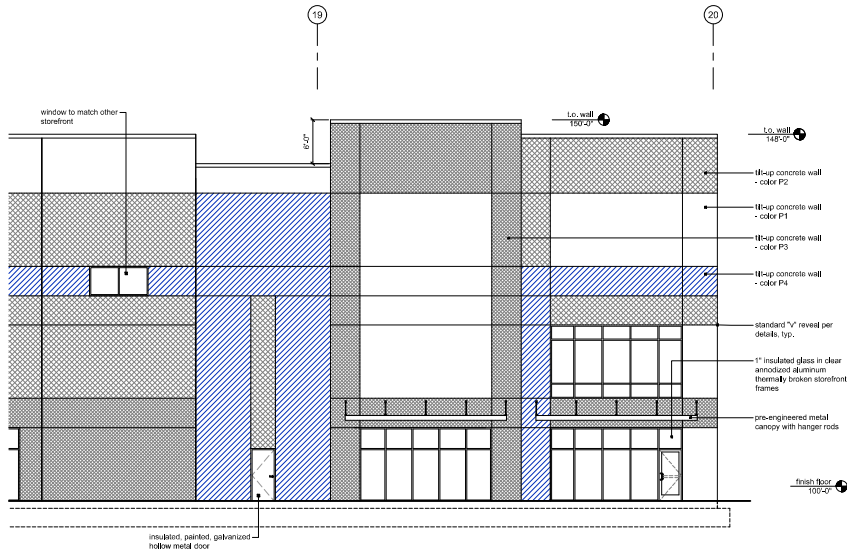
Building 2 - West Facade - Primary (91,126 tot. SF)			
Material Name	Material Class	Material Square Footage	Material Percentage
Tilt-up concrete panel patterned with veneals and color changes	Class II	47,260 sf	52.5%
Clear Glazing	Class I	3,836 sf	7.5%
Clear Glazing at ground floor (to 24')		3,420 sf	16.1%

Building 2 - North Facade - Primary (13,597 tot. SF)			
Material Name	Material Class	Material Square Footage	Material Percentage
Tilt-up concrete panel patterned with veneals and color changes	Class II	12,159 sf	90%
Clear Glazing	Class I	1,348 sf	10%
Clear Glazing at ground floor (to 24')		1,220 sf	17.7%

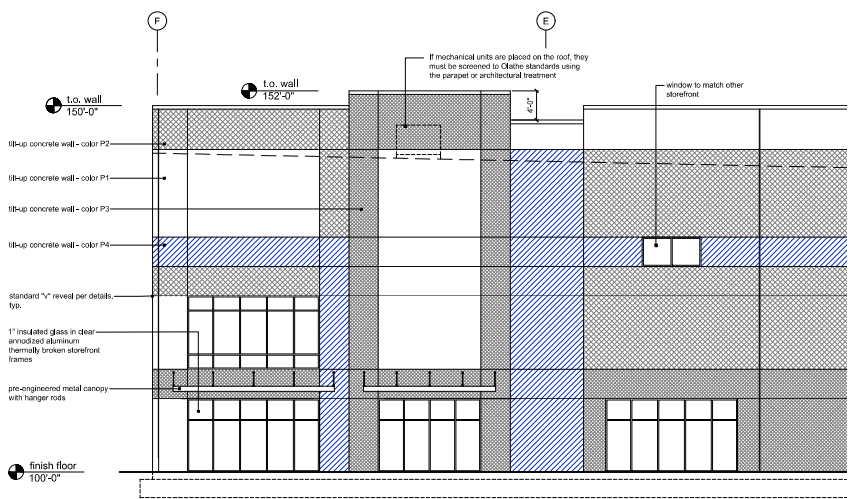
Exterior Materials and Finishes:

- concrete tilt-up panels:**
- P1 - color: White
Sherwin Williams SW7063 Nebulous White
 - P2 - color: Light Gray
Sherwin Williams SW7071 Gray Screen
 - P3 - color: Medium Gray
Sherwin Williams SW7074 Software
 - P4 - color: Blue Accent
Sherwin Williams Medium Blue (TBD)
- Sherwin Williams ConFlex UltraCrete solvent borne coating (medium texture) or by equal manufacturer such as Tex-Cote 300 Ultra-Tex is the basis of design for texture on all concrete panels. Finish paint SW A-100 Solvent Latex Flat or Tex-Cote D.F. Color Coat shall be installed over texture coat per manufacturer's recommendations.
- metal:**
Stainless 2C or equal, caulking colors selected to match adjacent walls.
- standards:**
anodized aluminum frame, color: clear
- glass:**
1" insulated clear/leer glass with low-E coating and argon fill
*use SOLARBAN 70 as basis (to meet U-value, 28 and SHGC value 0.27)
- insulated metal cap flashing, gutters, downspouts, and sdrains:**
color: 1" Pristine Charcoal Gray
Prestalco color prefinished metal canopies, Mauve, Skycape or equal.
- color:** Charcoal Gray
- exterior hollow metal doors and frames paint to match adjacent wall:**
Pro Industrial High Performance Epoxy semi-gloss, 1 coat primer, 2 coats paint to cover, colors: SW7073 Web Gray and SW7074 Software
Paint interior side of doors and frames SW7006 Reserved White
- bolts:**
galvanized, paint safety yellow
- finished doors:**
prefinished, manufacturer's standard gray
- hardware:**
prefinished to match adjacent wall color
- lock seals:**
dark gray
- door hardware:**
prefinished, manufacturer's standard gray

- a) All exterior-mounted and all rooftop building HVAC and mechanical equipment, vents, piping, roof access ladders, and utility meters must be located out of view or otherwise screened from public view from all adjacent streets. Screening must be accomplished with landscaping, screen walls, building elements, or a combination of these methods.
- b) Exterior ground-mounted or building-mounted equipment including, but not limited to, mechanical equipment, utility meter banks and coolers must be screened from public view with three sided landscaping or with an architectural treatment consistent with the building architecture.
- c) All signage must comply with UDO 15.50.100 and must be approved through a separate application.



1 Enlarged West Elevation - Primary
scale: 1/8" = 1'-0"



4 Enlarged South Elevation - Primary
scale: 1/8" = 1'-0"

A new development for
DRG Olathe
21855 W. 167th Street
Olathe, Kansas

date: 03.16.2026
drawn by: DAE
checked by: DAE
revisions:

sheet number
A3.4
drawing type: PDP
project number: 25110



1 Typical Corner
 not to scale



2 Typical Corner - Evening
 not to scale



3 Typical Mid-section
 not to scale

A new development for
DRG Olathe
 21855 W. 167th Street
 Olathe, Kansas

date
 03.16.2026
 drawn by
 DAE
 checked by
 DAE
 revisions



sheet number
A3.5
 drawing type
 PDP
 project number
 25110