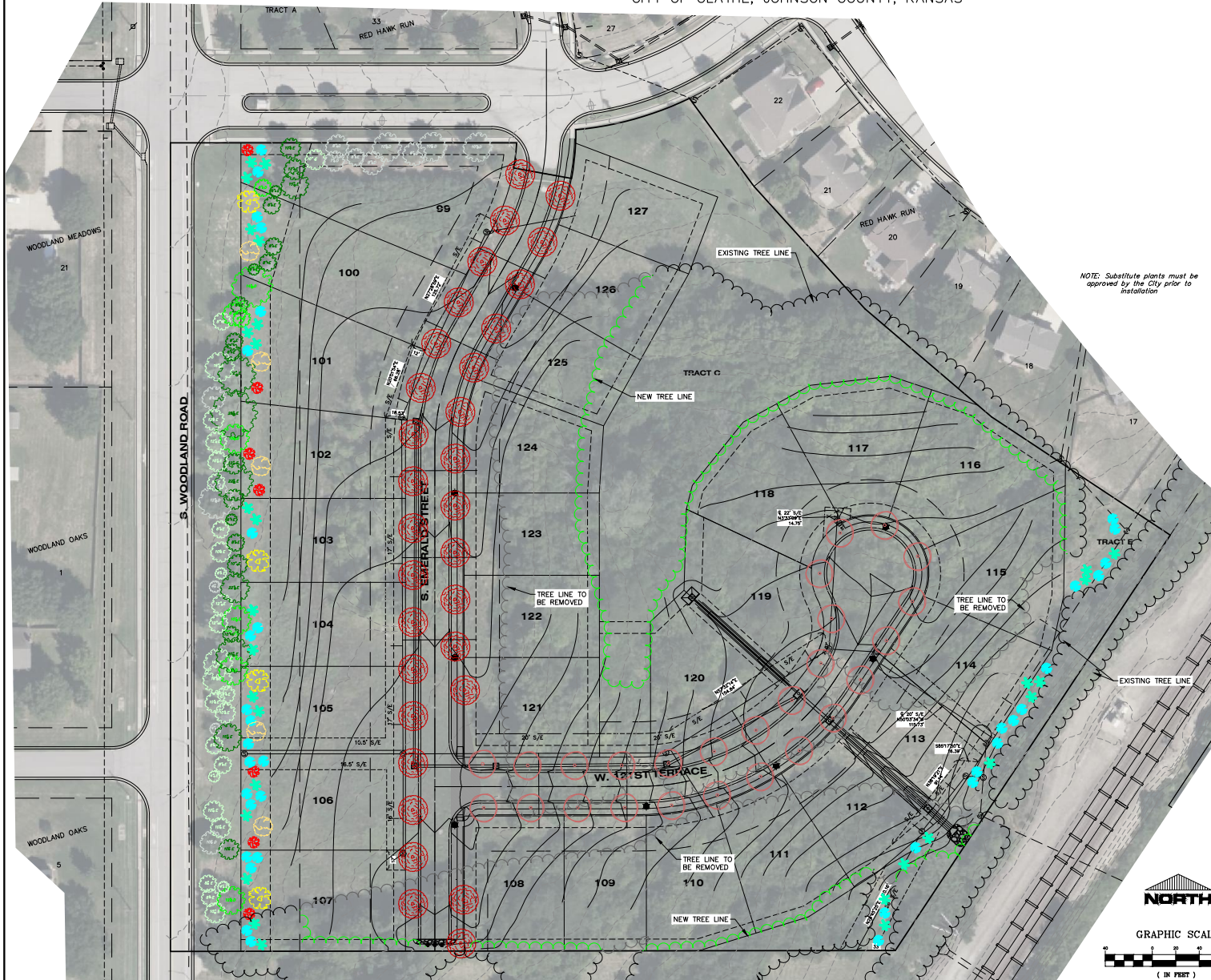


STREET TREE PLAN
MASTER LANDSCAPE/SCREENING PLAN
RED HAWK RUN V
CITY OF OLATHE, JOHNSON COUNTY, KANSAS



NOTE: Substitute plants must be approved by the City prior to installation

STREET TREE SCHEDULE				
SYMBOL	COMMON NAME	BOTANICAL NAME	QUANTITIES	PLANTING SIZE
	Norway Maple	<i>Acer platanoides</i>	32	Min. 2.5" Caliper
	Chinquapin Oak	<i>Quercus muhlenbergi</i>	26	Min. 2.5" Caliper

WOODLAND ROAD - ARTERIAL STREET - 689 FEET

Shade Trees required (2 per 100 feet): 14 trees
Evergreen Trees required (8 per 100 feet): 56 trees
Ornamental Trees required (1 per 100 feet): 7 trees
Total required: 77 trees

SYMBOL	QUANTITIES	COMMON NAME	BOTANICAL NAME	PLANTING SIZE
	5	American Linden	<i>Tilia americana</i>	Min. 2.5" Caliper
	4	Sun Valley Red Maple	<i>Acer rubrum 'Sun Valley'</i>	Min. 2.5" Caliper

PROPOSED SHADE: 9

SYMBOL	QUANTITIES	COMMON NAME	BOTANICAL NAME	PLANTING SIZE
	7	Red Bud	<i>Cercis canadensis</i>	2" Cal. & 8' ht.

PROPOSED ORNAMENTAL: 7

SYMBOL	QUANTITIES	COMMON NAME	BOTANICAL NAME	PLANTING SIZE
	19	Conoert Juniper	<i>Juniperus virginiana 'Conoertii'</i>	6" ht.
	22	White Pine	<i>Pinus strobus</i>	6" ht.

PROPOSED EVERGREENS: 41

EXISTING TREES ALONG WOODLAND ROAD
(EXCLUDES TREES 12" WEST OF THE PROPOSED R/W LINE OR FARTHER)

SYMBOL	QUANTITIES	COMMON NAME	BOTANICAL NAME	PLANTING SIZE
	8			
	24			

TOTAL WOODLAND ROAD PLANTINGS: 89

EXISTING TREES ALONG WOODLAND ROAD & LANGLEY ST
NOT INCLUDED IN ARTERIAL PLANTING COUNT

SYMBOL	QUANTITIES	COMMON NAME	BOTANICAL NAME	PLANTING SIZE
	13			
	26			

RAILROAD R/W PLANTINGS

SYMBOL	QUANTITIES	COMMON NAME	BOTANICAL NAME	PLANTING SIZE
	11	Conoert Juniper	<i>Juniperus virginiana 'Conoertii'</i>	6" ht.
	15	White Pine	<i>Pinus strobus</i>	6" ht.

PROPOSED EVERGREENS: 26

RED HAWK RUN V

CIVIL ENGINEERS
LAND SURVEYORS - LAND PLANNERS

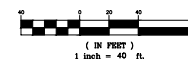


122 N. WATER STREET
OLATHE, KANSAS 66061
PHONE: (913) 764-1076
FAX: (913) 764-9635

14 W. PEORIA
PAOLA, KANSAS 66071
PHONE: (913) 557-1076
FAX: (913) 557-4904



GRAPHIC SCALE



AD PROJECT #36903

24-13-23