

PRELIMINARY DEVELOPMENT PLANS FOR STELLAR APARTMENTS IN THE CITY OF OLATHE, JOHNSON COUNTY, KANSAS

| INDEX | |
|-----------|------------------------|
| C000 | COVER SHEET |
| C100 | PRELIMINARY PLAT |
| C101-C102 | SITE PLAN - ENLARGED |
| C103 | OPEN SPACE PLAN |
| C200 | GRADING PLAN |
| C300 | UTILITY PLAN |
| C301-C302 | FIRE PROTECTION PLAN |
| L100 | TREE PRESERVATION PLAN |
| L110 | LANDSCAPE PLAN |
| L120 | LANDSCAPE DETAILS |

PREPARED & SUBMITTED BY:
PHELPS ENGINEERING, INC.
1270 N. WINCHESTER
OLATHE, KS 66061
CONTACT: KYLE DETERS, P.E.
913-393-1155 OFFICE
EMAIL: KDETERS@PHELPSENGINEERING.COM

DEVELOPER:
STELLAR DEVELOPMENT
6502 SLIDE RD., SUITE 404
LUBBOCK, TX 79424
CONTACT: T. DAVID STELL
PHONE: 806-771-2030 EXT. 202
EMAIL: DAVID@THESTELLARFAMILY.COM

UTILITY COMPANIES:

| | |
|---|--|
| ATMOS ENERGY TERRITORY ATMOS ENERGY CAMERON PARKS (CAMERON.PARKS@ATMOSENERGY.COM) 25000 W. 110TH TERRACE OLATHE, KS 66061 | (816) 560-1970 - OFFICE |
| EVERGY (METRO) CONTACT SOUTHERN JOCO EVERGY JUSTIN AMBERSON (JUSTIN.AMBERSON@EVERGY.COM) 16215 W. 108TH STREET LENEXA, KS 66219 | (816) 810-4363 |
| CITY OF OLATHE - PUBLIC SEWER CHRIS FARNEY (CFARNEY@OLATHEKS.ORG) | (913) 971-9451 |
| CITY OF OLATHE - PUBLIC WATER CHRIS FARNEY (CFARNEY@OLATHEKS.ORG) | (913) 971-9451 |
| AT&T DARRIN SHEPARD (DS@HSHATT.COM) 9444 MALL AVENUE OVERLAND PARK, KS 66207 | (816) 735-7658 - MOBILE |
| GOOGLE FIBER LAUREN MARCUCCI (KC-GOOGLE-UC@GOOGLE.COM) | (913) 663-1900 |
| SPECTRUM RICHARD SIEGER (RICHARD.SIEGER@CHARTER.COM) 8221 W. 119TH STREET OVERLAND PARK, KS | (913) 643-1925 - OFFICE (816) 215-8935 - CELL |



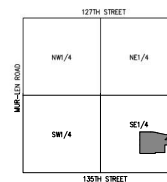
BENCHMARK:

VERTICAL DATUM = NAVD88 BASED ON JOHNSON COUNTY VERTICAL NETWORK BM 205

1. "+" CUT IN NW COR. CURB INLET AT SW CORNER OF PROPERTY N. SIDE 134TH STREET AND BLACKFOOT DRIVE.
ELEVATION = 1017.49

FLOOD NOTE:

THIS PROPERTY LIES WITHIN ZONE X, DEFINED AS AREAS DETERMINED TO BE OUTSIDE THE 0.2% ANNUAL CHANCE FLOODPLAIN, AS SHOWN ON THE FLOOD INSURANCE RATE MAP PREPARED BY THE FEDERAL EMERGENCY MANAGEMENT AGENCY FOR THE CITY OF OLATHE, COMMUNITY NO. 220173, JOHNSON COUNTY, KANSAS, MAP NO. 20091C0080G, AND DATED AUGUST 3, 2009.



SCALE: 1"=500'
VICINITY MAP SEC. 29-13-24



PHELPS ENGINEERING, INC.
KYLE H. WINCHESTER
OLATHE, KANSAS 66061
913-393-1155
WWW.PHELPSENGINEERING.COM

PLANNING
ENGINEERING
IMPLEMENTATION
PEI

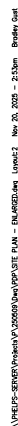
COVER SHEET
BLACKFOOT STELLAR APARTMENTS
CITY OF OLATHE, JOHNSON COUNTY, KANSAS

| PROJECT NO. | DATE | BY | CHKD. | REVISION |
|-------------|------------|-----|-------|----------|
| 29-13-24 | 11-15-2013 | KDE | RSB | 001 |
| 29-13-24 | 11-15-2013 | KDE | RSB | 002 |
| 29-13-24 | 11-15-2013 | KDE | RSB | 003 |
| 29-13-24 | 11-15-2013 | KDE | RSB | 004 |
| 29-13-24 | 11-15-2013 | KDE | RSB | 005 |
| 29-13-24 | 11-15-2013 | KDE | RSB | 006 |
| 29-13-24 | 11-15-2013 | KDE | RSB | 007 |
| 29-13-24 | 11-15-2013 | KDE | RSB | 008 |
| 29-13-24 | 11-15-2013 | KDE | RSB | 009 |
| 29-13-24 | 11-15-2013 | KDE | RSB | 010 |

SHEET
C000



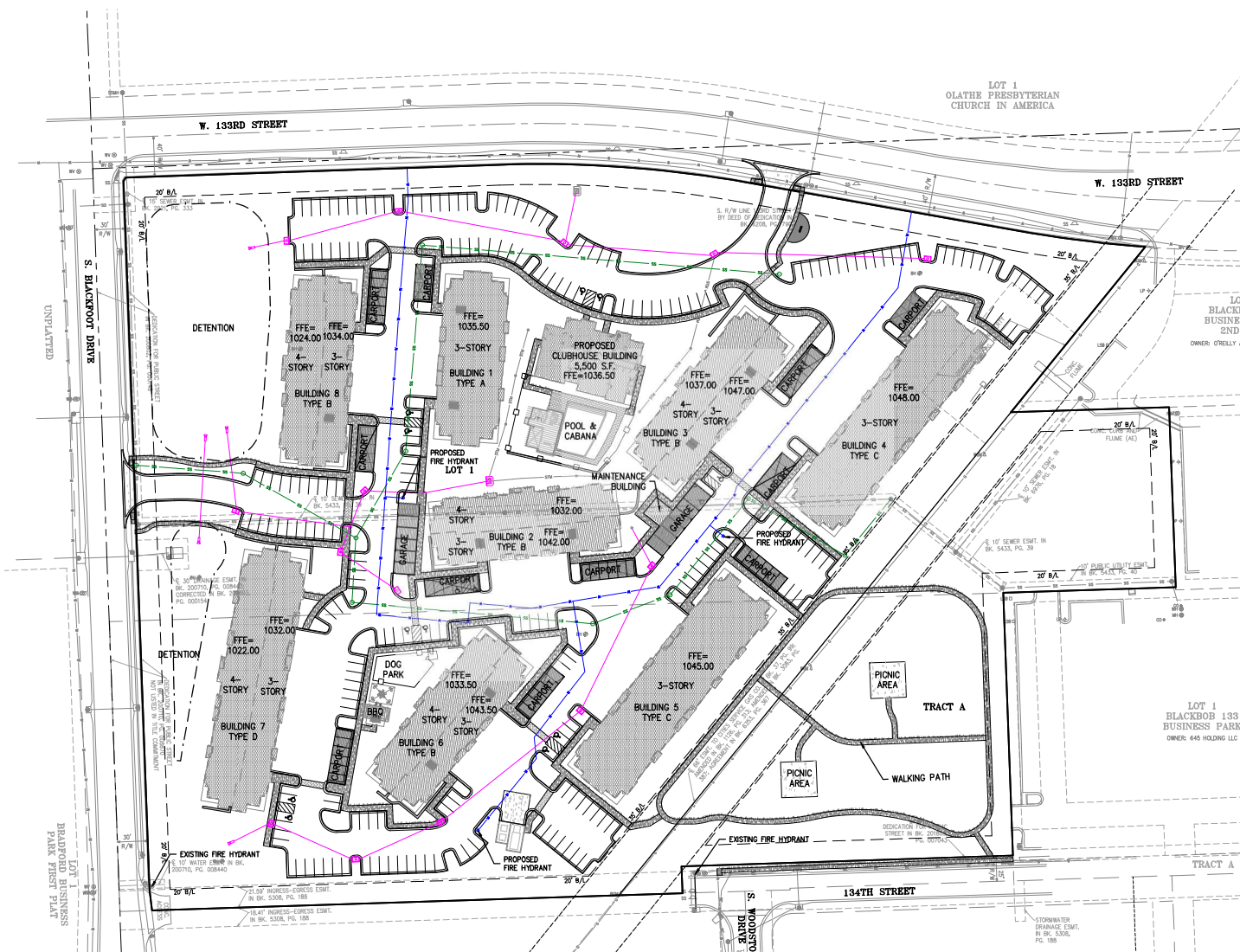
Know what's below.
Call before you dig.





Know what's below.
Call before you dig.

UTILITY NOTES:
VISUAL INDICATIONS OF UTILITIES ARE AS SHOWN.
UNDERGROUND LOCATIONS SHOWN, AS FURNISHED BY THEIR
LESSORS, ARE APPROXIMATE AND SHOULD BE VERIFIED IN THE
FIELD AT THE TIME OF CONSTRUCTION. FOR ACTUAL FIELD
LOCATIONS OF UNDERGROUND UTILITIES CALL 811.



UTILITY COMPANIES:

ATMOS ENERGY TERRITORY
ATMOS ENERGY
CAMERON PARKS (CAMERON.PARKS@ATMOSENERGY.COM) (816) 560-1970 - OFFICE
25500 W. 110TH TERRACE
OLATHE, KS 66061

EVERGY (METRO) CONTACT SOUTHERN JOCO
EVERGY
JUSTIN AMBERSON (JUSTIN.AMBERSON@EVERGY.COM) (816) 810-4363
16215 W. 108TH STREET
LENEXA, KS 66219

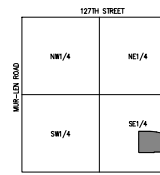
CITY OF OLATHE - PUBLIC SEWER
CHRIS FARNEY (CFARNEY@OLATHEKS.ORG) (913) 971-9451

CITY OF OLATHE - PUBLIC WATER
CHRIS FARNEY (CFARNEY@OLATHEKS.ORG) (913) 971-9451

AT&T
DARRIN SHEPARD (DS616@ATT.COM) (816) 735-7658 - MOBILE
9444 NALL AVENUE
OVERLAND PARK, KS 66207

GOOGLE FIBER
LAUREN MAROUCCI (KC-GOOGLE-UC@GOOGLE.COM) (913) 663-1900

SPECTRUM
RICHARD SEIGER (RICHARD.SIEGER@CHARTER.COM) (913) 643-1925 - OFFICE
8221 W. 119TH STREET
OVERLAND PARK, KS (816) 210-8835 - CELL



SCALE: 1"=200'
VICINITY MAP SEC.
29-13-24

LEGEND

- PL PROPERTY LINE
- LL LOT LINE
- R/W RIGHT-OF-WAY
- COM EXISTING COMMUNICATIONS LINE
- CMC EXISTING OVERHEAD COMMUNICATIONS LINE
- CG EXISTING GAS LINE
- BE EXISTING BURIED ELECTRIC LINE
- OSP EXISTING OVERHEAD POWER LINE
- SS EXISTING SANITARY SEWER LINE
- ESW EXISTING STORM SEWER LINE
- W EXISTING WATER LINE
- PG PROPOSED GAS LINE
- BE EXISTING BURIED ELECTRIC LINE
- SS PROPOSED SANITARY SEWER LINE
- W PROPOSED WATER LINE
- STM PROPOSED SECONDARY STORM
- COM PROPOSED COMMUNICATIONS LINE



SCALE: 1"=50'
0' 50' 100'

UTILITY PLAN
BLACKFOOT STELLAR APARTMENTS
CITY OF OLATHE, JOHNSON COUNTY, KANSAS

| PROJECT NO. | DATE | BY | CHKD. | REVISION |
|-------------|------------|--------------|--------------|----------|
| 250509 | 11-25-2023 | W. J. WILSON | W. J. WILSON | 001 |
| 250509 | 11-25-2023 | W. J. WILSON | W. J. WILSON | 002 |
| 250509 | 11-25-2023 | W. J. WILSON | W. J. WILSON | 003 |
| 250509 | 11-25-2023 | W. J. WILSON | W. J. WILSON | 004 |
| 250509 | 11-25-2023 | W. J. WILSON | W. J. WILSON | 005 |
| 250509 | 11-25-2023 | W. J. WILSON | W. J. WILSON | 006 |
| 250509 | 11-25-2023 | W. J. WILSON | W. J. WILSON | 007 |
| 250509 | 11-25-2023 | W. J. WILSON | W. J. WILSON | 008 |
| 250509 | 11-25-2023 | W. J. WILSON | W. J. WILSON | 009 |
| 250509 | 11-25-2023 | W. J. WILSON | W. J. WILSON | 010 |

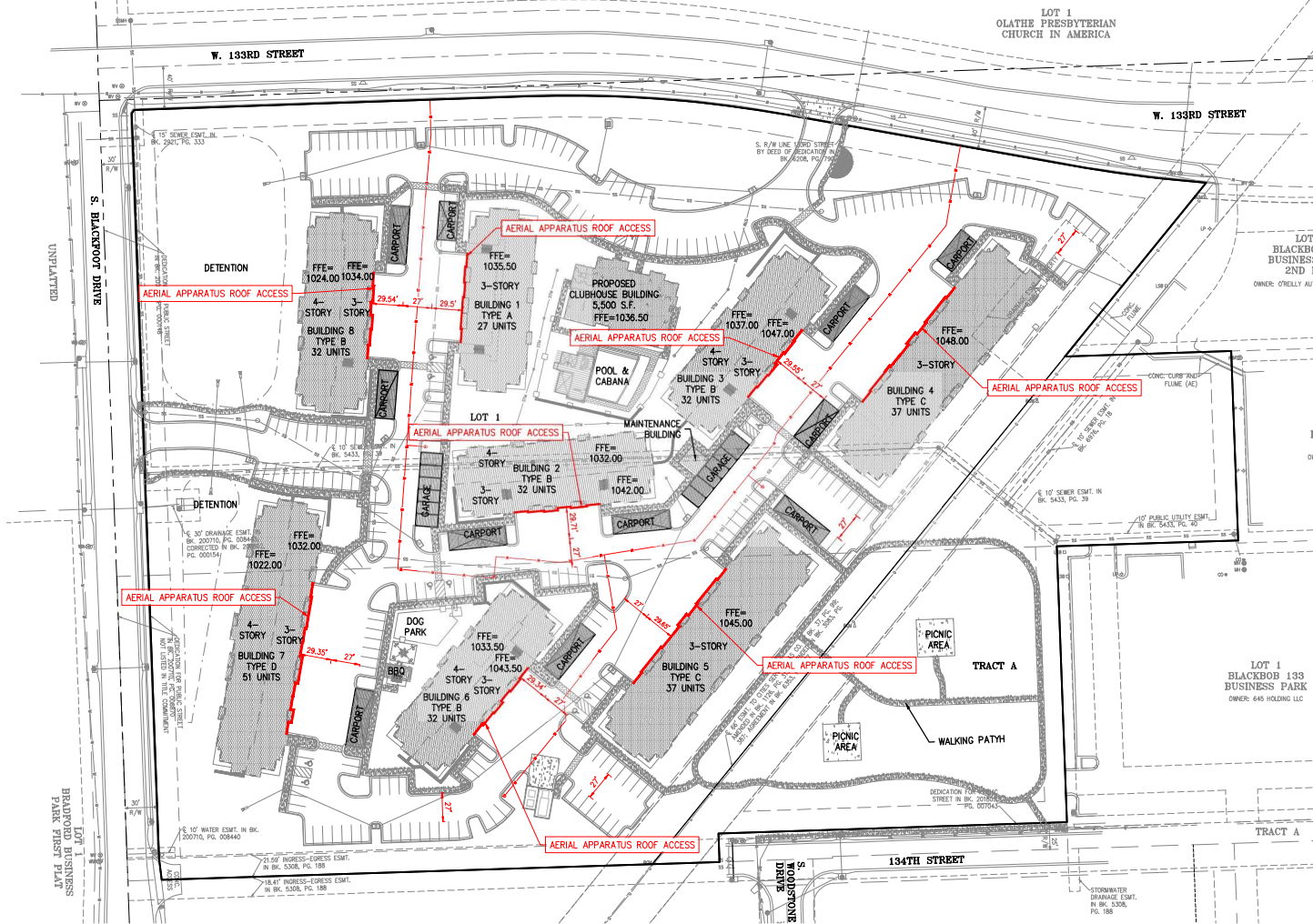
SHEET
C300

\\PHILIPS-GENDEV\proj\250000\City\250000\FIRE PROTECTION\PLAN\Map Legend.dwg 11/25/2025 2:54pm Bradley Gault



Know what's below.
Call before you dig.

UTILITY NOTES:
VISUAL INDICATIONS OF UTILITIES ARE AS SHOWN.
UNDERGROUND LOCATIONS SHOWN AS FURNISHED BY THEIR
LESSORS, ARE APPROXIMATE AND SHOULD BE VERIFIED IN THE
FIELD AT THE TIME OF CONSTRUCTION. FOR ACTUAL FIELD
LOCATIONS OF UNDERGROUND UTILITIES CALL 811.



- LEGEND**
- PL PROPERTY LINE
 - LL LOT LINE
 - R/W RIGHT-OF-WAY
 - Aerial Apparatus Roof Access
 - Fire Hydrant



SCALE: 1"=50'

FIRE PROTECTION PLAN - TRUCK TURN
BLACKFOOT STELLAR APARTMENTS
CITY OF OLATHE, JOHNSON COUNTY, KANSAS

| No. | Date | Revised | By | Appr. |
|-----|------------|------------|-----|-------|
| 1 | 11-25-2025 | 07/11/2025 | BRG | BRG |
| 2 | | | | |
| 3 | | | | |
| 4 | | | | |
| 5 | | | | |
| 6 | | | | |
| 7 | | | | |
| 8 | | | | |
| 9 | | | | |
| 10 | | | | |

SHEET
C302

PHILIPS ENGINEERING, INC.
1001 N. Winchester
Olathe, Kansas 66061
(913) 765-1000
www.philipsengineering.com

