

EXTERIOR MATERIAL LEGEND

MP-1:	DM CORRUGATED METAL PANEL CP75 COLOR: "DARK BRONZE"
MP-2:	DM 1'X12' FLUSH METAL PANEL FP1012 COLOR: "DARK BRONZE"
MP-3:	24 GA KYMAR COATED METAL COPING COLOR: KYMAR COATED "DARK BRONZE" & "WHITE" TO MATCH WALL
MP-4:	DM 7.2 CORRUGATED METAL PANEL WP72 COLOR: "DARK BRONZE"
MP-5:	24 GA KYMAR COATED METAL GUTTER AND DOWNSPOUT
GL-1:	PPG SOLARBAN 700L SOLAR CONTROL LOW-E GLAZING UNIT
STL-1:	GALVANIZED PAINTED STEEL CHANNEL FASCIA COLOR: "DARK BRONZE"
CS-1:	3 COAT CEMENTITIOUS STUCCO SYSTEM
ST-1:	NATURAL LIMESTONE VENEER

OLATHE MED-ACT STATION

301 N. MONROE ST.
OLATHE, KS 66061

Project No.: 23044
Date: 01.19.24
Issued For: PDP SUBMITTAL

No.	Date	Description
1	02.21.24	PDP Resubmittal

REGISTRATION

NOT FOR CONSTRUCTION

PROJECT TEAM

ARCHITECT	FINKLE-WILLIAMS ARCHITECTURE
CIVIL	PHIELPS ENGINEERING
LANDSCAPE	LANDWORKS STUDIO
FOUNDATIONS	STAND STRUCTURAL
STRUCTURAL	STAND STRUCTURAL
PLUMBING	PKMR ENGINEERS
MECHANICAL	PKMR ENGINEERS
ELECTRICAL	PKMR ENGINEERS
FIRE PROTECTION	-
CONTRACTOR	-



8787 RENNER BLVD., SUITE 100
LENEXA, KANSAS 66219
913.498.1550
www.finklewilliams.com

SHEET TITLE

EXTERIOR
ELEVATIONS

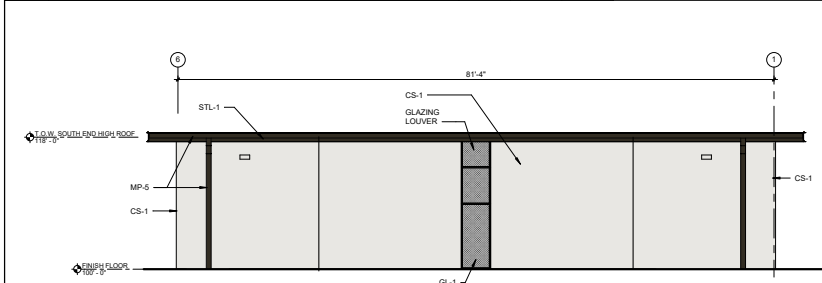
SHEET NUMBER

AP4.01

4 WEST ELEVATION

AP4.01 SCALE: 1/8" = 1'-0"

MATERIAL	CLASS	PERCENTAGE
STUCCO	CLASS 1	85%
GLAZING	CLASS 1	25%
STONE	CLASS 1	25%
METAL	CLASS 2	2%



2 NORTH ELEVATION

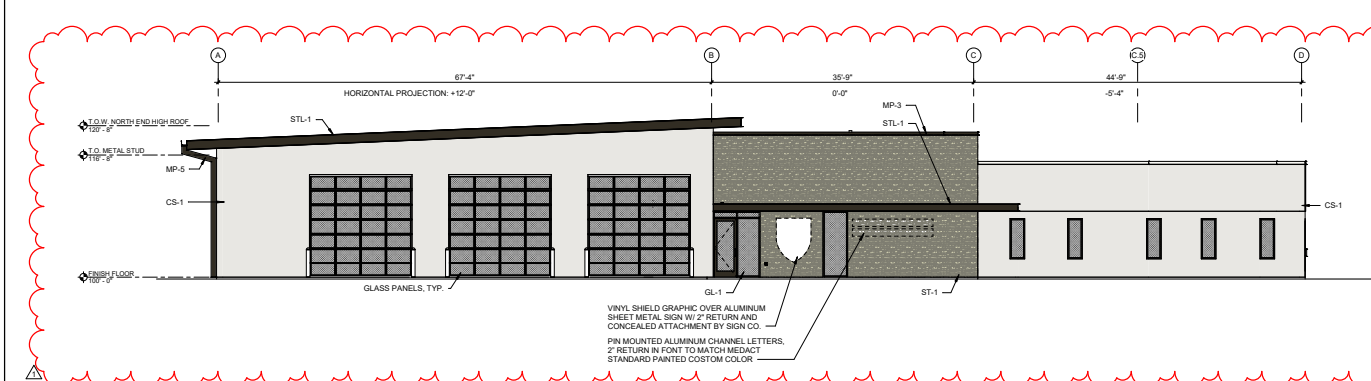
AP4.01 SCALE: 1/8" = 1'-0"

MATERIAL	CLASS	PERCENTAGE
STUCCO	CLASS 1	70%
GLAZING	CLASS 1	10%
STONE	CLASS 1	5%
METAL	CLASS 2	2%

3 SOUTH ELEVATION

AP4.01 SCALE: 1/8" = 1'-0"

MATERIAL	CLASS	PERCENTAGE
STUCCO	CLASS 1	85%
GLAZING	CLASS 1	25%
STONE	CLASS 1	25%
METAL	CLASS 2	2%



1 EAST ELEVATION (PRIMARY)

AP4.01 SCALE: 1/8" = 1'-0"

MATERIAL	CLASS	PERCENTAGE
STUCCO	CLASS 1	48%
GLAZING	CLASS 1	20%
STONE	CLASS 1	25%
METAL	CLASS 2	7%

OLATHE
MED-ACT
STATION

301 N. MONROE ST.
OLATHE, KS 66061

Project No.: 23044
Date: 01.19.24
Issued For: PDP SUBMITTAL

REVISIONS		
No.	Date	Description
1	02.21.24	PDP Resubmit

REGISTRATION

NOT FOR CONSTRUCTION

PROJECT TEAM	
ARCHITECT	FINKLE-WILLIAMS ARCHITECTURE
CIVIL	PHIELPS ENGINEERING
LANDSCAPE	LANDWORKS STUDIO
FOUNDATIONS	STAND STRUCTURAL
STRUCTURAL	STAND STRUCTURAL
PLUMBING	PKMR ENGINEERS
MECHANICAL	PKMR ENGINEERS
ELECTRICAL	PKMR ENGINEERS
FIRE PROTECTION	-
CONTRACTOR	-



FINKLE + WILLIAMS
ARCHITECTURE

8787 RENNER BLVD., SUITE 100
LENEXA, KANSAS 66159
913.498.1550
www.finklewilliams.com

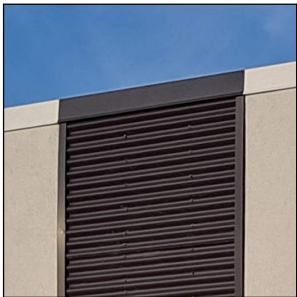
SHEET TITLE

EXTERIOR
RENDERING

SHEET NUMBER

AP4.02

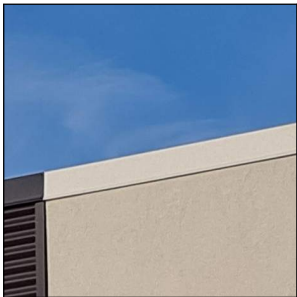




MTL-1



MTL-2



MTL-3



MTL-4



MTL-5



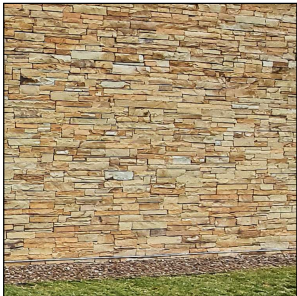
GL-1



STL-1



CS-1



ST-1

EXTERIOR MATERIAL LEGEND

MP-1:	DM CORRUGATED METAL PANEL CP75 COLOR: "DARK BRONZE"
MP-2:	DM 1'X12' FLUSH METAL PANEL FP1012 COLOR: "DARK BRONZE"
MP-3:	24 GA KYNAR COATED METAL COPING COLOR: KYNAR COATED "DARK BRONZE" & "WHITE" TO MATCH WALL
MP-4:	DM 7.2 CORRUGATED METAL PANEL WP72 COLOR: "DARK BRONZE"
MP-5:	24 GA KYNAR COATED METAL GUTTER AND DOWNSPOUT
GL-1:	PPG SOLARBAN 70XL SOLAR CONTROL LOW-E GLAZING UNIT
STL-1:	GALVANIZED PAINTED STEEL CHANNEL FASCIA COLOR: "DARK BRONZE"
CS-1:	3 COAT CEMENTITIOUS STUCCO SYSTEM
ST-1:	NATURAL LIMESTONE VENEER

OLATHE
MED-ACT
STATION

301 N. MONROE ST.
OLATHE, KS 66061

Project No.: 23044
Date: 01.19.24
Issued For: PDP SUBMITTAL

REVISIONS		
No.	Date	Description
1	02.21.24	PDP Resubmittal

REGISTRATION

NOT FOR CONSTRUCTION

PROJECT TEAM	
ARCHITECT	FINKLE+WILLIAMS ARCHITECTURE
CIVIL	PHIELPS ENGINEERING
LANDSCAPE	LANDWORKS STUDIO
FOUNDATIONS	STAND STRUCTURAL
STRUCTURAL	STAND STRUCTURAL
PLUMBING	PKMR ENGINEERS
MECHANICAL	PKMR ENGINEERS
ELECTRICAL	PKMR ENGINEERS
FIRE PROTECTION	-
CONTRACTOR	-



FINKLE + WILLIAMS
ARCHITECTURE

8787 RENNER BLVD., SUITE 100
LENEXA, KANSAS 66119
913.498.1550
www.finklewilliams.com

SHEET TITLE
MATERIAL
PALETTE