



VIEW FROM SOUTHWEST

2025 DECEMBER 03

NEW BRANCH

EXTERIOR RENDERING



KEELEY
CONSTRUCTION
Copyright © 2025 Keeley Construction

11190 South Lone Elm Road
Olathe, Kansas



TRUITY
CREDIT UNION



VIEW FROM NORTHEAST

2025 DECEMBER 03

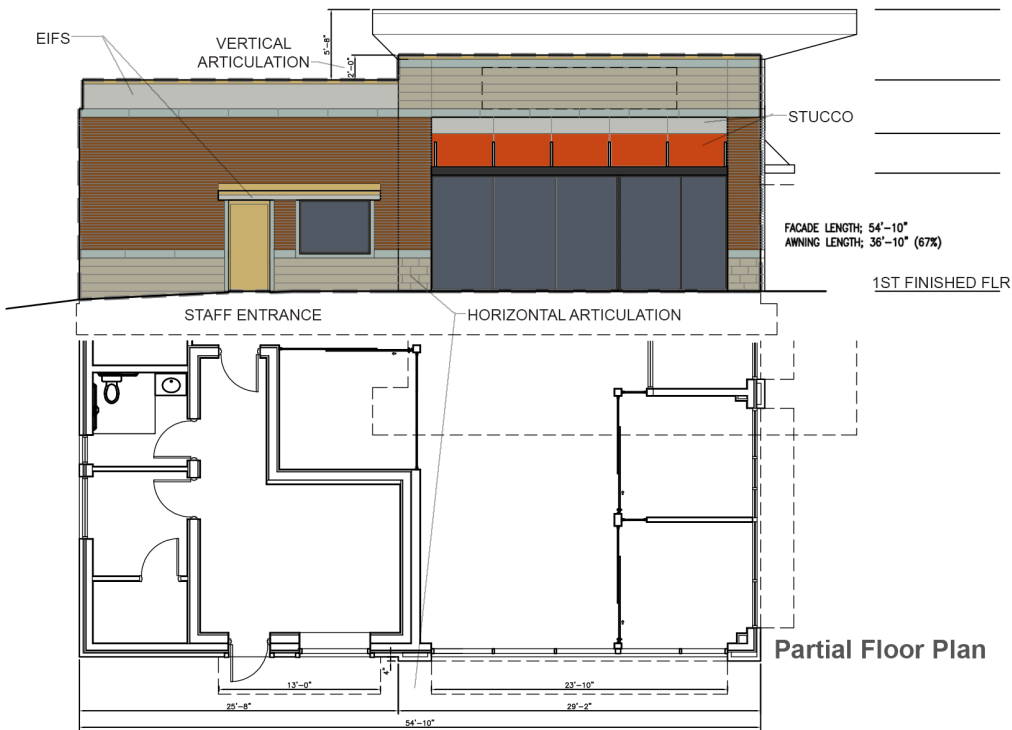
NEW BRANCH

EXTERIOR RENDERING



11190 South Lone Elm Road
Olathe, Kansas





SOUTH ELEVATION-FACING 111TH PLACE (primary)

ELEVATION	TOTAL ELEV'N AREA	CLASS 1 MATERIALS								TTL %, CLASS 1	TTL % CLASS 1+2	CLASS 2 MATERIALS	
		GLASS-CLEAR		BRICK VENEER (CAVITY)		CAST STONE VENEER (CAVITY)		STUCCO- GENUINE				CMU (GROUND FACE, CAVITY)	
SF	%	SF	%	SF	%	SF	%	%	%	SF	%		
EAST/LONE ELM (PRIMARY)	1076	479	45% 25% MIN	99.5	9%	19.3	2%	200.2	19%	56%	80% 80% MIN	58	5%
SOUTH/111TH PL (PRIMARY)	994.5	247	25% 25% MIN	279.9	28%	79.7	8%	95.3	10%	61%	88% 80% MIN	174.1	18%
WEST/LAVERTY (PRIMARY)	813.7	200.2	25% 25% MIN	282.7	35%	81.2	10%	0	0%	69%	84% 80% MIN	118	15%
NORTH (SECONDARY)	1144	243.2	21%	174.2	15%	46.2	4%	65.8	6%	41%	60% 50% MIN	152.1	13%

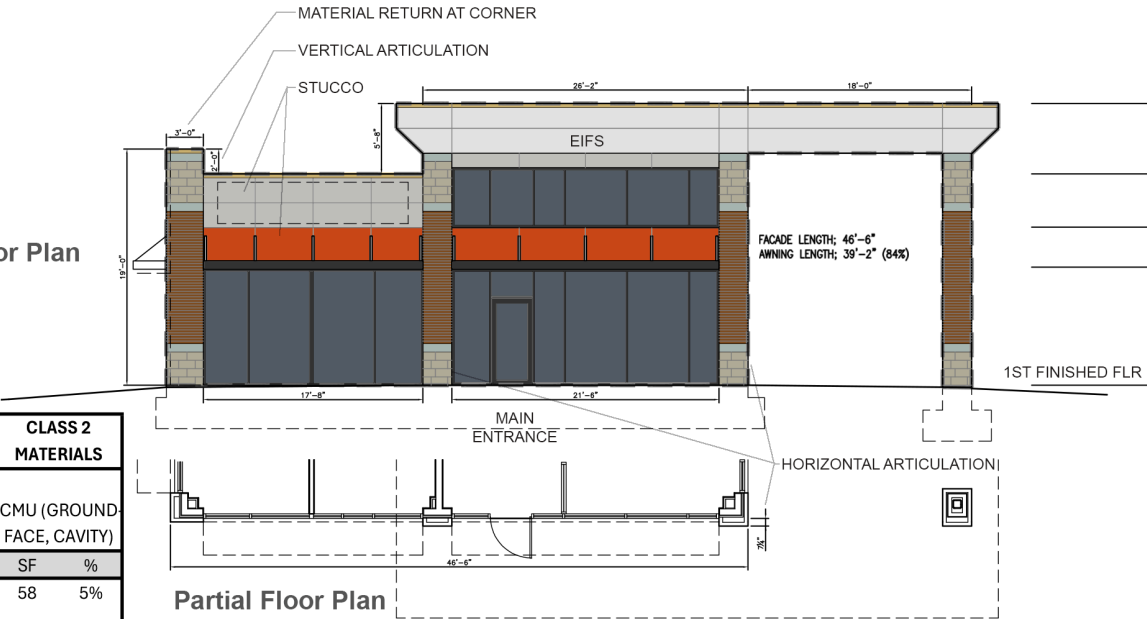
GENERAL NOTES

NO ROOFTOP MECHANICAL UNITS

GROUND MOUNTED EQUIPMENT, METERS, ETC WILL BE LOCATED ON THE NORTH SIDE OR WILL BE FULLY SCREENED FROM VIEW

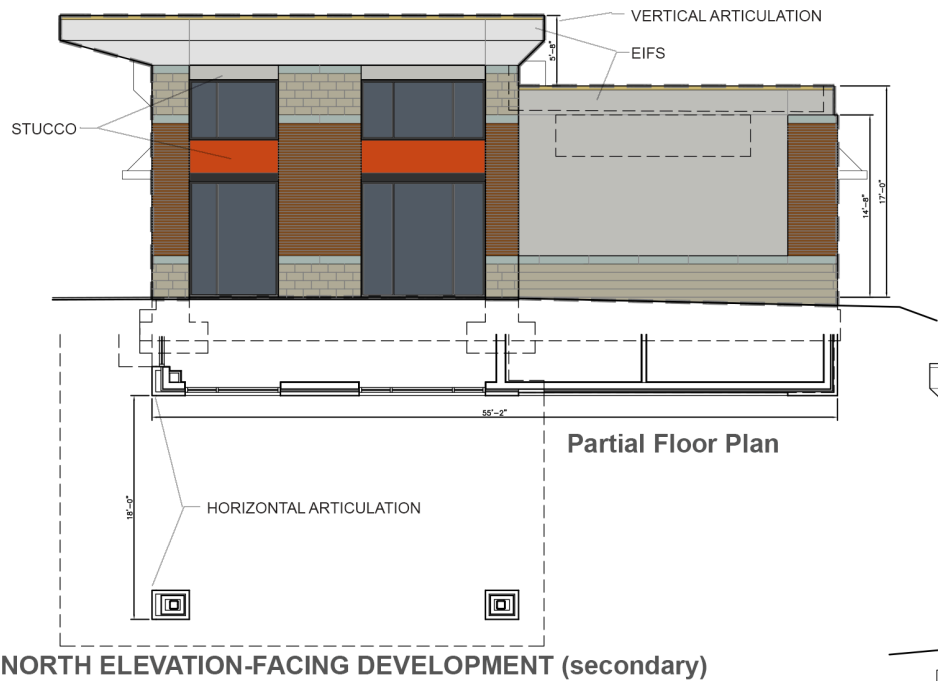
NO THIN BRICK OR APPLIED STONE. CORNERS WILL BE FINISHED ON BOTH ENDS OR MITERED

MATERIAL	MANUFACTURER	STYLE	COLOR	NOTES
E.I.F.S. (LIGHT COLOR)	DRYVIT	SANDPEBBLE FINISH	#522 LIGHT GRAY	(HIGH SLOPE ROOF FASCIA) - SEE ELEVATIONS
E.I.F.S. (MEDIUM COLOR)	DRYVIT, STUCCO (AT ENTRY)	SANDPEBBLE-FINE FINISH	#104 DOVER SKY	SEE ELEVATIONS
E.I.F.S. (ACCENT COLOR)	STUCCO (AT ENTRY)		PMS 173	(ACCENT) - SEE ELEVATIONS
CAST STONE TRIM	-	-	-	(TRIM AT MATERIAL TRANSITIONS) - SEE ELEVATIONS
FACE BRICK VENEER	-	-	-	FULLY MORTARED (NATURAL)
CMU-GROUND FACE	-	-	-	STUCCO (AT ENTRY) FULLY MORTARED (NATURAL)
PRE-FINISHED SHEET METAL	PAC-CLAD	N / A	SANDSTONE	(ROOFING, COPING, FLASHING, GUTTERS & DOWNSPOUTS)
PAINTED EXT. DOORS & FRAMES	SHERWIN WILLIAMS	PAINT	SANDSTONE	MATTE FINISH
STOREFRONT / WINDOWS	TUBELITE		BLACK ANODIZED ALUM.	
ALUMINUM SUNSHADES	-	-	BLACK ANODIZED ALUM.	



EAST ELEVATION-FACING LONE ELM ROAD (primary)

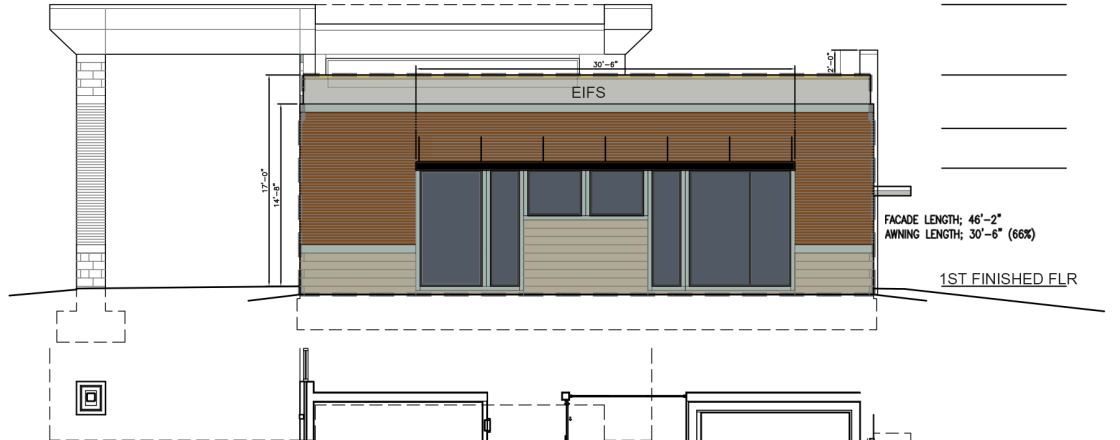
MATERIAL CALCULATIONS AND CLASSIFICATIONS PER UDO SECTION 18.15.020.G.7
REFER TO TRASH ENCLOSURE SHEET FOR FULL EXTERIOR MATERIALS PROPORTIONS



- GENERAL NOTES
- NO ROOFTOP MECHANICAL UNITS
 - GROUND MOUNTED EQUIPMENT, METERS, ETC WILL BE LOCATED ON THE NORTH SIDE OR WILL BE FULLY SCREENED FROM VIEW
 - NO THIN BRICK OR APPLIED STONE. CORNERS WILL BE FINISHED ON BOTH ENDS OR MITERED

1ST FINISHED FLR

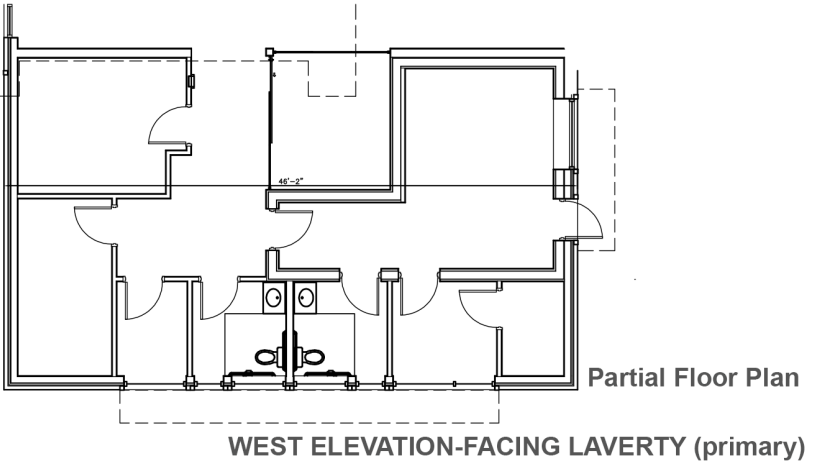
MATERIAL	MANUFACTURER	STYLE	COLOR	NOTES
E.I.F.S. (LIGHT COLOR)	DRYVIT	SANDPEBBLE FINISH	#522 LIGHT GRAY	(HIGH SLOPE ROOF FASCIA) - SEE ELEVATIONS
E.I.F.S. (MEDIUM COLOR)	DRYVIT, STUCCO (AT ENTRY)	SANDPEBBLE-FINE FINISH	#104 DOVER SKY	SEE ELEVATIONS
E.I.F.S. (ACCENT COLOR)	STUCCO (AT ENTRY)		PMS 173	(ACCENT) - SEE ELEVATIONS
CAST STONE TRIM	-	-	-	(TRIM AT MATERIAL TRANSITIONS) - SEE ELEVATIONS
FACE BRICK VENEER	-	-	-	FULLY MORTARED (NATURAL)
CMU-GROUND FACE	-	-	STUCCO (AT ENTRY)	FULLY MORTARED (NATURAL)
PRE-FINISHED SHEET METAL	PAC-CLAD	N / A	SANDSTONE	(ROOFING, COPING, FLASHING, GUTTERS & DOWNSPOUTS)
PAINTED EXT. DOORS & FRAMES	SHERWIN WILLIAMS	PAINT	SANDSTONE	MATTE FINISH
STOREFRONT / WINDOWS	TUBELITE		BLACK ANODIZED ALUM.	
ALUMINUM SHUNSHADES	-	-	BLACK ANODIZED ALUM.	



1ST FINISHED FLR

MATERIAL CALCULATIONS AND CLASSIFICATIONS PER UDO SECTION 18.15.020.G.7
REFER TO TRASH ENCLOSURE SHEET FOR FULL EXTERIOR MATERIALS PROPORTIONS

ELEVATION	TOTAL ELEV'N AREA	CLASS 1 MATERIALS								TTL %, CLASS 1	TTL %, CLASS 1+2	CLASS 2 MATERIALS	
		GLASS-CLEAR		BRICK VENEER (CAVITY)		CAST STONE VENEER (CAVITY)		STUCCO- GENUINE				CMU (GROUND FACE, CAVITY)	
	SF	SF	%	SF	%	SF	%	SF	%	%	%	SF	%
EAST/LONE ELM (PRIMARY)	1076	479	45% 25% MIN	99.5	9%	19.3	2%	200.2	19%	56%	80% 80% MIN	58	5%
SOUTH/111TH PL (PRIMARY)	994.5	247	25% 25% MIN	279.9	28%	79.7	8%	95.3	10%	61%	88% 80% MIN	174.1	18%
WEST/LAVERY (PRIMARY)	813.7	200.2	25% 25% MIN	282.7	35%	81.2	10%	0	0%	69%	84% 80% MIN	118	15%
NORTH (SECONDARY)	1144	243.2	21%	174.2	15%	46.2	4%	65.8	6%	41%	60% 50% MIN	152.1	13%



Partial Floor Plan

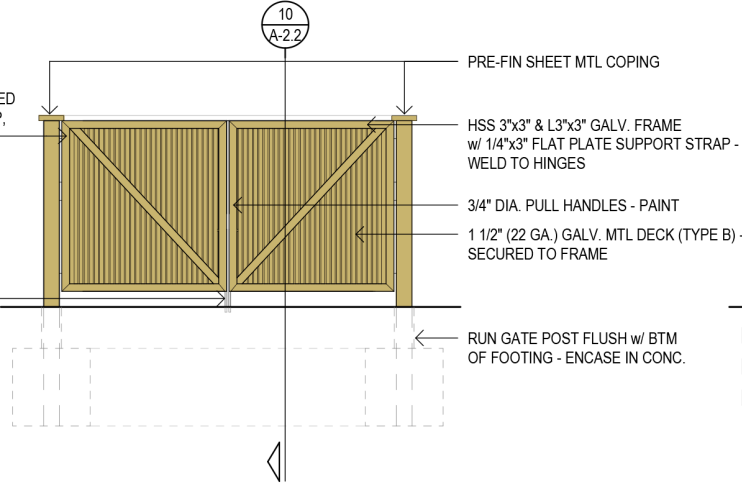
WEST ELEVATION-FACING LAVERY (primary)

ALL EXPOSED METAL TO BE PAINTED - SEE EXTERIOR MATERIALS LEGEND ON A-6.1

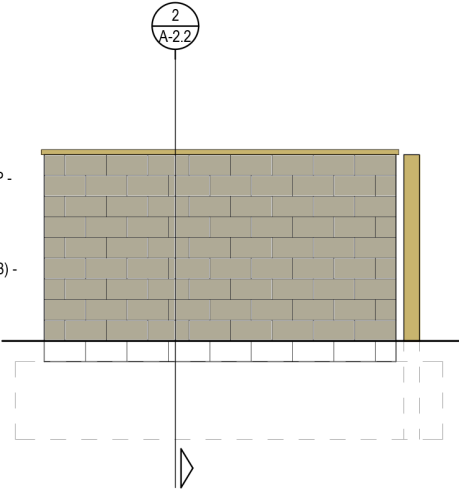
REFER TO OTHER SHEETS FOR FULL EXTERIOR MATERIALS COLOR/LEGEND

6" DIA. GALV. PIPE w/ 7" STEEL BARREL HINGES (3 REQ'D.) - FILL WITH CONCRETE - WELDED HINGES TO GATE POST AT TOP, BTM, & MIDDLE - PAINT

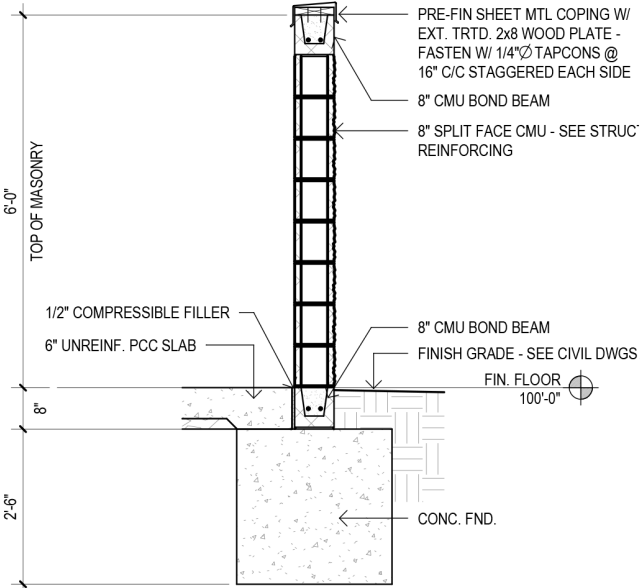
GALV. SLIDING HARDWARE (3/4" DIA. CANE BOLT) TO SECURE TO PAVEMENT - DRILL 2" HOLE IN CONC.



TRASH ENCLOSURE - FRONT ELEVATION



TRASH ENCLOSURE - SIDE ELEVATION



TRASH ENCLOSURE - SECTION

ELEVATION	TOTAL ELEV'N AREA	CLASS 1 MATERIALS								TTL %, CLASS 1	TTL %, CLASS 1+2	CLASS 2 MATERIALS	CLASS 3 MATERIALS				CLASS 4 MATERIALS				
		GLASS-CLEAR		BRICK VENEER (CAVITY)		CAST STONE VENEER (CAVITY)		STUCCO- GENUINE				CMU (GROUND- FACE, CAVITY)	ARCHITECT'L EIFS METALS				PAINTED MTL, TRIM/FLASH'G, AWNINGS MISC OTHER				
	SF	SF	%	SF	%	SF	%	SF	%	%	%	SF	%	SF	%	SF	%	SF	%		
EAST/LONE ELM (PRIMARY)	1076	479	45% 25% MIN	99.5	9%	19.3	2%	200.2	19%	56%	80% 80% MIN	58	5%	173.5	16%	26.1	2%	23	2%	0.4	0%
SOUTH/111TH PL (PRIMARY)	994.5	247	25% 25% MIN	279.9	28%	79.7	8%	95.3	10%	61%	88% 80% MIN	174.1	18%	58.4	6%	15.9	2%	48.2	5%	0	0%
WEST/LAVERTY (PRIMARY)	813.7	200.2	25% 25% MIN	282.7	35%	81.2	10%	0	0%	69%	84% 80% MIN	118	15%	91.3	11%	20.3	2%	15.2	2%	0	0%
NORTH (SECONDARY)	1144	243.2	21%	174.2	15%	46.2	4%	65.8	6%	41%	60% 50% MIN	152.1	13%	429.9	38%	11.4	1%	21.5	2%	1	0%