

**1** ROOF PLAN  
1/16" = 1'-0"

CENTAUR ANIMAL HEALTH  
W PITTMAN ST.

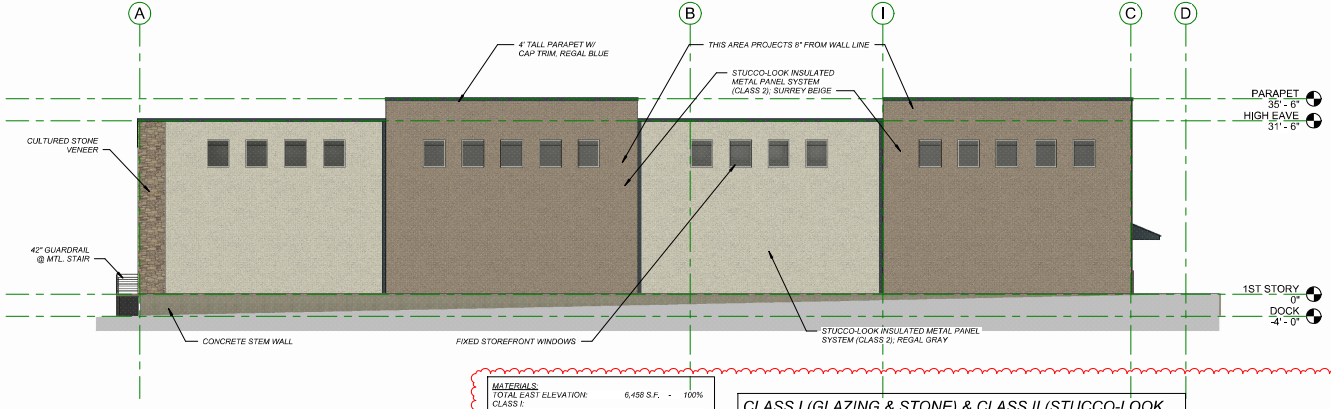
**Hernly**  
ARCHITECTS  
PLLC

1100 Rhine Manor St.  
Lawrence, Kansas 66044  
785 - 747 - 5806

ROOF PLAN

Date: 20250917  
Drawn by: SJB  
Checked by: SCH  
Revision:

A1.1



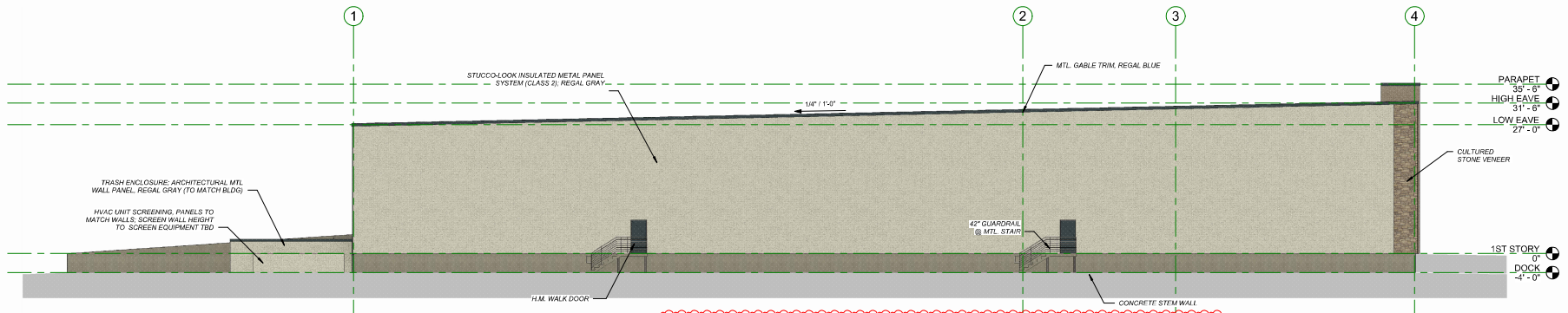
MATERIALS	
TOTAL EAST ELEVATION:	6,458 S.F. - 100%
CLASS I:	
GLAZING:	360 S.F. - 5.6%
STONE VENEER:	196 S.F. - 3.0%
CLASS II:	
STUCCO-LOOK PANEL:	5,382 S.F. - 83.3%
CLASS III:	
MTL TRIM:	174 S.F. - 2.7%
CONCRETE:	388 S.F. - 6.0%

**CLASS I (GLAZING & STONE) & CLASS II (STUCCO-LOOK PANEL) COMBINE FOR 75.0% OF FACADE**

NOTE: UDO PRIMARY FACADE REQ'S TO BE MET IN FULL FOR PHASE 2; SEE 1/A2.2

**1 EAST ELEVATION PHASE 1**  
3/32" = 1'-0"

(PRIMARY FACADE - FACING PRIVATE DRIVE A)



MATERIALS:	
TOTAL SOUTH ELEVATION:	7,609 S.F. - 100%
CLASS I:	
STONE VENEER:	312 S.F. - 4.1%
CLASS II:	
STUCCO-LOOK PANEL:	6,210 S.F. - 81.7%
CLASS III:	
MTL TRIM/DOOR:	198 S.F. - 2.6%
CONCRETE:	889 S.F. - 11.7%

**CLASS I (STONE) & CLASS II (STUCCO-LOOK PANEL) COMBINE FOR 85.8% OF FACADE**

**2 SOUTH ELEVATION PHASE 1**  
3/32" = 1'-0"

NOTE: EXTERIOR GROUND-MOUNTED OR BUILDING-MOUNTED EQUIPMENT INCLUDING, BUT NOT LIMITED TO, MECHANICAL EQUIPMENT, UTILITIES, METER BANKS, AND COOLERS MUST BE SCREENED FROM PUBLIC VIEW WITH THREE-SIDED LANDSCAPING OR WITH AN ARCHITECTURAL TREATMENT COMPATIBLE WITH THE BUILDING ARCHITECTURE

NOTE: PHASE 1 ELEVATIONS ADDED TO SET. PLEASE SEE WORKER REQUEST ATTACHED WITH THIS RESUBMITTAL SET REGARDING FACADE GLAZING AND ARTICULATION REQUIREMENTS TO BE MET IN FULL WITH PHASE 2.

CENTAUR ANIMAL HEALTH  
W PITTMAN ST.

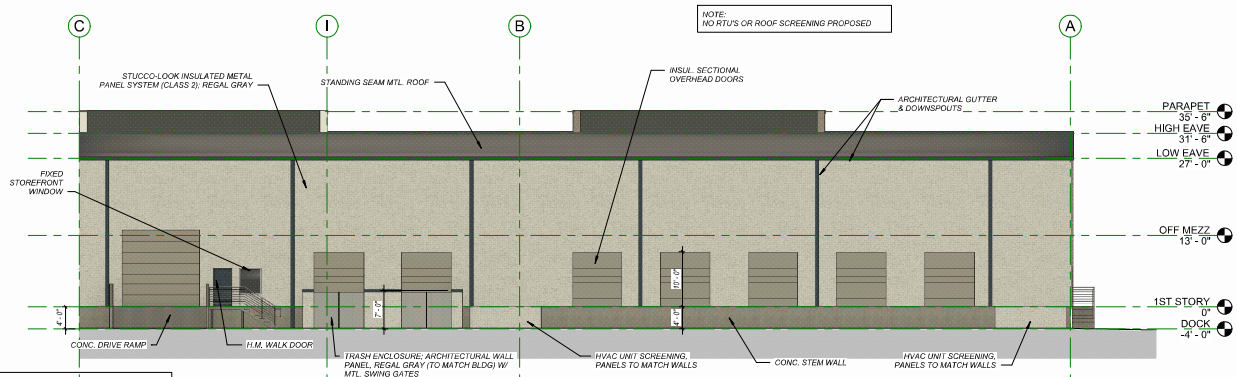
Hernly ARCHITECTS, P.C.  
MEMBERS: HUBBARD BERKELEY  
2018 AIA/CES/CES

1100 Echoe Blvd St.  
Lawrence, Kansas 66044  
785 - 747 - 5806

ELEVATIONS - PHASE 1

Date: 20250917  
Drawn by: SJH  
Checked by: SCB  
Revision: REV. 3 - 2025/10/31

A2.0



NOTE:  
NO RTUS OR ROOF SCREENING PROPOSED

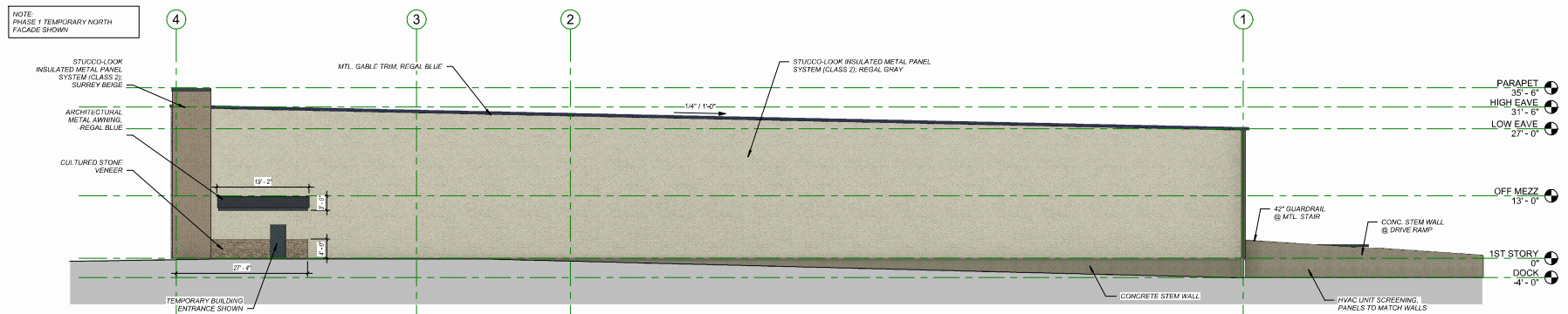
NOTE:  
EXTERIOR GROUND-MOUNTED OR BUILDING-MOUNTED EQUIPMENT INCLUDING, BUT NOT LIMITED TO, MECHANICAL EQUIPMENT, UTILITIES METER BANKS, AND COOLERS MUST BE SCREENED FROM PUBLIC VIEW WITH THREE-SIDED LANDSCAPING OR WITH AN ARCHITECTURAL TREATMENT COMPATIBLE WITH THE BUILDING ARCHITECTURE

MATERIALS:	
TOTAL WEST ELEVATION:	5,615 S.F. - 100%
CLASS I:	
GLAZING:	20 S.F. - 0.3%
CLASS II:	
STUCCO-LOOK PANEL:	3,794 S.F. - 67.6%
CLASS IV:	
MTL TRIM/DOOR:	1,081 S.F. - 19.3%
CONCRETE:	720 S.F. - 12.8%

**CLASS I (GLAZING) & CLASS II (STUCCO-LOOK PANEL) COMBINE FOR 67.9% OF FACADE**

## 1 WEST ELEVATION PHASE 1

3/32" = 1'-0"



NOTE:  
PHASE 1 TEMPORARY NORTH FACADE SHOWN

NOTE:  
EXTERIOR GROUND-MOUNTED OR BUILDING-MOUNTED EQUIPMENT INCLUDING, BUT NOT LIMITED TO, MECHANICAL EQUIPMENT, UTILITIES METER BANKS, AND COOLERS MUST BE SCREENED FROM PUBLIC VIEW WITH THREE-SIDED LANDSCAPING OR WITH AN ARCHITECTURAL TREATMENT COMPATIBLE WITH THE BUILDING ARCHITECTURE

MATERIALS:	
TOTAL SOUTH ELEVATION:	6,987 S.F. - 100%
CLASS I:	
STONE VENEER:	70 S.F. - 1.0%
CLASS II:	
STUCCO-LOOK PANEL:	6,391 S.F. - 91.5%
CLASS IV:	
MTL TRIM/DOOR:	216 S.F. - 3.1%
CONCRETE:	310 S.F. - 4.4%

**CLASS I (STONE VENEER) & CLASS II (STUCCO-LOOK PANEL) COMBINE FOR 92.5% OF FACADE**

## 2 NORTH ELEVATION PHASE 1

3/32" = 1'-0"

NOTE:  
PHASE 1 ELEVATIONS ADDED TO SET. PLEASE SEE WORKER REQUEST ATTACHED WITH THIS RESUBMITTAL SET REGARDING FACADE GLAZING AND ARTICULATION REQUIREMENTS TO BE MET IN FULL WITH PHASE 2.

CENTAUR ANIMAL HEALTH  
W PITTMAN ST.

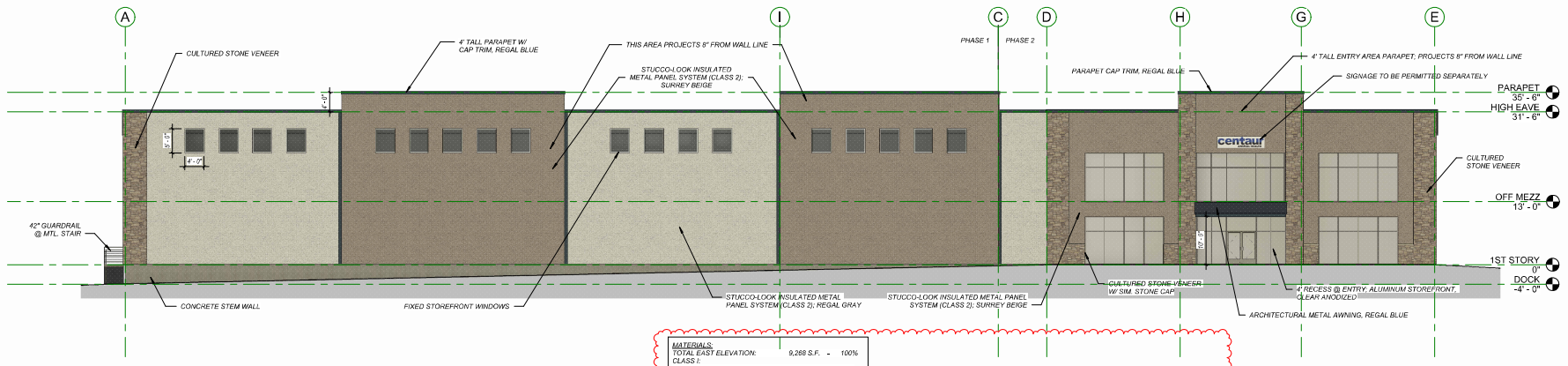
Hernly  
ARCHITECTS

1100 Echoe Blvd St.  
Lawrence, Kansas 66044  
785 - 747 - 5806

ELEVATIONS - PHASE 1

Date: 20250917  
Drawn by: SJR  
Checked by: SCB  
Revision:  
REV. 3 - 2025/10/31

A2.1

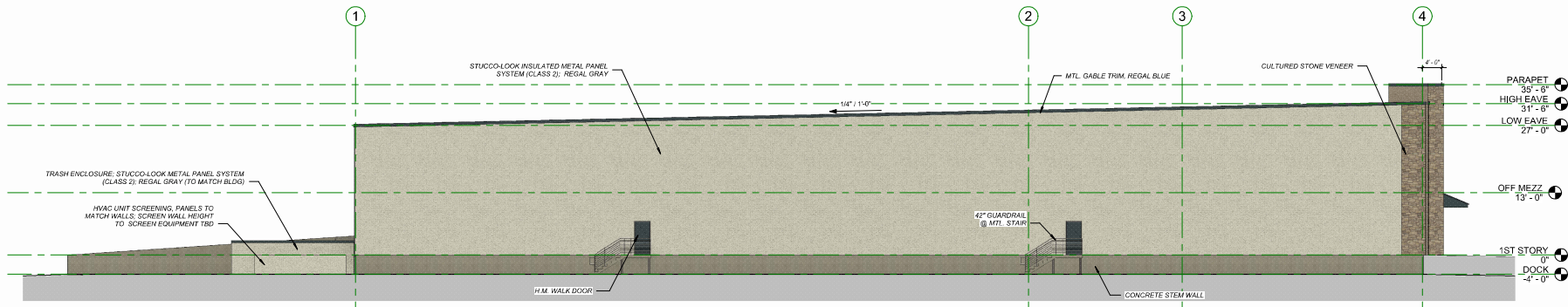


MATERIALS	
TOTAL EAST ELEVATION:	9,268 S.F. - 100%
CLASS I:	
GLAZED STOREFRONT:	1,380 S.F. - 15%
STONE VENEER:	782 S.F. - 8.4%
CLASS II:	
STUCCO-LOOK PANEL:	6,418 S.F. - 69.3%
CLASS III:	
MTL TRIM/DOOR/PLY CONCRETE:	296 S.F. - 3.2%
	382 S.F. - 4.1%

**CLASS I (GLAZING, STONE) & CLASS II (STUCCO-LOOK PANEL) COMBINE FOR 92.7% OF FACADE**

**1 EAST ELEVATION PHASE 2**  
3/32" = 1'-0"

(PRIMARY FACADE - FACING PRIVATE DRIVE A)



MATERIALS	
TOTAL SOUTH ELEVATION:	7,609 S.F. - 100%
CLASS I:	
STONE VENEER:	312 S.F. - 4.1%
CLASS II:	
STUCCO-LOOK PANEL:	6,210 S.F. - 81.7%
CLASS III:	
MTL TRIM/DOOR CONCRETE:	198 S.F. - 2.6%
	889 S.F. - 11.7%

**CLASS I (STONE) & CLASS II (STUCCO-LOOK PANEL) COMBINE FOR 85.8% OF FACADE**

**2 SOUTH ELEVATION PHASE 2**  
3/32" = 1'-0"

NOTE: EXTERIOR GROUND-MOUNTED OR BUILDING-MOUNTED EQUIPMENT INCLUDING, BUT NOT LIMITED TO, MECHANICAL EQUIPMENT, UTILITIES METER BANKS, AND COOLERS MUST BE SCREENED FROM PUBLIC VIEW WITH THREE-SIDED LANDSCAPING OR WITH AN ARCHITECTURAL TREATMENT COMPATIBLE WITH THE BUILDING ARCHITECTURE

CENTAUR ANIMAL HEALTH  
W PITTMAN ST.

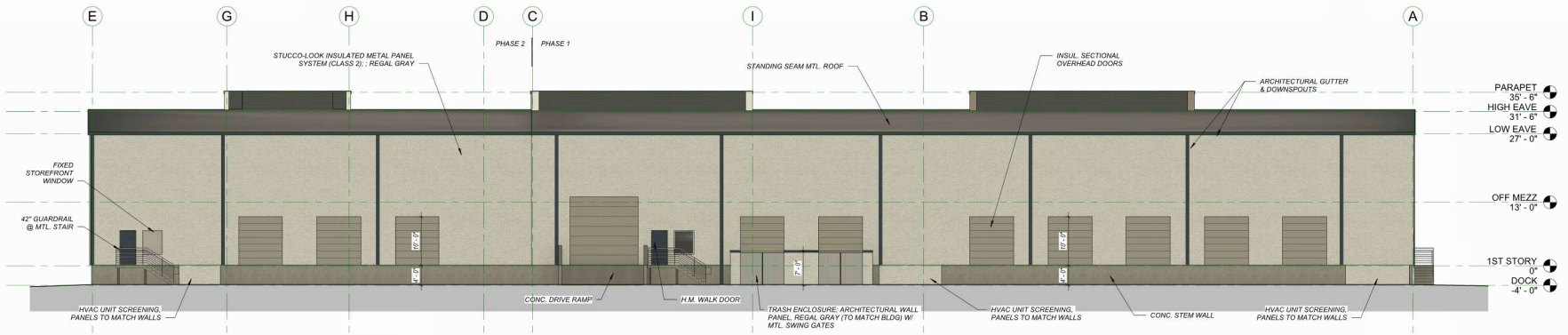


1100 E. 10th St.  
Lawrence, Kansas 66044  
785 - 747 - 5806

ELEVATIONS - PHASE 2

Date: 20250917  
Drawn by: SJH  
Checked by: SCH  
Revisions:  
REV. 3 - 2025/10/31

A2.2

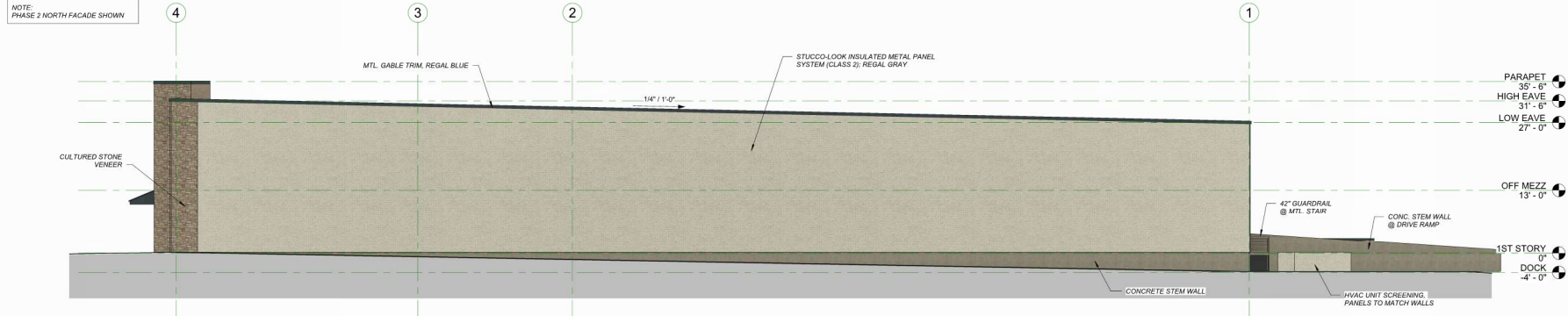


**1 WEST ELEVATION PHASE 2**  
3/32" = 1'-0"

**MATERIALS:**

TOTAL WEST ELEVATION:	8,427 S.F.	- 100%
CLASS I:	40 S.F.	- 4.8%
CLASS II:	5,948 S.F.	- 70.4%
CLASS IV:	1,650 S.F.	- 19.6%
CONCRETE:	792 S.F.	- 9.4%

**CLASS I (GLAZING) & CLASS II (STUCCO-LOOK PANEL) COMBINE FOR 75.0% OF FACADE**



**2 NORTH ELEVATION PHASE 2**  
3/32" = 1'-0"

**MATERIALS:**

TOTAL SOUTH ELEVATION:	6,987 S.F.	- 100%
CLASS I:	304 S.F.	- 4.4%
CLASS II:	6,098 S.F.	- 87.2%
CLASS IV:	143 S.F.	- 2.0%
CONCRETE:	444 S.F.	- 6.4%

**CLASS I (STONE VENEER) & CLASS II (STUCCO-LOOK PANEL) COMBINE FOR 91.6% OF FACADE**

CENTAUR ANIMAL HEALTH  
W PITTMAN ST.



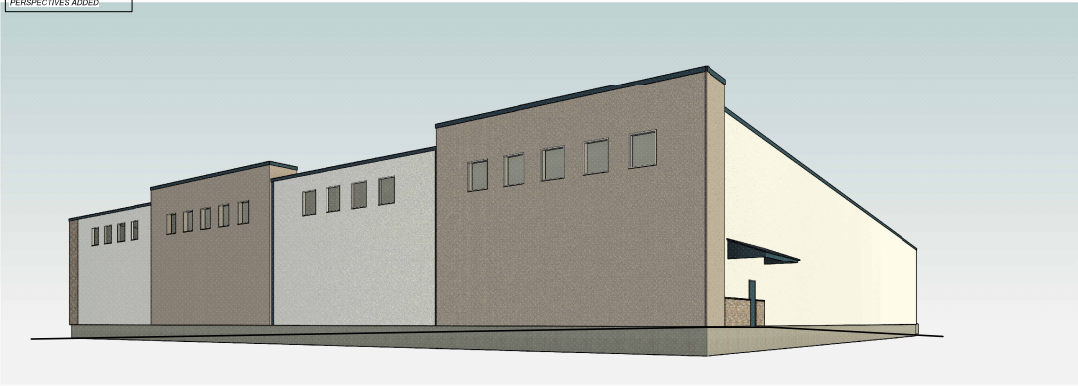
1180 Rhode Island St.  
Lawrence, Kansas 66544  
785 - 749 - 5806

ELEVATIONS - PHASE 2

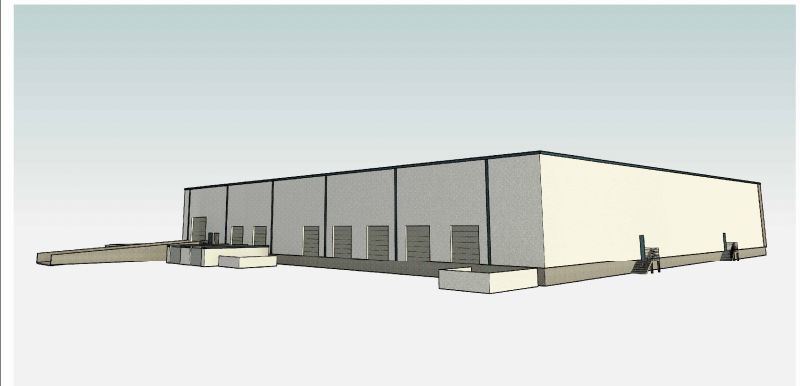
Date: 20250917  
Drawn by: SJB  
Checked by: SCH  
Revisions:  
REV. 3 - 2025/10/31

A2.3

NOTE: PHASE 1 STAND-ALONE PERSPECTIVES ADDED.



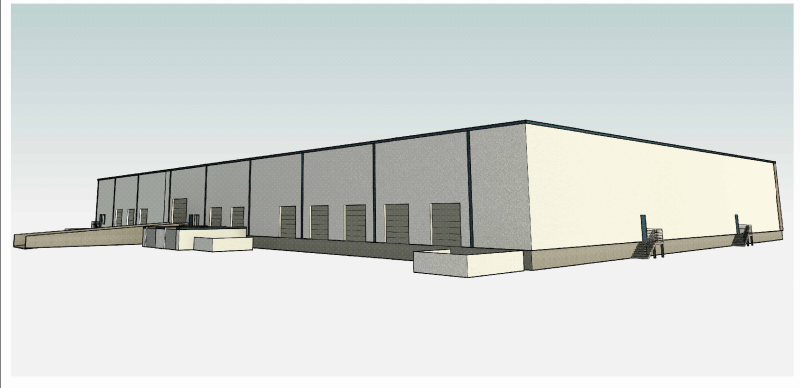
1 PHASE 1 - NORTHEAST PERSPECTIVE



2 PHASE 1 - SOUTHWEST PERSPECTIVE



3 PHASE 2 - NORTHEAST PERSPECTIVE



4 PHASE 2 - SOUTHWEST PERSPECTIVE

CENTAUR ANIMAL HEALTH  
W PITTMAN ST.



1100 E. Ohio Blvd. St.  
Lawrence, Kansas 66044  
785 - 747 - 5806

PERSPECTIVES  
Date: 20250917  
Drawn by: SJH  
Checked by: SCM  
Revision:  
REV. 3 - 2025/10/31

A2.4