

SITE / FLOOR PLAN  
SCALE: 1" = 100'-0"

INTERMODAL BUILDING 1 - LOT 1 (BUILDING 2 SIMILAR)

175TH STREET (PUBLIC) EXPRESSWAY

Olathe, Kansas

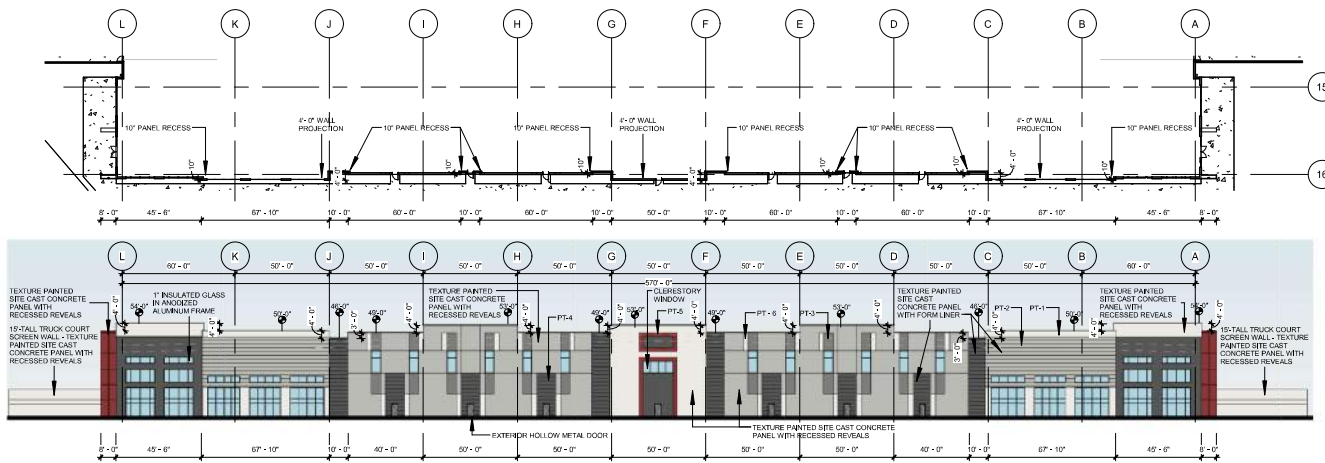
SITE / FLOOR PLAN

123089.00

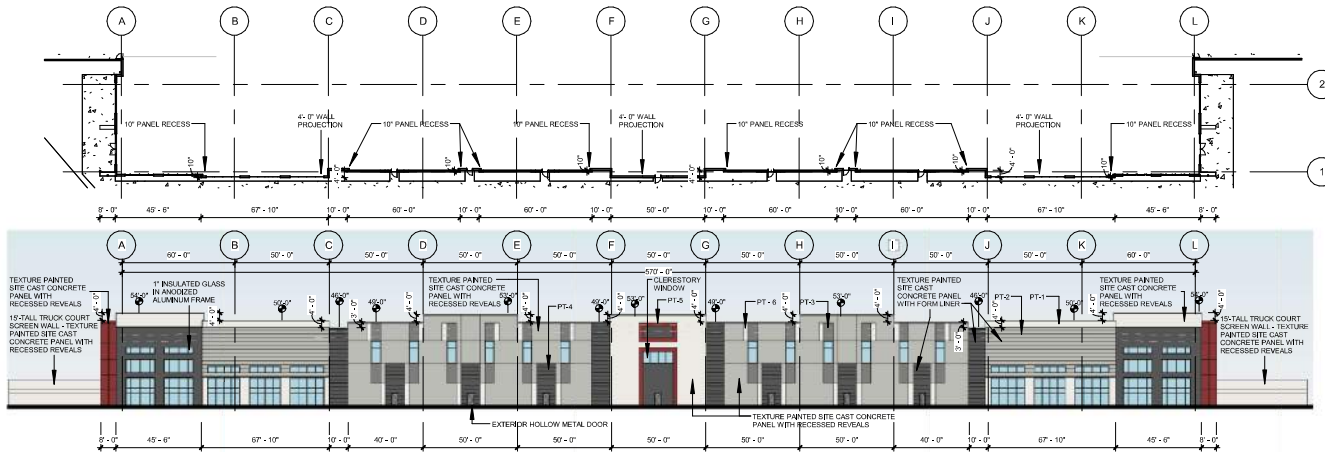
03/15/2024

PANATTONI®

gray



OVERALL BUILDING #1 EAST ELEVATION (BUILDING #2 EAST ELEVATION SIMILAR)  
SCALE: 1" = 60'-0"



OVERALL BUILDING #1 WEST ELEVATION (BUILDING #2 WEST ELEVATION SIMILAR)  
SCALE: 1" = 60'-0"

## INTERMODAL BUILDING 1 - LOT 1 (BUILDING 2 SIMILAR)

Olathe, Kansas

EXTERIOR  
ELEVATIONS

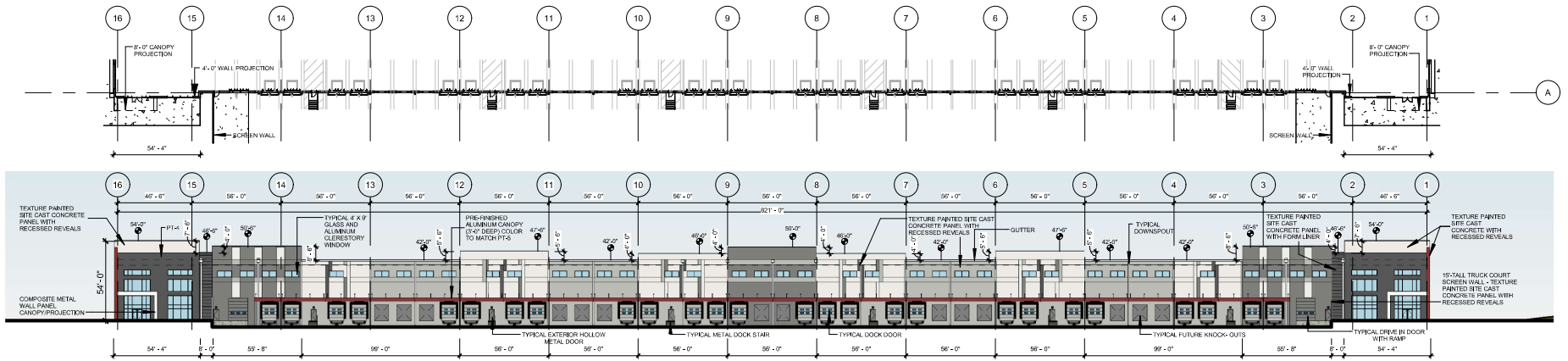
123089.00

03/15/2024

PANATTONI

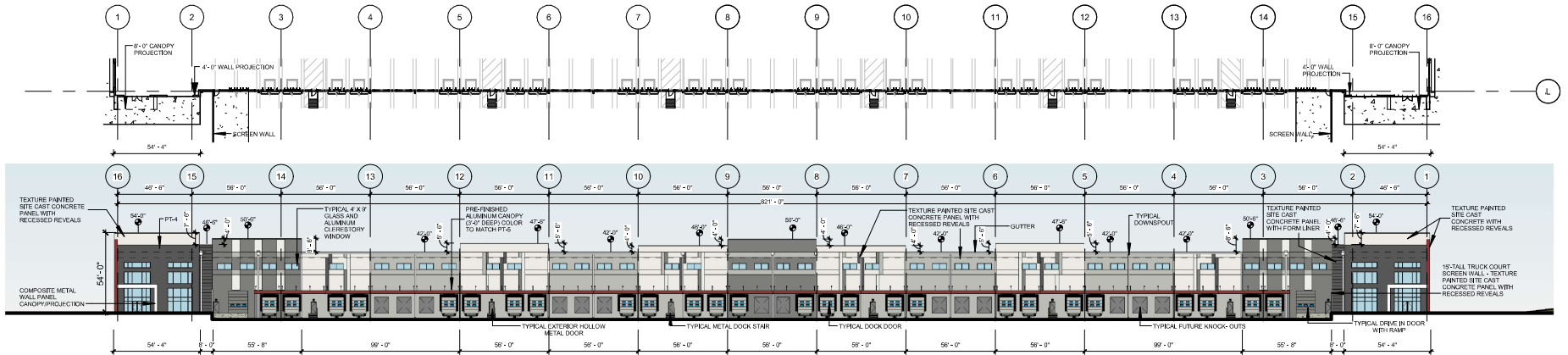
gray

TOP OF PARAPET HEIGHTS ARE MEASURED FROM FINISH FLOOR.  
IF REQUIRED CLEARANCE UNDER ROOF STRUCTURE IS DEEMED  
TO BE LESS THAN 4'-0" BUILDINGS MAY BE SHORTER THAN NOTED.  
EXTERIOR GROUND MOUNTED OR BUILDING MOUNTED  
EQUIPMENT INCLUDING BUT NOT LIMITED TO MECHANICAL  
EQUIPMENT UTILITIES METER BANKS AND COOLERS MUST BE  
SCREENED FROM PUBLIC VIEW WITH THREE (3) SIDED  
LANDSCAPING OR AN ARCHITECTURAL TREATMENT THAT IS  
COMPATIBLE WITH THE BUILDING ARCHITECTURE.



OVERALL BUILDING #1 NORTH ELEVATION (BUILDING #2 NORTH ELEVATION SIMILAR)

SCALE: 1" = 60'-0"



OVERALL BUILDING #1 SOUTH ELEVATION (BUILDING #2 SOUTH ELEVATION SIMILAR)

SCALE: 1" = 60'-0"

TOP OF PARAPET HEIGHTS ARE MEASURED FROM FINISH FLOOR. IF REQUIRED CLEARANCE UNDER ROOF STRUCTURE IS DEEMED TO BE LESS THAN 4'-0" BUILDING MAY BE SHORTER THAN NOTED. EXTERIOR GROUND MOUNTED OR BUILDING MOUNTED EQUIPMENT INCLUDING BUT NOT LIMITED TO MECHANICAL EQUIPMENT, UTILITIES METER BANKS AND COOLING MUST BE SCREENED FROM PUBLIC VIEW WITH THREE (3) SIZED LANDSCAPING OR AN ARCHITECTURAL TREATMENT THAT IS COMPATIBLE WITH THE BUILDING ARCHITECTURE.

## INTERMODAL BUILDING 1 - LOT 1 (BUILDING 2 SIMILAR)

Olathe, Kansas

EXTERIOR  
ELEVATIONS

123089.00

03/15/2024

PANATTONI

gray

EAST ELEVATION MATERIAL CALCULATIONS: (PRIMARY FACADE)

OVERALL WALL AREA:	30,202 SQ.FT.	
CLASS 1 AND 2 MATERIALS: CLEAR GLAZING, CONC. WITH FORM LINER REVEALS, CONC. WITH TEXTURED PAINT, & METAL PANELS		
GLAZING AREA:	4,521 SQ.FT.	15%
CONC. W/ FORM LINER:	6,253 SQ.FT.	21%
CONC. W/ TEXTRD. PAINT:	19,257 SQ.FT.	64%
METAL PANELS:	0 SQ.FT.	0%
TOTAL:	30,031 SQ.FT.	100%
CLASS 3 AND 4 MATERIALS: METAL		
METAL:	171 SQ.FT.	<1%

WEST ELEVATION MATERIAL CALCULATIONS: (PRIMARY FACADE)

OVERALL WALL AREA:	30,202 SQ.FT.	
CLASS 1 AND 2 MATERIALS: CLEAR GLAZING, CONC. WITH FORM LINER REVEALS, CONC. WITH TEXTURED PAINT, & METAL PANELS		
GLAZING AREA:	4,521 SQ.FT.	15%
CONC. W/ FORM LINER:	6,253 SQ.FT.	21%
CONC. W/ TEXTRD. PAINT:	19,257 SQ.FT.	64%
METAL PANELS:	0 SQ.FT.	0%
TOTAL:	30,031 SQ.FT.	100%
CLASS 3 AND 4 MATERIALS: METAL		
METAL:	171 SQ.FT.	<1%

EXTERIOR MATERIALS & FINISHES LEGEND

OVERHEAD DOORS: MFR. STANDARD PRE-FINISHED TO MATCH COLOR 2

GUTTERS AND DOWNSPOUTS: PRE-FINISHED TO MATCH COLOR 2

ALUMINUM CAP FLASHING TO MATCH COLOR 4

STOREFRONT: ANODIZED ALUMINUM FRAMES. FINISH: BLACK

GLASS: 1" INSULATED, LOW E GLASS SOLORBAN 60 (2)-CLEAR (EQUAL TO U-VALUE .29)

HOLLOW METAL DOORS: PAINTED TO MATCH COLOR 3

ROOFING MATERIAL IS IN COMPLIANCE AS CLASS II MEMBRANE

CAULK: PAINTED TO MATCH BUILDING ADJACENT COLOR

FORM LINER CONCRETE PANELS TO BE TEXTURED WITH SICA FORM LINER #310, SEE ELEVATIONS FOR LOCATION

COMPOSITE METAL PANELS: ALUCOBOND - FINISHED TO MATCH PT-6

PREFINISHED ALUMINUM CANOPY - FINISHED TO MATCH PT-5



FORM LINER

NORTH ELEVATION MATERIAL CALCULATIONS: (SECONDARY FACADE)

OVERALL WALL AREA:	41,412 SQ.FT.	
CLASS 1 AND 2 MATERIALS: CLEAR GLAZING, CONC. WITH FORM LINER REVEALS, CONC. WITH TEXTURED PAINT, & METAL PANELS		
GLAZING AREA:	3,144 SQ.FT.	8%
CONC. W/ FORM LINER:	708 SQ.FT.	2%
CONC. W/ TEXTRD. PAINT:	32,718 SQ.FT.	78%
METAL PANELS:	1,620 SQ.FT.	4%
TOTAL:	38,190 SQ.FT.	92%
CLASS 3 AND 4 MATERIALS: METAL		
METAL:	3,222 SQ.FT.	8%

SOUTH ELEVATION MATERIAL CALCULATIONS: (PRIMARY FACADE)

OVERALL WALL AREA:	41,412 SQ.FT.	
CLASS 1 AND 2 MATERIALS: CLEAR GLAZING, CONC. WITH FORM LINER REVEALS, CONC. WITH TEXTURED PAINT, & METAL PANELS		
GLAZING AREA:	3,144 SQ.FT.	8%
CONC. W/ FORM LINER:	708 SQ.FT.	2%
CONC. W/ TEXTRD. PAINT:	32,718 SQ.FT.	78%
METAL PANELS:	1,620 SQ.FT.	4%
TOTAL:	38,190 SQ.FT.	92%
CLASS 3 AND 4 MATERIALS: METAL		
METAL:	3,222 SQ.FT.	8%

COLOR LEGEND:

SHERWIN-WILLIAMS	
COLOR 1:	PT-1 SW 7005 PURE WHITE
COLOR 2:	PT-2 SW 7065 ARGOS
COLOR 3:	PT-3 SW 7067 CITYSCAPE
COLOR 4:	PT-4 SW 7674 PEPPERCORN
COLOR 5:	PT-5 SW 6321 REDBAY
COLOR 6:	PT-6 SW 7006 EXTRA WHITE



ACM - COMPOSITE METAL PANEL

UDO 18.15.020.G.10.b

REQUIRED MATERIALS - PRIMARY FACADE:  
CLASS 1 AND/OR CLASS 2 75%  
CLASS 4 MAXIMUM 25%  
FIRST FLOOR GLAZING 15%

REQUIRED MATERIALS - SECONDARY FACADE:  
CLASS 1,2 AND/OR 3 40%  
CLASS 4 MAXIMUM 50%



PREFINISHED ALUMINUM CANOPY



TEXTURED PAINT

INTERMODAL BUILDING 1 - LOT 1 (BUILDING 2 SIMILAR)

Olathe, Kansas

MATERIAL  
CALCULATIONS

123089.00

03/15/2024

PANATTONI

gray





**INTERMODAL BUILDING 1 - LOT 1 (BUILDING 2 SIMILAR)**

Olathe, Kansas

BUILDING  
PERSPECTIVE  
RENDERING

123089.00

03/15/24

 **PANATTONI®**

 **gray**





BUILDING 1 - LOT 1 SW STREET PERSPECTIVE

**INTERMODAL BUILDING 1 - LOT 1 (BUILDING 2 SIMILAR)**

Olathe, Kansas

PERSPECTIVE  
RENDERING

123089.00

03/15/2024

 **PANATTONI®**

 **gray**





BUILDING 2 - LOT 2 SE STREET PERSPECTIVE

INTERMODAL BUILDING 1 - LOT 1 (BUILDING 2 SIMILAR)

Olathe, Kansas

PERSPECTIVE  
RENDERING

123089.00

03/15/2024



PANATTONI®

gray

PUBLIC STREET A



84 TRAILER SPACES

(35) EQUIPPED DOCKS  
(20) FUTURE KNOCKOUTS

LOT 3  
BUILDING 3  
1,067' X 470'  
501,490 S.F.

PUBLIC STREET A

GLEASON STREET (PUBLIC)

(35) EQUIPPED DOCKS  
(20) FUTURE KNOCKOUTS

106 TRAILER SPACES

18'-0" TALL TRUCK COURT  
SCREEN WALL  
(TYP.)

SITE / FLOOR PLAN  
SCALE: 1" = 100'-0"

INTERMODAL BUILDING 3 - LOT 3 (BUILDING 5,7,8 SIMILAR)

Olathe, Kansas

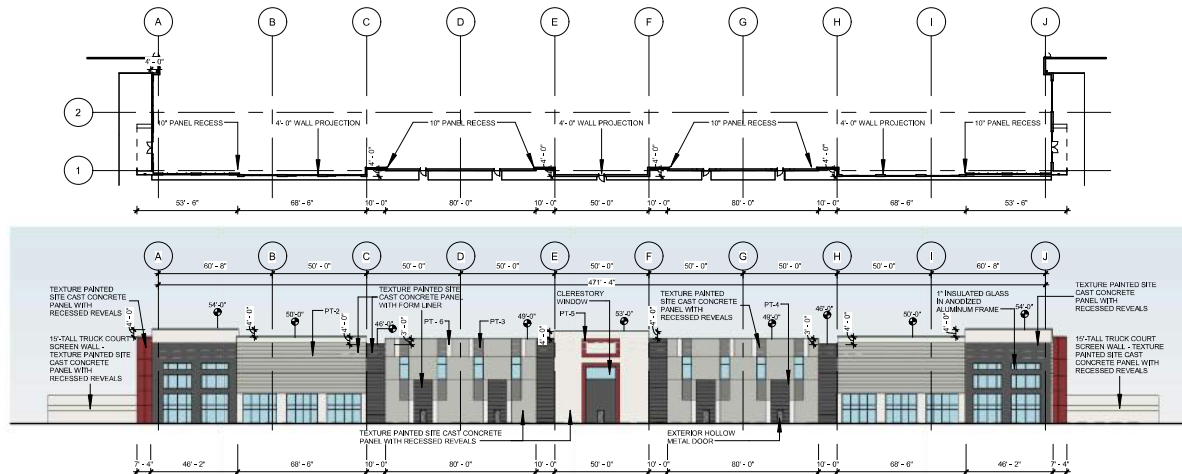
SITE / FLOOR PLAN

123089.00

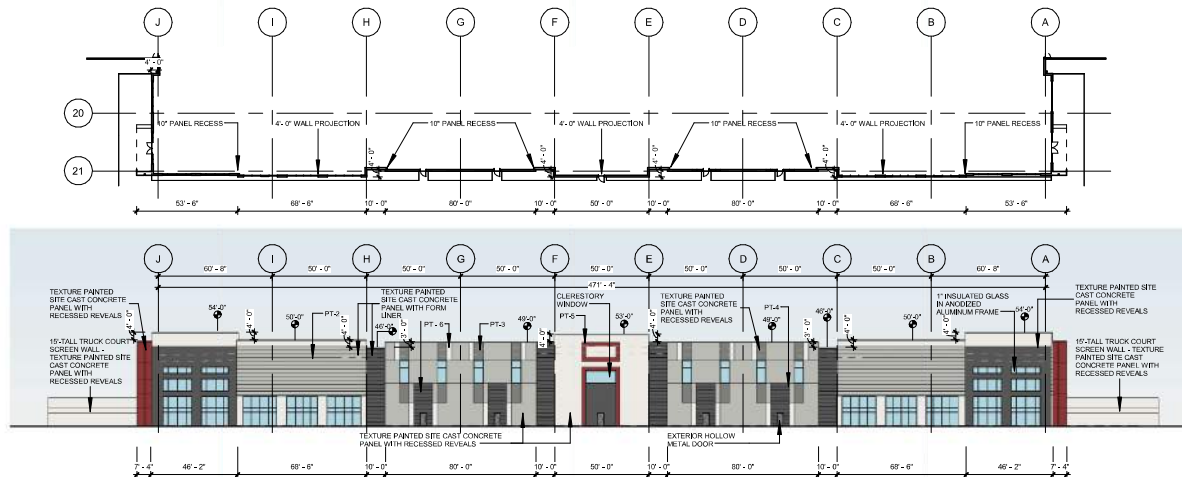
03/15/2024

 PANATTONI®

 gray



OVERALL BUILDING #3 WEST ELEVATION (BLDG. #5 & #7 WEST ELEV. AND BLDG. #8 SOUTH ELEV. ARE SIMILAR)



OVERALL BUILDING #3 EAST ELEVATION (BLDG. #5 & #7 EAST ELEV. AND BLDG. #8 NORTH ELEV. ARE SIMILAR)

TOP OF PARAPET HEIGHTS ARE MEASURED FROM FINISH FLOOR. IF REQUIRED CLEARANCE UNDER ROOF STRUCTURE IS DEEMED TO BE LESS THAN 4'-0" BUILDINGS MAY BE SHORTER THAN NOTED. EXTERIOR GROUND MOUNTED OR BUILDING MOUNTED EQUIPMENT INCLUDING BUT NOT LIMITED TO MECHANICAL EQUIPMENT UTILITIES METER BANKS AND COOLERS MUST BE SCREENED FROM PUBLIC VIEW WITH THREE (3) FOOTED LANDSCAPING OR AN ARCHITECTURAL TREATMENT THAT IS COMPATIBLE WITH THE BUILDING ARCHITECTURE.

## INTERMODAL BUILDING 3 - LOT 3 (BUILDING 5,7,8 SIMILAR)

Olathe, Kansas

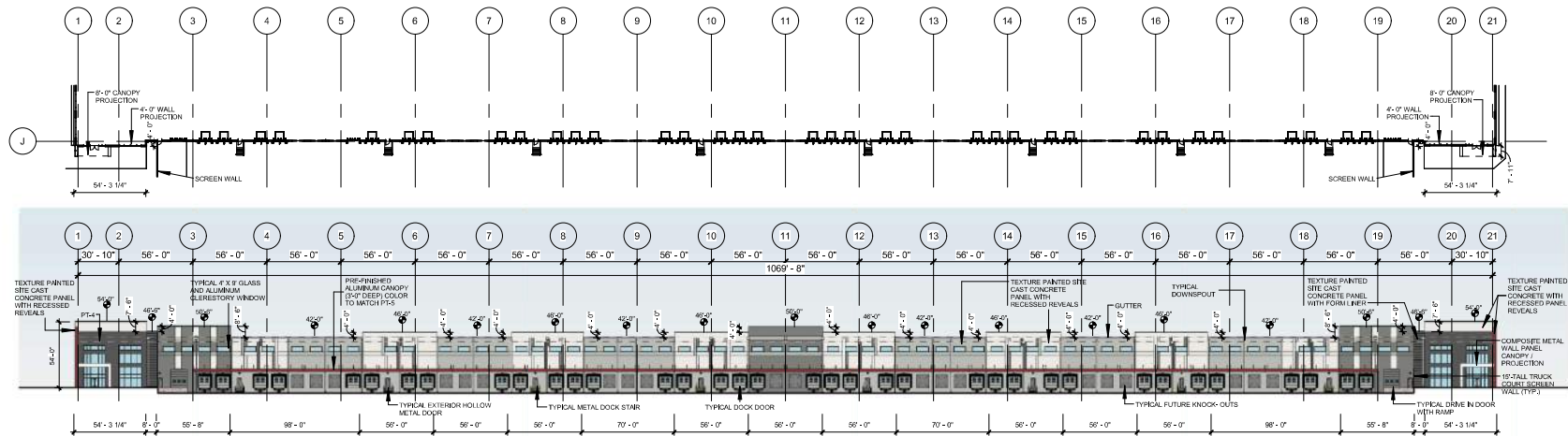
EXTERIOR  
ELEVATIONS

123089.00

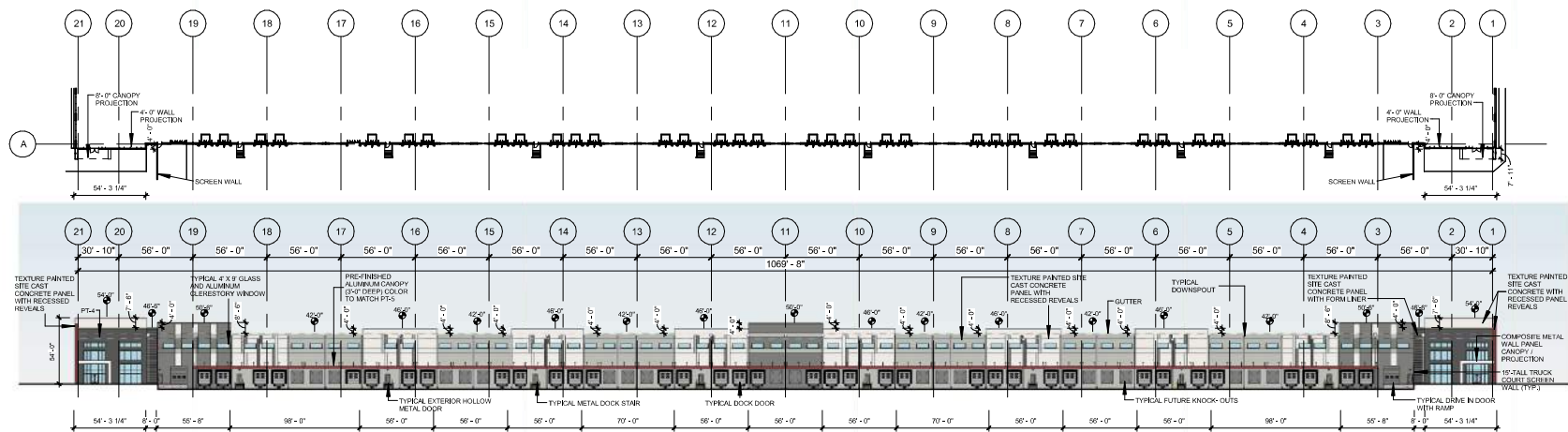
03/15/2024

PANATTONI gray





OVERALL BUILDING #3 SOUTH ELEVATION (BUILDING #5 & #7 SOUTH ELEVATION AND BUILDING #8 EAST ELEVATION ARE SIMILAR)



OVERALL BUILDING #3 NORTH ELEVATION (BUILDING #5 & #7 NORTH ELEVATION AND BUILDING #8 WEST ELEVATION ARE SIMILAR)

TOP OF PARAPET HEIGHTS ARE MEASURED FROM FINISH FLOOR. IF REQUIRED CLEARANCE UNDER ROOF STRUCTURE IS DEEMED TO BE LESS THAN 4' BUILDINGS MAY BE SHORTER THAN NOTED. EXTERIOR GROUND MOUNTED OR BUILDING MOUNTED EQUIPMENT INCLUDING BUT NOT LIMITED TO MECHANICAL UNITS, UTILITIES, METER BANKS AND COOLERS MUST BE SCREENED FROM PUBLIC VIEW WITH THREE (3) FOOT LANDSCAPING OR AN ARCHITECTURAL TREATMENT THAT IS COMPATIBLE WITH THE BUILDING ARCHITECTURE.

## INTERMODAL BUILDING 3 - LOT 3 (BUILDING 5,7,8 SIMILAR)

Olathe, Kansas

EXTERIOR  
ELEVATIONS

123089.00

03/15/2024

PANATTONI

gray

EAST ELEVATION MATERIAL CALCULATIONS: (PRIMARY FACADE)

OVERALL WALL AREA:	24,960 SQ.FT.	
CLASS 1 AND 2 MATERIALS: CLEAR GLAZING, CONC. WITH FORM LINER REVEALS, CONC. WITH TEXTURED PAINT, & METAL PANELS		
GLAZING AREA:	3,914 SQ.FT.	15%
CONC. W/ FORM LINER:	6,185 SQ.FT.	25%
CONC. W/ TEXTRD. PAINT:	14,738 SQ.FT.	59%
METAL PANELS:	0 SQ.FT.	0%
TOTAL:	24,837 SQ.FT.	99%
CLASS 3 AND 4 MATERIALS: METAL		
METAL:	123 SQ.FT.	1%

WEST ELEVATION MATERIAL CALCULATIONS: (PRIMARY FACADE)

OVERALL WALL AREA:	24,960 SQ.FT.	
CLASS 1 AND 2 MATERIALS: CLEAR GLAZING, CONC. WITH FORM LINER REVEALS, CONC. WITH TEXTURED PAINT, & METAL PANELS		
GLAZING AREA:	3,914 SQ.FT.	15%
CONC. W/ FORM LINER:	6,185 SQ.FT.	25%
CONC. W/ TEXTRD. PAINT:	14,738 SQ.FT.	59%
METAL PANELS:	0 SQ.FT.	0%
TOTAL:	24,837 SQ.FT.	99%
CLASS 3 AND 4 MATERIALS: METAL		
METAL:	123 SQ.FT.	1%

EXTERIOR MATERIALS & FINISHES LEGEND

OVERHEAD DOORS: MFR. STANDARD PRE-FINISHED TO MATCH COLOR 2

GUTTERS AND DOWNSPOUTS: PRE-FINISHED TO MATCH COLOR 2

ALUMINUM CAP FLASHING TO MATCH COLOR 4

STOREFRONT: ANODIZED ALUMINUM FRAMES, FINISH: BLACK

GLASS: 1" INSULATED, LOW E GLASS SOLORBAN 60 (2)-CLEAR (EQUAL TO U-VALUE .29)

HOLLOW METAL DOORS: PAINTED TO MATCH COLOR 3

ROOFING MATERIAL IS IN COMPLIANCE AS CLASS II MEMBRANE

CAULK: PAINTED TO MATCH BUILDING ADJACENT COLOR

FORM LINER CONCRETE PANELS TO BE TEXTURED WITH SICA FORM LINER #310. SEE ELEVATIONS FOR LOCATION

COMPOSITE METAL PANELS: ALUCOBOND - FINISHED TO MATCH PT-6

PREFINISHED ALUMINUM CANOPY - FINISHED TO MATCH PT-5



FORM LINER

NORTH ELEVATION MATERIAL CALCULATIONS: (PRIMARY FACADE)

OVERALL WALL AREA:	53,080 SQ.FT.	
CLASS 1 AND 2 MATERIALS: CLEAR GLAZING, CONC. WITH FORM LINER REVEALS, CONC. WITH TEXTURED PAINT, & METAL PANELS		
GLAZING AREA:	4,015 SQ.FT.	8%
CONC. W/ FORM LINER:	680 SQ.FT.	1%
CONC. W/ TEXTRD. PAINT:	42,303 SQ.FT.	80%
METAL PANELS:	2,168 SQ.FT.	4%
TOTAL:	49,166 SQ.FT.	93%
CLASS 3 AND 4 MATERIALS: METAL		
METAL:	3,914 SQ.FT.	7%

SOUTH ELEVATION MATERIAL CALCULATIONS: (SECONDARY FACADE)

OVERALL WALL AREA:	53,080 SQ.FT.	
CLASS 1 AND 2 MATERIALS: CLEAR GLAZING, CONC. WITH FORM LINER REVEALS, CONC. WITH TEXTURED PAINT, & METAL PANELS		
GLAZING AREA:	4,015 SQ.FT.	8%
CONC. W/ FORM LINER:	680 SQ.FT.	1%
CONC. W/ TEXTRD. PAINT:	42,303 SQ.FT.	80%
METAL PANELS:	2,168 SQ.FT.	4%
TOTAL:	49,166 SQ.FT.	93%
CLASS 3 AND 4 MATERIALS: METAL		
METAL:	3,914 SQ.FT.	7%

COLOR LEGEND:

SHERWIN-WILLIAMS			
COLOR 1:	PT-1	SW 7005 PURE WHITE	PT 1
COLOR 2:	PT-2	SW 7065 ARGOS	PT 2
COLOR 3:	PT-3	SW 7067 CITYSCAPE	PT 3
COLOR 4:	PT-4	SW 7674 PEPPERCORN	PT 4
COLOR 5:	PT-5	SW 6321 REDBAY	PT 5
COLOR 6:	PT-6	SW 7006 EXTRA WHITE	PT 6



ACM - COMPOSITE METAL PANEL

UDO 18.15.020.G-10.b

REQUIRED MATERIALS - PRIMARY FACADE:

CLASS 1 AND/OR CLASS 2	75%
CLASS 4 MAXIMUM	25%
FIRST FLOOR GLAZING	15%

REQUIRED MATERIALS - SECONDARY FACADE:

CLASS 1,2 AND/OR 3	40%
CLASS 4 MAXIMUM	50%



PRE-FINISHED ALUMINUM CANOPY



TEXTURED PAINT

INTERMODAL BUILDING 3 - LOT 3 (BUILDING 5,7,8 SIMILAR)

Olathe, Kansas

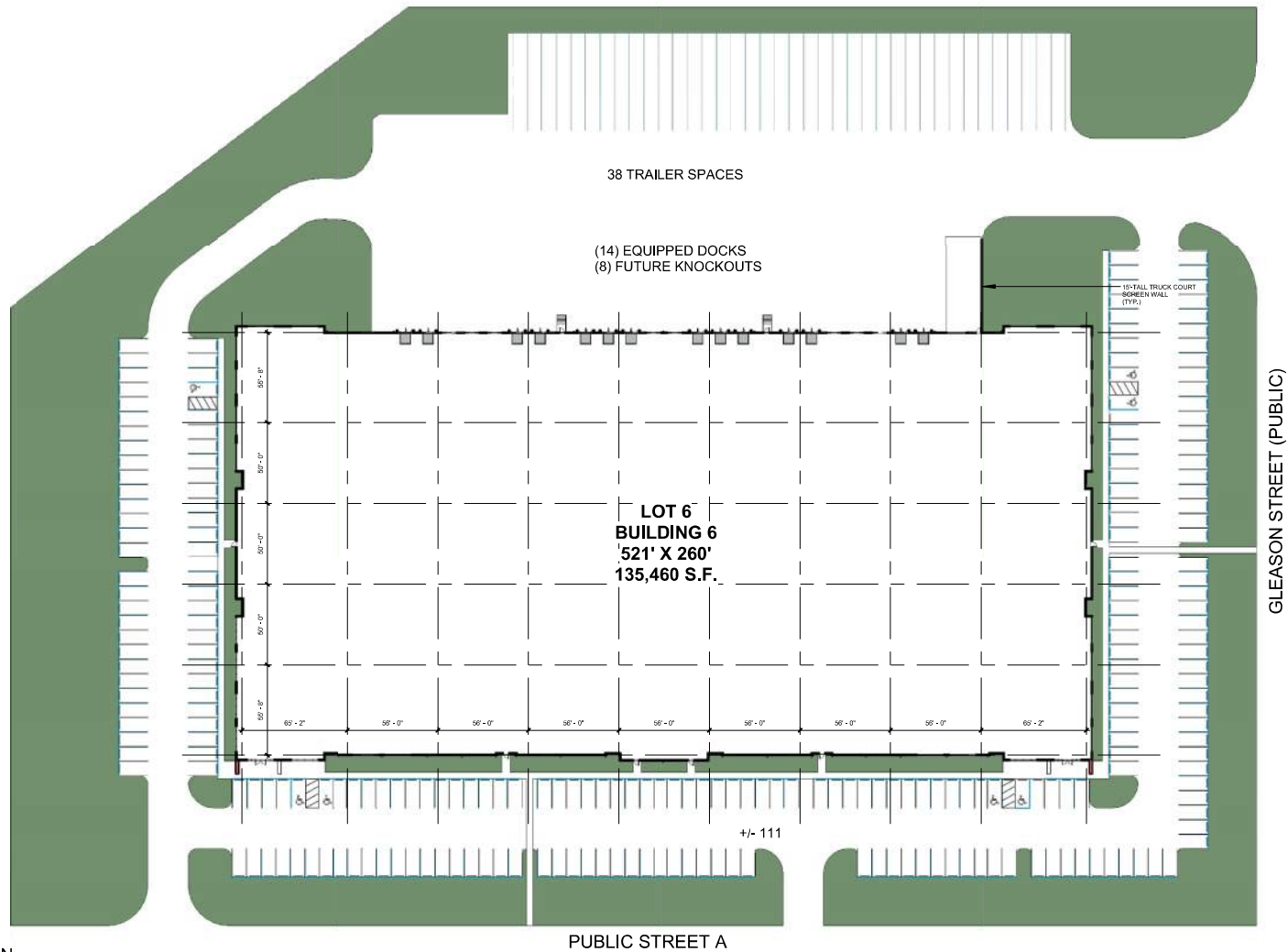
MATERIAL  
CALCULATIONS

123089.00

03/15/2024

PANATTONI

gray



SITE / FLOOR PLAN  
SCALE: 1" = 100'-0"

## INTERMODAL BUILDING 6 - LOT 6 (BUILDING 4 SIMILAR)

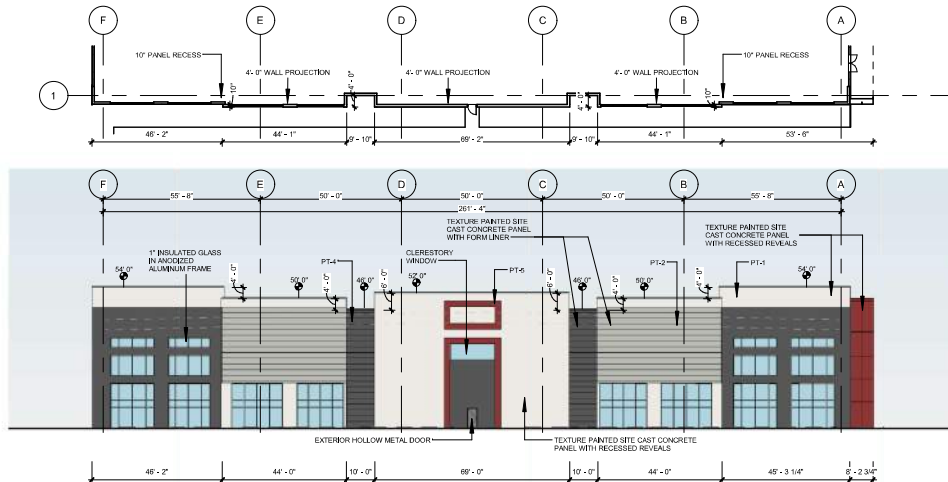
Olathe, Kansas

SITE / FLOOR PLAN

123089.00

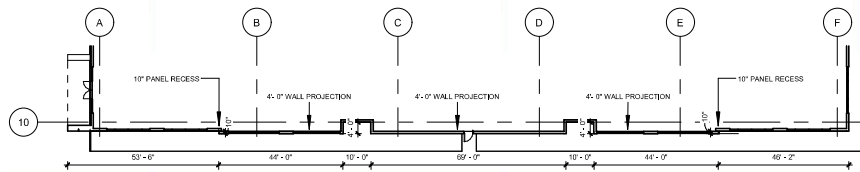
03/15/2024

**PANATTONI** gray



OVERALL BUILDING #6 EAST ELEVATION

SCALE: 1" = 40'-0"



OVERALL BUILDING #6 WEST ELEVATION (BUILDING #4 EAST AND WEST ELEVATION SIMILAR)

SCALE: 1" = 40'-0"

## INTERMODAL BUILDING 6 - LOT 6 (BUILDING 4 SIMILAR)

Olathe, Kansas

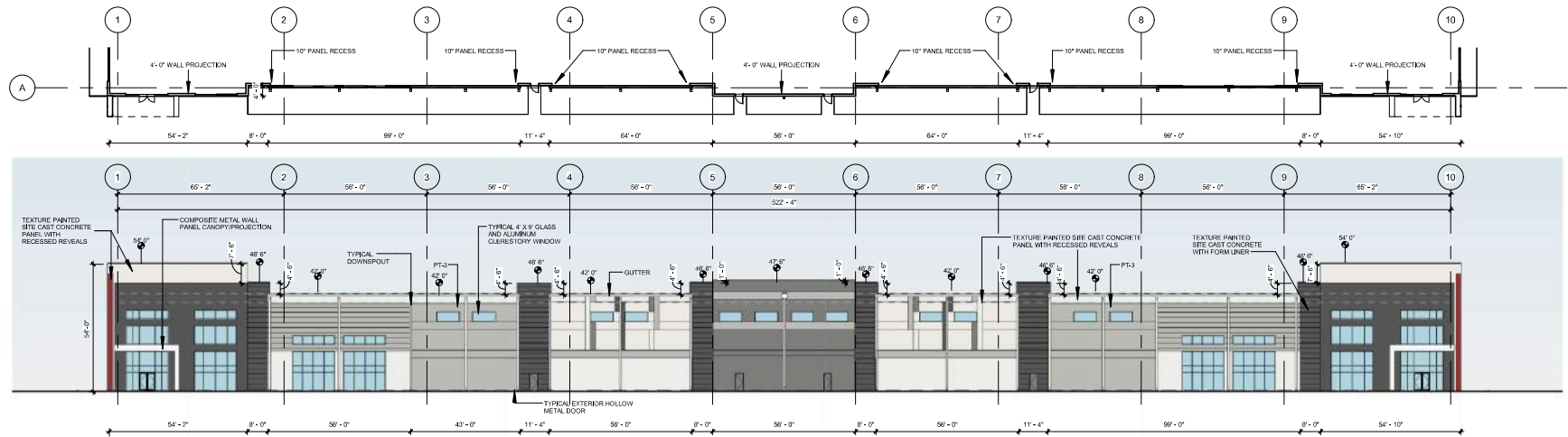
EXTERIOR  
ELEVATIONS

123089.00

03/15/2024

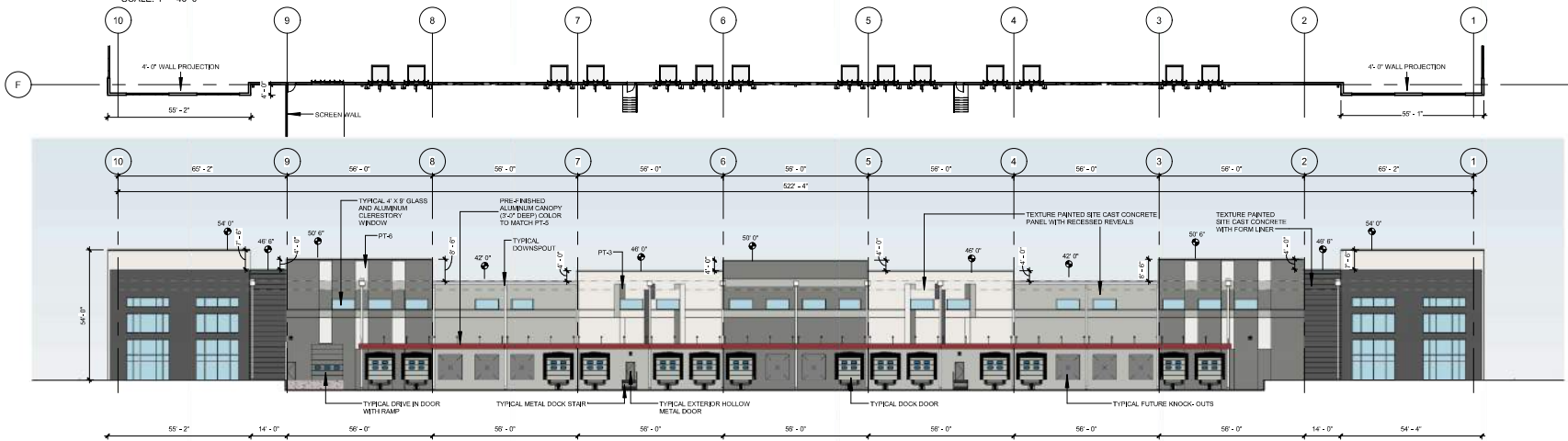
PANATTONI gray

\*TOP OF PARAPET HEIGHTS ARE MEASURED FROM FINISH FLOOR.  
IF REQUIRED CLEARANCE UNDER ROOF STRUCTURE IS DEEMED  
TO BE LESS THAN 4'-0" BUILDINGS MAY BE SHORTER THAN NOTED.  
EXTERIOR GROUND MOUNTED OR BUILDING MOUNTED  
EQUIPMENT INCLUDING BUT NOT LIMITED TO MECHANICAL  
EQUIPMENT, UTILITIES METER BANKS AND COOLERS MUST BE  
SCREENED FROM PUBLIC VIEW WITH THREE (3) SIDED  
LANDSCAPING OR AN ARCHITECTURAL TREATMENT THAT IS  
COMPATIBLE WITH THE BUILDING ARCHITECTURE.



OVERALL BUILDING #6 SOUTH ELEVATION (BUILDING #4 SOUTH ELEVATION SIMILAR)

SCALE: 1" = 40'-0"



OVERALL BUILDING #6 NORTH ELEVATION (BUILDING #4 NORTH ELEVATION SIMILAR)

SCALE: 1" = 40'-0"

TOP OF PARAPET HEIGHTS ARE MEASURED FROM FINISH FLOOR. IF REQUIRED CLEARANCE UNDER ROOF STRUCTURE IS DEEMED TO BE LESS THAN 4'-0" BUILDINGS MAY BE SHORTER THAN NOTED. EXTERIOR GROUND MOUNTED OR BUILDING MOUNTED EQUIPMENT INCLUDING BUT NOT LIMITED TO MECHANICAL EQUIPMENT, UTILITIES METER BANKS AND COOLERS MUST BE SCREENED FROM PUBLIC VIEW WITH THREE (3) SHEDD LANSKAPING OR AN ARCHITECTURAL TREATMENT THAT IS COMPATIBLE WITH THE BUILDING ARCHITECTURE.

## INTERMODAL BUILDING 6 - LOT 6 (BUILDING 4 SIMILAR)

Olathe, Kansas

EXTERIOR  
ELEVATIONS

123089.00

03/15/2024

PANATTONI





**EAST ELEVATION MATERIAL CALCULATIONS: (PRIMARY FACADE)**

OVERALL WALL AREA:	14,595 SQ.FT.
CLASS 1 AND 2 MATERIALS: CLEAR GLAZING, CONC. WITH FORM LINER REVEALS, CONC. WITH TEXTURED PAINT, & METAL PANELS	
GLAZING AREA:	2,189 SQ.FT. 15%
CONC. W/ FORM LINER:	3,251 SQ.FT. 22%
CONC. W/ TEXTRD. PAINT:	9,131 SQ.FT. 63%
METAL PANELS:	0 SQ.FT. 0%
TOTAL:	14,571 SQ.FT. 100%
CLASS 3 AND 4 MATERIALS: METAL	
METAL:	24 SQ.FT. <1%

**WEST ELEVATION MATERIAL CALCULATIONS: (SECONDARY FACADE)**

OVERALL WALL AREA:	14,595 SQ.FT.
CLASS 1 AND 2 MATERIALS: CLEAR GLAZING, CONC. WITH FORM LINER REVEALS, CONC. WITH TEXTURED PAINT, & METAL PANELS	
GLAZING AREA:	2,189 SQ.FT. 15%
CONC. W/ FORM LINER:	3,251 SQ.FT. 22%
CONC. W/ TEXTRD. PAINT:	9,131 SQ.FT. 63%
METAL PANELS:	0 SQ.FT. 0%
TOTAL:	14,571 SQ.FT. 100%
CLASS 3 AND 4 MATERIALS: METAL	
METAL:	24 SQ.FT. <1%

**EXTERIOR MATERIALS & FINISHES LEGEND**

OVERHEAD DOORS: MFR. STANDARD PRE-FINISHED TO MATCH COLOR 2

GUTTERS AND DOWNSPOUTS: PRE-FINISHED TO MATCH COLOR 2

ALUMINUM CAP FLASHING TO MATCH COLOR 4

STOREFRONT: ANODIZED ALUMINUM FRAMES. FINISH: BLACK

GLASS: 1" INSULATED, LOW E GLASS SOLORBAN 60 (2)-CLEAR (EQUAL TO U-VALUE .29)

HOLLOW METAL DOORS: PAINTED TO MATCH COLOR 3

ROOFING MATERIAL IS IN COMPLIANCE AS CLASS II MEMBRANE

CAULK: PAINTED TO MATCH BUILDING ADJACENT COLOR

FORM LINER CONCRETE PANELS TO BE TEXTURED WITH SICA FORM LINER #310. SEE ELEVATIONS FOR LOCATION



**FORM LINER**

**NORTH ELEVATION MATERIAL CALCULATIONS: (SECONDARY FACADE)**

OVERALL WALL AREA:	27,037 SQ.FT.
CLASS 1 AND 2 MATERIALS: CLEAR GLAZING, CONC. WITH FORM LINER REVEALS, CONC. WITH TEXTURED PAINT, & METAL PANELS	
GLAZING AREA:	2,424 SQ.FT. 9%
CONC. W/ FORM LINER:	1,214 SQ.FT. 4%
CONC. W/ TEXTRD. PAINT:	21,114 SQ.FT. 78%
METAL PANELS:	749 SQ.FT. 3%
TOTAL:	25,500 SQ.FT. 94%
CLASS 3 AND 4 MATERIALS: TEXTURE PAINTED CONCRETE & METAL	
METAL:	1,537 SQ.FT. 6%

**SOUTH ELEVATION MATERIAL CALCULATIONS: (PRIMARY FACADE)**

OVERALL WALL AREA:	24,255 SQ.FT.
CLASS 1 AND 2 MATERIALS: CLEAR GLAZING, CONC. WITH FORM LINER REVEALS, CONC. WITH TEXTURED PAINT, & METAL PANELS	
GLAZING AREA:	3,550 SQ.FT. 15%
CONC. W/ FORM LINER:	4,379 SQ.FT. 18%
CONC. W/ TEXTRD. PAINT:	16,041 SQ.FT. 66%
METAL PANELS:	188 SQ.FT. 1%
TOTAL:	24,158 SQ.FT. 100%
CLASS 3 AND 4 MATERIALS: TEXTURE PAINTED CONCRETE & METAL	
METAL:	97 SQ.FT. <1%

**COLOR LEGEND: SHERWIN-WILLIAMS**

COLOR 1:	PT-1	SW 7005 PURE WHITE	PT 1
COLOR 2:	PT-2	SW 7005 ARGOS	PT 2
COLOR 3:	PT-3	SW 7067 CITYSCAPE	PT 3
COLOR 4:	PT-4	SW 7674 PEPPERCORN	PT 4
COLOR 5:	PT-5	SW 6321 REDBAY	PT 5
COLOR 6:	PT-6	SW 7006 EXTRA WHITE	PT 6



**ACM - COMPOSITE METAL PANEL**

**UDO 18.15.020 G.10.b**

REQUIRED MATERIALS - PRIMARY FACADE:	
CLASS 1 AND/OR CLASS 2	75%
CLASS 4 MAXIMUM	25%
FIRST FLOOR GLAZING	15%

**REQUIRED MATERIALS - SECONDARY FACADE:**

CLASS 1,2 AND/OR 3	40%
CLASS 4 MAXIMUM	50%



**PRE-FINISHED ALUMINUM CANOPY**



**TEXTURED PAINT**

**INTERMODAL BUILDING 6 - LOT 6 (BUILDING 4 SIMILAR)**

Olathe, Kansas

**MATERIAL  
CALCULATIONS**

123089.00

03/15/2024

**PANATTONI**

gray