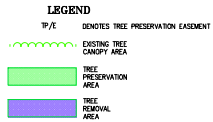
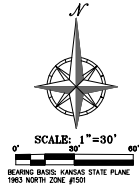
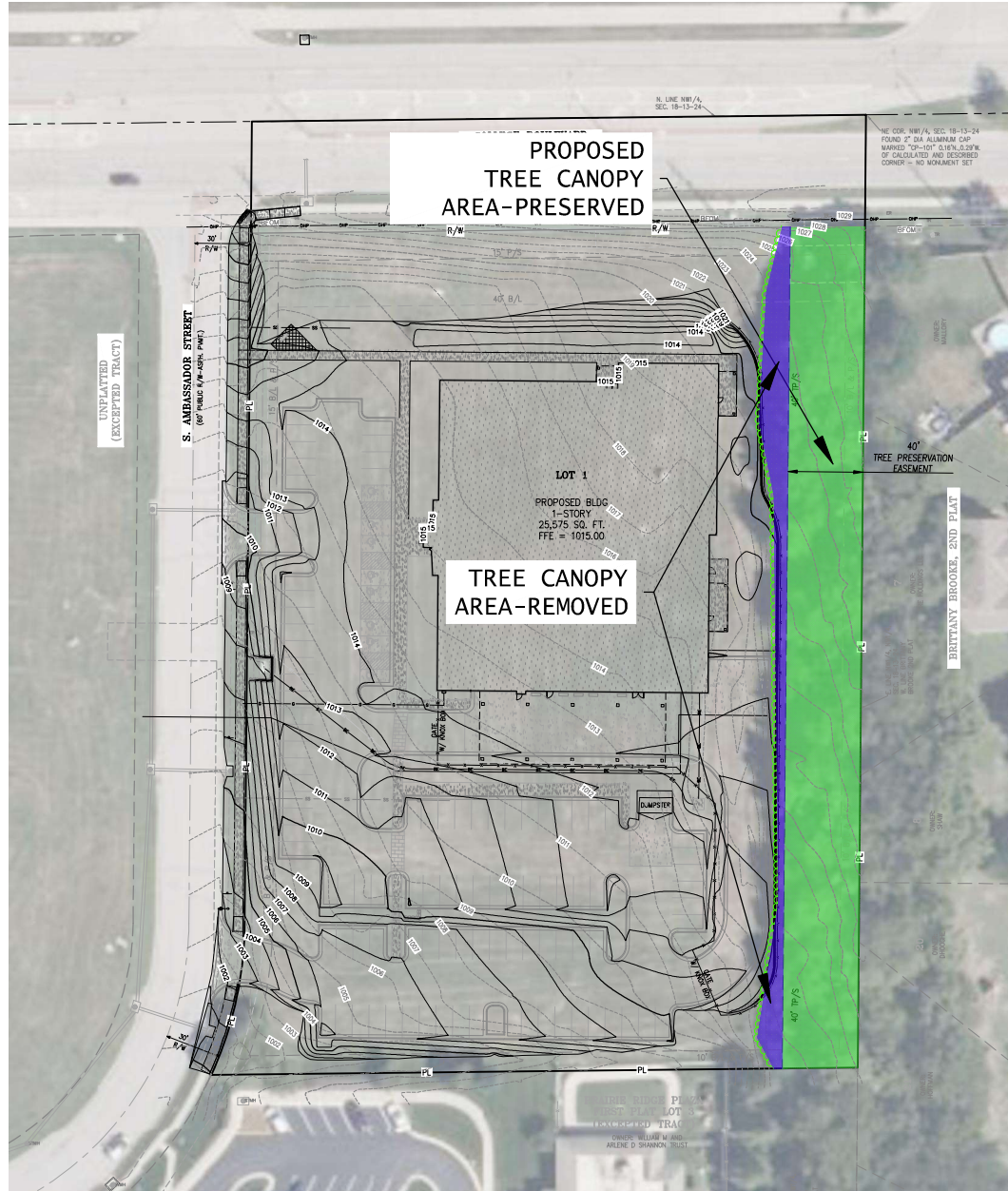
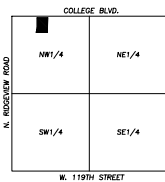


\\phelps-engineering\projects\18-13-24\Tree Canopy Exhibit.dwg User: jf44 Date: 2/20/2024 11:54:41 AM



TREE PRESERVATION SUMMARY	
AREA OF TREE CANOPY	0.51 ACRES
30% OF TREE CANOPY AREA	0.15 ACRES
AREA OF TREES PRESERVED	0.42 ACRES
PERCENT OF TREES PRESERVED	82.35%



ENGINEER/APPLICANT:  
PHELPS ENGINEERING, INC.  
1270 N. WINCHESTER  
OLATHE, KS 66061  
(913) 385-1155  
(913) 385-1166 FAX

PHELPS ENGINEERING, INC.  
1270 N. WINCHESTER  
OLATHE, KS 66061  
(913) 385-1155  
(913) 385-1166 FAX  
WWW.PHELPS-ENGINEERING.COM



**TREE CANOPY EXHIBIT**  
MIDLAND CARE - JOHNSON COUNTY PACE CENTER  
COLLEGE BLVD AND AMBASSADOR  
OLATHE, KANSAS

PROJECT NO.	25082	NO.	2	DATE	2-20-24	REVISIONS	BY	APP.
DATE OF APPROVAL	2-20-24	REVISIONS	1	DATE	2-20-24	REVISIONS	BY	APP.
DATE OF APPROVAL	2-20-24	REVISIONS	2	DATE	2-20-24	REVISIONS	BY	APP.
DATE OF APPROVAL	2-20-24	REVISIONS	3	DATE	2-20-24	REVISIONS	BY	APP.
DATE OF APPROVAL	2-20-24	REVISIONS	4	DATE	2-20-24	REVISIONS	BY	APP.
DATE OF APPROVAL	2-20-24	REVISIONS	5	DATE	2-20-24	REVISIONS	BY	APP.
DATE OF APPROVAL	2-20-24	REVISIONS	6	DATE	2-20-24	REVISIONS	BY	APP.
DATE OF APPROVAL	2-20-24	REVISIONS	7	DATE	2-20-24	REVISIONS	BY	APP.
DATE OF APPROVAL	2-20-24	REVISIONS	8	DATE	2-20-24	REVISIONS	BY	APP.
DATE OF APPROVAL	2-20-24	REVISIONS	9	DATE	2-20-24	REVISIONS	BY	APP.
DATE OF APPROVAL	2-20-24	REVISIONS	10	DATE	2-20-24	REVISIONS	BY	APP.

SHEET  
C4