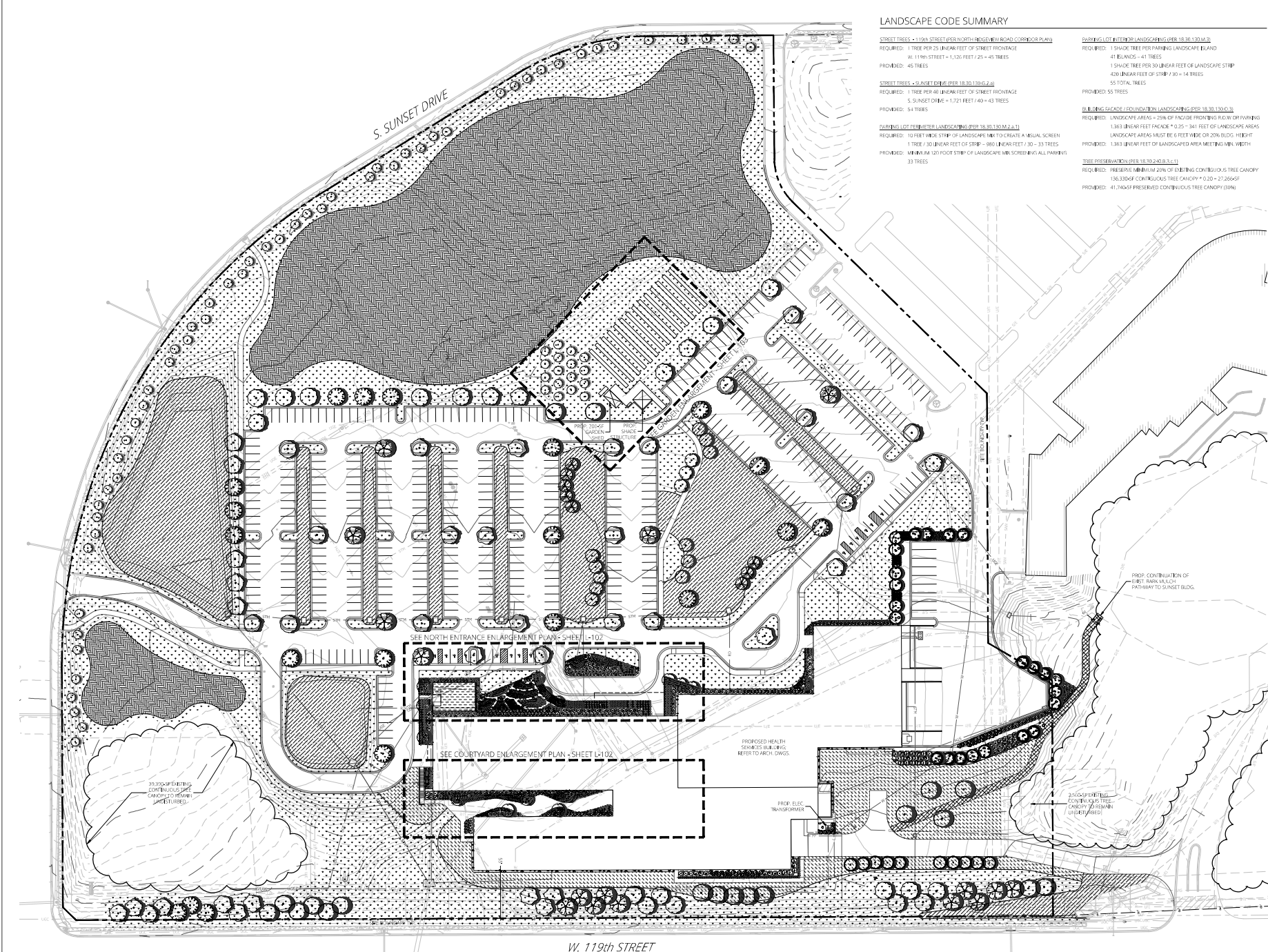


LANDSCAPE CODE SUMMARY

- STREET TREES - 119th STREET (SEE NORTH ENTRANCE ENLARGEMENT PLAN)**
 REQUIRED: 1 TREE PER 25 LINEAR FEET OF STREET FRONTAGE
 W. 119th STREET = 1,120 FEET x 25 = 45 TREES
 PROVIDED: 46 TREES
- STREET TREES - S SUNSET DRIVE (SEE NORTH ENTRANCE ENLARGEMENT PLAN)**
 REQUIRED: 1 TREE PER 30 LINEAR FEET OF STREET FRONTAGE
 S. SUNSET DRIVE = 1,721 FEET x 30 = 43 TREES
 PROVIDED: 54 TREES
- FRONT OF BUILDING LANDSCAPE (SEE NORTH ENTRANCE ENLARGEMENT PLAN)**
 REQUIRED: 10 FEET WIDE STRIP OF LANDSCAPE (10' x 300' x 2')
 1 TREE / 30 LINEAR FEET OF STRIP = 880 LINEAR FEET / 30 = 33 TREES
 PROVIDED: MINIMUM 120 FOOT STRIP OF LANDSCAPE (10' x 120' x 2') ALL PARKING
 33 TREES

- LANDSCAPE BLINDS**
 REQUIRED: 1 SHrub TREE PER PARKING LANDSCAPE BLIND
 41 BLINDS = 41 TREES
 1 SHrub TREE PER 30 LINEAR FEET OF LANDSCAPE STRIP
 400 LINEAR FEET OF STRIP / 30 = 14 TREES
 55 TOTAL TREES
 PROVIDED: 55 TREES
- PAVING CANOPY / FOUNDATION LANDSCAPING (SEE NORTH ENTRANCE ENLARGEMENT PLAN)**
 REQUIRED: LANDSCAPE AREAS = 25% OF PAVING FRONTAGE OR PARKING
 1.86 LINEAR FEET PACKED * 325 = 341 FEET OF LANDSCAPE AREAS
 LANDSCAPE AREAS MUST BE 6 FEET WIDE OR 20% BLDG. HEIGHT
 PROVIDED: 1.86 LINEAR FEET OF LANDSCAPE AREA MEETING MIN. WIDTH
- PROP. PRESERVE CONTIGUOUS TREE CANOPY**
 REQUIRED: PRESERVE CONTIGUOUS TREE CANOPY OR 25% OF EXISTING CONTIGUOUS TREE CANOPY
 136.33' OF CONTIGUOUS TREE CANOPY * 0.25 = 34.08' OF
 PROVIDED: 41,764 SF PRESERVED CONTIGUOUS TREE CANOPY (50%)



No.	Date	Description
1	10/22/24	City Council

REGISTRATION

PROJECT TEAM

- ARCHITECT: FINGLE-WILLIAMS ARCHITECTURE
- ARCHITECTURAL CONSULTANT: PERKINS+WILL ARCHITECTURE
- INTERIOR CONSULTANT: LOM DESIGN GROUP
- CIVIL: BHC CIVIL ENGINEERING
- LANDSCAPE: LANDWORKS
- STRUCTURAL: BBE STRUCTURAL ENGINEERS
- MECHANICAL ELECTRICAL PLUMBING: HENDERSON ENGINEERING
- FIRE PROTECTION: AV
- CONTRACTOR: McCOWN GORDON

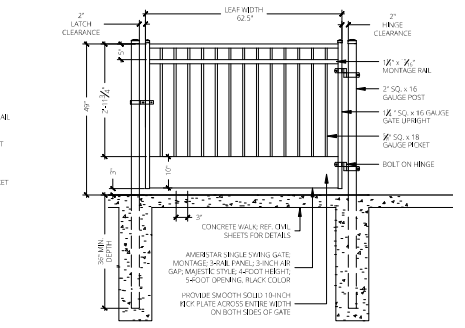
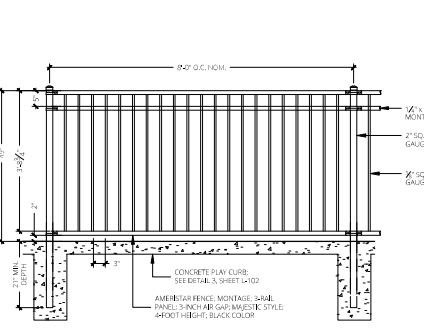
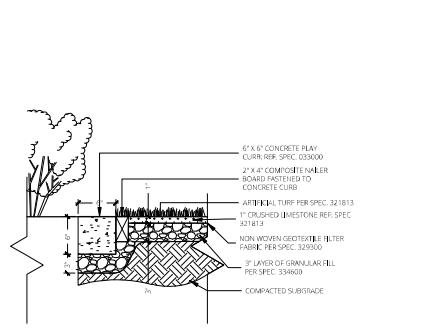
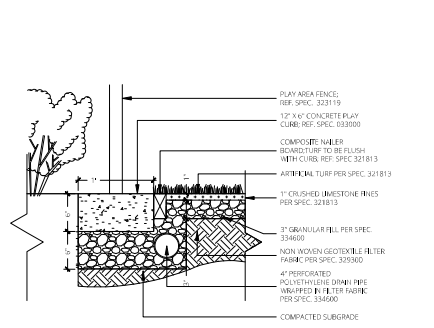
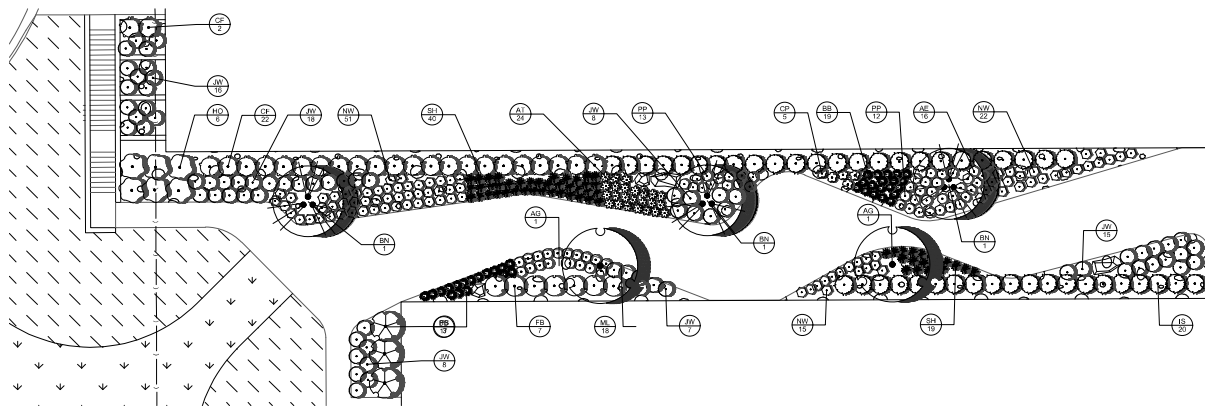
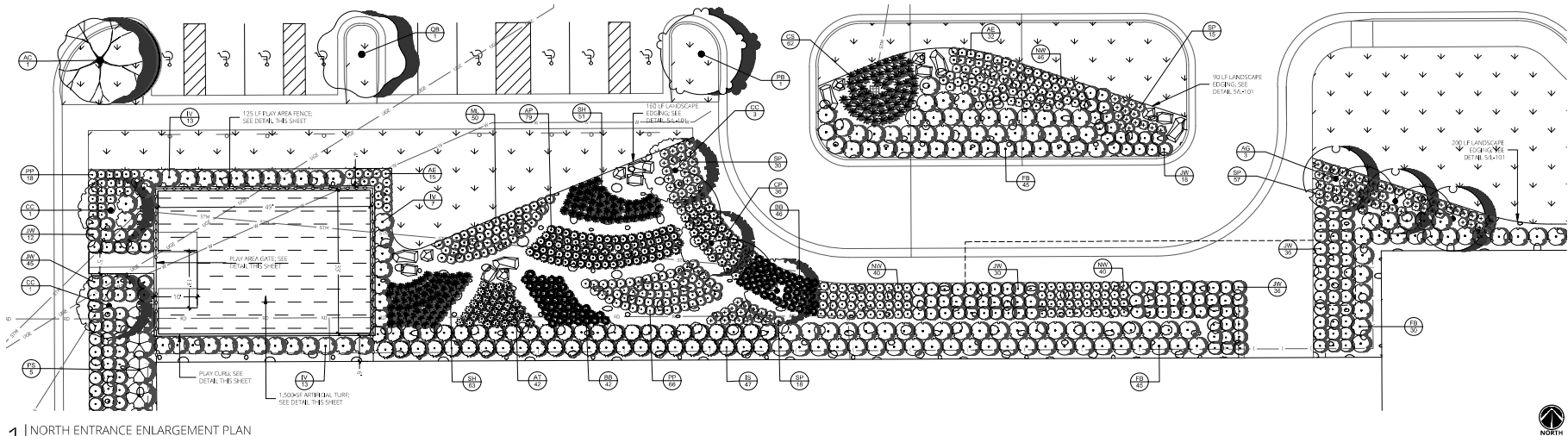
landworks
 STUDIO
 108 S. CHERRY ST., 2ND FLOOR
 OLAHIE, KANSAS 66061
 913.780.6707
www.landworksstudio.com

SHEET TITLE

Landscape Plan

SHEET NUMBER

L-100



1 NORTH ENTRANCE ENLARGEMENT PLAN
SCALE = 1" = 10'-0"

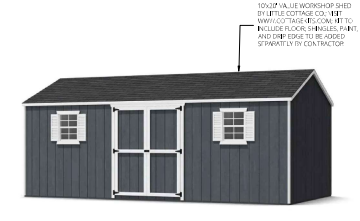
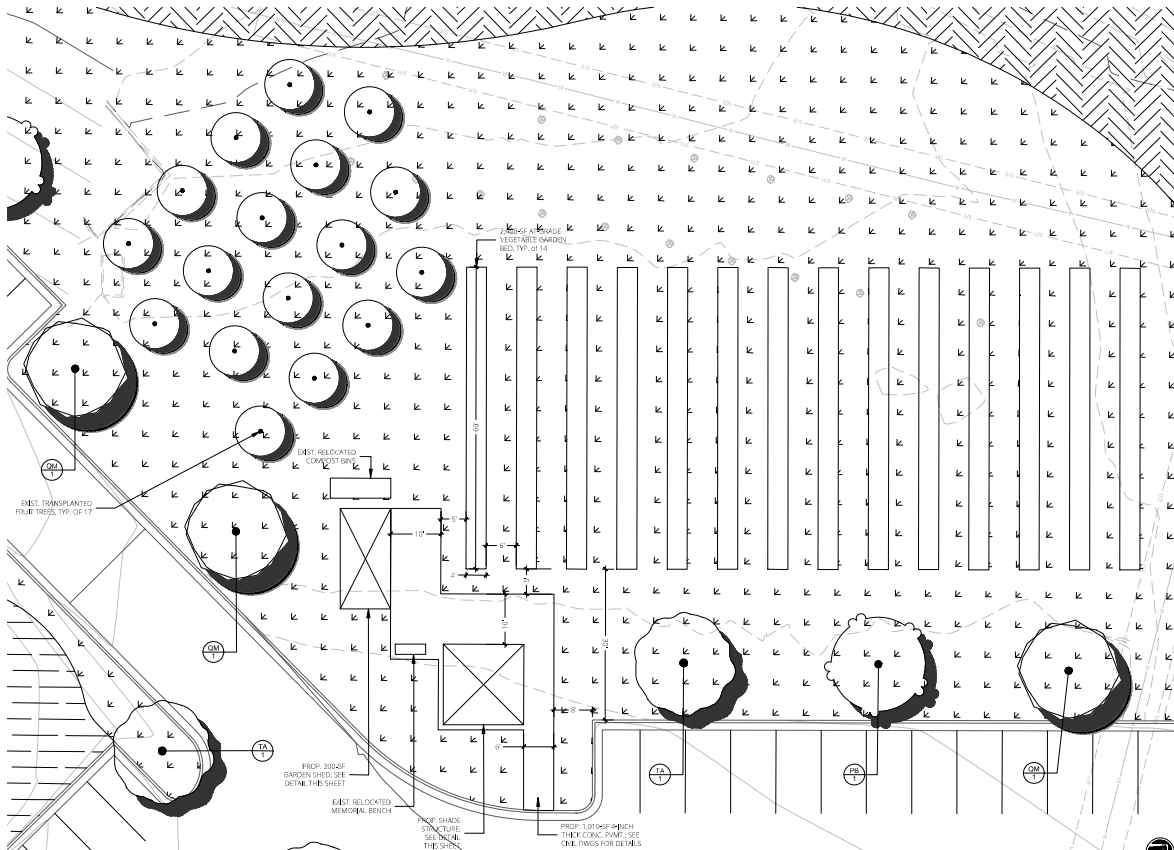
2 COURTYARD ENTRANCE ENLARGEMENT PLAN
SCALE = 1" = 10'-0"

3 ARTIFICIAL TURF AND FENCE
SCALE = 1-1/2" = 1'-0"

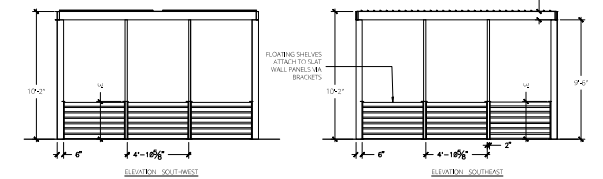
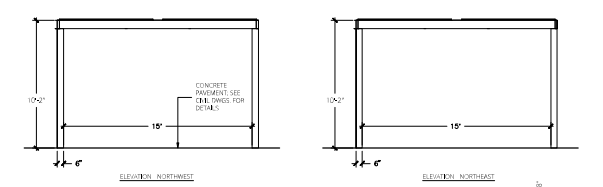
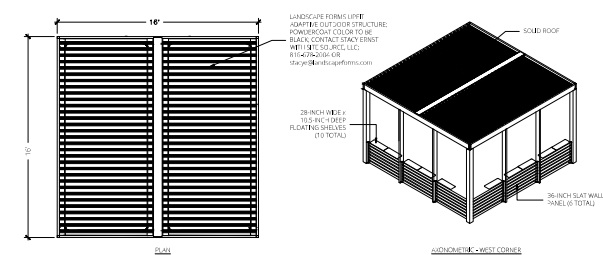
4 ARTIFICIAL TURF AND PLAY CURB
SCALE = 1-1/2" = 1'-0"

5 PLAY AREA FENCE
SCALE = 3/4" = 1'-0"

6 PLAY AREA GATE
SCALE = 3/4" = 1'-0"



2 GARDEN SHED
SCALE = NOT TO SCALE



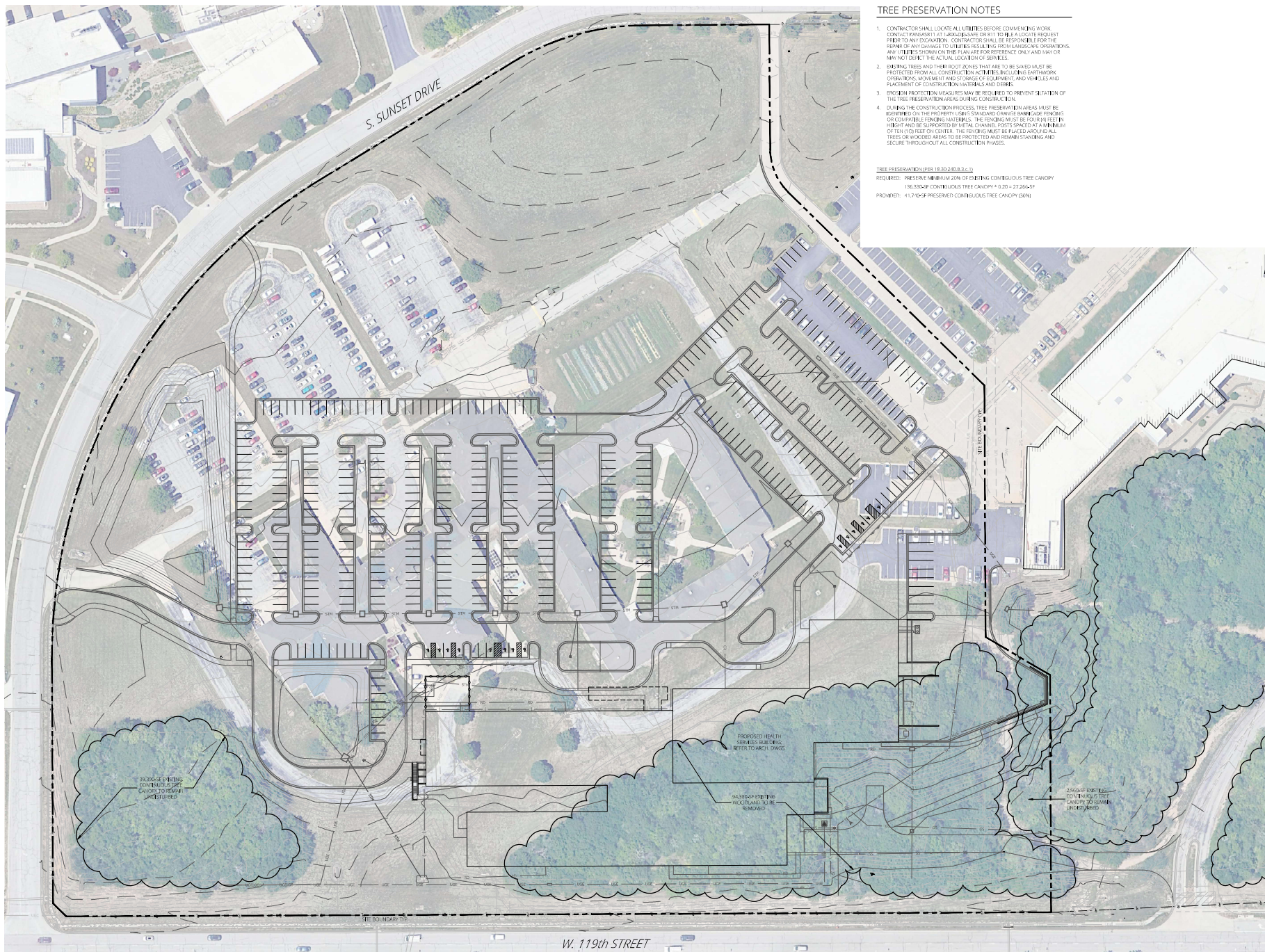
NOTES
1. ALL STRUCTURAL MEMBERS TO BE FABRICATED FROM EXTRUDED STRUCTURAL ALUMINUM FINISH
2. ALL FASTENERS INCLUDING METAL AND WOODEN SCREWS TO BE SUPPLIED BY MANUFACTURER
3. CONCRETE SHALL BE 3000 PSI (30 MPA) AND SHALL BE 2" MIN. THICK. SHALL BE CAST AND CURED ACCORDING TO THE MANUFACTURER'S INSTRUCTIONS. SHALL BE FINISHED BY ARCHITECT PRIOR TO INSTALLATION.
4. BRACKETS FOR SHED STRUCTURE TO BE MANUFACTURED BY CONTRACTOR TO PROTECT CONCRETE FROM PEEL AWAY AND FOOTINGS PER MANUFACTURER'S ENGINEERED DRAWINGS.

3 SHADE STRUCTURE
SCALE = 1/4" = 1'-0"

No.	Date	Description
1	11/22/24	City Comments

REGISTRATION

- PROJECT TEAM
- ARCHITECT FINLEY-WILLIAMS ARCHITECTURE
ARCHITECTURAL CONSULTANT PENNINGWELL ARCHITECTURE
HATCH CONSULTANT LDM DESIGN GROUP
CIVIL BHC CIVIL ENGINEERING
LANDSCAPE LANDWORKS
STRUCTURAL BSE STRUCTURAL ENGINEERS
MECHANICAL ENGINEERING HENDERSON ENGINEERING
ELECTRICAL ENGINEERING HENDERSON ENGINEERING
PLUMBING ENGINEERING HENDERSON ENGINEERING
FIRE PROTECTION AV FIRE PROTECTION AV
CONTRACTOR McCOWN GORDON



TREE PRESERVATION NOTES

- CONTRACTOR SHALL LOCATE ALL UTILITIES BEFORE COMMENCING WORK. CONDUCT KANSAS 111 AT HIREDATE OR 811 TO FILE A LOCATE REQUEST PRIOR TO ANY EXCAVATION. CONTRACTOR SHALL BE RESPONSIBLE FOR THE REPAIR OF ANY DAMAGE TO UTILITIES RESULTING FROM LANDSCAPE OPERATIONS. ANY UTILITIES SHOWN ON THE PLAN ARE FOR REFERENCE ONLY AND MAY VARY FROM ACTUAL UTILITIES. THE ACTUAL LOCATION OF SERVICES.
- EXISTING TREES AND THEIR ROOT ZONES THAT ARE TO BE SAVED MUST BE PROTECTED FROM ALL CONSTRUCTION ACTIVITIES INCLUDING EARTHWORK OPERATIONS, MOVEMENT AND STORAGE OF EQUIPMENT, AND VEHICLES AND PLACEMENT OF CONSTRUCTION MATERIALS AND DEBRIS.
- EROSION PROTECTION MEASURES MAY BE REQUIRED TO PREVENT EROSION OF THE TREE PRESERVATION AREAS DURING CONSTRUCTION.
- DURING THE CONSTRUCTION PROCESS, TREE PRESERVATION AREAS MUST BE BOUNDARIED ON THE PROPERTY USING STAINLESS STEEL BARRIERS, FENCING OR COMPATIBLE FENCING MATERIALS. THE FENCING MUST BE FOUR FEET IN HEIGHT AND BE SUPPORTED BY METAL CHANNEL POSTS SPACED AT A MINIMUM OF TEN (10) FEET ON CENTER. THE BARRIERS MUST BE PLACED AROUND ALL TREES OR WOODED AREAS TO BE PROTECTED AND REMAIN STANDING AND SECURE THROUGHOUT ALL CONSTRUCTION PHASES.

TREE PRESERVATION (PER 18.30.240 B.3-1)
 REQUIRED: PRESERVE MINIMUM 20% OF EXISTING CONTIGUOUS TREE CANOPY
 138,330 SF CONTIGUOUS TREE CANOPY * 0.20 = 27,666 SF
 PROVIDED: 41,702 SF PRESERVED CONTIGUOUS TREE CANOPY (30%)

1 | TREE PRESERVATION PLAN
 SCALE = 1" = 40'



Health Services Building

11875 S SUNSET DR #300
 OLATHE, KS 68061

Project No: 2405
 Date: 10.25.24
 Issued For: Prelim. Dev. Plan

No.	Date	Description
1	10/25/24	City Comments

REGISTRATION



PROJECT TEAM

- ARCHITECT: FINLEY WELLS ARCHITECTURE
- ARCHITECTURAL CONSULTANT: FERNANDEZ WILL ARCHITECTURE
- KITCHEN CONSULTANT: LGM DESIGN GROUP
- CIVIL: BHC CIVIL ENGINEERING
- LANDSCAPE: LANDWORKS
- STRUCTURAL: BSE STRUCTURAL ENGINEERS
- MECHANICAL/ELECTRICAL/PLUMBING/FIRE PROTECTION: HENDERSON ENGINEERING
- CONTRACTOR: McCOWN GORDON



103 S. CHERRY ST., 2ND FLOOR
 OLATHE, KANSAS 68061
 913.780.6707
 www.landworksstudio.com

SHEET TITLE
 Tree Preservation Plan

SHEET NUMBER
 L-200