

PLANT SCHEDULE

EVERGREEN TREES



1

EVERGREEN SHRUBS



136

ORNAMENTAL DECIDUOUS



11

UPRIGHT EVERGREEN SCREENING SHRUBS



9

STREET TREES



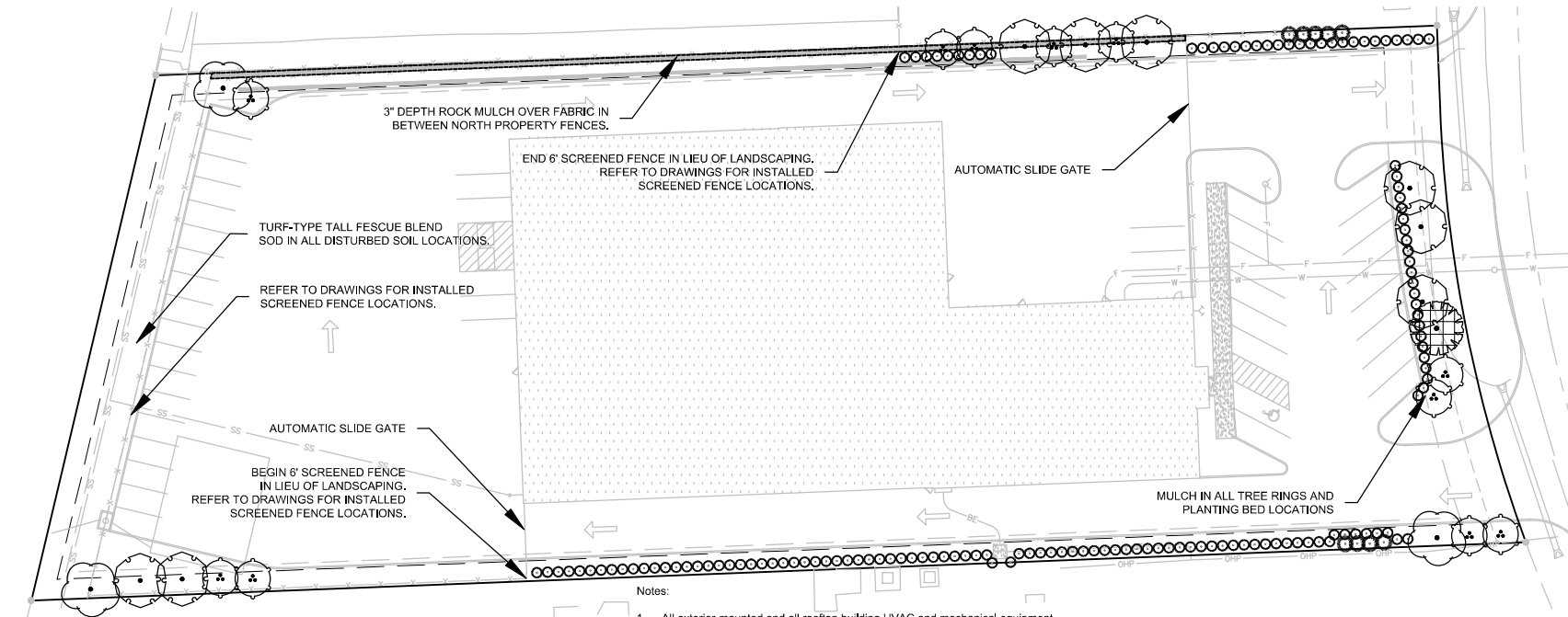
6



3

Buffer Details												Constructed Features§
PROPERTY LINE PORTION	DESCRIPTION	Length	Proposed Zoning	Adjoining Zoning	Buffer Type	Min. Buffer Width (in feet)	Deciduous Shade Trees	Ornamental Trees	Evergreen Trees	Shrubs and Ornamental Grasses		
A – Primary St.	East Facing S. Keeler Terr.	165.24	M–2	STREET	Refer to Parking & Vehicle Screen Requirements & Nonresidential Landscape Area Frontage Requirement							
B	South facing	554.11	M–2	M–2	1	6*	6	6	6	111	6' Ht. Fence per Civil Dws in lieu of plantings.	
C	West facing railroad	200.08	M–2	M–2	1	10	3	3	3	41	6' Ht. Fence per Civil Dws in lieu of plantings.	
D	North Facing	474.95	M–2	M–2	1	10	5	5	5	95	6' Ht. Fence per Civil Dws in lieu of plantings.	
					TOTAL		14	14	14	247		
* Reduction in Required Buffer due to existing buffer on abutting property per 180.30.130.J.2						§ A double row of evergreen trees may be substituted for a screening wall, but may not be counted toward minimum requirements for plants.						

18.30.130.3L Nonresidential Landscape Area Frontage Requirements								
Street Name	Road Type	Use	Use Across Street	Res / Nonres across Str.?	Frontage Length	Minimum Buffer Width	Shade Trees Required	Ornamental Trees Req.
S. Keeler Terrace		M-2	M-2	Nonresidential Use	165.24	10	4	2



Notes:

- All exterior-mounted and all rooftop building HVAC and mechanical equipment, vents, piping, roof access ladders, and utility meters must be located out of view or otherwise screened from public view from all adjacent streets. Screening must be accomplished with landscaping, screen walls, building elements, or a combination of these methods.
- Exterior ground-mounted or building-mounted equipment including, but not limited to, mechanical equipment, utilities' meter banks and coolers must be screened from public view with three (3) sided landscaping or with an architectural treatment compatible with the building architecture.
- Fences shall be constructed up to a maximum height of 8 feet to fully screen large equipment and stored materials. Privacy slats shall be fully opaque and shall not allow visibility through the fence to meet screening requirements.



Know what's below.
Call before you dig.

UTILITY NOTES:
VISUAL INDICATIONS OF UTILITIES ARE AS SHOWN.
UNDERGROUND LOCATIONS SHOWN, AS FURNISHED BY
THEIR LESSORS, ARE APPROXIMATE AND SHOULD BE
VERIFIED IN THE FIELD AT THE TIME OF
CONSTRUCTION. FOR ACTUAL FIELD LOCATIONS OF
UNDERGROUND UTILITIES CALL 811.



SCALE: 1"=20'
0' 20' 40'

PHILIP B. BUCHHEIT, INC.
www.PBBI.com
15680 KEELER TERRACE
OLATHE, MO 64773
913.251.1100
www.philipbuchheit.com



LANDSCAPE PLAN
EARTH CONTACT PRODUCTS
15680 KEELER TERRACE
OLATHE, JOHNSON COUNTY, KANSAS

PROJECT NO.	DATE	BY	CHK
15680-KEELER	07-27-2020	SS	SS
REVISION	DATE	BY	CHK
1	08-27-2020	SS	SS
2	09-01-2020	SS	SS
3	09-01-2020	SS	SS
4	09-01-2020	SS	SS
5	09-01-2020	SS	SS
6	09-01-2020	SS	SS
7	09-01-2020	SS	SS
8	09-01-2020	SS	SS
9	09-01-2020	SS	SS
10	09-01-2020	SS	SS

SHEET
L100