

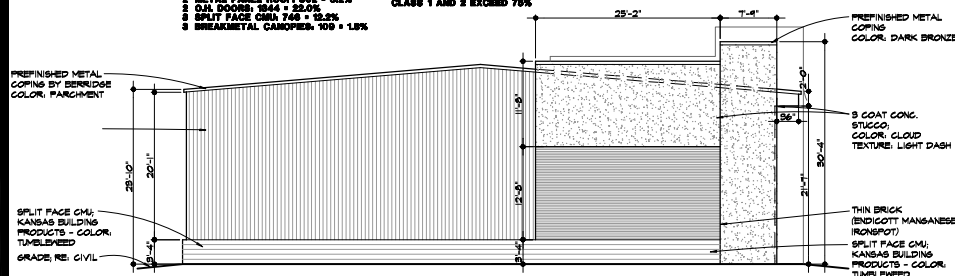
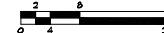
Building A - Phase 1 - South (Primary Facade)
Material Category 1, 2 & 3 for 75% of facade
Min. 15% Glass

8100 TOTAL
1 STONEFRONT, 874 = 0.1%
1 GLASS O.H. DOORS, 899 = 10.7%
1 3 COAT STUCCO, 1882 = 18.6%
1 THIN BRICK VENEER, 1000 = 10.0%
1 METAL PANEL, ROOF, 501 = 0.5%
1 O.H. DOORS, 1544 = 25.0%
1 SPLIT FACE CMU, 748 = 15.2%
1 BREAKMETAL CANOPIES, 100 = 1.5%

CLASS 1 = 29.3
CLASS 2 = 48.7
CLASS 3 = 14.0
CLASS 1 AND 2 EXCEED 75%

BUILDING 'A' SOUTH ELEVATION

SCALE // 1/8" = 1'-0"



BUILDING 'A' WEST ELEVATION

SCALE // 1/8" = 1'-0"

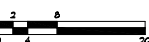
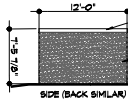
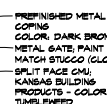
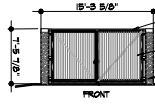


Building A - Phase 1 - West (Secondary Facade)
Material Category 1, 2 & 3 for 40% of facade

2217 TOTAL
1 STONEFRONT, 0 = 0%
1 GLASS O.H. DOORS, 0 = 0%
1 3 COAT STUCCO, 548 = 24.6%
1 THIN BRICK VENEER, 881 = 39.6%
1 METAL PANEL, ROOF, 0 = 0%
1 O.H. DOORS, 0 = 0%
1 SPLIT FACE CMU, 519 = 23.5%
1 BREAKMETAL CANOPIES, 7 = 0.3%
1 METAL WALL PANEL, 1082 = 48.6%

TRASH ENCLOSURE

SCALE // 1/8" = 1'-0"



NOTE:

- ALL BUILDINGS MOUNTED AND ROOFTOP BUILDINGS HVAC AND MECHANICAL EQUIPMENT, VENTS, PIPING, ROOF ACCESS LADDERS, AND UTILITY METERS MUST BE LOCATED OUT OF VIEW OR OTHERWISE SCREENED FROM PUBLIC VIEW.
- EXTERIOR GROUND-MOUNTED OR BUILDING-MOUNTED EQUIPMENT INCLUDING BUT NOT LIMITED TO MECHANICAL EQUIPMENT, UTILITIES METER BANKS AND COOLERS MUST BE SCREENED FROM PUBLIC VIEW WITH THREE-SIDED LANDSCAPING OR WITH AN ARCHITECTURAL TREATMENT COMPATIBLE WITH THE BUILDING ARCHITECTURE.
- BUILDING DESIGN NARRATIVE:
- THE MAIN ENTRY OF THE BUILDING IS A SPLIT FACE CMU THAT IS TALLER THAN ALL THE OTHER PORTIONS OF THE BUILDING. THE PLASTER OF THE FACADE FACING SOUTHWARD PROJECT 4" FROM THE MAIN LINE OF THE FACADE.
- THE SOUTH FACADE IS THE PRIMARY FACADE. GARAGE AND OVERHEAD DOORS ON THIS FACADE HAVE A CANOPY OF THE EXISTING ROOF CANTILEVERING OUT FROM THE MAIN ROOF LINE. THIS PROJECTION WILL BE 3" DEEP. THE OVERHEAD DOOR OPENINGS WILL BE TRIMMED OUT WITH PAINTED METAL.
- GLAZING ON THE SOUTH FACADE CONSISTS OF DARK BRONZE STOREFRONT WITH INSULATED GLAZING AT THE ENTRY FEATURE. THE REMAINDER OF THE GLAZING REQUIREMENT IS MET BY FOUR OVERHEAD DOORS WITH GLAZING PANELS. THE TOTAL GLAZING EXCEEDS 20% OF THE FACADE.
- THE BUILDING STRUCTURE WILL LAY OUT TO PROVIDE BAYS OF LESS THAN 80' IN WIDTH. EACH BAY IS DIFFERENTIATED WITH VERTICAL ARTICULATION AND CHANGES IN ROOFLINE.
- TRANSITIONS BETWEEN ROOFS ARE PROVIDED AT BAY TRANSITIONS.
- ON THE SOUTH (PRIMARY FACADE), CLASS 1 AND CLASS 2 MATERIALS MAKE UP OVER 80% OF THE FACADE. NO CLASS 4 MATERIALS ARE USED ON THIS FACADE.
- ON THE EAST AND WEST FACADES, CLASS 1, 2 AND 3 MATERIALS MAKE UP OVER 80%.
- THE ROOF IS MADE OF STANDING SEAM METAL ROOF WHICH IS A CLASS 1 MATERIAL.

BUILDING 'A' EAST ELEVATION

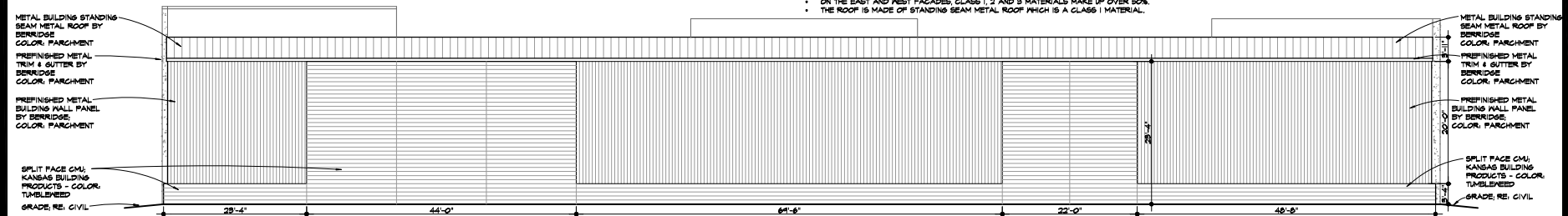
SCALE // 1/8" = 1'-0"



Building A - Phase 1 - East (Secondary Facade)
Material Category 1, 2 & 3 for 40% of facade

8206 TOTAL
1 STONEFRONT, 48 = 0.5%
1 GLASS O.H. DOORS, 0 = 0%
1 3 COAT STUCCO, 828 = 27.5%
1 THIN BRICK VENEER, 280 = 10.4%
1 3 COAT STUCCO, 875 = 15.9%
1 BREAKMETAL CANOPIES, 0 = 0%
1 O.H. DOORS, 0 = 0%
1 METAL PANEL, ROOF, 0 = 0%
1 METAL WALL PANEL, 1117 = 48.6%

CLASS 1 = 14.0
CLASS 2 = 10.4
CLASS 3 = 37.1
CLASS 4 = 48.5



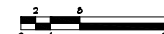
Building A - Phase 1 - North (Secondary Facade)
Material Category 1, 2 & 3 for 40% of facade

8534 TOTAL
1 STONEFRONT, 0 = 0%
1 GLASS O.H. DOORS, 0 = 0%
1 3 COAT STUCCO, 3090 = 58.7%
1 THIN BRICK VENEER, 0 = 0%
1 3 COAT STUCCO, 0 = 0%
1 O.H. DOORS, 0 = 0%
1 METAL PANEL, ROOF, 811 = 14.6%
1 METAL WALL PANEL, 2800 = 48.9%

CLASS 1 = 6.0
CLASS 2 = 14.6
CLASS 3 = 52.7
CLASS 4 = 48.9

BUILDING 'A' NORTH ELEVATION

SCALE // 1/8" = 1'-0"



NOT FOR CONSTRUCTION

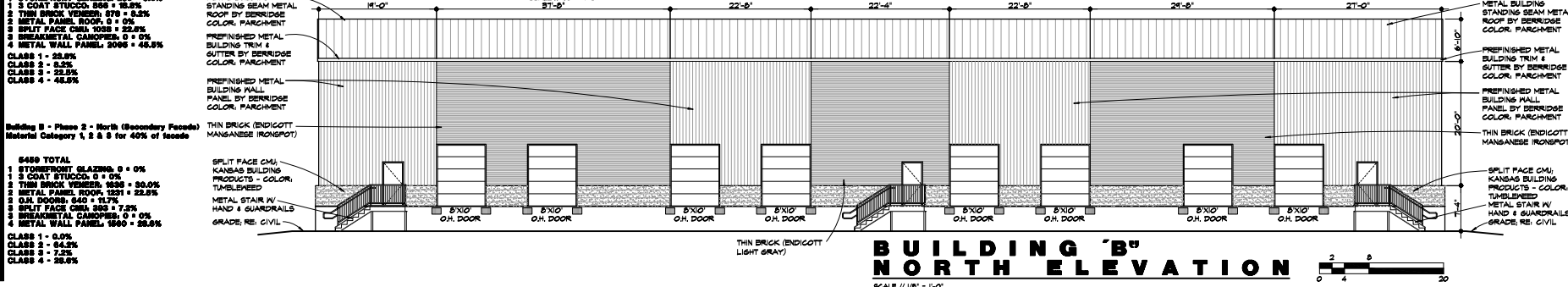
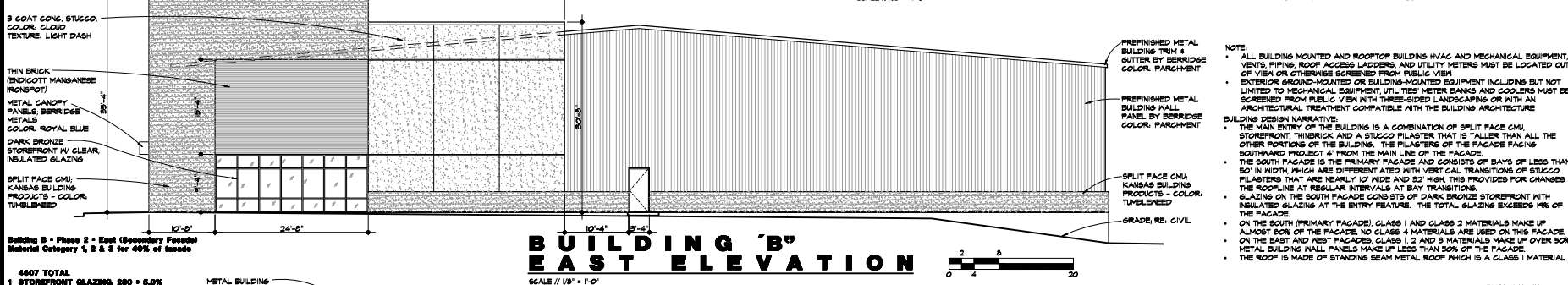
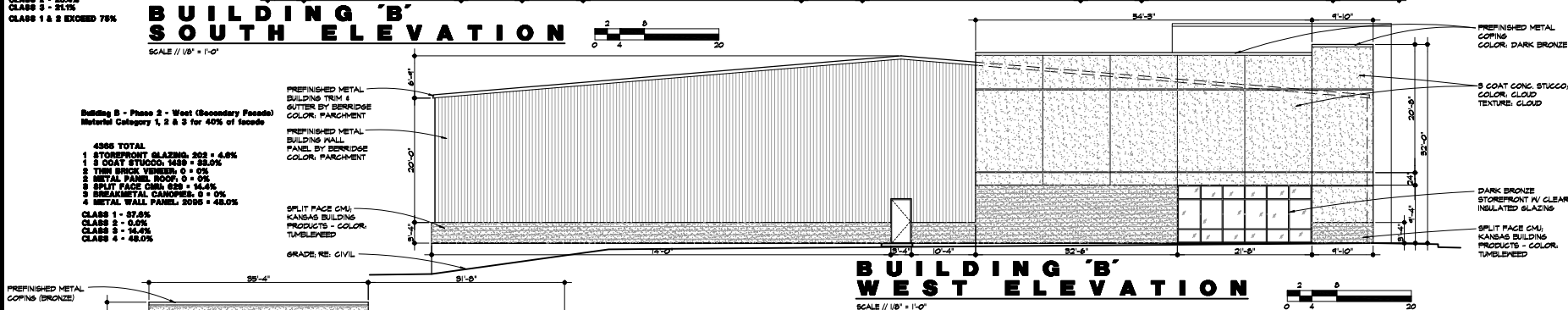
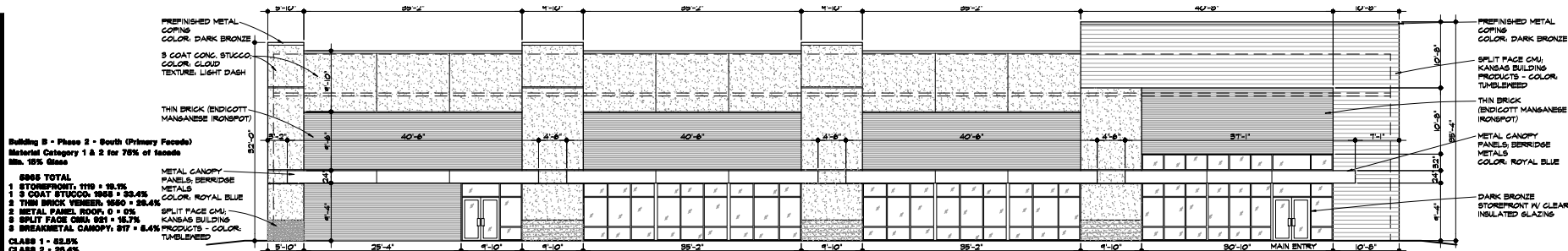
DATED: 11/15/2024
DRAWN BY: KASTER, BLANKENHOF
CHECKED BY: KASTER, BLANKENHOF
DESIGNED BY: KASTER, BLANKENHOF
PROJECT NO: 2024-001
7004 WEST 190TH STREET
OVERLAND PARK, KANSAS 66133
TELEPHONE: (816) 681-1800
FAX: (816) 681-1800
WWW.KASTERARCHITECTS.COM

KASTER ARCHITECTS INC
ARCHITECTURE · PLANNING · INTERIOR DESIGN

NATIONWIDE FREIGHT
NEW INDUSTRIAL BUILDING
20560 WEST 169TH STREET
OLATHE, KS

DATE: MAY 4, 2024
REVISION: NUMBER
A3.1
OP: NUMBER
KAI JOB NO. 24044A





NOTE:

- ALL BUILDING MOUNTED AND ROOFTOP BUILDING HVAC AND MECHANICAL EQUIPMENT, VENTS, PIPING, ROOF ACCESS LADDERS, AND UTILITY METERS MUST BE LOCATED OUT OF VIEW OR OTHERWISE SCREENED FROM PUBLIC VIEW.
- EXTERIOR GROUND-MOUNTED OR BUILDING-MOUNTED EQUIPMENT INCLUDING BUT NOT LIMITED TO MECHANICAL EQUIPMENT, UTILITIES METER BANKS AND COOLERS MUST BE SCREENED FROM PUBLIC VIEW WITH THREE-SIDED LANDSCAPING OR WITH AN ARCHITECTURAL TREATMENT COMPATIBLE WITH THE BUILDING ARCHITECTURE.

BUILDING DESIGN NARRATIVE:

THE MAIN ENTRY OF THE BUILDING IS A COMBINATION OF SPLIT FACE CMU, STONEFRONT, THINBRICK AND A STUCCO PLASTER THAT IS TALLER THAN ALL THE OTHER PORTIONS OF THE BUILDING. THE PLASTER OF THE FACADE FACING SOUTHWARD PROJECT 4' FROM THE MAIN LINE OF THE FACADE.

- THE SOUTH FACADE IS THE PRIMARY FACADE AND CONSISTS OF BAYS OF LESS THAN 50' IN WIDTH, WHICH ARE DIFFERENTIATED WITH VERTICAL TRANSITIONS OF STUCCO PLASTER THAT ARE NEARLY 10' INDE AND 32' HIGH. THIS PROVIDES FOR CHANGES IN THE ROOPLINE AT REGULAR INTERVALS AT BAY TRANSITIONS.
- GLAZING ON THE SOUTH FACADE CONSISTS OF DARK BRONZE STOREFRONT WITH INSULATED GLAZING AT THE ENTRY FEATURE. THE TOTAL GLAZING EXCEEDS 1/3 OF THE FACADE.
- ON THE SOUTH (PRIMARY FACADE), CLASS 1 AND CLASS 2 MATERIALS MAKE UP ALMOST 80% OF THE FACADE. NO CLASS 4 MATERIALS ARE USED ON THIS FACADE.
- ON THE EAST AND WEST FACADES, CLASS 1, 2 AND 3 MATERIALS MAKE UP OVER 50% METAL BUILDING WALL PANELS MAKE UP LESS THAN 30% OF THE FACADE.
- THE ROOF IS MADE OF STANDING SEAM METAL ROOF WHICH IS A CLASS 1 MATERIAL.

NOT FOR CONSTRUCTION

KASTER ARCHITECTS INC
ARCHITECTURE · PLANNING · INTERIOR DESIGN

**NATIONWIDE FREIGHT
NEW INDUSTRIAL BUILDING
20860 WEST 149TH STREET
OLATHE, KS**

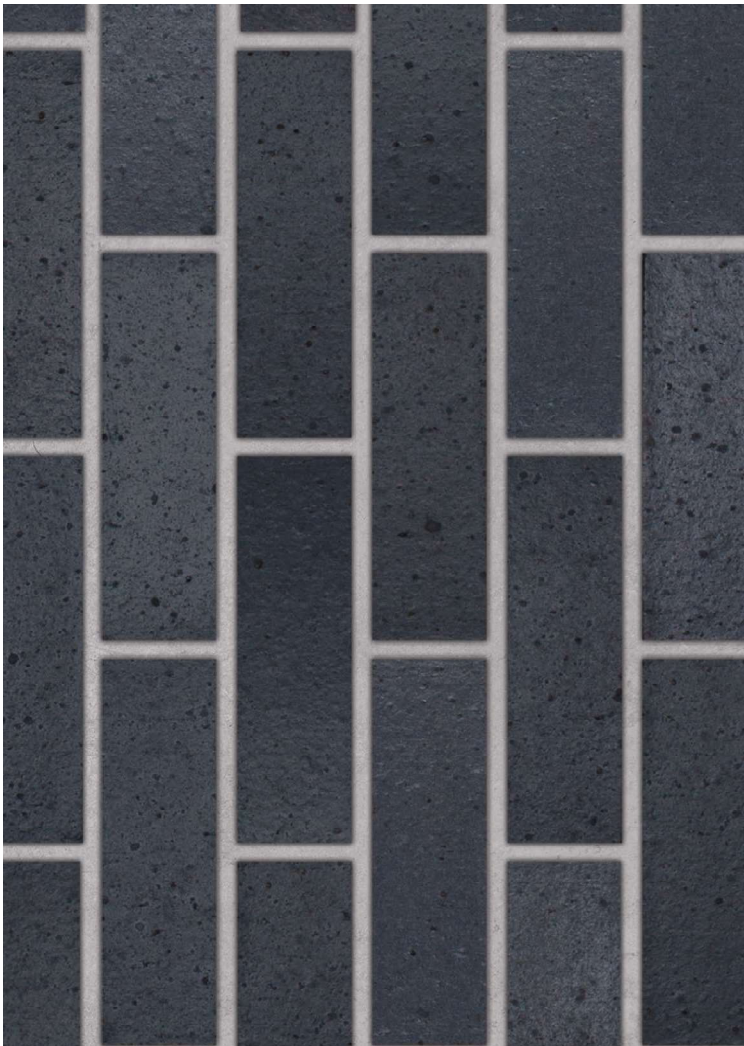
DATE: MAY 4, 2024
REVISION: NUMBER
A3.2
OF: REVISIONS
KAI JOB NO. 24044A

DAVID A. KASTER, LICENSED ARCHITECT
KASTER ARCHITECTS, INC.
20860 WEST 149TH STREET
OLATHE, MO 64085
TEL: 816-881-1800
WWW.KASTERARCHITECTS.COM

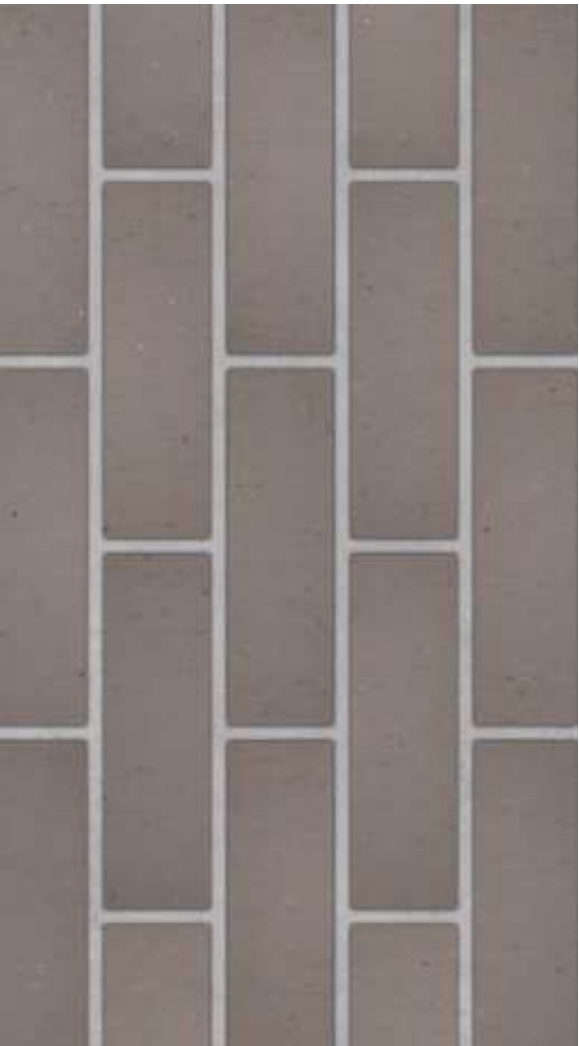


Chahal Industrial – Building Material Images

Thinbrick - Endicott Manganese Ironspot



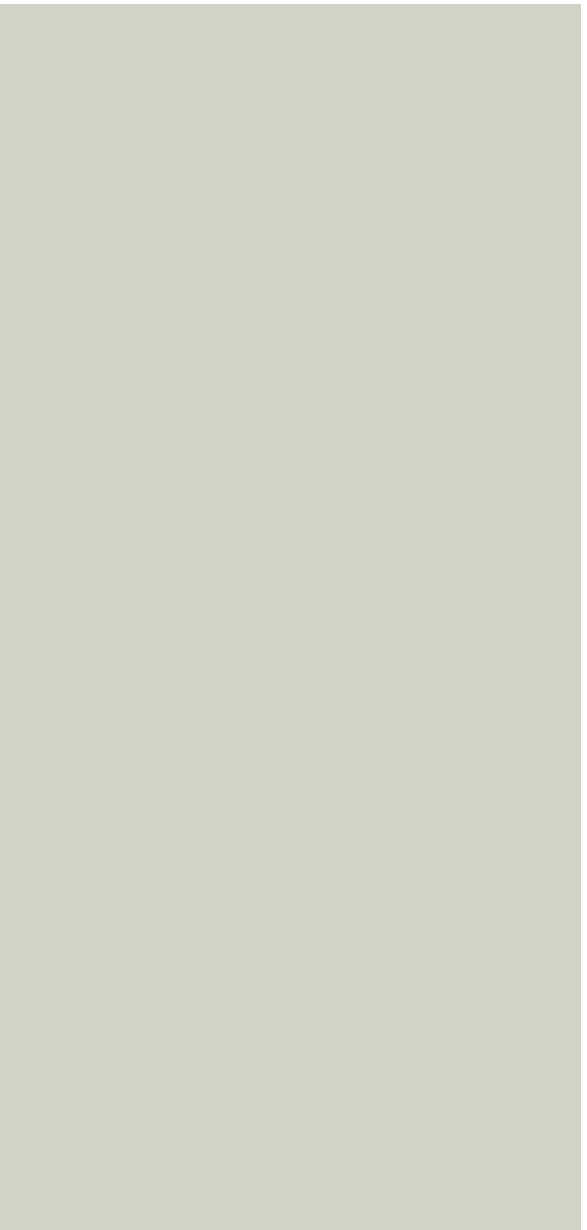
Thinbrick - Endicott Manganese Light Gray Blend



Splitface CMU – Kansas Building Products Tumbleweed



Metal Wall Panels, Standing Seam Roof and Building Trim & Gutter - Berridge Color Parchment



3 Part Conc. Stucco Omega Products

Color – Cloud



Texture – Light Dash



Dark Bronze Storefront



Metal Canopies – Berridge Royal Blue

