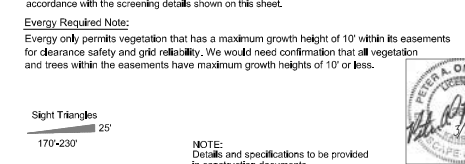
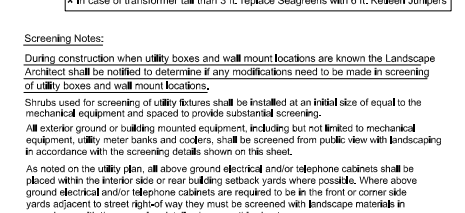
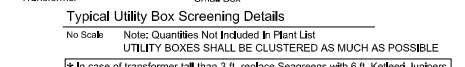
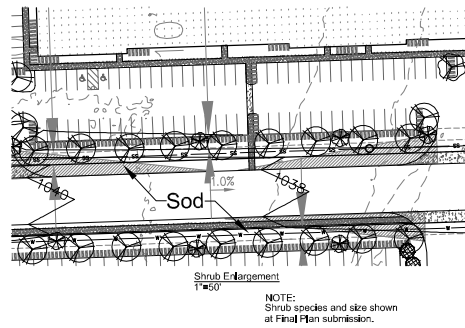
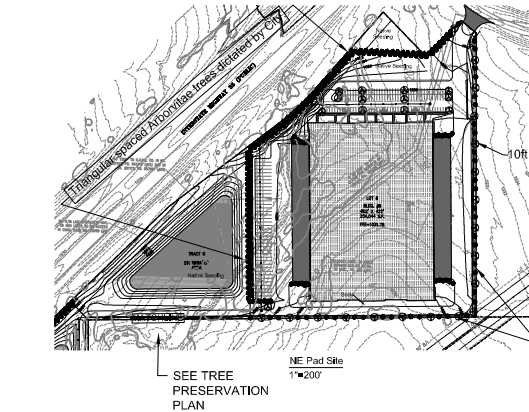
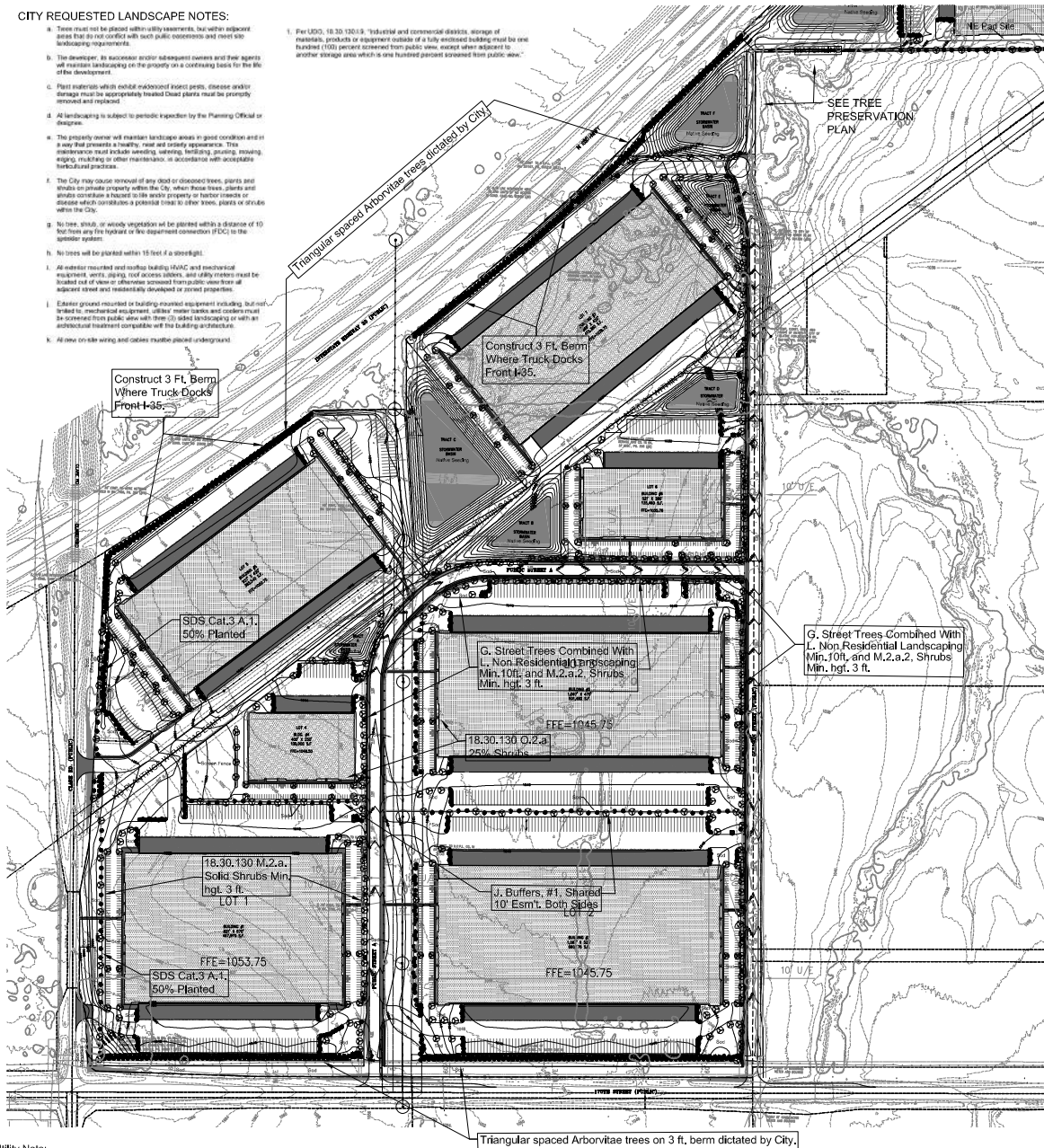


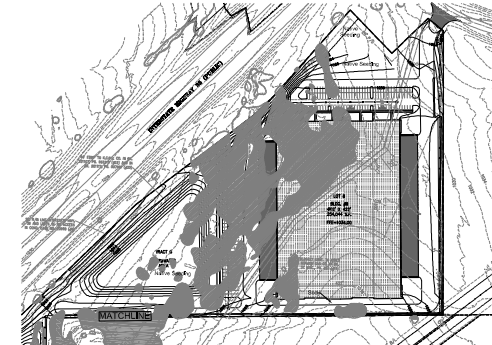
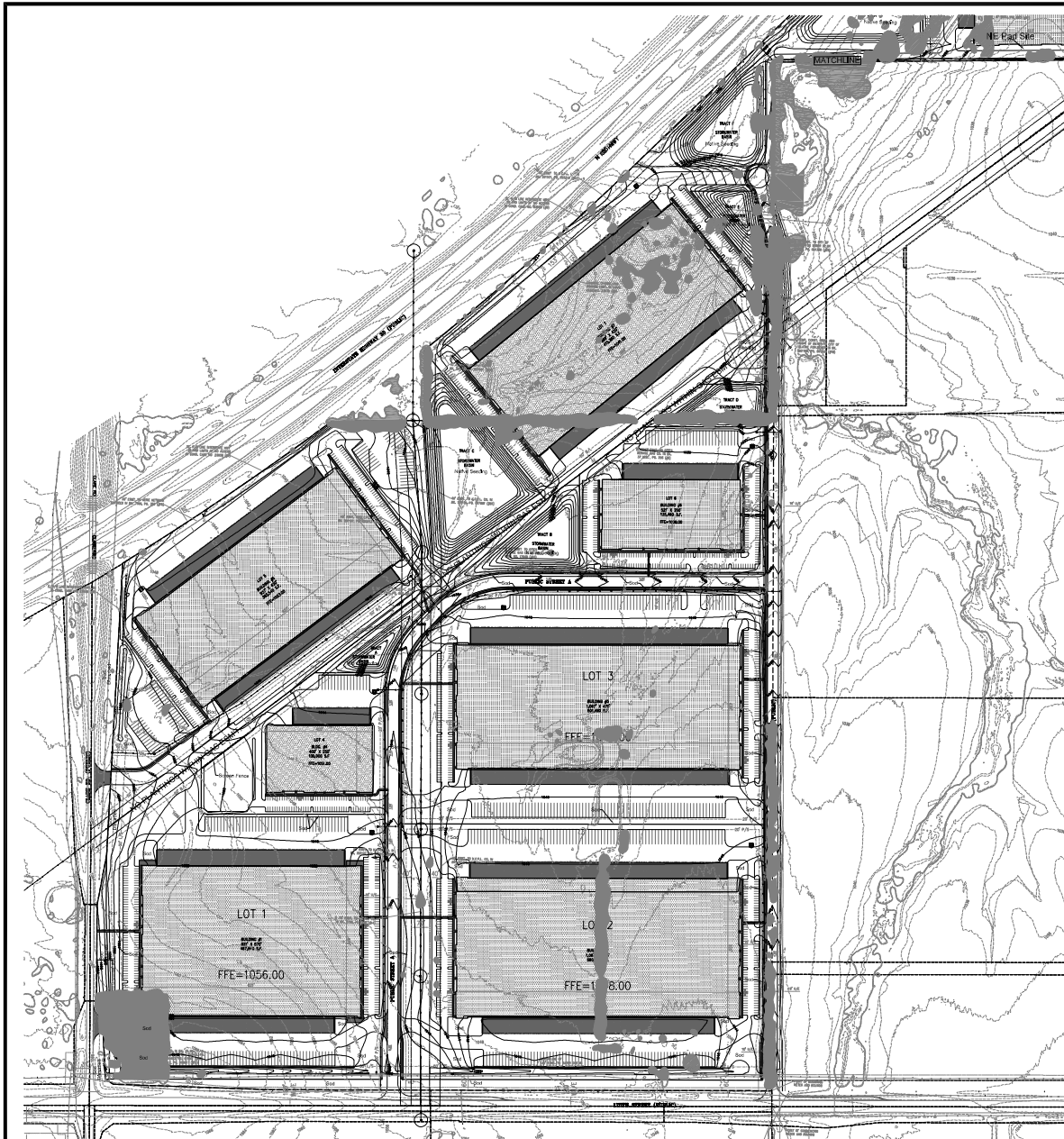
CITY REQUESTED LANDSCAPE NOTES:

1. Trees must not be placed within utility easements, but within adjacent areas that do not conflict with such public easements and meet site landscaping requirements.
2. The developer, its successor and/or subsequent owners and their agents will maintain landscaping on the property on a continuing basis for the life of the development.
3. Plant materials which exhibit noticeable insect pests, disease and/or damage must be appropriately treated. Dead plants must be promptly removed and replaced.
4. All landscaping is subject to periodic inspection by the Planning Official or Designer.
5. The property owner will maintain landscape areas in good condition and in a way that presents a healthy, neat and orderly appearance. This maintenance must include watering, weeding, fertilizing, pruning, mowing, edging, mulching or other maintenance, in accordance with acceptable horticultural practices.
6. The City may cause removal of any dead or diseased trees, plants and shrubs on private property within the City, when these trees, plants and shrubs constitute a hazard to the public safety or to other trees, plants or shrubs which constitute a potential hazard to other trees, plants or shrubs within the City.
7. No tree, shrub, or woody vegetation will be planted within a distance of 10 feet from any fire hydrant or fire department connection (FDC) to the water system.
8. No trees will be planted within 15 feet of a streetlight.
9. All exterior mounted and rooftop lighting (A/C and mechanical equipment, vents, piping, roof access ladders, and utility meters) must be located out of view or otherwise screened from public view from all adjacent street and reasonably developed or planned properties.
10. Exterior ground mounted or building-mounted equipment including, but not limited to, mechanical equipment, utility meter banks and coolers, must be screened from public view with three (3) sided landscaping or with an architectural treatment compatible with the building architecture.
11. All new on-site wiring and cables must be placed underground.

1. Per UDO, 18.30.130(1)9, "Industrial and commercial districts, storage of materials, products or equipment outside of a fully enclosed building must be one hundred (100) percent screened from public view, except when adjacent to another storage area which is one hundred percent screened from public view."



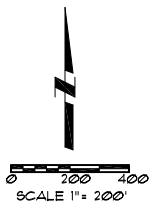
Utility Note:
Utilities shown on plan are diagrammatic and some may be missing. Before starting any construction call appropriate locating service. In Kansas call 1-800-4-A-SAFE (344-7233) to have utilities located.



NE Pad Site
1"=200'

Tree Preservation Legend

- Trees Removed 538,140 sf. 96.78%
- Onsite Trees Saved and Protected 17,913 sf. 3.22%



Tree Preservation Plan Intermodal Industrial

175th And Claire
Olathe, Kansas

LS-2



Oppermann LandDesign, LLC
Land Planning Landscape Architecture
59 Dumas Lane
New Windsor, New York 12553
peter@oppermans6@gmail.com
913.592.5598

Utility Note:
Utilities shown on plan are diagrammatic and some may be missing. Before starting any construction
call appropriate locating service. In Kansas call 1-800-4-A-SAFE (344-7233) to have utilities located.

03/04/2024