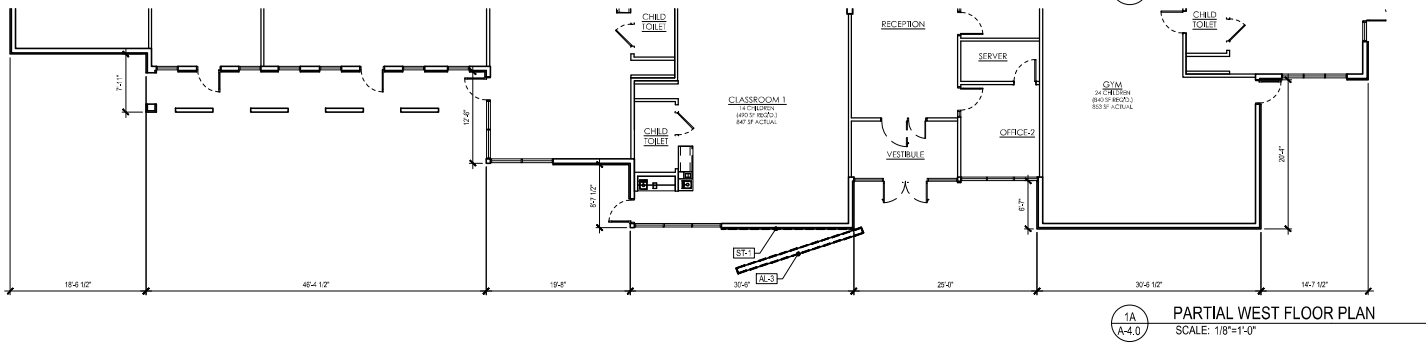
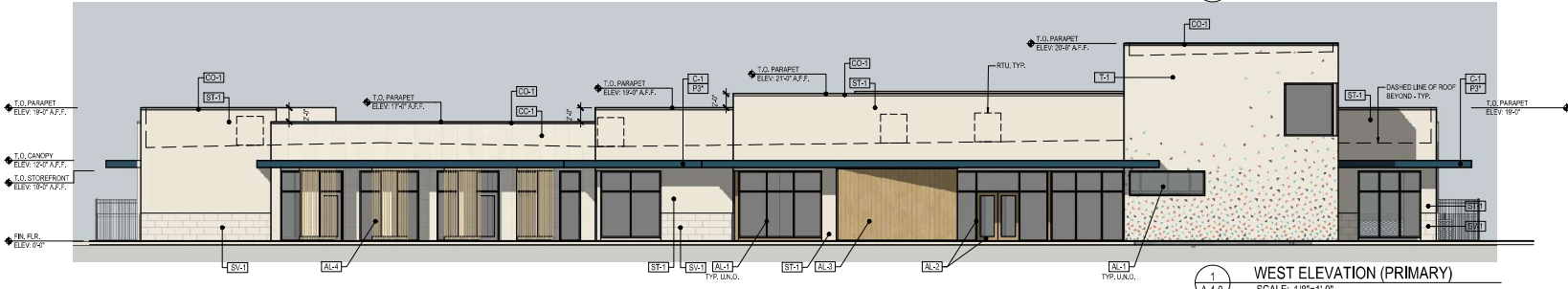
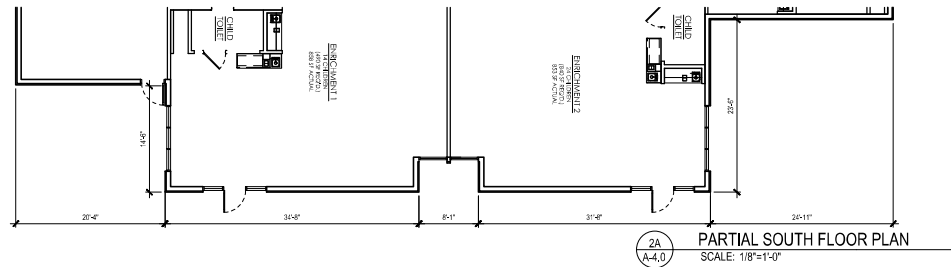
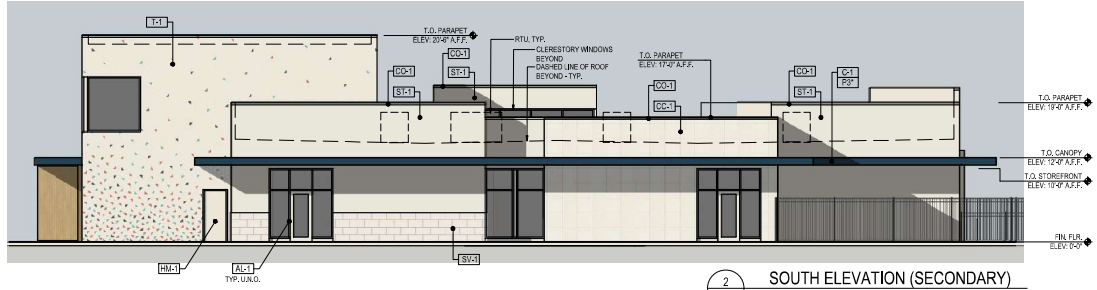
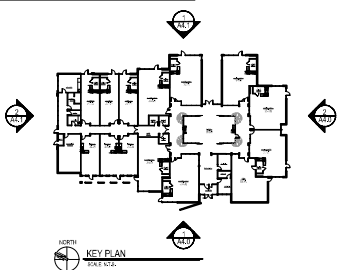


EXTERIOR FINISH MATERIAL SCHEDULE								
MARK	MATERIAL	COLOR / NAME	REMARKS	CLASS	WEST (SFR/40%)	SOUTH (SECONDARY)		
					AREA	% AREA		
[E1-1]	ALUMINUM GLASS	CLEAR ANODIZED	ALUMINUM STOREFRONT - KAWNEER TRIFAB VG-451T	1	755	19.8	314	12.5
[E1-2]	ALUMINUM CLADDING	R100	ALUM. STOREFRONT - TRIFAB VG 451T W/ KNOTWOOD ALUM. CLADDING	1	237	6.2	-	-
[E1-3]	ALUMINUM CLADDING	R100	KNOTWOOD ALUMINUM COMPOSITE CLADDING	3	192	4.8	-	-
[E1-4]	ALUMINUM BATTENS	R100	KNOTWOOD ALUMINUM BATTENS	3	-	-	-	-
[E1-5]	METAL CANOPY	MATCH P2	PRE-ENGINEERED CANOPY ATTACHMENT PER STRUCTURAL	4	147	3.9	109	4.3
[E1-6]	METAL COPING	---	PRE-FINISHED COPING CAP MATCH ADJACENT EXTERIOR WALL FINISH	-	-	-	-	-
[E1-7]	MORING TILE	MULTI-COLORED	AIRFAC GLAZED PORCELAIN	3	760	19.8	655	25.9
[E1-8]	STUCCO	MATCH P2	3" TOP OVERHANG OR EQUAL	2	1,206	31.6	807	30.9
[E1-9]	STONE VENEER	LIMESTONE - CREAM	THE CLAWNY HILL - CHAMPAGNE	4	135	3.6	124	4.1
[E1-10]	CONCRETE CLADDING	STD. VANILLA MATTE	SEIDER GRCPC CONCRETE SPIN OR EQUAL, 24" x 24" PANELS	1	388	10.2	413	16.3
[E1-11]	HOLLOW METAL	MATCH P2	HALL DOOR & FRAME - PAINTED TO MATCH ADJACENT WALL FINISH	-	-	-	-	-
[P1]	PAINT	LANCASTER WHITE	BENJAMIN MOORE (BM OC-144)	-	-	-	-	-
[P2]	PAINT	TWILIGHT	BENJAMIN MOORE (BM 2066-10)	-	-	-	-	-
TOTAL					3,811		2,538	
CLASS 102					2,722	71.4%	1,792	68.8%
CLASS 4					147	3.9%	109	4.3%
GLASS					992	26.0%	-	-

ALL EXTERIOR GROUND MOUNTED AND ALL ROOFTOP BUILDING HVAC AND MECHANICAL EQUIPMENT VENTS, PIPING, ROOF ACCESS LADDERS AND UTILITY METERS MUST BE LOCATED OUT OF VIEW OR OTHERWISE SCREENED FROM PUBLIC VIEW.

REQUIRE TO BE APPROVED ADMINISTRATIVELY THROUGH A SEPARATE APPLICATION AND IS SUBJECT TO THE REQUIREMENTS OF UDO 15.05.102.



PRELIMINARY  
NOT FOR CONSTRUCTION



CREME DE LA CREME  
OLATHE, KS  
COLLEGE BLVD AND VALLEY RD  
THESE DOCUMENTS CONTAIN INFORMATION PROPRIETARY TO ADA ARCHITECTS, INC.  
UNAUTHORIZED USE OF THESE DOCUMENTS IS EXPRESSLY PROHIBITED UNLESS AGREED UPON IN WRITING.

REVISIONS		
#	DATE	TYPE
1	10/22/24	CM Command Revisions
2		
3		
4		
5		
6		
7		
8		

EXTERIOR ELEVATIONS

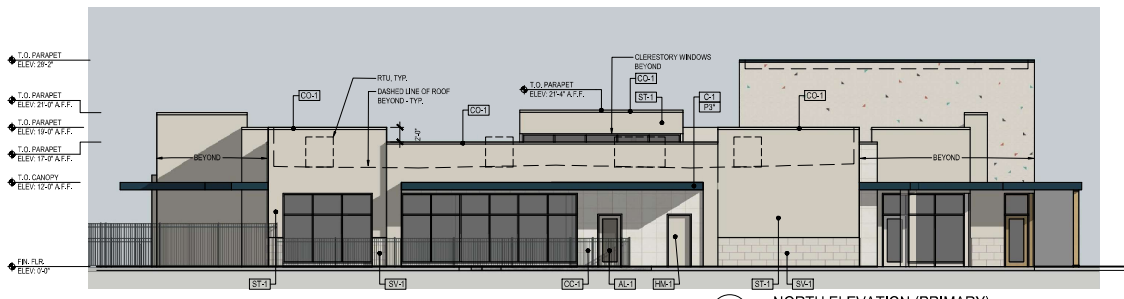
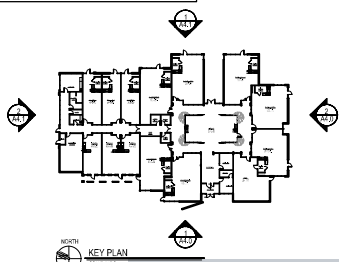
DATE 07/18/2023  
JOB NO. 23284

A-4.0  
SHEET NO.

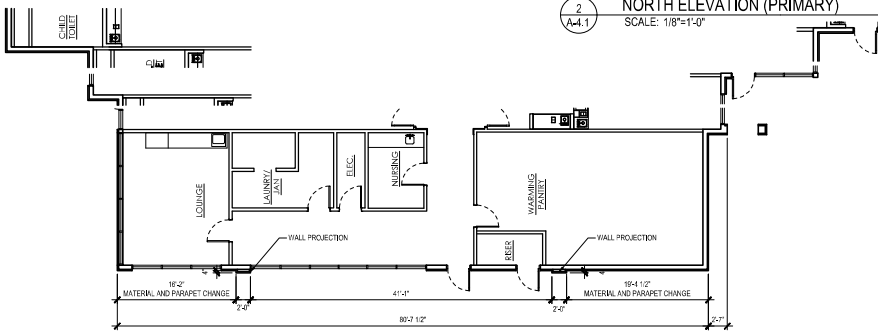
EXTERIOR FINISH MATERIAL SCHEDULE				EAST PRIMARY		NORTH PRIMARY		
WPKL	MATERIAL	COLOR/NAME	REMARKS	CLASS	AREA	%	AREA	%
CC-1	ALUMINUM/GLASS	CLEAR ANODIZED	ALUMINUM STOREFRONT - KAWNEER TRIFAB VS 451T	1	1,067	31.3	384	27.1
CC-2	ALUMINUM/CLADDING	RIBKO	ALUM. STOREFRONT - TRIFAB VS 451T W/ KNOTWOOD ALUM. CLADDING	1	-	-	-	-
CC-3	ALUMINUM CLADDING	RIBKO	KNOTWOOD ALUMINUM CLADDING	3	-	-	-	-
CC-4	ALUMINUM BATTENS	RIBKO	KNOTWOOD ALUMINUM BATTENS	3	-	-	-	-
CC-5	METAL CANOPY	MATCH P3	PRE-ENGINEERED CANOPY, ATTACHMENT PER STRUCTURAL	4	170	5.0	41	2.9
CC-6	METAL COPING	---	PRE-PRIMED COPING CAP, MATCH ADJACENT EXTERIOR WALL FINISH.	-	-	-	-	-
CC-7	MOSAIC TILE	MATCH P2	ARTIFICIALLY GLAZED PORCELAIN	3	-	-	-	-
CC-8	STUCCO	MATCH P2	STOPOVER WALL OR EQUAL	2	1,436	41.8	730	51.5
CC-9	STONE VENEER	LIMESTONE - CREAM	THE QUARRY MILL - CAMBRIDGE	1	77	2.4	94	6.7
CC-10	CONCRETE CLADDING	STD. VANILLA MATTE	REDDER GRC CONCRETE SKIN OR EQUAL, 2F x 2F PANELS	1	676	19.2	145	10.2
CC-11	HOLLOW METAL	MATCH P2	SLIDING DOOR & FRAME - PAINTED TO MATCH ADJACENT WALL FINISH	4	-	-	24	1.8
CC-12	PAINT	LANCASTER WHITE	BENJAMIN MOORE (BM CC-144)	-	-	-	-	-
CC-13	PAINT	TWILIGHT	BENJAMIN MOORE (BM 2055-10)	-	-	-	-	-
				TOTAL	3,420		1,419	
				CLASS 10	3,259	95.0%	999	95.9%
				CLASS 4	170	5.0%	88	6.5%
				GLASS	1,067	31.5%	381	27.1%

ALL EXTERIOR GROUND MOUNTED AND ALL ROOFTOP BUILDING HVAC AND MECHANICAL EQUIPMENT, UNITS, PIPING, ROOF ACCESS LADDERS AND UTILITY METERS MUST BE LOCATED OUT OF VIEW OR OTHERWISE SCREENED FROM PUBLIC VIEW.

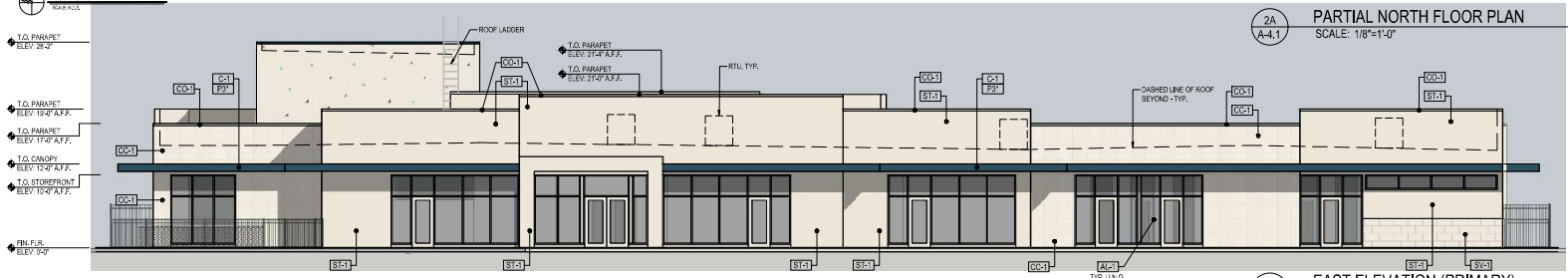
SEALING TO BE APPROVED ADMINISTRATIVELY THROUGH A SEPARATE APPLICATION AND IS SUBJECT TO THE REQUIREMENTS OF UDO 18.50.119



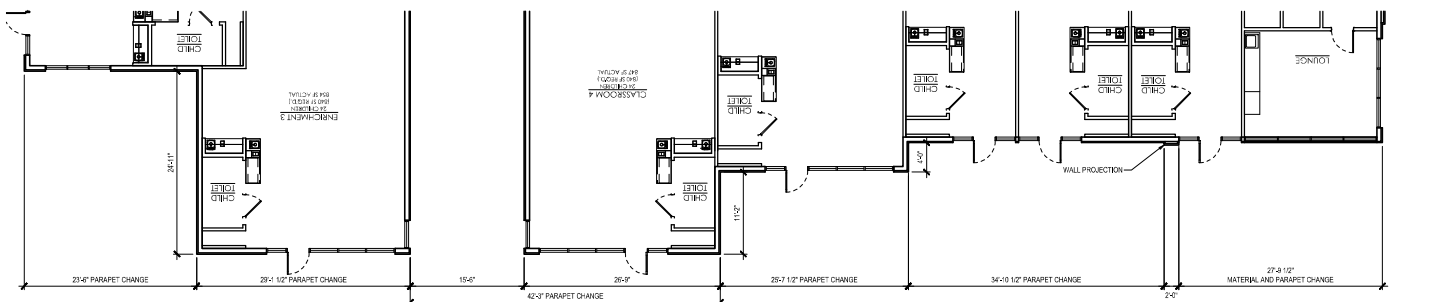
2 NORTH ELEVATION (PRIMARY)  
SCALE: 1/8"=1'-0"



2A PARTIAL NORTH FLOOR PLAN  
SCALE: 1/8"=1'-0"



1 EAST ELEVATION (PRIMARY)  
SCALE: 1/8"=1'-0"



1A PARTIAL EAST FLOOR PLAN  
SCALE: 1/8"=1'-0"

PRELIMINARY  
NOT FOR CONSTRUCTION



CREME DE LA CREME  
COLLEGE BLVD AND VALLEY RD  
OLATHE, KS  
THESE DOCUMENTS CONTAIN INFORMATION PROPRIETARY TO ADA ARCHITECTS, INC.  
UNAUTHORIZED USE OF THESE DOCUMENTS IS EXPRESSLY PROHIBITED UNLESS AGREED UPON IN WRITING.

REVISIONS			
#	DATE	TYPE	BY
1	10/22/24	City Comment/Revisions	
2			
3			
4			
5			
6			
7			
8			

EXTERIOR ELEVATIONS

DATE 07/18/2023  
JOB NO. 23284

A-4.1  
SHEET NO.



2  
RE-1

WEST ELEVATION - VIEW 2  
SCALE: N.T.S



1  
RE-1

WEST ELEVATION - VIEW 1  
SCALE: N.T.S

PRELIMINARY  
NOT FOR CONSTRUCTION

**ADA**  
ARCHITECTS

17710 Dorset Avenue, Lakewood, Ohio, 44107  
Phone: (216) 232-3134 Fax: (216) 321-4824  
www.adaarchitects.com

CREME DE LA CREME

OLATHE, KS

COLLEGE BLVD AND VALLEY RD

THESE DOCUMENTS CONTAIN INFORMATION PROPRIETARY TO ADA ARCHITECTS, INC.  
UNAUTHORIZED USE OF THESE DOCUMENTS IS EXPRESSLY PROHIBITED UNLESS AGREED UPON IN WRITING.

REVISIONS

#	DATE	TYPE	BY	REVISIONS
1	10/20/23	City Comment	Revisors	
2				
3				
4				
5				
6				
7				
8				

EXTERIOR RENDERINGS

DATE: 07/18/2023

JOB NO.: 23284

**RE-1**

SHEET NO.



2 NORTH ELEVATION - VIEW 3  
RE-2 SCALE: N.T.S



1 EAST ELEVATION - VIEW 4  
RE-2 SCALE: N.T.S

PRELIMINARY  
NOT FOR CONSTRUCTION



17710 Detroit Avenue, Lakewood, Ohio, 44107  
Phone (216) 521-5134 Fax (216) 521-4824  
www.adaarchitects.com

CREME DE LA CREME

COLLEGE BLVD AND VALLEY RD OLATHE, KS

THESE DOCUMENTS CONTAIN INFORMATION PROPRIETARY TO ADA ARCHITECTS, INC.  
UNAUTHORIZED USE OF THESE DOCUMENTS IS EXPRESSLY PROHIBITED UNLESS AGREED UPON IN WRITING.

REVISIONS

#	DATE	TYPE	REVISIONS
1	03/22/24	City Comment	Revisions
2			
3			
4			
5			
6			
7			
8			

EXTERIOR RENDERINGS

DATE 07/18/2023  
JOB NO. 23284

RE-2  
SHEET NO.