

PROFESSIONAL SERVICES AGREEMENT

THIS AGREEMENT is made in Johnson County, Kansas, by and between the City of Olathe, Kansas, hereinafter "City," and Westnet, LLC, hereinafter "Consultant" (collectively, the "Parties").

Olathe Fire Station No. 9 **Project No. 6-C-013-23**

City is in need of certain professional services in the field of Alerting Systems for a particular project (the "Project") identified in **Exhibit A (Project Description)**, attached hereto and incorporated herein by reference.

Consultant has expertise in Alerting Systems and activities related to the Project as described in **Exhibit B (Scope of Services)** attached hereto and incorporated by reference.

City contracts with Consultant for the performing of Professional Services in connection with the Project, as described herein, in consideration of these premise and of the mutual covenants herein set forth. By executing this Agreement, Consultant represents to City that Consultant is qualified to perform the work on this Project and is licensed to design and install Alerting Systems by all public entities having jurisdiction over Consultant and the Project.

SECTION I - DEFINITIONS

As used in this Agreement, the following terms will have the following meanings unless otherwise stated or reasonably required by the Agreement, and other forms of any defined words will have a meaning parallel thereto. All terms defined in the most recent version of the Engineers Joint Contract Documents Committee (EJCDC) Standard General Conditions of the Construction Contract (the "General Conditions") adopted by City will have the same meaning when used in this Agreement unless otherwise specifically stated or in the case of a conflict in which case the definition used in this Agreement will prevail in the interpretation of this Agreement.

"Additional Services" means services in addition to those listed in **Exhibit B**.

"City" means the City of Olathe, Kansas, a municipal corporation duly organized under the laws of the State of Kansas, its employees, appointees, and officers.

"Consultant" means the company or individual identified above, herein, and its affiliates, subsidiaries, employees, agents, and assigns.

"Contract Documents" means those documents so identified in this Agreement.

"Consultant Documents" means all documents required or reasonably implied by the

nature of the scope of services to be performed by Consultant hereunder, including, but not limited to, plans, specifications, drawings, tracings, designs, calculations, sketches, models and reports.

"Professional Services" means the professional services, labor, materials, supplies, testing, surveying, title work, inspection, if applicable, and all other acts, duties, and services required of Consultant under this Agreement including any Additional Services.

"Project" is as above described.

"Project Manager" means the person employed and designated by City to act as the City's representative for the Project.

SECTION II - COMPENSATION

A. FEES & EXPENSES

1. Total Fee: City agrees to pay Consultant an amount not to exceed **One Hundred Four Thousand Five Hundred Eighty Three Dollars and Forty Three Cents (\$104,583.43)**, including reimbursable expenses as described herein. The fee is based on the performance of the scope of services outlined in this Agreement, including **Exhibit B** attached hereto and incorporated by reference, and will be billed by Consultant using hourly rates and equipment charges as set forth in **Exhibit C** attached hereto and incorporated by reference, plus reimbursable expenses as set forth below. All bills will be submitted to City monthly as provided herein.
2. Reimbursable Expenses: The fee indicated above includes Consultant's anticipated reimbursable expenses including (a) expense of transportation in connection with the Project; (b) expenses in connection with authorized out-of-town travel; (c) long-distance communications; (d) expenses of printing and reproductions; (e) postage and facsimile transmissions; (f) expenses of renderings and models requested by City, and (g) other costs as authorized by City in writing as set forth herein.

B. SERVICES BEYOND THE SCOPE OF SERVICES

1. Change in Scope: For substantial modifications in authorized Project scope, substantial modifications of drawings, or substantial modifications to specifications previously accepted by City, when requested by City and through no fault of Consultant, Consultant will be compensated for time and expense required to incorporate such modifications at Consultant's standard hourly rates per **Exhibit C**; provided, however, that any increase in fee or extension of time for Consultant to complete the services must be approved by City in writing. Consultant will correct or revise any errors or deficiencies in its designs, drawings or specifications without additional compensation when due to Consultant's negligence or other actionable fault.

2. Additional Services: Consultant will provide Additional Services authorized by a supplemental agreement executed in writing by the Parties. Prior to commencing any Additional Services, Consultant must submit a proposal outlining the Additional Services to be provided, estimation of total hours, completion date, and a maximum fee based upon the hourly rate schedule attached hereto as **Exhibit C**. Such Additional Services may include, but are not limited to, making computations and determinations of special assessments, making special trips requested by City other than those required by Section III, preparing changes in plans ordered by City or made necessary by causes beyond the control of Consultant, providing services necessitated in the event the Professional Services are suspended or abandoned, if such suspension or abandonment is not the result of a breach of this Agreement by Consultant, and providing any other special services not otherwise covered by this Agreement which may be requested by City to complete the Project. Payment to Consultant as compensation for Additional Services will be in accordance with the hourly rate schedule attached as **Exhibit C**.
3. Special Services: Consultant may be called on to serve as a consultant or witness in any litigation, arbitration, legal or administrative proceeding arising out of this Project. If Consultant is requested, in writing, by City, to appear as a witness, it will be paid its hourly fee as reflected on the hourly rate schedule attached hereto as **Exhibit C**. Consultant will not be paid extra by City if Consultant's appearance is to defend its Professional Services.

C. BILLING & PAYMENT

1. Billing: Consultant may bill City monthly for completed Professional Services, including reimbursable expenses. The bill submitted by Consultant must itemize the Professional Services and reimbursable expenses for which payment is requested. City agrees to pay Consultant within thirty (30) days of approval by the Governing Body or other agent of City in accordance with the City's Procurement Policy.
2. City's Right to Withhold Payment: In the event City becomes credibly informed that any representations of Consultant provided in its monthly billing are wholly or partially inaccurate, City may withhold payment of sums then or in the future otherwise due to Consultant until the inaccuracy and the cause thereof is corrected to City's reasonable satisfaction. In the event City questions some element of an invoice, that fact will be made known to Consultant immediately. Consultant will help effect resolution and transmit a revised invoice, if necessary. Amounts not questioned by City will be paid to Consultant in accordance with the contract payment procedures.
3. Progress Reports: A progress report must be submitted with each monthly pay request indicating the percentage of Professional Services completed to date. This report will serve as support for payment to Consultant.

D. SCHEDULE

All services must be completed on or before April 2025.

SECTION III - RESPONSIBILITIES OF CONSULTANT

Consultant will perform the Professional Services required for the execution of the Project as described in **Exhibit B**.

A. GENERAL DUTIES AND RESPONSIBILITIES

1. Personnel: Consultant will assign only qualified personnel to perform any service concerning the Project as identified in Consultant's response to the Request for Proposals. At the time of execution of this Agreement, the Parties anticipate that the following individual will perform as the principal on this Project: Daniel Spillman. As principal on this Project, this person will be the primary contact with the City's Project Manager and will have authority to bind Consultant. So long as the individual named above remains actively employed or retained by Consultant, such individual will perform the function of principal on this Project.
2. Service By and Payment to Others: Any services authorized in writing by City and performed by any party other than Consultant or its subcontractors (a "Third Party") in connection with the proposed Project will be contracted for and paid for by City. In addition to payments for the Third Party's professional services, this may also include necessary permits, licenses, ownership certifications, materials testing, advertising costs, and other special tests or other services required or requested by City or Consultant which are not defined within the scope of services of Consultant as set forth herein. Fees for such extra services will be subject to negotiation between City and the Third Party. Fees will be approved by City in writing prior to the execution of any extra services. Although Consultant may assist City in procuring such services of Third Parties, Consultant will in no way be liable to either City or such Third Parties in any manner whatsoever for such services or for payment thereof.
3. Subcontracting or Assignment of Services: Consultant may not subcontract or assign any of the Professional Services to be performed under this Agreement without first obtaining the written approval of City. Unless otherwise stated in the written consent to an assignment, no assignment will release or discharge Consultant from any obligation under this Agreement. Any person or firm proposed for subcontracting Professional Services under this Agreement will maintain throughout the duration of the Agreement, insurance as provided in Section V.D.2. herein, and will additionally maintain Professional Liability insurance in a minimum amount of \$1,000,000 per claim and in the aggregate and provide City with an insurance certificate showing the insurance limits provided by Consultant's subconsultant. Any services completed by a City-approved subcontractor of Consultant pursuant to this Agreement may not be increased more than ten percent (10%) over the

actual cost of the services.

4. Endorsement: Consultant must sign and seal all final plans, specifications, estimates and engineering data furnished by Consultant. Any review or approval by City of any documents prepared by Consultant, including but not limited to the plans and specifications, will be solely for determining whether such documents are consistent with the City of Olathe Technical Specifications and Design Criteria for Public Improvements and may not be construed as City assuming responsibility for the accuracy, adequacy, fitness, suitability and coordination of Consultant's services and deliverables. No review of such documents will relieve Consultant of its responsibility for the accuracy, adequacy, fitness, suitability and coordination of its services and deliverables.
5. Inspection of Documents: Consultant must maintain all Project records for inspection by City at reasonable times and places upon written request during the contract period and for three (3) years from the date of final payment.
6. Standard of Care: Consultant will exercise the same degree of care, skill, and diligence in the performance of the Professional Services as is ordinarily possessed and exercised by a professional under similar circumstances. If Consultant fails to meet the foregoing standard, Consultant will perform at its own cost, and without reimbursement from City, the Professional Services necessary to correct errors and omissions which are caused by Consultant's negligence.

SECTION IV - CITY OF OLATHE'S RESPONSIBILITIES

A. COMMUNICATION

City will provide to Consultant information and criteria regarding City's requirements for the Project; examine and timely respond to Consultant's submissions; and give written notice to Consultant, who will respond promptly, whenever City observes or otherwise becomes aware of any defect in the Professional Services.

B. DUTIES

City will perform the various duties and services in all phases of the Project which are outlined and designated in **Exhibit B** as City's responsibility.

C. PROGRAM AND BUDGET

City will provide all relevant information reasonably required for Consultant to perform its obligations herein, including but not limited to City's objectives, schedule, constraints, budget with reasonable contingencies, and other necessary design criteria for the Project.

D. ADMINISTRATIVE SERVICES

City will furnish all City-related legal, accounting, insurance and audit services as may be necessary at any time for completion of the Project. However, in no event will any City-related legal, accounting, insurance and or audit services be provided on behalf of Consultant, nor will Consultant serve any other role than as an independent contractor of City.

E. BOND FORMS

City will furnish all bond forms required for the Project.

F. PROJECT REPRESENTATIVE

City will designate a Project Manager to represent City in coordinating this Project with Consultant. The City's Project Manager will have the authority to transmit instructions and decisions of City.

SECTION V - GENERAL PROVISIONS

A. TERMINATION

1. Notice: City reserves the right to terminate this Agreement for either cause (due to Consultant's failure to substantially perform its obligations hereunder) or for its convenience and without cause or default on the part of Consultant, by providing fifteen (15) days' written notice of such termination to Consultant. Upon receipt of such notice from City, Consultant will, at City's option as contained in the notice: (1) immediately cease all Professional Services; or (2) meet with City and, subject to City's approval, determine what Professional Services will be required of Consultant in order to bring the Project to a reasonable termination in accordance with the request of City. Consultant will also provide to City copies of all drawings and documents completed or partially completed at the date of termination for which Consultant has been fully paid. If City defaults on its obligations under this Agreement, (due to City's failure to substantially perform its obligations under this Agreement), Consultant must notify City by written notice of its intent to terminate and City will have fifteen (15) days from the date of the notice to cure or to submit a plan for cure acceptable to Consultant. In no event may Consultant terminate the contract solely for its convenience without cause.

Address for Notice:

City of Olathe
Attn: Zach Hardy
100 E. Santa Fe
P.O. Box 768
Olathe, KS 66051-0768

Westnet, LLC
Attn: Regina Abell, SR Contract Manager
15542 Chemical Lane
Huntington Beach, CA 92649

2. Compensation for Convenience Termination: If City terminates for its convenience as provided herein, City will compensate Consultant for all Professional Services completed and accepted and reimbursable expenses incurred to the date of its receipt of the termination notice and any additional Professional Services and reimbursable expenses requested by City to bring the Project to reasonable termination. Compensation will not include anticipatory profit or consequential damages, neither of which will be allowed.
3. Compensation for Cause Termination: If City terminates for cause or default on the part of Consultant, City will compensate Consultant for the reasonable cost of Professional Services and reimbursable expenses completed and accepted to date of its receipt of the termination notice. Compensation will not include anticipatory profit or consequential damages, neither of which will be allowed. City also retains all its rights and remedies against Consultant including but not limited to its rights to sue for damages, interest and attorney fees.
4. Incomplete Documents: Neither Consultant nor its subcontractors will be responsible for errors or omissions in documents which are incomplete because of an early termination under this Section, or Consultant having been deprived of the opportunity to complete such documents and prepare them to be ready for construction.
5. Termination for Lack of Funds: If, for whatever reason, adequate funding is not made available to City to support or justify continuation of the level of Professional Services to be provided by Consultant under this Agreement, City may terminate or reduce the amount of Professional Services to be provided by Consultant under this Agreement. In such event, City will notify Consultant in writing at least thirty (30) days in advance of such termination or reduction of Professional Services for lack of funds.

B. DISPUTE RESOLUTION

City and Consultant agree that disputes relative to the Project will first be addressed by negotiations between the Parties. If direct negotiations fail to resolve the dispute, the Party initiating the claim that is the basis for the dispute may take such steps as it deems necessary to protect its interests; provided, however, that notwithstanding any such dispute, Consultant will proceed with the Professional Services as per this Agreement as if no dispute existed, and City will continue to make payment for Consultant's completed Professional Services; and provided further that no dispute will be submitted to arbitration without both Parties' express written consent.

C. OWNERSHIP OF CONSULTANT DOCUMENTS

Consultant will provide City a copy of all final Consultant Documents, including but not limited to prints, reproductions, reports, plans, specifications and related documents, which will become the property of City, provided that Consultant's copyrighted instruments will remain in the ownership of Consultant if Consultant, at Consultant's sole discretion, may so identify them

by appropriate markings. If Consultant is paid in full for its Professional Services, then City may subsequently reuse these final documents without any additional compensation or agreement of Consultant. However, such reuse without written verification or adaptation by Consultant for the specific purpose intended by City will be at City's sole risk and without liability or legal exposure to Consultant. City does not take any responsibility for the reuse of documents by others.

D. INSURANCE

1. General: Consultant will maintain, throughout the duration of this Agreement, insurance (on an occurrence basis unless otherwise agreed to) of such types and in such amounts as required in **Exhibit D (City of Olathe Insurance Requirements)**. Professional Liability may be written on a "claims made" basis. Consultant will provide certificates of insurance and renewals thereof on forms acceptable to City (**Exhibit E – Certificate of Insurance**). Consultant is required to promptly notify City of a material change or cancellation of any policy listed on the Certificate.
2. Subcontractor's Insurance: If a part of the Professional Services under this Agreement is to be sublet, Consultant will either (a) cover all subcontractors in its insurance policies, or (b) require each subcontractor not so covered to secure insurance which will protect subcontractor against all applicable hazards or risks of loss in the minimum amounts designated herein. If Consultant selects option (b), then Consultant agrees to provide the City's Risk Manager a certificate of insurance acceptable to the Risk Manager at least seven (7) days prior to allowing the subcontractor to perform any services on this Project. Consultant agrees that any subcontractor providing services on said Project without providing a certificate of insurance acceptable to the City's Risk Manager will immediately cease all services on said Project and will assume all financial risk associated with such failure thereto.

E. INDEMNITY

1. Loss: For purposes of indemnification requirements, the term "Loss" means any and all loss, damage, liability or expense, of any nature whatsoever, whether incurred as a judgment, settlement, penalty, fine or otherwise (including reasonable attorney's fees and the cost of defense), in connection with any action, proceeding, demand or claim for injury, including death, to any person or persons or damages to or loss of, or loss of the use of, property of any person, firm or corporation, including the parties hereto, which arise out of or are connected with the performance of this Agreement.
2. Indemnification and Hold Harmless: For purposes of this Agreement, Consultant agrees to indemnify, defend and hold harmless City and its agents from any and all Loss where Loss is caused or incurred as a result of the intentional misconduct, recklessness, negligence, or other actionable fault of Consultant or its subcontractors. Neither acceptance of completed work nor payment therefor nor termination or expiration of this

Agreement releases Consultant of its obligations under this paragraph.

3. Comparative Fault & Contributory Negligence: It is a specific element of consideration of this Agreement that the indemnity in Section V.E.2 will apply notwithstanding the joint, concurring or contributory or comparative fault or negligence of City or any Third Party and, further notwithstanding any theory of law including, but not limited to, a characterization of City's or any Third Party's joint, concurring or contributory or comparative fault or negligence as either passive or active in nature; provided, however, that Consultant's obligation hereunder will not include amounts attributable to the fault or negligence of City or any Third Party for whom Consultant is not responsible.
4. Damage Limitations: The indemnification obligation contained in this Agreement will not be limited by any limitation on amount or type of damages, compensation or benefits payable by or for Consultant or its subcontractors, by the minimum insurance required by this Agreement, nor under workers' compensation acts, disability benefit acts, or other employee benefit acts.
5. Negligence by the City: Consultant is not required hereunder to defend City or its agents from assertions that they were negligent, nor to indemnify and hold them harmless from liability based on City's negligence.

F. AFFIRMATIVE ACTION/OTHER LAWS

1. Kansas Act Against Discrimination: During the performance of this Agreement, Consultant agrees that:
 - a. Consultant will observe the provisions of the Kansas Act Against Discrimination (K.S.A. 44-1001 et seq.) and will not discriminate against any person in the performance of work under the present contract because of race, religion, color, gender, disability, national origin, ancestry, or age;
 - b. in all solicitations or advertisements for employees, Consultant will include the phrase, "equal opportunity employer," or a similar phrase to be approved by the Kansas Human Rights Commission ("commission");
 - c. if Consultant fails to comply with the way Consultant reports to the commission in accordance with the provisions of K.S.A. 44-1031 and amendments thereto, Consultant will be deemed to have breached the present contract and it may be canceled, terminated or suspended, in whole or in part, by City without penalty;
 - d. if Consultant is found guilty of a violation of the Kansas Act Against Discrimination under a decision or order of the commission which has become final, Consultant will be deemed to have breached the present contract and it may be canceled, terminated or suspended, in whole or in part, by the contracting agency; and

- e. Consultant will include the provisions of subsections a. through d. in every subcontract or purchase order so that such provisions will be binding upon such subcontractor or vendor.
- 2. Exceptions to Applicability: The provisions of this Section will not apply to a contract entered into by City with Consultant if (a) Consultant employs fewer than four (4) employees during the term of such contract; or (b) Consultant's contract with City totals Ten Thousand Dollars (\$10,000) or less in aggregate.
- 3. Kansas Age Discrimination in Employment Act: Consultant further agrees and acknowledges that it will abide by the Kansas Age Discrimination In Employment Act (K.S.A. 44-1111 et seq.) and the applicable provision of the Americans With Disabilities Act (42 U.S.C. 12101 et seq.) as well as all other federal, state and local laws, ordinances and regulations applicable to this Project and to furnish any certification required by any federal, state or local governmental agency in connection therewith.
- 4. Kansas Fairness in Public Construction Contract Act: The Parties agree and acknowledge that the services provided under this Agreement are within the scope of the Kansas Fairness in Public Construction Contract Act (K.S.A. 16-1901 et seq.) and that no provision of this Agreement waives, alters, or supersedes any provisions of said Act.

G. ENTIRE AGREEMENT

This Agreement, including all documents and exhibits included by reference herein, constitutes the entire Agreement between the parties and supersedes all prior agreements, whether oral or written, covering the same subject matter. This Agreement may not be modified or amended except in writing mutually agreed to and accepted by both Parties to this Agreement.

H. APPLICABLE LAW, JURISDICTION, AND VENUE

Interpretation of this Agreement and disputes arising out of or related to this Agreement will be subject to and governed by the laws of the State of Kansas, excluding Kansas' choice-of-law principles. Jurisdiction and venue for any suit arising out of or related to this Agreement will be in the District Court of Johnson County, Kansas.

I. NO THIRD-PARTY BENEFICIARIES

Nothing contained herein will create a contractual relationship with, or any rights in favor of, any Third Party.

J. INDEPENDENT CONTRACTOR

Consultant is an independent contractor and not an agent or employee of City.

K. COVENANT AGAINST CONTINGENT FEES

Consultant represents that it has not employed or retained any company or person, other than a bona fide employee working for Consultant, to solicit or secure this Agreement, and that it has not paid or agreed to pay any company or person, other than a bona fide employee, any fee, commission, percentage, brokerage fee, gifts, or any other consideration contingent upon or resulting from the award or making of this Agreement. For breach or violation of this representation, City may terminate this Agreement without liability or may, in its discretion, deduct from the Total Fee or otherwise recover the full amount of such fee, commission, percentage, brokerage fee, gift or contingent fee.

L. NO SOLICITATION TO HIRE CITY EMPLOYEES

1. No Solicitation to Hire: Except as otherwise provided in this section, during the term of this Agreement and for one year after the Agreement's expiration or termination, Consultant must not solicit to hire and then hire, or solicit to contract with and then contract with, any of the City's current employees involved with the oversight or implementation of this Agreement, including but not limited to the Project Manager.
2. No Restriction on City Employees: The foregoing restrictions shall not prevent City employees from affirmatively seeking employment elsewhere.
3. Liquidated Damages: The Parties agree that in the event of a breach of this provision that damages would be uncertain and difficult to accurately estimate. Therefore, if Consultant breaches this provision, Consultant agrees to pay City liquidated damages to the City equal to the annual salary of the applicable employee hired by or contracting with Consultant.

M. COMPLIANCE WITH LAWS

Consultant will abide by all applicable federal, state and local laws, ordinances and regulations applicable to the performance of Professional Services at the time the Professional Services are performed. Consultant will secure all occupational and professional licenses and permits from public and private sources necessary for the fulfillment of the obligations under this Agreement and will provide City a copy of its certificate of good standing to conduct business in the State of Kansas with this Agreement (**Exhibit F**).

N. FORCE MAJEURE CLAUSE

Neither party will be considered in default under this Contract because of any delays in performance of obligations hereunder due to causes beyond the control and without fault or negligence on the part of the delayed party, including but not restricted to, an act of God or of a public enemy, civil unrest, volcano, earthquake, fire, flood, tornado, epidemic, quarantine

restrictions, area-wide strike, freight embargo, unusually severe weather or delay of subcontractor or supplies due to such cause; provided that the delayed party must notify the other party in writing of the cause of delay and its probable extent within ten (10) days from the beginning of such delay. Such notification will not be the basis for a claim for additional compensation. The delayed party must make all reasonable efforts to remove or eliminate the cause of delay and must, upon cessation of the cause, diligently pursue performance of its obligation under the agreement.

O. TITLES, SUBHEADS AND CAPITALIZATION

Titles and subheadings as used herein are provided only as a matter of convenience and will have no legal bearing on the interpretation of any provision of this Agreement. Some terms are capitalized throughout this Agreement but the use of or failure to use capitals has no legal bearing on the interpretation of such terms.

P. SEVERABILITY CLAUSE

If any provision of this Agreement is determined to be void, invalid, unenforceable or illegal for whatever reason, such provision(s) will be null and void; provided, however, that the remaining provisions of this Agreement will be unaffected and will continue to be valid and enforceable.

Q. AMBIGUITY CLAUSE AND HIERARCHY OF INTERPRETATION

If any ambiguity, inconsistency or conflict arises in the interpretation of this Agreement, the same will be resolved by reference first to the terms and conditions of this Agreement, and any exhibits attached hereto or incorporated by reference as noted below. In the event of any conflict or inconsistency between this Agreement and its exhibits, the following hierarchy of interpretation will apply:

1. This Agreement;
2. Scope of Services (Exhibit B);
3. City's Request for Proposals/Request for Qualifications (incorporated by reference);
4. Consultant's Response to RFP/RFQ (incorporated by reference).

[The remainder of this page is intentionally left blank.]

R. EXECUTION OF CONTRACT

The parties hereto have caused this Agreement to be executed this ____ day of _____ 20____.

CITY OF OLATHE, KANSAS

By: _____
City Manager


ATTEST:

City Clerk (SEAL)

APPROVED AS TO FORM:

Robert S. Gallimore
City Attorney or Deputy/Assistant City Attorney

Westnet, LLC

By: _____
David Nokes, CEO
15542 Chemical Lane
Huntington Beach, CA 92649

**TABLE OF CONTENTS
OF EXHIBITS**

Exhibit A	Description of Project & Map
Exhibit B	Scope of Services
Exhibit C	Fee & Rate Schedule
Exhibit D	City of Olathe Insurance Requirements
Exhibit E	Certificate of Insurance

EXHIBIT A
Description of Project
Modernization of Fire Stations – Fire Station No. 2

The project is the construction of a new Fire Station No. 9 to be located on the north side of College Boulevard approximately 1,500 feet west of Woodland Road. The scope of services to be provided by this agreement is for design and installation of the first-in alerting systems for the project.



EXHIBIT B Scope of Services

Statement Of Work (“SOW”) For First-In Alerting System Installation At Olathe Fire Department Station #9

**WESTNET**

15542 Chemical Lane
Huntington Beach, CA 92649
Phone: 714-548-3500 Fax: 714-901-5610
www.FirstInAlerting.com



Quote: Olathe Fire Department Station #9 First-In Alerting Smart Station System Revised

To: Olathe Fire Department, KS**From: Daniel Spillman**

Olathe Fire Department, KS

1225 S. Hamilton Circle

Olathe, KS 66061

Contact:

Summary

Total Amount:	\$104,583.43	Quote ID:	Q-10011-K3J4 Revision: 1
Shipping Method:	Ground	Date:	11/11/2024
Payment Terms:	Net 30	Effective To:	1/17/2025
Description:	This quote is for Olathe Fire Department Station #9 First-In Alerting Smart Station System including installation and one year of technical support.		
Clarifying Comments:	<p>This quote is based upon installation occurring in 1 trip. If the station is not ready and additional trips are required, the customer agrees to pay additional fees. The customer is responsible for all network connectivity between dispatch and station, as well as the CAD interface if network activation is desired. Customer is responsible for having the radio, network equipment and power within 6 feet of the Master Control Unit. Quote does not include conduit of more than 20 feet, if required. Customer to provide VPN access to Westnet for remote adjustments and support.</p> <p>Quote does not include Davis Bacon, union, or prevailing wage rates, customer is responsible if applicable.</p> <p>Quote does not include sales or use tax, customer is responsible for paying sales or use taxes if applicable.</p> <p>Payment terms are net 30 with payment milestones. Quote does not include permits or bonds.</p> <p>Quote Revised 11/11/2024 to remove Single OSA and replace it with Dual OSA.</p>		

Shipping Information

Ship To:**Bill To:**

Details

Product ID	Product	QTY	Price	Sub Total
2U-SLT-SH-KIT	2U Slotted Shelf - Kit	3.00	\$85.00	\$255.00
FIN-AUX-L01	First-In MCU Auxiliary Module Lite	1.00	\$635.00	\$635.00
HPA-200D	High Power Paging Audio Module (includes two speakers)	1.00	\$2,175.49	\$2,175.49
RK-WM-1U	Wire Management - 1 Unit - Kit	3.00	\$65.00	\$195.00
SACTXTLTG-1	Active-X-IT Lighting - single 7.5' unit	3.00	\$525.00	\$1,575.00
SDRM38V-FM	Dorm Remote - Flush Mount Kit also required	8.00	\$945.00	\$7,560.00
SDRMKIT-TBD	Dorm Remote Mounting Kit - TBD	8.00	\$310.00	\$2,480.00
SPC28-HS-1K2PS	Power Module w/ Hub & Spoke Controller, UPS & Dual Power Supplies	2.00	\$2,255.99	\$4,511.98
SPC28-PL-2PS	Power Module w/ Light Controller & Dual Power Supplies	1.00	\$1,116.00	\$1,116.00
SS-AST-LF	Alerting Strobe Light Fixture	2.00	\$225.00	\$450.00
SSAT	Satellight (driven off Satellight Controller)	6.00	\$295.00	\$1,770.00

Product ID	Product	QTY	Price	Sub Total
SSATKIT-TBD	Satellight Mounting Kit - TBD	20.00	\$48.00	\$960.00
SSAT-M	Satellight Controller	14.00	\$599.98	\$8,399.72
SS-DVC	Digital Volume Controller	3.00	\$225.00	\$675.00
SSETS	Emergency Button	2.00	\$225.00	\$450.00
SS-OSA-D	Outside Speaker Audio Module (includes two speakers)	1.00	\$698.98	\$698.98
SS-SLA-4L	Alerting Strobe Light Adaptor	1.00	\$95.00	\$95.00
SS-TIM-01	Telephone Interface Module	1.00	\$1,199.95	\$1,199.95
SS-TTMR-M	Turnout Timer (Medium-17.37 inch)	1.00	\$825.00	\$825.00
SVC-LIFT-FEE	Lift Service Fee	1.00	\$1,500.00	\$1,500.00

NOTES:

1. In the event that taxes, other than sales tax apply to the purchase of this equipment, said taxes will be paid by the customer.
2. Quote is based on a properly working and installed CAD, radio system(s), station radio(s) and does not include costs for repair or modifications of the CAD, radio system(s), or station radio(s).
3. Any equipment drawings included with this quote are for quoting purposes only and are not to be used as working drawings unless such drawings are labeled "Installation Drawings". See attached Limited Warranty.

Equipment Total	\$37,527.12
Install Supplies	\$2,205.00
Total Tax (%)	\$0.00
Shipping and Handling	\$3,185.00
Station Equipment Install	\$54,135.00
FIAP Install, Commissioning, and Testing	\$0.00
FIAP Training	\$0.00
One Year Toll Free Technical Support	\$4,061.31
Project Coordination	\$2,220.00
Special Engineering Services	\$1,250.00
Total Amount	\$104,583.43

Manufacturer's warranties apply on all parts. First-In warranty is provided by Westnet and consists of one-year parts and labor. Warranty does not apply to damage resulting from outside agencies or extraneous circumstances. Installation labor for any other items is ninety days. This quote is based on the reasonable assumption that the fire station is prepared to accept the above listed parts and that any existing equipment involved with the fire station alarm be in good working order or that it will be prior to commencement of the First-In installation. Westnet has made reasonable attempts to verify that conditions are satisfactory such that installation may occur. However, should an occurrence arise where further parts, labor and/or engineering are required, the customer may be billed at the Purchase Order rate. Any additional parts, labor and/or engineering exceeding \$250 will have prior approval, unless otherwise specified by the customer prior to commencement.

If payment is not received by 30 (thirty) days from the date of invoice, a late charge of 1.5% per month of the unpaid balance will be charged to that particular invoice.

OLATHE
FIRE STATION # 9
CITY OF OLATHE
COLLEGE BLVD & S. CRESTONE,
OLATHE, KS



COPYRIGHT 2022
WESTNET LLC.
ALL RIGHTS RESERVED

REV	REVISION	DATE	BY



ALERT
SYSTEM

DRAWING INDEX

SHEET NO.	SHEET CONTENTS	12/11/24							
COVER	COVER SHEET	●							
AS1.1	ALERT SYSTEM 1ST FLOOR DEVICE PLAN	●							
AS1.2	ALERT SYSTEM 2ND FLOOR DEVICE PLAN	●							
AS3.1	ALERT SYSTEM 1ST FLOOR CONDUIT PLAN	●							
AS3.2	ALERT SYSTEM 2ND FLOOR CONDUIT PLAN	●							
AS4.1	ALERT SYSTEM DEVICE DETAILS	●							
AS4.2	ALERT SYSTEM DEVICE DETAILS	●							
AS4.3	ALERT SYSTEM DEVICE DETAILS	●							
AS4.4	ALERT SYSTEM DEVICE DETAILS	●							
AS4.5	ALERT SYSTEM DEVICE DETAILS	●							

PROJECT NAME:
OLATHE
FIRE STATION # 9
COLLEGE BLVD & S. CRESTONE,
OLATHE, KS

NOTE:
IF THIS SCALE IS NOT 1"=1'
THIS SHEET IS NOT TO SCALE.

DATE: 12/11/2024

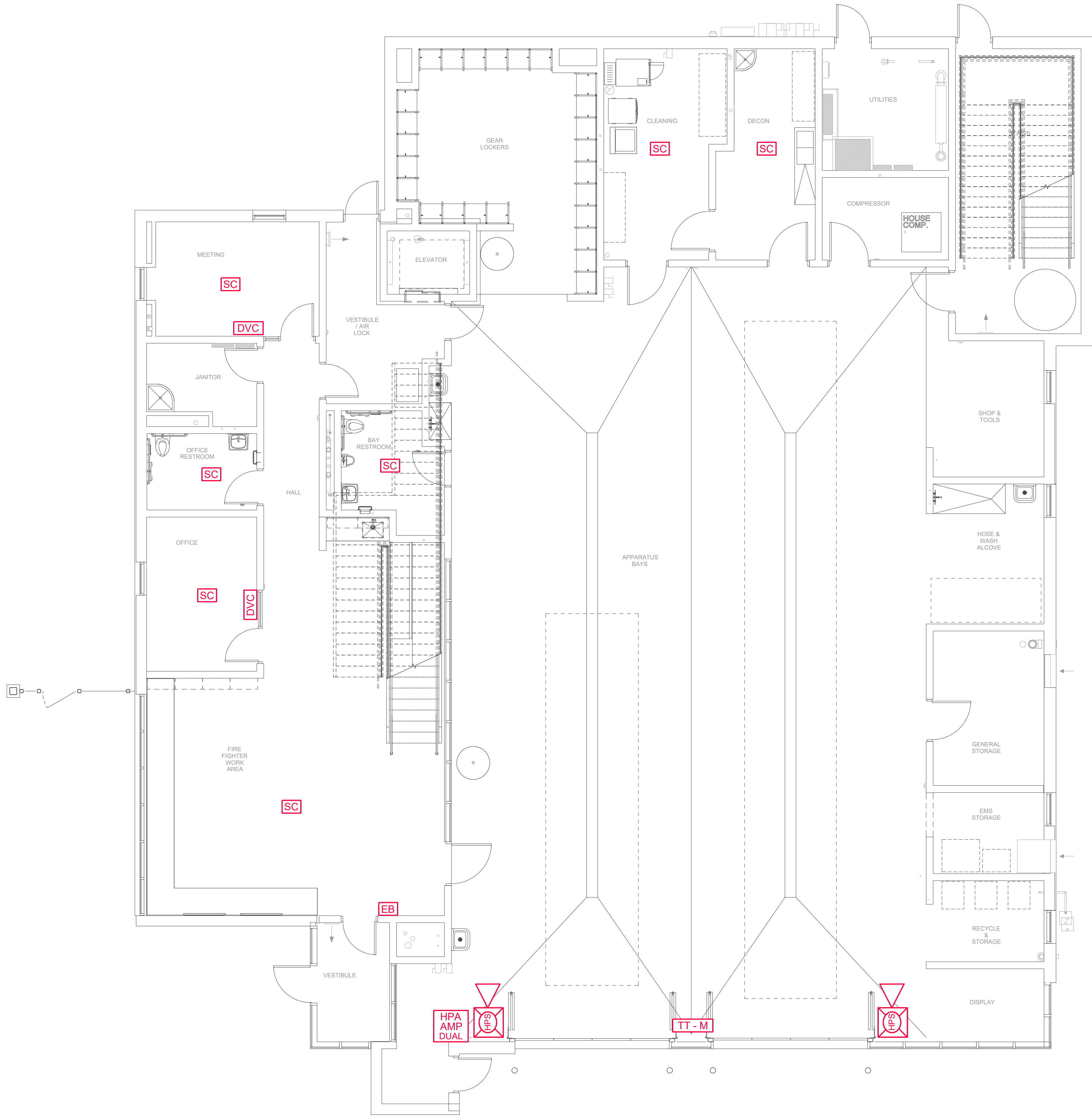
DRAWN BY: EV

SCALE: N.T.S.

TITLE: COVER

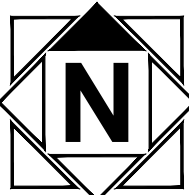
SHEET

COVER



ALERT SYSTEM - 1ST FLOOR DEVICE LAYOUT PLAN

SCALE: N.T.S.



FIRST-IN FIRE
STATION ALERTING

SYMBOL LEGEND

	MASTER CONTROL UNIT
	DATA LINE SURGE PROTECTOR
	TELEPHONE INTERFACE MODULE
	CONTROL REMOTE
	RADIO ISOLATION UNIT
	AUXILIARY MODULE
	POWER MODULE WITH UPS-BLACK (DEDICATED 120V CIRCUIT REQUIRED, INDIVIDUAL BREAKER RECOMMENDED)
	POWER MODULE WITH UPS-BLUE (DEDICATED 120V CIRCUIT REQUIRED EACH PM ON INDIVIDUAL BREAKER)
	SATELLIGHT
	SATELLIGHT CONTROLLER
	TURNOUT TIMER MEDIUM
	HIGH-POWERED AMPLIFIED SPEAKER IN CONJUNCTION WITH
	HIGH-POWERED AMPLIFIER MODULE DUAL
	OUTSIDE SPEAKER AUDIO MODULE DUAL
	OUTSIDE SPEAKER - IN CONJUNCTION WITH
	EMERGENCY BUTTON
	DORM REMOTE
	DORM LIGHT
	ALERTING STROBE LIGHT ADAPTER
	ALERTING STROBE LIGHT FIXTURE - IN CONJUNCTION WITH
	DIGITAL VOLUME CONTROL
	ACTIVE X-IT LIGHT STRIP 7FT

GENERAL NOTES

- 1 DEVICES ARE TYPICAL AND FOR REFERENCE ONLY.
- 2 ALL BACK BOXES & CONDUITS ARE TO BE FLUSH MOUNTED UNLESS OTHERWISE SPECIFIED FOR NEW CONSTRUCTION.
- 3 DEVICES LOCATED IN ACOUSTICAL CEILINGS DO NOT REQUIRE BACKBOXES
- 4 DEVICES LOCATED IN ACOUSTICAL CEILINGS REQUIRE ACOUSTICAL WESTNET MOUNTING KIT (SSATKIT-A)
- 5 DEVICES ONLY LOCATED IN SHEETROCK OR EXPOSED CEILINGS REQUIRE HOFFMAN BRAND 8X10X4 BACKBOX
- 6 DEVICES ONLY LOCATED IN SHEETROCK OR EXPOSED CEILINGS REQUIRE APPROPRIATE WESTNET MOUNTING KIT (SURFACE MOUNT OR FLUSH MOUNT) FOR NEW CONSTRUCTION.
- 7 LOCATIONS OF DEVICES DETERMINED AT INSTALLATION BY INSTALLER FOR NEW CONSTRUCTION.
- 8 SEE ARCHITECTURAL SPECIFICATION FOR ALL ROUGH-IN AND INSTALLATION DETAILS FOR NEW CONSTRUCTION.
- 9 INSTALLER TO VERIFY WALL AND CEILING TYPE TO DETERMINE NEED FOR FLUSH OR SURFACE MOUNT INSTALLATION OF EQUIPMENT SPECIFIED FOR NEW CONSTRUCTION.
- 10 ALL WIRING AND DEVICES TO BE INSTALLED BY WESTNET.
- 11 ALL PENETRATION TO EXTERIOR DEVICES MUST BE WEATHERPROOF AND FIRE CAULKED FOR CONSTRUCTION BY OTHERS.
- 12 DEVICES LOCATED IN BATHROOM/SHOWER AREAS MUST BE VISIBLE FROM SHOWERS. INSTALLER TO FIELD VERIFY DEVICE LOCATION. (TYPICAL)
- 13 ALL DEVICES MUST BE KEPT CLEAR OF OBSTRUCTIONS & CEILING FAN BLADES.
- 14 IN ACOUSTICAL CEILING (T-BAR), WIRE CABLING IS FREE WIRE (NOT IN CONDUIT).
- 15 IN GYPSUM BOARD CEILING (SHEET ROCK / HARD LID), WIRE CABLING IN IN 3/4" CONDUIT UNLESS CONDUIT SIZE OTHERWISE NOTED.
- 16 IN EXPOSED AREAS ONLY 8X10X4 HOFFMAN BACK BOX MOUNTED AT +10'-0" A.F.F. MAX. WITH OPEN FACE DOWN IN CENTER OF ROOM WITH 3/4" CONDUIT TO ACCESSIBLE CEILING SPACE, KEEP CLEAR OF OBSTRUCTIONS.
- 17 A 5 OHM EARTH GROUND MUST BE CONNECTED TO THE RADIO ISOLATION UNIT IN THE COMMUNICATION RACK.
- 18 THE RADIO RECEIVING THE DISPATCH INFORMATION SHALL BE LOCATED WITHIN 6'-0" FT. OF THE RADIO ISOLATION UNIT.
- 19 INSTALLER TO PROVIDE ONE ADDITIONAL UNCONNECTED BLUE CAT5 CABLE WITH RJ45 CONNECTORS ON BOTH ENDS BETWEEN THE MCU LOCATION AND EACH ALERTING END POINT FOR NETWORK CONNECTIVITY.

WESTNET/FIRST IN SYSTEM LAYOUT REVIEW

PROJECT: OLATHE FIRE STATION #9

DEPARTMENT: OLATHE, KS

DATE SUBMITTED:

☐ Approved subject to notations and corrections as indicated.

☐ Re-submit corrected Layout for our approval.

☐ Re-submittal of Layout not required.

☐ Rejected/Re-submit Layout

Remarks:

DATE RETURNED:

REVIEWED BY:

DEPT TITLE:

This serves to Certify that this Layout submittal(s) have been reviewed for accuracy and compliance with the general conformance of the design and layout(only) with the Department Contract and/or Contract Documents.

ONLY AFTER APPROVAL OF LAYOUT WILL SUBMITTAL INFORMATION AND QUOTES BE AVAILABLE

Westnet, LLC.
15542 Chemical Lane
Huntington Beach, CA 92649

Phone: (714) 548-3500
Fax: (714) 901-5610
www.FirstInAlerting.com

WESTNET®



15542 CHEMICAL LANE
HUNTINGTON BEACH, CA 92649
TEL: (714) 548-3500 FAX: (714) 901-5610
www.FirstInAlerting.com

COPYRIGHT 2022
WESTNET LLC.
ALL RIGHTS RESERVED

REV	REVISION	DATE	BY



ALERT
SYSTEM

OLATHE
FIRE STATION #9
COLLEGE BLVD & S. CRESTONE,
OLATHE, KS

PROJECT NAME:

NOTE:
IF THIS SCALE IS NOT 1" = 1"
THIS SHEET IS NOT TO SCALE

DATE: 12/11/2024

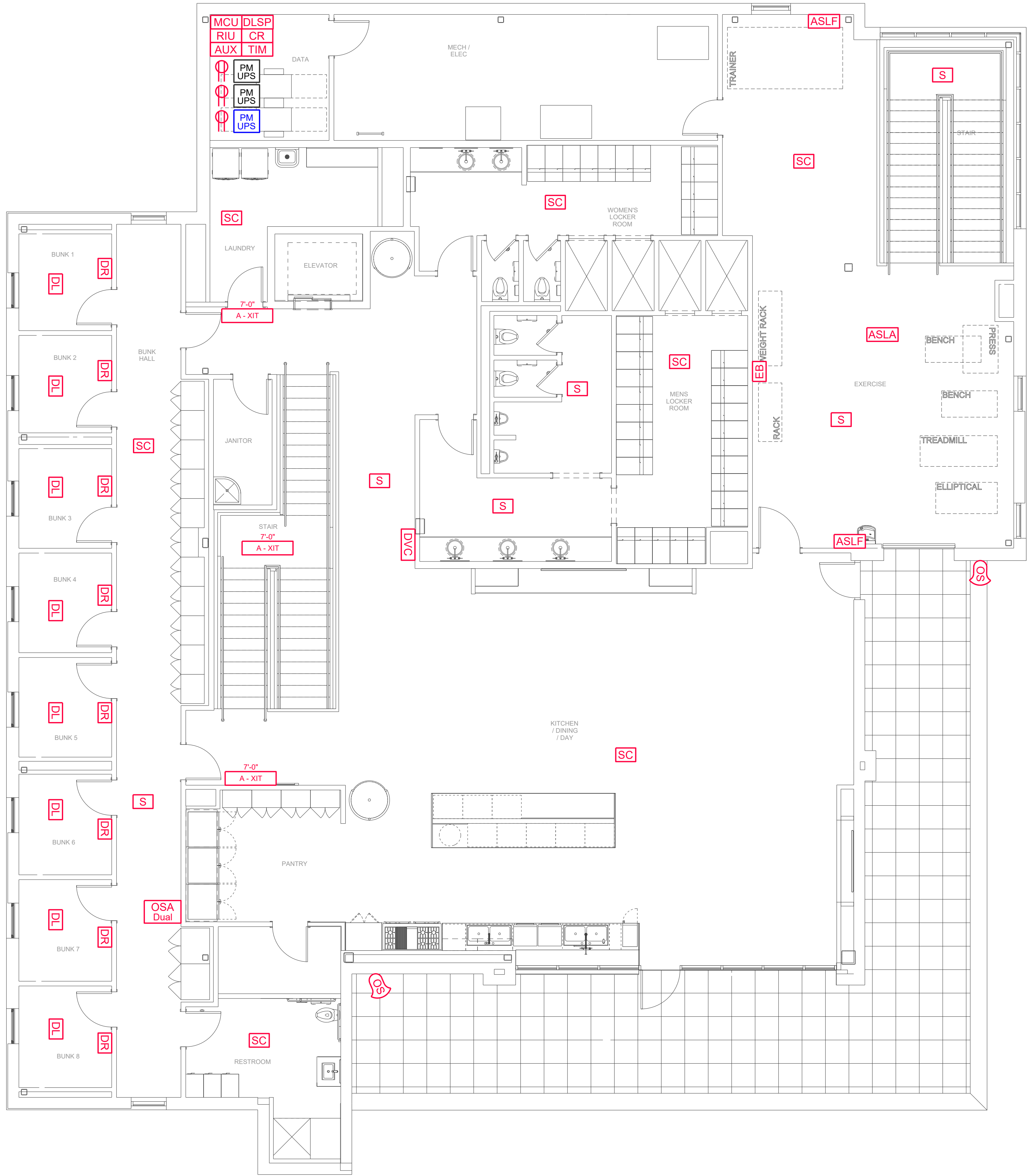
DRAWN BY: EV

SCALE: N.T.S.

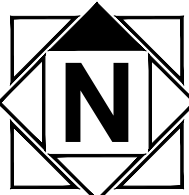
TITLE: 1ST FLOOR DEVICE PLAN

SHEET

AS1.1



ALERT SYSTEM - 2ND FLOOR DEVICE LAYOUT PLAN
SCALE: N.T.S.



FIRST-IN FIRE
STATION ALERTING

SYMBOL LEGEND

MCU	MASTER CONTROL UNIT
DLSP	DATA LINE SURGE PROTECTOR
TIM	TELEPHONE INTERFACE MODULE
CR	CONTROL REMOTE
RIU	RADIO ISOLATION UNIT
AUX	AUXILIARY MODULE
PM UPS	POWER MODULE WITH UPS-BLACK (DEDICATED 120V CIRCUIT REQUIRED, INDIVIDUAL BREAKER RECOMMENDED)
PM UPS	POWER MODULE WITH UPS-BLUE (DEDICATED 120V CIRCUIT REQUIRED EACH PM ON INDIVIDUAL BREAKER)
S	SATELLIGHT
SC	SATELLIGHT CONTROLLER
TT - M	TURNOUT TIMER MEDIUM
HPS	HIGH-POWERED AMPLIFIED SPEAKER IN CONJUNCTION WITH HPA AMP
HPA AMP DUAL	HIGH-POWERED AMPLIFIER MODULE DUAL
OSA Dual	OUTSIDE SPEAKER AUDIO MODULE DUAL
OS	OUTSIDE SPEAKER - IN CONJUNCTION WITH OSA
EB	EMERGENCY BUTTON
DR	DORM REMOTE
DL	DORM LIGHT
ASLA	ALERTING STROBE LIGHT ADAPTER
ASLF	ALERTING STROBE LIGHT FIXTURE - IN CONJUNCTION WITH ASLA
DVC	DIGITAL VOLUME CONTROL
7'-0\" A - XIT	ACTIVE X-IT LIGHT STRIP 7FT

GENERAL NOTES

- DEVICES ARE TYPICAL AND FOR REFERENCE ONLY.
- ALL BACK BOXES & CONDUITS ARE TO BE FLUSH MOUNTED UNLESS OTHERWISE SPECIFIED FOR NEW CONSTRUCTION.
- DEVICES LOCATED IN ACOUSTICAL CEILINGS DO NOT REQUIRE BACKBOXES
- DEVICES LOCATED IN ACOUSTICAL CEILINGS REQUIRE ACOUSTICAL WESTNET MOUNTING KIT (SSATKIT-A)
- DEVICES ONLY LOCATED IN SHEETROCK OR EXPOSED CEILINGS REQUIRE HOFFMAN BRAND 8X10X4 BACKBOX
- DEVICES ONLY LOCATED IN SHEETROCK OR EXPOSED CEILINGS REQUIRE APPROPRIATE WESTNET MOUNTING KIT (SURFACE MOUNT OR FLUSH MOUNT) FOR NEW CONSTRUCTION.
- LOCATIONS OF DEVICES DETERMINED AT INSTALLATION BY INSTALLER FOR NEW CONSTRUCTION.
- SEE ARCHITECTURAL SPECIFICATION FOR ALL ROUGH-IN AND INSTALLATION DETAILS FOR NEW CONSTRUCTION.
- INSTALLER TO VERIFY WALL AND CEILING TYPE TO DETERMINE NEED FOR FLUSH OR SURFACE MOUNT INSTALLATION OF EQUIPMENT SPECIFIED FOR NEW CONSTRUCTION.
- ALL WIRING AND DEVICES TO BE INSTALLED BY WESTNET.
- ALL PENETRATION TO EXTERIOR DEVICES MUST BE WEATHERPROOF AND FIRE CAULKED FOR CONSTRUCTION BY OTHERS.
- DEVICES LOCATED IN BATHROOM/SHOWER AREAS MUST BE VISIBLE FROM SHOWERS. INSTALLER TO FIELD VERIFY DEVICE LOCATION. (TYPICAL)
- ALL DEVICES MUST BE KEPT CLEAR OF OBSTRUCTIONS & CEILING FAN BLADES.
- IN ACOUSTICAL CEILING (T-BAR), WIRE CABLING IS FREE WIRE (NOT IN CONDUIT).
- IN GYPSUM BOARD CEILING (SHEET ROCK / HARD LID), WIRE CABLING IN IN 3/4\" CONDUIT UNLESS CONDUIT SIZE OTHERWISE NOTED.
- IN EXPOSED AREAS ONLY 8X10X4 HOFFMAN BACK BOX MOUNTED AT +10'-0\" A.F. MAX. WITH OPEN FACE DOWN IN CENTER OF ROOM WITH 3/4\" CONDUIT TO ACCESSIBLE CEILING SPACE, KEEP CLEAR OF OBSTRUCTIONS.
- A 5 OHM EARTH GROUND MUST BE CONNECTED TO THE RADIO ISOLATION UNIT IN THE COMMUNICATION RACK.
- THE RADIO RECEIVING THE DISPATCH INFORMATION SHALL BE LOCATED WITHIN 6'-0\" FT. OF THE RADIO ISOLATION UNIT.
- INSTALLER TO PROVIDE ONE ADDITIONAL UNCONNECTED BLUE CAT5 CABLE WITH RJ45 CONNECTORS ON BOTH ENDS BETWEEN THE MCU LOCATION AND EACH ALERTING END POINT FOR NETWORK CONNECTIVITY.

WESTNET/FIRST IN SYSTEM LAYOUT REVIEW

PROJECT: OLATHE FIRE STATION #9

DEPARTMENT: OLATHE, KS

DATE SUBMITTED:

☐ Approved subject to notations and corrections as indicated.

☐ Re-submit corrected Layout for our approval.

☐ Re-submittal of Layout not required.

☐ Rejected/Re-submit Layout

Remarks:

DATE RETURNED:

REVIEWED BY:

DEPT TITLE:

This serves to Certify that this Layout submittal(s) have been reviewed for accuracy and compliance with the general conformance of the design and layout(only) with the Department Contract and/or Contract Documents.

ONLY AFTER APPROVAL OF LAYOUT WILL SUBMITTAL INFORMATION AND QUOTES BE AVAILABLE

Westnet, LLC. Phone: (714) 548-3500
15542 Chemical Lane Fax: (714) 901-5610
Huntington Beach, CA 92649 www.FirstInAlerting.com

WESTNET®



COPYRIGHT 2022
WESTNET LLC.
ALL RIGHTS RESERVED

BY	DATE
REVISION	DATE
REV	DATE



ALERT
SYSTEM

OLATHE
FIRE STATION # 9
COLLEGE BLVD & S. CRESTONE,
OLATHE, KS

PROJECT NAME:

NOTE:
IF THIS SCALE IS NOT 1\" THIS SHEET IS NOT TO SCALE

DATE: 12/11/2024

DRAWN BY: EV

SCALE: N.T.S.

TITLE: 2ND FLOOR DEVICE PLAN

SHEET

AS1.2

NOTE:

1. CONDUIT ROUTING IS FOR REFERENCE ONLY
2. CONDUIT INSTALLER PLACE PULL BOXES AS NEEDED
3. CONDUIT BENDS NOT TO EXCEED 360 DEGREES
4. UNDERGROUND CONDUITS NOT PERMITTED

OPEN CEILING APPLICATION:
* WESTNET 8X10X4 HOFFMAN BACKBOX SURFACED MOUNTED AT 10' A.F.F. MAX.
INSTALLED WITH OPEN FACE DOWN PENDANT MOUNTING MAY BE REQUIRED
* VISIBLE FROM ALL AREAS IN ROOM
* ALERTING SYSTEM DEVICE TO BE CLEAR OF OBSTRUCTIONS (TYPICAL)

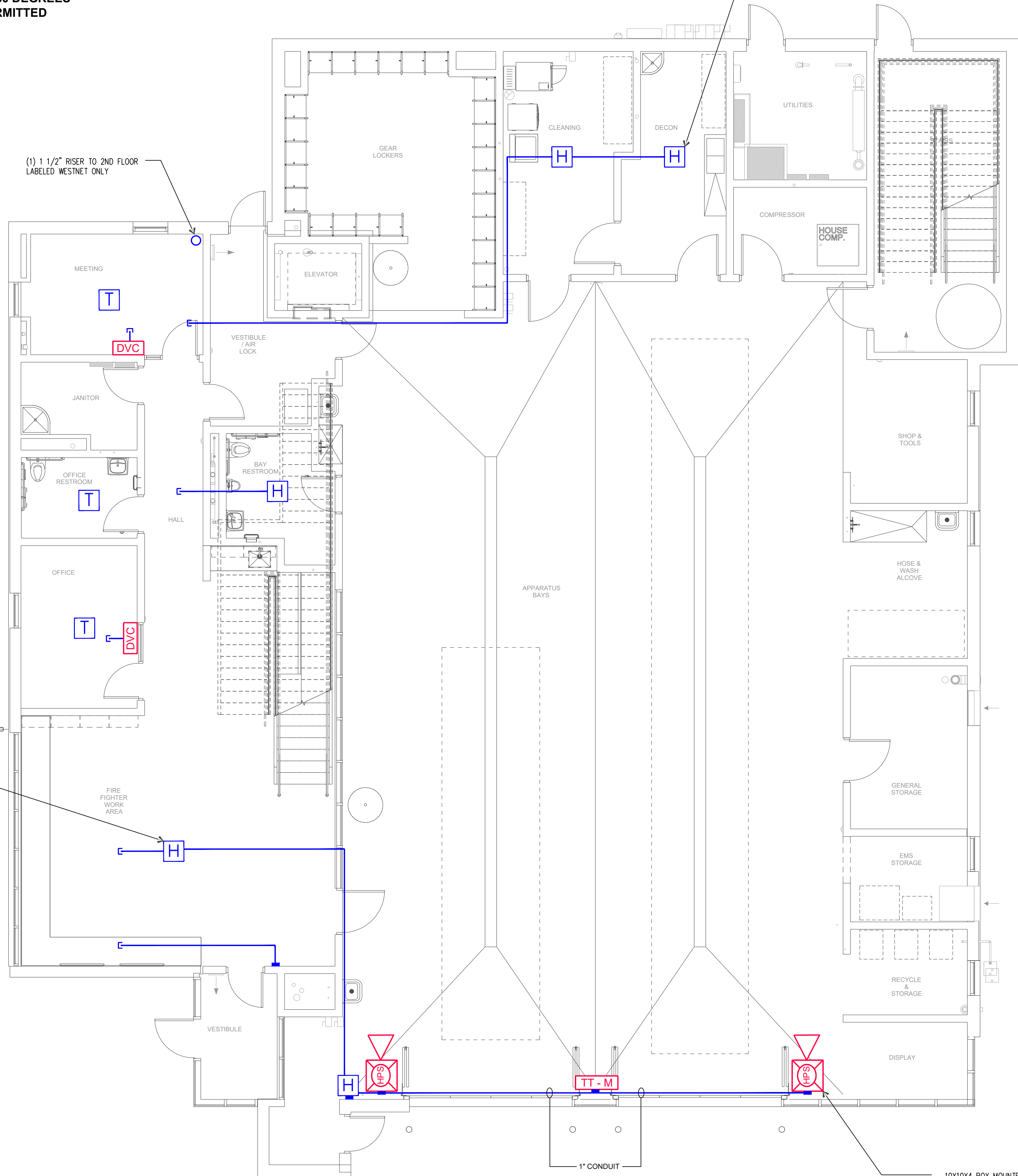
INSTALLERS TO FIELD VERIFY LOCATION OF THE DEVICES.

HARD LID CEILING APPLICATION:
* 8X10X4 HOFFMAN BACKBOX MOUNTED IN SHEETROCK CEILING RECESSED 1/4" BEHIND SHEETROCK FACE
* 3/4" CONDUIT TO NEXT DEVICE KEEP CLEAR OF OBSTRUCTIONS (TYPICAL).

DEVICES MUST BE VISIBLE FROM INSIDE SHOWERS (TYPICAL).

INSTALLERS TO FIELD VERIFY LOCATION OF THE DEVICES.

(1) 1 1/2" RISER TO 2ND FLOOR LABELED WESTNET ONLY



10X10X4 BOX MOUNTED AT +10'-0" A.F.F. WITH 1" CONDUIT TO NEXT LOCATION (TYPICAL).
* STRUT RACK MAY BE REQUIRED LOCATION DETERMINED BY INSTALLER.
* MAY REQUIRE GENERAL CONTRACTOR COORDINATION WITH OTHER TRADES
* KEEP CLEAR OF OBSTRUCTIONS

FIRST-IN FIRE STATION ALERTING

SYMBOL LEGEND

	MASTER CONTROL UNIT
	DATA LINE SURGE PROTECTOR
	TELEPHONE INTERFACE MODULE
	CONTROL REMOTE
	RADIO ISOLATION UNIT
	AUXILLIARY MODULE
	POWER MODULE WITH UPS-BLACK (DEDICATED 120V CIRCUIT REQUIRED, INDIVIDUAL BREAKER RECOMMENDED)
	POWER MODULE WITH UPS-BLUE (DEDICATED 120V CIRCUIT REQUIRED, INDIVIDUAL BREAKER RECOMMENDED)
	HIGH-POWERED AMPLIFIED SPEAKER IN CONJUNCTION WITH
	OUTSIDE SPEAKER - IN CONJUNCTION WITH
	CUSTOM BACKBOX PROVIDED BY WESTNET
	DORM REMOTE BACKBOX PROVIDED WESTNET
	DORM LITE ACOUSTIC CEILING MOUNT KIT
	8x10x4 HOFFMAN BACKBOX
	ACOUSTIC CEILING KIT
	LOCATION OF DEVICE WALL MOUNTED

GENERAL NOTES

1. DEVICES ARE TYPICAL AND FOR REFERENCE ONLY.
2. ALL BACK BOXES & CONDUITS ARE TO BE FLUSH MOUNTED UNLESS OTHERWISE SPECIFIED FOR NEW CONSTRUCTION.
3. DEVICES LOCATED IN ACOUSTICAL CEILINGS DO NOT REQUIRE BACKBOXES
4. DEVICES LOCATED IN ACOUSTICAL CEILINGS REQUIRE ACOUSTICAL WESTNET MOUNTING KIT (SSATKIT-A)
5. DEVICES ONLY LOCATED IN SHEETROCK OR EXPOSED CEILINGS REQUIRE HOFFMAN BRAND 8X10X4 BACKBOX
6. DEVICES ONLY LOCATED IN SHEETROCK OR EXPOSED CEILINGS REQUIRE APPROPRIATE WESTNET MOUNTING KIT (SURFACE MOUNT OR FLUSH MOUNT) FOR NEW CONSTRUCTION.
7. LOCATIONS OF DEVICES DETERMINED AT INSTALLATION BY INSTALLER FOR NEW CONSTRUCTION.
8. SEE ARCHITECTURAL SPECIFICATION FOR ALL ROUGH-IN AND INSTALLATION DETAILS FOR NEW CONSTRUCTION.
9. INSTALLER TO VERIFY WALL AND CEILING TYPE TO DETERMINE NEED FOR FLUSH OR SURFACE MOUNT INSTALLATION OF EQUIPMENT SPECIFIED FOR NEW CONSTRUCTION.
10. ALL WIRING AND DEVICES TO BE INSTALLED BY WESTNET.
11. ALL PENETRATION TO EXTERIOR DEVICES MUST BE WEATHERPROOF AND FIRE CAULKED FOR CONSTRUCTION BY OTHERS.
12. DEVICES LOCATED IN BATHROOM/SOWER AREAS MUST BE VISIBLE FROM SHOWERS. INSTALLER TO FIELD VERIFY DEVICE LOCATION. (TYPICAL)
13. ALL DEVICES MUST BE KEPT CLEAR OF OBSTRUCTIONS & CEILING FAN BLADES.
14. IN ACOUSTICAL CEILING (T-BAR), WIRE CABLING IS FREE WIRE (NOT IN CONDUIT).
15. IN GYPSUM BOARD CEILING (SHEET ROCK / HARD LID), WIRE CABLING IN IN 3/4" CONDUIT UNLESS CONDUIT SIZE OTHERWISE NOTED.
16. IN EXPOSED AREAS ONLY 8X10X4 HOFFMAN BACK BOX MOUNTED AT +10'-0" A.F.F. MAX. WITH OPEN FACE DOWN IN CENTER OF ROOM WITH 3/4" CONDUIT TO ACCESSIBLE CEILING SPACE, KEEP CLEAR OF OBSTRUCTIONS.
17. A 5 OHM EARTH GROUND MUST BE CONNECTED TO THE RADIO ISOLATION UNIT IN THE COMMUNICATION RACK.
18. THE RADIO RECEIVING THE DISPATCH INFORMATION SHALL BE LOCATED WITHIN 6'-0" FT. OF THE RADIO ISOLATION UNIT.
19. INSTALLER TO PROVIDE ONE ADDITIONAL UNCONNECTED BLUE CAT5 CABLE WITH RJ45 CONNECTORS ON BOTH ENDS BETWEEN THE MCU LOCATION AND EACH ALERTING END POINT FOR NETWORK CONNECTIVITY.
BUTTONS AND SWITCHES
* 4 SQUARE DEEP SINGLE GANG RING BOX
* MOUNTED +48" A.F.F.
* 6" - 12" FROM DOOR FRAME
* 3/4" CONDUIT STUB UP ABOVE CEILING TO ACCESSIBLE CEILING SPACE.
* KEEP CLEAR OF OBSTRUCTIONS (TYPICAL)
- 20.

WESTNET/FIRST IN SYSTEM LAYOUT REVIEW

PROJECT: OLATHE FIRE STATION #9

DEPARTMENT: OLATHE, KS

DATE SUBMITTED:

☐ Approved subject to notations and corrections as indicated.

☐ Re-submit corrected Layout for our approval.

☐ Re-submittal of Layout not required.

☐ Rejected/Re-submit Layout

Remarks:

DATE RETURNED:

REVIEWED BY:

DEPT TITLE:

This serves to Certify that this Layout submittal(s) have been reviewed for accuracy and compliance with the general conformance of the design and layout(only) with the Department Contact and/or Contract Documents.

ONLY AFTER APPROVAL OF LAYOUT WILL SUBMITTAL INFORMATION AND QUOTES BE AVAILABLE

Westnet, LLC.
15542 Chemical Lane
Huntington Beach, CA 92649

Phone: (714) 548-3500
Fax: (714) 901-5610
www.FirstInAlerting.com

WESTNET



15542 CHEMICAL LANE
HUNTINGTON BEACH, CA 92649
TEL: (714) 548-3500 FAX: (714) 901-5610
www.FirstInAlerting.com

COPYRIGHT 2022
WESTNET LLC.
ALL RIGHTS RESERVED

REV	REVISION	DATE	BY



**ALERT
SYSTEM**

**OLATHE
FIRE STATION #9**
**COLLEGE BLVD & S. CRESTONE,
OLATHE, KS**

PROJECT NAME:

NOTE:
IF THIS SCALE IS NOT 1"
THIS SHEET IS NOT TO SCALE

DATE: 12/11/2024

DRAWN BY: EV

SCALE: N.T.S.

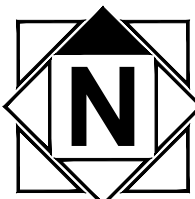
TITLE: 1ST FLOOR CONDUIT PLAN

SHEET

AS3.1

ALERT SYSTEM - 1ST FLOOR CONDUIT PLAN

SCALE: N.T.S.



- NOTE:
1. CONDUIT ROUTING IS FOR REFERENCE ONLY
 2. CONDUIT INSTALLER PLACE PULL BOXES AS NEEDED
 3. CONDUIT BENDS NOT TO EXCEED 360 DEGREES
 4. UNDERGROUND CONDUITS NOT PERMITTED

MCU TO BE LOCATED WITHIN 6 FEET FROM DISPATCH RADIO.

- * 4 SQUARE SINGLE GANG RING BOX MOUNTED AT +8'-0" AFF
- * DEDICATED 120V CIRCUIT REQUIRED
- * 5.0 OHM EARTH GROUND & GROUND BAR REQUIRED (SUPPLIED BY OTHERS).
- * RIU TO BE CONNECTED TO RADIO.
- * TELEPHONE INTERFACE MODULE CONNECTS TO PHONE SYSTEM. IN ORDER TO INSTALL THE TIM, PHONE SYSTEM IS VOIP OR ANALOG.
- * WESTNET REQUIRES THAT THE STATION PROVIDE STANDARD RINGING VOLTAGE AT THE POINT OF CONNECTION.
- * VOIP LINES WILL REQUIRE AN ATA (ANALOG TELEPHONE ADAPTOR), ATA SUPPLIED BY OTHERS. OWNER REQUIRED TO VERIFY, IF NECESSARY, SELECT THE ATA, AS THIS IS PAIRED TO MATCH YOUR PHONE SWITCH, WHICH IS PROVIDED/CONFIGURED BY TELEPHONE SYSTEM TECHNICIAN.

DORM LIGHTS - TILE CEILING

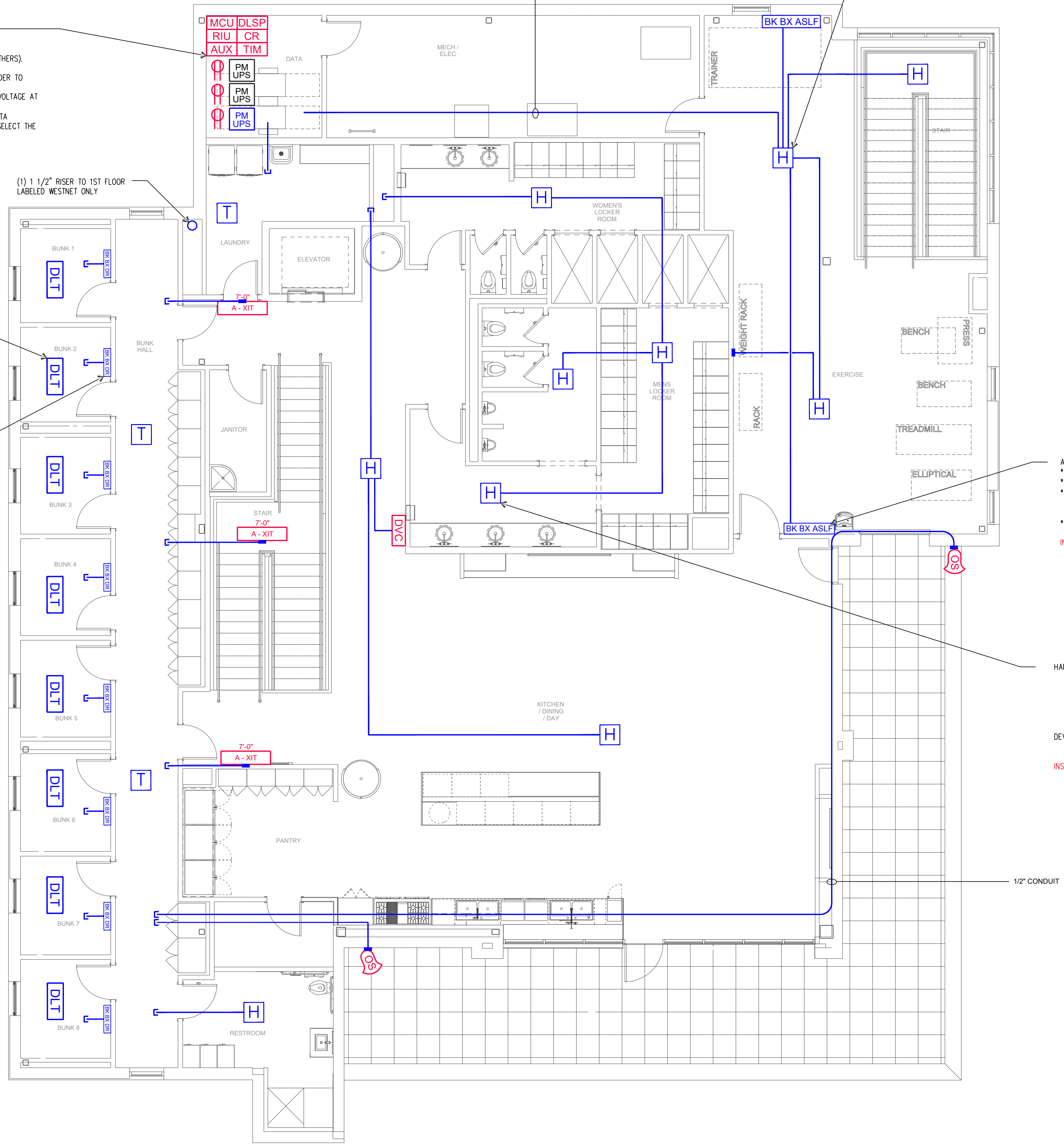
- * LOCATION DETERMINED BY INSTALLER
- * NO BACK BOX REQUIRED
- * MOUNTED IN CENTER OF ROOM AT FOOT OF BED
- * KEEP CLEAR OF CEILING FANS OR OBSTRUCTIONS (TYPICAL)

DORM REMOTES INSTALLATION

- * 8X10X4 HOFFMAN BACK BOX
- * MOUNTED HORIZONTALLY +48" A.F.F.
- * RECESSED 1/4" BEHIND SHEETROCK FACE
- * 3/4" CONDUIT TO ACCESSIBLE CEILING (TYPICAL)

- * ALLOW MIN +6" FROM ALL EDGES OF BOX OPENING TO KEEP CLEAR OF SWITCHES, OTHER TRADES, AND OF OVERLAPPING DOOR FRAME.

(1) 1 1/2" RISER TO 1ST FLOOR
LABELED WESTNET ONLY



OPEN CEILING APPLICATION:

- * WESTNET 8X10X4 HOFFMAN BACKBOX SURFACED MOUNTED AT 10' A.F.F. MAX. INSTALLED WITH OPEN FACE DOWN PENDANT MOUNTING MAY BE REQUIRED
- * VISIBLE FROM ALL AREAS IN ROOM
- * ALERTING SYSTEM DEVICE TO BE CLEAR OF OBSTRUCTIONS (TYPICAL)

INSTALLERS TO FIELD VERIFY LOCATION OF THE DEVICES.

ALERTING STROBE LIGHT:

- * CUSTOM BACK BOX FROM WESTNET
- * MOUNT VERTICALLY AT +6'-0" A.F.F. TO BOTTOM
- * 1" CONDUIT TO ALERTING STROBE ADAPTER ALERTING STROBE ADAPTER MOUNTED AT +8'-0" -10'-0" AFF IN ACCESSIBLE AREA
- * KEEP CLEAR OF OBSTRUCTIONS. (TYPICAL)

INSTALLER TO FIELD VERIFY A.F.F. HEIGHT & LOCATION

HARD LID CEILING APPLICATION:

- * 8X10X4 HOFFMAN BACKBOX MOUNTED IN SHEETROCK CEILING RECESSED 1/4" BEHIND SHEETROCK FACE
- * 3/4" CONDUIT TO NEXT DEVICE KEEP CLEAR OF OBSTRUCTIONS (TYPICAL).

DEVICES MUST BE VISIBLE FROM INSIDE SHOWERS (TYPICAL).

INSTALLERS TO FIELD VERIFY LOCATION OF THE DEVICES.

FIRST-IN FIRE STATION ALERTING	
SYMBOL LEGEND	
	MASTER CONTROL UNIT
	DATA LINE SURGE PROTECTOR
	TELEPHONE INTERFACE MODULE
	CONTROL REMOTE
	RADIO ISOLATION UNIT
	AUXILIARY MODULE
	POWER MODULE WITH UPS-BLACK (DEDICATED 120V CIRCUIT REQUIRED, INDIVIDUAL BREAKER RECOMMENDED)
	POWER MODULE WITH UPS-BLUE (DEDICATED 120V CIRCUIT REQUIRED, INDIVIDUAL BREAKER RECOMMENDED)
	HIGH-POWERED AMPLIFIED SPEAKER IN CONJUNCTION WITH
	OUTSIDE SPEAKER - IN CONJUNCTION WITH
	CUSTOM BACKBOX PROVIDED BY WESTNET
	DORM REMOTE BACKBOX PROVIDED WESTNET
	DORM LITE ACOUSTIC CEILING MOUNT KIT
	8x10x4 HOFFMAN BACKBOX
	ACOUSTIC CEILING KIT
	LOCATION OF DEVICE WALL MOUNTED

- ### GENERAL NOTES
1. DEVICES ARE TYPICAL AND FOR REFERENCE ONLY.
 2. ALL BACK BOXES & CONDUITS ARE TO BE FLUSH MOUNTED UNLESS OTHERWISE SPECIFIED FOR NEW CONSTRUCTION.
 3. DEVICES LOCATED IN ACOUSTICAL CEILINGS DO NOT REQUIRE BACKBOXES
 4. DEVICES LOCATED IN ACOUSTICAL CEILINGS REQUIRE ACOUSTICAL WESTNET MOUNTING KIT (SSATKIT-A)
 5. DEVICES ONLY LOCATED IN SHEETROCK OR EXPOSED CEILINGS REQUIRE HOFFMAN BRAND 8X10X4 BACKBOX
 6. DEVICES ONLY LOCATED IN SHEETROCK OR EXPOSED CEILINGS REQUIRE APPROPRIATE WESTNET MOUNTING KIT (SURFACE MOUNT OR FLUSH MOUNT) FOR NEW CONSTRUCTION.
 7. LOCATIONS OF DEVICES DETERMINED AT INSTALLATION BY INSTALLER FOR NEW CONSTRUCTION.
 8. SEE ARCHITECTURAL SPECIFICATION FOR ALL ROUGH-IN AND INSTALLATION DETAILS FOR NEW CONSTRUCTION.
 9. INSTALLER TO VERIFY WALL AND CEILING TYPE TO DETERMINE NEED FOR FLUSH OR SURFACE MOUNT INSTALLATION OF EQUIPMENT SPECIFIED FOR NEW CONSTRUCTION.
 10. ALL WIRING AND DEVICES TO BE INSTALLED BY WESTNET.
 11. ALL PENETRATION TO EXTERIOR DEVICES MUST BE WEATHERPROOF AND FIRE CAULKED FOR CONSTRUCTION BY OTHERS.
 12. DEVICES LOCATED IN BATHROOM/SHOWER AREAS MUST BE VISIBLE FROM SHOWERS. INSTALLER TO FIELD VERIFY DEVICE LOCATION. (TYPICAL)
 13. ALL DEVICES MUST BE KEPT CLEAR OF OBSTRUCTIONS & CEILING FAN BLADES.
 14. IN ACOUSTICAL CEILING (T-BAR), WIRE CABLING IS FREE WIRE (NOT IN CONDUIT).
 15. IN GYPSUM BOARD CEILING (SHEET ROCK / HARD LID), WIRE CABLING IN IN 3/4" CONDUIT UNLESS CONDUIT SIZE OTHERWISE NOTED.
 16. IN EXPOSED AREAS ONLY 8X10X4 HOFFMAN BACK BOX MOUNTED AT +10'-0" A.F.F. MAX. WITH OPEN FACE DOWN IN CENTER OF ROOM WITH 3/4" CONDUIT TO ACCESSIBLE CEILING SPACE, KEEP CLEAR OF OBSTRUCTIONS.
 17. A 5 OHM EARTH GROUND MUST BE CONNECTED TO THE RADIO ISOLATION UNIT IN THE COMMUNICATION RACK.
 18. THE RADIO RECEIVING THE DISPATCH INFORMATION SHALL BE LOCATED WITHIN 6'-0" FT. OF THE RADIO ISOLATION UNIT.
 19. INSTALLER TO PROVIDE ONE ADDITIONAL UNCONNECTED BLUE CAT5 CABLE WITH RJ45 CONNECTORS ON BOTH ENDS BETWEEN THE MCU LOCATION AND EACH ALERTING END POINT FOR NETWORK CONNECTIVITY.
 20. BUTTONS AND SWITCHES
 - * 4 SQUARE DEEP SINGLE GANG RING BOX
 - * MOUNTED +48" A.F.F.
 - * 6" - 12" FROM DOOR FRAME
 - * 3/4" CONDUIT STUB UP ABOVE CEILING TO ACCESSIBLE CEILING SPACE.
 - * KEEP CLEAR OF OBSTRUCTIONS (TYPICAL)

WESTNET/FIRST IN SYSTEM LAYOUT REVIEW	
PROJECT: OLATHE FIRE STATION # 9	
DEPARTMENT: OLATHE, KS	
DATE SUBMITTED:	
<input type="checkbox"/> Approved subject to notations and corrections as indicated. <input type="checkbox"/> Re-submit corrected Layout for our approval. <input type="checkbox"/> Re-submittal of Layout not required.	
<input type="checkbox"/> Rejected/Re-submit Layout Remarks: _____	
DATE RETURNED:	
REVIEWED BY: _____	
DEPT TITLE: _____	
This serves to Certify that this Layout submittal(s) have been reviewed for accuracy and compliance with the general conformance of the design and layout(s) with the Department Contract and/or Contract Documents. ONLY AFTER APPROVAL OF LAYOUT WILL SUBMITTAL INFORMATION AND QUOTES BE AVAILABLE	
Westnet, LLC. 15542 Chemical Lane Huntington Beach, CA 92649	Phone: (714) 548-3500 Fax: (714) 901-5610 www.FirstInAlerting.com

15542 CHEMICAL LANE
HUNTINGTON BEACH, CA 92649
TEL: (714) 548-3500 FAX: (714) 901-5610
www.FirstInAlerting.com

COPYRIGHT 2022
WESTNET LLC.
ALL RIGHTS RESERVED

BY	
DATE	
REVISION	
REV	

ALERT SYSTEM

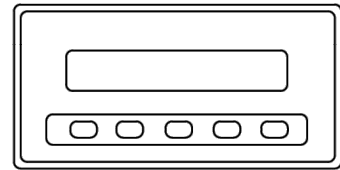
OLATHE
FIRE STATION # 9
COLLEGE BLVD & S. CRESTONE,
OLATHE, KS

PROJECT NAME:

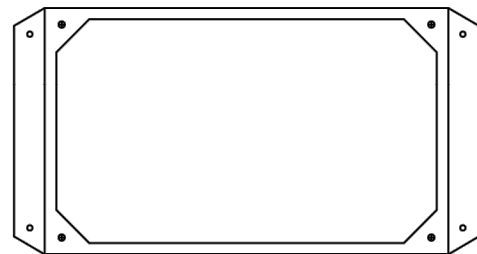
NOTE:
IF THIS SCALE IS NOT 1" = 1'
THIS SHEET IS NOT TO SCALE

DATE: 12/11/2024
DRAWN BY: EV
SCALE: N.T.S.
TITLE: 2ND FLOOR CONDUIT PLAN
SHEET

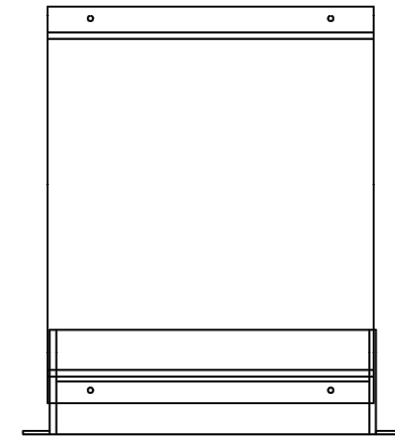
AS3.2



01 MASTER CONTROL UNIT - MCU
N.T.S.
RE: WESTNET SPECIFICATIONS FOR OVERALL DEVICE DIMENSIONS.



02 CONTROL REMOTE - CR
N.T.S.
RE: WESTNET SPECIFICATIONS FOR OVERALL DEVICE DIMENSIONS.



03 STATION PAGING MODULE - PAG
N.T.S.
RE: WESTNET SPECIFICATIONS FOR OVERALL DEVICE DIMENSIONS.

MCU MASTER CONTROL UNIT

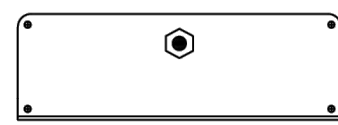
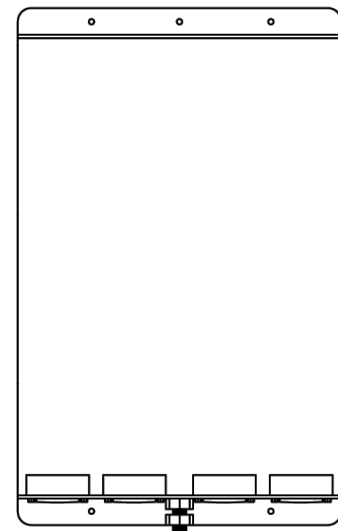
- THE MASTER CONTROL UNIT IS THE COMMAND CENTER OF THE SMART STATION NETWORK.
- THE MASTER CONTROL UNIT SHALL ACCEPT ALARM INPUTS FROM UP TO (4) RADIOS, DEDICATED PHONE LINES, POTS TELEPHONE LINES, SERIAL DATA LINES, AS WELL AS TOP/VP ETHERNET NETWORKS.
- THE MASTER CONTROL UNIT SUPPORTS THE FULL 2IR COMMAND SET.
- THE MASTER CONTROL UNIT SHALL MEET THE NFPA REQUIREMENT 1221 FOR SUPERVISED COMMUNICATIONS FOR ALERTING WITH THE DISPATCH CENTER.
- ALARM AUDIO LEVELS SHALL BE CONTROLLABLE OVER A (30) DECIBAL RANGE IN (1) DECIBAL INCREMENTS.
- RADIO AUDIO LEVELS SHALL BE CONTROLLABLE OVER A (30) DECIBAL RANGE IN (1) DECIBAL INCREMENTS.
- THE ENTIRE FIRE STATION ALERTING LEVEL SHALL BE AUTOMATICALLY REDUCED AT NIGHT AND RETURNED TO NORMAL LEVELS IN THE MORNING AUTOMATICALLY.
- OUTSIDE SPEAKERS SHALL BE AUTOMATICALLY TURNED OFF AT NIGHT AND TURNED BACK ON IN THE MORNING AUTOMATICALLY.
- PRIMARY PROGRAMMING SHALL BE ACCOMPLISHED FROM THE FRONT PANEL, WHILE SECONDARY PROGRAMMING IS ACCOMPLISHED WITH THE SMART STATION SERVICE VIA COMPUTER.
- FRONT PANEL PROGRAMMING SHALL BE LIMITED TO PLACING THE STATION ON RADIO WATCH OR REMOVING THE STATION FROM RADIO WATCH.
- THE MASTER CONTROL UNIT SHALL BE POWERED FROM AN "ON-LINE" UPS FOR UNINTERRUPTIBLE ALERTING SERVICE.

CR CONTROL REMOTE

- WHEN THE ALARM SYSTEM TRIGGERS, THE CONTROL REMOTE CAN OPEN BAY DOORS, TURN ON BAY LIGHTS, OPEN GATES, AND/OR SENSE INPUTS FROM CO DETECTORS IN APPARATUS BAYS.
- PROVIDES (8), DOUBLE POLE, DOUBLE THROW (DPDT) RELAYS UNDER SOFTWARE CONTROL OF THE MASTER CONTROL UNIT.
- PROVIDE (4) REMOTE SENSING INPUTS TO COLLECT DATA RELEVANT TO THE CONTROL FUNCTIONS.
- ENABLES THE MASTER CONTROL UNIT TO OPERATE FIRE STATION ALERTING EQUIPMENT THAT IS NOT SMART STATION COMPATIBLE.
- ALL RELAYS SHALL BE ZONE, TIME DELAY AND TIME OF DAY CONTROLLABLE IN ANY COMBINATION NECESSARY.
- SHALL PROVIDE CONTROL AND SENSE CAPABILITY THROUGHOUT THE NETWORK AT ANY LOCATION.
- RELAYS SHALL BE RATED AT (5) AMPS AT (24) VOLTS DC OR AC.
- MECHANICAL LIFE OF THE RELAY CONTACTS SHALL BE A MINIMUM OF (5) MILLION OPERATIONS.
- RELAYS SHALL BE USED TO CONTROL THE OVENRANGES IN THR KITCHEN, OPERATION OF EACH APPARATUS BAY DOOR INDEPENDANTLY, AND CONNECTION OF CARBON MONOXIDE SENSORS TO THE SYSTEM. COORDINATE ALL ELECTRICAL CONTACTS AND RELAYS REQUIRED FOR LINE VOLTAGE ORCUTS TO INTERFACE WITH CONTROL REMOTE DEVICES.
- WESTNET ALERT SYSTEM PROVIDES ONLY DRY CONTACTS RATED AT 24 VOLTS MAX., NO VOLTAGE IS SUPPLIED

TIM TELEPHONE INTERFACE MODULE

- SHALL BE UTILIZED FOR PAGING PERSONNEL WITHIN THE FIRE STATION.
- SHALL INTEGRATE THE FIRE STATION TELEPHONE SYSTEM INTO ALL AUDIO UNITS, SUCH AS COMBINATION SPEAKER/LED LIGHT DEVICES, PROGRAMMABLE SPEAKER/RED GLOW LIGHT DEVICES AND HIGH POWER AMPLIFIERS.
- REQUIRES CONDUIT SLEEVE TO STATION TELE/COMM ROOM



04 RADIO ISOLATION UNIT - RIU
N.T.S.
RE: WESTNET SPECIFICATIONS FOR OVERALL DEVICE DIMENSIONS.

RIU RADIO ISOLATION UNIT

- SURGE PROTECTION DEVICE CONNECTED TO RADIO ANTENNAS EXTEND GROUND WIRE FROM UNIT TO LIGHTING PROTECTION SYSTEM.

ALERTING SYSTEM OVERVIEW PLEASE READ

Most contractors are unfamiliar with what the Alerting System is and the capabilities of the system. The overall function of the alerting system is to reduce the response time of the received calls from 15 to 45 seconds using visual and audio alerts for dispatched units. This system is installed as a large communication loop utilizing CAT 5 cabling with very limited connections to the existing building.

There are several common questions that are generally asked during the rough in stages for our system:

Does the back box specified need to be a Hoffman Brand - Part #43050 - Cat #A-SE8X10X4 for Dorm Remotes (DR) and Satellite Controllers (SC)? YES, the mounting flanges for these devices specifically made for this type of box. This eliminates re-tapping of the box and quicker installation time.

Can power receptacles be relocated? YES, at a maximum of six (6) feet from plan indication.

Can conduit differ from plans? NO, the routing of the conduit is very specific and is the link from device to device creating the over all communication loop.

There is a spacing conflict with the Dorm Remote (DR), Thermostat, Light Switch, and Telephone location next to the door jamb. Can this be relocated? YES, this can be moved away from the door jamb, generally between the light switch and thermostat is most common, for the occupants to monitor their dispatched calls. Refer to notes on AS.01. The mounting flange will require 18" space between light switch and next device for the horizontally mounted Hoffman back box.

Can devices be relocated? YES, but at a maximum of six (6) feet. Please keep in mind of equal spacing of devices for an even audio and visual coverage; this is important when announcing dispatched calls. Also, the cabling is pre-manufactured and is designated for that device. Relocation of devices at more than six (6) feet from indicated location will need approval by Westnet.

How is the Hoffman Brand - Part #43050 - Cat #A-SE8X10X4 boxes to be mounted? For Dorm Remotes (DR), the back box is to mount horizontally, 10" wide and 8" tall, recessed 1/8" into the sheetrock wall, at 48" to centerline, above finished floor. The mounting flange covers the back box opening and pulls flush against the sheetrock.

For Satellite Controllers (SC), that is to be mounted into sheetrock ceilings, the back box will run, the 10" side, with the length of the room, in the center, free from obstructions, avoiding other trades, recessed 1/8" into sheetrock, and mounted at a maximum of 15' above finished floor. Back boxes installed in open areas will be mounted at a maximum of 15' above finished surface, free from obstructions, avoiding other trades, recessed 1/8" into sheetrock, and mounted at a maximum of 15' above finished floor. Back boxes installed in open areas will be mounted at a maximum of 15' above finished surface, free from obstructions, with length of room, and visible from all points in the rooms. Westnet does not assume the responsibility for poor installation of back boxes. Refer to notes on AS.01.

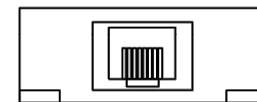
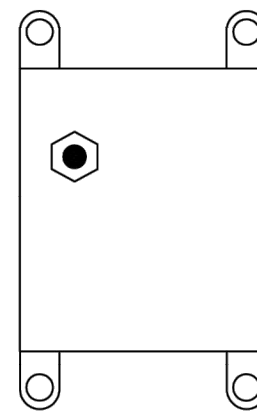
What is the function of the Control Remote (CR)? This device can perform multiple functions, opening apparatus bay doors, gates, corridor lighting, etc.

Any equipment that shows to be connected that are to be controlled by the CR will need a control voltage of 24 Volts that is NOT supplied by Westnet. The terminal rating is a maximum of 24V on the CR.

What is the MCU? This is the brains of the system. Received calls go thru this device and are announced throughout the system. This is most commonly the only connection that is made to the existing communications. This is to be located within six (6) feet of the dispatch radio in watch room or communication center of station.

These are just a few of the issues that you may have questions about. There is to be no alteration of the system without the approval of Westnet.

If there are more questions or concerns about the rough in for installation, please call 1-800-807-1700



DLSP DATA LINE SURGE SUPPRESSOR

- SHALL BE UTILIZED FOR SURGE PROTECTION OF THE LAN FEED FROM SWITCH
- SHALL BE GROUNDED TO 5 OHM GROUND PLATE
- SHALL BE LOCATED WITHIN 6 FEET OF MCU

PROJECT NAME:

NOTE:
IF THIS SCALE IS NOT 1"
THIS SHEET IS NOT TO SCALE

DATE: 12/11/2024
DRAWN BY: EV
SCALE: N.T.S.
TITLE: DEVICE DETAILS
SHEET

AS4.1

ALERT
SYSTEM

OLATHE
FIRE STATION # 9
COLLEGE BLVD & S. CRESTONE,
OLATHE, KS

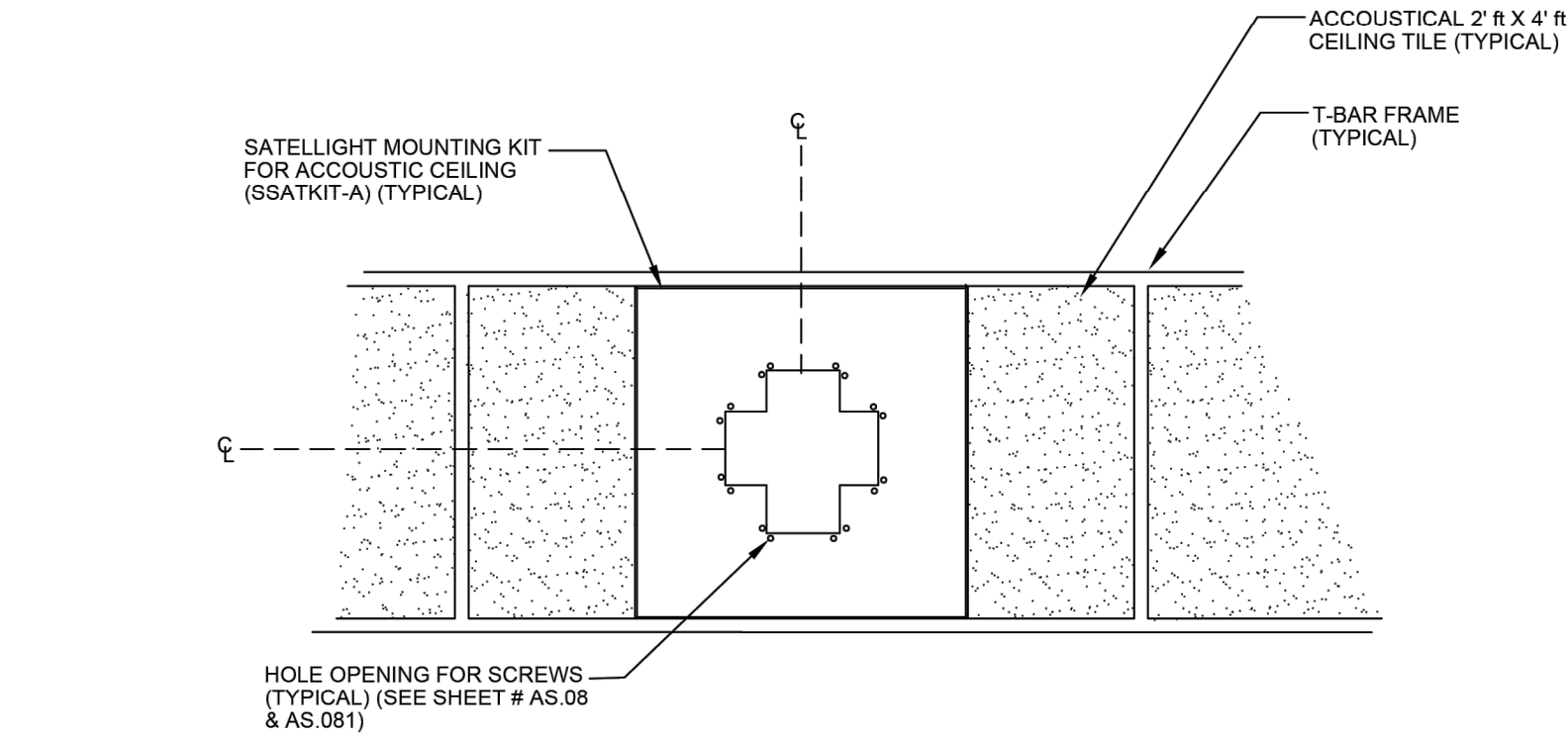


COPYRIGHT 2022
WESTNET LLC.
ALL RIGHTS RESERVED

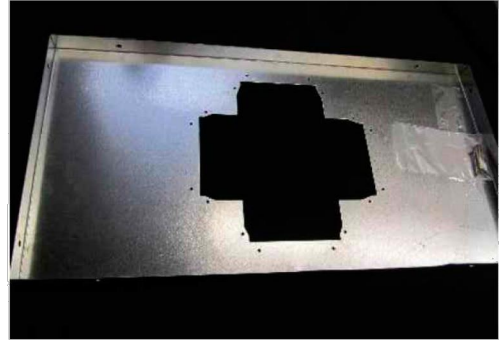
REV	REVISION	DATE	BY



WESTNET®
15542 CHEMICAL LANE
HUNTINGTON BEACH, CA 92649
TEL: (714) 548-3500 FAX: (714) 901-5610
www.FirstInAlerting.com

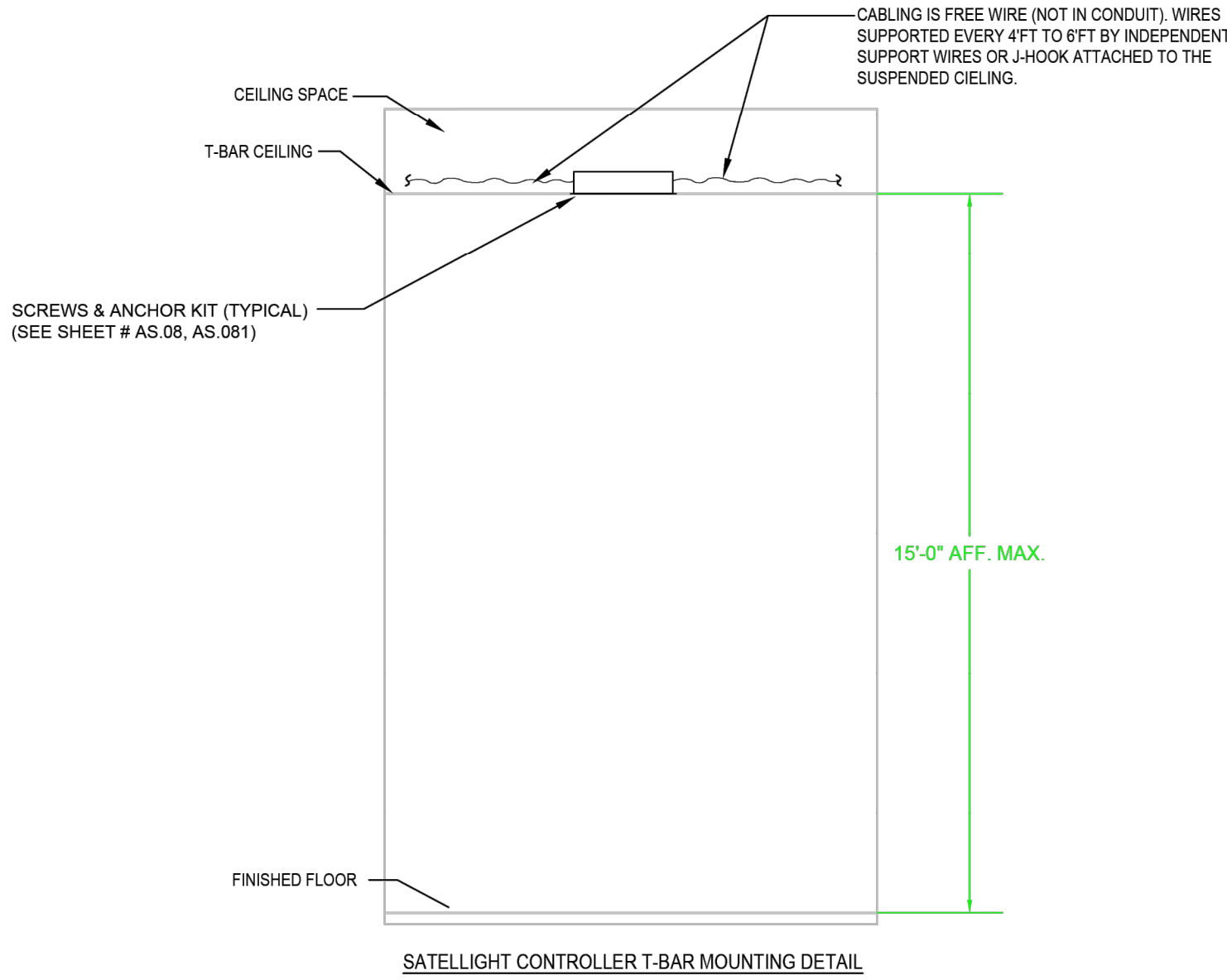


ID 929 SSATKIT-A Satellight Mounting Kit - Acoustic Ceiling (A-Kit)

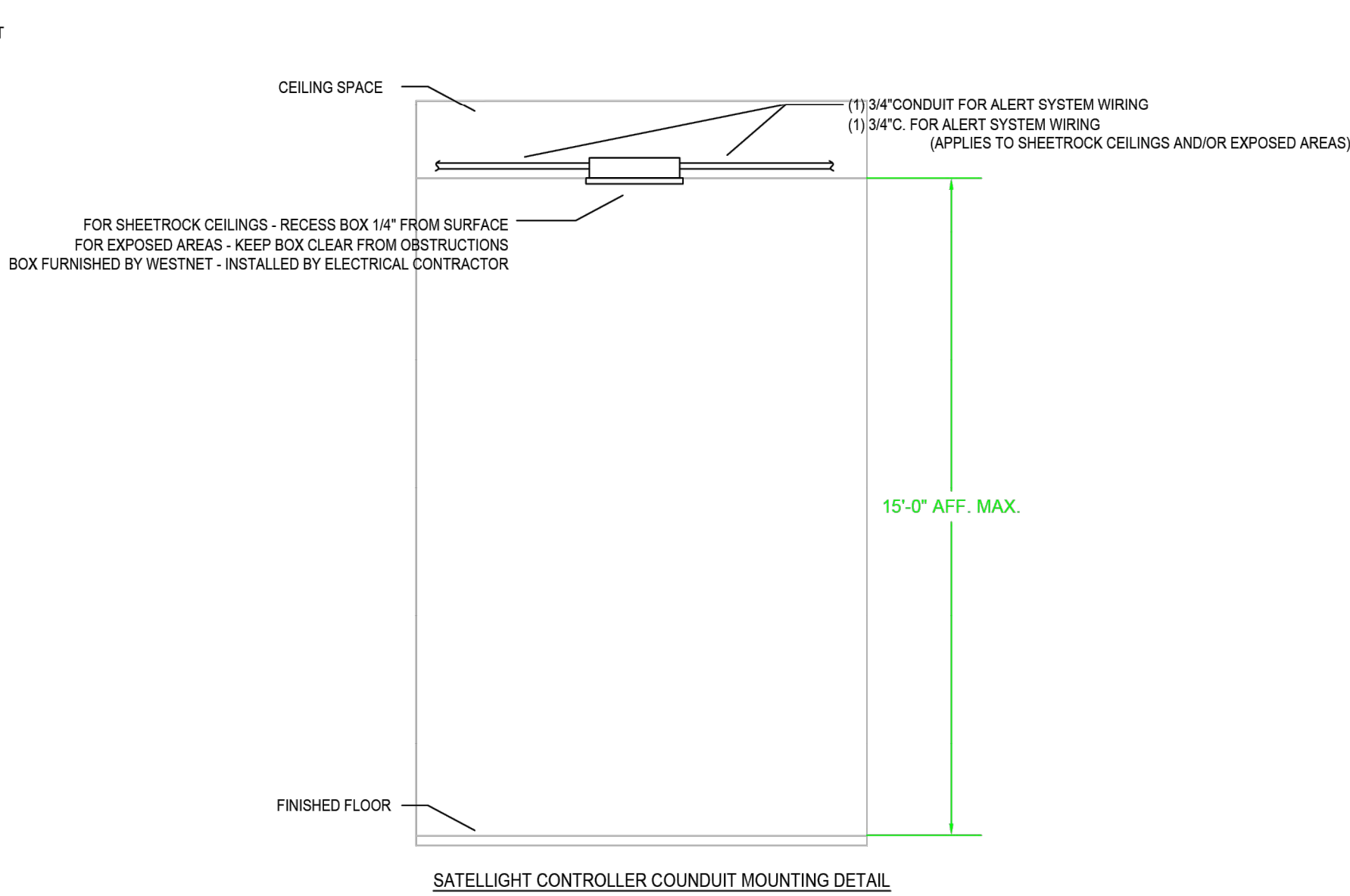


Note:
Kit used for mounting on drop-tile ceilings. Compatible products include:
1. Satellight Controllers 2. Satellights 3. Dorm lights

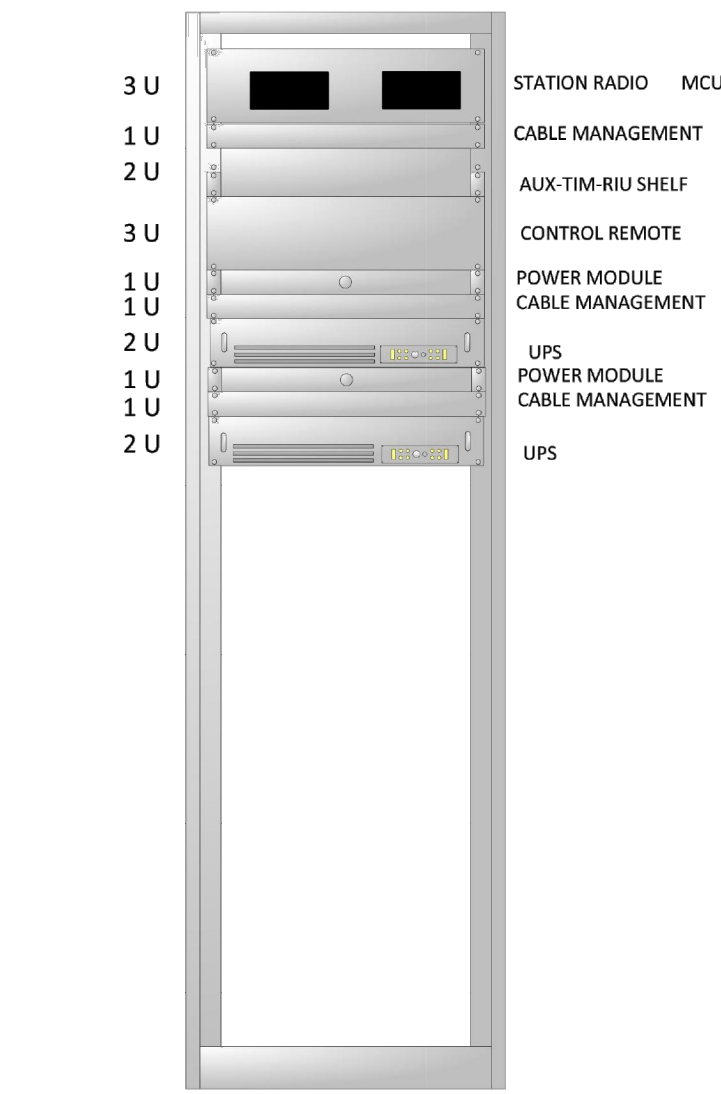
03 TYPICAL T-BAR PANEL INSTALLATION
N.T.S.



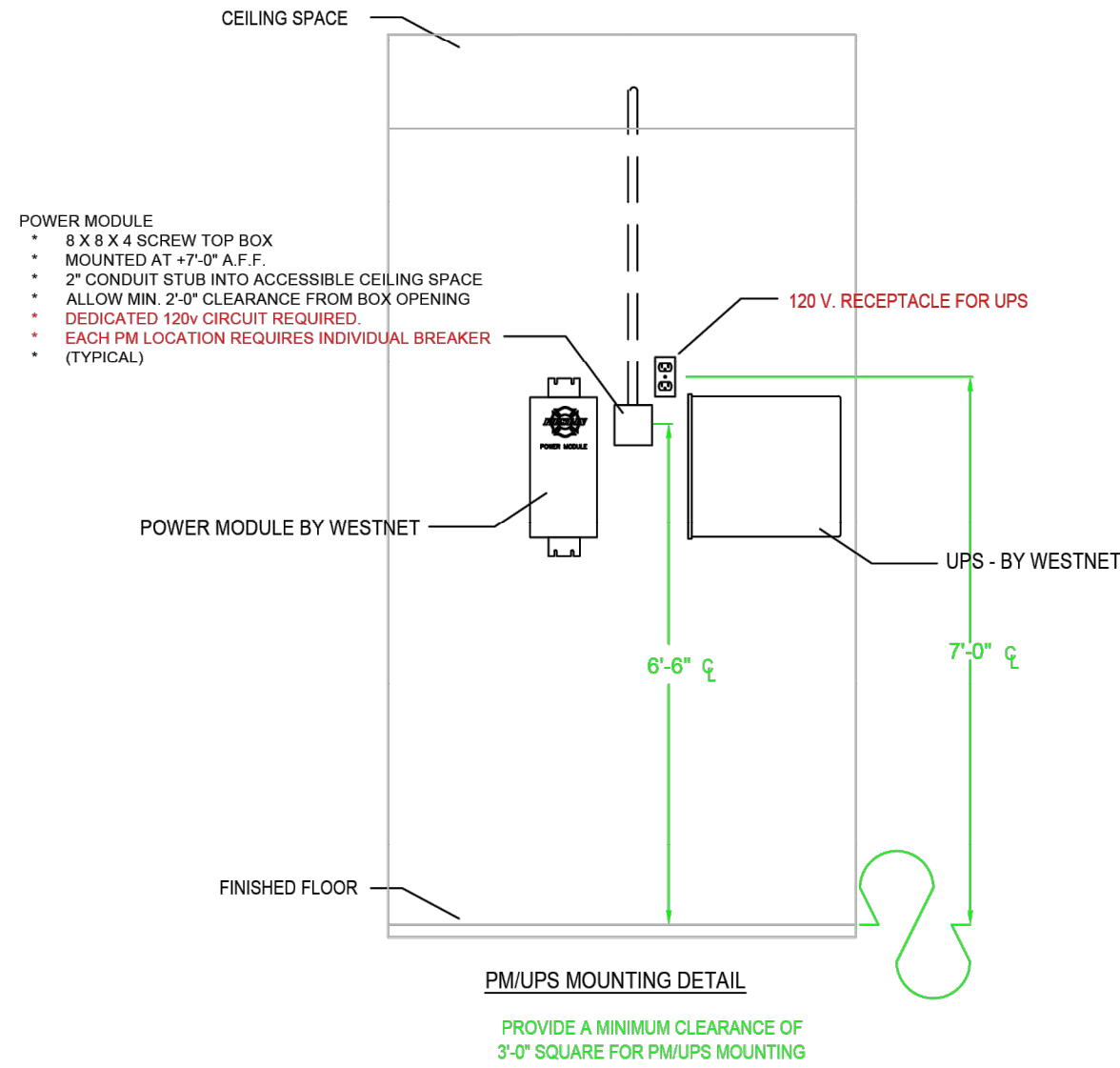
SATELLIGHT CONTROLLER T-BAR MOUNTING DETAIL



SATELLIGHT CONTROLLER CONDUIT MOUNTING DETAIL



01 TYPICAL LAYOUT
N.T.S. RACK PROVIDED BY OTHERS



PM UPS POWER MODULE AND UPS

- POWER MODULES SHALL SUPPLY THE SMART STATION CAT 5 PRIMARY ALARM NETWORK WITH 24 VOLTS DC OUTPUT.
- THE POWER MODULE SHALL BE CENTERED TO THE FIRE STATION RADIO, THE PRINTER, MASTER CONTROL UNIT, AND THE DATA TERMINAL CONTROL UNIT IF THE FIRE STATION IS ETHERNET DISPATCHED.
- SHALL SUPPLY SYNTHESIZED 110-VAC POWER THAT IS PROTECTED FROM THE POWER GRID BY AN ON-LINE CONVERTER.
- SHALL SENSE POWER LOSS AND NOTIFY THE MASTER CONTROL UNIT OF ANY OUTAGE.
- LED STATUS INDICATORS SHALL SHOW FIRE PERSONEL THE MODULE POWER STATUS.
- STANDARD AGC POWER FUSES SHALL BE CHANGEABLE BY FIRE STATION PERSONNEL.
- EACH POWER SUPPLY SHALL BE ACCOMPANIED BY AN UNINTERRUPTIBLE POWER SUPPLY WITH CAPACITY TO RUN THE SYSTEM AT FULL OPERATION FOR (60) MINUTES.

SC SATELLIGHT CONTROLLER

KSC KNIGHT LITE SATELLIGHT CONTROLLER

- SHALL OPERATE ON A CAT 5 SMART STATION PRIMARY ALARM NETWORK, WHICH IS DRIVEN FROM THE MCU.
- OPERATE INDEPENDENTLY OR DRIVE UP TO (3) OR (4) DEVICES DEPENDING UPON THE LOCATION IN THE FIRE STATION.
- AUDIO OUTPUT SHALL BE CONTROLLED BY SOFTWARE FROM THE MASTER CONTROL UNIT.
- AUDIO OUTPUT SHALL BE ADJUSTABLE ACROSS A (90) DECIBEL RANGE.
- SHALL BE CAPABLE OF INTELLENT SENSING AND CONTROL OF FIRE STATION SYSTEMS AND EQUIPMENT. CONTROLLER SHALL UTILIZE BI-DIRECTIONAL DATA THROUGHOUT THE SMART STATION NETWORK AND EXTEND CAPABILITY TO THE FIRE DEPARTMENT DISPATCH CENTER.
- SHALL BE MOUNTED IN THE CEILING TO PROVIDE ALARM COVERAGE THROUGHOUT THE STATION.
- ACOUSTICAL CEILING MOUNTING SECURES THE DEVICE TO THE T-BAR RAILS AND THE SUPERSTRUCTURE OF THE BUILDING.
- DRYWALL AND PLASTER CEILING MOUNTING HARDWARE SHALL UTILIZE METAL HARDWARE THAT IS COLOR-MATCHED TO THE LAMP ASSEMBLY.

S SATELLIGHT, SPEAKER/LED LIGHT

KS KNIGHT LITE SATELLIGHT, SPEAKER/LED LIGHT

- SHALL OPERATE ON A CAT 5 ALARM SUBNETWORK, WHICH IS DRIVEN FROM A DEVICE CONTROLLER.
- AUDIO OUTPUT FROM THE DEVICES SHALL BE SET BY THE SOFTWARE FROM THE CONTROLLER.
- AUDIO OUTPUT SHALL BE ADJUSTABLE ACROSS A (90) DECIBEL RANGE.
- THE LIGHTING OUTPUT SHALL INCREASE AUTOMATICALLY DURING THE FIRST FEW SECONDS OF THE ALARM SEQUENCE.
- SHALL BE MOUNTED IN CEILING TO PROVIDE ALARM COVERAGE THROUGHOUT THE STATION.
- ACOUSTICAL CEILING MOUNTING SECURES THE DEVICE TO THE T-BAR RAILS AND THE SUPERSTRUCTURE OF THE BUILDING.
- DRYWALL AND PLASTER CEILING MOUNTING HARDWARE INSTALLS DEVICES INTO THESE CEILINGS.

03 SATELLIGHT CONTROLLER - SC
N.T.S. RE: WESTNET SPECIFICATIONS FOR OVERALL DEVICE DIMENSIONS.
SATELLIGHT SPEAKER - S
N.T.S. RE: WESTNET SPECIFICATIONS FOR OVERALL DEVICE DIMENSIONS.

REV	REVISION	DATE	BY



ALERT
SYSTEM

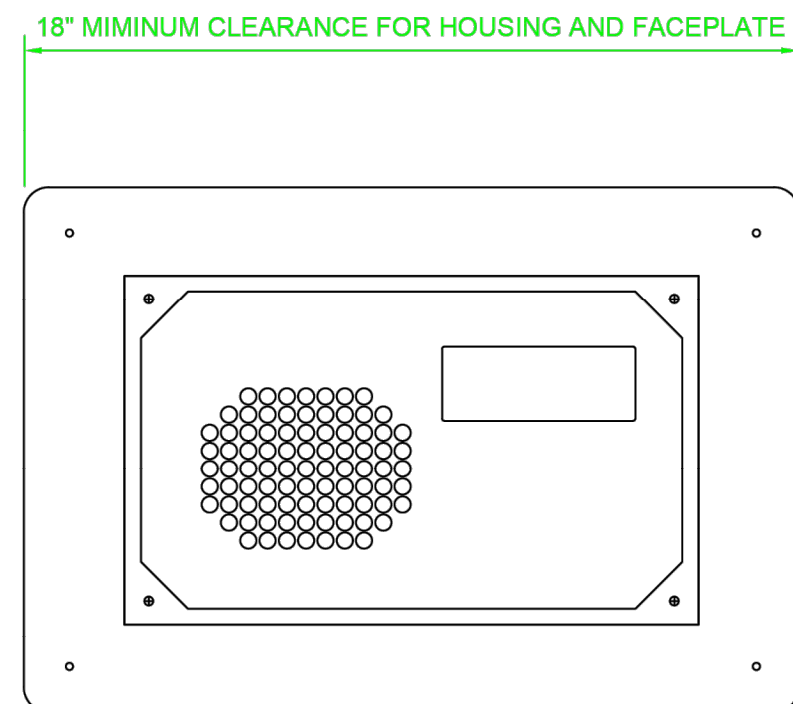
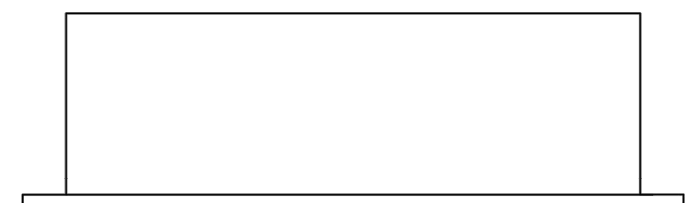
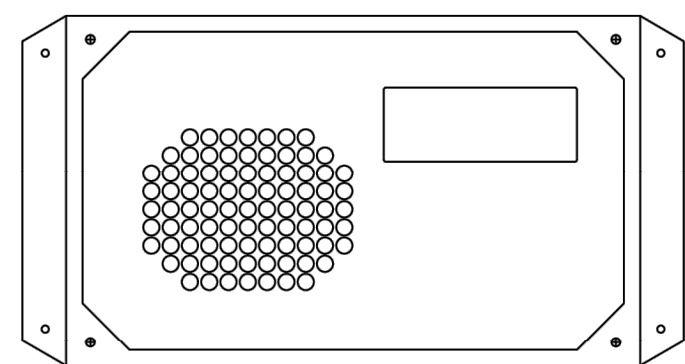
OLATHE
FIRE STATION # 9
COLLEGE BLVD & S. CRESTONE,
OLATHE, KS

PROJECT NAME:

NOTE:
IF THIS SCALE IS NOT 1" = 1'
THIS SHEET IS NOT TO SCALE

DATE: 12/11/2024
DRAWN BY: EV
SCALE: N.T.S.
TITLE: DEVICE DETAILS
SHEET

AS4.2



DORM REMOTE WITH ATTACHED FACEPLATE

RE: WESTNET SPECIFICATIONS FOR OVERALL DEVICE DIMENSIONS.

01 DORM REMOTE - DR

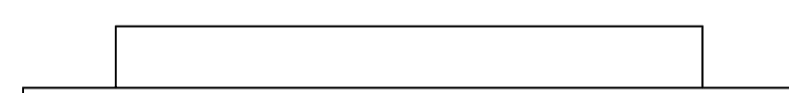
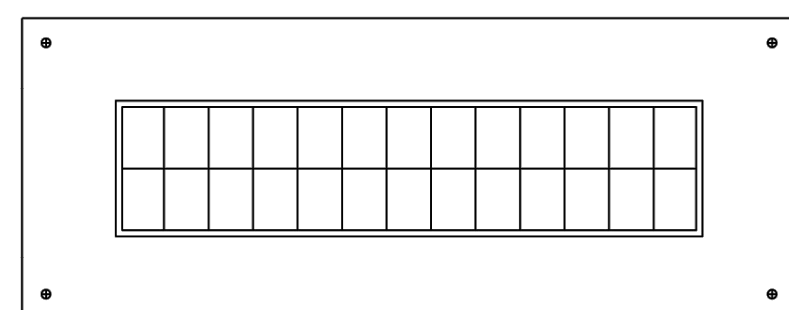
N.T.S.

RE: WESTNET SPECIFICATIONS FOR OVERALL DEVICE DIMENSIONS.

DR

DORM REMOTE WITH LIGHT

- SPEAKER/LIGHT DEVICES SHALL BE FIREFIGHTER PROGRAMMED TO ACTIVATE ON ALL ALARMS STARTING AT SHIFT CHANGE.
- THE DEVICE AUDIO SHALL BE ADJUSTED OVER A (60) DECIBEL RANGE IN (1) DECIBEL INCREMENTS TO AID IN THE REDUCTION OF AUDIBLE SHOCK THAT OCCURS WHEN THE FIREFIGHTER AWAKENS TO AN ALARM.
- THE LIGHTING SHALL INCREASE DURING THE FIRST FEW SECONDS OF THE ALARM SEQUENCE TO REDUCE OPTICAL SHOCK UPON AWAKENING.
- THE LIGHT OUTPUT SHALL BE ADJUSTABLE BY EACH FIREFIGHTER.
- INSTALLED WITH VISIBLE FRONT DISPLAY PANEL AND SPEAKER TOWARD THE SLEEPING AREA.
- MUST BE MOUNTED 2'-0" FROM HEAD OF BED IF LOCATED BY DOOR JAMB AND/OR SWITCHES
- THE TWO-LINE DISPLAY SHALL BE USED FOR DISPLAYING TEXT MESSAGING.
- THE DEVICE SHALL OPERATE UP TO (4) COMBINATION SPEAKER/LED LIGHT DEVICES FOR ZONE CONTROLLED SLEEP AREAS.
- THE DEVICE SHALL BE DESIGNED TO BE WALL OR ROOM DIVIDER MOUNTED AT (2) FEET ABOVE THE HEAD OF THE BED TO PROVIDE ILLUMINATION FOR THE BED AND THE FLOOR.
- THE DEVICE CAN BE SURFACE MOUNTED.
- ALL CONNECTIONS SHALL BE MODULAR PLUGS ENABLING RELOCATION OF DORM REMOTE WITH MINIMUM EFFORT.

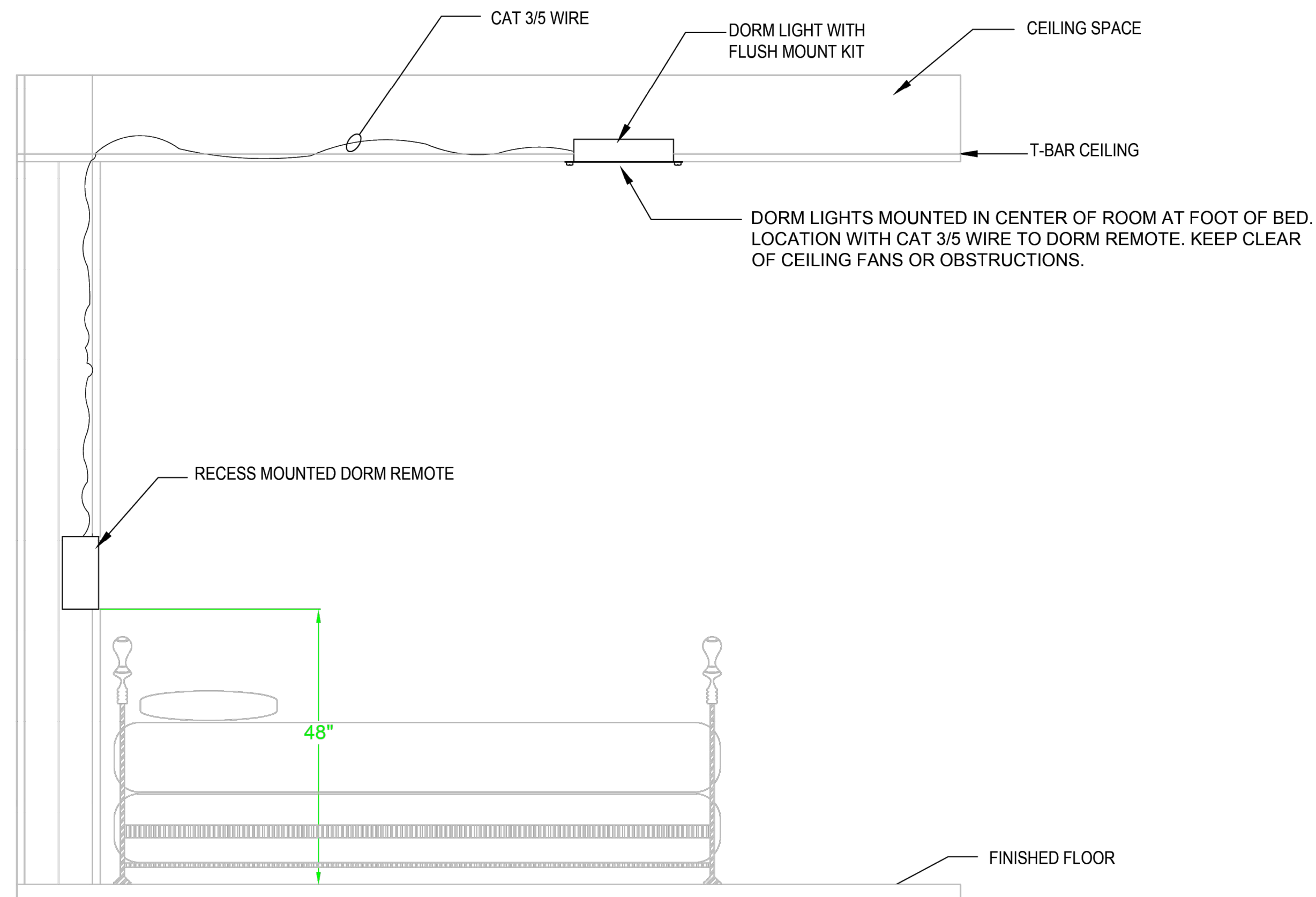


DORM LIGHT - DL

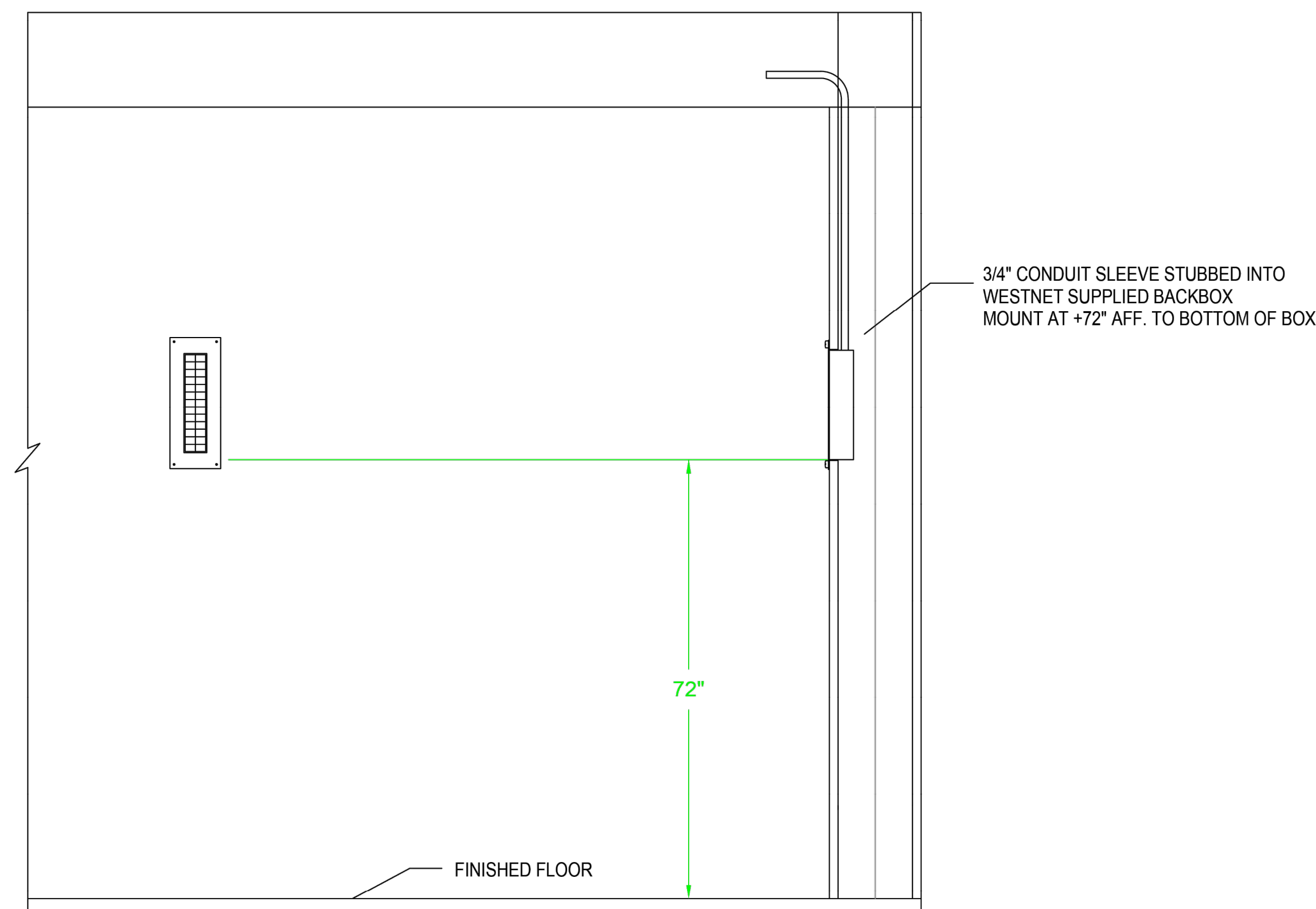
02 FSAS WALL LITE

N.T.S.

RE: WESTNET SPECIFICATIONS FOR OVERALL DEVICE DIMENSIONS.



DORM REMOTE / DORM LIGHT MOUNTING DETAIL



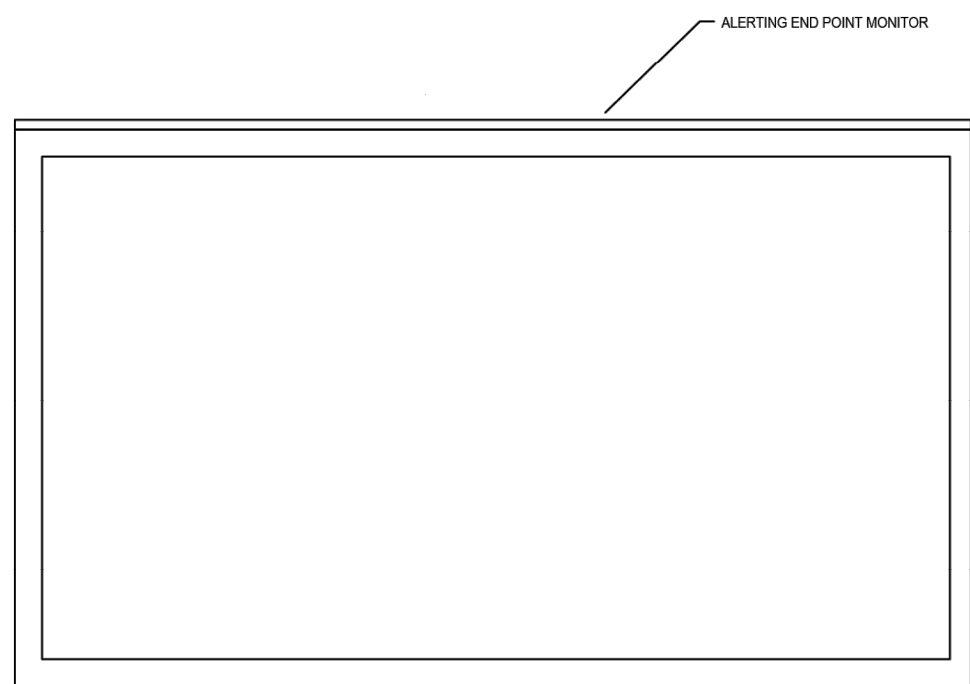
FSAS DORM LIGHT STROBE LAYOUT

REV	REV	DATE	BY

AEP

ALERTING END POINT MONITOR - (SIZE VARIES)

- SHALL BE TEXT AND GRAPHICS IMAGING SIGNS THAT ARE CONTROLLED FROM THE MASTER CONTROL UNIT IN A SMART STATION SYSTEM.
- SHALL BE USED TO DISPLAY THE COMPANIES ASSIGNED TO THE CALL AND ADDITIONAL INFORMATION SUCH AS THE ADDRESS OF THE CALL, HYDRANT OUTAGES NEAR THE CALL OR HAZMAT INFORMATION ASSOCIATED WITH THE ADDRESS OF THE CALL.
- CHARACTER PANELS SHALL UTILIZE (3) COLOR EMITTERS ENABLING A TOTAL OF (8) SHADES OF MESSAGES.
- SHALL BE DRIVEN BY THE SMART STATION CAT 6 NETWORK.
- SHALL DISPLAY BLERT, CONFIDENTIAL MESSAGES RECEIVED FROM THE MCU RESPONDING TO A MESSAGE ZONE COMMAND.
- SHALL PROVIDE ALERTING INFORMATION THAT IS TOTALLY IMMUNE FROM HIGH NOISE LEVELS OF APPARATUS ROOMS AND AIRCRAFT FACILITIES.
- REQUIRES 120V RECEPTACLE
- SIZE DETERMINED BY INSTALLER

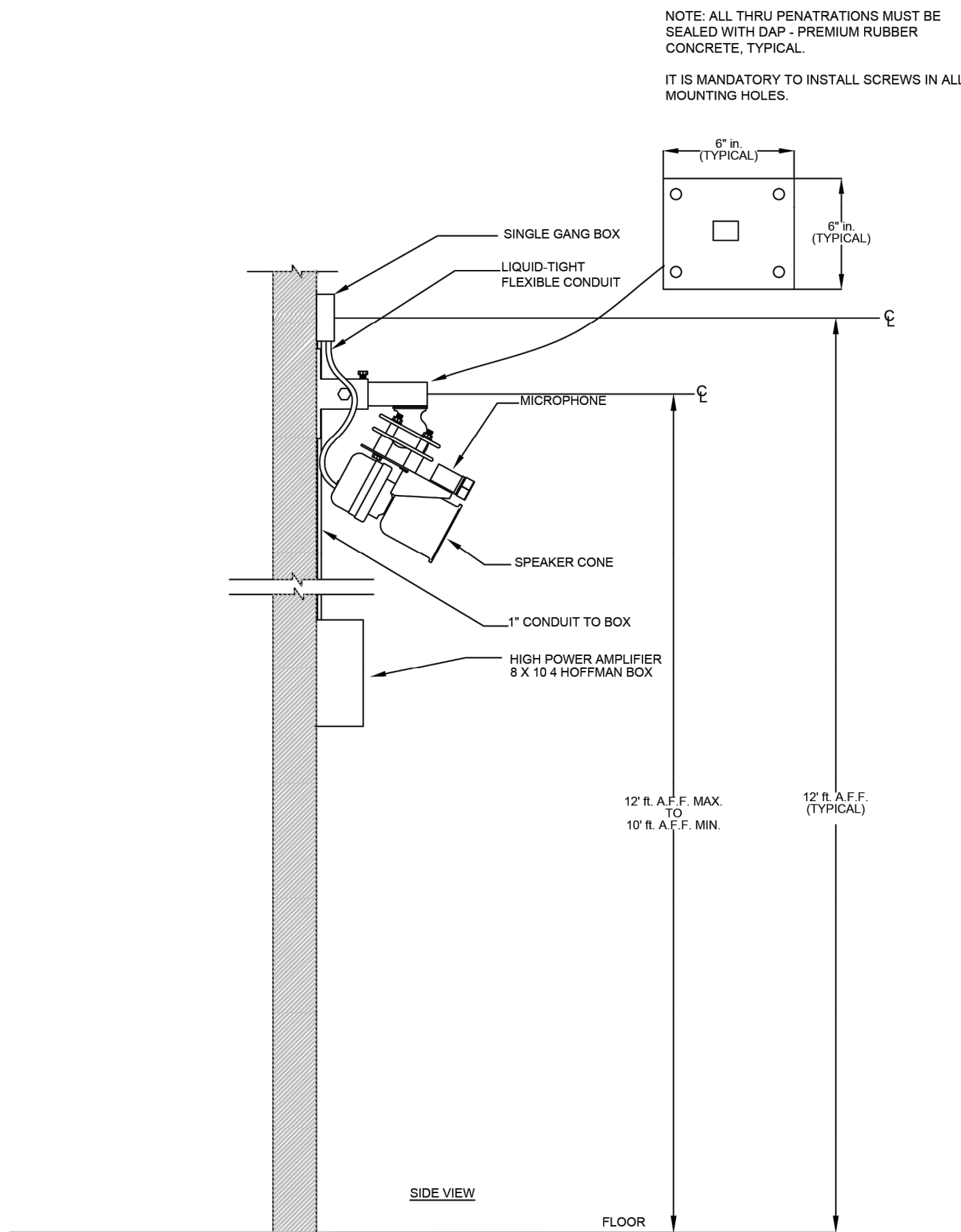


ALERTING END POINT - TOUCH SCREEN

01

ALERTING END POINT MONITOR

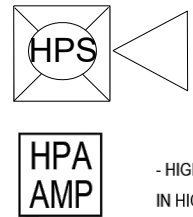
N.T.S.
RE: WESTNET SPECIFICATIONS FOR OVERALL DEVICE DIMENSIONS.



01

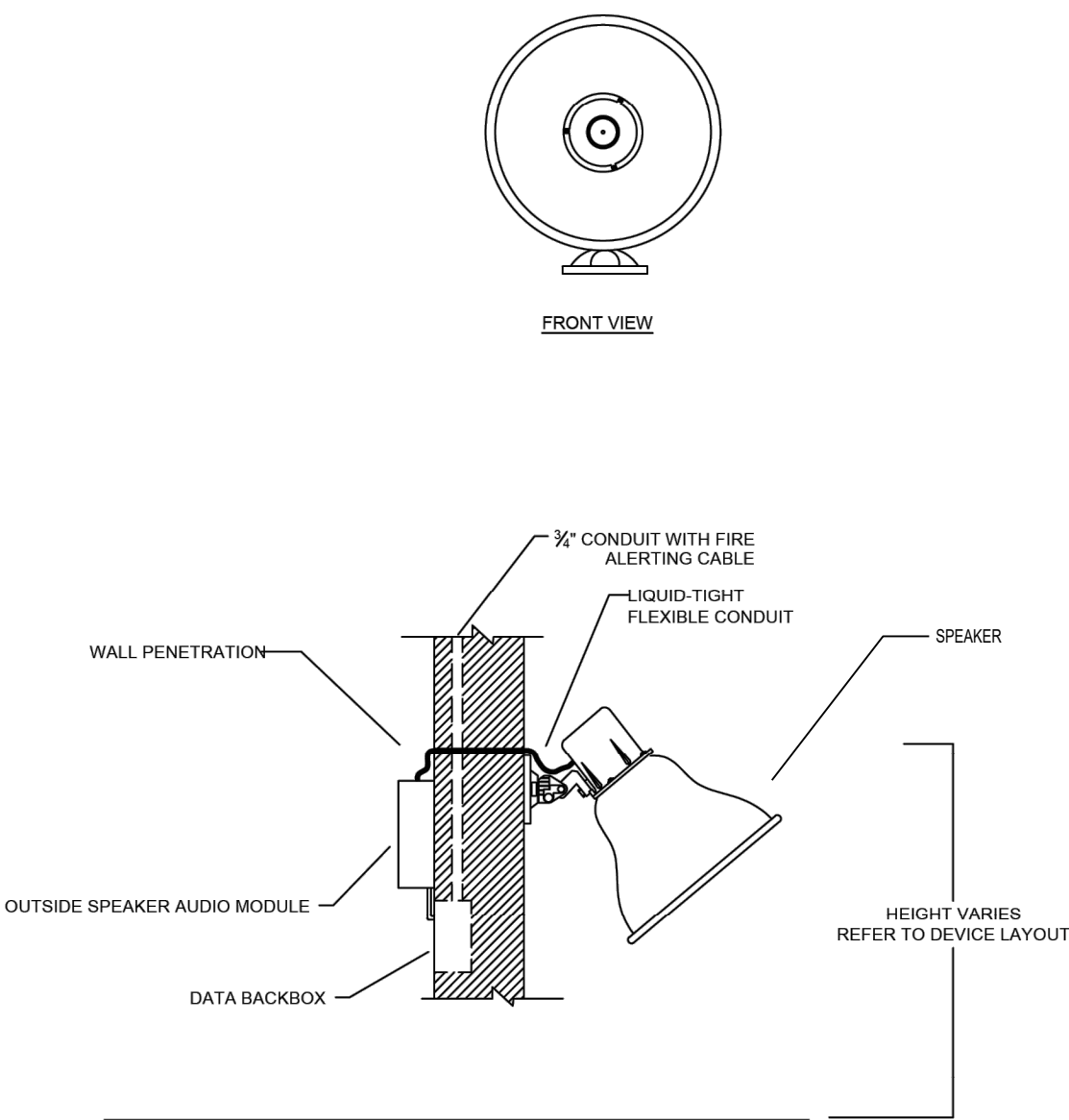
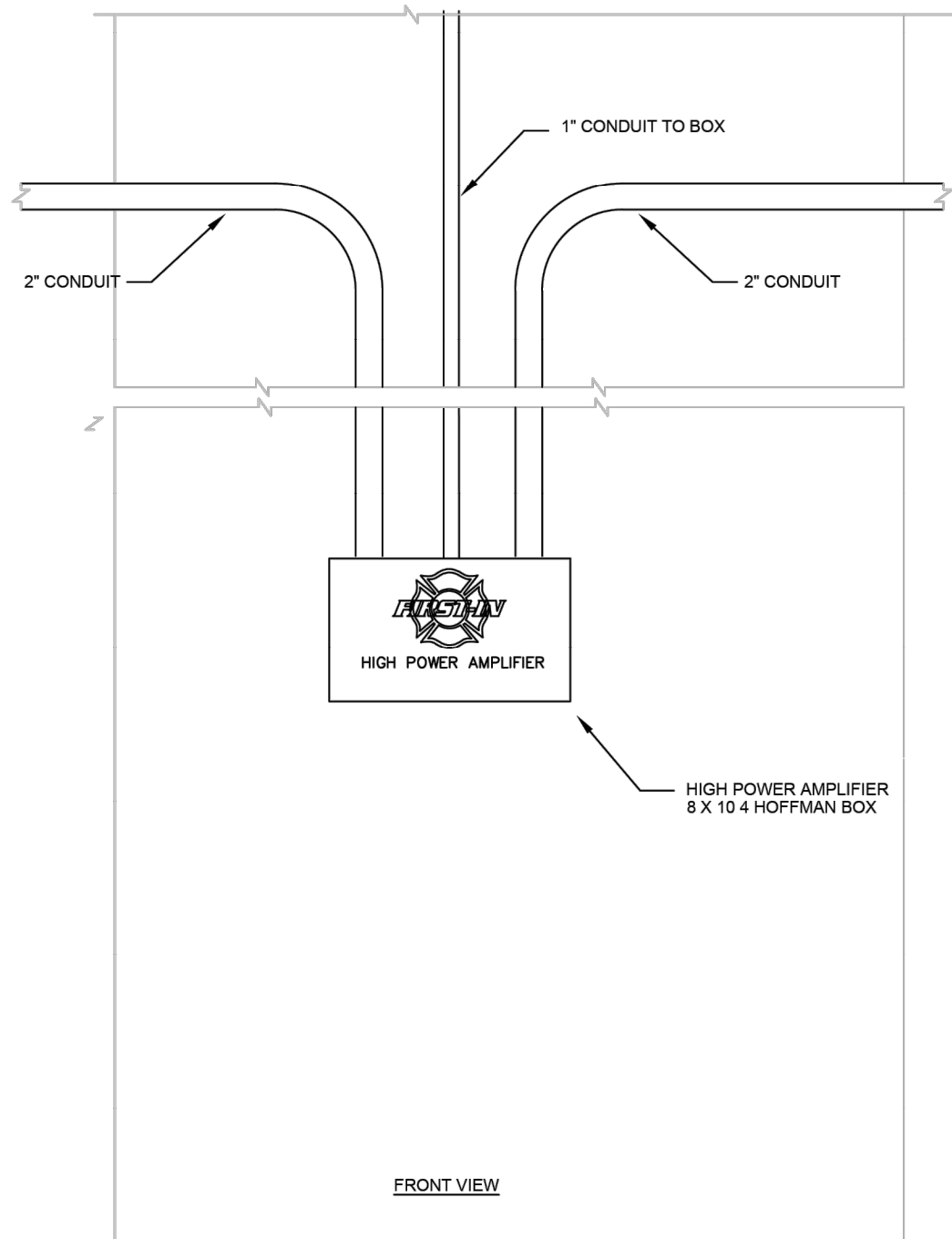
HIGH POWER AMPLIFIER AND INTERIOR SPEAKER

N.T.S.
RE: WESTNET SPECIFICATIONS FOR OVERALL DEVICE DIMENSIONS.



HIGH POWER PAGING AMPLIFIER & SPEAKER

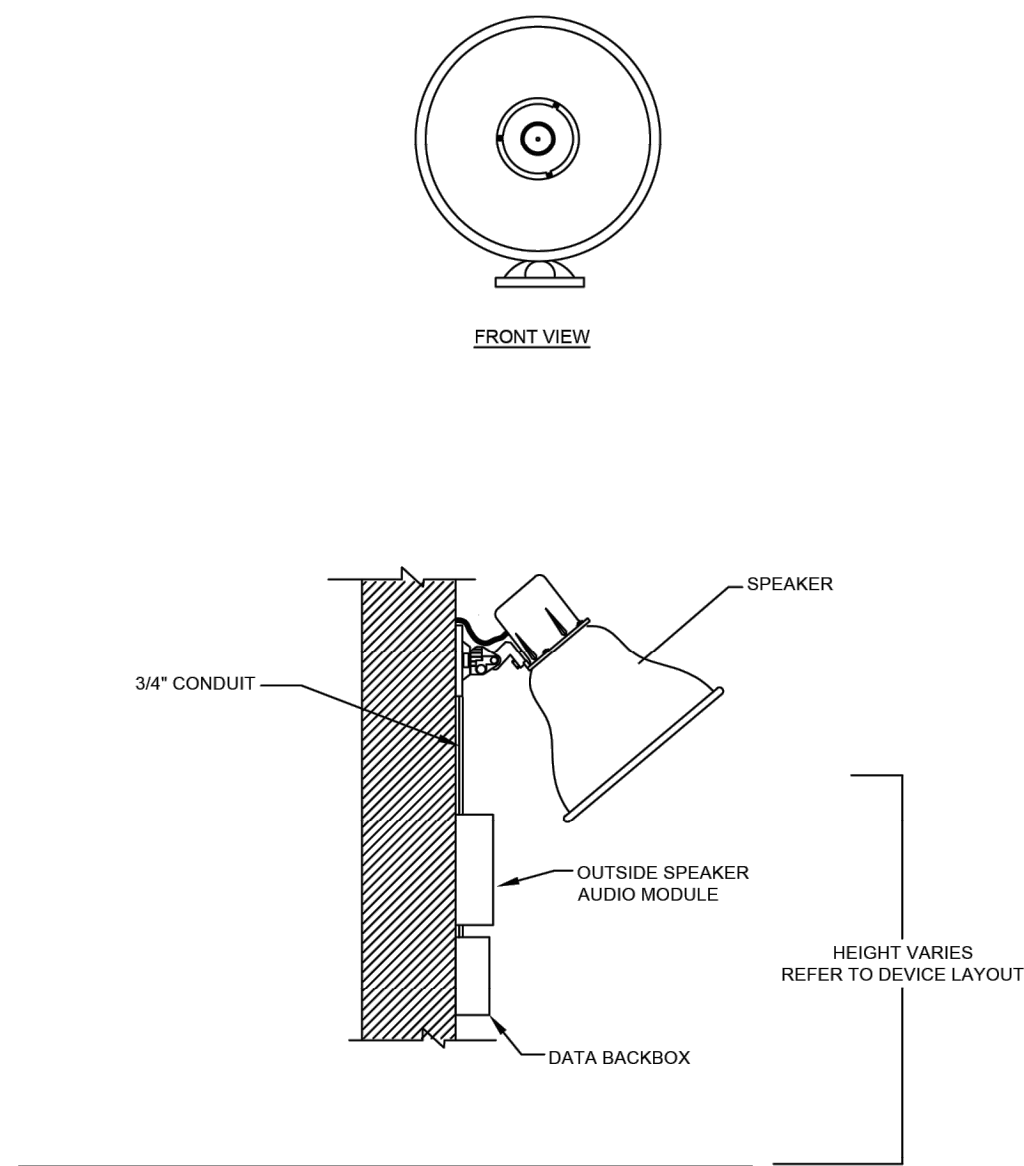
- HIGH POWER AMPLIFIERS SHALL PROVIDE DYNAMIC CONTROL OF THE FIRE ALARM SOUND LEVEL IN HIGH NOISE AREA OF THE FIRE STATION.
- AMPLIFIERS SHALL BE USED THROUGHOUT THE APPARATUS BAYS, AND ALONG THE PERIMETER OF EACH STATION.
- INCREASED VOLUME SHALL PROVIDE AUDIBLE DISPATCH IN HIGH NOISE LEVEL AREAS.
- AN AMBIENT NOISE DETECTOR SHALL SENSE SOUND LEVELS AND CONTROL THE OUTPUT POWER FROM (0) TO (128) DECIBELS.
- MAXIMUM OUTPUT POWER SHALL BE SET BY SERVICE SOFTWARE.
- A BUILT IN VOLUME LED INDICATOR SHALL DISPLAY THE OUTPUT LEVEL CONTROL ACTIVITY.
- BUILT IN LED STATUS INDICATORS SHALL INDICATE THE OPERATING MODE OF THE HIGH POWER AMPLIFIER.
- MULTIPLE HIGH POWER AMPLIFIERS SHALL BE OPERATED ON THE SMART STATION NETWORK.
- SPEAKER SHOWN OUTDOORS SHALL BE WEATHERPROOF AND DESIGNED FOR OUTDOOR USE.
- SPEAKER MOUNTS SHALL BE ADJUSTABLE TO ANY ANGLE AS NEEDED BY THE INSTALLATION.



02

OUTSIDE SPEAKER AUDIO MODULE - EXTERIOR

N.T.S.
RE: WESTNET SPECIFICATIONS FOR OVERALL DEVICE DIMENSIONS.



03

OUTSIDE APEAKER AUDIO MODULE - INTERIOR

N.T.S.
RE: WESTNET SPECIFICATIONS FOR OVERALL DEVICE DIMENSIONS.

WESTNET®



15542 CHEMICAL LANE
HUNTINGTON BEACH, CA 92649
TEL: (714) 548-3500 FAX: (714) 901-5610
www.FirstInAlerting.com

COPYRIGHT 2022
WESTNET LLC.
ALL RIGHTS RESERVED

REV	REVISION	DATE	BY



ALERT
SYSTEM

OLATHE
FIRE STATION # 9
COLLEGE BLVD & S. CRESTONE,
OLATHE, KS

PROJECT NAME:

NOTE:
IF THIS SCALE IS NOT 1"
THIS SHEET IS NOT TO SCALE

DATE: 12/11/2024

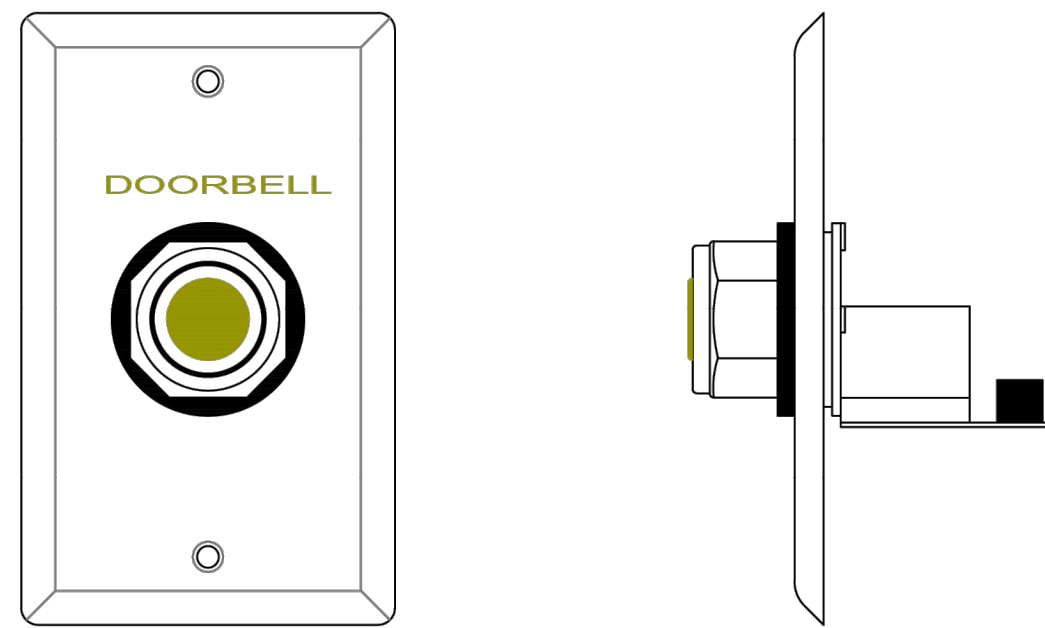
DRAWN BY: EV

SCALE: N.T.S.

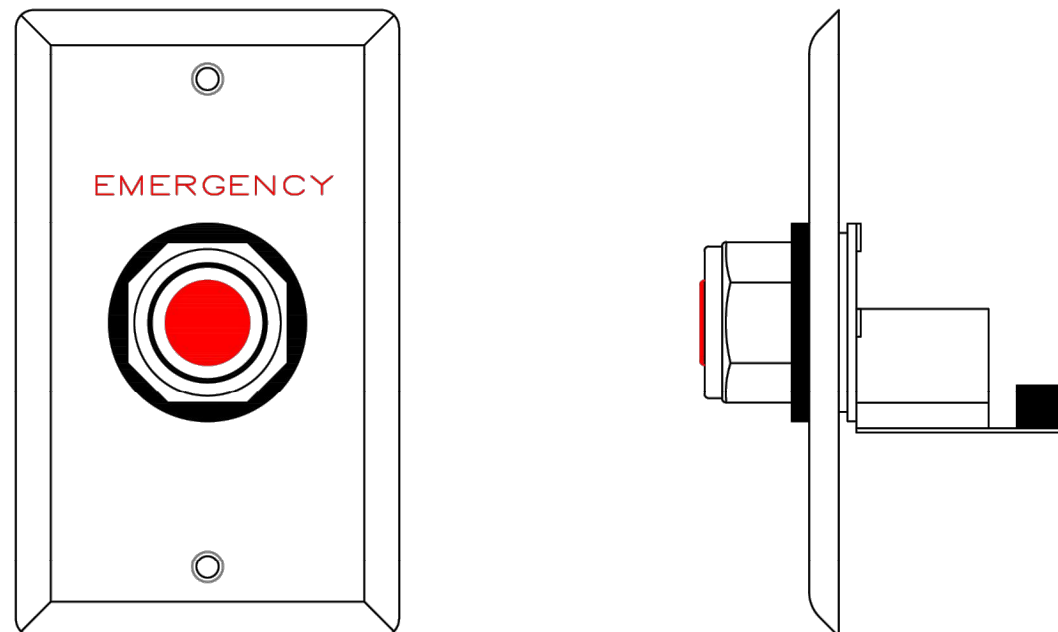
TITLE: DEVICE DETAILS

SHEET

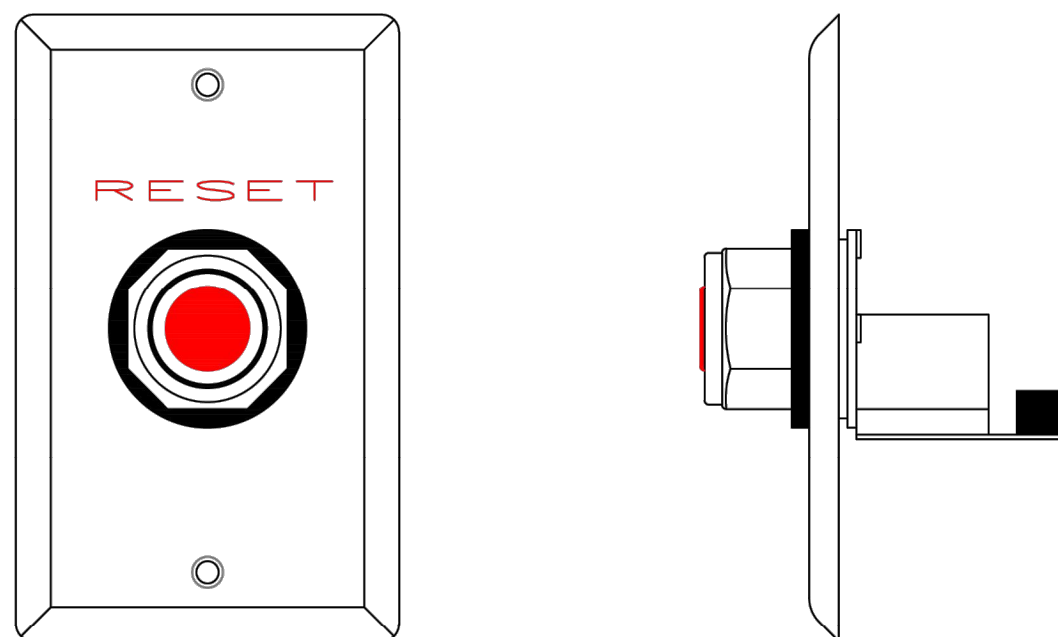
AS4.4



DB DOORBELL - DB
N.T.S.
RE: WESTNET SPECIFICATIONS FOR OVERALL DEVICE DIMENSIONS.



EMERGENCY BUTTON - EB
N.T.S.
RE: WESTNET SPECIFICATIONS FOR OVERALL DEVICE DIMENSIONS.

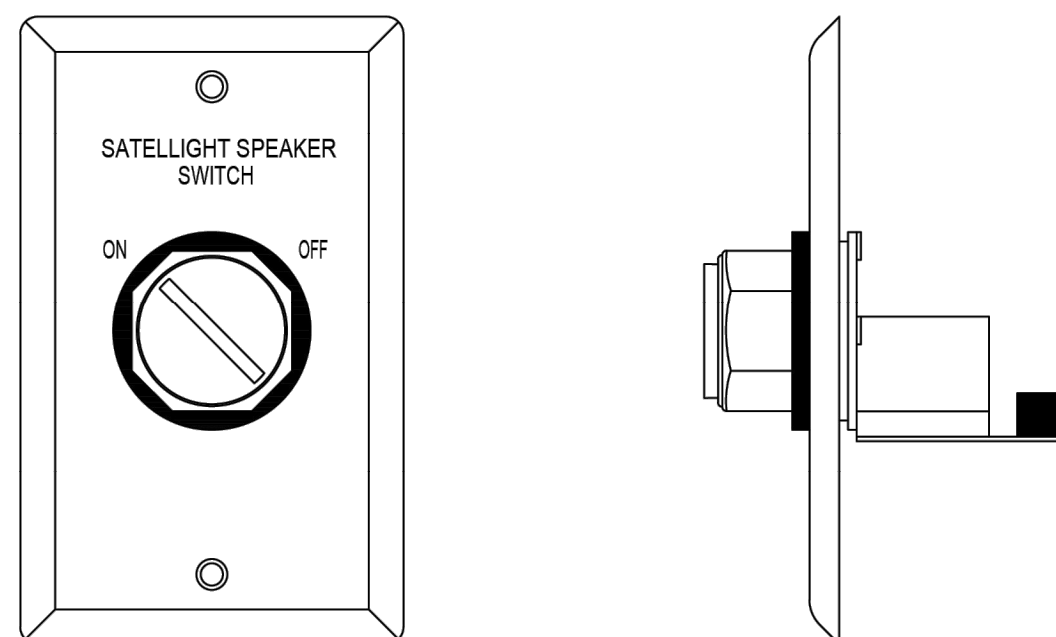
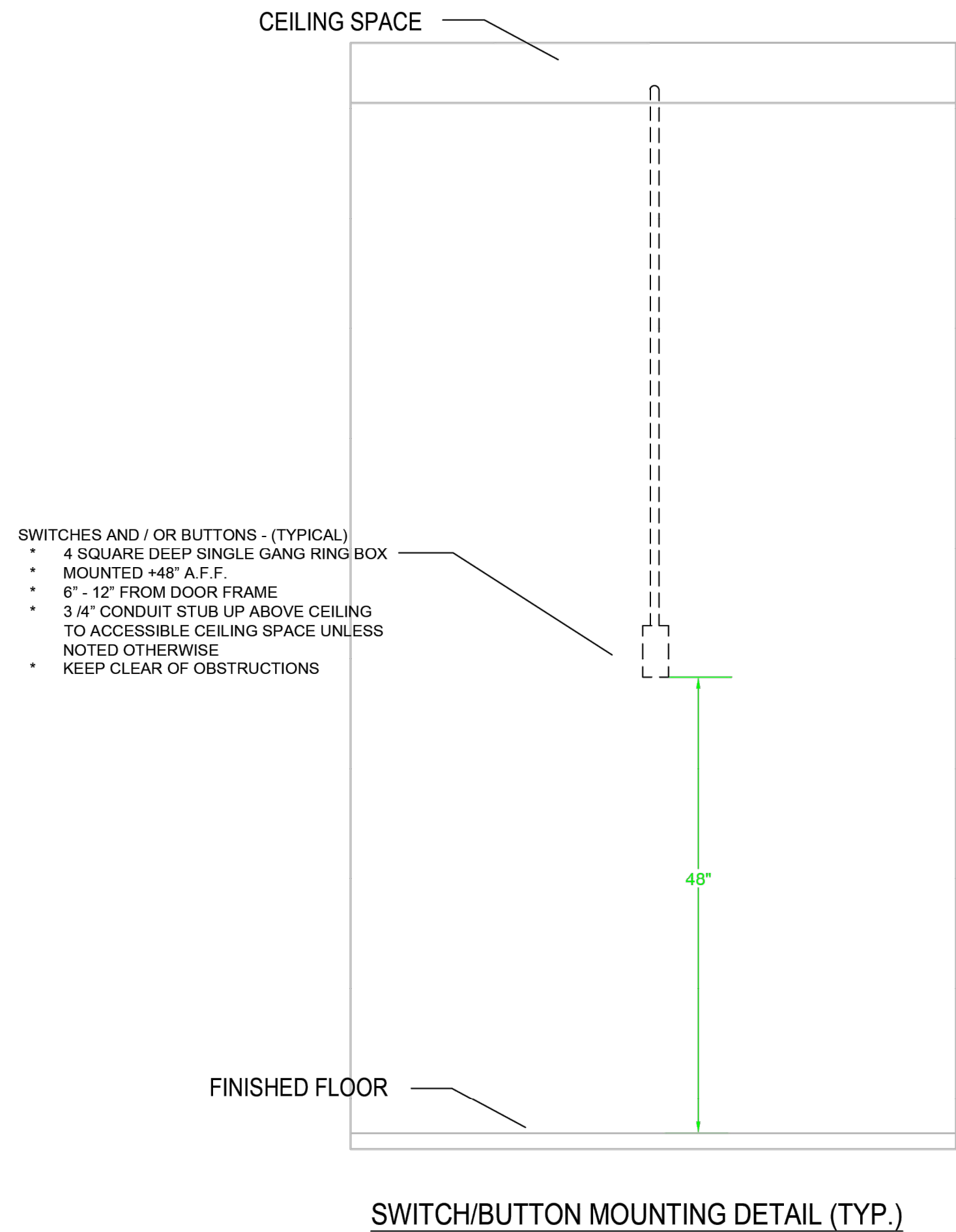


RESET BUTTON - RB
N.T.S.
RE: WESTNET SPECIFICATIONS FOR OVERALL DEVICE DIMENSIONS.

- DB DOORBELL**
- SHALL NOTIFY PERSONNEL OF VISITOR ON FIRE STATION GROUNDS.
 - NOTIFICATION OF VISITOR SHALL BE RELAYED TO DISPATCH CENTER.
 - SHALL NOTIFY FIRE PERSONNEL AT WHICH DOOR THE VISITOR IS WAITING.
 - SHALL PROVIDE BOTH AUDIBLE AND VISUAL NOTIFICATION OF DOORBELL ACTIVATION.
 - PROVIDE CUSTOMIZED MESSAGES AND ALERT TONES.

- EB EMERGENCY BUTTON**
- SHALL NOTIFY PERSONNEL OF EMERGENCY ON FIRE STATION GROUNDS.
 - SHALL ENABLE THE FIRE FIGHTER TO ANSWER THE DOOR AND ATTEND TO THE PROBLEM IMMEDIATELY.
 - SHALL NOTIFY DISPATCH CENTER OF INCIDENT OCCURANCE AT THE FIRE STATION.
 - SHALL PROVIDE BOTH AUDIBLE AND VISUAL NOTIFICATION OF AN EMERGENCY.
 - PROVIDE CUSTOMIZED MESSAGES AND ALERT TONES.

- RB RESET BUTTON**
- RESETS APPLIANCE CONTROLLER DEVICE
 - SHALL BE WITHIN CLOSE DISTANCE TO APPLIANCE CONTROLLER DEVICE



SPEAKER SWITCH - SW
N.T.S.
RE: WESTNET SPECIFICATIONS FOR OVERALL DEVICE DIMENSIONS.

- SW SPEAKER SWITCH**
- SHALL BE UTILIZED TO CONTROL THE ACTIVE/INACTIVE OPERATION OF THE SATELLIGHT CONTROLLER IN ROOM (COMBINATION SPEAKER/LED LIGHT DEVICE).

EXHIBIT C
Fee & Rate Schedule

Additional Support Services:

Additional Support Services shall be made available by the Consultant at the request of the City according to the specially negotiated rates below:

Role/Service	Hourly Rate
Technician Time	\$185.00
Technician Time (Prevailing Wage Rate)	\$225.00
Standard Programming	\$205.00
Standard Programming (Prevailing Wage Rate)	\$250.00
Engineering Time	\$295.00
Engineering Time (Prevailing Wage Rate)	\$325.00
Custom Programming and Testing Services	\$345.00
Custom Programming and Testing Services (Prevailing Wage Rate)	\$375.00

Additional Work:

The City shall provide the Consultant with a scope of services for any additional work related to the Westnet First-In Alerting System not covered by the existing Scope of Services. The Consultant shall provide quotes to the City for the additional Scope of Services requested by the City and, if approved by the City, this Professional Services Agreement shall be amended by adding the new Scope of Service with signature by both Parties.

EXHIBIT D
CITY OF OLATHE INSURANCE REQUIREMENTS

A. Insurance. Consultant agrees to secure and maintain throughout the duration of this Agreement insurance of such types and in at least such amounts as set forth below from a Kansas authorized insurance company which carries a Best's Policyholder rating of "A-" or better and carries at least a Class "VII" financial rating or better, unless otherwise agreed to by City:

1. Commercial General Liability: City must be listed by ISO endorsement or its equivalent as an additional insured on a primary and noncontributory basis on any commercial general liability policy of insurance. The insurance must apply separately to each insured against whom claim is made or suit is brought, subject to the limits of liability.

Limits: Per Occurrence, including Personal & Advertising Injury and Products/Completed Operations: \$1,000,000; General Aggregate: \$2,000,000.

2. Business Automobile Insurance: City must be listed by ISO endorsement or its equivalent as an additional insured on a primary and noncontributory basis on any automobile policy of insurance. The insurance must apply separately to each insured against whom claim is made or suit is brought, subject to the limits of liability.

Limits: Any Auto; OR All Owned Autos; Hired Autos; and Non-Owned Autos: Per occurrence, combined single limit: \$500,000
Notwithstanding the foregoing, if Consultant does not own any automobiles, then Consultant must maintain Hired and Non-Owned Auto insurance.

3. Worker's Compensation and Employer's Liability: Workers compensation insurance must protect Consultant against all claims under applicable state Worker's Compensation laws at the statutory limits, and employer's liability with the following limits.

Limits: \$500,000 Each Accident/\$500,000 Policy Limit/\$500,000 Each Employee

4. Professional Liability: Consultant must maintain throughout the duration of this Agreement and for a period of three (3) years after the termination of this Agreement, Professional Liability Insurance.

Limits: Each Claim: \$1,000,000; General Aggregate: \$1,000,000

5. Cyber Insurance: If Consultant will have access to the City's network or City's data, Consultant must maintain throughout the duration of this Agreement and for a

period of three (3) years after the termination of this Agreement. Coverage must include: Cyber Incident/Breach Response and Remediation Expenses, Digital Data Recovery, Privacy and Network Security Liability, and Notification Expense.

Limits: Per claim, each insuring agreement: \$1,000,000; Aggregate: \$1,000,000

B. Exposure Limits. The above are minimum acceptable coverage limits and do not infer or place a limit on the liability of Consultant nor has City assessed the risk that may be applicable to Consultant. Consultant must assess its own risks and if it deems appropriate and/or prudent maintain higher limits and/or broader coverage. The Consultant's insurance must be primary, and any insurance or self-insurance maintained by the City will not contribute to, or substitute for, the coverage maintained by Consultant.

C. Costs. The cost of insurance will be included in the Consultant's bid or proposal and must be at Consultant's expense. Any and all deductibles or self-insurance in the above described coverages will be the responsibility and at the sole risk of the Consultant.

D. Verification of Coverage

1. Consultant must provide a certificate of insurance on ISO form or equivalent, listing the City as the certificate holder, and additional insured endorsements for the requested coverages.
2. Any self-insurance must be approved in advance by the City and specified on the certificate of insurance. Additionally, when self-insured, the name, address, and telephone number of the claim's office must be noted on the certificate or attached in a separate document.
3. When any of the insurance coverages are required to remain in force after final payment, additional certificates with appropriate endorsements evidencing continuation of such coverage must be submitted along with the application for final payment.
4. For cyber insurance, the certificate of insurance confirming the required protection must confirm the required coverages in the "Additional Comments" section or provide a copy of the declarations page confirming the details of the cyber insurance policy.

E. Cancellation. No required coverage may be suspended, voided, or canceled, except after Consultant has provided thirty (30) days' advance written notice to the City.

F. Subconsultant's Insurance: If a part of this Agreement is to be sublet, Consultant must either cover all subconsultants under its insurance policies; OR require each subconsultant not so covered to meet the standards stated herein.

EXHIBIT E
Certificate of Insurance



CERTIFICATE OF LIABILITY INSURANCE

DATE (MM/DD/YYYY)

12/11/2024

THIS CERTIFICATE IS ISSUED AS A MATTER OF INFORMATION ONLY AND CONFERS NO RIGHTS UPON THE CERTIFICATE HOLDER. THIS CERTIFICATE DOES NOT AFFIRMATIVELY OR NEGATIVELY AMEND, EXTEND OR ALTER THE COVERAGE AFFORDED BY THE POLICIES BELOW. THIS CERTIFICATE OF INSURANCE DOES NOT CONSTITUTE A CONTRACT BETWEEN THE ISSUING INSURER(S), AUTHORIZED REPRESENTATIVE OR PRODUCER, AND THE CERTIFICATE HOLDER.

IMPORTANT: If the certificate holder is an **ADDITIONAL INSURED**, the policy(ies) must have **ADDITIONAL INSURED** provisions or be endorsed. If **SUBROGATION IS WAIVED**, subject to the terms and conditions of the policy, certain policies may require an endorsement. A statement on this certificate does not confer rights to the certificate holder in lieu of such endorsement(s).

PRODUCER RCP, Alera Group, LLC 8182 Maryland Ave. Suite 250 Clayton MO 63105	CONTACT NAME: Patti Rask PHONE (A/C, No, Ext): 314-492-4316 E-MAIL ADDRESS: prask@rcpholdings.com	FAX (A/C, No):
License#: 20020393 WESTHOL-01	INSURER(S) AFFORDING COVERAGE	NAIC #
INSURED Westnet Holdings, LLC 15542 Chemical Lane Huntington Beach CA 92649	INSURER A: Evanston Insurance Company	35378
	INSURER B: Travelers Casualty Insurance Company of America	19046
	INSURER C: Burlington Insurance Company	23620
	INSURER D: Hartford Fire Insurance Company	19682
	INSURER E: Steadfast Insurance Company	26387
	INSURER F:	

COVERAGES**CERTIFICATE NUMBER:** 1378763881**REVISION NUMBER:**

THIS IS TO CERTIFY THAT THE POLICIES OF INSURANCE LISTED BELOW HAVE BEEN ISSUED TO THE INSURED NAMED ABOVE FOR THE POLICY PERIOD INDICATED. NOTWITHSTANDING ANY REQUIREMENT, TERM OR CONDITION OF ANY CONTRACT OR OTHER DOCUMENT WITH RESPECT TO WHICH THIS CERTIFICATE MAY BE ISSUED OR MAY PERTAIN, THE INSURANCE AFFORDED BY THE POLICIES DESCRIBED HEREIN IS SUBJECT TO ALL THE TERMS, EXCLUSIONS AND CONDITIONS OF SUCH POLICIES. LIMITS SHOWN MAY HAVE BEEN REDUCED BY PAID CLAIMS.

INSR LTR	TYPE OF INSURANCE	ADDL INSD	SUBR WVD	POLICY NUMBER	POLICY EFF (MM/DD/YYYY)	POLICY EXP (MM/DD/YYYY)	LIMITS
A	<input checked="" type="checkbox"/> COMMERCIAL GENERAL LIABILITY <input type="checkbox"/> CLAIMS-MADE <input checked="" type="checkbox"/> OCCUR GEN'L AGGREGATE LIMIT APPLIES PER: <input checked="" type="checkbox"/> POLICY <input type="checkbox"/> PRO-JECT <input type="checkbox"/> LOC OTHER:	Y	Y	MKL7V7PBC001809	3/15/2024	3/15/2025	EACH OCCURRENCE \$ 1,000,000 DAMAGE TO RENTED PREMISES (Ea occurrence) \$ 100,000 MED EXP (Any one person) \$ 5,000 PERSONAL & ADV INJURY \$ 1,000,000 GENERAL AGGREGATE \$ 2,000,000 PRODUCTS - COMP/OP AGG \$ 2,000,000 \$
B	<input checked="" type="checkbox"/> AUTOMOBILE LIABILITY <input checked="" type="checkbox"/> ANY AUTO <input type="checkbox"/> OWNED AUTOS ONLY <input type="checkbox"/> SCHEDULED AUTOS <input checked="" type="checkbox"/> HIRED AUTOS ONLY <input checked="" type="checkbox"/> NON-OWNED AUTOS ONLY	Y	Y	BA6X969041	3/15/2024	3/15/2025	COMBINED SINGLE LIMIT (Ea accident) \$ 1,000,000 BODILY INJURY (Per person) \$ BODILY INJURY (Per accident) \$ PROPERTY DAMAGE (Per accident) \$ \$
C	<input checked="" type="checkbox"/> UMBRELLA LIAB <input checked="" type="checkbox"/> OCCUR <input type="checkbox"/> EXCESS LIAB <input type="checkbox"/> CLAIMS-MADE DED RETENTION \$	Y	Y	973BE09712	3/15/2024	3/15/2025	EACH OCCURRENCE \$ 2,000,000 AGGREGATE \$ 2,000,000 \$
D	WORKERS COMPENSATION AND EMPLOYERS' LIABILITY ANY PROPRIETOR/PARTNER/EXECUTIVE OFFICER/MEMBER EXCLUDED? (Mandatory in NH) If yes, describe under DESCRIPTION OF OPERATIONS below	Y/N <input checked="" type="checkbox"/> N	N/A	84WECAK3XKY	4/1/2024	4/1/2025	<input checked="" type="checkbox"/> PER STATUTE <input type="checkbox"/> OTH-ER E.L. EACH ACCIDENT \$ 1,000,000 E.L. DISEASE - EA EMPLOYEE \$ 1,000,000 E.L. DISEASE - POLICY LIMIT \$ 1,000,000
E	Tech Errors and Omissions			EOC660590000	3/15/2024	3/15/2025	Limit 2,000,000

DESCRIPTION OF OPERATIONS / LOCATIONS / VEHICLES (ACORD 101, Additional Remarks Schedule, may be attached if more space is required)
Coverage is primary and non-contributory. 30-Day Cancellation.

CERTIFICATE HOLDER**CANCELLATION**

The City of Olathe, KS Fire Station #9
1225 S. Hamilton Circle
Olathe KS 66061

SHOULD ANY OF THE ABOVE DESCRIBED POLICIES BE CANCELLED BEFORE THE EXPIRATION DATE THEREOF, NOTICE WILL BE DELIVERED IN ACCORDANCE WITH THE POLICY PROVISIONS.

AUTHORIZED REPRESENTATIVE

© 1988-2015 ACORD CORPORATION. All rights reserved.