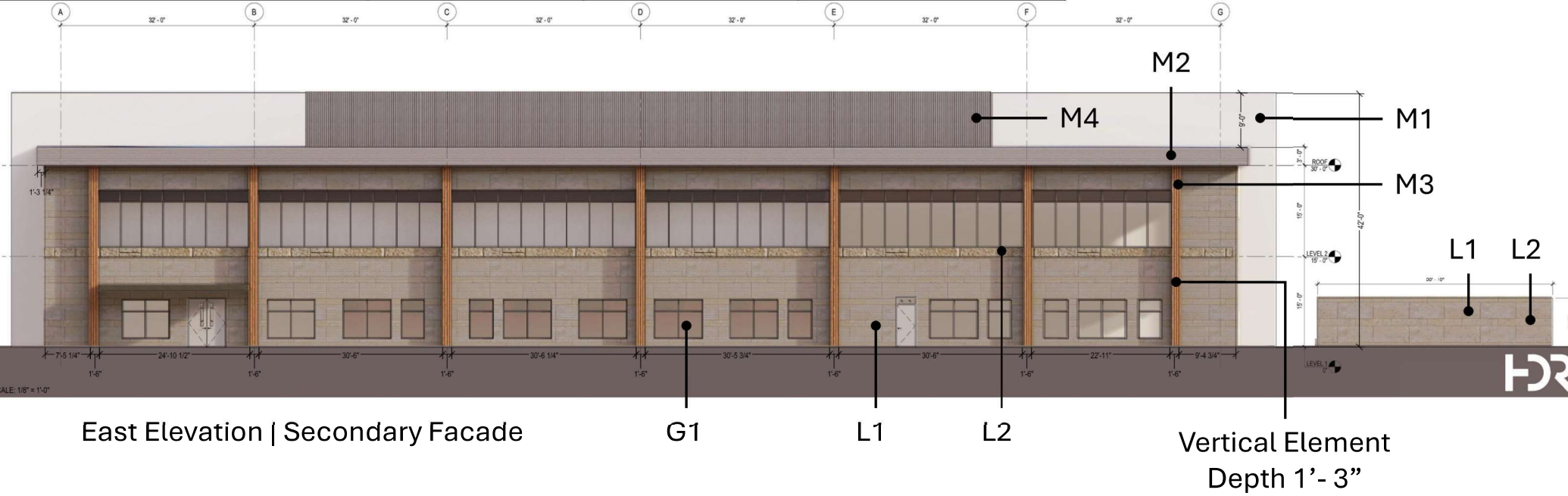
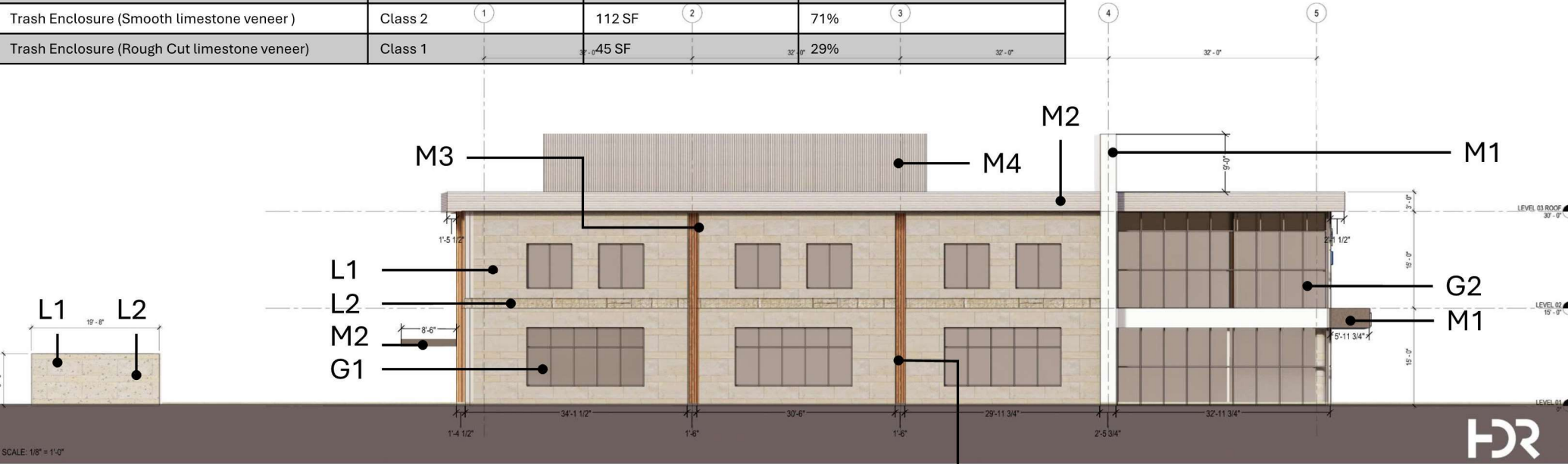


Material Name	Material Classification	Material Square Footage	Material Percentage
Insulated Metal Panel with embossed finish	Class 1	1,262 SF	14%
Insulated Metal Panel with smooth finish	Class 1	923 SF	11%
Ribbed Metal Panel	Class 3	1,047 SF	12%
Smooth limestone veneer	Class 2	2,978 SF	34%
Rough Cut limestone veneer	Class 1	278 SF	3%
Opti-gray Glazing	Class 1	2,231 SF	26%
Trash Enclosure (Smooth limestone veneer)	Class 2	220 SF	71%
Trash Enclosure (Rough Cut limestone veneer)	Class 1	90 SF	29%



- All exterior ground mounted and all rooftop building HVAC and mechanical equipment, vents, piping, roof access ladders, and utility meters must be located out of view or otherwise screened from public view. Screening must be accomplished with landscaping, screen walls, building elements, or a combination of these methods.
- Signage is approved administratively by a separate application and is subject to the requirements of UDO 18.50.190.

Material Name	Material Classification	Material Square Footage	Material Percentage
Insulated Metal Panel with embossed finish	Class 1	217 SF	4%
Insulated Metal Panel with smooth finish	Class 1	569 SF	11%
Ribbed Metal Panel	Class 3	533 SF	10%
Smooth limestone veneer	Class 2	1,883 SF	35%
Rough Cut limestone veneer	Class 1	161 SF	3%
Opti-gray Glazing	Class 1	780 SF	15%
Opti-clear Glazing	Class 1	889 SF	17%
Trash Enclosure (Smooth limestone veneer)	Class 2	112 SF	71%
Trash Enclosure (Rough Cut limestone veneer)	Class 1	45 SF	29%

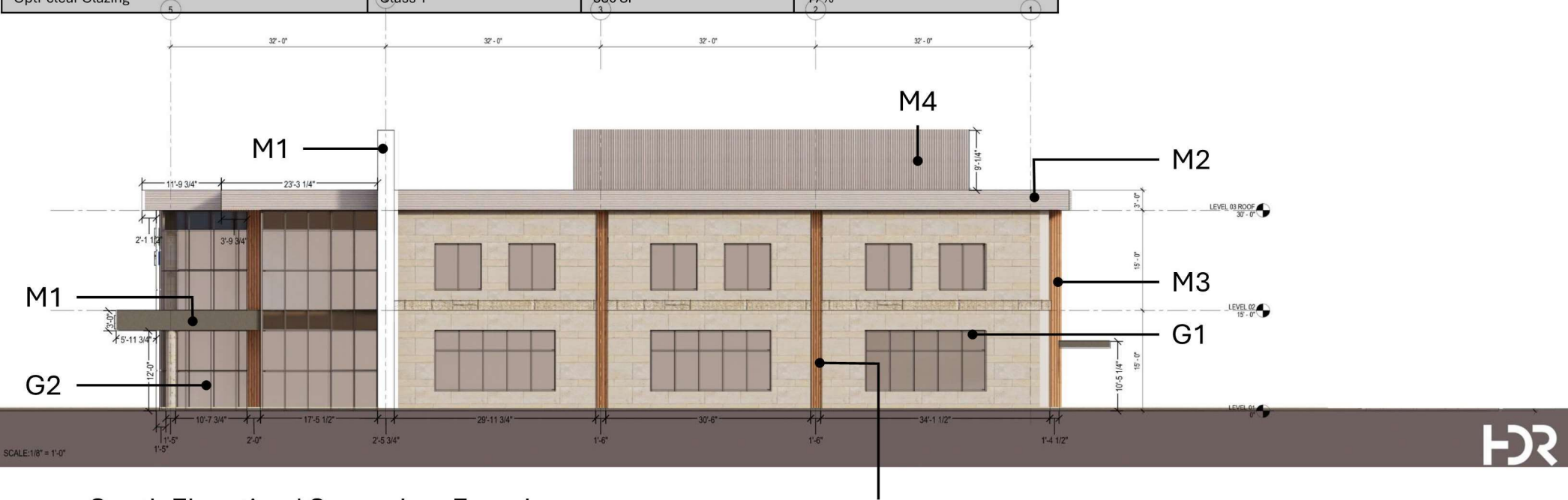


North Elevation | Primary Facade

Vertical Element
Depth 1' - 3"

- All exterior ground mounted and all rooftop building HVAC and mechanical equipment, vents, piping, roof access ladders, and utility meters must be located out of view or otherwise screened from public view. Screening must be accomplished with landscaping, screen walls, building elements, or a combination of these methods.
- Signage is approved administratively by a separate application and is subject to the requirements of UDO 18.50.190.

Material Name	Material Classification	Material Square Footage	Material Percentage
Insulated Metal Panel with embossed finish	Class 1	177 SF	4%
Insulated Metal Panel with smooth finish	Class 1	559 SF	10%
Ribbed Metal Panel	Class 3	543 SF	11%
Smooth limestone veneer	Class 2	1,919 SF	38%
Rough Cut limestone veneer	Class 1	194 SF	4%
Opti-gray Glazing	Class 1	780 SF	16%
Opti-clear Glazing	Class 1	830 SF	17%



South Elevation | Secondary Facade

Vertical Element
Depth 1'- 3"

- All exterior ground mounted and all rooftop building HVAC and mechanical equipment, vents, piping, roof access ladders, and utility meters must be located out of view or otherwise screened from public view. Screening must be accomplished with landscaping, screen walls, building elements, or a combination of these methods.
- Signage is approved administratively by a separate application and is subject to the requirements of UDO 18.50.190.

Material Name	Material Classification	Material Square Footage	Material Percentage 8,784
Insulated Metal Panel with embossed finish	Class 1	2,916 SF	33%
Insulated Metal Panel with smooth finish	Class 1	831 SF	10%
Rough Cut limestone veneer	Class 1	542 SF	6%
Opti-clear Glazing	Class 1	4,495 SF	51%



West Elevation | Primary Facade

- All exterior ground mounted and all rooftop building HVAC and mechanical equipment, vents, piping, roof access ladders, and utility meters must be located out of view or otherwise screened from public view. Screening must be accomplished with landscaping, screen walls, building elements, or a combination of these methods.
- Signage is approved administratively by a separate application and is subject to the requirements of UDO 18.50.190.

Northwest Elevation



Southeast Elevation

