



TESSERE

All work herein is the exclusive property of TESSERE and is to be used or used in any way without the express written consent of TESSERE. All drawings, specifications, data, design, and engineering are hereby made available for review and approval. Work of TESSERE.

CROSSLAND
CONSTRUCTION COMPANY, INC.



PROGRESS PRINT

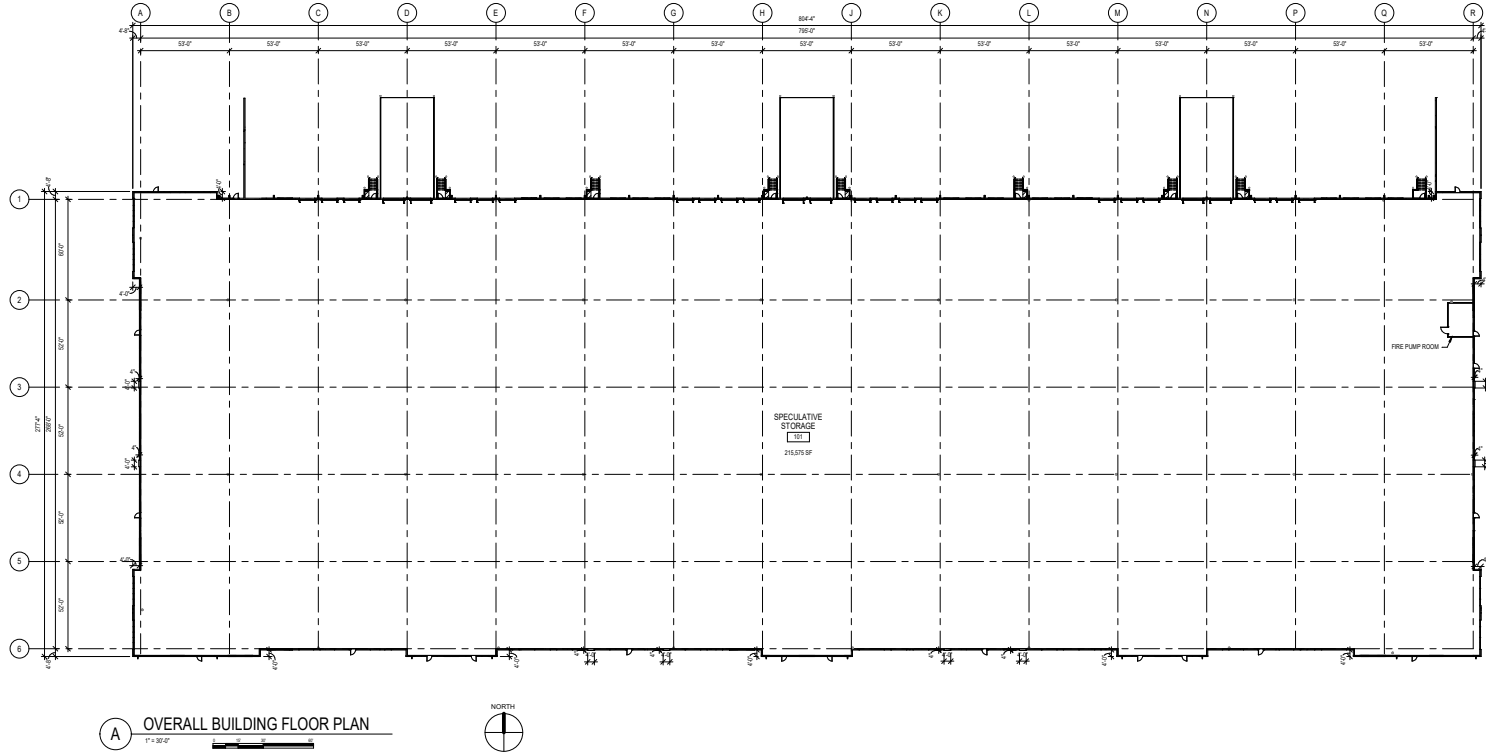
HEDGE INDUSTRIAL PARK NORTH

ASPEN INDUSTRIAL LAND FUND | LLC
SW 1/2, NW 1/4, SEC 22, T.144S, R.20E | COLAHE, 86092

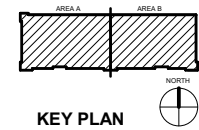
REV 02	2023/07/18
REV 01	2023/06/01
PROJECT NO.	1033802418
STATUS	PRELIMINARY SITE DEVELOPMENT PLAN
DATE	08/21/2023
DRAWN BY	BME
CHECKED BY	JM

RENDERING

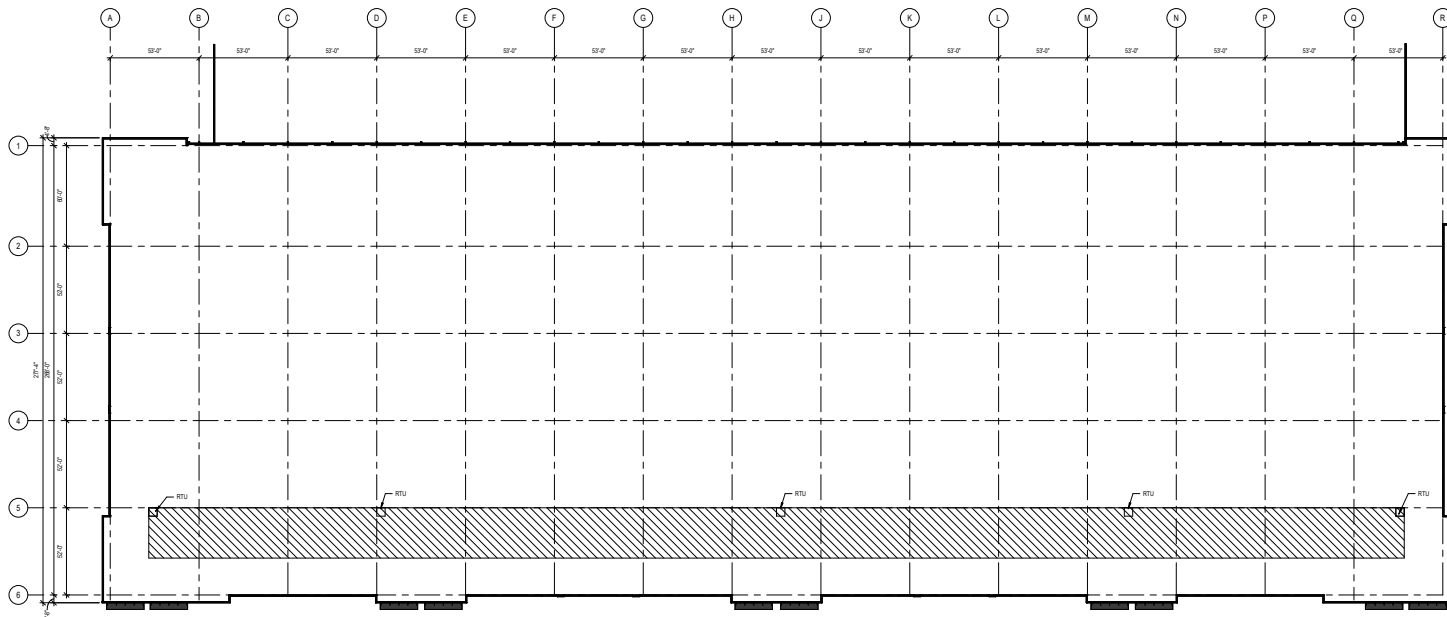
SK004



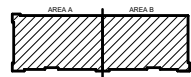
A OVERALL BUILDING FLOOR PLAN
1" = 32'-0"



KEY PLAN



OVERALL BUILDING ROOF PLAN



KEY PLAN





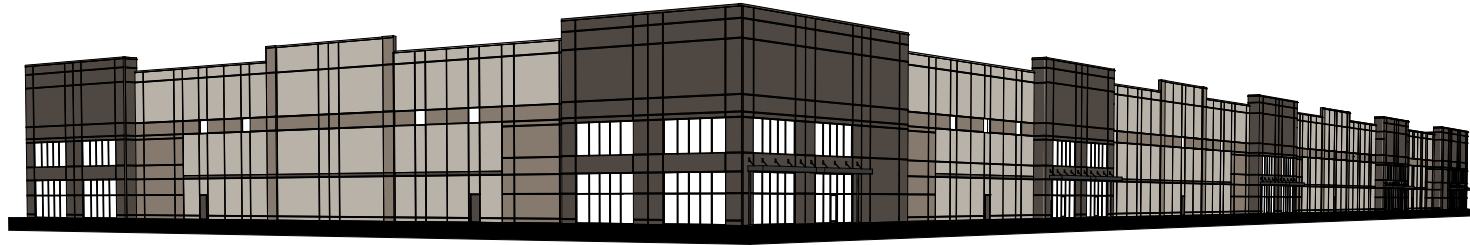
TESSERE

All work herein is the exclusive property of TESSERE and is to be used or used in any way without the express written consent of TESSERE. All drawings, specifications, data, design, and engineering documents shall constitute the original and approved work of TESSERE.

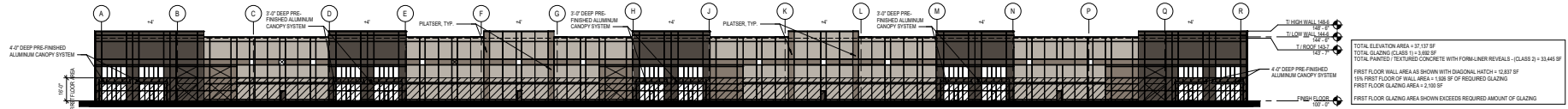
CROSSLAND
CONSTRUCTION COMPANY, INC.



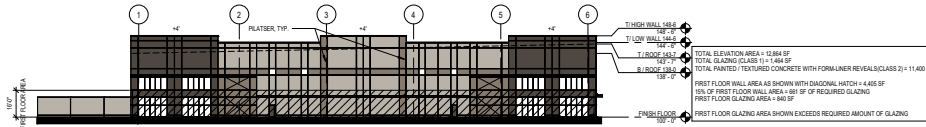
PROGRESS PRINT



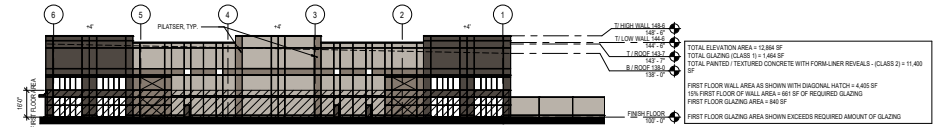
1 PERSPECTIVE VIEW
NOT TO SCALE



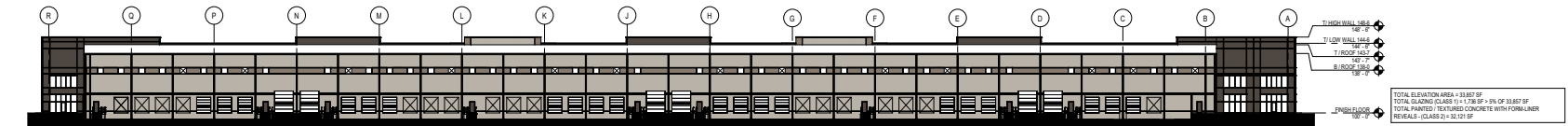
2 SOUTH ELEVATION - (PRIMARY FACADE)
NOT TO SCALE



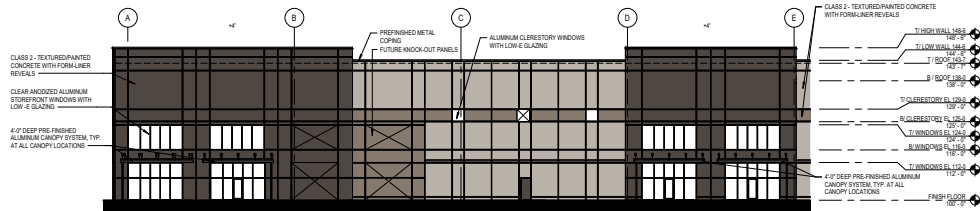
3 WEST ELEVATION - (PRIMARY FACADE)
NOT TO SCALE



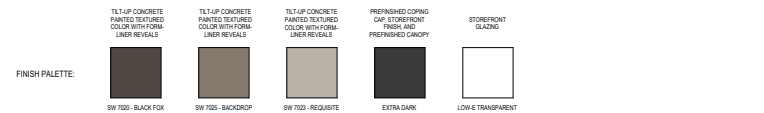
4 EAST ELEVATION - (PRIMARY FACADE)
NOT TO SCALE



5 NORTH ELEVATION - (SECONDARY FACADE)
NOT TO SCALE



6 TYPICAL MATERIALS AND HEIGHTS
NOT TO SCALE



GENERAL NOTES:
1. EXTERIOR GROUND-MOUNTED OR BUILDING MOUNTED EQUIPMENT, INCLUDING BUT NOT LIMITED TO MECHANICAL EQUIPMENT, UTILITY METER BANKS AND COOLERS MUST BE SCREENED FROM PUBLIC VIEW WITH PERMANENTLY MOUNTED SCREENS OR WITH ARCHITECTURAL TREATMENT COMPATIBLE WITH THE BUILDING ARCHITECTURE.
2. ROOF TOP UNIT IS NOT INCLUDED IN SCOPE OF WORK. FUTURE ROOF TOP UNITS ARE ANTICIPATED TO BE PROVIDED WITH EXTERNALLY ATTACHED SCREENS IF VISIBLE ABOVE THE PARAPET.
3. NO SIGNAGE IS INCLUDED IN SCOPE OF WORK AT THIS TIME. ALL FUTURE SIGNAGE SHALL BE APPROVED WITH SEPARATE APPLICATION.

BUILDING	NORTH (SECONDARY)	EAST (PRIMARY)	SOUTH (PRIMARY)	WEST (PRIMARY)
GLASS MATERIALS ARE CLASS 1 AND 2				
TOTAL ELEVATION AREA	13,887 SF	12,884 SF	12,884 SF	12,884 SF
TOTAL GLAZING CLASS 1 + 2	4,405 SF	4,405 SF	4,405 SF	4,405 SF
TOTAL PAINTED / TEXTURED CONCRETE WITH FORM-LINER REVEALS - (CLASS 2) + 3	9,482 SF	8,479 SF	8,479 SF	8,479 SF
FIRST FLOOR GLAZING AREA	1,100 SF	1,100 SF	1,100 SF	1,100 SF
TOTAL BUILDING GLAZING AREA	5,505 SF	5,505 SF	5,505 SF	5,505 SF
TOTAL BUILDING GLAZING %	39.6%	42.8%	42.8%	42.8%
PAINTED / TEXTURED CONCRETE AREA WITH FORM-LINER REVEALS - (CLASS 2)	9,482 SF	8,479 SF	8,479 SF	8,479 SF
CONCRETE / TEXTURED CONCRETE %	60.4%	57.2%	57.2%	57.2%

HEDGE INDUSTRIAL PARK NORTH
ASPEN INDUSTRIAL LAND FUND | LLC
SW 1/2, NW 1/4, SEC. 22, T-14-S, R-2-E, COATHE, 86062

REV 02 03/20/18
REV 01 03/20/18
PROJECT NO 103304018
STATUS PRELIMINARY DATE DEVELOPMENT PLAN
DATE 08/21/2020
DRAWN BY BMS
CHECKED BY JST

ARCHITECTURAL
ELEVATIONS

SK004.3

