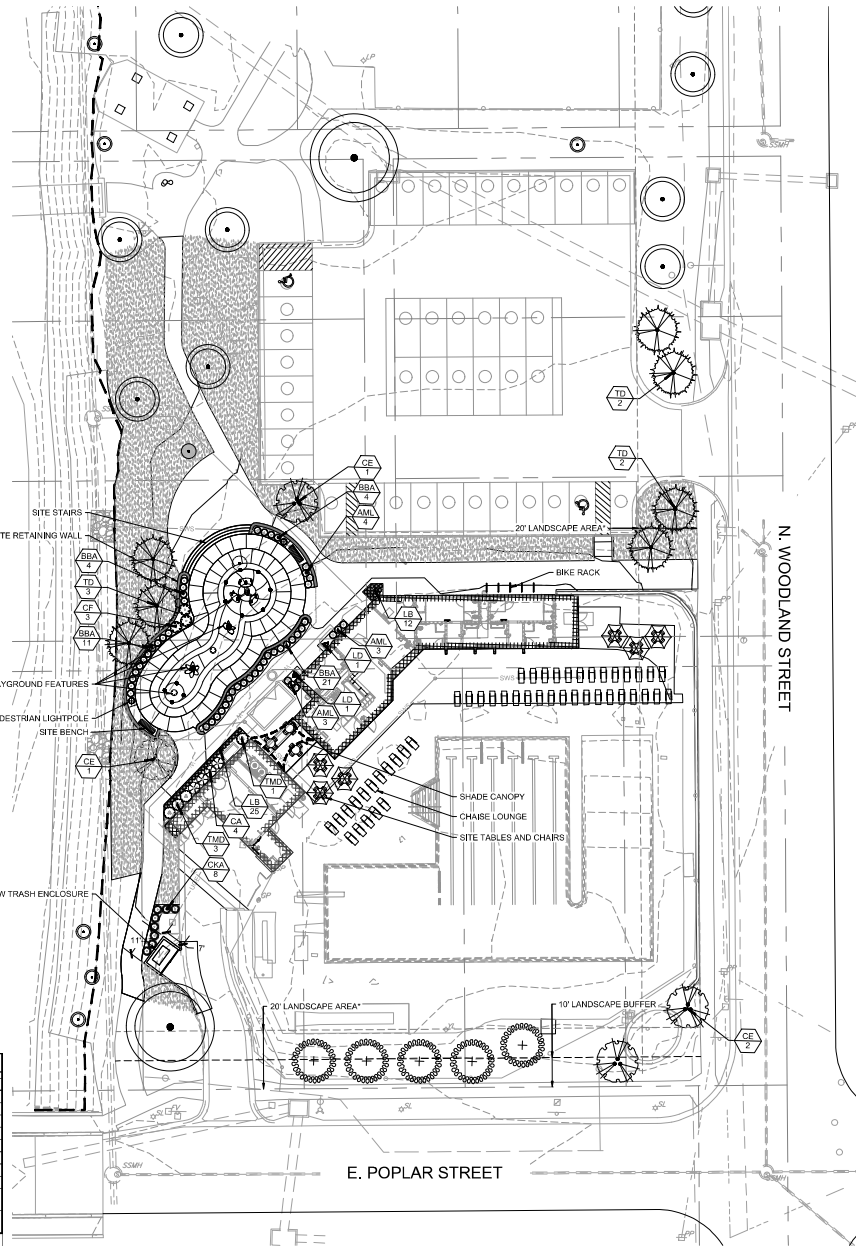


LANDSCAPE NOTES:

- FIELD VERIFY UTILITIES SHOWN ON PLANS PRIOR TO WORK COMMENCEMENT. INFORMATION SHOWN ON PLANS IS FROM AVAILABLE INFORMATION SHOULD BE CONSIDERED APPROXIMATE. THE CONTRACTOR AGREES TO BE FULLY RESPONSIBLE FOR ALL DAMAGE TO UTILITIES MADE FROM CONSTRUCTION ACTIVITY. IMMEDIATELY NOTIFY PROJECT LANDSCAPE ARCHITECT AND ENGINEER IF DISCREPANCIES ARISE.
- COMPLETE REQUIRED LANDSCAPING FOR THE ENTIRE SITE IN CONFORMANCE TO THE PLANS AND SPECIFICATIONS, INCLUDING BUT NOT LIMITED TO SEEDING AREAS AND SITE CLEAN-UP.
- DISTURBED OR DAMAGED AREAS DUE TO CONSTRUCTION ACTIVITIES NOT IDENTIFIED ON THESE PLANS, INCLUDING BUT NOT LIMITED TO STAGING, DEMOLITION, ACCESS, OR INSTALLATIONS, SHALL BE REPAIRED, ESTABLISHED, AND RESTORED TO ORIGINAL OR BETTER CONDITIONS AT CONTRACTOR'S COST. CONTRACTOR SHALL COMPLY WITH APPLICABLE CODES AND ORDINANCES REGARDING LANDSCAPING REPAIR TO PLANS AND/OR SPECIFICATIONS FOR PLANT MATERIAL, SOILS, AND INSTALLATION METHODS.
- SEEDING AREAS TO BE GUARANTEED FOR SIX (6) MONTHS FROM THE DATE OF SUBSTANTIAL COMPLETION AND ACCEPTANCE.
- ALL WORK SHALL BE COORDINATED WITH THE WORK OF OTHER TRADES.
- THE CONTRACTOR SHALL LOCATE AND VERIFY ALL EXISTING AND NEW UTILITY LOCATIONS PRIOR TO PLANTING, AND SHALL REPORT ANY UTILITY CONFLICTS TO THE OWNER'S REPRESENTATIVE. ANY DAMAGE TO UTILITIES OR OTHER SITE IMPROVEMENTS CAUSED BY THE CONTRACTOR WILL BE REPAIRED AT NO COST TO THE OWNER. REFER TO CIVIL AND ELECTRICAL DRAWINGS FOR PROPOSED UTILITY LOCATIONS AND EXTENSION LIGHTING LOCATIONS.
- THE CONTRACTOR SHALL KEEP ROOT BALLS INTACT PRIOR TO AND DURING PLANTING OPERATIONS. PLANTS WITH BROKEN OR DAMAGED ROOT BALLS SHALL BE REJECTED AND IMMEDIATELY REMOVED FROM THE SITE. KEEP ROOT BALLS DAMP AND PROTECTED FROM DAMAGE DUE TO WIND AND SUN. DO NOT SHAKE ROOT BALL ALL MING BAGS SHALL BE CUT AND REPAIRS MADE FROM THE ENTIRE TOP AND 2/3 OF SIDES OF ROOT BALLS PRIOR TO INSTALLATION.
- THE OWNER RESERVES THE RIGHT TO SUBSTITUTE PLANT MATERIAL TYPE, SIZE, AND/OR QUANTITY. CONTRACTOR CANNOT SUBSTITUTE PLANT MATERIAL WITHOUT WRITTEN APPROVAL OF THE OWNER.
- THE OWNER'S REPRESENTATIVE RESERVES THE RIGHT TO REJECT ANY PLANT MATERIAL NOT CONFORMING TO THE SPECIFICATIONS.
- ALL PLANT MATERIAL MUST CONFORM TO THE AMERICAN STANDARDS FOR NURSERY STOCK (ANSI), LATEST EDITION PUBLISHED BY THE ANLA AND AZSA. THIS IS A REPRESENTATIVE GUIDELINE SPECIFICATION ONLY AND WILL CONSTITUTE MINIMUM QUALITY REQUIREMENTS FOR THE PLANT MATERIAL.
- LARGER SIZED PLANT MATERIALS OF THE SPECIES LISTED MAY BE USED IF THE STOCK CONFORMS TO THE A.S.N.S. ALL SPECIES SUBSTITUTIONS MUST BE APPROVED IN WRITING BY THE OWNER'S REPRESENTATIVE.
- ANY MATERIAL WHICH DIES, OR DEFOLIATES (PRIOR TO ACCEPTANCE OF THE WORK) WILL BE PROMPTLY REMOVED AND REPLACED FREE OF CHARGE.
- ALL PLANT MATERIAL SHALL BE GUARANTEED TO BE IN LIVE AND HEALTHY CONDITION FOR ONE FULL YEAR AFTER FINAL PROJECT ACCEPTANCE OR SHALL BE REPLACED FREE OF CHARGE WITH SAME GRADE AND SPECIES.
- THE LOCATION OF PLANT MATERIAL IS CRITICAL AND SHALL BE INSTALLED AS INDICATED ON THE DRAWINGS. STAKE OR MARK LOCATION OF ALL PLANT MATERIAL AND BED LINE LOCATIONS. OBTAIN APPROVAL OF OWNER'S REPRESENTATIVE PRIOR TO INSTALLATION OF ALL MATERIAL.
- THE LANDSCAPE CONTRACTOR SHALL REMOVE ALL CONSTRUCTION DEBRIS AND MATERIALS DETRIMENTAL TO PLANT GROWTH FROM PLANTING SITS AND BEDS PRIOR TO BACKFILLING WITH PLANTING MIX.
- ALL AREAS DESIGNATED FOR THE PLANTING OF TREES, SHRUBS, GROUNDCOVER, AND PERENNIALS SHALL HAVE SUB-GRADE TILLED UP TO A MINIMUM DEPTH OF 8 INCHES.
- ALL AREAS DESIGNATED FOR THE INSTALLATION OF TURF GRASS OR SEED MIXTURES SHALL HAVE TOPSOIL THOROUGHLY LOOSEND AND TILLED TO A MINIMUM DEPTH OF AT LEAST 4 INCHES.
- PROVIDE DOUBLE SHREDDED HARDWOOD MULCH IN ALL TREE SAUCERS AND PLANTING BEDS TO A 3-INCH MINIMUM DEPTH. APPLY PRE-EMERGENT TO ALL PLANTING BEDS PRIOR TO MULCHING.
- ALL SOIL SURFACES NOT DESIGNATED FOR PLANTING OF TREES, SHRUBS, AND/OR GROUNDCOVERS PER THIS PLAN ARE TO BE SOODED WITH A TURF-TYPE TALL RESCUE BLEND.
- THE LANDSCAPE CONTRACTOR SHALL TEST PROPOSED PLANTING AREAS FOR SOIL NUTRIENT DEFICIENCIES AND UNDESIRABLE SOIL TEXTURE AND STRUCTURE. BASED ON THE RESULTS OF THIS TESTING, THE LANDSCAPE CONTRACTOR SHALL PROVIDE AND INCORPORATE SOIL CONDITIONING MATERIALS (IE: FERTILISER, SAND, COMPOST, ETC.) AS NECESSARY TO DEVELOP A PLANT GROWTH MEDIUM OF ADEQUATE FERTILITY, STRUCTURE, AND TEXTURE FOR THE ESTABLISHMENT OF LANDSCAPE MATERIALS. TEST IS NOT ACCEPTABLE.
- THE LANDSCAPE CONTRACTOR SHALL REMOVE FROM THE SITE ALL ROCK GREATER THAN 1/4 INCH AND ALL DEBRIS IN THE AREAS OF PROPOSED NEW PLANTINGS.
- REMOVE AND DEPOSE OF ALL PLANT MATERIAL ON PROJECT AREA INCLUDING BUT NOT LIMITED TO TURF, SHRUBS, AND GROUND COVER.
- FINAL GRADE OF PLANTER SOIL SURFACES ARE TO BE 3 INCHES BELOW ADJACENT CURBING, WALKS, PAVEMENTS AND TURF AREAS TO ACCOMMODATE A TOP DRESSING OF MULCH AND 1/4 INCH FOR SOIL AREAS.
- DAMAGED TURF AREAS ADJACENT TO PLANTING AREAS SHALL BE RESTORED AND SOODED TO MATCH EXISTING ADJACENT TOPOGRAPHY AND TURF TYPE.
- IT SHALL BE THE RESPONSIBILITY OF THE LANDSCAPE CONTRACTOR TO PROVIDE THE OWNER WITH HORTICULTURAL INFORMATION AS A GUIDE TO THE MAINTENANCE OF ALL PLANTS IN THIS PLAN FOR OPTIMUM GROWTH AND VIBOR.
- THE TERMS AND CONDITIONS OF A WARRANTY PERIOD GUARANTEEING THE SURVIVAL OF THE PLANTS OF THIS PLAN SHALL BE PROVIDED BY THE LANDSCAPE CONTRACTOR AND AGREED TO BY THE OWNER. THE OWNER SHALL PROVIDE FOR THE MAINTENANCE OF PLANTINGS PER THIS PLAN COMMENCING WITH THE END OF THE WARRANTY PERIOD.
- THE LANDSCAPE CONTRACTOR IS RESPONSIBLE FOR ESTABLISHING AND MULCHING ANY AREAS OF GROWTH THAT HAS NOT BECOME ESTABLISHED DURING THE NEXT PERMANENT PLANTING SEASON.
- THE LANDSCAPE CONTRACTOR IS RESPONSIBLE FOR COMPLETELY MAINTAINING HIS SCOPE OF WORK UNTIL FINAL ACCEPTANCE OF THE WORK BY THE LANDSCAPE ARCHITECT AND OWNER. THIS WORK SHALL INCLUDE, BUT IS NOT LIMITED TO, WATERING, MULCHING, SPRAYING, WEEDING, AND FERTILIZING PLANTING AND TURF AREAS.
- SEED: ALL SOIL SURFACES NOT DESIGNATED FOR PLANTING OF TREES, SHRUBS, AND/OR GROUNDCOVERS PER THIS PLAN ARE TO BE MECHANICALLY SPREAD WITH KC ENDURANCE TALL TURF-TYPE RESCUE.
- SEED/HYDROMORPHIC MECHANICALLY SPREAD SEED AT A RATE OF 10-12 LBS PER 1,000 SF. HYDROMORPHIC WITH A WOOD OR PAPER CELLULOSE COMMERCIAL MULCH MATERIAL AT A RATE OF 3,000 LBS/ACRE.
- PLANTING SCHEDULE:
TREE PLANTING: MARCH 15 - JUNE 15 OR SEPTEMBER 15 - DECEMBER 31
SHRUB PLANTING: APRIL 15 - JUNE 15 OR AUGUST 15 - OCTOBER 15
SOIL/SEED PLANTING: MARCH 15 - JUNE 15 OR SEPTEMBER 15 - DECEMBER 1
- ALL PLANTING METHODS SHALL COMPLY WITH CITY OF OLATHE, KS STANDARDS.

PLANT SCHEDULE

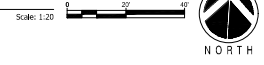
SYMBOL	CODE	BOTANICAL / COMMON NAME
TREES		
	AA	Acer rubrum 'Armstrong' / Armstrong Red Maple
	CE	Cercis canadensis / Eastern Redbud Multi-trunk
	TD	Taxodium distichum 'Mickelkorn' / Shawnee Brave Bald Cypress
SHRUBS		
	AML	Aronia melanocarpa 'UCONNAN165' / Low Space Mound® Black Chokeberry
	BBA	Bouteloua gracilis 'Blonde Ambition' / Blonde Ambition Blue Grama
	CA	Calamagrostis x acutiflora 'Karl Foerster' / Karl Foerster Feather Reed Grass
	CKA	Calliandra americana / American Beautyberry
	CF	Cornus sericea 'Flamow' / Arctic Fire® Red Twig Dogwood
	LB	Liriodie muscari 'Big Blow' / Big Blue Lyturf
	LD	Lonicera x brownii 'Dropmore Scarlet' / Dropmore Scarlet Honeysuckle
	TMD	Taxus x media 'Densiformis' / Dense Anglo-Japanese Yew
GROUND COVERS		
	TFO	Turfgrass Rescue Sod / Rescue Sod



Mill Creek Bathhouse and Splashpad - Landscaping Requirements		
	Required	Provided
Street Trees:		
1 Tree per 40 LF of Street Frontage		
E Poplar Street - 244 LF / 40' = 6 shade trees and 2 ornamental trees	6	6*
6 Canopy Trees	2	2
2 Ornamental Trees	12	12
N Woodland Street - 479 LF / 40' = 12 trees		
Screening:		
*Team Compactor/Container areas must be approved by landscape	YES	YES
Utility structures will not be placed along collector or arterial streets except when approved by the city	YES	YES
Landscaping selected for screening will be provided on three (3) sides of the structure and shield the structure from public view.	YES	YES

*1 existing canopy tree used to meet 6 minimum requirement total

1 Landscape Plan



9801 Renner Blvd., Ste. 300
Lenexa, KS 66219
913.492.0400
gba@gbainc.com

THE CREEK
320 E POPLAR ST.
OLATHE, KS 66061

PROPOSED FACILITY FOR

PRELIMINARY
DEVELOPMENT
PLAN
RESUBMITTAL

REVISION

PROJECT NUMBER
16890.00
DATE
03/30/2026

DESIGNED
N/F
DRAWN
N/F
REVIEWED
JMS
SHEET TITLE

LANDSCAPE PLAN

SHEET NUMBER
L100

© George Butler Associates, Inc. 2026
Engineering CD# 0-20
Landscape CD# 0-20
Land Surveying CD# 0-8

G:\16890\CD# 30\Production Drawings\Preliminary Site Plans\CD# 16890\100.dwg Layout: L100 LANDSCAPE PLAN Monday, March 30, 2026, 8:27pm Copyright: 2026, George Butler Associates, Inc.

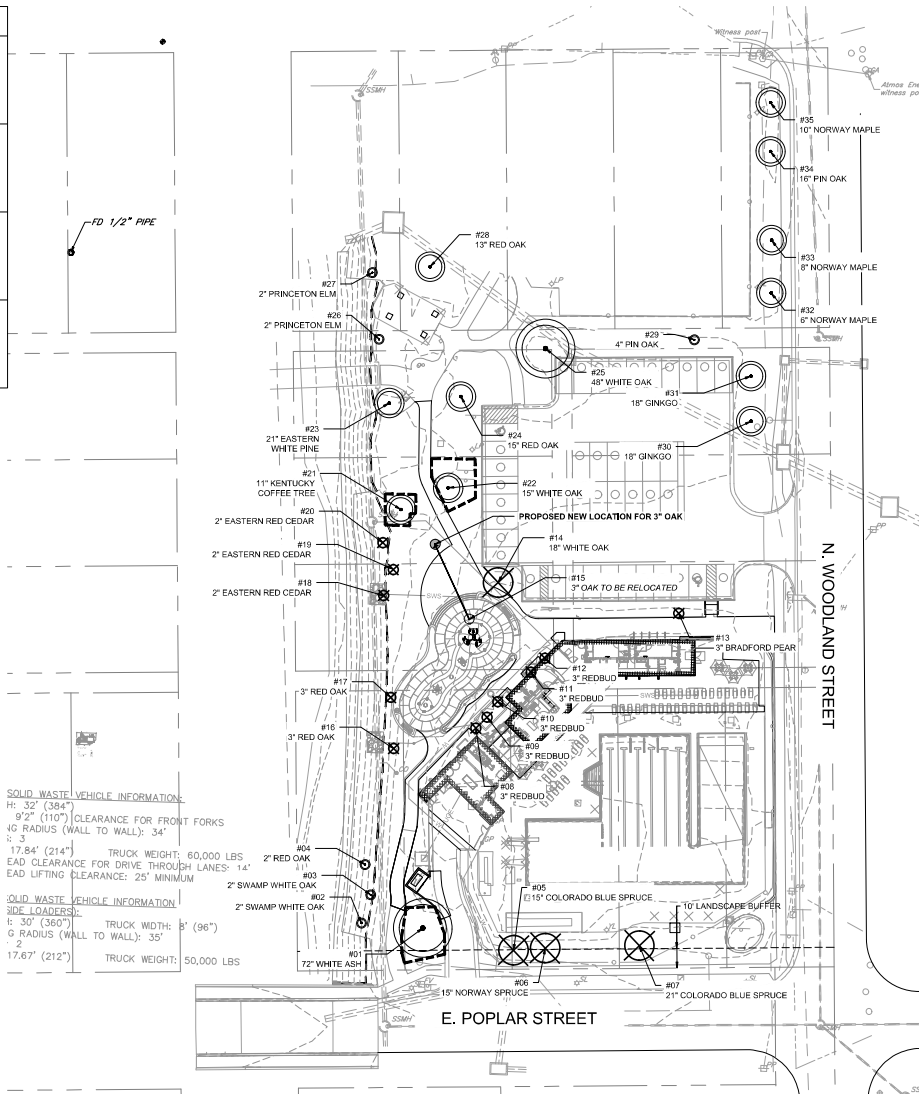
LEGEND:

	TREE TO PRESERVE IN PLACE
	TREE TO BE REMOVED
	TREE PROTECTION FENCING
	TREE TO BE RELOCATED

Mill Creek Park - Tree Inventory

Tag#	Botanical Name	Common Name	Size (DBH) (inches)	Condition	Preserve or Remove	Significant
1	<i>Fraxinus americana</i>	White Ash	72	Good	Preserve	YES
2	<i>Quercus bicolor</i>	Swamp White Oak	2	Good	Preserve	NO
3	<i>Quercus bicolor</i>	Swamp White Oak	2	Good	Preserve	NO
4	<i>Quercus rubra</i>	Red Oak	2	Good	Preserve	NO
5	<i>Picea pungens</i>	Colorado Blue Spruce	15	Good	Remove	YES
6	<i>Picea abies</i>	Norway Spruce	15	Good	Remove	YES
7	<i>Picea pungens</i>	Colorado Blue Spruce	21	Good	Remove	YES
8	<i>Qercis canadensis</i>	Redbud	3	Good	Remove	NO
9	<i>Qercis canadensis</i>	Redbud	3	Good	Remove	NO
10	<i>Qercis canadensis</i>	Redbud	3	Good	Remove	NO
11	<i>Qercis canadensis</i>	Redbud	3	Good	Remove	NO
12	<i>Qercis canadensis</i>	Redbud	3	Good	Remove	NO
13	<i>Pyrus calleryana</i>	Bradford Pear	3	Poor	Remove	NO
14	<i>Quercus alba</i>	White Oak	16	Good	Remove	YES
15	<i>Quercus rubra</i>	Red Oak	3	Good	Relocate	NO
16	<i>Quercus rubra</i>	Red Oak	3	Good	Remove	NO
17	<i>Quercus rubra</i>	Red Oak	3	Good	Remove	NO
18	<i>Juniperus virginiana</i>	Eastern Red Cedar	2	Good	Remove	NO
19	<i>Juniperus virginiana</i>	Eastern Red Cedar	2	Good	Remove	NO
20	<i>Juniperus virginiana</i>	Eastern Red Cedar	2	Good	Remove	NO
21	<i>Gymnocladus dioica</i>	Kentucky Coffeetree	11	Good	Preserve	YES
22	<i>Quercus alba</i>	White Oak	15	Good	Preserve	YES
23	<i>Pinus strobus</i>	Eastern White Pine	21	Good	Preserve	YES
24	<i>Quercus rubra</i>	Red Oak	15	Good	Preserve	YES
25	<i>Quercus alba</i>	White Oak	48	Good	Preserve	YES
26	<i>Ulmus americana</i> "Princeton"	Princeton Elm	2	Good	Preserve	YES
27	<i>Ulmus americana</i> "Princeton"	Princeton Elm	2	Good	Preserve	YES
28	<i>Quercus rubra</i>	Red Oak	13	Good	Preserve	YES
29	<i>Quercus palustris</i>	Pin Oak	4	Good	Preserve	NO
30	<i>Ginkgo biloba</i>	Ginkgo	18	Good	Preserve	YES
31	<i>Ginkgo biloba</i>	Ginkgo	18	Good	Preserve	YES
32	<i>Acer platanoides</i>	Norway Maple	6	Good	Preserve	NO
33	<i>Quercus palustris</i>	Pin Oak	6	Good	Preserve	YES
34	<i>Acer platanoides</i>	Norway Maple	16	Good	Preserve	YES
35	<i>Acer platanoides</i>	Norway Maple	10	Good	Preserve	YES
Total Significant Trees on Site (DBH)						334
Total Significant Trees Preserved (DBH)						265
Requirement						33%
% Preserved						79.34%

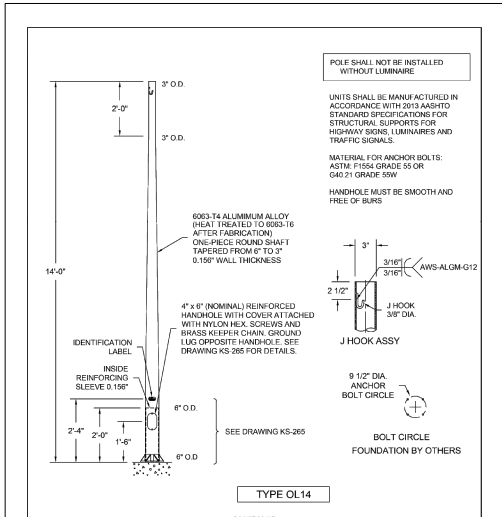
NOTE:
PER THE TREE PRESERVATION STANDARDS OF UDD 18.30.240, NO REPLACEMENT TREES ARE REQUIRED; CALCULATIONS BASED ON PRESERVATION OF TOTAL CALIPER INCHES VS TOTAL CALIPER INCHES PRESENT PRIOR TO CONSTRUCTION. IF CALCULATIONS ARE TO BE MADE BY SHEER NUMBER OF TREES ALONE:
18 SIGNIFICANT TREES ON SITE
4 OF THEM ARE TO BE REMOVED
14 / 18 = 77% OF SIGNIFICANT TREES PRESERVED



1 Tree Preservation Plan

Scale: 1" = 30'-0"





TYPE OL14

NO.	DESCRIPTION	DATE
1	ISSUED FOR CONSTRUCTION	11/16/2025

D-Series Size 1 Amber Series LED Area Luminaire

Specifications

- EPA: 0.67 ft² (0.61 m²)
- Length: 32.71" (831.6 mm)
- Width: 14.26" (362.0 mm)
- Height H1: 7.88" (200.0 mm)
- Height H2: 2.73" (69.3 mm)
- Weight: 34 lbs (15.4 kg)

Introduction

The modern styling of the D-Series features a highly refined aesthetic that blends seamlessly with its environment. The D-Series offers the benefits of the latest in Amber LED technology into a high performance, high efficacy, long-life luminaire.

The photometric performance results in sites with excellent uniformity, greater pole spacing and lower power density. D-Series outstanding photometry aids in reducing the number of poles required in area lighting applications.

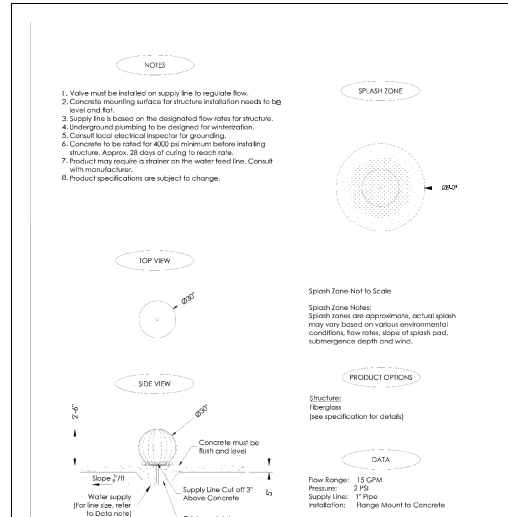
Ordering Information

EXAMPLE: DSX1 LED P7 AMBPC AMCR1 T3M MVOLT SPA NTAIR2 PRHN DDBD

OPTION	DESCRIPTION	REMARKS
DSX1	Forward optics	
P7	Amber	
AMBPC	Amber	
AMCR1	Amber	
T3M	Amber	
MVOLT	Amber	
SPA	Amber	
NTAIR2	Amber	
PRHN	Amber	
DDBD	Amber	

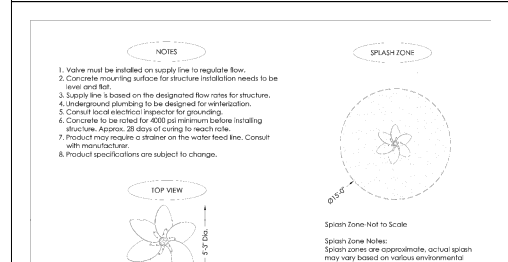
Legend

SYMBOL	DESCRIPTION	REMARKS
DSX1	Forward optics	
P7	Amber	
AMBPC	Amber	
AMCR1	Amber	
T3M	Amber	
MVOLT	Amber	
SPA	Amber	
NTAIR2	Amber	
PRHN	Amber	
DDBD	Amber	



WATER GLOBE

NO.	DESCRIPTION	DATE
1	ISSUED FOR CONSTRUCTION	11/16/2025

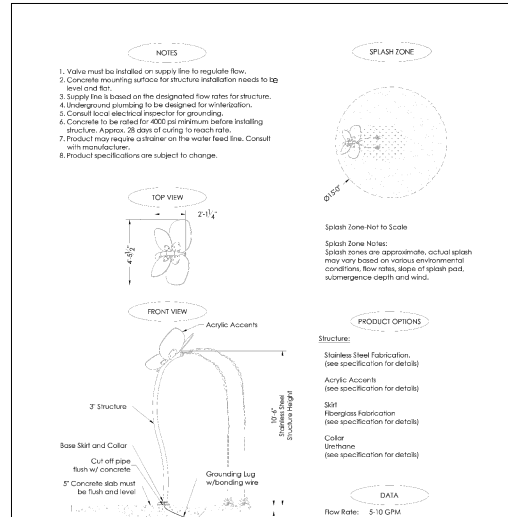


WATER GLOBE

NO.	DESCRIPTION	DATE
1	ISSUED FOR CONSTRUCTION	11/16/2025

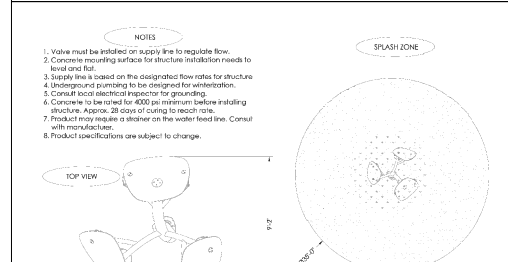
Legend

SYMBOL	DESCRIPTION	REMARKS
DSX1	Forward optics	
P7	Amber	
AMBPC	Amber	
AMCR1	Amber	
T3M	Amber	
MVOLT	Amber	
SPA	Amber	
NTAIR2	Amber	
PRHN	Amber	
DDBD	Amber	



WATER GLOBE

NO.	DESCRIPTION	DATE
1	ISSUED FOR CONSTRUCTION	11/16/2025



WATER GLOBE

NO.	DESCRIPTION	DATE
1	ISSUED FOR CONSTRUCTION	11/16/2025

Legend

SYMBOL	DESCRIPTION	REMARKS
DSX1	Forward optics	
P7	Amber	
AMBPC	Amber	
AMCR1	Amber	
T3M	Amber	
MVOLT	Amber	
SPA	Amber	
NTAIR2	Amber	
PRHN	Amber	
DDBD	Amber	