



HOMWOOD SUITES BY HILTON **EXTERIOR RENDERING**

OLATHE, KS

DESIGN REPRESENTATION ONLY - NOT FOR CONSTRUCTION
 The building images shown are a representation of the current design intent only. The building images may not reflect variations in color, tone, hue, tint, shading, ambient light intensity, materials, texture, contrast, font, style, construction variations required by building codes or inspectors, material availability or final design detailing.

A1

09/10/25



HOMewood SUITES BY HILTON

EXTERIOR RENDERING

OLATHE, KS

DESIGN REPRESENTATION ONLY - NOT FOR CONSTRUCTION
The building images shown are a representation of the current design intent only. The building images may not reflect variations in color, tone, hue, tint, shading, ambient light intensity, materials, texture, contrast, font, style, construction variations required by building codes or inspectors, material availability or final design detailing.

CLASS 1 MATERIAL: MODULAR BRICK
MFR: ENDICOTT BRICK (OR APPROVED EQUAL)
COLOR: MANGANESE IRONSPOT - VERTICAL SCORE



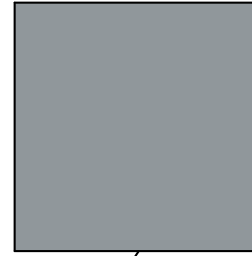
CLASS 1 MATERIAL: MODULAR BRICK
MFR: ENDICOTT BRICK
COLOR: MANGANESE IRONSPOT - VELOUR



CLASS 1 MATERIAL: ONE COAT STUCCO
(NO EIFS ALLOWED)
MFR: DRYVIT (OR APPROVED EQUAL)
COLOR: SW 7071 GRAY SCREEN



CLASS 1 MATERIAL: ONE COAT STUCCO
(NO EIFS ALLOWED)
MFR: DRYVIT (OR APPROVED EQUAL)
COLOR: SW 7664 STEELY GRAY



CLASS 3 MATERIAL: METAL PANEL SYSTEM
WITH CONCEALED FASTENERS
MFR: QUICK PANEL (OR APPROVED EQUAL)
COLOR: SW 6258 TRICORN BLACK



CLASS 3 MATERIAL: WOOD LOOK
CEMENTITIOUS PANELS
MFR: NICHHA (OR APPROVED EQUAL)
COLOR: ASH



1 EAST ELEVATION (PRIMARY FACADE)
3/32" = 1'-0"



HOMEWOOD SUITES BY HILTON

EXTERIOR ELEVATIONS AND MATERIALS

OLATHE, KS

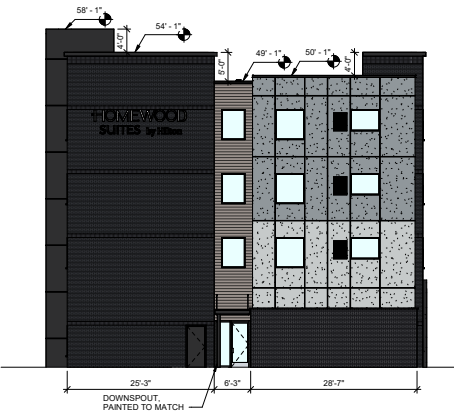
DESIGN REPRESENTATION ONLY - NOT FOR CONSTRUCTION
The building images shown are a representation of the current design intent only. The building images may not reflect variations in color, tone, hue, tint, shading, ambient light intensity, materials, texture, contrast, font, style, construction variations required by building codes or inspectors, material availability or final design detailing.

EXTERIOR MATERIAL PERCENTAGES

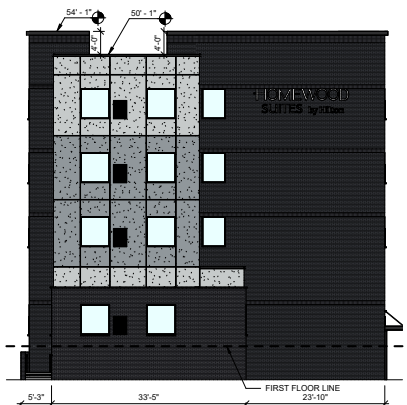
	Front (East) (Primary Façade)	Rear(West) (Primary Façade)	North (Primary Façade)	South (Primary Façade)	Total	
Class 3	15,711	85.2%	17,389	97.1%	3,001	95.8%
Brick	7,941	39.8%	7,590	42.4%	802	25.6%
Dryvit One Coat Stucco	5,961	29.6%	7,043	39.3%	1,964	62.7%
Glazing	2,900	15.8%	2,756	15.4%	235	7.5%
Class 3	2,737	14.8%	518	2.9%	130	4.2%
Niche Cement Fiber Board	2,114	11.5%	360	2.0%	130	4.2%
Metal Panel (Concealed Fastener)	623	3.4%	158	0.9%	0	0.0%
Total	18,448		17,907		3,191	

	Front (East) (Primary Façade)	Rear(West) (Primary Façade)	North (Primary Façade)	South (Primary Façade)	Total	
First Floor	5,749	31.2%	5,734	32.0%	924	29.5%
Solid Material	4,671	81.2%	6,761	83.0%	884	95.7%
Glazing	1,078	18.8%	973	17.0%	40	4.3%
Upper Floors	12,699	68.8%	12,173	68.0%	2,267	70.3%
Solid Material	10,869	85.6%	10,390	85.4%	2,012	91.2%
Glazing	1,831	14.4%	1,783	14.6%	195	8.8%
Total	18,448		17,907		3,191	

CLASS 2 ROOFING MATERIAL (TPO MEMBRANE-NOT VISIBLE) USED FOR BUILDING ROOF



2 NORTH ELEVATION (PRIMARY FAÇADE)



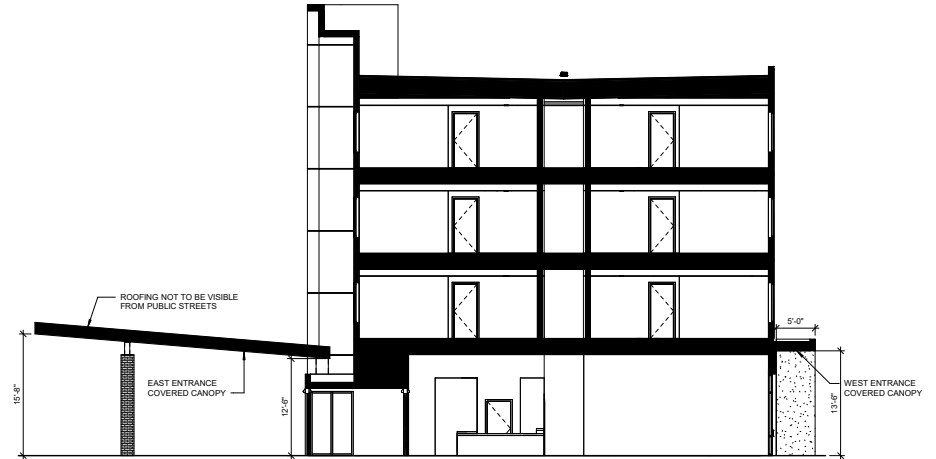
1 SOUTH ELEVATION (PRIMARY FAÇADE)



3 WEST ELEVATION (PRIMARY FAÇADE)



2 ENLARGED ENTRANCE CANOPY ELEVATION
1/4" = 1'-0" REF: A3 / 1



1 BUILDING SECTION THROUGH LOBBY
1/8" = 1'-0"



HOMWOOD SUITES BY HILTON

BUILDING SECTION AND RENDERINGS

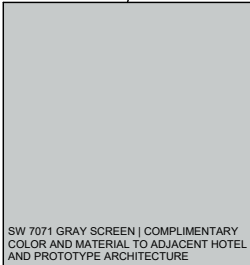
OLATHE, KS

DESIGN REPRESENTATION ONLY - NOT FOR CONSTRUCTION
The building images shown are a representation of the current design intent only. The building images may not reflect variations in color, tone, hue, tint, shading, ambient light intensity, materials, texture, contrast, font, style, construction variations required by building codes or inspectors, material availability or final design detailing.

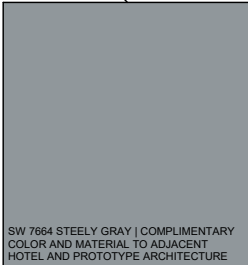


MATERIAL STUDY PROVIDED TO SHOW HOW THE SELECTED MATERIALS ON THE PROJECT BLEND BETWEEN THE ADJACENT SITE CONTEXT OF OLATHE STATION AS WELL AS MEETING THE BRAND STANDARDS FOR THE PROTOTYPE DESIGN. STUCCO, BRICK, METAL PANEL, AND WOOD LOOK PANELS ARE ALL USED THROUGHOUT OLATHE STATION AND THE HOMWOOD SUITES BY HILTON PROTOTYPE. MATERIAL COLORS ARE COMPLIMENTARY TO EXISTING BUILDINGS IN THE SURROUNDING AREA AND MEET THE OWNER/BRAND REQUIREMENTS FOR THE PROTOTYPE. CLASS 1 AND CLASS 2 MATERIALS PROVIDED ON BUILDING TO MEET UDO PERCENTAGE REQUIREMENTS, REFERENCE SHEET A3 FOR MATERIAL BREAKDOWN PERCENTAGES.

WOOD LOOK PANEL | COMPLIMENTARY MATERIAL TO ADJACENT BUILDING



SW 7071 GRAY SCREEN | COMPLIMENTARY COLOR AND MATERIAL TO ADJACENT HOTEL AND PROTOTYPE ARCHITECTURE



SW 7664 STEELY GRAY | COMPLIMENTARY COLOR AND MATERIAL TO ADJACENT HOTEL AND PROTOTYPE ARCHITECTURE



BRICK - MANGANESE IRONSPOT | COMPLIMENTARY COLOR SCHEME TO ADJACENT BUILDING



BRICK - MANGANESE IRONSPOT | COMPLIMENTARY COLOR SCHEME TO ADJACENT BUILDING



BRICK - MANGANESE IRONSPOT | COMPLIMENTARY COLOR SCHEME TO PROTOTYPE ARCHITECTURE



SW 6258 TRICORN BLACK | COMPLIMENTARY COLOR SCHEME TO ADJACENT BUILDING



SW 6258 TRICORN BLACK | COMPLIMENTARY COLOR SCHEME TO ADJACENT BUILDING



SW 6258 TRICORN BLACK | COMPLIMENTARY COLOR SCHEME TO PROTOTYPE ARCHITECTURE



HOMWOOD SUITES BY HILTON MATERIAL PRECEDENT STUDY

OLATHE, KS

DESIGN REPRESENTATION ONLY - NOT FOR CONSTRUCTION
The building images shown are a representation of the current design intent only. The building images may not reflect variations in color, tone, hue, tint, shading, ambient light intensity, materials, texture, contrast, font, style, construction variations required by building codes or inspectors, material availability or final design detailing.