

Existing Tree Survey

Caliper Inches to be Saved	242 (35%)
Caliper Inches to be Removed	456 (65%)
TOTAL	698 (100%)

Proposed Tree Calculations

Existing to Remain	242 (35%)
Deciduous Trees (18 @ 2.5")	45 (6%)
Evergreen Trees (0 @ 2.5")	0 (0%)
Ornamental Trees (0 @ 1.5")	0 (0%)

TOTAL PRESERVED/MITIGATED 287 cal. in.
(41% of total existing caliper inches)

Tree Preservation

Required: 30% of significant trees preserved (up to 90% of sig. trees mitigated) for multi-family and nonresidential uses*

Provided:

Total Existing: 698 cal. in. @ 30% = 209 cal. in.

Existing to be preserved	269 cal. in. (35%)
Proposed trees	45 cal. in. (6%)
Total preserved/mitigated	287 cal. in. (41.0%)

LEGEND:

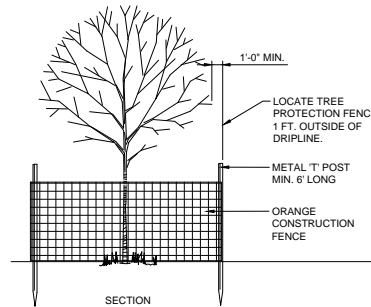
	EXISTING TREE TO REMAIN
	EXISTING TREE TO BE REMOVED

NOTE:

All trees within limits of construction to be protected. Contractor is responsible for the protection of all trees designated to be preserved on site until construction is complete.

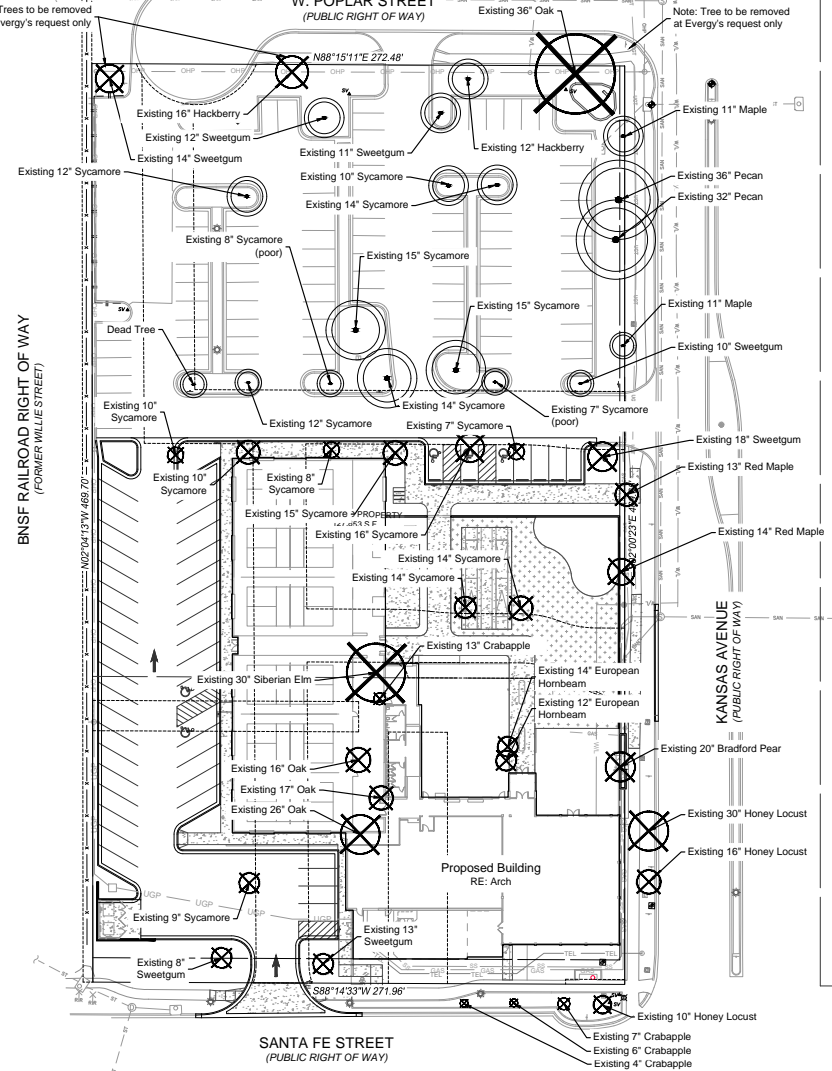
NOTES:

- CONSTRUCTION FENCE SHALL BE INSTALLED PRIOR TO CONSTRUCTION OPERATIONS
- CONTRACTOR SHALL BE RESPONSIBLE FOR FENCE MAINTENANCE, REPAIR AND/OR REPLACE ALL SECTIONS DAMAGED DURING CONSTRUCTION OPERATIONS
- CONTRACTOR SHALL BE RESPONSIBLE FOR HEALTH OF PROTECTED TREES THROUGHOUT THE CONSTRUCTION PERIOD. TREES SHOWING SIGNS OF STRESS SHALL BE BROUGHT TO THE ATTENTION OF THE OWNERS REPRESENTATIVE IMMEDIATELY. ALL TREES THAT DIE DUE TO CONSTRUCTION OPERATIONS SHALL BE REPLACED AT THE CONTRACTORS EXPENSE. THE REPLACEMENT TREE SHALL BE OF COMPARABLE SIZE & SPECIES BASED ON NURSERY AVAILABILITY. CONTRACTOR SHALL SUBMIT REPLACEMENT TREES TO OWNERS REPRESENTATIVE FOR FINAL ACCEPTANCE PRIOR TO INSTALLATION.



TREE PROTECTION DETAIL - NTS

Note: Trees to be removed at Evergy's request only



SANTA FE STREET
(PUBLIC RIGHT OF WAY)



35 Collection

Product Data Sheet

landscapeforms



Loop

- Loop chair rack is a simple, swinging chair with a belt.
- Both functional and sculptural.
- Cylinders can loop and lock one or two belts around to shape-shifting cast aluminum ribbon frame.
- The aluminum casting, finished with Pongard IP powdercoat, is offered in a selection of colors. Must be pre-treated by a concrete surface.
- Refer to metal guide for spacing guidelines.
- Meets AIAA guidelines.

Metal Finishes

- All metal is finished with Pongard IP, offered exclusively by Landscape Forms, a 10-step process of cleaning, priming, and powder coating that resists rusting, chipping, peeling and fading to produce the finest metal finish available for site furniture.
- In addition, Pongard IP contains no heavy metals and is free of Chlorinated Air Pollutants.
- Call for standard color chart.

Recycled Content

- Loop has a recycled content of 97% and is 100% recyclable.

To Specify

- Specify collection name and product name.

Guide

Please refer to the product data sheet for technical information and specifications.
http://www.landscapeforms.com/en-US/Product-Detail/F_35Guide.
ProductData.pdf

Designed by frog design

[Click here](#) for patent information related to this product.

Style	Depth	Length	Height	Product Weight
Blue Rock	14"	30"	30"	25 lbs

Visit www.landscapeforms.com for more information. Specifications are subject to change without notice. Landscape Forms supports the Landscape Architecture Foundation at the Second Century level.
©2020 Landscape Forms, Inc. Printed in U.S.A. All Rights Reserved.

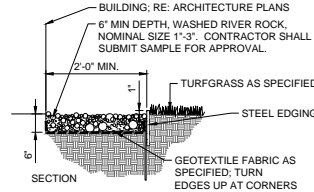
landscapeforms.com | spec@landscapeforms.com

6 Revised January 07, 2020 | Landscape Forms Inc. | 800.521.2548 | F 269.381.3455 | 7800 E. Morgan Ave., Kalamazoo, MI 49008



UTILITY BOXES SHALL BE CLUSTERED AS MUCH AS POSSIBLE

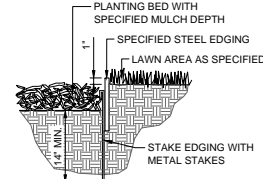
TYPICAL UTILITY BOX SCREENING DETAILS - NTS



NOTES:

1. SET ALL EDGING 1" ABOVE FINISH GRADE AS SHOWN.
2. EDGING SHALL ABUT ALL CONCRETE CURBS AND WALKS PERPENDICULAR AND FLUSH WITH TOP OF CONCRETE
3. ALL JOINTS SHALL BE SECURELY STAKED
4. CONTRACTOR SHALL CUT TOP EDGES AS NEEDED TO BE PARALLEL WITH GRADE.
5. ALL GRAVEL SHALL BE INSTALLED OVER A GEOTEXTILE FABRIC (MIRAFI 140N OR APPROVED EQUAL).
6. GRAVEL SHALL BE APPROVED BY OWNER PRIOR TO INSTALLATION. FILTER FABRIC SHALL NOT BE VISIBLE AFTER GRAVEL INSTALLATION.

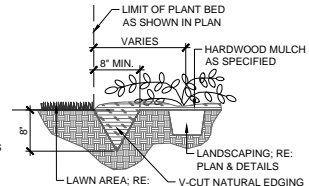
MOW EDGE DETAIL - NTS



NOTES:

1. EDGING PER SPECIFICATIONS. SET ALL EDGING 1" ABOVE FINISH GRADE (TURF) SURFACE AS SHOWN.
2. EDGING SHALL ABUT ALL CONCRETE CURBS AND WALKS PERPENDICULAR AND FLUSH WITH TOP OF CONCRETE.
3. ALL JOINTS SHALL BE SECURELY STAKED.
4. FINISH SHALL BE POWDER COAT, COLOR: GREEN. CONTRACTOR SHALL SUBMIT COLOR SAMPLE TO OWNERS REPRESENTATIVE PRIOR TO PURCHASE.
5. CONTRACTOR SHALL LOCATE AND MARK ALL PLANT BED LOCATIONS PRIOR TO INSTALLATION OF STEEL FOR FINAL APPROVAL BY OWNER OR LANDSCAPE ARCHITECT.

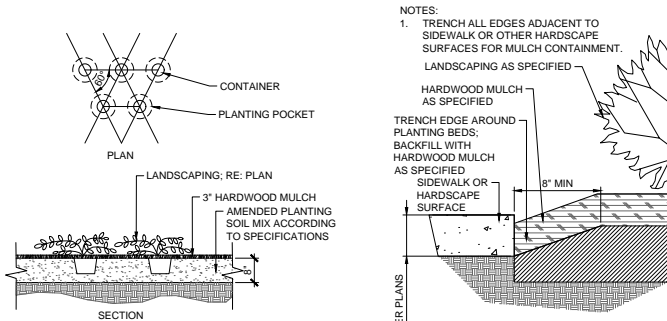
STEEL EDGING DETAIL - NTS



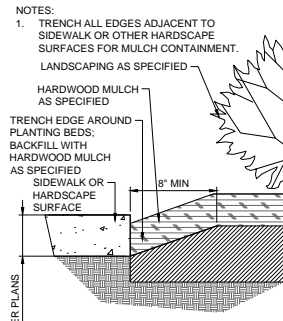
V-CUT NATURAL EDGE DETAIL - NTS

NOTES:

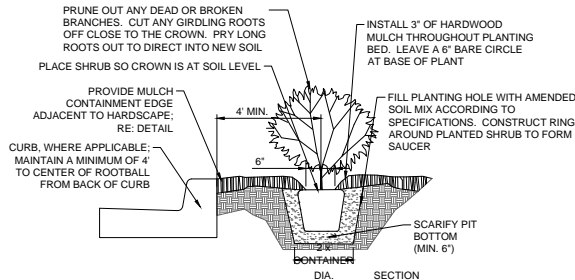
1. TREES THAT DO NOT MEET THE SIZE REQUIREMENT WILL BE REJECTED
2. TREES SHALL BE INSPECTED BY OWNERS REPRESENTATIVE PRIOR TO INSTALLATION.



CONTAINER PLANTING DETAIL - NTS



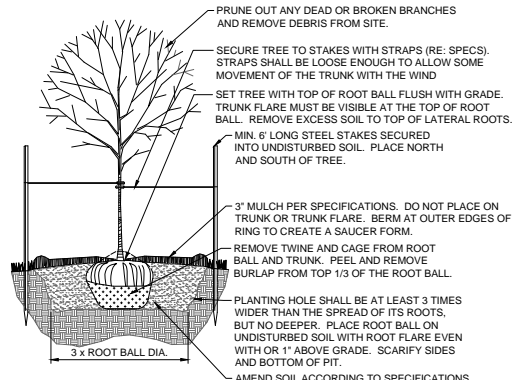
MULCH CONTAINMENT DETAIL - NTS



NOTES:

1. REFER TO SPECIFICATIONS FOR TOPSOIL BACKFILL MIX.
2. CONTRACTOR TO WATER THOROUGHLY AFTER PLANTING
3. INSTALLATION TO BE IN ACCORDANCE WITH PLANTING SPECIFICATIONS
4. WHERE ADJACENT TO CURB, MAINTAIN THE MINIMUM OFFSET SHOWN. FOR SHRUBS LARGER THAN 4" MATURE DIAMETER, PROVIDE A GREATER OFFSET EQUAL TO 1/2 OF THE MATURE DIAMETER MINIMUM.

SHRUB PLANTING DETAIL - NTS



DECIDUOUS TREE PLANTING DETAIL - NTS

Preliminary Development Plans

25-0118

Char Bar Olathe

Olathe, Johnson County, Kansas

Landscape Details

NO DATE REVISION

DRAWN BY CHECKED BY

1 04/03/2020 Per City Comments

2 04/03/2020 Per City Comments

3 04/03/2020 Initial Designer

4 04/03/2020 Initial Designer

5 04/03/2020 Initial Designer

6 04/03/2020 Initial Designer

7 04/03/2020 Initial Designer

8 04/03/2020 Initial Designer

9 04/03/2020 Initial Designer

10 04/03/2020 Initial Designer

11 04/03/2020 Initial Designer

12 04/03/2020 Initial Designer

13 04/03/2020 Initial Designer

14 04/03/2020 Initial Designer

15 04/03/2020 Initial Designer

16 04/03/2020 Initial Designer

17 04/03/2020 Initial Designer

18 04/03/2020 Initial Designer

19 04/03/2020 Initial Designer

20 04/03/2020 Initial Designer

21 04/03/2020 Initial Designer

22 04/03/2020 Initial Designer

23 04/03/2020 Initial Designer

24 04/03/2020 Initial Designer

25 04/03/2020 Initial Designer

26 04/03/2020 Initial Designer

27 04/03/2020 Initial Designer

28 04/03/2020 Initial Designer

29 04/03/2020 Initial Designer

30 04/03/2020 Initial Designer

Sheet

L03

800.500.0950

400 E. 17th Street

Kansas City, Missouri 64108

NS Certificate of Authority

E-1814

www.rca-consult.com

REnaissance Infrastructure Consulting

NS Certificate of Authority