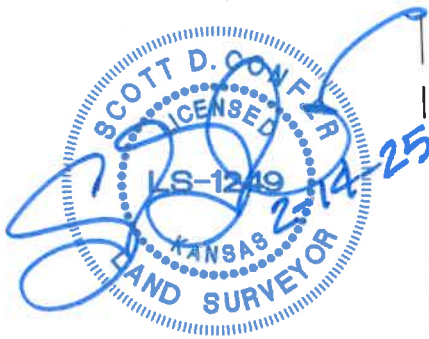
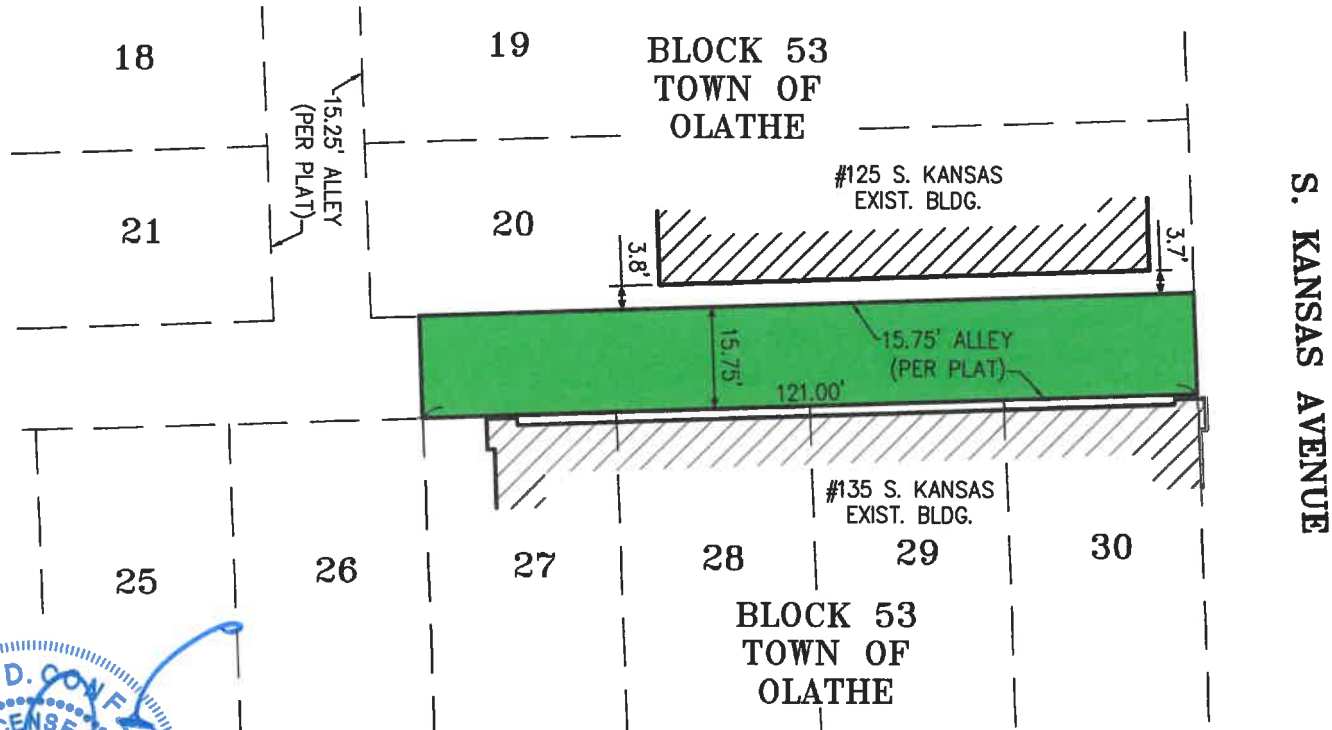


EXHIBIT "A"

ALLEY VACATION DESCRIPTION:

ALL THAT PART OF THE ALLEY LYING NORTH OF AND ADJACENT TO THE NORTH LINE OF LOTS 27, 28, 29 AND 30, BLOCK 53, TOWN OF OLATHE, A SUBDIVISION IN THE CITY OF OLATHE, JOHNSON COUNTY, KANSAS, ACCORDING TO THE PLAT RECORDED IN BOOK 1 AT PAGE 1, IN THE OFFICE OF THE REGISTER OF DEEDS, JOHNSON COUNTY, KANSAS.



\\PHELPS-SERVER\Projects\P\240998\dwg\SUR 240998.dwg Layout: ALLEY VACATION Feb 14, 2025 - 3:33pm Scott Confer



PLANNING
ENGINEERING
IMPLEMENTATION

PHELPS ENGINEERING, INC
1270 N. Winchester
Olathe, Kansas 66061

(913) 393-1155
Fax (913) 393-1166
www.phelpsengineering.com

CERTIFICATE OF AUTHORIZATION KANSAS LAND
SURVEYING - LS-82
ENGINEERING - E-391
CERTIFICATE OF AUTHORIZATION MISSOURI
LAND SURVEYING-2007001128
ENGINEERING-2007005058

PROJECT NO. 240998
DATE: 2-14-25
BY: adc