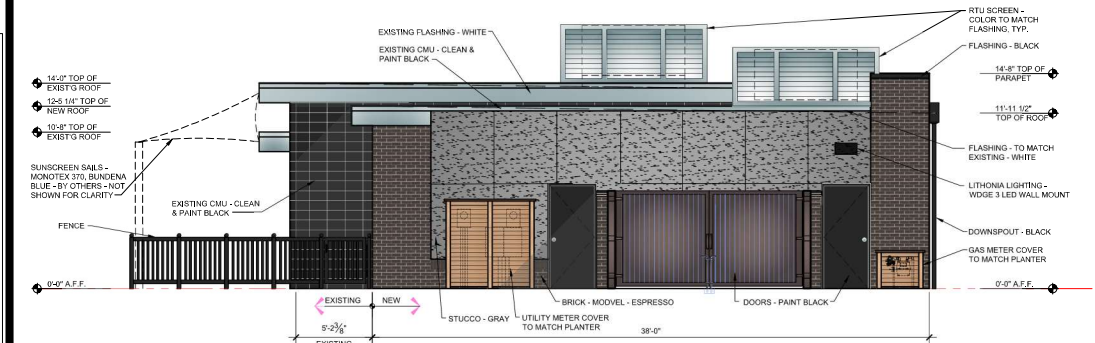


**1 EAST EXTERIOR ELEVATION**  
SCALE: 1/4" = 1'-0"



**2 SOUTH EXTERIOR ELEVATION**  
SCALE: 1/4" = 1'-0"

EAST ELEVATION - MATERIAL PERCENTAGES

NUMBER	MATERIAL	MANUFACTURER	STYLE	COLOR	SQ FT	%
1	CMU - CLASS 4	EXISTING	--	BLACK	29.01	0.02%
2	GLASS	EXISTING	--	CLEAR	0.00	0.00%
3	BRICK	ACME BRICK	MOOVEL	ESPRESSO	376.17	0.31%
4	STUCCO	TBD	TBD	GRAY	751.27	0.61%
5	WOOD TRIM	EXISTING	--	WHITE	3.09	0.01%
6	METAL CAP FLASHING	EXISTING	--	WHITE	12.1	0.01%
7	WOOD TRIM	TBD	--	WHITE	0.00	0.00%
8	METAL CAP FLASHING	TBD	--	WHITE	31.14	0.03%
9	METAL DOOR	TBD	TBD	BLACK	23.89	0.02%
				TOTALS	1,226.67	100.00%

SOUTH ELEVATION - MATERIAL PERCENTAGES

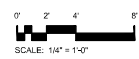
NUMBER	MATERIAL	MANUFACTURER	STYLE	COLOR	SQ FT	%
1	CMU - CLASS 4	EXISTING	--	BLACK	75.11	0.12%
2	GLASS	EXISTING	--	CLEAR	0.00	0.00%
3	BRICK	ACME BRICK	MOOVEL	ESPRESSO	130.20	0.21%
4	STUCCO	TBD	TBD	GRAY	215.12	0.35%
5	WOOD TRIM	EXISTING	--	WHITE	35.14	0.06%
6	METAL CAP FLASHING	EXISTING	--	WHITE	12.04	0.02%
7	WOOD TRIM	TBD	--	WHITE	5.42	0.01%
8	METAL CAP FLASHING	TBD	--	WHITE	13.63	0.02%
9	METAL DOOR	TBD	TBD	BLACK	47.78	0.08%
10	METAL GATE	TBD	TBD	BLACK	71.00	0.12%
				TOTALS	696.44	100.00%

MATERIAL CLASS				
	1	2	3	4
0.02%				
0.00%				
0.31%				
0.61%				
				0.01%
				0.01%
				0.00
				0.03%
				0.02%
0.84%	0.00%	0.00%	0.00%	0.97%

MATERIAL CLASS				
	1	2	3	4
0.12%				
0.00%				
0.21%				
0.35%				
				0.06%
				0.02%
				0.01%
				0.02%
				0.08%
0.88%	0.00%	0.00%	0.00%	0.31%

**NOTES:**  
 a. All exterior ground mounted and all roof top building HVAC and mechanical equipment, vents, piping, roof access ladders, and utility meters must be located out of view or otherwise screened from public view. Screening must be accomplished with landscape screen walls, building elements, or a combination of these methods.  
 b. Signage is approved by a separate application and is subject to the requirements of UDO 18.50.190.



10.21.2024

**NOLTE & ASSOCIATES, P.A.**  
 ARCHITECTS / PLANNERS

9400 REEDS ROAD, SUITE 200  
 OVERLAND PARK, KS 66207  
 PHONE: (913) 322-4444  
 FAX: (913) 322-6777

Copyright © 2024

---

BUILDING ADDITION & REMODEL FOR:

**PIZZA 51**

200 S. Kansas Ave  
 Olathe, Kansas 66061

The licensed architect hereby certifies that the work shown on these drawings was prepared by the architect or under the direct supervision and professional seal of the architect.

---

DATE PRINTED:  
 21 OCTOBER 2024

---

DATE RELEASED:  
 10.16.24

---

REVISIONS:  
 10.16.24 REVIEW COMMENTS  
 10.21.24 REVIEW COMMENTS

---

ARCHITECTURAL PROJECT NUMBER:  
 2024033

---

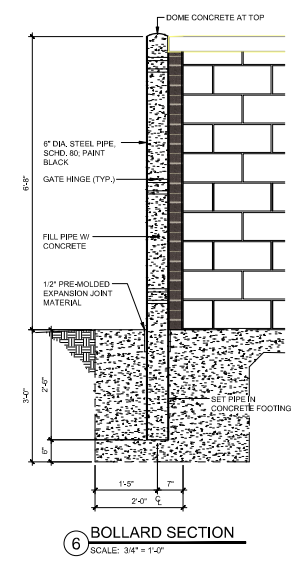
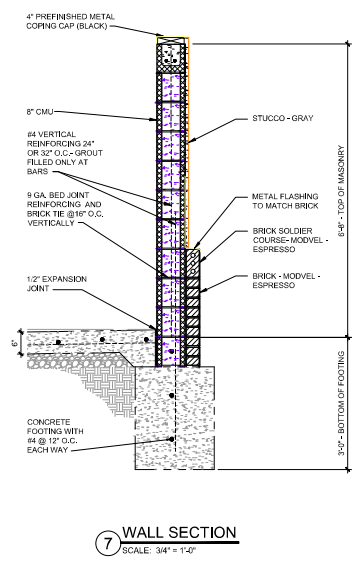
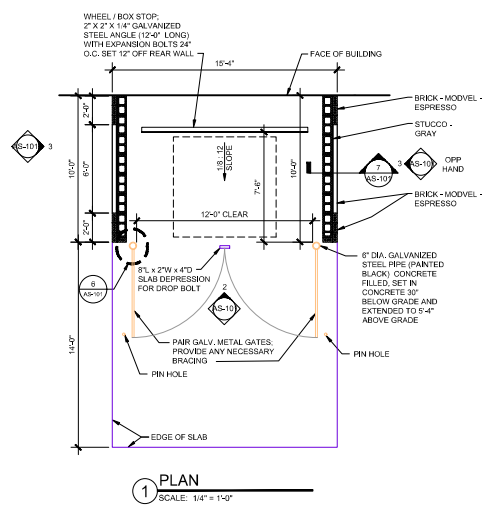
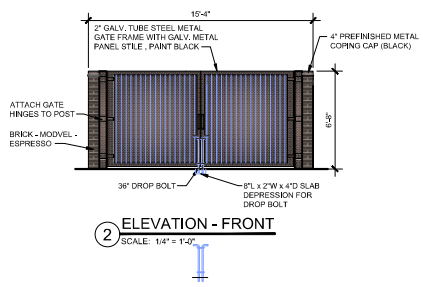
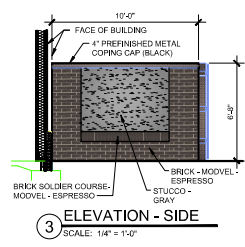
EXTERIOR ELEVATIONS

---

SHEET NUMBER:  
**A-202**



F:\2024\2024033 - Restaurant - Pizza 51\Production\04 - Construction Documents\2024033 AS-102 SITE AMENITIES.DWG





10.21.2024

**NOLTE & ASSOCIATES, P.A.**  
ARCHITECTS / PLANNERS

9400 REEDS ROAD, SUITE 200  
OVERLAND PARK, KS 66207  
TEL: (817) 322-4444  
FAX: (817) 322-6277



COPYRIGHT © 2024

---

**BUILDING ADDITION & REMODEL FOR:**

**PIZZA 51**

200 S. Kansas Ave  
Olathe, Kansas 66061

---

DATE PRINTED: 21 OCTOBER 2024
DATE ISSUED: 10.16.24
REVISIONS
▲ 10.16.24 REVIEW COMMENTS
▲ 10.21.24 REVIEW COMMENTS
ARCHITECTURAL PROJECT NUMBER: 2024033
SITE AMENITIES
SHEET NUMBER <b>AS-102</b>

