

1 NORTH ELEVATION
PRIMARY FACADE (1/3) SCALE: 3/8" = 1'-0"

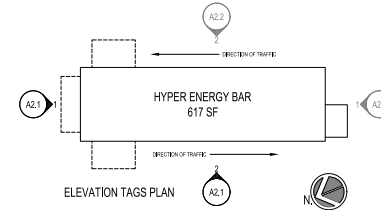
NORTH ELEVATION MATERIAL PERCENTAGES:			TOTAL BUILDING SF = 249 SF
MATERIAL	PERCENTAGE (%)	MATERIAL SF	
CLASS 1	97%	242 SF	
CLASS 2	0%	0 SF	
CLASS 3	0%	0 SF	
CLASS 4	3%	7 SF	

EXT. FINISH NORTH ELEVATION (PRIMARY FACADE)					
TAG:	MATERIAL:	DESCRIPTION:	CLASS:	AREA:	PERCENTAGE:
STU-1	STONE VENEER, NATURAL	FULL-VENEER MASONRY WALL SYSTEM, ELDORADO STONE - EUROPEAN LEDGE FINISH - CAW RIO ALEON	CLASS 1	30 SF	13 %
STU-4	STUCCO, GENUINE	TRADITIONAL PORTLAND CEMENT BASED STUCCO FINISH TO MATCH SHIP HIGHLIGHT FINISH	CLASS 1	0 SF	0 %
MTL-1	METAL WALL PANEL	HIGH-QUALITY INSULATED DECORATIVE METAL PANEL ALPOUC FINISH ORIENTAL CANE	CLASS 1	86 SF	34 %
MTL-2	METAL (CANOPY)	STANDARD METAL PAINTED FINISH BLACK	CLASS 4	7 SF	3 %
MTL-3	METAL	STANDARD METAL SENG AND TRIM COATED FINISH BLACK	CLASS 4	0 SF	0 %
GLS-1	CLEAR GLASS	CLEAR GLASS WITH NO TINT	CLASS 1	37 SF	15 %
GLS-2	SPANDREL GLASS	GLASS WITH OPAQUE TINTED COATING	CLASS 2	0 SF	0 %
STU-2	STUCCO, GENUINE	TRADITIONAL PORTLAND CEMENT BASED STUCCO FINISH BRIGHT WHITE	CLASS 1	86 SF	35 %
				TOTAL AREA:	249 SF 100 %

1) Table 15.15.02D-1, Permitted Building Finish Materials by Material Class
2) This commercial building uses a minimum of three (3) materials from Class 1

EXT. FINISH ELEVATION 2 (WEST, PRIMARY FACADE)					
TAG:	MATERIAL:	DESCRIPTION:	CLASS:	AREA:	PERCENTAGE:
STU-1	STONE VENEER, NATURAL	FULL-VENEER MASONRY WALL SYSTEM, ELDORADO STONE - EUROPEAN LEDGE FINISH - CAW RIO ALEON	CLASS 1	142 SF	22 %
STU-4	STUCCO, GENUINE	TRADITIONAL PORTLAND CEMENT BASED STUCCO FINISH TO MATCH SHIP HIGHLIGHT FINISH	CLASS 1	180 SF	27 %
MTL-1	METAL WALL PANEL	HIGH-QUALITY INSULATED DECORATIVE METAL PANEL ALPOUC FINISH ORIENTAL CANE	CLASS 1	79 SF	12 %
MTL-2	METAL (CANOPY)	STANDARD METAL PAINTED FINISH BLACK	CLASS 4	6 SF	1 %
MTL-3	METAL	STANDARD METAL SENG AND TRIM COATED FINISH BLACK	CLASS 4	0 SF	0 %
GLS-1	CLEAR GLASS	CLEAR GLASS WITH NO TINT	CLASS 1	40 SF	6 %
GLS-2	SPANDREL GLASS	GLASS WITH OPAQUE TINTED COATING	CLASS 2	93 SF	14 %
STU-2	STUCCO, GENUINE	TRADITIONAL PORTLAND CEMENT BASED STUCCO FINISH BRIGHT WHITE	CLASS 1	117 SF	18 %
				TOTAL AREA:	656 SF 100 %

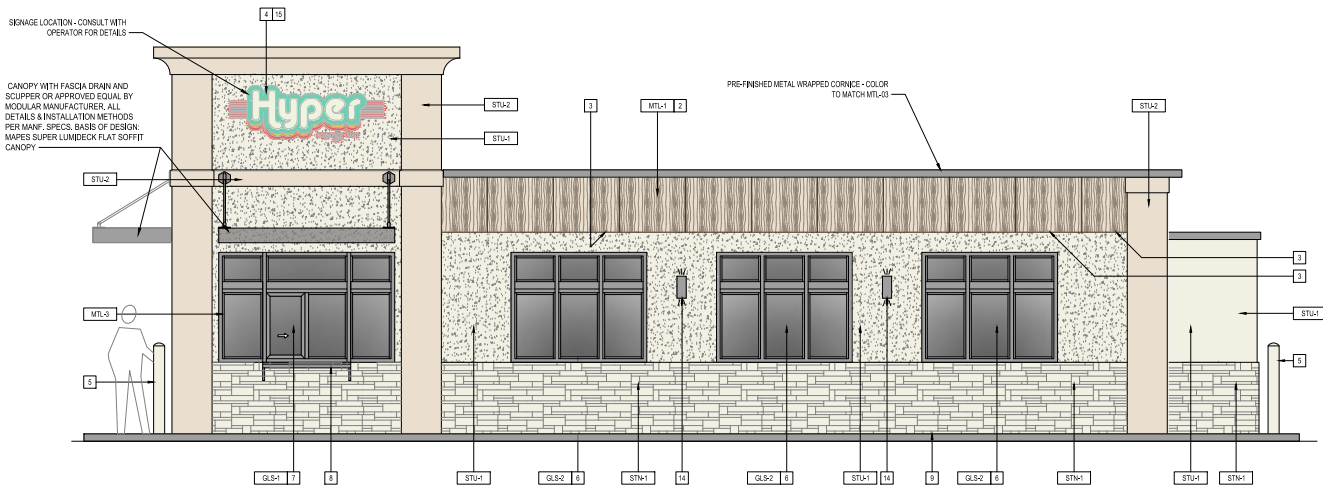
1) Table 15.15.02D-1, Permitted Building Finish Materials by Material Class
2) This commercial building uses a minimum of three (3) materials from Class 1



ELEVATION TAGS PLAN

Date:	...
Designed by:	HOAD
Drawn by:	EJS
Checked by:	DEO

ISSUED FOR REVIEW:	12/19/2024
Revisions:	
▲	
▲	
▲	
▲	
▲	
▲	
▲	



2 WEST ELEVATION
PRIMARY FACADE (2/3) SCALE: 3/8" = 1'-0"

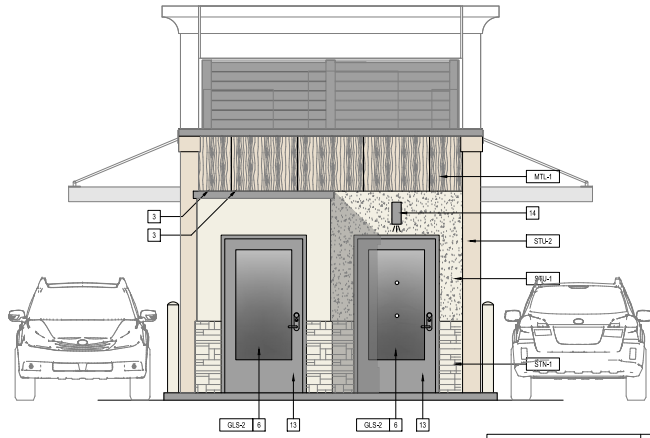
WEST ELEVATION MATERIAL PERCENTAGES:			TOTAL BUILDING SF = 656 SF
MATERIAL	PERCENTAGE (%)	MATERIAL SF	
CLASS 1	85%	557 SF	
CLASS 2	14%	93 SF	
CLASS 3	0%	0 SF	
CLASS 4	1%	6 SF	

EXTERIOR FINISH NOTES	
1	PRE-FABRICATED CANOPY EDGE DIMENSIONS TO BE VERIFIED IN-FIELD AND INSTALLATION TO BE COORDINATED BY GC.
2	SHAPE, SIZE AND DESIGN OF PANELS MAY VARY BETWEEN LOCATIONS AND MAY DEPEND ON LOCAL REQUIREMENTS.
3	WALL-WASH DOWNLIGHT ALONG BOTTOM PERIMETER OF PANELS.
4	INTERNALLY ILLUMINATED BUILDING SIGNAGE PROVIDED AND INSTALLED BY SIGN COMPANY. GC TO PROVIDE ELECTRICAL CONNECTION THROUGH FIBRE CONDUITS. THE SIGN COMPANY SHALL OBTAIN SIGNAGE PERMIT AND SUBMIT SUPPORTING DOCUMENTATION, AS PER LOCAL, CITY REQUIREMENT AND CODE. GC SHALL VERIFY ACTUAL LOCATION AND SIZE OF SIGN WITH SIGN COMPANY'S APPROVED DRAWINGS AND COORDINATE LOCATIONS OF BLOCKING AND UTILITIES. ALL ELEMENTS PROVIDED BY SIGN COMPANY TO BE REVIEWED BY OWNER PRIOR TO PRODUCTION AND INSTALLATION.
5	ALL BOLLARDS TO HAVE WHITE BOLLARD COVER WITH WHITE REFLECTIVE STRIPING.
6	WINDOW REFER TO WINDOW SCHEDULE.
7	SERVICE WINDOW REFER TO WINDOW SCHEDULE.
8	STAINLESS STEEL WALL MOUNT SHELF.
9	CONCRETE CURB ALONG DRIVE-THRU LANE.
10	RECEPTACLE, GFCI PROTECTED, WEATHER PROOF.
11	LOCATION OF HOSE ROLL.
12	LOCATION OF EMERGENCY KEY BOX / HOX BOX.
13	PANT TO MATCH COLOR OF METAL.
14	SURFACE MOUNT EGRESS LIGHT, BLACK FINTURE.
15	SIGNAGE IS APPROVED ADMINSTRATIVELY THROUGH A SEPARATE APPLICATION BY SIGNAGE INSTALLER AND MUST MEET THE REQUIREMENTS OF 100.16A.10.
16	ALL EXTERIOR GROUND MOUNTED AND ALL ROOFTOP BUILDING HVAC AND MECHANICAL EQUIPMENT, VENTS, FRING, ROOF ACCESS LADDERS, AND UTILITY METERS MUST BE LOCATED OUT OF VIEW OR OBTAIN SCREENING FROM PUBLIC VIEW. SCREENING MUST BE ACCOMPLISHED WITH LANDSCAPING, SCREEN WALLS, BUILDING ELEMENTS, OR A COMBINATION OF THESE METHODS.

HYPER ENERGY BAR
2250 W DARTMOUTH ST., OLATHE, KS 66061

© 2024 Heart of America Group | 514 E Locust St., Suite 100, DeS Moines, IA 50309 | 1501 River Drive, Moore, IL 61265 | Phone: 309.707.9300

Project No.	...
Sheet Content:	EXTERIOR ELEVATIONS NORTH & WEST
Sheet No.	A2.1



1 SOUTH ELEVATION
PRIMARY FACADE (3/3) SCALE: 3/8" = 1'-0"

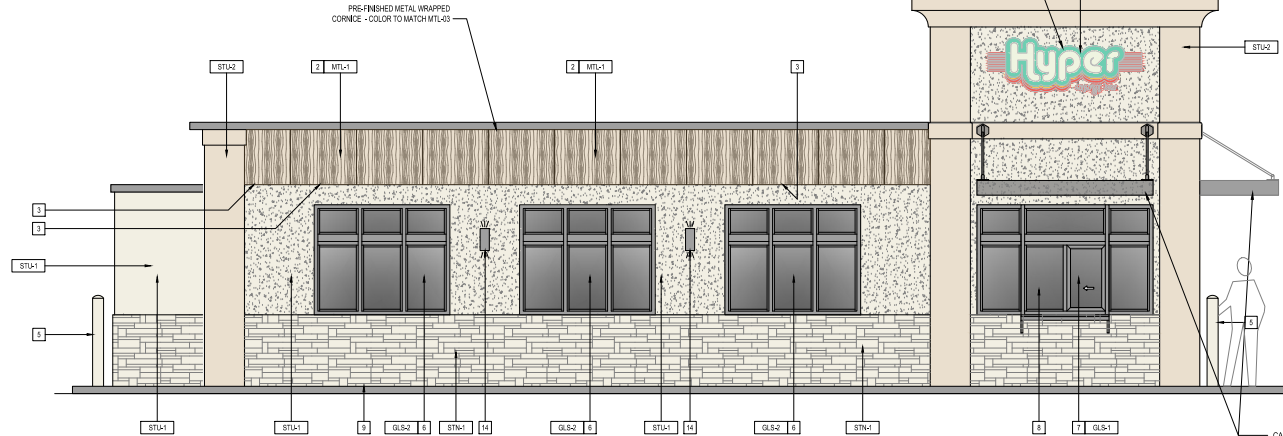
SOUTH ELEVATION MATERIAL PERCENTAGES:			TOTAL BUILDING SF = 164 SF
MATERIAL	PERCENTAGE (%)	MATERIAL SF	
CLASS 1	66%	108 SF	
CLASS 2	34%	56 SF	
CLASS 3	0%	0 SF	
CLASS 4	0%	0 SF	

EXT. FINISH ELEVATION 3 (SOUTH, PRIMARY FACADE)					
TAG	MATERIAL ¹	DESCRIPTION	CLASS ²	AREA	PERCENTAGE
STU-1	STONE VENEER, NATURAL	FULL-VENEER MASONRY WALL SYSTEM, ELORADO STONE - EUROPEAN LEDGE FINISH, GAW RD. ALEON	CLASS 1 (1 of 4)	14 SF	9%
STU-1	STUCCO, GENLINE	TRADITIONAL PORTLAND CEMENT BASED STUCCO FINISH BRIGHT WHITE	CLASS 1 (2 of 4)	35 SF	21%
MTL-1	METAL WALL PANEL	HIGH-QUALITY INSULATED DECORATIVE METAL PANEL, ALUMINUM FINISH, GAW RD. ALEON	CLASS 1 (3 of 4)	34 SF	21%
MTL-2	METAL (CANOPY)	STANDARD METAL, PAINTED FINISH BLACK	CLASS 4	0 SF	0%
MTL-3	METAL	STANDARD METAL SERRING AND TRIM, COATED FINISH BLACK	CLASS 4	0 SF	0%
GLS-1	CLEAR GLASS	CLEAR GLASS WITH NO TINT	CLASS 1 (4 of 4)	0 SF	0%
GLS-2	TINTED GLASS	GLASS WITH OPAQUE TINTED COATING	CLASS 2	56 SF	34%
STU-2	STUCCO, GENLINE	TRADITIONAL PORTLAND CEMENT BASED STUCCO FINISH BRIGHT WHITE	CLASS 1	25 SF	15%
TOTAL AREA				164 SF	100%

1) Table 16.15.020-1, Permitted Building Finish Materials by Material Class
2) This commercial building uses a minimum of three (3) materials from Class 1

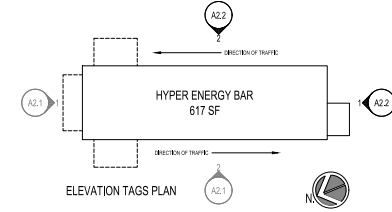
EXT. FINISH ELEVATION 2 (EAST)					
TAG	MATERIAL ¹	DESCRIPTION	CLASS ²	AREA	PERCENTAGE
STU-1	STONE VENEER, NATURAL	FULL-VENEER MASONRY WALL SYSTEM, ELORADO STONE - EUROPEAN LEDGE FINISH, GAW RD. ALEON	CLASS 1	142 SF	22%
STU-1	STUCCO, GENLINE	TRADITIONAL PORTLAND CEMENT BASED STUCCO FINISH TO MATCH SIGN FASLIGHT PASTER	CLASS 1	180 SF	27%
MTL-1	METAL WALL PANEL	HIGH-QUALITY INSULATED DECORATIVE METAL PANEL, ALUMINUM FINISH, ORIENTAL GAZE	CLASS 1	78 SF	12%
MTL-2	METAL (CANOPY)	STANDARD METAL, PAINTED FINISH BLACK	CLASS 4	6 SF	1%
MTL-3	METAL	STANDARD METAL SERRING AND TRIM, COATED FINISH BLACK	CLASS 4	0 SF	0%
GLS-1	CLEAR GLASS	CLEAR GLASS WITH NO TINT	CLASS 1	40 SF	6%
GLS-2	SPANDREL GLASS	GLASS WITH OPAQUE TINTED COATING	CLASS 2	93 SF	14%
STU-2	STUCCO, GENLINE	TRADITIONAL PORTLAND CEMENT BASED STUCCO FINISH BRIGHT WHITE	CLASS 1	117 SF	18%
TOTAL AREA				656 SF	100%

1) Table 16.15.020-1, Permitted Building Finish Materials by Material Class
2) This commercial building uses a minimum of three (3) materials from Class 1



2 EAST ELEVATION
SCALE: 3/8" = 1'-0"

EAST ELEVATION MATERIAL PERCENTAGES:			TOTAL BUILDING SF = 656 SF
MATERIAL	PERCENTAGE (%)	MATERIAL SF	
CLASS 1	85%	557 SF	
CLASS 2	14%	93 SF	
CLASS 3	0%	0 SF	
CLASS 4	1%	6 SF	



Date:	...
Designed by:	HOAD
Drawn by:	EJS
Checked by:	DEO

ISSUED FOR REVIEW:	12/19/2024
Revisions:	
▲	
▲	
▲	
▲	
▲	
▲	

- ### EXTERIOR FINISH NOTES
- PRE-FABRICATED CANOPY EDGE WITH PRE-WIRING INTEGRATED PERIMETER LED LIGHTING PROVIDED AND INSTALLED BY SIGN COMPANY. DIMENSIONS TO BE VERIFIED IN-FIELD AND INSTALLATION TO BE COORDINATED BY G.C.
 - SHAPE, SIZE AND DESIGN OF PANELS MAY VARY BETWEEN LOCATIONS AND MAY DEPEND ON LOCAL REQUIREMENTS.
 - WALL-WASH DOWNLIGHT ALONG BOTTOM PERIMETER OF PANELS.
 - INTERNALLY ILLUMINATED BUILDING SIGNAGE PROVIDED AND INSTALLED BY SIGN COMPANY. G.C. TO PROVIDE ELECTRICAL CONNECTION THROUGH FLEXIBLE CONDUITS. THE SIGN COMPANY SHALL OBTAIN SIGNAGE PERMIT AND SUBMIT SUPPORTING DOCUMENTATION AS PER LOCAL CITY REQUIREMENT AND CODE. G.C. SHALL VERIFY ACTUAL LOCATION AND SIZE OF SIGN WITH SIGN COMPANY'S APPROVED DRAWINGS AND COORDINATE LOCATIONS OF BLOCKING AND UTILITIES. ALL ELEMENTS PROVIDED BY SIGN COMPANY TO BE REVIEWED BY OWNER PRIOR TO PRODUCTION AND INSTALLATION.
 - ALL BOLLARDS TO HAVE WHITE BOLLARD COVER WITH WHITE REFLECTIVE STRIPING.
 - WINDOW REFER TO WINDOW SCHEDULE.
 - SERVICE WINDOW REFER TO WINDOW SCHEDULE.
 - STAINLESS STEEL WALLMOUNT SHELF.
 - CONCRETE CURB ALONG DRIVE-THRU LAKE.
 - RECEPTACLE, GFCI PROTECTED, WEATHER PROOF.
 - LOCATION OF HOSE BIB.
 - LOCATION OF EMERGENCY KEY BOX/KNIX BOX.
 - PANT TO MATCH COLOR OF BRICK.
 - SURFACE MOUNT EGRESS LIGHT, BLACK FINTURE.
 - SIGNAGE IS APPROVED ADMINISTRATIVELY THROUGH A SEPARATE APPLICATION BY SIGNAGE INSTALLER AND MUST MEET THE REQUIREMENTS OF IODD 15.02.100
 - ALL EXTERIOR GROUND MOUNTED AND ALL ROOFTOP BUILDING HVAC AND MECHANICAL EQUIPMENT, VENTS, PIPING, ROOF ACCESS LADDERS, AND UTILITY METERS MUST BE LOCATED OUT OF VIEW OR OTHERWISE SCREENED FROM PUBLIC VIEW. SCREENING MUST BE ACCOMPLISHED WITH LANDSCAPING, SCREEN WALLS, BUILDING ELEMENTS, OR A COMBINATION OF THESE METHODS.

CANOPY WITH FASCIA DRAIN AND SCUPPER OR APPROVED EQUAL BY MANUFACTURER. ALL DETAILS & INSTALLATION METHODS PER MANF. SPECS. BASIS OF DESIGN: MAPES SUPER LUMBER-CK-FLAT SCUPPER CANOPY

Hyper
Heart 2 America

HYPER ENERGY BAR
2250 W DARTMOUTH ST., OLATHE, KS 66061

© 2024 Heart of America Group | 514 E Locust St., Suite 100, Deo Moines, IA 50309 | 1501 River Drive, Deo Moines, IA 50265 | Phone: 319.707.9300

Project No.	...
Sheet Content:	EXTERIOR ELEVATIONS 3 & 4
Sheet No.	A2.2