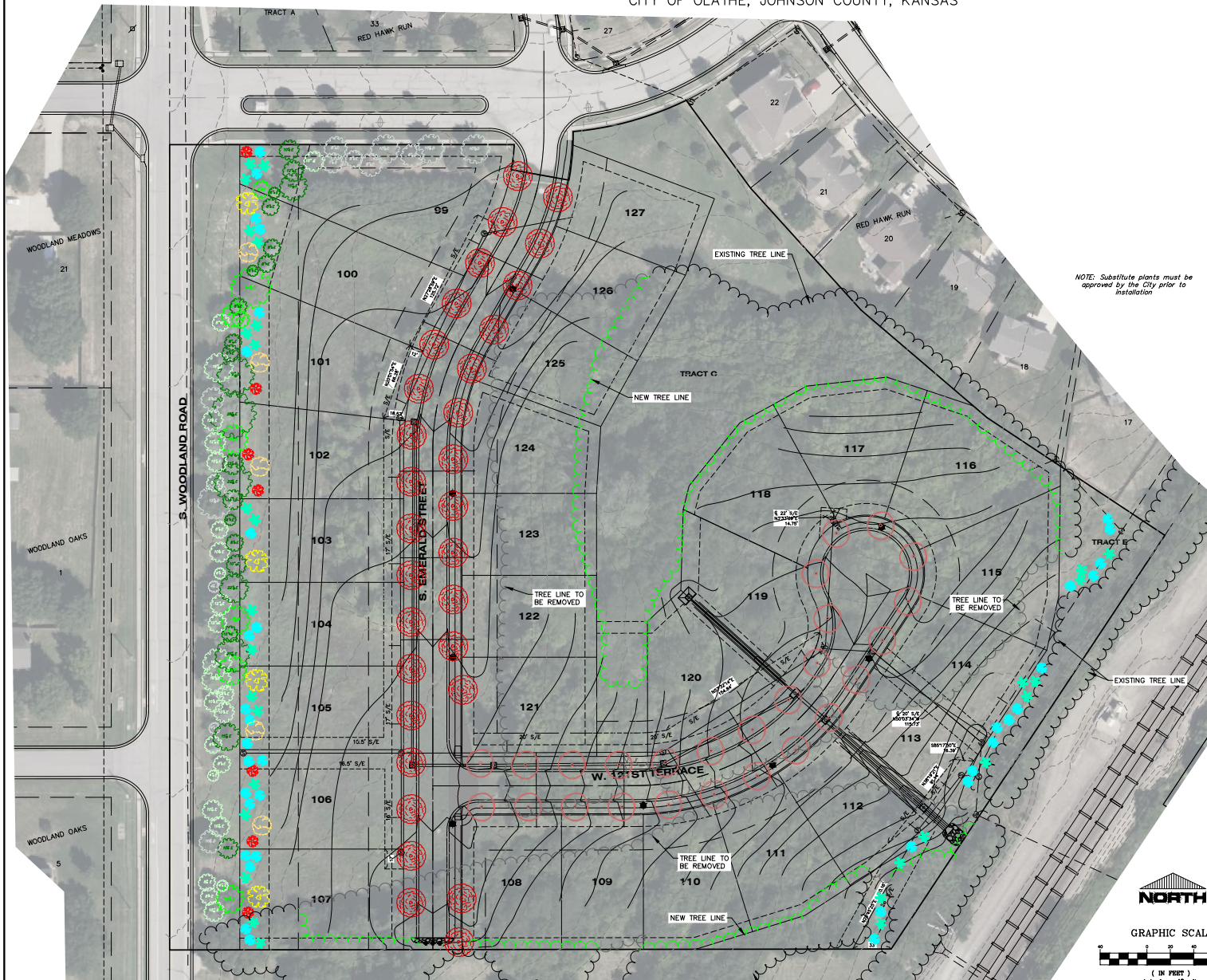


STREET TREE PLAN
 MASTER LANDSCAPE/SCREENING PLAN
RED HAWK RUN V
 CITY OF OLATHE, JOHNSON COUNTY, KANSAS



STREET TREE SCHEDULE				
SYMBOL	COMMON NAME	BOTANICAL NAME	QUANTITIES	PLANTING SIZE
	Norway Maple	<i>Acer platanoides</i>	32	Min. 2.5" Caliper
	Chinquapin Oak	<i>Quercus muhlenbergi</i>	26	Min. 2.5" Caliper

WOODLAND ROAD - ARTERIAL STREET - 689 FEET
 Shade Trees required (2 per 100 feet): 14 trees
 Evergreen Trees required (6 per 100 feet): 56 trees
 Ornamental Trees required (1 per 100 feet): 7 trees
 Total required: 77 trees

SYMBOL	QUANTITIES	COMMON NAME	BOTANICAL NAME	PLANTING SIZE
	5	American Linden	<i>Tilia americana</i>	Min. 2.5" Caliper
	4	Sun Valley Red Maple	<i>Acer rubrum 'Sun Valley'</i>	Min. 2.5" Caliper

PROPOSED SHADE: 9

SYMBOL	QUANTITIES	COMMON NAME	BOTANICAL NAME	PLANTING SIZE
	7	Red Bud	<i>Cercia canadensis</i>	2" Cal. & 8' ht.

PROPOSED ORNAMENTAL: 7

SYMBOL	QUANTITIES	COMMON NAME	BOTANICAL NAME	PLANTING SIZE
	19	Conoert Juniper	<i>Juniperus virginiana 'Conoertii'</i>	6" ht.
	22	White Pine	<i>Pinus strobus</i>	6" ht.

PROPOSED EVERGREENS: 41

EXISTING TREES ALONG WOODLAND ROAD
 (EXCLUDES TREES 12' WEST OF THE PROPOSED R/W LINE OR FARTHER)

SYMBOL	QUANTITIES	COMMON NAME	BOTANICAL NAME	PLANTING SIZE
	8			
	24			

TOTAL WOODLAND ROAD PLANTINGS: 89

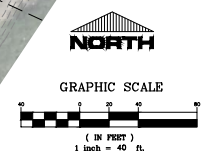
EXISTING TREES ALONG WOODLAND ROAD & LANGLEY ST
 NOT INCLUDED IN ARTERIAL PLANTING COUNT

SYMBOL	QUANTITIES	COMMON NAME	BOTANICAL NAME	PLANTING SIZE
	13			
	26			

RAILROAD R/W PLANTINGS

SYMBOL	QUANTITIES	COMMON NAME	BOTANICAL NAME	PLANTING SIZE
	11	Conoert Juniper	<i>Juniperus virginiana 'Conoertii'</i>	6" ht.
	15	White Pine	<i>Pinus strobus</i>	6" ht.

PROPOSED EVERGREENS: 26



RED HAWK RUN V
 CIVIL ENGINEERS
 LAND SURVEYORS - LAND PLANNERS
 122 N. WATER STREET
 OLATHE, KANSAS 66001
 PHONE: (913) 764-1076
 FAX: (913) 764-8635

14 W. PEGORIA
 PAOLA, KANSAS 66071
 PHONE: (913) 557-1076
 FAX: (913) 557-4904

AD PROJECT #36903 24-13-23