







NOT FOR CONSTRUCTION

REV DATE DESCRIPTION

REV	DATE	DESCRIPTION

PROJECT NUMBER

18890.00

DATE

3/30/2026

Preliminary Development Plan

DESIGNED: TAJ

DRAWN: TAJ

REVIEWED: Checkler

SHEET TITLE

EXTERIOR BUILDING ELEVATIONS

SHEET NUMBER

**A3.01**

© George Butler Associates, Inc. 2023

Engineering CD#4 1-20

Architecture CD#4 4-23

Land Surveying CD#4 1-18

**KEYNOTE INDICATOR**

10.01 KEYNOTE INDICATION SYMBOL FOR, BUT NOT LIMITED TO, CONSTRUCTION NOTES AND EQUIPMENT NOTES

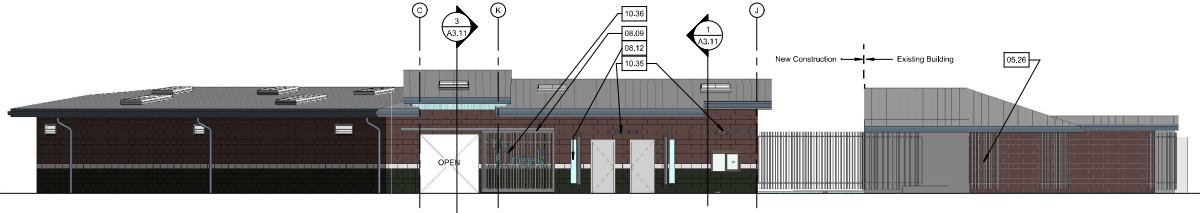
**NOTES**

1. KEYNOTE NUMBERS ARE BASED ON SPECIFICATION DIVISIONS. KEYNOTE NUMBERS ARE NOT MEANT TO ASSIGN OR EXCLUDE WORK FROM SPECIFIC TRADES OR DISCIPLINES. THEY ARE STRICTLY FOR KEYNOTE ORGANIZATION

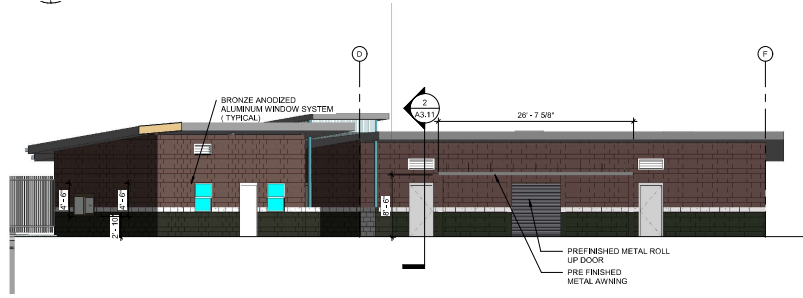
**Key Value**

**CONSTRUCTION NOTES**

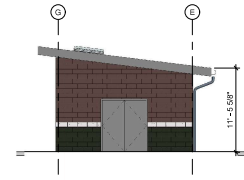
- 05.26 PREFINISHED METAL SCREEN SYSTEM.
- 08.02 THERMALLY BROKEN ALUMINUM FRAMED WINDOW WITH 1" EGL. - REF. WINDOW TYPES
- 08.02 WALL LOUVER - REF. MECH. DWGS. FOR ADDTL. INFO. - COLOR TO BE SELECTED BY ARCHITECT
- 08.09 METAL "BARN DOOR" PREFINISHED METAL WITH STAINED WOOD ACCENT SLATS
- 08.11 POLYCARBONATE CLEAR STORY SYSTEM FRAME TO BE BRONZED ALUMINUM
- 08.12 COLORED 8 X 4 GLASS BLOCK
- 10.35 ALUMINUM RAISED LETTERS
- 10.36 POWDER COATED ALUMINUM LETTERING. COLOR BY ARCHITECT. FONT AND SIZE TO MATCH OLATHE PARKS AND RECREATIONS GRAPHIC STANDARDS



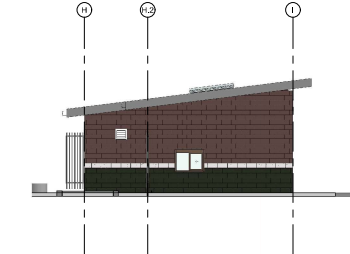
**NORTHWEST ELEVATION**  
 SCALE: 1/8" = 1'-0"



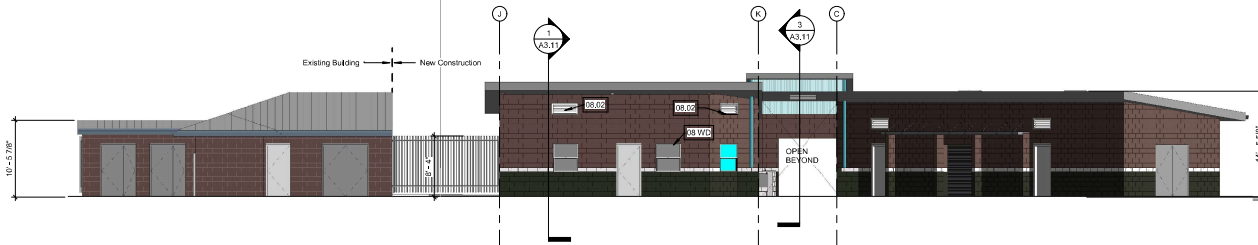
**SOUTH ELEVATION**  
 SCALE: 1/8" = 1'-0"



**EAST FACADE - BATHHOUSE**  
 SCALE: 1/8" = 1'-0"



**NORTH EAST - CONCESSIONS**  
 SCALE: 1/8" = 1'-0"

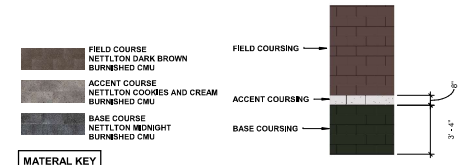


**SOUTH EAST - ELEVATIONS**  
 SCALE: 1/8" = 1'-0"



**NORTH ELEVATION**  
 SCALE: 1/8" = 1'-0"

MATERIAL TYPE	BURNISHED BRICK	GLASS BLOCK	NEW PAINTED SURT FACE	EXISTING PAINTED SURT FACE	FENESTRATION	DOORS	SCREENING	MARBLE PLANK	TOTAL AREA PER FACADE	
NORTH	713.00								713.00	
EAST	213.00								257.82	
SOUTH	710.02								806.86	
SOUTH EAST	283.76		71	180.6	26.6	24.4			686.36	
NORTH EAST	347.00				12				359.00	
NORTH WEST	543.00	8.5	336		112.3	45			1,064.80	
CORRIDOR NORTH EAST	284.44								288.84	
CORRIDOR SOUTH WEST	283.00				13.33				276.33	
S.W. MECHANICAL			331					52.25	283.25	
EXISTING NORTH EAST FACADE			47	272					319.00	
AREA OF MATERIAL	3,448.01	8.5	278	808.6	51.93	302	45	0	52.25	4,942.00
TOTAL PERCENT	70%	0%	6%	16%	2%	6%	1%	0%	1%	100%



P:\26100\26100\_01\26100\_01.dwg - Autodesk  
 1/20/2025 10:58:32 AM  
 C:\Users\AJT\OneDrive\Documents\26100\_01.dwg



NOT FOR CONSTRUCTION

REV	DATE	DESCRIPTION

PROJECT NUMBER

16850.00

DATE

3/30/2026

Preliminary Development Plan

DESIGNED: Designer

DRAWN: Author

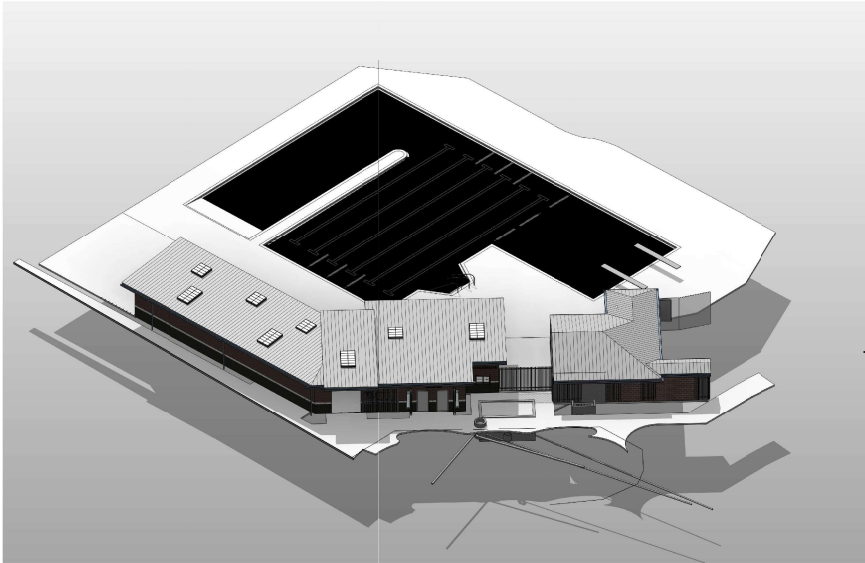
REVIEWED: Checker

SHEET TITLE

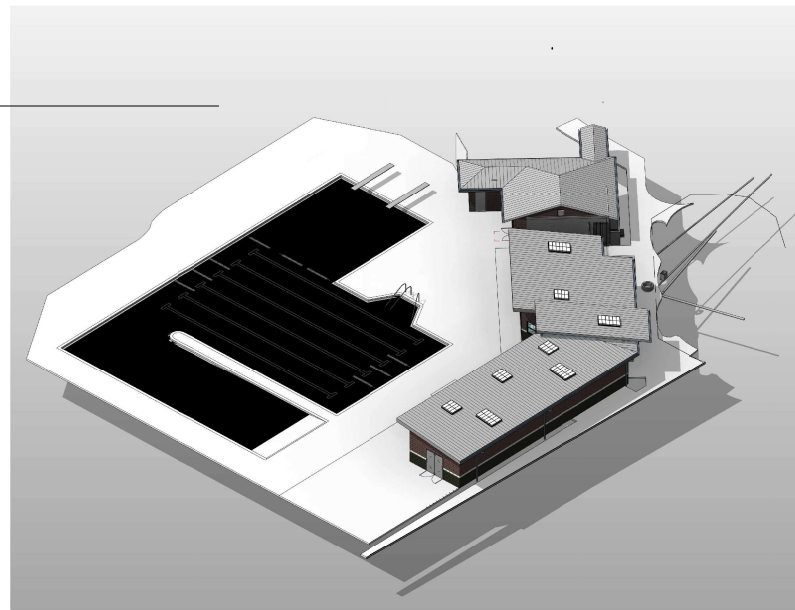
**BUILDING AXONOMETRIC**

SHEET NUMBER

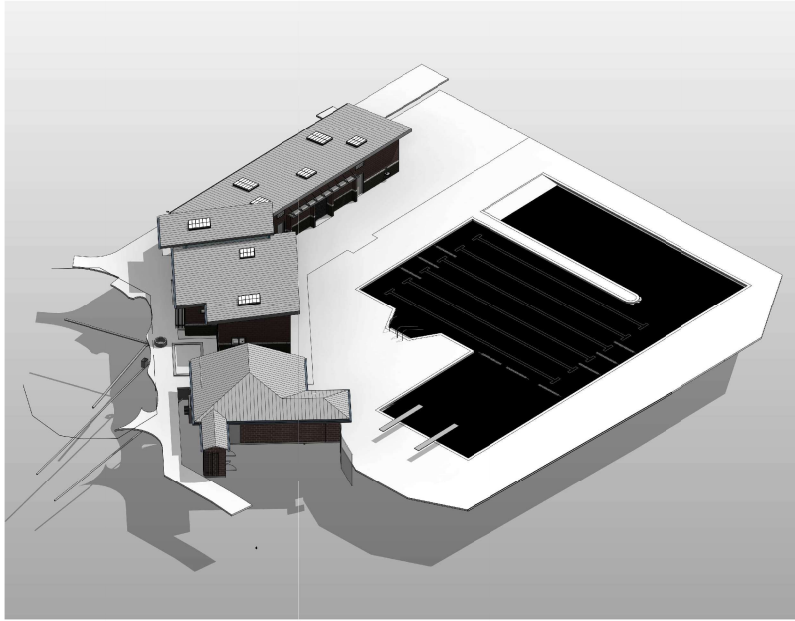
**A1.00**



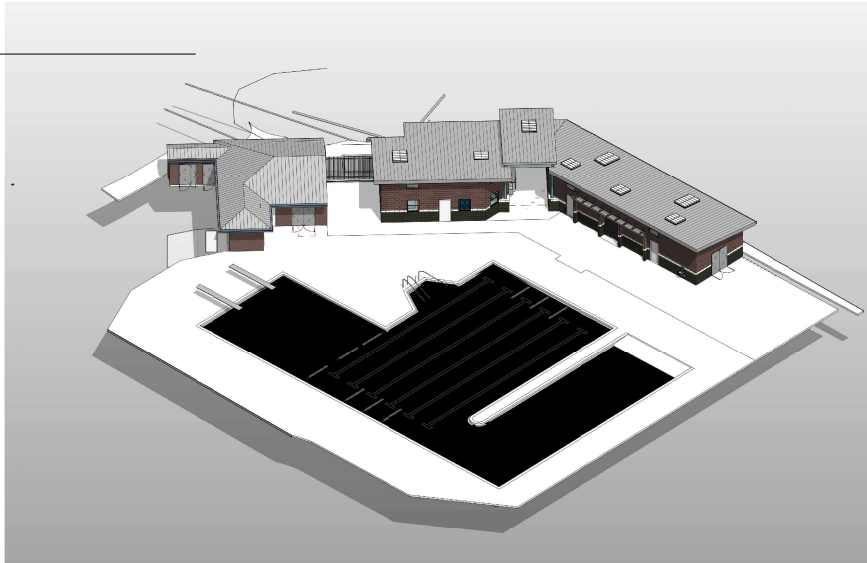
**NORTH WEST AXO**  
SCALE: 1/8"=1'-0"



**SOUTH WEST AXO**  
SCALE: 1/8"=1'-0"



**NORTH EAST AXO**  
SCALE:



**SOUTH EAST AXOS**  
SCALE:



9811 Bonner Blvd. Ste. 300  
Lenexa, KS 66219  
913.492.0400  
GBAks.com

**THE CREEK**  
CITY OF OLATHE - MILL CREEK POOL  
320 E Poplar St., Olathe, KS 66061

NOT FOR CONSTRUCTION

REV	DATE	DESCRIPTION

PROJECT NUMBER  
16850.00

DATE  
3/30/2026  
Preliminary Development Plan

DESIGNED: Designer  
DRAWN: Author  
REVIEWED: Checker

SHEET TITLE  
**BUILDING AXONOMETRIC**

SHEET NUMBER  
**A1.01**

© George Butler Associates, Inc. 2023  
Engineering CDMA 1-302  
Architecture CDMA 1-442  
Land Surveying CDMA 1-518

Plotter: 3/30/2026 10:54:52 PM - Autodesk  
 C:\Users\jlathe\OneDrive\Documents\16850.00\MillCreek\Pool\16850.00\AXONOMETRIC\AXO.dwg







