



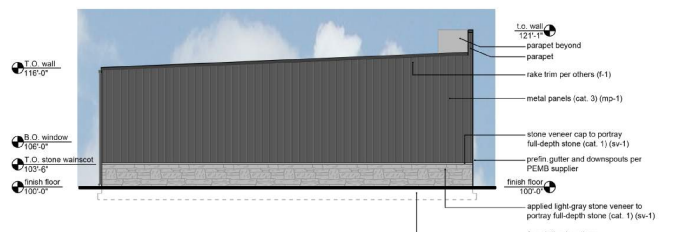
**1 Bldg A - West Elevation**  
scale: 1/8" = 1'-0"



**2 Bldg A - East Elevation**  
scale: 1/8" = 1'-0"

**Exterior Materials and Finishes:**

- stone/trim - cat. 1
- gl-1 1" insulated clear glass with low-E coating and argon fill  
"use SOLARBAN 60 as basis"
- stone veneer - cat. 1
- flashing, coping, gutters and downspouts - cat. 1
- metal wall panel - cat. 3
- metal roof panel - cat. 1
- overhead doors: oht-1 insulated and non-insulated color: Cobalt blue (prefinished)  
(see A1.2 construction notes)



**4 Bldg A - North Elevation**  
scale: 1/8" = 1'-0"



**3 Bldg A - South Elevation**  
scale: 1/8" = 1'-0"

**Primary Facade - Building A - West**

material	area	% area
clear glass - cat. 1	665 sf	15%
stone veneer - cat. 1	2,651 sf	59%
FW-120 metal panels - cat. 3	1,189 sf	24%
total wall area	4,504 sf	100%

Category 1 & 2 material (required min. 75%) actual 75%  
Category 3 & 4 material (required max. 25%) actual 25%  
Glazing (required min. 15%) actual 15%

**Primary Facade - Building A - South**

material	area	% area
clear glass - cat. 1	116 sf	15%
stone veneer - cat. 1	486 sf	60%
metal trim - cat. 4	37 sf	4%
FW-120 metal panels - cat. 3	156 sf	20%
total wall area	776 sf	100%

Category 1 & 2 material (required min. 75%) actual 75%  
Category 3 & 4 material (required max. 25%) actual 25%  
Glazing (required min. 15%) actual 15%

**Internal Facade - Building A - East**

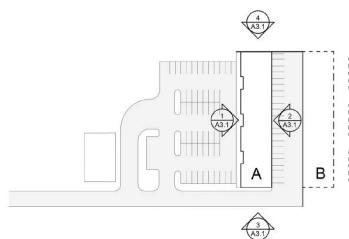
material	area	% area
metal trim - cat. 4	164 sf	10%
stone veneer - cat. 1	350 sf	20%
FW-120 metal panels - cat. 3	1,167 sf	70%
total wall area (omits 1,648 sq. ft. overhead door area)	1,681 sf	100%

5% / 85 sf stone veneer Required  
20% / 350 sf stone veneer Provided

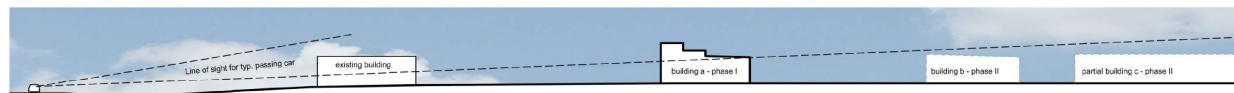
**Internal Facade - Building A - North**

material	area	% area
stone veneer - cat. 1	150 sf	20%
metal trim - cat. 4	37 sf	4%
FW-120 metal panels - cat. 3	599 sf	76%
total wall area:	776 sf	100%

5% / 85 sf stone veneer Required



**5 Key Plan**

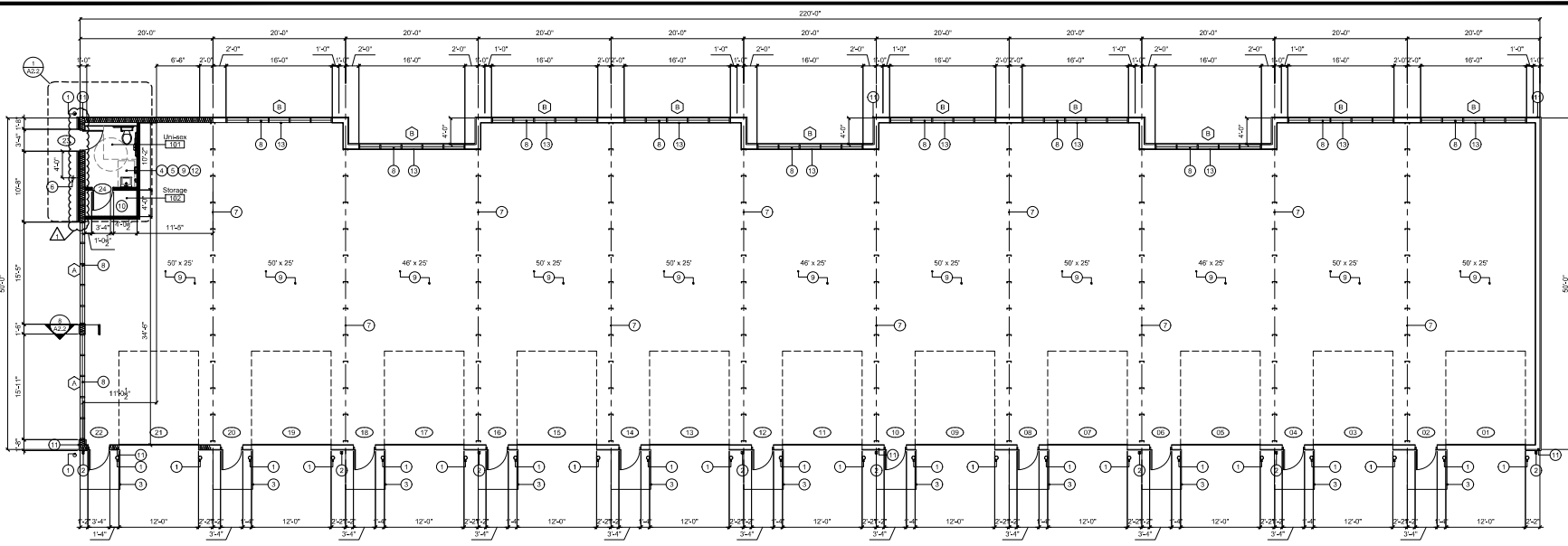


**5 Site Section**  
scale: 1/8" = 1'-0"

a new development for  
**Bluebox Garages**  
16129 S Lone Elm Rd. A-D  
Olathe, Kansas 66062

date 07.24.2024  
drawn by KKA  
checked by DAE  
revisions  
10.03.2024 01

sheet number  
**A3.1**  
drawing type Preliminary  
project number 21315



**1 | Bldg A - Floor Plan**  
scale: 1/8" = 1'-0"  
north

**Construction Notes:**

1. Furnish and install 4" high, 6" diameter pea gravel concrete filled gate pipe bollards at door details - to be painted yellow.
2. Pre-finished gutters and downspouts per PEMB supplier.
3. 5/8" wide by 5/16" long concrete stop per structural.
4. Provide ceiling sub-structure to hang ceiling from grid.
5. Furnish and install insulation over ceiling.
6. Building mounted water tap per MEP.
7. Unit separation wall, PEMB supplier to finalize placement and thickness.
8. Cleanout w/flow band per elevations.
9. Sealed concrete base per finish schedule.
10. Furnish and install shoring per owner requirements.
11. Furnish and install conduit for owner provided security camera system. Mounting height per owner and security system recommendations.
12. Cap rooms with 3/4" thick cover Slips, 6" metal joist at 16" o.c. at 10'-0" a.f.f. - wall construction to run past cap to 12'-0" a.f.f. to form a parapet to prevent storage.
13. Provide plywood backing to attach electrical panel as required.

**General Notes**

- Double keyed locks are not permitted on any required or marked exit.
- Building construction must fully comply with all requirements of ADA/ANSI accessibility guidelines.
- Exit doors shall be operable from the inside without the use of a key or any special knowledge or effort.
- All construction shall conform to the standards and regulations adopted by the city.
- The general contractor shall contact all utility companies prior to start of construction and verify depth of any utilities that may be encountered during construction.
- The general contractor shall be responsible for obtaining all required permits, paying all fees, and otherwise complying with all applicable regulations governing the project.
- Areas with drive-in doors require ventilation of at least 1.5 CFM per gross square foot of floor area with an equal amount of make-up air.
- Emergency lighting are subject to an on-site inspection.
- All new exterior utility service equipment shall be painted to match the building standard colors.

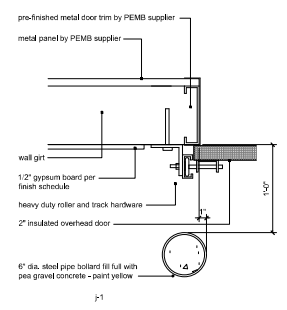
**Door Schedule**

door #	doors			frames		fire rating	hardware group	remarks
	type	mat.	size	type	material			
01	a	sl	pre-finished 12'-0" x 14'-0"	2"	-	-	-	-
02	b	fm	paint 3'-0" x 7'-0"	1 3/4"	1	fm	paint	-
03	a	sl	pre-finished 12'-0" x 14'-0"	2"	-	-	-	-
04	b	fm	paint 3'-0" x 7'-0"	1 3/4"	1	fm	paint	-
05	a	sl	pre-finished 12'-0" x 14'-0"	2"	-	-	-	-
06	b	fm	paint 3'-0" x 7'-0"	1 3/4"	1	fm	paint	-
07	a	sl	pre-finished 12'-0" x 14'-0"	2"	-	-	-	-
08	b	fm	paint 3'-0" x 7'-0"	1 3/4"	1	fm	paint	-
09	a	sl	pre-finished 12'-0" x 14'-0"	2"	-	-	-	-
10	b	fm	paint 3'-0" x 7'-0"	1 3/4"	1	fm	paint	-
11	a	sl	pre-finished 12'-0" x 14'-0"	2"	-	-	-	-
12	b	fm	paint 3'-0" x 7'-0"	1 3/4"	1	fm	paint	-
13	a	sl	pre-finished 12'-0" x 14'-0"	2"	-	-	-	-
14	b	fm	paint 3'-0" x 7'-0"	1 3/4"	1	fm	paint	-
15	a	sl	pre-finished 12'-0" x 14'-0"	2"	-	-	-	-
16	b	fm	paint 3'-0" x 7'-0"	1 3/4"	1	fm	paint	-
17	a	sl	pre-finished 12'-0" x 14'-0"	2"	-	-	-	-
18	b	fm	paint 3'-0" x 7'-0"	1 3/4"	1	fm	paint	-
19	a	sl	pre-finished 12'-0" x 14'-0"	2"	-	-	-	-
20	b	fm	paint 3'-0" x 7'-0"	1 3/4"	1	fm	paint	-
21	a	sl	pre-finished 12'-0" x 14'-0"	2"	-	-	-	insulated overhead door
22	b	fm	paint 3'-0" x 7'-0"	1 3/4"	1	fm	paint	insulated man door
23	b	fm	paint 3'-0" x 7'-0"	1 3/4"	1	gdk.	paint	insulated man door, provide keypad access
24	b	fm	paint 3'-0" x 7'-0"	1 3/4"	1	gdk.	paint	insulated man door, provide deadbolt lock

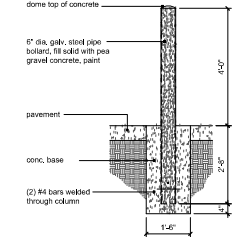
**Hardware Schedule**

set no.	item	description	finish	remarks
1	1-1/2" pair tw hinges	800 tw 4.5 x 4.5 mp - i ve	652	
	1 stainless lock	80003 dsh - sch	628	
	1 surface doser	4011 cusb - tm	630	
	1 set seals	700na - npp	gray	
	1 door sweep	101na - npp	aluminum	
	1 strip cap	16a - npp	aluminum	
	1 threshold	425 - npp	aluminum	
	1-1/2" pair hinges	800 tw 4.5 x 4.5 mp - i ve	652	
	1 privacy lock	80004 - dsh - sch	628	
	1 kick plate	8400 10" x 34" i tw - i ve	630	
2	1 surface doser	4011 cusb - tm	630	
	1 ext. stop	84011 cusb - i ve	630	
	1 handicap accessibility (ADA) sign	GC		provided and installed by G.C.
	1 "Tina-Sex" sign	GC		provided and installed by G.C.
	3 doors	40541 - i ve	gray	

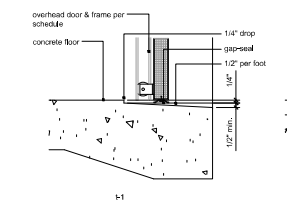
\* Keypad, physical key, or manual operation in restroom hardware to be discussed with owner.



**3 | Jamb Types**  
scale: 1" = 1'-0"



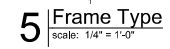
**2 | Bollard Detail**  
scale: 1/2" = 1'-0"



**6 | Threshold Types**  
scale: 1" = 1'-0"



**4 | Door Types**  
scale: 1/4" = 1'-0"

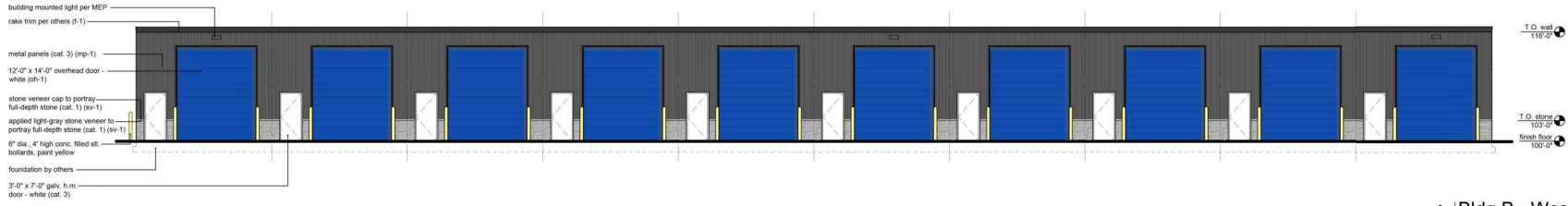


**5 | Frame Type**  
scale: 1/4" = 1'-0"

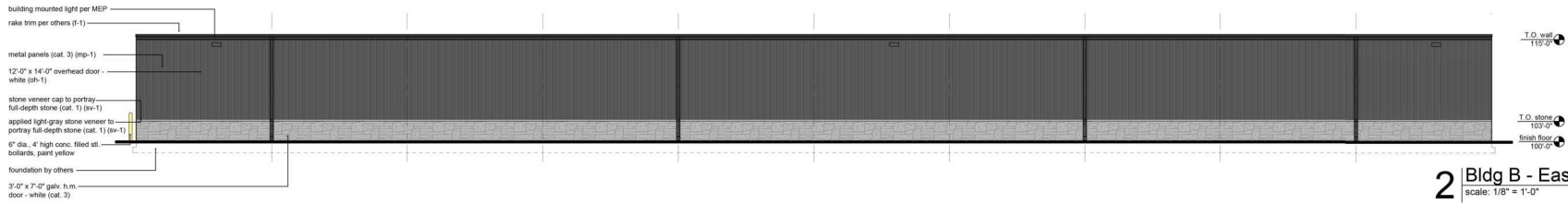
a new development for  
**Bluebox Garages**  
16129 S Lone Elm Rd. A-D  
Olathe, Kansas 66062

date: 07.24.2024  
drawn by: kka  
checked by: DAE  
revisions:  
10.03.2024

sheet number  
**A2.1**  
drawing type: Preliminary  
project number: 21315

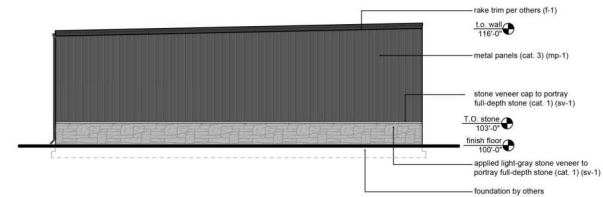


**1 Bldg B - West Elevation**  
scale: 1/8" = 1'-0"

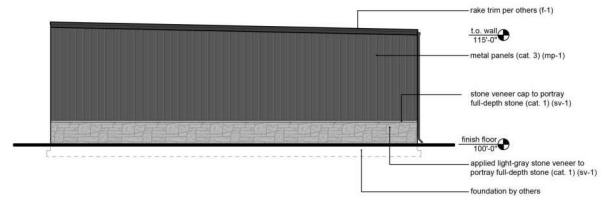


**2 Bldg B - East Elevation**  
scale: 1/8" = 1'-0"

- Exterior Materials and Finishes:**
- stonefront: cat. s-1 Anodized Aluminum frame, color: clear
  - glass: cat. 1 gl-1 1" insulated clear glass with low-E coating and argon fill use SOLARBAN 60 as basis
  - stone veneer: cat. 1 sv-1 Stone Veneer, color: Light Gray
  - flashing, coping, gutters and downspouts: cat. 1 f-1 prefinished 24 ga., color: Charcoal
  - metal wall panel: cat. 3 mp-1 FW-120 metal panels, color: Peppercorn Gray
  - metal roof panel: cat. 1 mr-1 prefinished standing seam metal, color: Charcoal
  - overhead doors: oph-1 insulated and non-insulated color: Cobalt blue (prefinished) (see A1.2 construction notes)



**4 Bldg B - North Elevation**  
scale: 1/8" = 1'-0"



**3 Bldg B - South Elevation**  
scale: 1/8" = 1'-0"

**Internal Facade - Building A - West**

material	area	% area
metal trim - cat. 4	132 sf	10 %
stone veneer - cat. 1	284 sf	20 %
PWC 120 metal panels - cat. 3	924 sf	70 %
<b>total wall area</b>	<b>1,340 sf</b>	<b>100 %</b>
(minus 1,680 sq. ft. overhead door area)		
5% / 85 of stone veneer Required		
20% / 260 of stone veneer Provided		

**Internal facade - Building B - south**

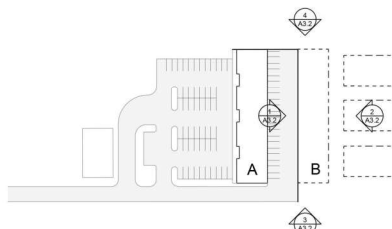
material	area	% area
metal trim - cat. 4	62 sf	10 %
stone veneer - cat. 1	124 sf	20 %
PWC 120 metal panels - cat. 3	414 sf	70 %
<b>total wall area</b>	<b>600 sf</b>	<b>100 %</b>
5% / 42 of stone veneer Required		
20% / 165 of stone veneer Provided		

**Internal facade - Building B - north**

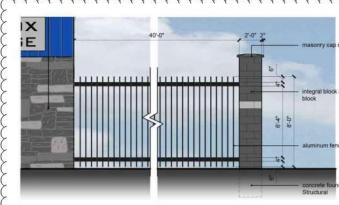
material	area	% area
metal trim - cat. 4	62 sf	10 %
stone veneer - cat. 1	124 sf	20 %
PWC 120 metal panels - cat. 3	414 sf	70 %
<b>total wall area</b>	<b>600 sf</b>	<b>100 %</b>
5% / 42 of stone veneer Required		
20% / 165 of stone veneer Provided		

**Internal Facade - Building A - East**

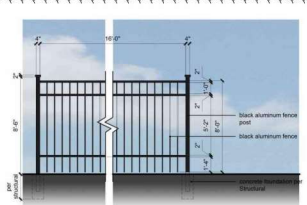
material	area	% area
metal trim - cat. 4	320 sf	4 %
stone veneer - cat. 1	600 sf	20 %
PWC 120 metal panels - cat. 3	2,080 sf	76 %
<b>total wall area</b>	<b>3,000 sf</b>	<b>100 %</b>
5% / 85 of stone veneer Required		
20% / 350 of stone veneer Provided		



**5 Key Plan**



**6 gate detail**  
scale: 3/16" = 1'-0"

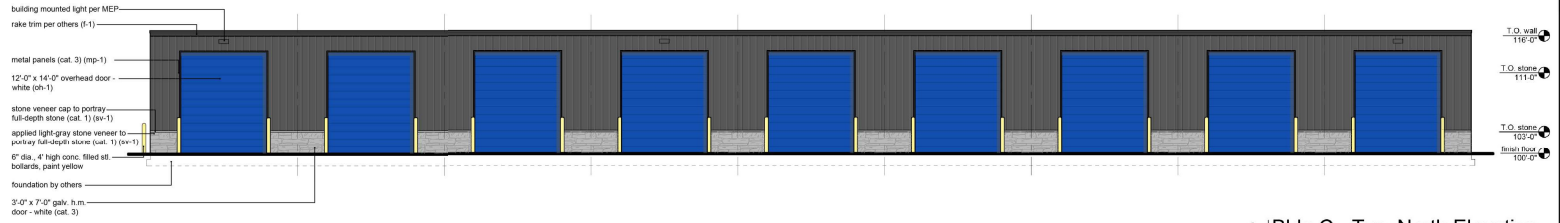


**5 fence detail**  
scale: 3/16" = 1'-0"

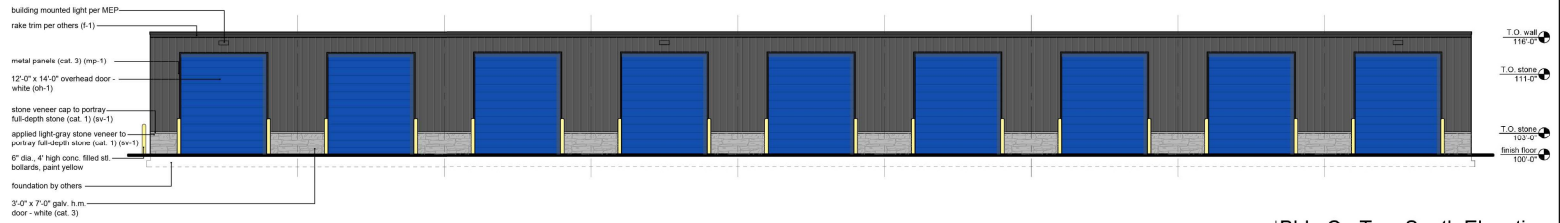
a new development for  
**Bluebox Garages**  
16129 S Lone Elm Rd., A-D  
Olathe, Kansas 66062

date: 07.24.2024  
drawn by: kka  
checked by: DAE  
revisions:  
10.03.2024 01

sheet number  
**A3.2**  
drawing type: Preliminary  
project number: 21315



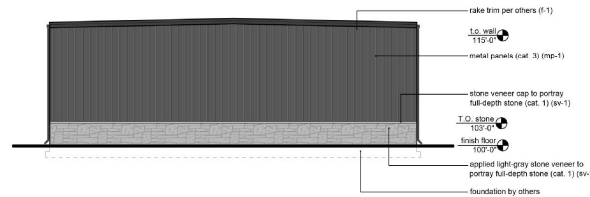
**1** Bldg C - Typ. North Elevation  
scale: 1/8" = 1'-0"



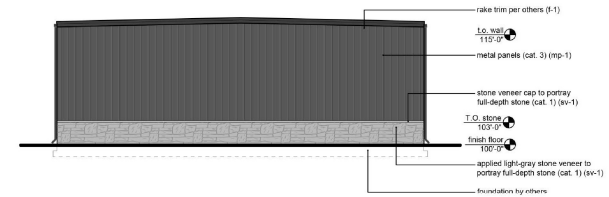
**2** Bldg C - Typ. South Elevation  
scale: 1/8" = 1'-0"

**Exterior Materials and Finishes:**

- stonefront: cat. s-1 Anodized Aluminum frame, color: clear
- glass: cat. 1 gp-1 1" insulated clear glass with low-E coating and argon fill use SOLARBAN 60 as basis
- stone veneer: cat. 1 sv-1 Stone Veneer, color: Light Gray
- flashing, coping, gutters and downspouts: cat. 1 f-1 prefinished 24 ga., color: Charcoal
- metal wall panel: cat. 3 mp-1 FW-120 metal panels, color: Peppercorn Gray
- metal roof panel: cat. 1 mr-1 prefinished standing seam metal, color: Charcoal
- overhead doors: oh-1 insulated and non-insulated color: Cobalt blue (prefinished) (see A1.2 construction notes)



**4** Bldg C - Typ. East Elevation  
scale: 1/8" = 1'-0"



**3** Bldg C - Typ. West Elevation  
scale: 1/8" = 1'-0"

**Internal Facade - Building C - North**

material	area	% area
metal trim - cat. 4	164 sf	10 %
stone veneer - cat. 1	264 sf	16 %
FW-120 metal panels - cat. 3	1,386 sf	70 %
total wall area (minus 1,782sq. ft. overhead door area)	1,738 sf	100 %

5% / 85 of stone veneer Required  
15% / 264 of stone veneer Provided

**Internal facade - Building C - East**

material	area	% area
metal trim - cat. 4	37 sf	4 %
stone veneer - cat. 1	165 sf	16 %
FW-120 metal panels - cat. 3	663 sf	77 %
total wall area:	865 sf	100 %

5% / 42 of stone veneer Required  
20% / 165 of stone veneer Provided

**Internal facade - Building C - West**

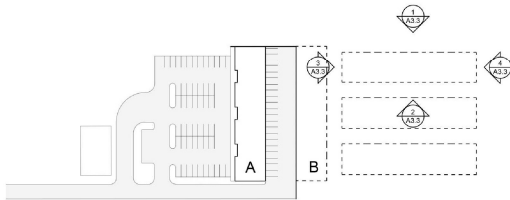
material	area	% area
metal trim - cat. 4	37 sf	4 %
stone veneer - cat. 1	165 sf	16 %
FW-120 metal panels - cat. 3	663 sf	77 %
total wall area:	865 sf	100 %

5% / 42 of stone veneer Required  
20% / 165 of stone veneer Provided

**Internal Facade - Building C - South**

material	area	% area
metal trim - cat. 4	164 sf	10 %
stone veneer - cat. 1	264 sf	16 %
FW-120 metal panels - cat. 3	1,386 sf	70 %
total wall area (minus 1,782sq. ft. overhead door area)	1,738 sf	100 %

5% / 85 of stone veneer Required  
15% / 264 of stone veneer Provided



**5** Key Plan

a new development for  
**Bluebox Garages**  
16129 S Lone Elm Rd. A-D  
Olathe, Kansas 66062

date: 07.24.2024  
drawn by: KKA  
checked by: DAE  
revisions:  
10.03.2024 01

sheet number  
**A3.3**  
drawing type: Preliminary  
project number: 21315