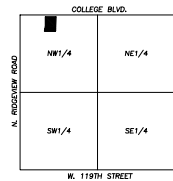


Know what's below.
Call before you dig.

UTILITY NOTES:
VISUAL INDICATIONS OF UTILITIES ARE AS SHOWN.
UNDERGROUND LOCATIONS SHOWN, AS FURNISHED BY THEIR
LESSORS, ARE APPROXIMATE AND SHOULD BE VERIFIED IN
THE FIELD AT THE TIME OF CONSTRUCTION. FOR ACTUAL
FIELD LOCATIONS OF UNDERGROUND UTILITIES CALL 811.



SCALE: 1"=30'
0' 30' 60'

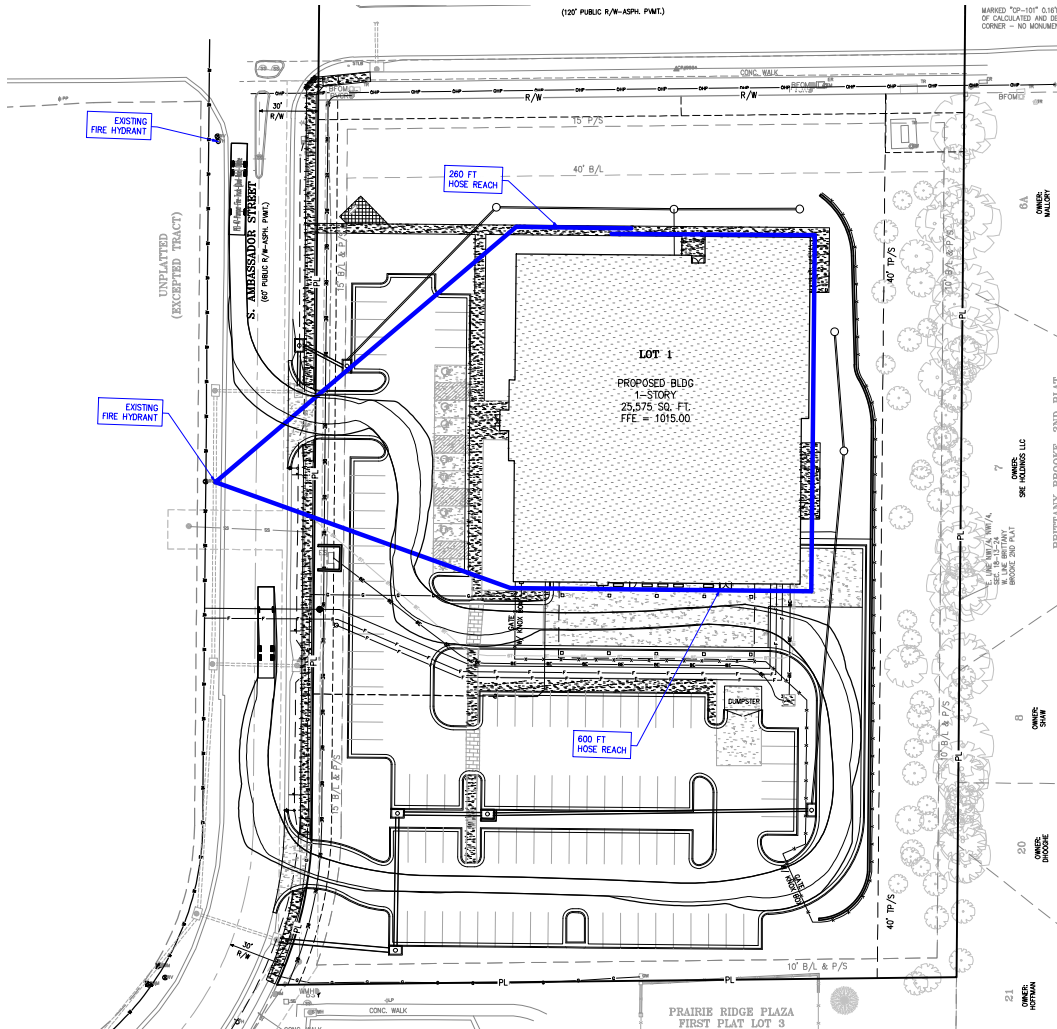
PHELPS ENGINEERING, INC.
1270 N. WINCHESTER
OLATHE, KANSAS 66061
(913) 393-1155
WWW.PHELPS-ENGINEERING.COM



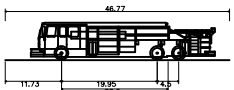
SITE PLAN
MIDLAND CARE - JOHNSON COUNTY PACE CENTER
COLLEGE BLVD AND AMBASSADOR
OLATHE, KANSAS

PROJECT NO.	DATE	BY	APP.	REVISIONS	COMMENTS
230812	01/02/24	JM	JM	1	ISSUED FOR CITY COMMENTS
				2	2-20-24 REVISION PER CITY COMMENTS
APPROVED BY: [Signature]					
APPROVED BY: [Signature]					
APPROVED BY: [Signature]					

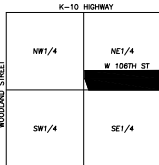
SHEET
C1



STIPULATION	MET
1. Fire hydrants that supply water must meet the fire flow in accordance with IFC Appendix B.105, or the sprinkler system demand, whichever is greater; otherwise the water supply for the fire hydrant is required to be tested to existing mains.	Provided
2. Dead-end water mains with fire hydrants are not permitted unless water supply calculations can be provided that demonstrates an adequate water supply is provided; otherwise the water supply for hydrants is required to be looped to existing mains.	N/A
3. Structures without Fire Sprinklers: fire hydrants are required within 400 feet of all structures without an automatic sprinkler system (travel distance).	N/A
4. Structures with Fire Sprinklers: all portions of the buildings shall be within 600 feet of hose travel distance from a hydrant(s) for buildings with an automatic sprinkler system.	Provided
5A. Fire department connection (FDC) is required within 100 feet of a hydrant for each building with an automatic sprinkler. The FDC is required to be accessible from all fire apparatus access road.	Provided
5B. Clear space around and immediate access to the fire department connections, not less than 3-feet in width, shall be provided without obstruction by fences, bushes, trees, walls, or any other fixed or moveable object.	Provided
5C. Providing striping on the pavement in front of the Fire Department Connection (FDC) the depth and width of vehicle stall (8 feet by 20 feet). Provide a _____ parking stall.	Provided
6A. Roads are required to be at least 20 feet wide, provide a 20-foot turning radius for fire apparatus to make turns, and be an all-weather surface that can support at least 75,000 pounds.	Provided
6B. Please provide a turning template that shows fire department apparatus access is possible or provide a revised turning radius for entry points less than a 78-foot turning radius.	Provided
6C. Where fire hydrants or fire department connections are provided adjacent to a road, at least that area of the road (the length of the apparatus) is required to be _____ ft wide.	Provided
6D. The fire apparatus access road shall comply with the requirements of this section and shall extend to within 150 feet of all portions of the facility and all portions of the exterior walls of the first story of the building is not protected by an automatic fire sprinkler system.	N/A
6E. The fire apparatus access road shall comply with the requirement of this section and shall extend to within 300 feet of all portions of the facility and all portions of the exterior walls of the first story of the building that is protected by	Provided



PEI-47-Pumper-Fire-Truck-(Dual-Axle)-Olathe	
Overall Length	46.770ft
Overall Width	8.167ft
Overall Body Height	7.745ft
Min Body Ground Clearance	0.656ft
Track Width	8.167ft
Lock-to-lock time	5.00s
Max Wheel Angle	45.00°

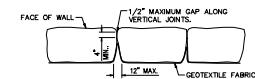


VICINITY MAP
SEC. 12-13-



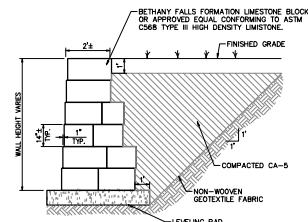
SCALE: 1"=30'

UTILITY NOTES:
VISUAL INDICATIONS OF UTILITIES ARE AS SHOWN.
UNDERGROUND LOCATIONS SHOWN, AS FURNISHED BY THEIR
LESSORS, ARE APPROXIMATE AND SHOULD BE VERIFIED IN
THE FIELD AT THE TIME OF CONSTRUCTION. FOR ACTUAL
FIELD LOCATIONS OF UNDERGROUND UTILITIES CALL 811.



LIMESTONE BLOCK JOINTING DETAIL

FILL VOIDS BETWEEN BLOCKS BELOW THE TOP COURSE WITH CA-5. GAPS BETWEEN BLOCKS ON THE TOP COURSE SHALL BE FILLED WITH COMPACTED TOPSOIL AND SEEDS.



LIMESTONE BLOCK WALL DETAIL

DETAIL IS CONCEPTUAL. WALLS OVER 4' IN HEIGHT SHALL BE DESIGNED BY A STRUCTURAL ENGINEER.

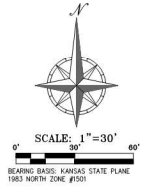
LEGEND

—— PL ——	PROPERTY LINE
— LL —	LOT LINE
— R/W —	RIGHT-OF-WAY
====	2' CURB & GUTTER
--- 920 ---	EXISTING CONTOURS
--- 918 ---	
--- 920 ---	PROPOSED CONTOURS

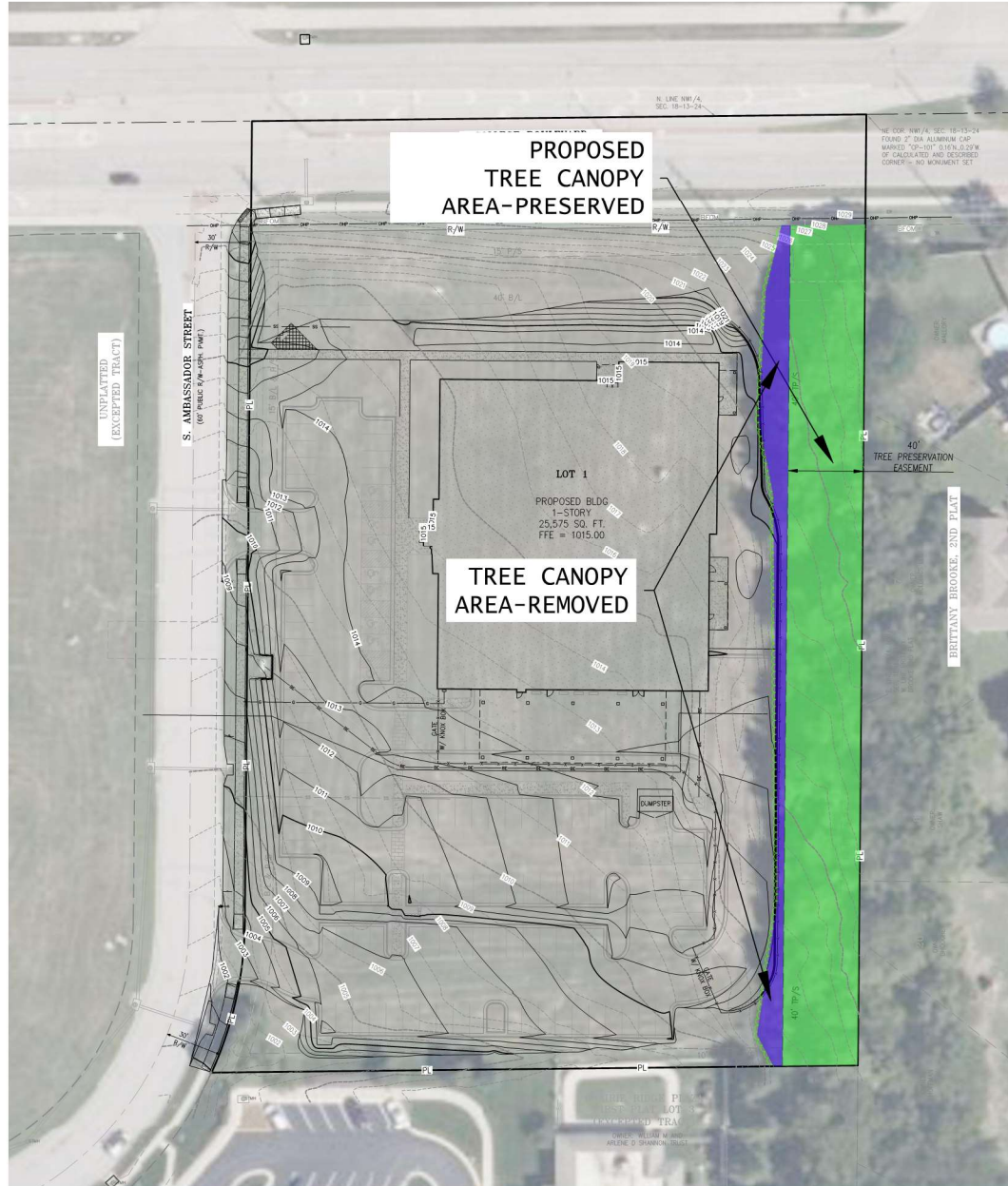
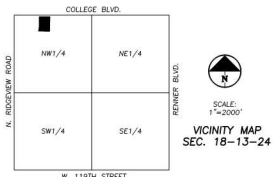


SCALE: 1"=30'

\\phelps-engineering\projects\130813\Tree Canopy & DIB\Map Layout1_1 Feb 20, 2024 - 4:24am JAKETTE IPW1



TREE PRESERVATION SUMMARY	
AREA OF TREE CANOPY	0.51 ACRES
30% OF TREE CANOPY AREA	0.15 ACRES
AREA OF TREES PRESERVED	0.42 ACRES
PERCENT OF TREES PRESERVED	82.35%



ENGINEER/APPLICANT:
PHILIPS ENGINEERING, INC.
1270 N. WINCHESTER
OLATHE, KS 66061
(913) 363-1155
(913) 363-1166 FAX

PHILIPS ENGINEERING, INC.
1270 N. Winchester
Olathe, Kansas 66061
(913) 363-1155
www.philips-engineering.com



TREE CANOPY EXHIBIT
MIDLAND CARE - JOHNSON COUNTY PACE CENTER
COLLEGE BLVD AND AMBASSADOR
OLATHE, KANSAS

PROJECT NO.	NO.	DATE	REVISIONS	BY	APP.
130813	2	2-20-24	REVISED PER CITY COMMENTS	AND	DEL
DATE OF APPROVAL	DATE OF APPROVAL	DATE OF APPROVAL	DATE OF APPROVAL	DATE OF APPROVAL	DATE OF APPROVAL
DATE OF APPROVAL	DATE OF APPROVAL	DATE OF APPROVAL	DATE OF APPROVAL	DATE OF APPROVAL	DATE OF APPROVAL
DATE OF APPROVAL	DATE OF APPROVAL	DATE OF APPROVAL	DATE OF APPROVAL	DATE OF APPROVAL	DATE OF APPROVAL
DATE OF APPROVAL	DATE OF APPROVAL	DATE OF APPROVAL	DATE OF APPROVAL	DATE OF APPROVAL	DATE OF APPROVAL
DATE OF APPROVAL	DATE OF APPROVAL	DATE OF APPROVAL	DATE OF APPROVAL	DATE OF APPROVAL	DATE OF APPROVAL
DATE OF APPROVAL	DATE OF APPROVAL	DATE OF APPROVAL	DATE OF APPROVAL	DATE OF APPROVAL	DATE OF APPROVAL
DATE OF APPROVAL	DATE OF APPROVAL	DATE OF APPROVAL	DATE OF APPROVAL	DATE OF APPROVAL	DATE OF APPROVAL
DATE OF APPROVAL	DATE OF APPROVAL	DATE OF APPROVAL	DATE OF APPROVAL	DATE OF APPROVAL	DATE OF APPROVAL

SHEET
C4

MONTAGE COMMERCIAL[®]

Commercial Ornamental Steel Fence

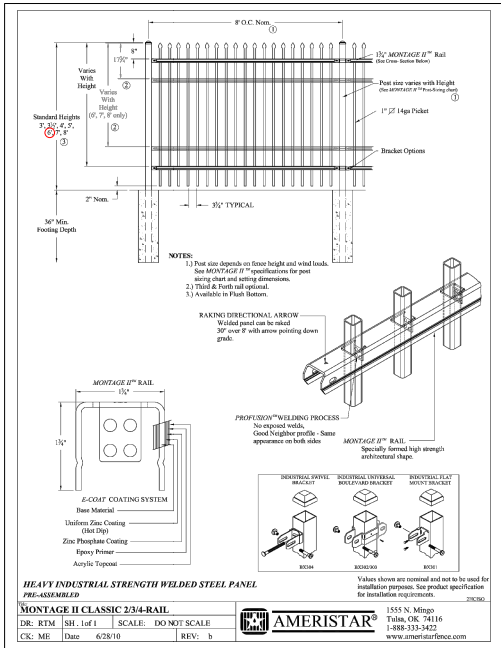


Montage Commercial steel fences have redefined the commercial fence industry with strength that matches the level of security demanded. In the past commercial fencing was defined as a chain link fence with three strands of barbed wire, today Montage Commercial ornamental fences are the standard for security fencing.

PRIMARY APPLICATIONS

- Commercial Developments
- Municipal Facilities
- Self Storage
- Parking Facilities
- Parks & Recreation
- Universities
- K-12 Schools

AMERISTARPERIMETER.COM | 800-321-8724



PHILADELPHIA ENGINEERING INC.
1000 N. Washington
Chula Vista, CA 92010
619-591-1111
www.philadelphiaeng.com



SITE PLAN
MIDLAND CARE - JOHNSON COUNTY PACE CENTER
COLLEGE BLVD AND AMBASSADOR
OLATHE, KANSAS

PROJECT NO.	23082	No.	Date	Revisions	By	App.
DATE OF APPROVAL	2-20-24	1	2-5-24	REVISED PER CITY COMMENTS	MO	DEU
DATE OF APPROVAL	2-20-24	2	2-20-24	REVISED PER CITY COMMENTS	MO	DEU
DATE OF APPROVAL	2-20-24					
DATE OF APPROVAL	2-20-24					
DATE OF APPROVAL	2-20-24					
DATE OF APPROVAL	2-20-24					
DATE OF APPROVAL	2-20-24					
DATE OF APPROVAL	2-20-24					
DATE OF APPROVAL	2-20-24					
DATE OF APPROVAL	2-20-24					
DATE OF APPROVAL	2-20-24					
DATE OF APPROVAL	2-20-24					
DATE OF APPROVAL	2-20-24					
DATE OF APPROVAL	2-20-24					
DATE OF APPROVAL	2-20-24					
DATE OF APPROVAL	2-20-24					
DATE OF APPROVAL	2-20-24					
DATE OF APPROVAL	2-20-24					
DATE OF APPROVAL	2-20-24					
DATE OF APPROVAL	2-20-24					
DATE OF APPROVAL	2-20-24					
DATE OF APPROVAL	2-20-24					
DATE OF APPROVAL	2-20-24					
DATE OF APPROVAL	2-20-24					
DATE OF APPROVAL	2-20-24					
DATE OF APPROVAL	2-20-24					
DATE OF APPROVAL	2-20-24					
DATE OF APPROVAL	2-20-24					
DATE OF APPROVAL	2-20-24					
DATE OF APPROVAL	2-20-24					
DATE OF APPROVAL	2-20-24					
DATE OF APPROVAL	2-20-24					
DATE OF APPROVAL	2-20-24					
DATE OF APPROVAL	2-20-24					
DATE OF APPROVAL	2-20-24					
DATE OF APPROVAL	2-20-24					
DATE OF APPROVAL	2-20-24					
DATE OF APPROVAL	2-20-24					
DATE OF APPROVAL	2-20-24					
DATE OF APPROVAL	2-20-24					
DATE OF APPROVAL	2-20-24					
DATE OF APPROVAL	2-20-24					
DATE OF APPROVAL	2-20-24					
DATE OF APPROVAL	2-20-24					
DATE OF APPROVAL	2-20-24					
DATE OF APPROVAL	2-20-24					
DATE OF APPROVAL	2-20-24					
DATE OF APPROVAL	2-20-24					
DATE OF APPROVAL	2-20-24					
DATE OF APPROVAL	2-20-24					
DATE OF APPROVAL	2-20-24					
DATE OF APPROVAL	2-20-24					
DATE OF APPROVAL	2-20-24					
DATE OF APPROVAL	2-20-24					
DATE OF APPROVAL	2-20-24					
DATE OF APPROVAL	2-20-24					
DATE OF APPROVAL	2-20-24					
DATE OF APPROVAL	2-20-24					
DATE OF APPROVAL	2-20-24					
DATE OF APPROVAL	2-20-24					
DATE OF APPROVAL	2-20-24					
DATE OF APPROVAL	2-20-24					
DATE OF APPROVAL	2-20-24					
DATE OF APPROVAL	2-20-24					
DATE OF APPROVAL	2-20-24					
DATE OF APPROVAL	2-20-24					
DATE OF APPROVAL	2-20-24					
DATE OF APPROVAL	2-20-24					
DATE OF APPROVAL	2-20-24					
DATE OF APPROVAL	2-20-24					
DATE OF APPROVAL	2-20-24					
DATE OF APPROVAL	2-20-24					
DATE OF APPROVAL	2-20-24					
DATE OF APPROVAL	2-20-24					
DATE OF APPROVAL	2-20-24					
DATE OF APPROVAL	2-20-24					
DATE OF APPROVAL	2-20-24					
DATE OF APPROVAL	2-20-24					
DATE OF APPROVAL	2-20-24					
DATE OF APPROVAL	2-20-24					
DATE OF APPROVAL	2-20-24					
DATE OF APPROVAL	2-20-24					
DATE OF APPROVAL	2-20-24					
DATE OF APPROVAL	2-20-24					
DATE OF APPROVAL	2-20-24					
DATE OF APPROVAL	2-20-24					
DATE OF APPROVAL	2-20-24					
DATE OF APPROVAL	2-20-24					
DATE OF APPROVAL	2-20-24					
DATE OF APPROVAL	2-20-24					
DATE OF APPROVAL	2-20-24					
DATE OF APPROVAL	2-20-24					
DATE OF APPROVAL	2-20-24					
DATE OF APPROVAL	2-20-24					
DATE OF APPROVAL	2-20-24					
DATE OF APPROVAL	2-20-24					
DATE OF APPROVAL	2-20-24					
DATE OF APPROVAL	2-20-24					
DATE OF APPROVAL	2-20-24					
DATE OF APPROVAL	2-20-24					
DATE OF APPROVAL	2-20-24					
DATE OF APPROVAL	2-20-24					
DATE OF APPROVAL	2-20-24					
DATE OF APPROVAL	2-20-24					
DATE OF APPROVAL	2-20-24					
DATE OF APPROVAL	2-20-24					
DATE OF APPROVAL	2-20-24					
DATE OF APPROVAL	2-20-24					
DATE OF APPROVAL	2-20-24					
DATE OF APPROVAL	2-20-24					
DATE OF APPROVAL	2-20-24					
DATE OF APPROVAL	2-20-24					
DATE OF APPROVAL	2-20-24					
DATE OF APPROVAL	2-20-24					
DATE OF APPROVAL	2-20-24					
DATE OF APPROVAL	2-20-24					
DATE OF APPROVAL	2-20-24					
DATE OF APPROVAL	2-20-24					
DATE OF APPROVAL	2-20-24					
DATE OF APPROVAL	2-20-24					
DATE OF APPROVAL	2-20-24					
DATE OF APPROVAL	2-20-24					
DATE OF APPROVAL	2-20-24					
DATE OF APPROVAL	2-20-24					
DATE OF APPROVAL	2-20-24					
DATE OF APPROVAL	2-20-24					
DATE OF APPROVAL	2-20-24					
DATE OF APPROVAL	2-20-24					
DATE OF APPROVAL	2-20-24					
DATE OF APPROVAL	2-20-24					
DATE OF APPROVAL	2-20-24					
DATE OF APPROVAL	2-20-24					
DATE OF APPROVAL	2-20-24					
DATE OF APPROVAL	2-20-24					
DATE OF APPROVAL	2-20-24					

SHEET
C5