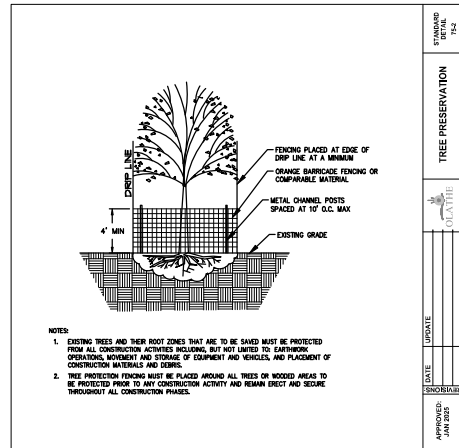


EXISTING TREES AND THEIR ROOT ZONES ABUTTING PROPERTY MUST BE PROTECTED FROM ALL CONSTRUCTION ACTIVITIES INCLUDING, BUT NOT LIMITED TO: EARTHWORK OPERATIONS, MOVEMENT AND STORAGE OF EQUIPMENT AND VEHICLES, AND PLACEMENT OF CONSTRUCTION MATERIALS AND DEBRIS.

TREE PRESERVATION LEGEND	
SYMBOL	DESCRIPTION
	EXISTING TREE AREA PRESERVED (2.94 Acres, 28.4%)
	EXISTING TREE AREA REMOVED (7.43 Acres, 71.6%)
	TREE PROTECTION FENCING

Tree Protection

1. Tree protection zones shall be delineated on-site with tree protection fencing prior to any land disturbing activities.
2. Tree protection fencing shall be composed of orange, contractor-grade material that is at least four (4) feet in height and supported by metal channel posts spaced at a maximum of ten (10) feet on center.
3. Tree protection fence shall be securely fastened to the top, middle, and bottom of each post.
4. Tree protection fence shall be inspected each workday and maintained in effective operating condition. Perform necessary maintenance to ensure the all delineated woodlands are delineated and protected throughout all construction phases.
5. All tree protection fencing shall be properly removed from site after all phases of construction are completed.



DATE	DESCRIPTION	BY	DATE
JAN 2024	TREE PRESERVATION	PH	1/14



Know what's below.
Call before you dig.

UTILITY NOTES:
VISUAL INDICATIONS OF UTILITIES ARE AS SHOWN. UNDERGROUND LOCATIONS SHOWN, AS FURNISHED BY THEIR LESSORS, ARE APPROXIMATE AND SHOULD BE VERIFIED IN THE FIELD AT THE TIME OF CONSTRUCTION. FOR ACTUAL FIELD LOCATIONS OF UNDERGROUND UTILITIES CALL 811.

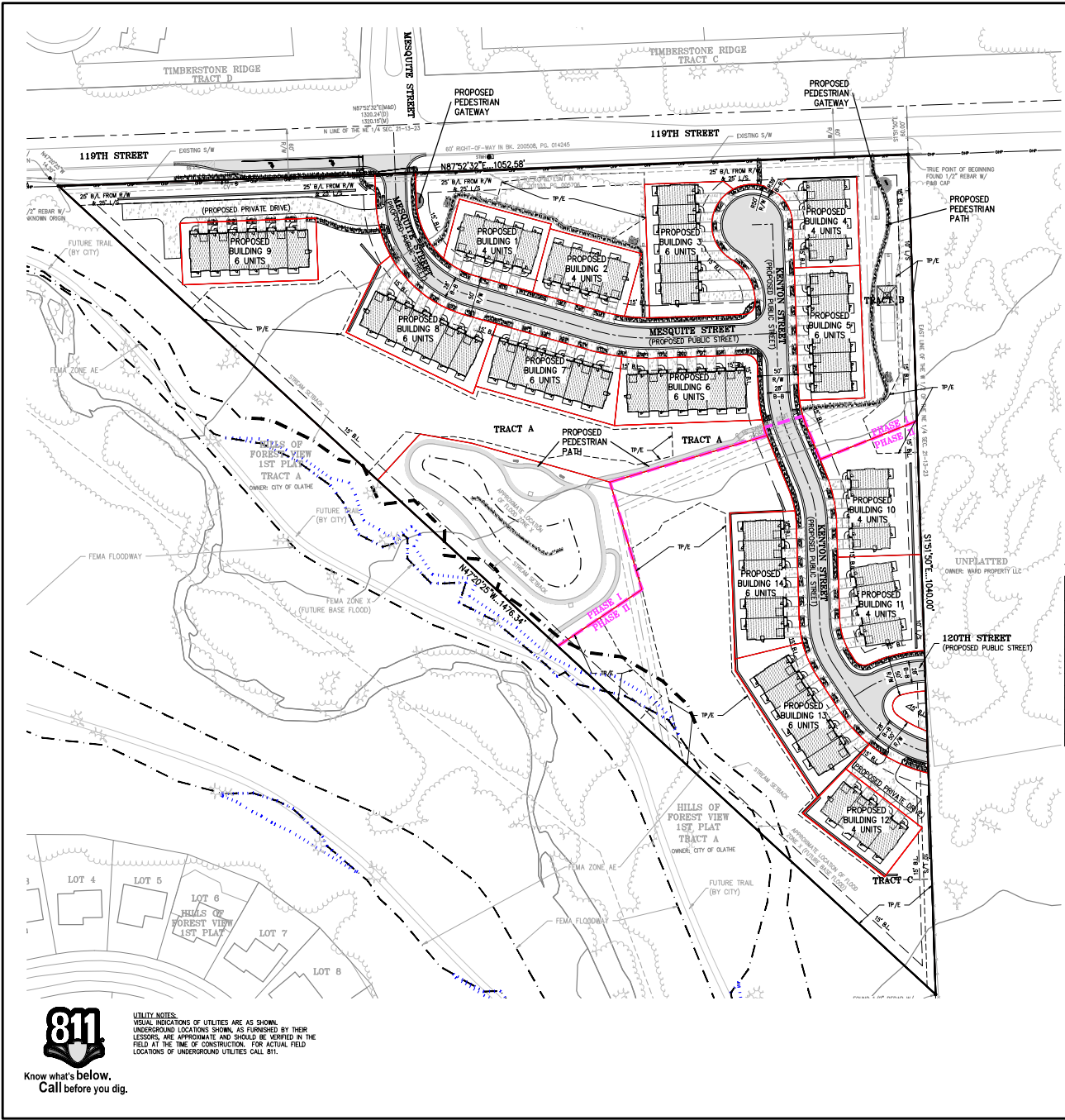
PHILIPS ENGINEERING, INC.
1011 N. Webster
Chickasha, Oklahoma
73015
PHILIPS ENGINEERING, INC.
www.philipsengineering.com



TREE PRESERVATION PLAN
FOREST VIEW TOWNHOMES
CITY OF OLATHE, JOHNSON COUNTY, KANSAS

PROJECT NO.	250799	DATE	10/29/2023
NO.	1	BY	PH
REVISION	REVISED PER CITY COMMENTS	DATE	10/29/2023
NO.	2	BY	PH
REVISION	REVISED PER CITY COMMENTS	DATE	10/29/2023

SHEET
C001



PARCEL	AREA (S.F.)	AREA (AC)
TRACT B	56281.54	1.2920
TRACT D	46441.54	1.0682
PLAT	547338.77	12.5652
TRACT C	46732.98	1.0649
ROW	73571.13	1.6880
TRACT E	1466.91	0.0337
TRACT A	82244.08	2.1776
1	10051.44	0.2307
2	9589.64	0.2201
3	17291.85	0.3970
4	9439.10	0.2165
5	13320.99	0.3058
6	14154.85	0.3250
7	13822.77	0.3173
8	14988.77	0.3443
9	12810.00	0.2941
10	15710.70	0.3607
11	12738.83	0.2924
12	9428.23	0.2164
13	14785.21	0.3394
14	14028.97	0.3221

LEGEND	
— PL —	PROPERTY LINE
— LL —	PROPOSED LOT LINE
— LL —	EXISTING LOT LINE
— R/W —	RIGHT-OF-WAY
—	2' CURB & GUTTER
— B/L —	BUILDING SETBACK LINE
— P/L —	PARKING SETBACK LINE
— L/S —	LANDSCAPE SETBACK LINE
—	PHASING LINE
—	PROPOSED BUILDING
—	ASPHALT PAVEMENT - STANDARD DUTY
—	CONCRETE PAVEMENT
—	CONCRETE SIDEWALK
—	RETAINING WALL W/ HANDRAIL

LEGAL DESCRIPTION:

Part of the NE 1/4 of Section 21, T13S, R23E of the Sixth Principal Meridian, in the City of Olathe, Johnson County, Kansas, more particularly described as follows:

Beginning at the Northwest corner of the NE 1/4 of Section 21, T13S, R23E of the Sixth Principal Meridian, in the City of Olathe, Johnson County, Kansas; thence N 87°52'32" E, along the North line of said NE 1/4, a distance of 1,320.24 feet to the Northeast corner of the W 1/2 of said NE 1/4; thence S 01°51'50" E, along the East line of the W 1/2 of said NE 1/4, a distance of 60.00 feet to a point on the South right-of-way line of 119th Street, as now established, filed at the Register of Deeds Office, Johnson County, Kansas in Book 200508, Page 014245, said point also being the TRUE POINT OF BEGINNING; thence continuing S 01°51'50" E, along the East line of the W 1/2 of said NE 1/4, a distance of 1,040.00 feet to a corner on the Northeastly line of Tract "A", HILLS OF FOREST VIEW, 1ST PLAT, a subdivision of land in the City of Olathe, Johnson County, Kansas; thence N 47°20'25" W, along the Northeastly line of said Tract "A", a distance of 1,476.34 feet to a corner on the North line of said Tract "A", said point also being on the South right-of-way line of said 119th Street and parallel with the North line of said NE 1/4, a distance of 1,052.58 feet to the TRUE POINT OF BEGINNING.

GROSS AREA = ±12.5652 ACRES

ZONING BULK REGULATIONS

EXISTING	ZONING	
	RP-1 & CITY RUR	PROPOSED R-3, COLUMN 2
BUILDING SETBACKS (CODE SECTION 18.30.090)	REQUIRED	PROVIDED
FRONT YARD	5 FT	15 FT
SIDE YARD	NA	7.5 FT
REAR YARD	15 FT	15 FT
CORNER YARD	20 FT	*15 FT
*NA=NEAR REQUESTED		
LANDSCAPE SETBACKS (CODE SECTION 18.15.115)	REQUIRED	PROVIDED
FROM P/L	20 FT	20 FT
FROM R/W	20 FT	20 FT

BUILDING HEIGHTS

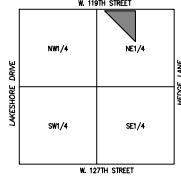
BUILDING DATA	MAXIMUM	PROVIDED
4-UNIT	3 STORIES/40 FEET	26'-8"
6-UNIT	3 STORIES/40 FEET	26'-8"

SITE DATA

LOT 1:		
TOTAL	547,338 S.F. / 12.5652 Ac.	
PHASE I	357,869 S.F. / 8.2155 Ac.	
PHASE II	189,469 S.F. / 4.3497 Ac.	
ZONING:		
EXISTING	RP-1 & CITY RUR	RP-3
PROPOSED		
PHASE I:		
PROPOSED BUILDING UNITS (2.5-STORY)	48 UNITS	
DENSITY	5.84 UNITS PER ACRE	
LENGTH OF STREET	1187 L.F.	
PRIVATE DRIVE	848 S.F.	
PHASE II:		
PROPOSED BUILDING UNITS (2.5-STORY)	24 UNITS	
DENSITY	5.52 UNITS PER ACRE	
LENGTH OF STREET	564 L.F.	
PRIVATE DRIVE	300 S.F.	
TOTAL:		
PROPOSED BUILDING UNITS (2.5-STORY)	72 UNITS	
DENSITY	5.73 UNITS PER ACRE	
LENGTH OF STREET	1,751 L.F.	
PRIVATE DRIVE	1,255 S.F.	
CONNECTIVITY RATIO (MIN. 1.7 REQ'D)	2.25	

PARKING SUMMARY TABLE

PARKING REQUIREMENTS (CODE SECTION 18.30.160)	
REQUIRED - LOT 1	
1.5 PER DWELLING UNIT x 72 UNITS	108
PROVIDED - LOT 1	
DRIVEWAY SPACES	72
GARAGE SPACES	72
TOTAL	144



SCALE: 1"=200'
VICINITY MAP SEC. 21-13-23



UTILITY NOTES:
VISUAL INDICATIONS OF UTILITIES ARE AS SHOWN. UNDERGROUND LOCATIONS SHOWN, AS FURNISHED BY THEIR LESSORS, ARE APPROXIMATE AND SHOULD BE VERIFIED IN THE FIELD AT THE TIME OF CONSTRUCTION. FOR ACTUAL FIELD LOCATIONS OF UNDERGROUND UTILITIES CALL 811.



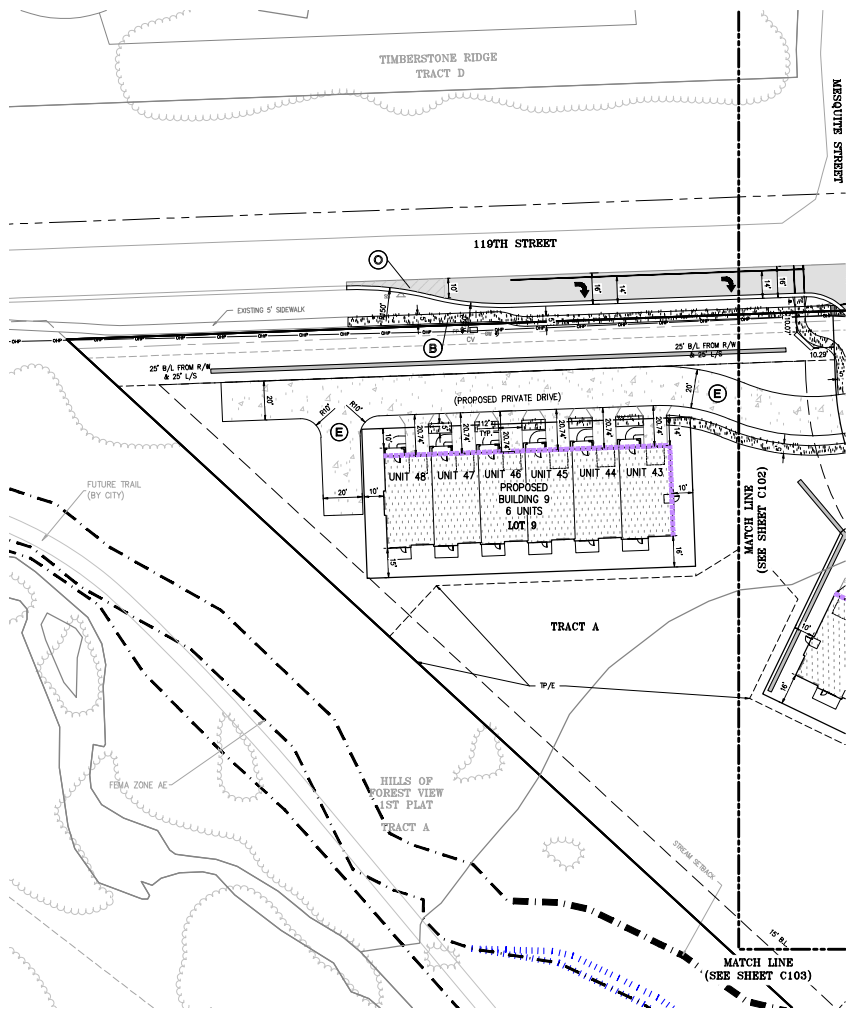
PHILIPS ENGINEERING, INC.
Cory A. Winkler
Chris James Asher
GEO 300-000
PHILIPS ENGINEERING, INC.
www.philipsengineering.com



PRELIMINARY PLAN & DEVELOPMENT PLAN
FOREST VIEW TOWNHOMES
CITY OF OLATHE, JOHNSON COUNTY, KANSAS

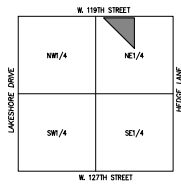
NO.	DATE	BY	FOR	REVISIONS
1	04/17/2020	JW	PHILIPS ENGINEERING, INC.	ISSUED FOR PERMITS
2	04/17/2020	JW	PHILIPS ENGINEERING, INC.	REVISIONS FOR CITY COMMENTS

SHEET
C100



- LEGEND**
- PL — PROPERTY LINE
 - LL — PROPOSED LOT LINE
 - - - LL - - - EXISTING LOT LINE
 - - - R/W - - - RIGHT-OF-WAY
 - 2' CURB & GUTTER
 - B/A — BUILDING SETBACK LINE
 - P/S — PARKING SETBACK LINE
 - L/S — LANDSCAPE SETBACK LINE
 - PHASING LINE
 - PROPOSED BUILDING
 - ASPHALT PAVEMENT - STANDARD DUTY
 - CONCRETE PAVEMENT
 - CONCRETE SIDEWALK
 - RETAINING WALL W/ HANDRAIL
 - PRIMARY FACADES

- SITE KEY NOTES:**
- (A) CONSTRUCT PUBLIC 2 FT TYPE "A" HELL BACK CONCRETE CURB & GUTTER PER CITY OF OLATHE STANDARD DETAIL 21-1.
 - (B) CONSTRUCT PUBLIC 5 FT WIDE CONCRETE SIDEWALK PER CITY OF OLATHE STANDARD DETAIL 21-4.
 - (C) CONSTRUCT PUBLIC SIDEWALK RAMP (TYPE I) WITH DETECTABLE WARNING PER CITY OF OLATHE STANDARD DETAIL 21-10.
 - (D) CONSTRUCT PUBLIC SIDEWALK RAMP (TYPE II) WITH DETECTABLE WARNING PER CITY OF OLATHE STANDARD DETAIL 21-10.
 - (E) CONSTRUCT CONCRETE PAVEMENT.
 - (F) INSTALL (3) - DIAMOND REFLECTORIZED PANELS (DM-1)
 - (G) CONSTRUCT CONCRETE OR ASPHALT PATH.
 - (H) INSTALL MONUMENT SIGN (REFER TO ARCH. PLANS).
 - (I) CONSTRUCT RESIDENTIAL DRIVE (TYPE A CURB) PER CITY OF OLATHE STANDARD DETAIL 21-12.
 - (J) CONSTRUCT PEDESTRIAN GATEWAY WITH STAMPED COLORED CONCRETE, BENCH, & LANDSCAPING.
 - (L) CONSTRUCT CONCRETE PAD FOR TRASH AND RECYCLING BINS.
 - (M) RELOCATED PEDESTRIAN CROSSING SIGN WITH FLASHING BEACONS.
 - (N) CONSTRUCT PAINTED CROSSWALK WITH TWO (2) HIGH WHITE (YELLOW) STRIPES SPACED 5 FEET APART ALONG TRAVEL PATH.
 - (O) INSTALL LAKE WEEDING (REFER TO OLATHE STANDARD DETAIL 13-7)
 - (P) CONSTRUCT PICNIC STRUCTURE AND YARD GAMES (RE: LANDSCAPE).



SCALE: 1"=200'
VICINITY MAP SEC. 21-13-23



UTILITY NOTES:
VISUAL INDICATIONS OF UTILITIES ARE AS SHOWN. UNDERGROUND LOCATIONS SHOWN, AS FURNISHED BY THEIR LESSORS, ARE APPROXIMATE AND SHOULD BE VERIFIED IN THE FIELD AT THE TIME OF CONSTRUCTION. FOR ACTUAL FIELD LOCATIONS OF UNDERGROUND UTILITIES CALL 811.



Know what's below.
Call before you dig.

PHILIPS ENGINEERING, INC.
1001 N. Winchester
Olathe, Kansas 66041
(913) 765-1000
www.philipseng.com



SITE PLAN - ENLARGED
FOREST VIEW TOWNHOMES
CITY OF OLATHE, JOHNSON COUNTY, KANSAS

NO.	DATE	BY	CHKD.	REVISIONS
1	04/17/2024	JW	JW	ISSUED FOR CITY COMMENTS
2	04/17/2024	JW	JW	REVISIONS PER CITY COMMENTS

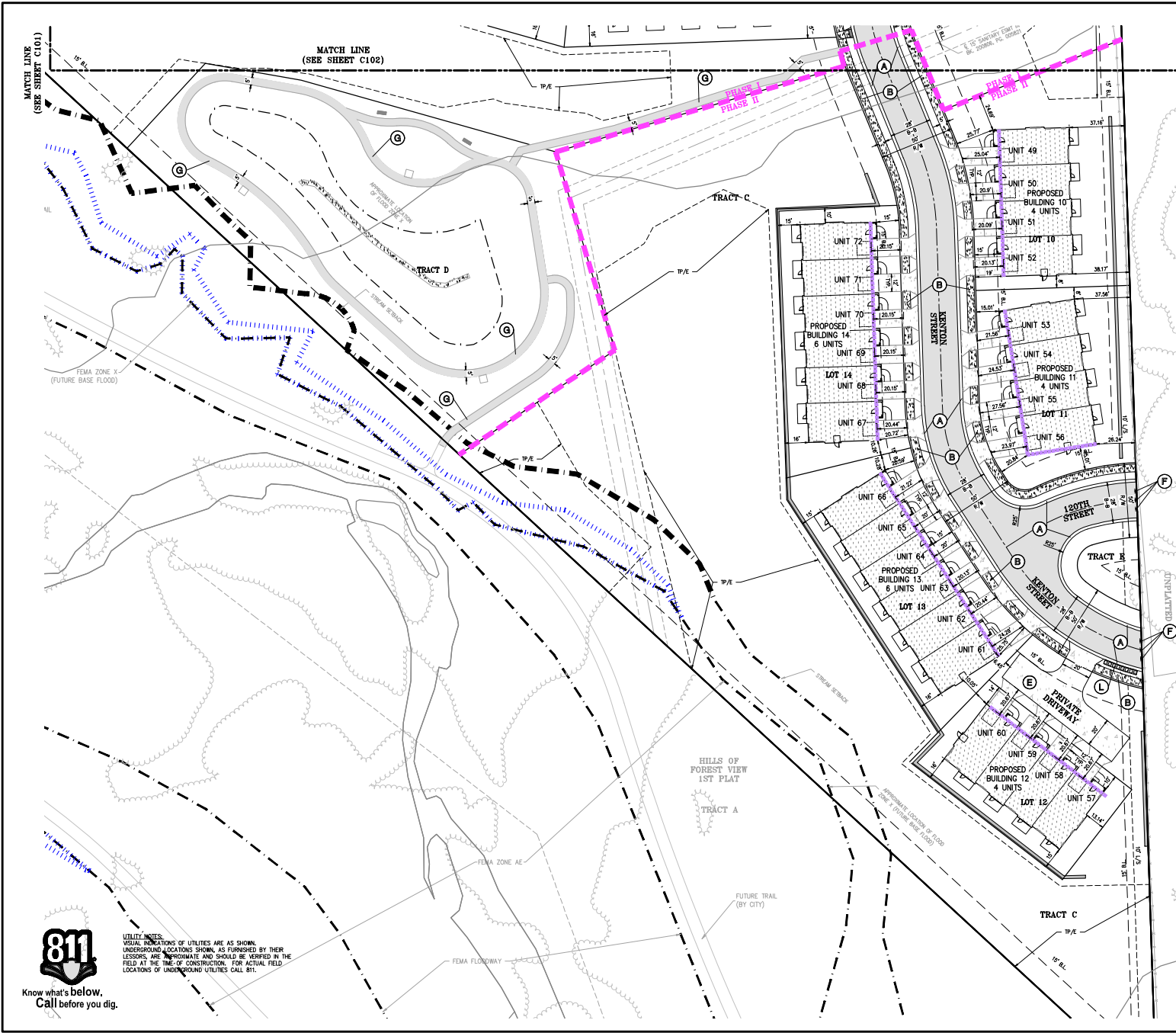
PROJECT NO. 25099
DATE OF APPROVAL: 04/17/2024
DATE OF APPROVAL: 04/17/2024
DATE OF APPROVAL: 04/17/2024

SHEET
C101

PROJECT NO. 250999
 DATE: 04/17/2024
 DRAWN BY: J. W. BISHOP
 CHECKED BY: J. W. BISHOP
 APPROVED BY: J. W. BISHOP
 PROJECT LOCATION: 120TH STREET & BELLEVILLE DRIVE, OLAHE, MO
 CLIENT: PHASE ENGINEERING, INC.
 PROJECT: HILLS OF FOREST VIEW 1ST PLAT
 SHEET: C103

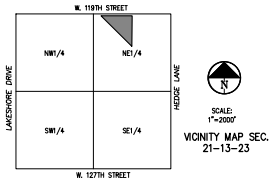
811
 Know what's below.
 Call before you dig.

UTILITY NOTES:
 VISUAL INDICATIONS OF UTILITIES ARE AS SHOWN.
 UNDERGROUND LOCATIONS SHOWN, AS FURNISHED BY THEIR
 LESSORS, ARE APPROXIMATE AND SHOULD BE VERIFIED IN THE
 FIELD AT THE TIME OF CONSTRUCTION. FOR ACTUAL FIELD
 LOCATIONS OF UNDERGROUND UTILITIES CALL 811.



- LEGEND**
- PL — PROPERTY LINE
 - - - LL — PROPOSED LOT LINE
 - - - LL — EXISTING LOT LINE
 - - - R/W — RIGHT-OF-WAY
 - 2" CURB & GUTTER
 - S/A — BUILDING SETBACK LINE
 - P/S — PARKING SETBACK LINE
 - L/S — LANDSCAPE SETBACK LINE
 - PHASING LINE
 - PROPOSED BUILDING
 - ASPHALT PAVEMENT - STANDARD DUTY
 - CONCRETE PAVEMENT
 - CONCRETE SIDEWALK
 - RETAINING WALL W/ HANDRAIL
 - PRIMARY FACADES

- SITE KEY NOTES:**
- (A) CONSTRUCT PUBLIC 2 FT TYPE "A" ROLL BACK CONCRETE CURB & GUTTER PER CITY OF OLAHE STANDARD DETAIL 21-1.
 - (B) CONSTRUCT PUBLIC 5 FT WIDE CONCRETE SIDEWALK PER CITY OF OLAHE STANDARD DETAIL 21-10.
 - (C) CONSTRUCT PUBLIC SIDEWALK RAMP (TYPE 0) WITH DETECTABLE WARNING PER CITY OF OLAHE STANDARD DETAIL 21-10.
 - (D) CONSTRUCT PUBLIC SIDEWALK RAMP (RIB BLOCK) WITH DETECTABLE WARNING PER CITY OF OLAHE STANDARD DETAIL 21-10.
 - (E) CONSTRUCT CONCRETE PAVEMENT.
 - (F) INSTALL (3) - DIAMOND REFLECTORIZED PANELS (DM-1)
 - (G) CONSTRUCT CONCRETE OR ASPHALT PATH.
 - (H) INSTALL MONUMENT SIGN (REFER TO ARCH PLANS).
 - (I) CONSTRUCT RESIDENTIAL DRIVE (TYPE A CURB) PER CITY OF OLAHE STANDARD DETAIL 21-11.
 - (J) CONSTRUCT PEDESTRIAN GATEWAY WITH STAMPED COLORED CONCRETE, BENCH, & LANDSCAPING.
 - (K) CONSTRUCT CONCRETE PAD FOR TRASH AND RECYCLING BINS.
 - (L) RELOCATED PEDESTRIAN CROSSING SIGN WITH FLASHING BEACONS.
 - (M) CONSTRUCT PAINTED CROSSWALK WITH TWO 6 INCH WIDE WHITE (YELLOW STRIPES SPACED 5 FEET APART ALONG TRAVEL PATH).
 - (N) INSTALL LANE WIDENING (REFER TO OLAHE STANDARD DETAIL 13-7)
 - (P) CONSTRUCT POND STRUCTURE AND YARD GAMES (RE: LANDSCAPE).



PHASE ENGINEERING, INC.
 1201 N. Woodruff
 Olathe, Kansas 66041
 Phone: 816.251.1100
 Fax: 816.251.1101
 www.phaseeng.com



SITE PLAN - ENLARGED
 FOREST VIEW TOWNHOMES
 CITY OF OLAHE, JOHNSON COUNTY, KANSAS

NO.	DATE	REVISION
1	04/17/2024	ISSUED FOR PERMITS
2	04/17/2024	REVISED PER CITY COMMENTS

SHEET
C103



- LEGEND**
- PL — PROPERTY LINE
 - LL — LOT LINE
 - - - R/W - RIGHT-OF-WAY
 - EXISTING CONTOURS
 - PROPOSED CONTOURS
 - EXISTING STORM SEWER
 - PROPOSED STORM PIPE
 - PROPOSED NET CURB & GUTTER
 - PROPOSED RETAINING WALL W/ HANDRAIL
 - SLAB ON GRADE
 - PHASING LINE
- S.O.G.

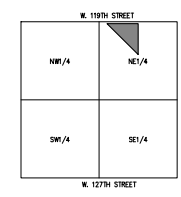
BENCHMARK:
 JOHNSON COUNTY BENCHMARK NO.236 ELEV.=895.72
 2" ALUMINUM MONUMENT

AT K-7 HIGHWAY & 119TH STREET, GO WEST ON 119TH STREET ± 0.6 MILES TO 1ST CONCRETE BRIDGE OVER LITTLE CEDAR CREEK, BEING THE 1ST BRIDGE WEST OF K-7 HIGHWAY.

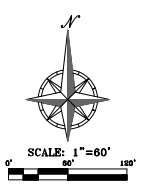
FLOOD NOTE:
 A PORTION OF THIS PROPERTY LIES WITHIN ZONE AE, DEFINED AS SPECIAL FLOOD HAZARD AREAS (SFHA) SUBJECT TO INUNDATION BY THE 1% ANNUAL CHANCE FLOOD.

A PORTION OF THIS PROPERTY LIES WITHIN ZONE X(FUTURE BASE FLOOD), DEFINED AS AREAS OF 0.2% ANNUAL CHANCE FLOOD; AREAS OF 1% ANNUAL CHANCE FLOOD WITH AVERAGE DEPTHS OF LESS THAN 1 FOOT OR WITH DRAINAGE AREAS LESS THAN 1 SQUARE MILE; AND AREAS PROTECTED BY LEVEES FROM 1% ANNUAL CHANCE FLOOD. AREAS OF 1% ANNUAL CHANCE FLOOD BASED ON FUTURE CONDITIONS HYDROLOGY. NO BASE FLOOD ELEVATIONS DETERMINED.

THE REMAINDER OF THE PROPERTY LIES WITHIN ZONE X, DEFINED AS AREAS DETERMINED TO BE OUTSIDE THE 0.2% ANNUAL CHANCE FLOODPLAN, AS SHOWN ON THE FLOOD INSURANCE RATE MAP PREPARED BY THE FEDERAL EMERGENCY MANAGEMENT AGENCY FOR THE CITY OF OLAHE, COMMUNITY NO. 200173, JOHNSON COUNTY, KANSAS, MAP NO. 20091C0062C, AND DATED AUGUST 3, 2009.



SCALE: 1"=2000'
 VICINITY MAP SEC. 21-15-23



UTILITY NOTES:
 VISUAL INDICATIONS OF UTILITIES ARE AS SHOWN. UNDERGROUND LOCATIONS SHOWN AS FURNISHED BY THEIR LESSORS ARE APPROXIMATE AND SHOULD BE VERIFIED IN THE FIELD AT THE TIME OF CONSTRUCTION. FOR ACTUAL FIELD LOCATIONS OF UNDERGROUND UTILITIES CALL 811.

811
 Know what's below.
 Call before you dig.

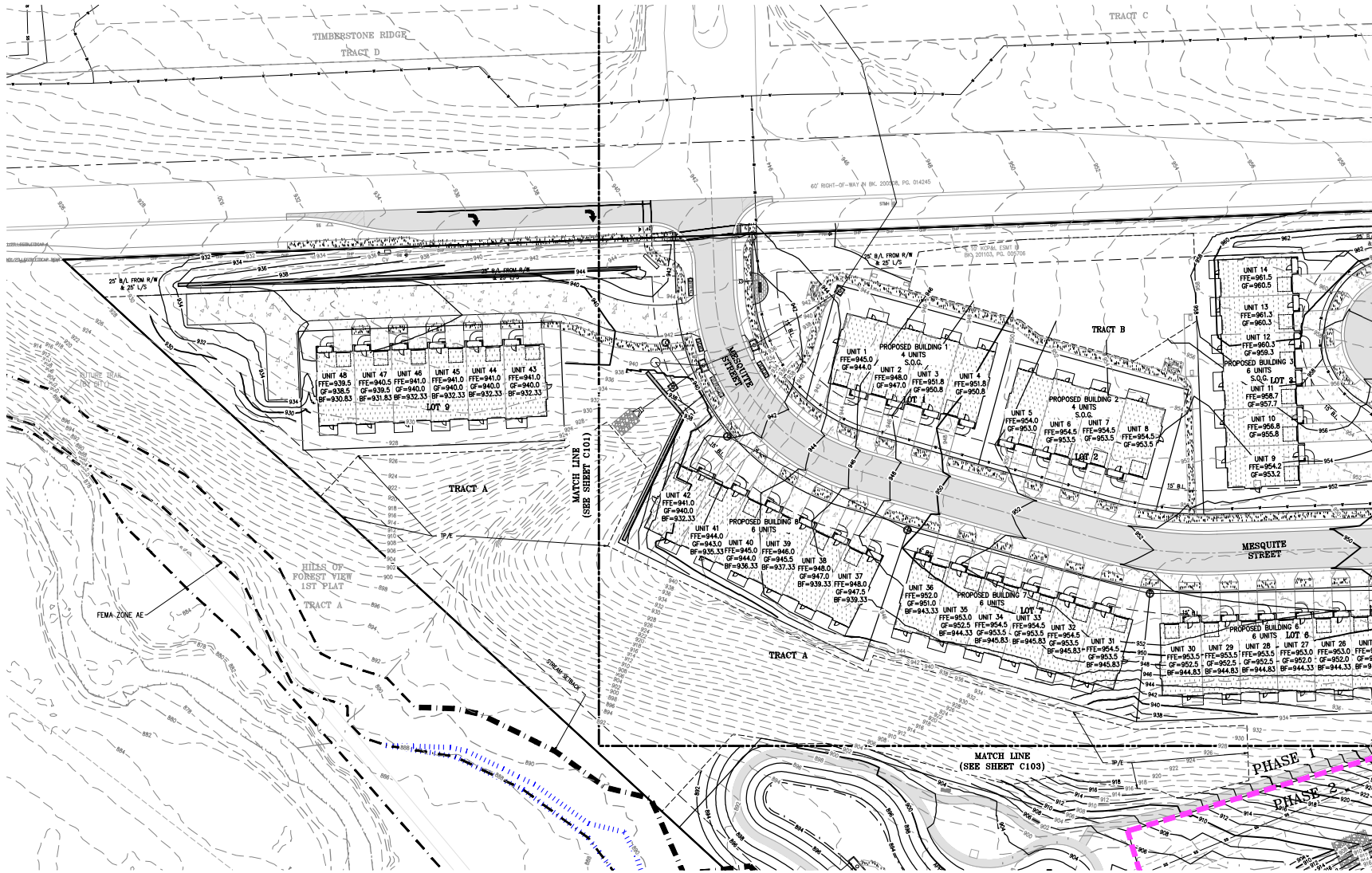
HELPS ENGINEERING, INC.
 1001 N. Winchester
 Olathe, MO 64040
 Phone: (781) 333-1000
 Fax: (781) 333-1000
 www.helpsengineering.com



GRADING PLAN - OVERALL
 FOREST VIEW TOWNHOMES
 CITY OF OLAHE, JOHNSON COUNTY, KANSAS

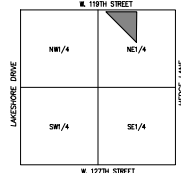
NO.	DATE	BY	CHK.	REVISION
1	03/07/2009			REVISED PER CITY COMMENTS
2	04/17/2009			REVISED PER CITY COMMENTS

SHEET
C200



UTILITY NOTES:
 VISUAL INDICATIONS OF UTILITIES ARE AS SHOWN.
 UNDERGROUND LOCATIONS SHOWN, AS FURNISHED BY THEIR
 LESSORS, ARE APPROXIMATE AND SHOULD BE VERIFIED IN THE
 FIELD AT THE TIME OF CONSTRUCTION. FOR ACTUAL FIELD
 LOCATIONS OF UNDERGROUND UTILITIES CALL 811.

811
 Know what's below.
 Call before you dig.



SCALE: 1"=200'
 VICINITY MAP SEC.
 21-13-23



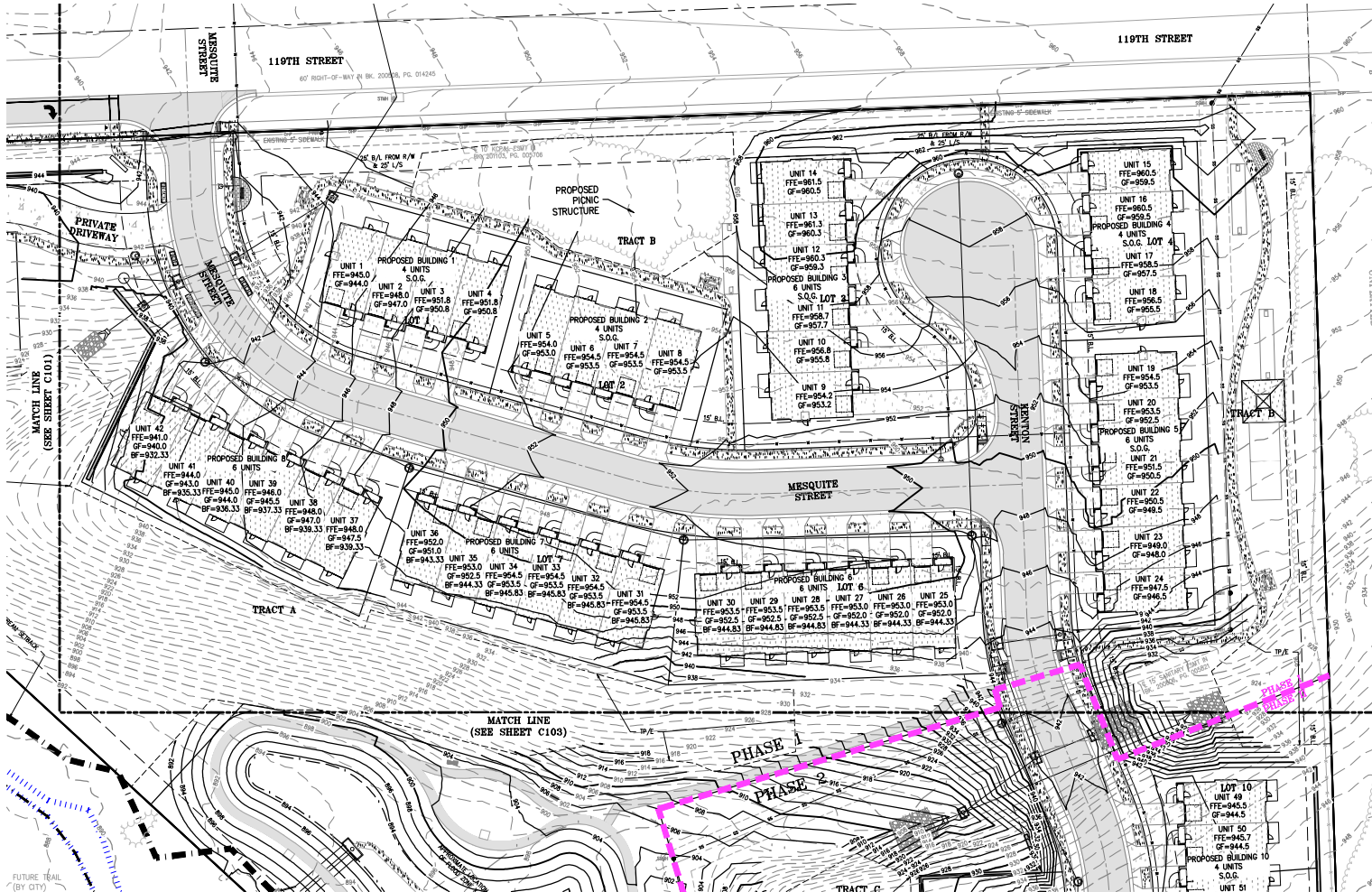
PHILIPS ENGINEERING, INC.
 1001 N. Winchester
 Olathe, Kansas 66041
 (913) 766-1000
 www.philipseng.com



GRADING PLAN - ENLARGED
 FOREST VIEW TOWNHOMES
 CITY OF OLATHE, JOHNSON COUNTY, KANSAS

PROJECT NO.	25099
DATE	01/17/2008
DESIGNER	PHILIPS ENGINEERING, INC.
DATE OF APPROVAL	01/17/2008
APPROVED BY	[Signature]
DATE OF APPROVAL	01/17/2008
APPROVED BY	[Signature]

SHEET
C201



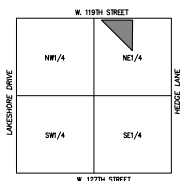
- LEGEND**
- PL PROPERTY LINE
 - - - LL LOT LINE
 - - - R/W RIGHT-OF-WAY
 - PHASING LINE
 - - - EXISTING CONTOURS
 - - - PROPOSED CONTOURS
 - EXISTING STORM SEWER
 - PROPOSED STORM PIPE
 - PROPOSED MET CURB & GUTTER
 - PROPOSED DRY CURB & GUTTER
 - PROPOSED RETAINING WALL W/ HANDBAIL
 - SLAB ON GRADE
 - PROPOSED SPOT ELEVATION
 - LC LP OF CUTTER
 - TC TOP OF CURB
 - SW SIDEWALK
 - ME MATCH EXISTING
 - HP HIGH POINT
 - LP LOW POINT
 - F TOP OF PAVEMENT
 - GR GREENING ELEVATION
 - BS BOTTOM OF STRUCTURE
 - TS TOP OF STEPS
 - BW GRADE AT BOTTOM OF WALL
 - TW GRADE AT TOP OF WALL
- S.O.G. 100.00

FUTURE TRAIL (BY CITY)



UTILITY NOTES:
 VISUAL INDICATIONS OF UTILITIES ARE AS SHOWN. UNDERGROUND LOCATIONS SHOWN, AS FURNISHED BY THEIR LESSORS, ARE APPROXIMATE AND SHOULD BE VERIFIED IN THE FIELD AT THE TIME OF CONSTRUCTION. FOR ACTUAL FIELD LOCATIONS OF UNDERGROUND UTILITIES CALL 811.

Know what's below.
 Call before you dig.



SCALE: 1"=300'
 VICINITY MAP SEC. 21-13-23



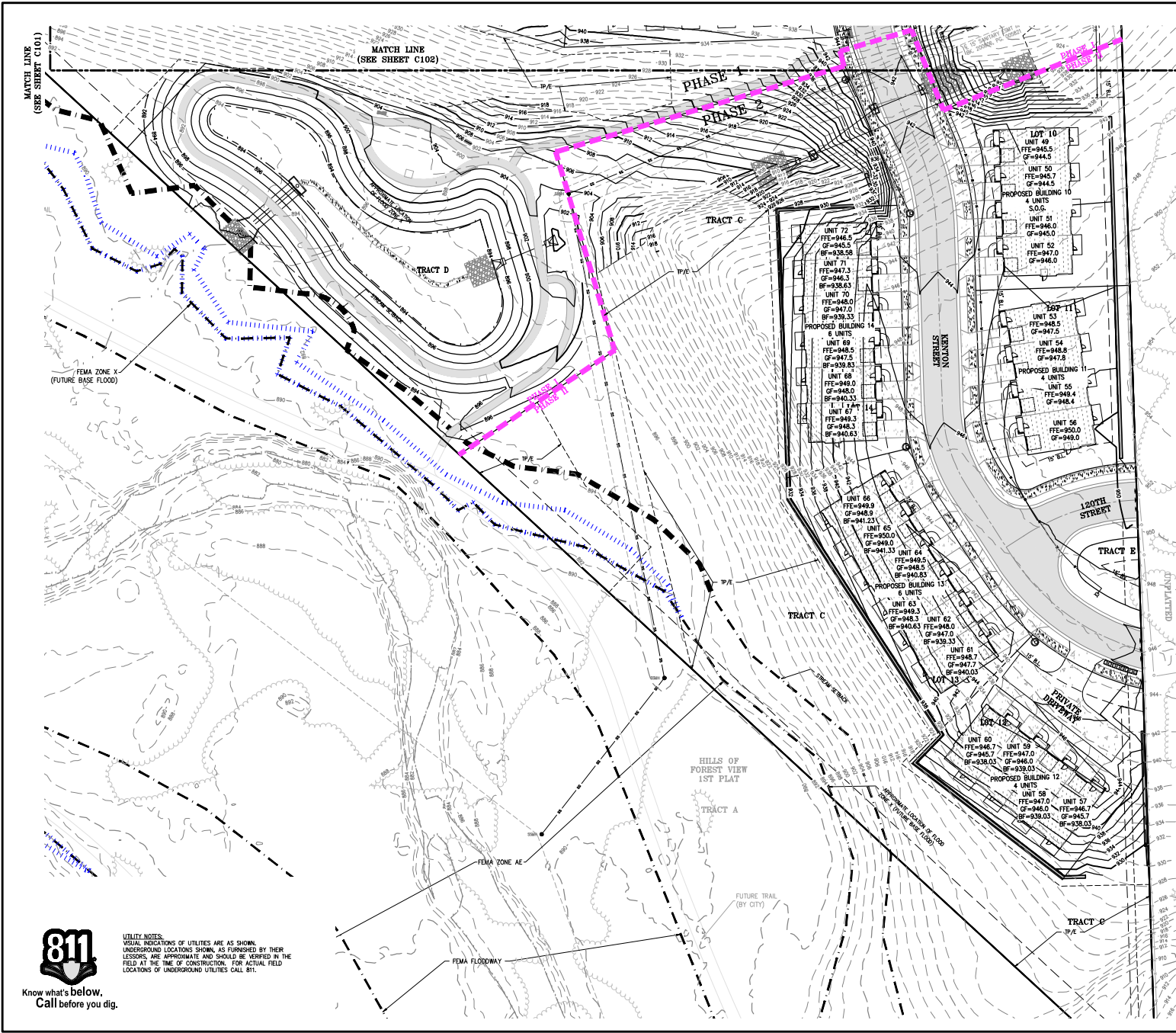
PHILIPS ENGINEERING, INC.
 1001 N. Winchester
 Overland Park, Kansas 66204
 (913) 339-9900
 www.philipseng.com



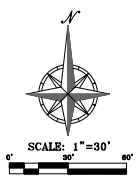
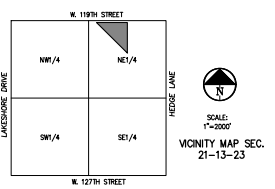
GRADING PLAN - ENLARGED
 FOREST VIEW TOWNHOMES
 CITY OF OLATHE, JOHNSON COUNTY, KANSAS

PROJECT NO.	250996
DATE	03/17/2024
DESIGNER	PHILIPS ENGINEERING, INC.
DATE OF APPROVAL	03/17/2024
APPROVED BY	[Signature]
DATE OF APPROVAL	03/17/2024
APPROVED BY	[Signature]

SHEET
C202



- LEGEND**
- PL PROPERTY LINE
 - - - LL LOT LINE
 - - - R/W RIGHT-OF-WAY
 - PHASING LINE
 - EXISTING CONTOURS
 - PROPOSED CONTOURS
 - EXISTING STORM SEWER
 - PROPOSED STORM PIPE
 - PROPOSED WET CURB & GUTTER
 - PROPOSED DRY CURB & GUTTER
 - PROPOSED RETAINING WALL W/ HANDRAIL
 - S.O.G. SLAB ON GRADE
 - PROPOSED SPOT ELEVATION
 - LG LP OF GUTTER
 - TC TOP OF CURB
 - SW SIDEWALK
 - ME MASON EXISTING
 - HP HIGH POINT
 - LP LOW POINT
 - P TOP OF PAVEMENT
 - TS TOP OF STRUCTURE
 - BS BOTTOM OF STEPS
 - OK GROUND ELEVATION
 - TS TOP OF STEPS
 - BM GRADE AT BOTTOM OF WALL
 - TW GRADE AT TOP OF WALL



PHASE ENGINEERING, INC.
 1014 N. Webster
 Suite 100
 Olathe, Kansas 66061
 Phone: 781-333-3333
 Fax: 781-333-3334
 www.phaseeng.com

PHASING
 PHASING INFORMATION

GRADING PLAN - ENLARGED
 FOREST VIEW TOWNHOMES
 CITY OF OLATHE, JOHNSON COUNTY, KANSAS

PROJECT NO.	250999
DATE	11/17/2028
SCALE	1"=2000'
DESIGNED BY	PHASE ENGINEERING, INC.
CHECKED BY	PHASE ENGINEERING, INC.
DATE OF APPROVAL	11/17/2028
APPROVED BY	PHASE ENGINEERING, INC.
DATE OF APPROVAL	11/17/2028
APPROVED BY	PHASE ENGINEERING, INC.
DATE OF APPROVAL	11/17/2028
APPROVED BY	PHASE ENGINEERING, INC.

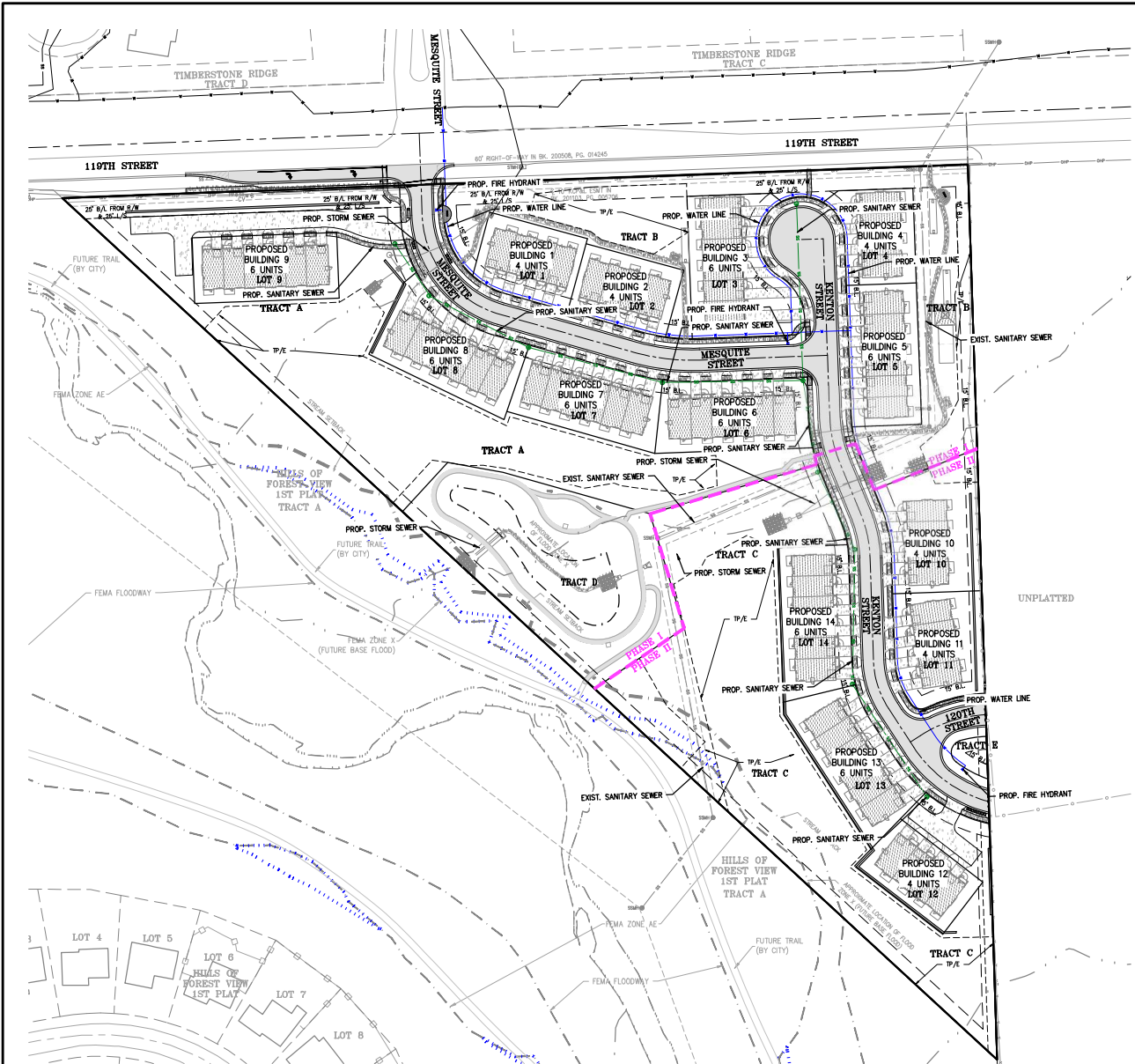
SHEET
C203



Know what's below.
 Call before you dig.

UTILITY NOTES:
 VISUAL INDICATIONS OF UTILITIES ARE AS SHOWN.
 UNDERGROUND LOCATIONS SHOWN, AS FURNISHED BY THEIR
 LESSORS, ARE APPROXIMATE AND SHOULD BE VERIFIED IN THE
 FIELD AT THE TIME OF CONSTRUCTION. FOR ACTUAL FIELD
 LOCATIONS OF UNDERGROUND UTILITIES CALL 811.

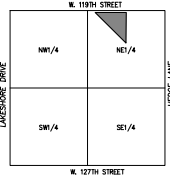
\Users\jordan\My Documents\Grading Plan - ENLARGED.dwg 11/17/2028 11:36am John Webber



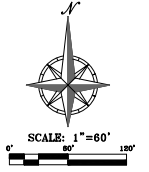
NOTE:
 ALL TOWNHOMES TO HAVE FIRE SUPPRESSION. ADDITIONAL FIRE HYDRANTS WILL BE PROVIDED TO MEET FIRE CODE STANDARDS AT PERMIT STAGE. HYDRANTS WILL BE PROVIDED WITHIN 100 FT OF ALL FIRE DEPARTMENT CONNECTIONS.

- LEGEND**
- PL — PROPERTY LINE
 - LL — LOT LINE
 - R/W — RIGHT-OF-WAY
 - COM — EXISTING COMMUNICATIONS LINE
 - OHC — EXISTING OVERHEAD COMMUNICATIONS LINE
 - G — EXISTING GAS LINE
 - BE — EXISTING BURIED ELECTRIC LINE
 - OHP — EXISTING OVERHEAD POWER LINE
 - SS — EXISTING SANITARY SEWER LINE
 - — EXISTING STORM SEWER LINE
 - W — EXISTING WATER LINE
 - G — PROPOSED GAS LINE
 - BE — PROPOSED BURIED ELECTRIC LINE
 - SS — PROPOSED SANITARY SEWER LINE
 - — PROPOSED STORM SEWER LINE
 - W — PROPOSED WATER LINE
 - F — PROPOSED FIRE LINE
 - STM — PROPOSED SECONDARY STORM
 - COM — PROPOSED COMMUNICATIONS LINE
 - — PHASING LINE

- UTILITY COMPANIES:**
- ATMOS ENERGY TERRITORY
 ATMOS ENERGY
 CAMERON PARKS (CAMERON.PARKS@ATMOSENERGY.COM) 25200 W. 110TH TERRACE OLAHIE, KS 66061 (816) 560-1970 – OFFICE
 - EVERY (METRO) CONTACT SOUTHERN JOCO
 EVERY
 JUSTIN AMBERSON (JUSTIN.AMBERSON@EVERY.COM) 16215 W. 108TH STREET LEXENA, KS 66219 (816) 810-4363
 - CITY OF OLAHIE – PUBLIC SEWER
 CHRIS FARNEY (C.FARNEY@OLATHIANS.ORG) 10747 RENNER BLVD. LEXENA, KS 66219 (913) 971-9451
 - WATER DISTRICT NO. 1 OF JOHNSON COUNTY
 10747 RENNER BLVD. LEXENA, KS 66219
 - WATER MAINS:
 ELIZABETH MALONEY (EMALONEY@WATERONE.ORG) (913) 895-5467 – OFFICE
 - WATER SERVICES:
 CHRIS ANDERSON (CANDERSON@WATERONE.ORG) (913) 895-5754 – OFFICE
 - GOOGLE FIBER
 LAUREN MAROUCCI (KC-GOOGLE-UC@GOOGLE.COM) (913) 663-1800



SCALE:
 1"=2000'
 VICINITY MAP SEC.
 21-13-23



PHILIPS ENGINEERING, INC.
 1001 N. Winchester
 Olathe, Kansas 66041
 (913) 766-9999
 www.philipsengineering.com



UTILITY PLAN
 FOREST VIEW TOWNHOMES
 CITY OF OLAHIE, JOHNSON COUNTY, KANSAS

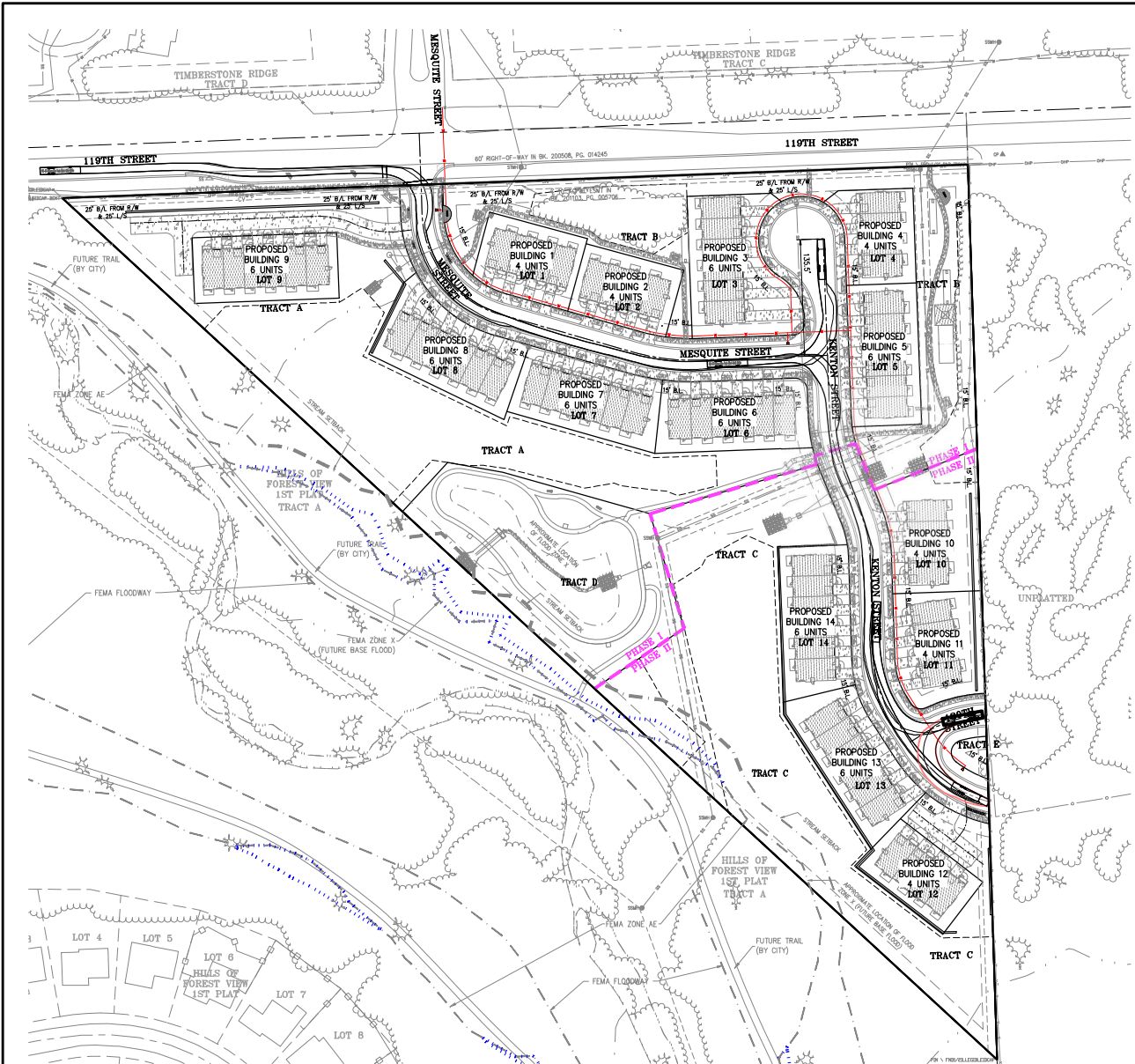
NO.	DATE	BY	CHKD.	REV.	DESCRIPTION
1	04/17/2008	JM	JM		ISSUED FOR PERMITS
2	04/17/2008	JM	JM		REVISED PER CITY COMMENTS

SHEET
C300

811
 Know what's below.
 Call before you dig.

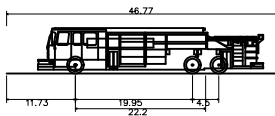
UTILITY NOTES:
 VISUAL INDICATIONS OF UTILITIES ARE AS SHOWN. UNDERGROUND LOCATIONS SHOWN, AS FURNISHED BY THEIR LESSORS, ARE APPROXIMATE AND SHOULD BE VERIFIED IN THE FIELD AT THE TIME OF CONSTRUCTION. FOR ACTUAL FIELD LOCATIONS OF UNDERGROUND UTILITIES CALL 811.

I:\projects\1007091\1007091.dwg (1007091) - CIVIL.dwg (1007091) - 04/17/2008 11:30am john.walker

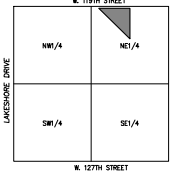


- LEGEND**
- PL — PROPERTY LINE
 - LL — LOT LINE
 - - - R/W - - - RIGHT-OF-WAY
 - - - W - - - PROPOSED WATER LINE
 - - - F - - - PROPOSED FIRE LINE
 - ⊕ — FIRE HYDRANT
 - P — PAVING LINE

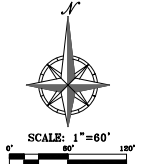
NOTE:
 ALL TOWNHOMES TO HAVE FIRE SUPPRESSION. ADDITIONAL FIRE HYDRANTS WILL BE PROVIDED TO MEET FIRE CODE STANDARDS AT PERMIT STAGE. HYDRANTS WILL BE PROVIDED WITHIN 100 FT OF ALL FIRE DEPARTMENT CONNECTIONS.



PEI-47-Pumper-Fire-Truck-(Dual-Axle)-Olathe
 Overall Length 46.770ft
 Overall Width 8.167ft
 Overall Body Height 7.745ft
 Min Body Ground Clearance 0.658ft
 Track Width 8.167ft
 Lock-to-lock time 5.00s
 Max Wheel Angle 45.00°



SCALE: 1"=200'
 VICINITY MAP SEC. 21-13-23



Know what's below.
 Call before you dig.

UTILITY NOTES:
 VISUAL INDICATIONS OF UTILITIES ARE AS SHOWN. UNDERGROUND LOCATIONS SHOWN, AS FURNISHED BY THEIR LESSORS, ARE APPROXIMATE AND SHOULD BE VERIFIED IN THE FIELD AT THE TIME OF CONSTRUCTION. FOR ACTUAL FIELD LOCATIONS OF UNDERGROUND UTILITIES CALL 811.

PHILIPS ENGINEERING, INC.
 1001 N. Winchester
 Olathe, Kansas 66061
 (913) 765-4600
 www.philipseng.com



FIRE PROTECTION PLAN - TRUCK TURN
 FOREST VIEW TOWNHOMES
 CITY OF OLATHE, JOHNSON COUNTY, KANSAS

NO.	DATE	BY	FOR
1	11/17/2020	PHILIPS	REVISED PER CITY COMMENTS
2	01/17/2021	PHILIPS	REVISED PER CITY COMMENTS

SHEET
C301

I:\projects\2020\13-23\21-13-23\Fire Protection\Drawings\03-Fire Protection Plan - Truck Turn.dwg Apr 17, 2020 11:30am john.meser

