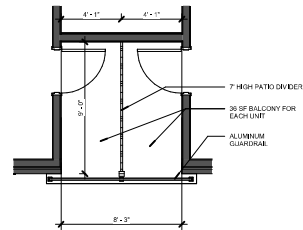
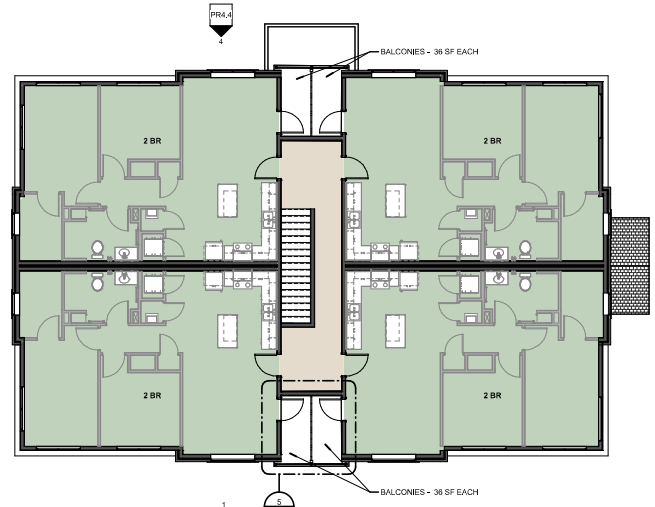


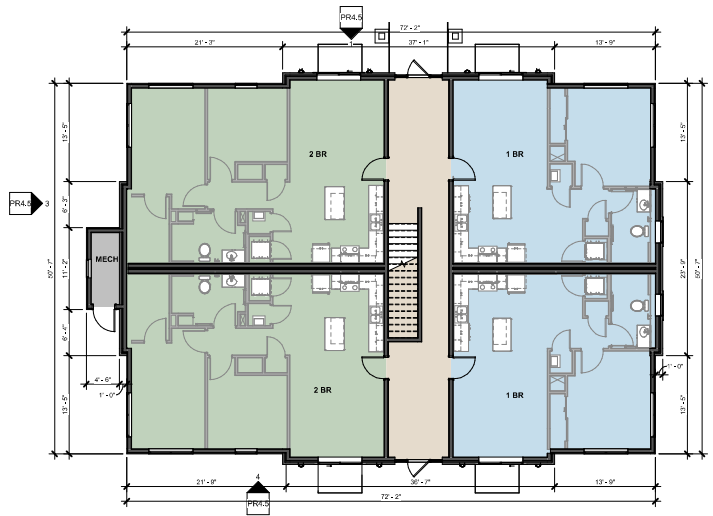
**SECOND FLOOR PLAN - BLDG 4 (THIRD SIM)**  
 1/8" = 1'-0"



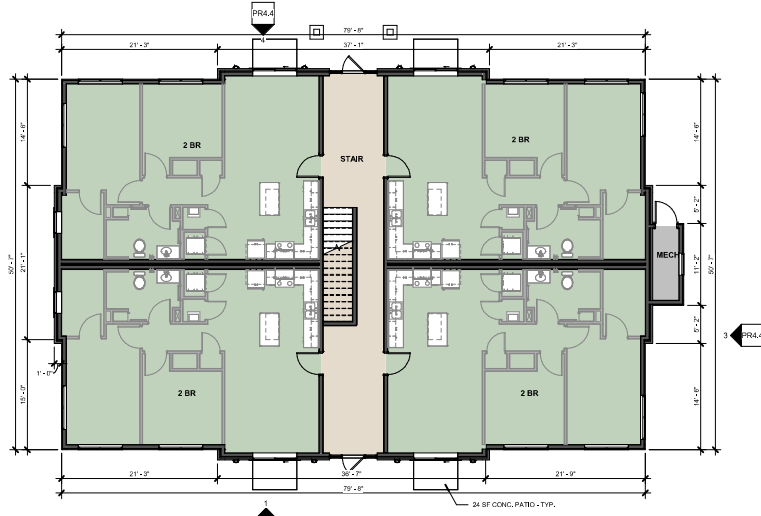
**TYPICAL TERRACE PLAN**  
 1/4" = 1'-0"  
 (UPPER FLOORS AT BUILDINGS 3-13)



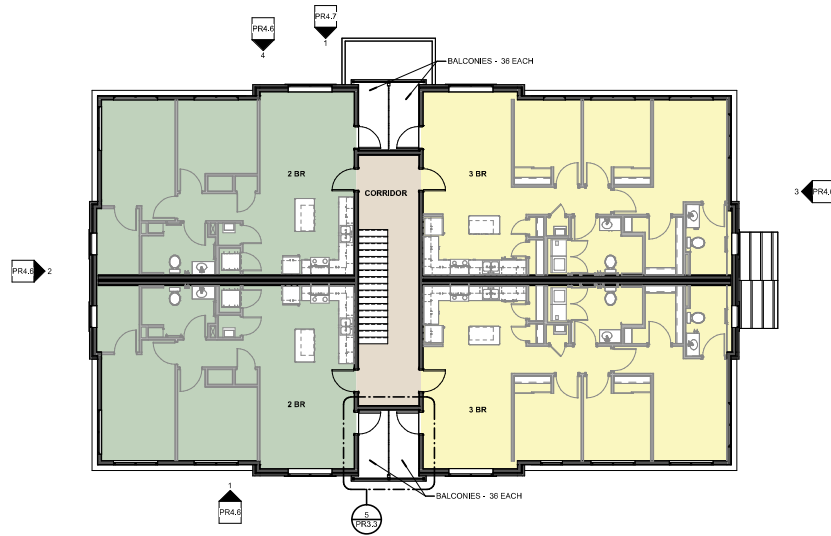
**SECOND FLOOR PLAN - BLDG 3 (THIRD SIM)**  
 1/8" = 1'-0"



**FIRST FLOOR PLAN - BLDG 4**  
 1/8" = 1'-0"



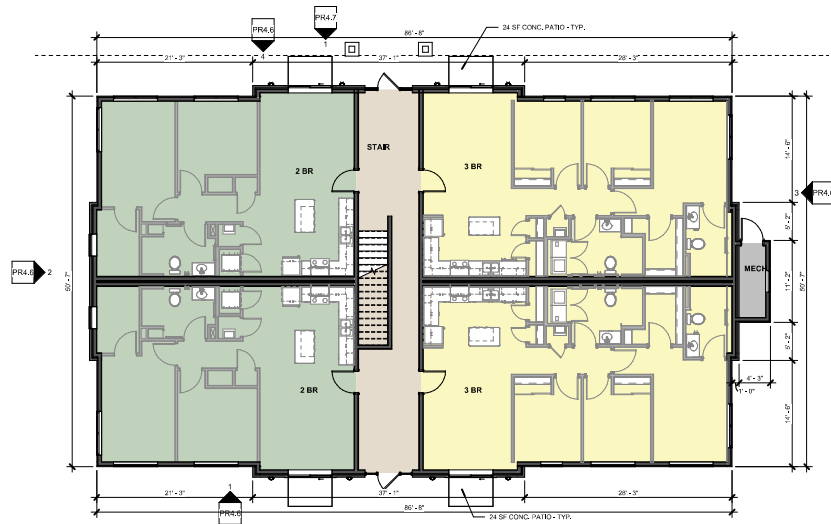
**FIRST FLOOR PLAN - BLDG 3**  
 1/8" = 1'-0"



SECOND FLOOR PLAN - BLDG 9

1/8" = 1'-0"

(BUILDINGS 10-13 SIM.)



FIRST FLOOR PLAN - BLDG 9

1/8" = 1'-0"

(BUILDINGS 10-13 SIM.)

**EXTERIOR MATERIAL CALCULATIONS**

ELEVATION LOCATION	FAÇADE TYPE	CLASS 1 MATERIALS						CLASS 2	CLASS 3		% CLASS 1 MATERIALS	% CLASS 1 REQ'D	FIRST FLOOR TOTAL AREA	UPPER FLOOR TOTAL AREA	TOTAL WALL AREA	% FIRST FLOOR WINDOWS	REQUIRED	% GLASS ON UPPER FLOORS	REQUIRED	% GLASS TOTAL	REQUIRED
		BRICK VENEER	STONE VENEER, SYNTHETIC	STUCCO	WINDOWS - FIRST FLOOR	WINDOWS - UPPER FLOORS	WINDOWS - TOTAL	BURNISHED CMU	FIBER CEMENT, SIDING AND TRIM	TOTAL CLASS 1 MATERIALS											
<b>BUILDING 1 - MIXED USE</b>																					
3/PR4.1	EAST FAÇADE	PRIMARY	2,154 SF	1,178 SF	3,394 SF	1,674 SF	2,134 SF	3,808 SF	459 SF	1,227 SF	10,534 SF	86%	80%	4,068 SF	8,152 SF	12,220 SF	41%	35%	26%	20%	
1/PR4.2	SOUTH 1 FAÇADE	PRIMARY	143 SF	360 SF	571 SF	303 SF	327 SF	630 SF	79 SF	221 SF	1,704 SF	85%	80%	749 SF	1,255 SF	2,004 SF	40%	35%	26%	20%	
2/PR4.1	WEST 1 FAÇADE	PRIMARY	2,175 SF	616 SF	2,358 SF	1,231 SF	1,759 SF	2,990 SF	442 SF	1,646 SF	8,139 SF	80%	80%	3,339 SF	6,888 SF	10,227 SF	37%	35%	26%	20%	
2/PR4.2	SOUTH 2 FAÇADE	PRIMARY	1,457 SF	0 SF	1,309 SF	661 SF	1,056 SF	1,717 SF	161 SF	987 SF	4,483 SF	80%	80%	1,856 SF	3,775 SF	5,631 SF	36%	35%	28%	20%	
3/PR4.2	WEST 2 FAÇADE	SECONDARY	290 SF	0 SF	1,118 SF			316 SF	106 SF	249 SF	1,724 SF	83%	60%	731 SF	1,348 SF	2,079 SF					15%
1/PR4.1	NORTH FAÇADE	SECONDARY	2,572 SF	0 SF	1,794 SF			1,936 SF	252 SF	1,313 SF	6,302 SF	80%	60%	2,606 SF	5,261 SF	7,867 SF					25%
<b>BUILDING 2 - APARTMENTS</b>																					
1/PR4.3	EAST FAÇADE	PRIMARY	2,908 SF	766 SF	2,003 SF			2,654 SF	296 SF	2,129 SF	8,331 SF	77%	70%	3,135 SF	7,621 SF	10,756 SF					25%
3/PR4.3	SOUTH FAÇADE	PRIMARY	712 SF	410 SF	451 SF			506 SF	19 SF	473 SF	2,079 SF	81%	70%	763 SF	1,808 SF	2,571 SF					20%
4/PR4.3	WEST FAÇADE	SECONDARY	2,188 SF	1,166 SF	374 SF			2,507 SF	250 SF	4,248 SF	6,235 SF	58%	50%	3,140 SF	7,593 SF	10,733 SF					23%
2/PR4.3	NORTH FAÇADE	PRIMARY	388 SF	492 SF	651 SF			637 SF	49 SF	334 SF	2,168 SF	85%	70%	776 SF	1,775 SF	2,551 SF					25%
<b>BUILDING 3 - APARTMENTS</b>																					
1/PR4.4	FRONT FAÇADE	PRIMARY	524 SF	225 SF	487 SF			707 SF	0 SF	785 SF	1,943 SF	71%	70%	799 SF	1,929 SF	2,728 SF					26%
4/PR4.4	REAR FAÇADE	PRIMARY	524 SF	225 SF	487 SF			710 SF	0 SF	782 SF	1,946 SF	71%	70%	799 SF	1,929 SF	2,728 SF					26%
2/PR4.4	SIDE 1 FAÇADE	PRIMARY	351 SF	183 SF	406 SF			335 SF	0 SF	386 SF	1,275 SF	77%	70%	505 SF	1,156 SF	1,661 SF					20%
3/PR4.4	SIDE 2 FAÇADE	SECONDARY	278 SF	400 SF	403 SF			253 SF	0 SF	327 SF	1,334 SF	80%	50%	505 SF	1,156 SF	1,661 SF					15%
<b>BUILDING 4 - APARTMENTS</b>																					
1/PR4.5	FRONT FAÇADE	PRIMARY	526 SF	213 SF	477 SF			543 SF	0 SF	746 SF	1,759 SF	70%	70%	723 SF	1,782 SF	2,505 SF					22%
4/PR4.5	REAR FAÇADE	PRIMARY	541 SF	214 SF	477 SF			561 SF	0 SF	712 SF	1,793 SF	72%	70%	723 SF	1,782 SF	2,505 SF					22%
2/PR4.5	SIDE 1 FAÇADE	PRIMARY	351 SF	183 SF	406 SF			335 SF	0 SF	386 SF	1,275 SF	77%	70%	505 SF	1,156 SF	1,661 SF					20%
3/PR4.5	SIDE 2 FAÇADE	SECONDARY	216 SF	244 SF	495 SF			180 SF	0 SF	526 SF	1,135 SF	68%	50%	505 SF	1,156 SF	1,661 SF					11%
<b>BUILDING 9 - APARTMENTS</b>																					
1/PR4.6	FRONT FAÇADE	PRIMARY	540 SF	268 SF	275 SF			556 SF	0 SF	417 SF	1,639 SF	80%	70%	880 SF	1,176 SF	2,056 SF					27%
4/PR4.6	REAR FAÇADE	SECONDARY	540 SF	268 SF	0 SF			543 SF	0 SF	705 SF	1,351 SF	66%	50%	880 SF	1,176 SF	2,056 SF					26%
2/PR4.6	SIDE 1 FAÇADE	SECONDARY	359 SF	179 SF	95 SF			215 SF	0 SF	305 SF	848 SF	74%	50%	505 SF	648 SF	1,153 SF					19%
3/PR4.6	SIDE 2 FAÇADE	SECONDARY	295 SF	287 SF	94 SF			170 SF	0 SF	307 SF	846 SF	73%	50%	505 SF	648 SF	1,153 SF					15%

**EXTERIOR MATERIAL DETAILS**



BRICK TYPE 1  
BELDEN BRICK  
"ADMIRAL FULL RANGE VELOUR"



STUCCO - FIELD COLOR  
OMEGA PRODCUTS  
"BIRCH WHITE"



STUCCO - ACCENT COLOR  
OMEGA PRODCUTS  
"TRUE GRAY"



STUCCO - ACCENT COLOR  
OMEGA PRODCUTS  
"ANTIQUÉ GREEN"



FIBER CEMENT LAP SIDING  
JAMES HARDIE  
"COBBLESTONE"



FIBER CEMENT BOARD &  
BATTEN SIDING  
JAMES HARDIE  
"PEARL GRAY"



FIBER CEMENT TRIM  
JAMES HARDIE  
"ARCTIC WHITE"



STONE VENEER  
PROVIA  
"LIMESTONE ALLEGHENY"



BURNISHED BLOCK  
RAYSTONE  
"ARTIC WHITE"



CAST STONE  
NET CAST STONE  
"BUFF"



ASPHALT SHINGLES  
CERTAINTEED LANDMARK  
"WEATHERED WOOD"



JED-WEN VINYL WINDOW  
"BLACK"



JED-WEN VINYL WINDOW  
"WHITE"

**EXTERIOR ELEVATION KEYNOTES**

1. BRICK VENEER
2. SYNTHETIC STONE VENEER
3. STUCCO
4. FIBER CEMENT SIDING - BOARD AND BATTEN
5. ALUMINUM STOREFRONT WITH CLEAR GLASS
6. FIBER CEMENT TERRAZZO ACCENT BAND
7. VINYL WINDOW WITH CLEAR GLASS & 1X4 FIBER CEMENT TRIM
8. STANDING SEAM METAL CANOPY - 2" DEEP
9. METAL SIDEWALK CANOPY WITH TRIM BRACKS - 24" DEEP
10. BUILT-UP FIBER CEMENT FINISH
11. COMPOSITE FASCIA - TRIM
12. CAST STONE TRIM
13. ALUMINUM GUARDRAIL AT TERRACE
14. STANDING SEAM METAL ROOF
15. HORIZONTAL LAP FIBER CEMENT SIDING
16. SECONDARY WALL SCIENCE
17. SIGNAGE LOCATION
18. ASPHALT DRIVEWAYS
19. HOLLOW METAL DOOR - PAINTED
20. VINYL LOUISER
21. BURNISHED CDMJ BASE
22. STAINED WOOD FASCIA (CEDAR)
23. CANOPY WITH COLUMNS, WRAPPED IN FIBER CEMENT TRIM
24. VINYL SIGNIFICANT DOOR
25. FULLER TILE FINISH WITH ALUMINUM GUARDRAIL
26. FIBER CEMENT PATIO COVER



**3 BUILDING 1 - EAST ELEVATION (STREET)**  
PR4.1 3/32" = 1'-0"



**2 BUILDING 1 - WEST ELEVATION**  
PR4.1 3/32" = 1'-0"

**1 BUILDING 1 - NORTH ELEVATION**  
PR4.1 3/32" = 1'-0"



**EXTERIOR ELEVATION KEYNOTES**

1. BRICK VENEER
2. SYNTHETIC STONE VENEER
3. SYNTHETIC STONE VENEER
4. FIBER CEMENT SIDING, BOARD AND BATTEN
5. ALUMINUM STOREFRONT WITH CLEAR GLASS
6. VINYL WINDOW WITH CLEAR GLASS & 1/4" FIBER CEMENT TRIM
7. FIBER CEMENT TRIM ACCENT BAND
8. STANDING SEAM METAL CANOPY - 24" DEEP
9. METAL C-CHANNEL CANOPY WITH THE BACKS - 24" DEEP
10. BUILT-UP FIBER CEMENT FASCIA
11. COMPOSITE FASCIA TRIM
12. CAST STONE TRIM
13. ALUMINUM GUARDRAIL AT TERRACE
14. STANDING SEAM METAL ROOF
15. HORIZONTAL LAP FIBER CEMENT SIDING
16. CONCRETE WALL, SCORED
17. SKRAGGE LOCATION
18. HANDRAIL FINISHES
19. HOLLOW METAL DOOR - PAINTED
20. VINYL LOUVER
21. BRUSHED STAIN BASE
22. STAINED WOOD PERGOLA (CEILING)
23. CANOPY WITH COLUMN, WRAPPED IN FIBER CEMENT TRIM
24. VINYL SLIDING PATIO DOOR
25. JUBILEE BALCONY WITH ALUMINUM GUARDRAIL
26. FIBER CEMENT PATIO DIVIDER



**3 BUILDING 1 - WEST ELEVATION - 2**  
PR4.2 3/32" = 1'-0"



**2 BUILDING 1 - SOUTH ELEVATION 2**  
PR4.2 3/32" = 1'-0"



**1 BUILDING 1 - SOUTH ELEVATION 1**  
PR4.2 3/32" = 1'-0"

**EXTERIOR ELEVATION KEYNOTES**

1. BRICK VENEER
2. SYNTHETIC STONE VENEER
3. STUCCO
4. FIBER CEMENT SIDING - BOARD AND BATTEN
5. ALUMINUM STONESCREEN WITH CLEAR GLASS
6. VINYL WINDOW WITH CLEAR GLASS & 1/4" FIBER CEMENT TRIM
7. FIBER CEMENT FIBER ACCENT GLAZE
8. STANDING SEAM METAL CANOPY - 24" DEEP
9. METAL CHANNEL CANOPY WITH 1/8" BRICKS - 24" DEEP
10. BULK-UP FIBER CEMENT FASCIA
11. COMPOSITE FASCIA TRIM
12. CAST STONE TRIM
13. ALUMINUM GUARDRAIL AT TERRACE
14. SLIDING SHOWER/AL HOOR
15. HORIZONTAL 1/4" FIBER CEMENT SIDING
16. SYNTHETIC WALL SCORING
17. SKRAGA LOCAL LIN
18. SPHANT SHIMLES
19. HOLLOW METAL DOOR - PAINTED
20. VINYL LOUVER
21. UNFINISHED CMU BASE
22. STAINED WOOD PICKOCKA (CEDAR)
23. CANOPY WITH EXCLINGS WRAPPED IN FIBER CEMENT TRIM
24. VINYL SLEEPING PATIO DOOR
25. JULIETTE BAL CONY WITH ALUMINUM GUARDRAIL
26. FIBER CEMENT PATIO DOOR



**4 BUILDING 2 - WEST ELEVATION**  
PR4.3 3/32" = 1'-0"



**3 BUILDING 2 - SOUTH ELEVATION**  
PR4.3 3/32" = 1'-0"



**2 BUILDING 2 - NORTH ELEVATION**  
PR4.3 3/32" = 1'-0"



**1 BUILDING 2 - EAST ELEVATION**  
PR4.3 3/32" = 1'-0"



**EXTERIOR ELEVATION KEYNOTES**

1. BRICK VENEER
2. SYNTHETIC STONE VENEER
3. STUCCO
4. FIBER CEMENT SIDING - ROUND AND BATTEN
5. ALUMINUM STONEFRONT WITH CLEAR GLASS
6. VINYL WINDOW WITH CLEAR GLASS & TAYLOR CEMENT TRIM
7. BRICK CEMENT TRIM ACCENT BAND
8. STANDING SEAM METAL CANOPY - 24" DEEP
9. METAL COGNAC CANOPY WITH TR BACKS - 24" DEEP
10. BUILT-UP FIBER CEMENT FASCIA
11. COMPOSITE FASCIA TRIM
12. CAST STONE TRIM
13. ALUMINUM GUARDRAIL AT TERRACE
14. STANDING SEAM METAL HOOP
15. HORIZONTAL LAF FIBER CEMENT SIDING
16. DECORATIVE WALL KICKOUT
17. SPONGE LUCKY
18. SPINNET SPINDLES
19. HOLLOW METAL DOOR - PAINTED
20. VINYL COVER
21. BURNISHED OMB BASE
22. STAINED WOOD PRISMA A (CORNICE)
23. CANOPY WITH COLIANS, WRAPPED IN FIBER CEMENT TRIM
24. VINYL SLIDING PATIO DOOR
25. ALUMINUM GUARDRAIL WITH ALUMINUM GUARDRAIL
26. FIBER CEMENT PATIO CHAIRS



**4 BUILDING 3 - REAR ELEVATION**  
PR4.4 1/8" = 1'-0"



**3 BUILDING 3 - SIDE ELEVATION 2**  
PR4.4 1/8" = 1'-0"



**2 BUILDING 3 - SIDE ELEVATION 1**  
PR4.4 1/8" = 1'-0"



**1 BUILDING 3 - FRONT ELEVATION**  
PR4.4 1/8" = 1'-0"

**EXTERIOR ELEVATION KEYNOTES**

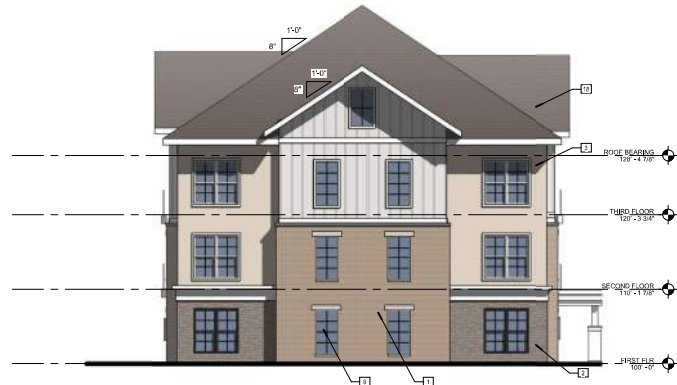
1. BRICK VENEER
2. SYNTHETIC STONE VENEER
3. STUCCO
4. FIBER CEMENT SIDING - BOARD AND BATTEN
5. ALUMINUM STOREFRONT WITH CLEAR GLASS
6. VINYL WINDOW WITH CLEAR GLASS & 1/4" FIBER CEMENT TRIM
7. FIBER CEMENT TRIM - ACENT BAND
8. STANDING SEAM METAL CANOPY - 24" DEEP
9. METAL CHANNEL CANOPY WITH THE BACKS - 24" DEEP
10. BUILT-UP FIBER CEMENT FASCIA
11. COMPRESS CASUALTY TRIM
12. CAST STONE TRIM
13. ALUMINUM GUARDRAIL AT TERRACE
14. STANDING SEAM METAL ROOF
15. HORIZONTAL LAP FIBER CEMENT SIDING
16. DECORATIVE WALL SCORING
17. BRIDGE LOCATION
18. ASPHALT SHINGLES
19. VULCANIZING MAT - COOK + PAINTED
20. VINYL LOUVER
21. STAINED FIBER CEMENT BASE
22. STAINED FIBER CEMENT CASING
23. CANOPY WITH COLUMNS WRAPPED IN FIBER CEMENT TRIM
24. VINYL SIDING PATIO DOOR
25. Juliette BALCONY WITH ALUMINUM GUARDRAIL
26. FIBER CEMENT PATIO COVER



**4 BUILDING 4 - REAR ELEVATION**  
PR4.5 1/8" = 1'-0"



**3 BUILDING 4 - SIDE ELEVATION - 2**  
PR4.5 1/8" = 1'-0"



**2 BUILDING 4 - SIDE ELEVATION-1**  
PR4.5 1/8" = 1'-0"



**1 BUILDING 4 - FRONT ELEVATION**  
PR4.5 1/8" = 1'-0"

**EXTERIOR ELEVATION KEYNOTES**

1. BRICK VENEER
2. SYNTHETIC STONE VENEER
3. STUCCO
4. FIBER CEMENT SIDING - BOARD AND BATTEN
5. ALUMINUM EXTENSION WITH CLEAR GLASS
6. VINYL WINDOWS WITH CLEAR GLASS & 1 1/4" FIBER CEMENT TRIM
7. FIBER CEMENT TRIM ACCENT SASH
8. STANDING SEAM METAL CANOPY - 2 1/4" DEEP
9. METAL COLUMNS CANOPY WITH RE BRACKS - 2 1/4" DEEP
10. BUILT-UP FIBER CEMENT FASCIA
11. COMPOSITE FACIA TRIM
12. CAST STONE TRIM
13. ALUMINUM GUARDRAIL AT TERRACE
14. STANDING SEAM METAL ROOF
15. HORIZONTAL LAY FIBER CEMENT SIDING
16. DECORATIVE WALL BOARDS
17. SPANISH SQUARED
18. ASPHALT SHINGLES
19. HOLLOW METAL DOOR - PAINTED
20. VINYL LOUVER
21. BURNISHED CUI BASE
22. STAINED WOOD PORCHA (CEDAR)
23. CANOPY WITH COLUMNS, WRAPPED IN FIBER CEMENT TRIM
24. VINYL SLIDING PATIO DOOR
25. ALUMINUM BALCONY WITH ALUMINUM GUARDRAIL
26. FIBER CEMENT PATIO DOOR



**4 BUILDING 9 - REAR ELEVATION**  
PR4.6 1/8" = 1'-0"



**3 BUILDING 9 - SIDE ELEVATION 2**  
PR4.6 1/8" = 1'-0"



**2 BUILDING 9 - SIDE ELEVATION 1**  
PR4.6 1/8" = 1'-0"



**1 BUILDING 9 - FRONT ELEVATION**  
PR4.6 1/8" = 1'-0"



BRICK: "ADMIRAL"  
 STONE: "LIMESTONE ALLEGHENY"  
 STUCCO: "ANTIQUÉ GREEN"

**BUILDING 9 - FRONT ELEVATION - COLOR SCHEME 3**

1/8" = 1'-0"



BRICK: "TUMBLEWEED"  
 STONE: "LIMESTONE ALLEGHENY"  
 STUCCO: "TRUE GRAY"

**BUILDING 9 - FRONT ELEVATION - COLOR SCHEME 2**

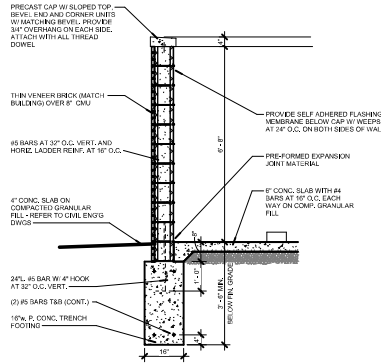
1/8" = 1'-0"



BRICK: "ADMIRAL"  
 STONE: "LIMESTONE ALLEGHENY"  
 STUCCO: "BIRCH WHITE"

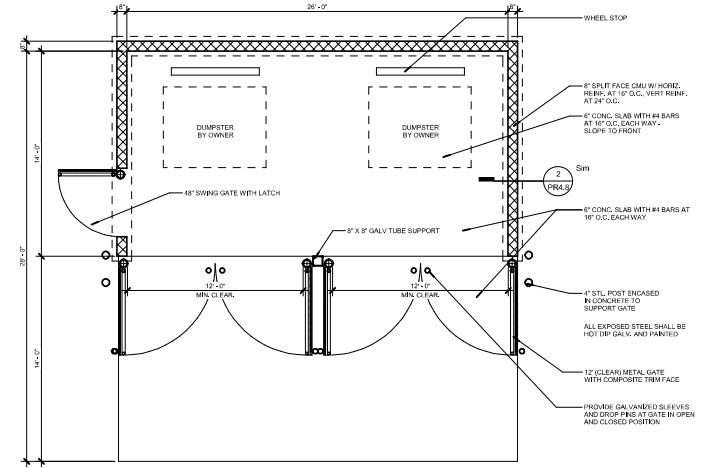
**BUILDING 9 - FRONT ELEVATION - COLOR SCHEME 1**

1/8" = 1'-0"



**CMU ENCLOSURE SECTION**

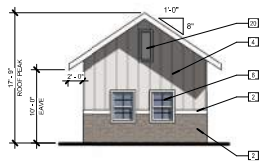
1/2" = 1'-0"



**DUMPSTER ENCLOSURE DETAIL**

1/2" = 1'-0"

**ALSO REFER TO CITY OF OLATHE TRASH ENCLOSURE DETAILS FOR ADDITIONAL REQUIREMENTS**

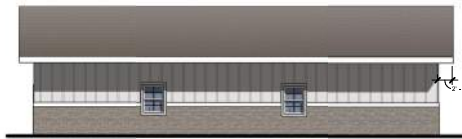


**5 MAINTENANCE BLDG - TYP SIDE**

PR4.B 1/8" = 1'-0"

**EXTERIOR ELEVATION KEYNOTES**

1. BRICK VENEER
2. SYNTHETIC STONE VENEER
3. STUCCO
4. FIBER CEMENT SIDING - BOARD AND BATTEN
5. ALUMINUM STOREFRONT WITH CLEAR GLASS
6. VINYL WINDOW WITH CLEAR GLASS & 1/4" FIBER CEMENT TRIM
7. FIBER CEMENT TRIM ACCENT BAND
8. STANDING SEAM METAL CANOPY - 24" DEEP
9. METAL CHANNEL CANOPY WITH 1" BACKS - 24" DEEP
10. BULK LAP FIBER CEMENT FASCIA
11. COMPOSITE FASCIA / TRIM
12. GATE STONE TRIM
13. ALUMINUM GUARDRAIL AT TERRACE
14. STANDING SEAM METAL ROOF
15. HORIZONTAL LAP FIBER CEMENT SIDING
16. DIAGONAL WALL SPOONCE
17. STORAGE LOCATION
18. ASPHALT SHINGLES
19. YELLOW METAL DOOR - PAINTED
20. VINYL LOUVER
21. STAIRBUSH ON 1" BASE
22. STAINED WOOD PERGOLA (CS/DARK)
23. CANOPY WITH COLUMN WRAPPED IN FIBER CEMENT TRIM
24. VINYL SLIDING PATIO DOOR
25. SUBTILE BALCONY WITH ALUMINUM GUARDRAIL
26. FIBER CEMENT PATIO DAMPER



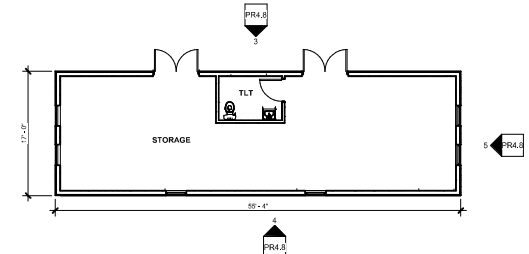
**4 MAINTENANCE BLDG - REAR**

PR4.B 1/8" = 1'-0"



**3 MAINTENANCE BLDG - FRONT**

PR4.B 1/8" = 1'-0"



**6 FLOOR PLAN - MAINT. BLDG**

PR4.B 1/8" = 1'-0"





BIRD'S EYE VIEW



VIEW FROM MER-LEN ROAD





PLAZA SPACE AT BUILDING 1



VIEW AT ENTRY BOULEVARD TOWARD BUILDING 2





VIEW AT ROOF TOP / PLAZA AT BUILDING 2





VIEW DETENTION POND AND AMENITIES AT BUILDING 2



VIEW DETENTION POND AND AMENITIES AT BUILDING 2





VIEW AT PLAYGROUND AND SHARED BALCONIES