



1 ENTRY MONUMENT
SCALE: 3/8" = 1'

2 DIRECTIONAL
SCALE: 3/8" = 1'

ELECTRICAL

Dedicated Circuit -
277 VAC / 20 Amp

REVISIONS

10/16/2024

STATUS

Production Ready



133 West Park Drive Birmingham, AL 35211
1,205,940,7180 1,800,743,7191
1,205,940,7190 - fax
www.fravert.com

Heartland Coka Cola Olathe KD
DESIGN REF #: 24022000

Freestanding Site Signs
EXTERIOR

DESIGNER: HRC
MANAGER: ALISON VANN

PAGE: 4

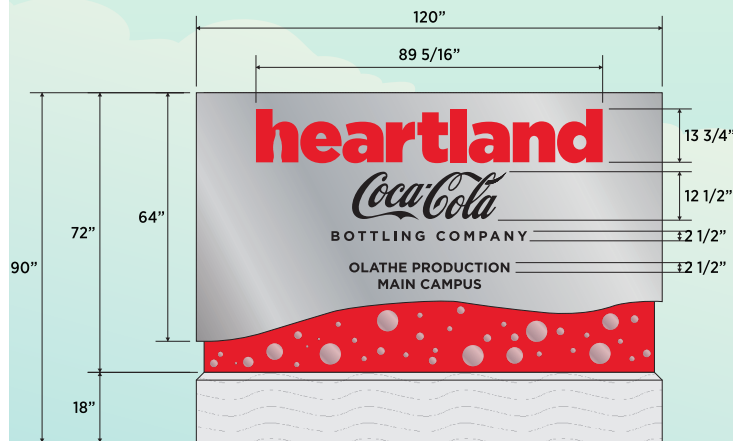


4 TOP VIEW
SCALE: 3/8" = 1'

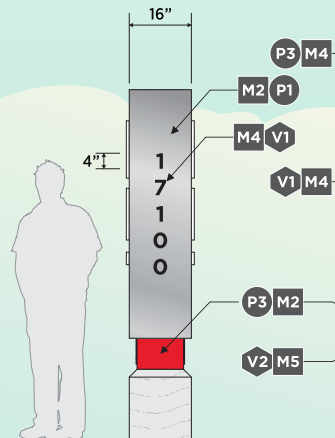
QTY: 1

LANDSCAPING WILL BE PROVIDED (BY OTHERS) IN AN AREA OF AT LEAST 2.5 FEET AROUND THE BASE OF THE SIGN.

CONCRETE BASE IS BY OTHERS



1 FRONT VIEW
SCALE: 3/8" = 1'



2 SIDE VIEW
SCALE: 3/8" = 1'



3 BACK VIEW
SCALE: 3/8" = 1'

OVERVIEW

Fabricated monument sign with painted cabinets, push-thru acrylic lettering and bubble artwork, and a poured concrete base.

Bottom of monument exterior cabinet to reference Coke bottle shape.

MATERIALS / FINISHES

- M1 2" Sq. Aluminum Tubing
- M2 .125" Aluminum Panel
- M3 2" Sq. Aluminum Angle
- M4 1" White Push-Thru Acrylic
- M5 .5" White Push-Thru Acrylic
- M6 White LEDs
- M7 4"x4"x3/16" Steel Tubing
- M8 .5" Steel Plate
- P1 Paint: Metallic Silver
- P2 Paint: Black
- P3 Paint: AKZO 408A5 Coke Red
- V1 Vinyl: Black
- V2 Vinyl: Metallic Silver

INSTALLATION

Mount signage to steel tubing secured to concrete base (by others) via through bolts and 2" aluminum angle welded to frame.

ELECTRICAL

Dedicated Circuit - 277 VAC / 20 Amp

REVISIONS

10/16/2024

STATUS

Production Ready



133 West Park Drive Birmingham, AL 35211
1,205,940,7180 1,800,743,7191
1,205,940,7190 - fax
www.fravert.com

Heartland Coka Cola Olathe KD

DESIGN REF #: 24022000

Entry Monument

EXTERIOR

DESIGNER:

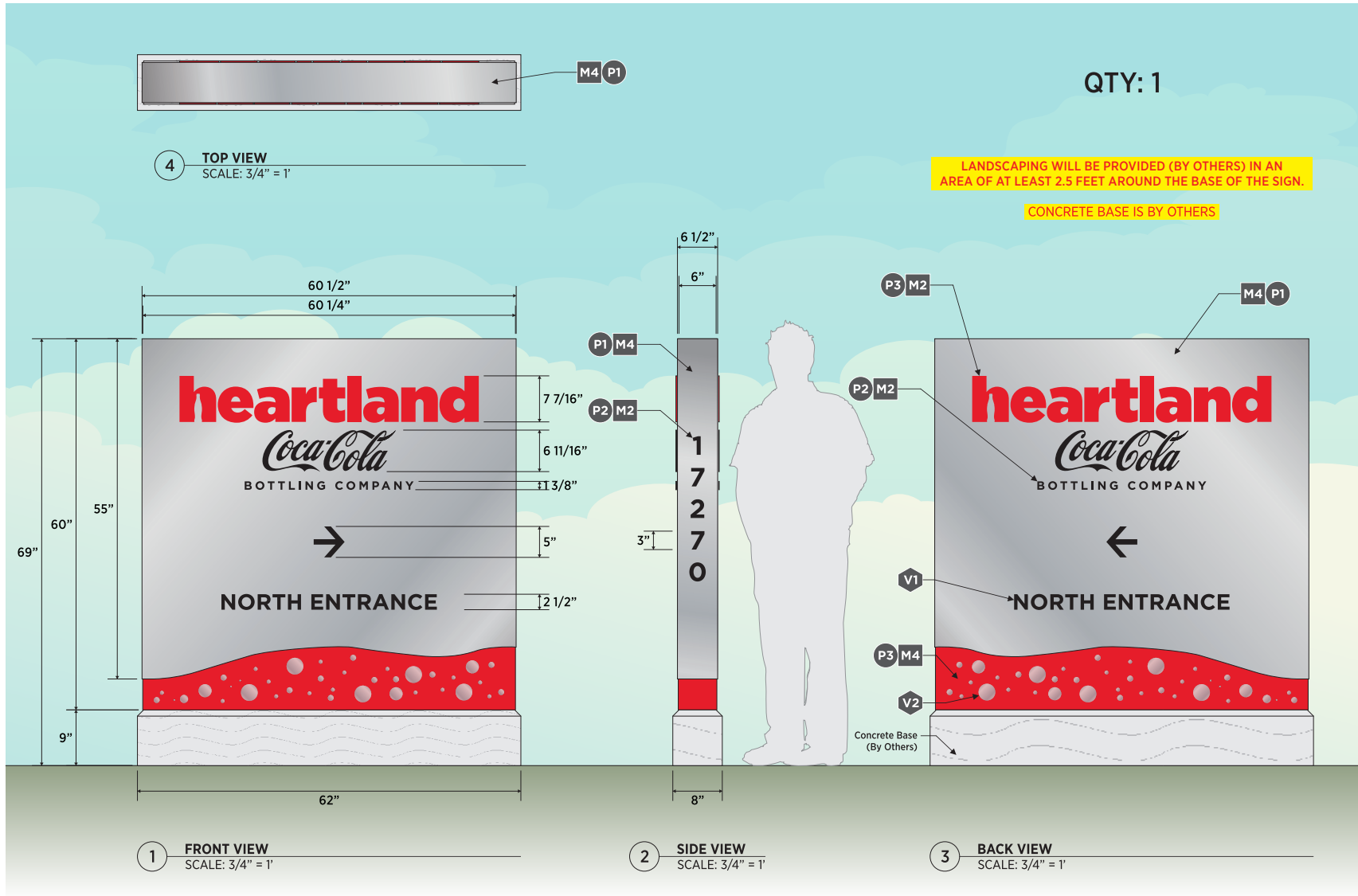
HRC

MANAGER:

ALISON VANN

PAGE:

5



OVERVIEW

Fabricated directional sign with painted cabinets, plate letter logo, and vinyl directional graphics.

Bottom of monument to reference Coke bottle shape.

MATERIALS / FINISHES

- M1** 2" Sq. Aluminum Tubing
- M2** .25" Aluminum Plate
- M3** 1" Aluminum Plate
- M4** .125" Aluminum Panel
- P1** Paint: Metallic Silver
- P2** Paint: Black
- P3** Paint: AKZO 408A5 Coke Red
- V1** Vinyl: Black
- V2** Vinyl: Metallic Silver

INSTALLATION

Mount signage to concrete base (by others) via 5/8" ø screw anchors through 1" mounting plate with minimum 5 1/2" embedment.

REVISIONS

10/16/2024

STATUS

Production Ready



133 West Park Drive Birmingham, AL 35211
1,205,940,7180 1,800,743,7191
1,205,940,7190 - fax
www.fravert.com

Heartland Coca Cola Olathe KD

DESIGN REF #: 24022000

Non-illuminated Directional

EXTERIOR

DESIGNER:

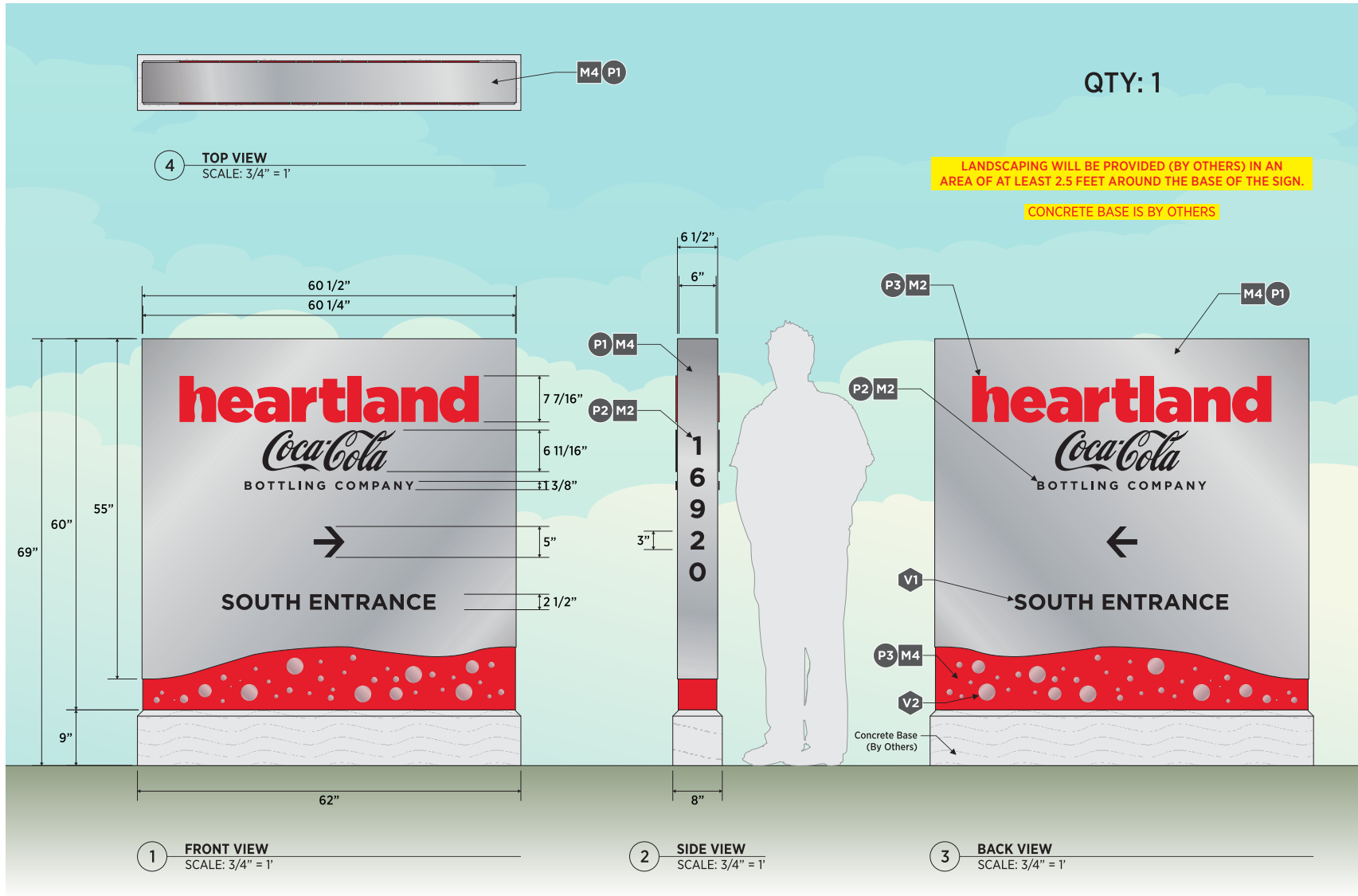
HRC

MANAGER:

ALISON
VANN

PAGE:

8



OVERVIEW

Fabricated directional sign with painted cabinets, plate letter logo, and vinyl directional graphics.

Bottom of monument to reference Coke bottle shape.

MATERIALS / FINISHES

- M1** 2" Sq. Aluminum Tubing
- M2** .25" Aluminum Plate
- M3** 1" Aluminum Plate
- M4** .125" Aluminum Panel
- P1** Paint: Metallic Silver
- P2** Paint: Black
- P3** Paint: AKZO 408A5 Coke Red
- V1** Vinyl: Black
- V2** Vinyl: Metallic Silver

INSTALLATION

Mount signage to concrete base (by others) via 5/8" \varnothing screw anchors through 1" mounting plate with minimum 5 1/2" embedment.

REVISIONS

 10/16/2024

STATUS

 Production Ready



133 West Park Drive Birmingham, AL 35211
1,205,940,7180 1,800,743,7191
1,205,940,7190 - fax
www.fravert.com

Heartland Coca Cola Olathe KD

DESIGN REF #: 24022000

Non-illuminated Directional

EXTERIOR

DESIGNER:

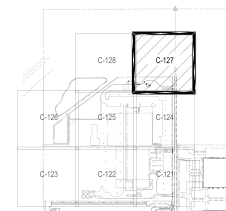
HRC

MANAGER:

ALISON
VANN

PAGE:

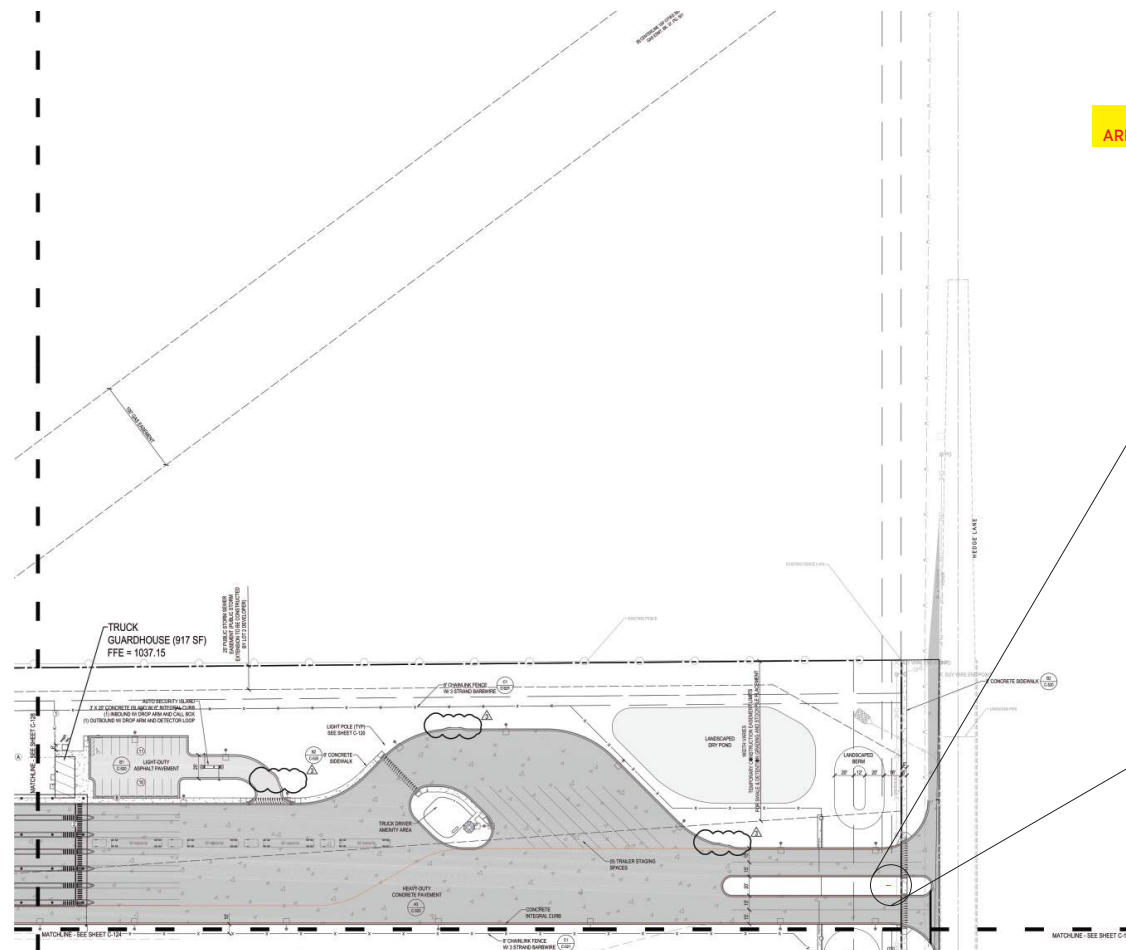
9



SIGNAGE KEY

- Main Entry Monument
- Directional
- Building Letters

LANDSCAPING WILL BE PROVIDED (BY OTHERS) IN AN AREA OF AT LEAST 2.5 FEET AROUND THE BASE OF THE SIGN.



1 PARTIAL SITE PLAN
SCALE: 1/128" = 1'-0"

REVISIONS

10/16/2024

STATUS

Production Ready



133 West Park Drive Birmingham, AL 35211
1,205,940,7180 1,800,743,7191
1,205,940,7190 - fax
www.fravert.com

Heartland Coca Cola Olathe KD

DESIGN REF #: 24022000

Set Back Requirements

EXTERIOR

DESIGNER:

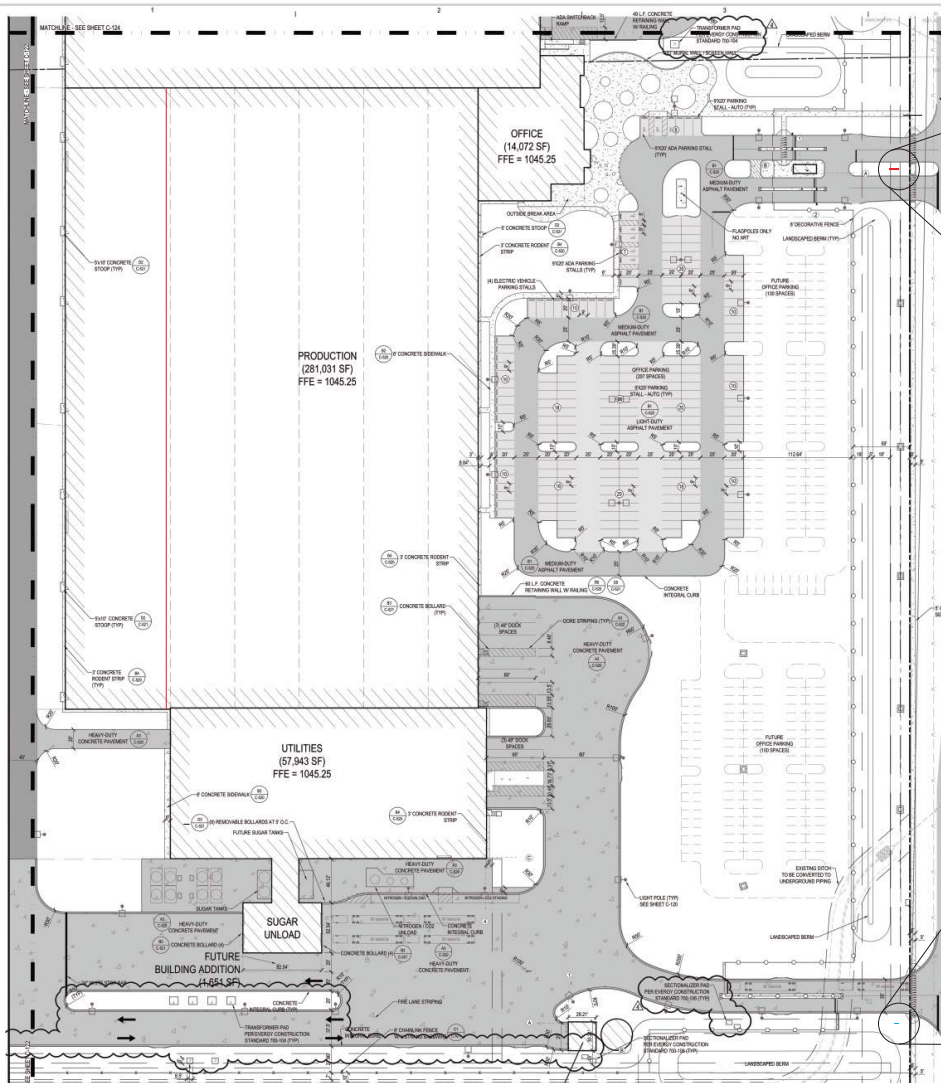
HRC

MANAGER:

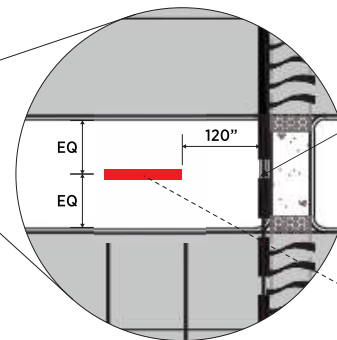
ALISON VANN

PAGE:

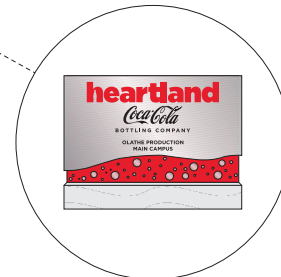
12



1 PARTIAL SITE PLAN
SCALE: 1/128" = 1'-0"

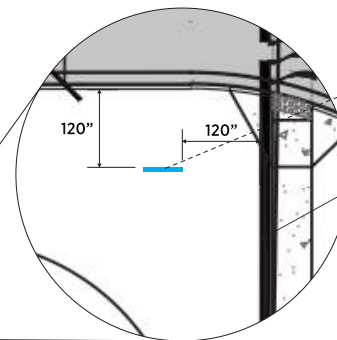


PROPERTY LINE

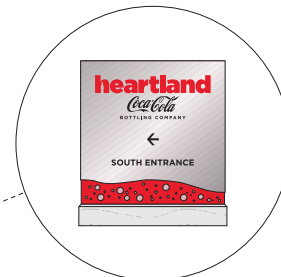


SIGNAGE KEY

- Main Entry Monument
- Directional
- Building Letters



PROPERTY LINE



REVISIONS

10/16/2024

STATUS

■ Production Ready

LANDSCAPING WILL BE PROVIDED (BY OTHERS) IN AN AREA OF AT LEAST 2.5 FEET AROUND THE BASE OF THE SIGN.



133 West Park Drive Birmingham, AL 35211
1,205,940,7180 1,800,743,7191
1,205,940,7190 - fax
www.fravert.com

Heartland Coca Cola Olathe KD

DESIGN REF #: 24022000

Set Back Requirements

EXTERIOR

DESIGNER:

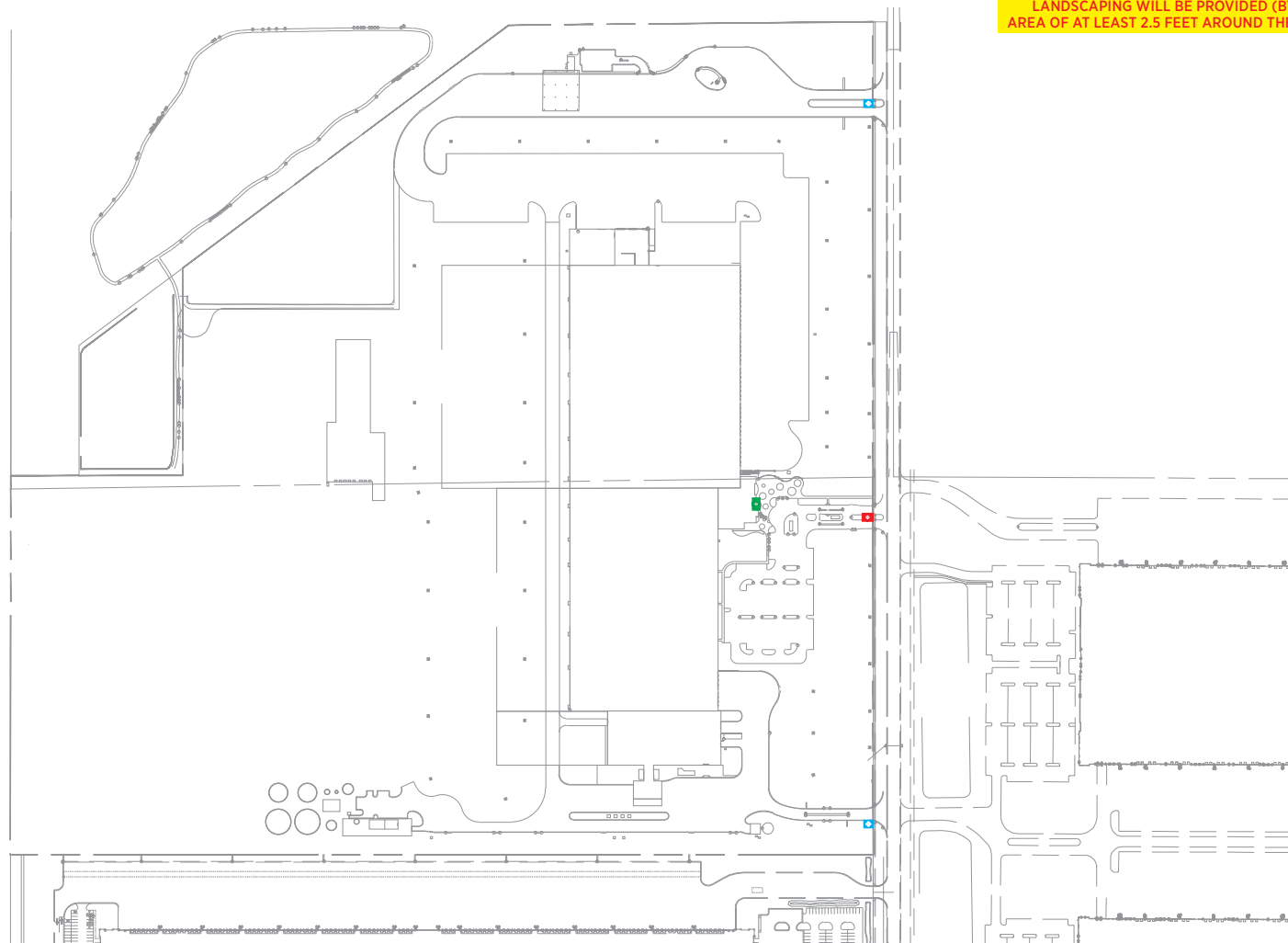
HRC

MANAGER:

ALISON VANN

PAGE:

13



LANDSCAPING WILL BE PROVIDED (BY OTHERS) IN AN AREA OF AT LEAST 2.5 FEET AROUND THE BASE OF THE SIGN.

SIGNAGE KEY

- Main Entry Monument
- Directional
- Building Letters

REVISIONS

△ 10/16/2024

STATUS

■ Production Ready

1 **OVERALL SITE PLAN**
SCALE: 1 = 5000



133 West Park Drive Birmingham, AL 35211
1,205,940,7180 1,800,743,7191
1,205,940,7190 - fax
www.fravert.com

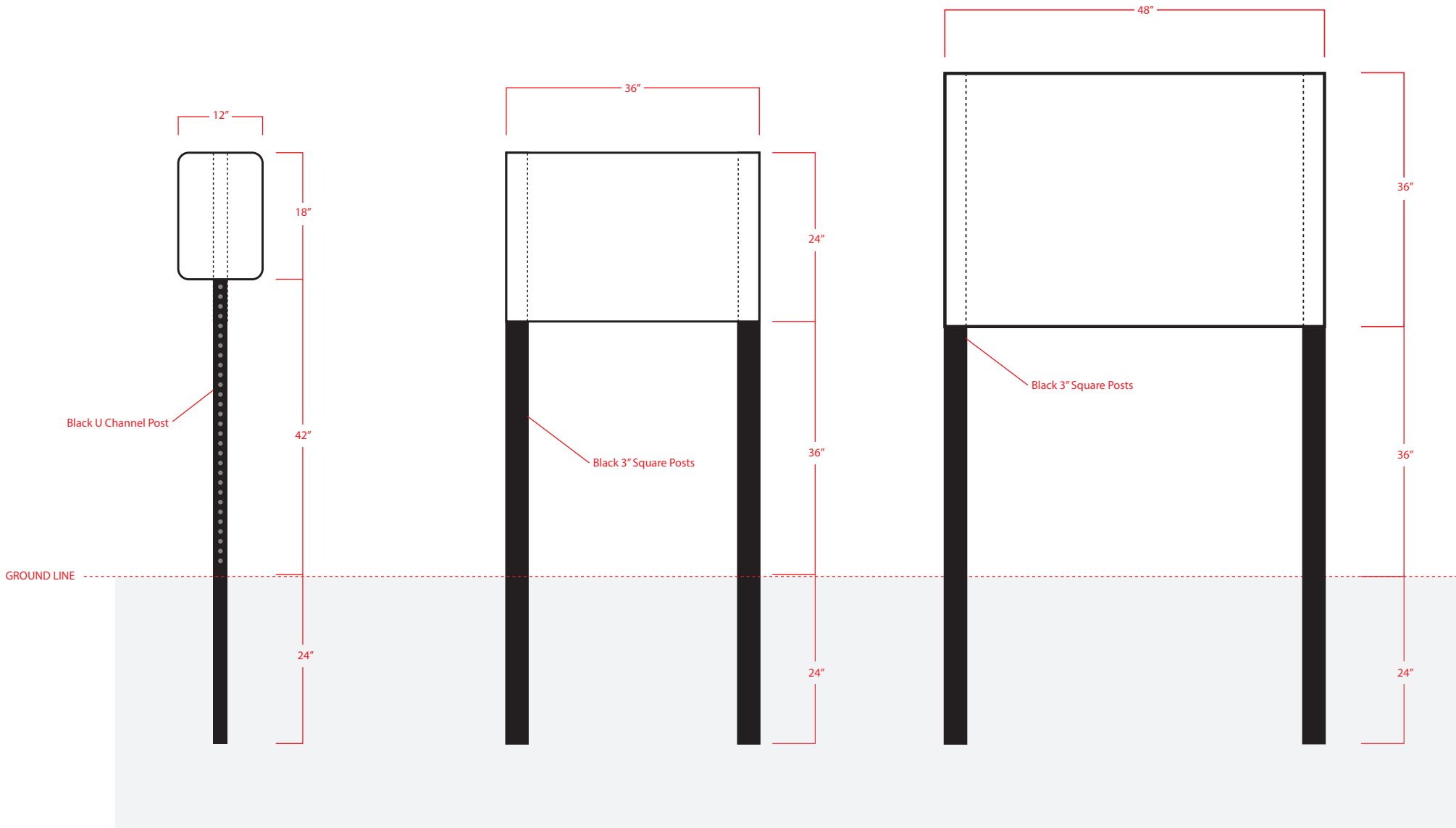
Heartland Coca Cola Olathe KD
DESIGN REF #: 24022000

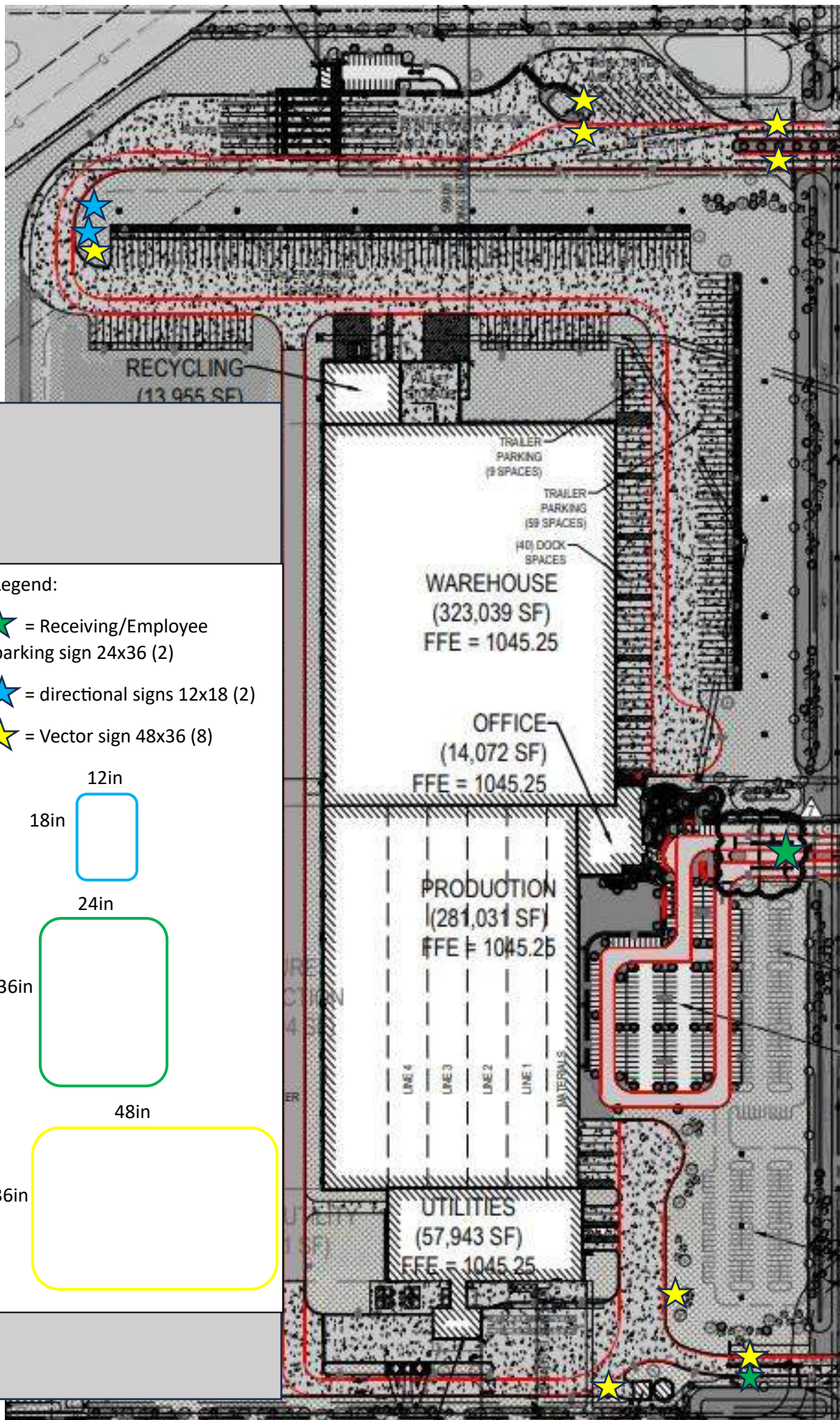
Site Plan
EXTERIOR

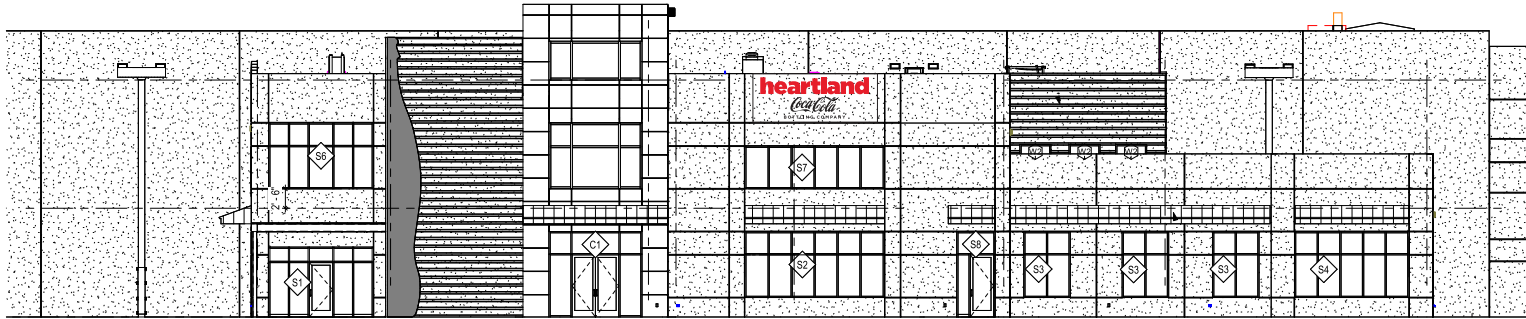
DESIGNER:
HRC

MANAGER:
ALISON
VANN

PAGE:
13



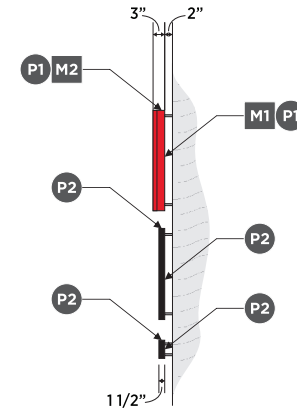




3 ENLARGED EAST OFFICE BUILDING ELEVATION
SCALE: 1/16" = 1'



1 FRONT VIEW
SCALE: 3/8" = 1'



2 SIDE VIEW
SCALE: 3/8" = 1'

OVERVIEW

HEARTLAND:

3" deep face-lit channel letters mounted on 2" standoff hardware.

COCA-COLA BOTTLING COMPANY:

1.5" deep face-lit Colite letters mounted on 2" standoff hardware.

MATERIALS / FINISHES

- M1 .125" Aluminum Panel
- M2 .063" Aluminum Panel
- M3 .125" White Lexan Panel
- M4 .5" Fabricated Retainers
- M5 White LEDs
- M6 1.5" Deep Reverse-Lit Colite Letters
- P1 Paint: AKZO 408A5 Coke Red
- P2 Paint: Black
- V1 Vinyl: 3M 3630-33
- V2 Vinyl: Black Translucent

INSTALLATION

Mount to exterior wall with mechanical anchors and 2" standoff hardware. Silicon all penetrations for water tightness.

ELECTRICAL

Dedicated Circuit - 277 VAC / 20 Amp

REVISIONS

10/16/2024

STATUS

Production Ready



133 West Park Drive Birmingham, AL 35211
1.205.940.7180 1.800.743.7191
1.205.940.7190 - fax
www.fravert.com

Heartland Coca Cola Olathe KD

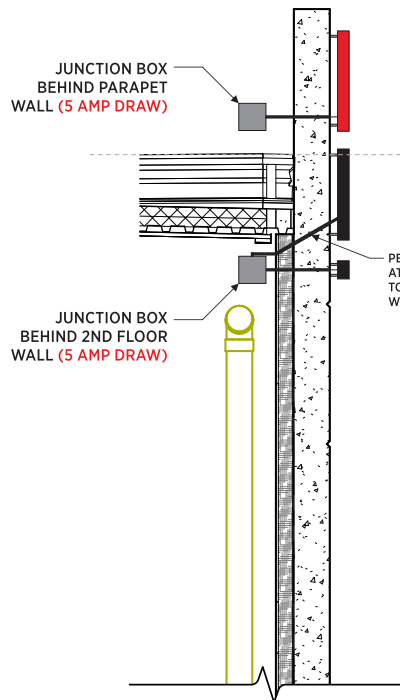
DESIGN REF #: 24022000

Building Letters
EXTERIOR

DESIGNER:
HRC

MANAGER:
ALISON
VANN

PAGE:
1



1 SECTION VIEW
SCALE: 3/8" = 1'



2 PARTIAL ELEVATION
SCALE: 3/8" = 1'

ELECTRICAL

Dedicated Circuit -
277 VAC / 20 Amp

REVISIONS

10/16/2024

STATUS

Production Ready



133 West Park Drive Birmingham, AL 35211
1,205,940,7180 1,800,743,7191
1,205,940,7190 - fax
www.fravert.com

Heartland Coca Cola Olathe KD

DESIGN REF #: 24022000

Building Letters

EXTERIOR

DESIGNER:

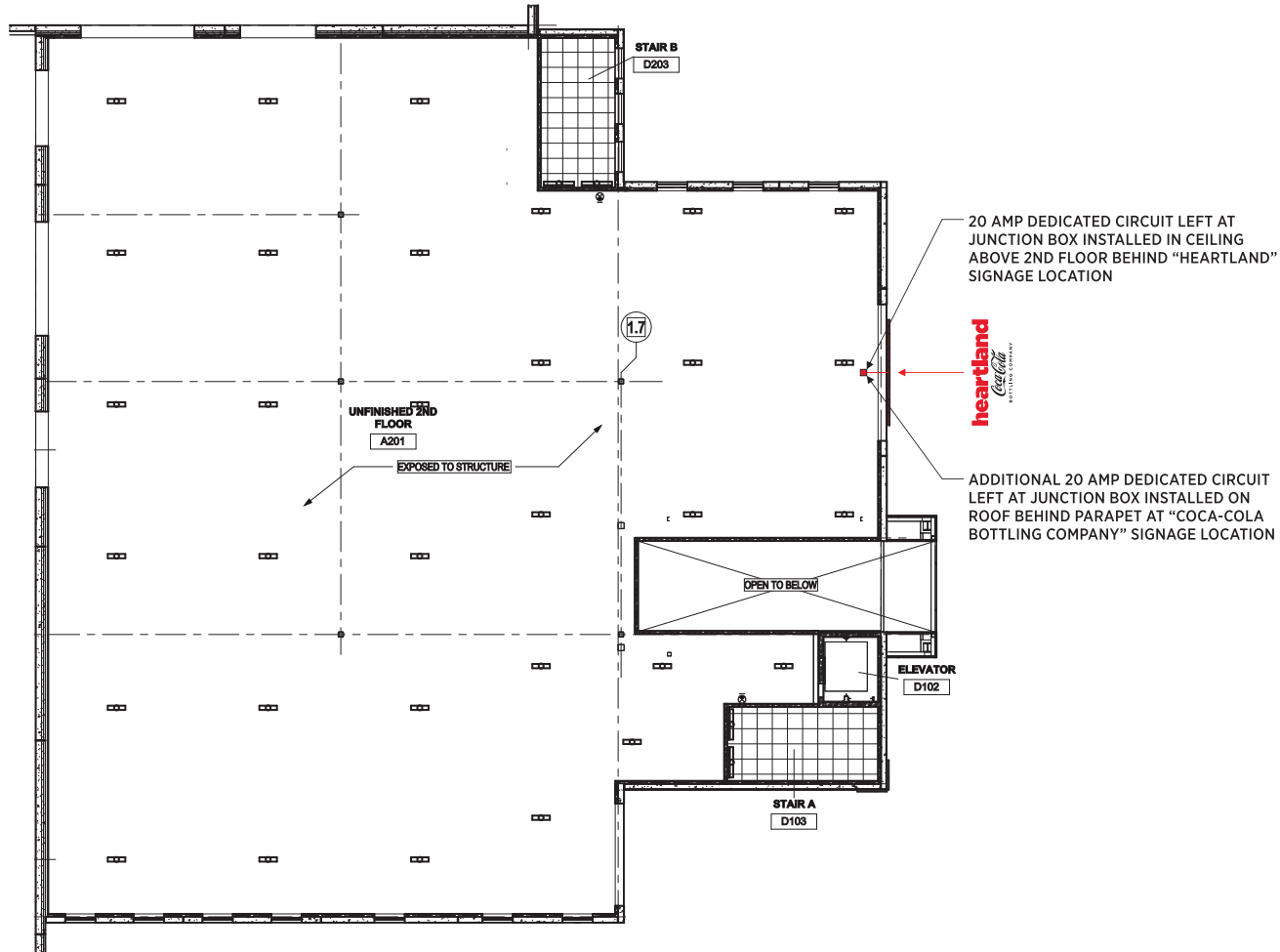
HRC

MANAGER:

ALISON
VANN

PAGE:

2



1 **2ND FLOOR RCP**
SCALE: 1/16" = 1'-0"

ELECTRICAL

Dedicated Circuit -
277 VAC / 20 Amp

REVISIONS

△ 10/16/2024

STATUS

■ Production Ready



133 West Park Drive Birmingham, AL 35211
1,205,940,7180 1,800,743,7191
1,205,940,7190 - fax
www.fravert.com

Heartland Coca Cola Olathe KD

DESIGN REF #: 24022000

Building Letters

EXTERIOR

DESIGNER:

HRC

MANAGER:

ALISON
VANN

PAGE:

3