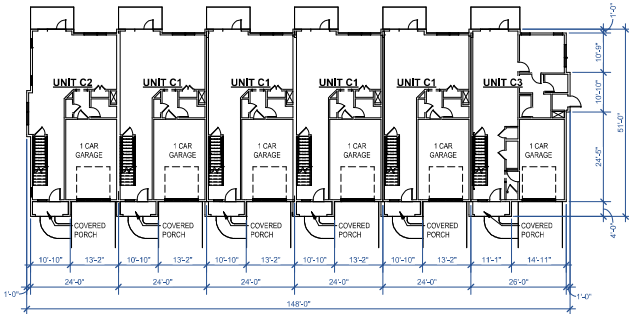


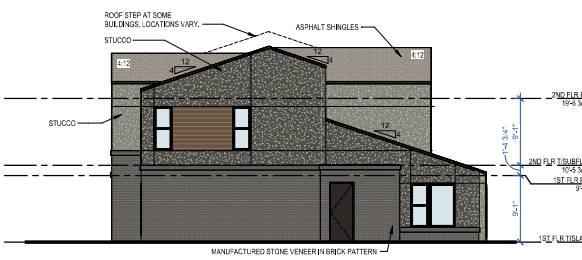
6-UNIT TOWNHOMES - 2ND FLOOR BUILDING PLAN
1/8" = 1'-0"



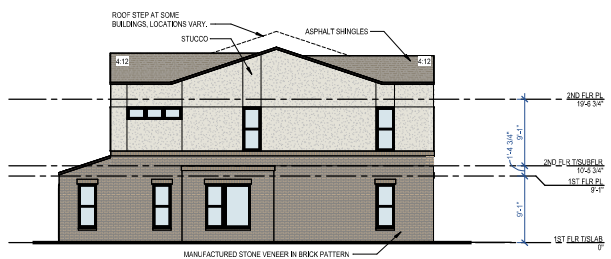
6-UNIT TOWNHOMES - 1ST FLOOR BUILDING PLAN
1/8" = 1'-0"

STUCCO MOUNTAIN ROAD - SW 1015 OR SIMILAR	MANUFACTURED STONE VENEER BRICK PATTERN (TAN BLEND) PROVA OR SIMILAR
STUCCO DREDAVIM-FE - SW 7638 OR SIMILAR	MANUFACTURED STONE VENEER BRICK PATTERN (CHARCOAL BLEND) PROVA OR SIMILAR
STUCCO SKIN LINE STEEL - SW 1015 OR SIMILAR	FIBER CEMENT LAP SIDING WOODSTONE ASPEN RIDGE OR SIMILAR
STUCCO URBANE BRONZE - SW 7048 OR SIMILAR	FIBER CEMENT LAP SIDING URBANE BRONZE - SW 7048 OR SIMILAR
ASPHALT SHINGLES TAMKO HERITAGE WEATHERED WOOD OR SIMILAR	FIBER CEMENT LAP SIDING SHYLINE STEEL - SW 1015 OR SIMILAR

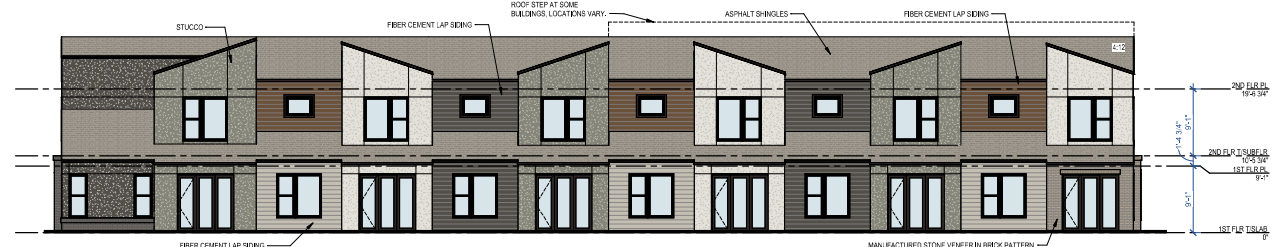
MATERIAL LEGEND



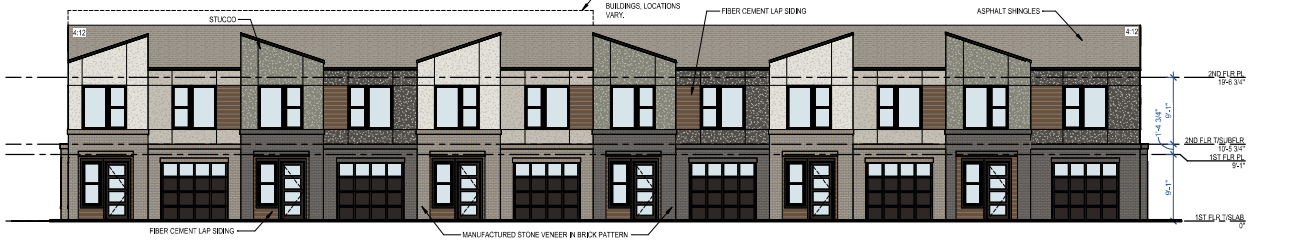
6-UNIT TOWNHOMES - RIGHT ELEVATION
1/8" = 1'-0"
PRIMARY FACADE AT BUILDINGS 3 & 9
SECONDARY FACADE AT ALL OTHER BUILDINGS



6-UNIT TOWNHOMES - LEFT ELEVATION
1/8" = 1'-0"
PRIMARY FACADE AT BUILDINGS 3 & 6
SECONDARY FACADE AT ALL OTHER BUILDINGS



6-UNIT TOWNHOMES - REAR ELEVATION
1/8" = 1'-0"
SECONDARY FACADE AT ALL BUILDINGS



6-UNIT TOWNHOMES - FRONT ELEVATION
1/8" = 1'-0"
PRIMARY FACADE AT ALL BUILDINGS

FRONT ELEVATION
PRIMARY FACADE AT ALL BUILDINGS

CLASS 1 (MIN. 70%)	MATERIAL	AREAS (SF.)	PERCENT
CLASS 1 (MIN. 70%)	GLAZING	748.75	22.95%
	MANUFACTURED STONE VENEER	843.56	25.85%
	STUCCO	970.97	29.26%
TOTAL			78.56%

CLASS 3	MATERIAL	AREAS (SF.)	PERCENT
CLASS 3	METAL ROOF	354.34	10.97%
	FIBER CEMENT LAP SIDING & TRIM	343.37	10.52%
TOTAL			21.44%

LEFT ELEVATION
PRIMARY FACADE AT BUILDINGS 3 & 6
SECONDARY FACADE AT ALL OTHER BUILDINGS

CLASS 1 (MIN. 70% AT PRIMARY FACADE, MIN. 50% AT SECONDARY FACADE)	MATERIAL	AREAS (SF.)	PERCENT
CLASS 1 (MIN. 70% AT PRIMARY FACADE, MIN. 50% AT SECONDARY FACADE)	GLAZING	123.16	11.13%
	MANUFACTURED STONE VENEER	542.75	49.06%
	STUCCO	440.39	39.81%
TOTAL			100.00%

RIGHT ELEVATION
PRIMARY FACADE AT BUILDINGS 3 & 9
SECONDARY FACADE AT ALL OTHER BUILDINGS

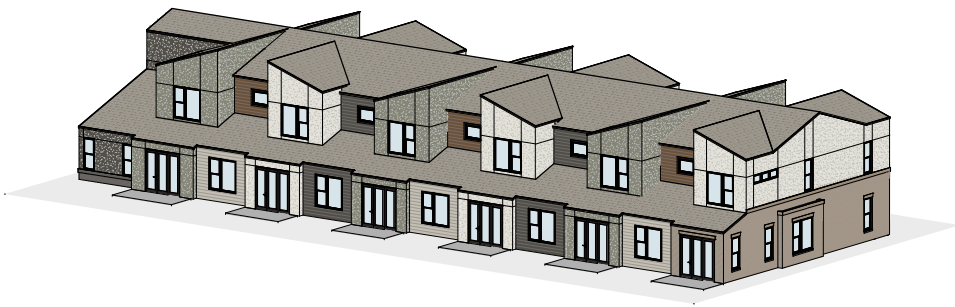
CLASS 1 (MIN. 70% AT PRIMARY FACADE, MIN. 50% AT SECONDARY FACADE)	MATERIAL	AREAS (SF.)	PERCENT
CLASS 1 (MIN. 70% AT PRIMARY FACADE, MIN. 50% AT SECONDARY FACADE)	GLAZING	66.73	6.21%
	MANUFACTURED STONE VENEER	414.16	38.53%
	STUCCO	817.58	48.15%
TOTAL			92.89%

CLASS 3	MATERIAL	AREAS (SF.)	PERCENT
CLASS 3	METAL ROOF	27.22	2.53%
	FIBER CEMENT LAP SIDING & TRIM	49.25	4.58%
TOTAL			7.11%

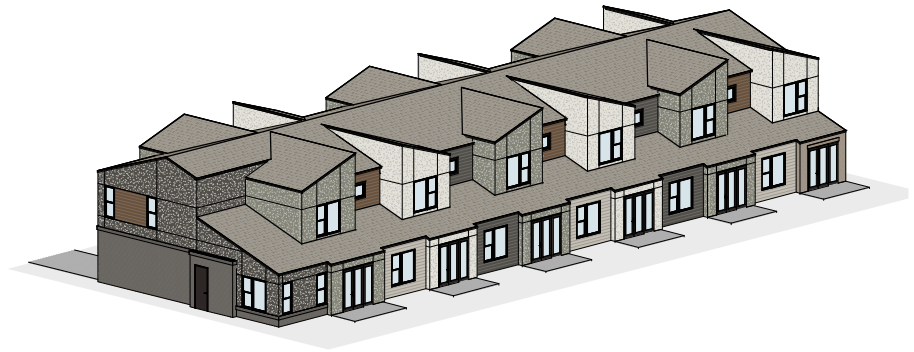
REAR ELEVATION
SECONDARY FACADE AT ALL BUILDINGS

CLASS 1 (MIN. 50%)	MATERIAL	AREAS (SF.)	PERCENT
CLASS 1 (MIN. 50%)	GLAZING	845.65	29.61%
	MANUFACTURED STONE VENEER	97.71	3.42%
	STUCCO	1113.73	39.00%
TOTAL			72.03%

CLASS 3	MATERIAL	AREAS (SF.)	PERCENT
CLASS 3	FIBER CEMENT LAP SIDING & TRIM	798.71	27.97%
TOTAL			27.97%



4 6-UNIT TOWNHOMES - PERSPECTIVE
NTS



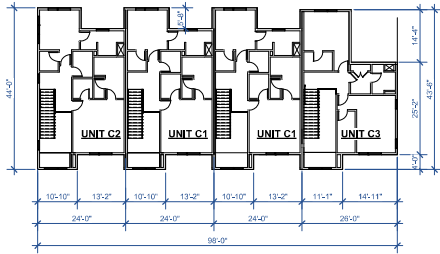
2 6-UNIT TOWNHOMES - PERSPECTIVE
NTS



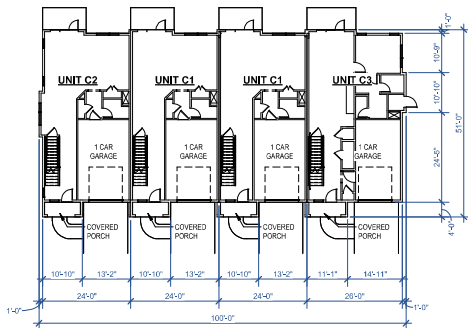
3 6-UNIT TOWNHOMES - PERSPECTIVE
NTS



1 6-UNIT TOWNHOMES - PERSPECTIVE
NTS



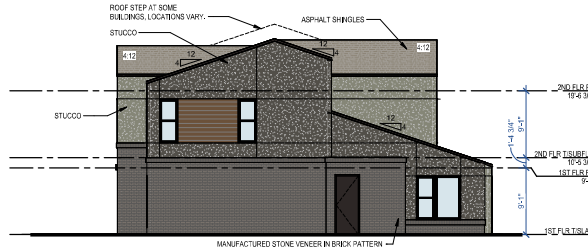
6 4-UNIT TOWNHOMES - 2ND FLOOR BUILDING PLAN
1/16" = 1'-0"



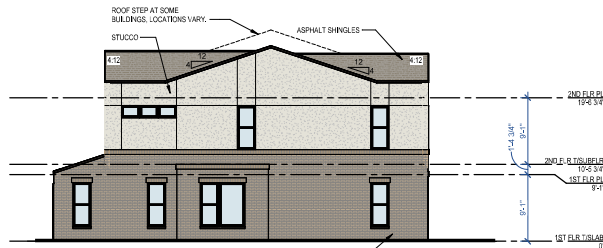
5 4-UNIT TOWNHOMES - 1ST FLOOR BUILDING PLAN
1/16" = 1'-0"

MATERIAL LEGEND	
STUCCO MOUNTAIN ROAD - SW 1015 OR SIMILAR	MANUFACTURED STONE VENEER BRICK PATTERN (TAN BLEND) PROVA OR SIMILAR
STUCCO ORNDORF MFE - SW 7636 OR SIMILAR	MANUFACTURED STONE VENEER BRICK PATTERN (CHARCOAL BLEND) PROVA OR SIMILAR
STUCCO SKINNE STEEL - SW 1015 OR SIMILAR	FIBER CEMENT LAP SIDING WOODSTONE ASPEN RIDGE OR SIMILAR
STUCCO URBANE BRONZE - SW 7046 OR SIMILAR	FIBER CEMENT LAP SIDING URBANE BRONZE - SW 7046 OR SIMILAR
ASPHALT SHINGLES TAMKO HERITAGE WEATHERED WOOD OR SIMILAR	FIBER CEMENT LAP SIDING SKYLINE STEEL - SW 1015 OR SIMILAR

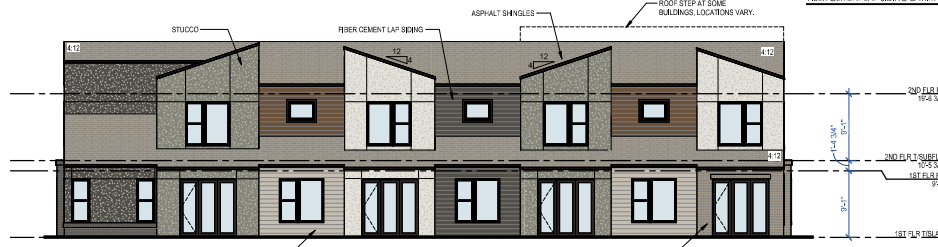
MATERIAL LEGEND



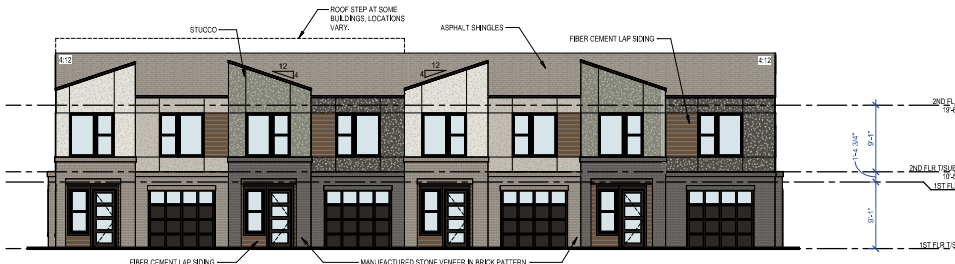
4 4-UNIT TOWNHOMES - RIGHT ELEVATION
1/8" = 1'-0"
PRIMARY FACADE AT BUILDINGS 1 & 11
SECONDARY FACADE AT ALL OTHER BUILDINGS



3 4-UNIT TOWNHOMES - LEFT ELEVATION
1/8" = 1'-0"
PRIMARY FACADE AT BUILDING 4
SECONDARY FACADE AT ALL OTHER BUILDINGS



2 4-UNIT TOWNHOMES - REAR ELEVATION
1/8" = 1'-0"
PRIMARY FACADE AT BUILDINGS 1 & 2
SECONDARY FACADE AT ALL OTHER BUILDINGS



1 4-UNIT TOWNHOMES - FRONT ELEVATION
1/8" = 1'-0"
PRIMARY FACADE AT ALL BUILDINGS

FRONT ELEVATION			
PRIMARY FACADE AT ALL BUILDINGS			
CLASS 1 (MIN. 70%)	MATERIAL	AREAS (SF.)	PERCENT
GLAZING		499.21	22.74%
MANUFACTURED STONE VENEER		573.88	26.14%
STUCCO		651.19	29.66%
			78.53%
CLASS 3			
ASPH. DOOR		237.56	10.82%
FIBER CEMENT LAP SIDING & TRIM		733.85	10.65%
TOTAL			2195.69
			100.00%

LEFT ELEVATION			
PRIMARY FACADE AT BUILDING 4			
SECONDARY FACADE AT ALL OTHER BUILDINGS			
CLASS 1 (MIN. 70% AT PRIMARY FACADE, MIN. 50% AT SECONDARY FACADE)	MATERIAL	AREAS (SF.)	PERCENT
GLAZING		123.16	11.13%
MANUFACTURED STONE VENEER		542.75	49.06%
STUCCO		446.39	39.81%
TOTAL			1106.3
			100.00%

RIGHT ELEVATION			
PRIMARY FACADE AT BUILDINGS 1 & 11			
SECONDARY FACADE AT ALL OTHER BUILDINGS			
CLASS 1 (MIN. 70% AT PRIMARY FACADE, MIN. 50% AT SECONDARY FACADE)	MATERIAL	AREAS (SF.)	PERCENT
GLAZING		66.73	6.21%
MANUFACTURED STONE VENEER		414.16	38.53%
STUCCO		517.88	48.15%
TOTAL			92.89%
CLASS 3			
ASPH. DOOR		27.22	2.53%
FIBER CEMENT LAP SIDING & TRIM		49.25	4.58%
TOTAL			1074.94
			100.00%

REAR ELEVATION			
PRIMARY FACADE AT BUILDINGS 1 & 2			
SECONDARY FACADE AT ALL OTHER BUILDINGS			
CLASS 1 (MIN. 70% AT PRIMARY FACADE, MIN. 50% AT SECONDARY FACADE)	MATERIAL	AREAS (SF.)	PERCENT
GLAZING		558.79	29.00%
MANUFACTURED STONE VENEER		97.71	5.07%
STUCCO		792.85	41.15%
TOTAL			75.22%
CLASS 3			
FIBER CEMENT LAP SIDING & TRIM		477.53	24.78%
TOTAL			1926.88
			100.00%



④ 4-UNIT TOWNHOMES - PERSPECTIVE
NTS



② 4-UNIT TOWNHOMES - PERSPECTIVE
NTS



③ 4-UNIT TOWNHOMES - PERSPECTIVE
NTS



① 4-UNIT TOWNHOMES - PERSPECTIVE
NTS



nspj
ARCHITECTS

nspj
ARCHITECTS

PERSPECTIVE FROM 119TH ST.

RODROCK - FOREST VIEW TOWNHOMES | 119TH & LITTLE CEDAR CREEK | OLATHE, KS

783425 04.17.2026

© NSPJ 2026

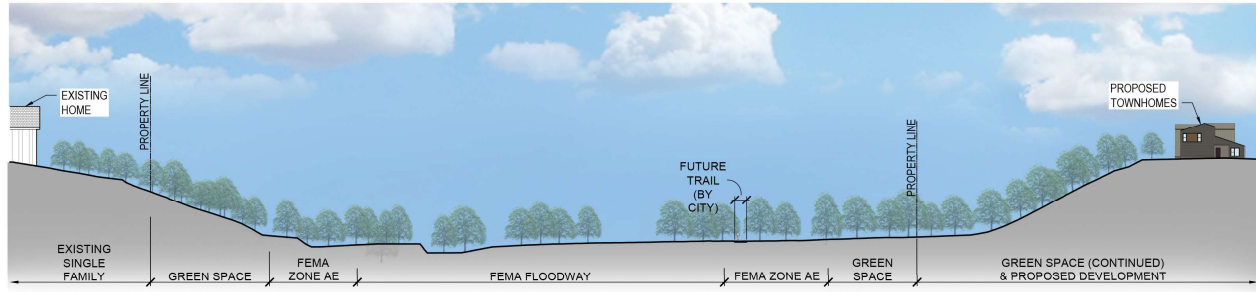


PRELIMINARY DEVELOPMENT PLAN
 SITE PLAN

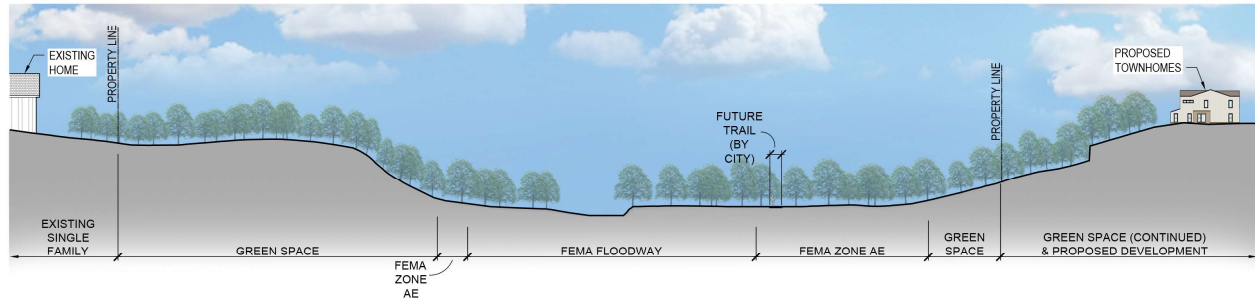
1" = 50'-0"



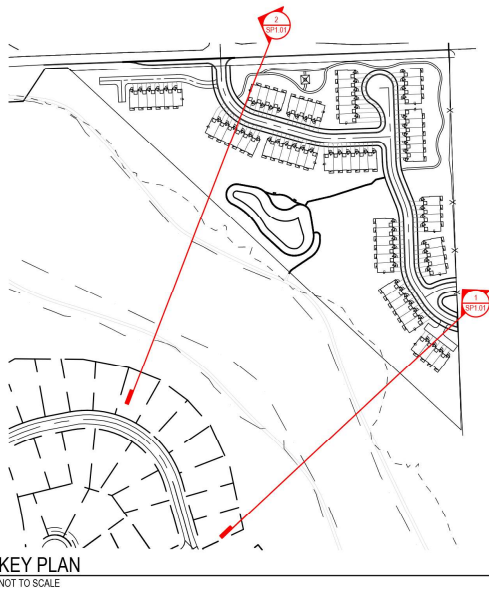




2 SITE SECTION
1" = 40'-0"



1 SITE SECTION
1" = 40'-0"



KEY PLAN
NOT TO SCALE