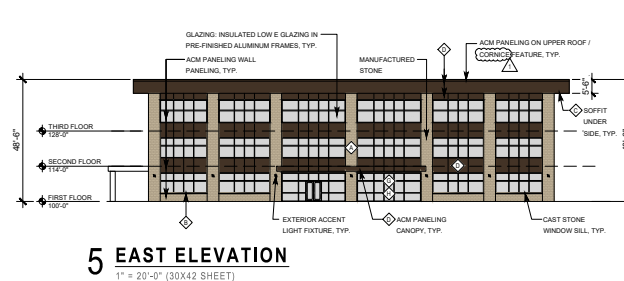
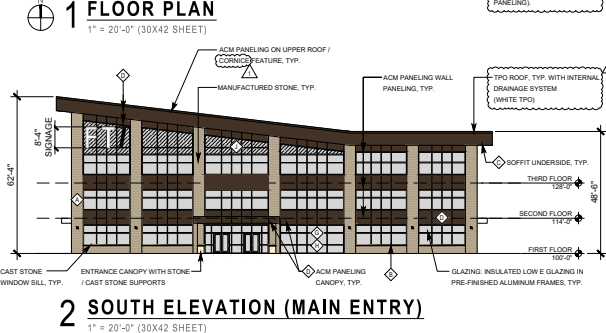
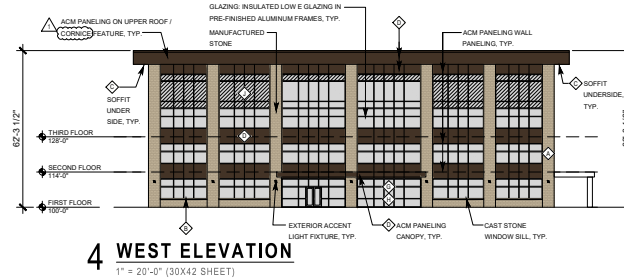
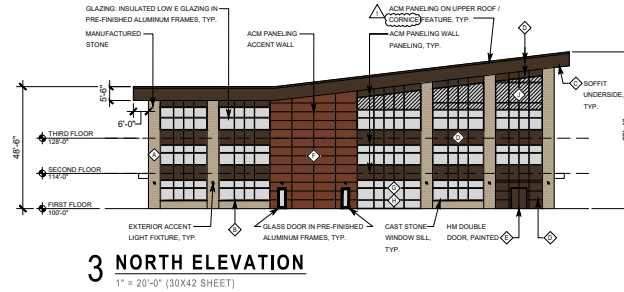
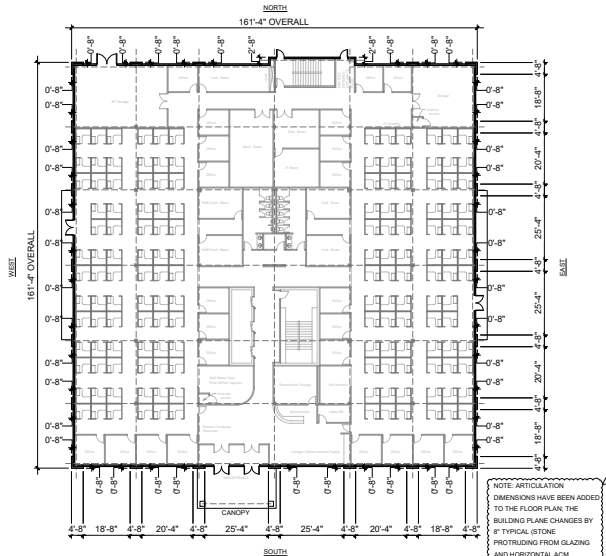




RENDERING - CORNER



RENDERING - FRONT



UNIFIED DEVELOPMENT ORDINANCE REQUIREMENTS
BUILDING MATERIALS TABLE 18.15.020-1

SOUTH FACADE (8620 SF TOTAL)

MATERIAL	CLASS	SF
GLASS - VISION	1	3397 SF
GLASS - SPANDREL	2	583 SF
STONE	1	1772 SF
ACM	1	2868 SF

SOUTH FACADE (8620 SF TOTAL)

8620 SF / 8620 SF = 100% CLASS 1 AND 2 MATERIALS

NORTH FACADE (8620 SF TOTAL)

MATERIAL	CLASS	SF
GLASS - VISION	1	2590 SF
GLASS - SPANDREL	2	528 SF
STONE	1	1321 SF
ACM	1	4139 SF
HM MAN DOOR	4	52 SF

NORTH FACADE (8620 SF TOTAL)

8620 SF / 8620 SF = 99% CLASS 1 AND 2 MATERIALS

52 SF / 8620 SF = 0.6% CLASS 4 MATERIALS

WEST FACADE (10113 SF TOTAL)

MATERIAL	CLASS	SF
GLASS - VISION	1	3269 SF
GLASS - SPANDREL	2	1553 SF
STONE	1	2071 SF
ACM	1	3011 SF

WEST FACADE (10113 SF TOTAL)

10113 SF / 10113 SF = 100% CLASS 1 AND 2 MATERIALS

EAST FACADE (7890 SF TOTAL)

MATERIAL	CLASS	SF
GLASS - VISION	1	3416 SF
GLASS - SPANDREL	2	0 SF
STONE	1	1621 SF
ACM	1	2853 SF

EAST FACADE (7890 SF TOTAL)

7890 SF / 7890 SF = 100% CLASS 1 AND 2 MATERIALS

NOTES:

- 70% MIN. CLASS 1 AND 2 FOR OFFICE BUILDINGS
- 5% MAX. FOR CLASS 4 FOR OFFICE BUILDINGS

EXTERIOR FINISHES

 STONE (MANUFACTURED) MANU TORONADO COLOR: GENOA SANDS 6" SPLIT LIMESTONE, DESIGNER SERIES "CLASS 1: STONE VENEER, SYNTHETIC"	 CAST STONE WINDOW SILL MANU ARSICRAFT COLOR: STONE VENEER, SYNTHETIC"	 SOFFIT METAL PANELING MANU LUX ARCHITECTURAL PRODUCTS COLOR: WALNUT "CLASS 1: ARCHITECTURAL METAL, CONCEALED FASTENING NOTE: NOT TO BE USED ON THE UNDERSIDE OF SOFFIT"
 METAL WALL PANELING UPPER ROOF / CANOPY / LOWER CANOPIES, WALL PANELS MANU ALUCORON COLOR: ANOZICED DARK BRONZE "CLASS 1: COMPOSITE METAL"	 PAINT FOR HM DOORS MANU THEPPIN WILLIAMS COLOR: TO MATCH BRONZE ACM WALL PANELS "CLASS 4: HM DOOR FRAMES, PAINTED"	 METAL WALL PANELING COLLECT WALLS MANU ALUCORON COLOR: RUSSET MICA "CLASS 1: COMPOSITE METAL"
 GLASS - VISION MANU VITRO OPTI-GRAY + SOLARBAN (XGLS) COLOR: ULTRA NEUTRAL, WARM LIGHT GRAY WITH LOW REFLECTIVITY "CLASS 1: CLEAR-LOOK GLASS"	 FRAMES FOR GLAZING MANU VITRO COLOR: DARK BRONZE, ANOZICED FINISH	 GLASS - SPANDREL MANU VITRO OPTI-GRAY + SPANDREL (GREY) OBSID ABOVE CEILING LINE "CLASS 2: SPANDREL"

- GENERAL NOTES:**
- ALL EXTERIOR MOUNTED AND ALL ROOFTOP BUILDING HVAC AND MECHANICAL EQUIPMENT, VENTS, PIPING, ROOF ACCESS LADDERS, AND UTILITY METERS MUST BE LOCATED OUT OF VIEW OR OTHERWISE SCREENED FROM PUBLIC VIEW FROM ALL SIDEWALK, STREET AND RESIDENTIALLY DEVELOPED OR ZONED PROPERTIES. SCREENING MUST BE ACCOMPLISHED WITH LANDSCAPING, SCREEN WALLS, BUILDING ELEMENTS OR A COMBINATION OF THESE METHODS.
 - EXTERIOR GROUND-MOUNTED OR BUILDING-MOUNTED EQUIPMENT INCLUDING, BUT NOT LIMITED TO, MECHANICAL EQUIPMENT, UTILITIES' METER BANKS AND COULERS MUST BE SCREENED FROM PUBLIC VIEW WITH THREE SIDED LANDSCAPING OR WITH AN ARCHITECTURAL TREATMENT COMPARABLE WITH THE BUILDING ARCHITECTURE.
 - THIN BRICK AND STONE VENEER WILL COMPLY WITH IBC 2015.02.02.2.E THIS INCLUDES THE USE OF 1/2" SHARDED CORNER PICES, FULL DEPTH BRICK CAPS, AND CONTINUING BRICK AND STONE VENEER A MINIMUM OF 12 INCHES AROUND WALL CORNERS TO MAINTAIN THE APPEARANCE OF FULL DEPTH BRICK OR REAL STONE.
 - ALL SIGNAGE MUST COMPLY WITH IBC 2015.02.02.2.E AND MUST BE APPROVED ADMINISTRATIVELY THROUGH A SEPARATE APPLICATION.

ARCHITECT:
GMA
1101 STRANG LINE RD
LEWESIA, KS 66215
P: (816) 892-5191
WWW.GMA-ARCHITECTS.COM

DESIGN BUILDER:
ARCO
5450 NW 40TH STREET
RIVERSIDE, MO 64150
P: (816) 282-6224
WWW.ARCONATIONAL.COM

CIVIL ENGINEER:
INCLUREVISION
1101 STRANG LINE RD
LEWESIA, KS 66215
P: (816) 892-7002
HTTPS://INCLUREVISION.COM

PROJECT:
21800 W. 167TH STREET
OLATHE, KANSAS 66062

GMA JOB NO.: GA2031
DRAWN BY: LHM
ORIGINAL SUBMISSION DATE: 03/17/2026
REVISIONS:
REV 1 04/07/2026

SHEET NUMBER
A2.1
ELEVATIONS AND FLOOR PLAN