

RESOLUTION NO. 26-1034

A RESOLUTION OF THE GOVERNING BODY OF THE CITY OF OLATHE, KANSAS, CONSENTING TO THE ENLARGEMENT OF THE CONSOLIDATED MAIN SEWER DISTRICT OF JOHNSON COUNTY, KANSAS, BY THE BOARD OF COUNTY COMMISSIONERS PURSUANT TO THE JOHNSON COUNTY WASTEWATER FACILITIES ACT.

WHEREAS, there comes before the Governing Body for the City of Olathe, Kansas, the matter of the enlargement of the Consolidated Main Sewer District of Johnson County, Kansas. The tract to be included within the sewer district governed by the County is described on Exhibit "A" attached hereto and made a part of this Resolution (the "Property"). Article II Section 2.B.3. of the Johnson County Wastewater Facilities Act provides that the Board of County Commissioners shall not enlarge any sewer district into the limits of any incorporated city without the consent of the governing body of that city; and

WHEREAS, the Property lies within the limits of the City of Olathe; and

WHEREAS, the governing body of the City of Olathe has no objection to the Property being included in the boundaries of the Sanitary Sewer District of Johnson County, Kansas and desires to consent to such enlargement.

NOW, THEREFORE, BE IT RESOLVED BY THE GOVERNING BODY OF THE CITY OF OLATHE, KANSAS, that the City does hereby consent to the enlargement of the Consolidated Main Sewer District of Johnson County, Kansas, and that the Property be included within sewer districts to be governed by the Board of County Commissioners of Johnson County, Kansas.

ADOPTED by the Governing Body this 21st day of April 2026.

APPROVED AND SIGNED by the Mayor this 21st day of April 2026.

City of Olathe, Kansas

Mayor

ATTEST:

City Clerk

APPROVED AS TO FORM:

City Attorney

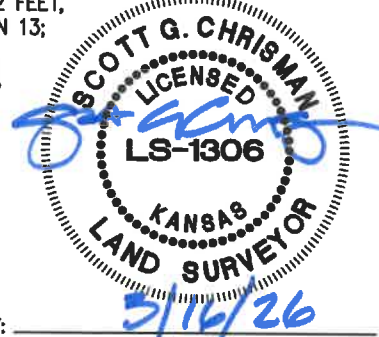
EXHIBIT "A"
DISTRICT ENLARGEMENT EXHIBIT
PART OF THE N. 1/2 SECTION 13, T. 13 S., R. 23 E.,
IN THE CITY OF OLATHE, JOHNSON COUNTY, KANSAS.

DESCRIPTION:

THIS DESCRIPTION WAS PREPARED BY PHELPS ENGINEERING, INC., KS CLS-82 ON AUGUST 7, 2025, FOR PROJECT NO. 250600. ALL THAT PART OF THE NORTH ONE-HALF OF SECTION 13, TOWNSHIP 13 SOUTH, RANGE 23 EAST, IN THE CITY OF OLATHE, JOHNSON COUNTY, KANSAS, BEING MORE PARTICULARLY DESCRIBED AS FOLLOWS:

BEGINNING AT THE NORTHWEST CORNER OF THE NORTHEAST QUARTER OF SAID SECTION 13; THENCE S 89°32'41" E, ALONG THE NORTH LINE OF THE NORTHEAST QUARTER OF SAID SECTION 13, A DISTANCE OF 425.01 FEET; THENCE S 0°27'19" W, A DISTANCE OF 95.02 FEET; THENCE S 2°51'44" E, A DISTANCE OF 92.16 FEET; THENCE S 11°07'54" E, A DISTANCE OF 130.62 FEET; THENCE S 89°33'12" E, A DISTANCE OF 90.22 FEET; THENCE S 27°39'47" E, A DISTANCE OF 107.88 FEET; THENCE S 0°27'38" W, A DISTANCE OF 131.20 FEET; THENCE S 89°32'41" E, A DISTANCE OF 31.62 FEET TO A POINT ON THE WESTERLY RIGHT-OF-WAY LINE OF BURLINGTON NORTHERN SANTA FE RAILROAD, AS NOW ESTABLISHED; THENCE SOUTHERLY ALONG THE WESTERLY RIGHT-OF-WAY LINE OF SAID BURLINGTON NORTHERN SANTA FE RAILROAD AND ON A CURVE TO THE RIGHT, SAID CURVE HAVING AN INITIAL TANGENT BEARING OF S 5°13'21" W AND A RADIUS OF 2710.66 FEET, AN ARC DISTANCE OF 159.72 FEET; THENCE N 80°14'10" W, A DISTANCE OF 39.74 FEET; THENCE S 75°57'47" W, A DISTANCE OF 208.27 FEET; THENCE S 76°31'08" W, A DISTANCE OF 133.83 FEET; THENCE S 50°37'37" W, A DISTANCE OF 53.94 FEET; THENCE S 14°31'45" W, A DISTANCE OF 70.47 FEET; THENCE S 16°51'09" W, A DISTANCE OF 102.82 FEET; THENCE S 28°40'47" W, A DISTANCE OF 180.00 FEET; THENCE S 35°23'40" W, A DISTANCE OF 111.53 FEET; THENCE S 53°11'45" W, A DISTANCE OF 110.31 FEET; THENCE S 68°21'45" W, A DISTANCE OF 80.62 FEET; THENCE S 78°39'24" W, A DISTANCE OF 50.00 FEET; THENCE S 79°11'57" W, ALONG THE NORTH PLAT LINE OF WOODLAND HILLS, SIXTH PLAT, A PLATTED SUBDIVISION OF LAND IN THE CITY OF OLATHE, JOHNSON COUNTY, KANSAS, AND ITS NORTHEASTERLY EXTENSION, A DISTANCE OF 375.74 FEET; THENCE CONTINUING ALONG THE NORTH PLAT LINE OF SAID WOODLAND HILLS, SIXTH PLAT, FOR THE FOLLOWING TWO (2) COURSES; THENCE N 89°39'45" W, A DISTANCE OF 205.32 FEET; THENCE N 76°13'15" W, A DISTANCE OF 153.46 FEET TO AN ANGLE POINT ON THE EASTERLY PLAT LINE OF WOODLAND HILLS, SEVENTH PLAT, A PLATTED SUBDIVISION OF LAND IN THE CITY OF OLATHE, JOHNSON COUNTY, KANSAS; THENCE ALONG THE EASTERLY PLAT LINE OF SAID WOODLAND HILLS, SEVENTH PLAT, FOR THE FOLLOWING TWO (2) COURSES; THENCE NORTHEASTERLY ON A CURVE TO THE RIGHT, SAID CURVE HAVING AN INITIAL TANGENT BEARING OF N 23°47'58" E AND A RADIUS OF 955.00 FEET, AN ARC DISTANCE OF 84.54 FEET; THENCE N 28°52'18" E, A DISTANCE OF 248.58 FEET TO THE NORTHEAST PLAT CORNER OF SAID WOODLAND HILLS, SEVENTH PLAT; THENCE N 61°07'42" W, ALONG THE NORTH PLAT LINE OF SAID WOODLAND HILLS, SEVENTH PLAT, A DISTANCE OF 90.00 FEET; THENCE N 28°52'18" E, A DISTANCE OF 24.15 FEET; THENCE NORTHEASTERLY ON A CURVE TO THE RIGHT, SAID CURVE BEING TANGENT TO THE LAST DESCRIBED COURSE AND HAVING A RADIUS OF 1045.00 FEET, AN ARC DISTANCE OF 396.82 FEET; THENCE NORTHEASTERLY ON A CURVE TO THE LEFT, SAID CURVE BEING TANGENT TO THE LAST DESCRIBED COURSE AND HAVING A RADIUS OF 455.00 FEET, AN ARC DISTANCE OF 399.52 FEET; THENCE N 0°19'09" E, A DISTANCE OF 163.45 FEET; THENCE NORTHERLY ON A CURVE TO THE LEFT, SAID CURVE BEING TANGENT TO THE LAST DESCRIBED COURSE AND HAVING A RADIUS OF 135.00 FEET, AN ARC DISTANCE OF 34.95 FEET; THENCE NORTHERLY ON A CURVE TO THE RIGHT, SAID CURVE BEING TANGENT TO THE LAST DESCRIBED COURSE AND HAVING A RADIUS OF 165.00 FEET, AN ARC DISTANCE OF 42.72 FEET; THENCE N 0°19'09" E, A DISTANCE OF 119.42 FEET, TO A POINT ON THE NORTH LINE OF THE NORTHWEST QUARTER OF SAID SECTION 13; THENCE S 89°40'52" E, ALONG THE NORTH LINE OF THE NORTHWEST QUARTER OF SAID SECTION 13, A DISTANCE OF 440.59 FEET TO THE POINT OF BEGINNING, CONTAINING 29.9143 ACRES, MORE OR LESS, UNPLATTED LAND

I HEREBY CERTIFY THAT THIS REAL PROPERTY LEGAL DESCRIPTION HAS BEEN PREPARED BY ME OR UNDER MY RESPONSIBLE CHARGE.



BY: SCOTT G. CHRISMAN, KS. LS-1306



PLANNING
ENGINEERING
IMPLEMENTATION

PHELPS ENGINEERING, INC (913) 393-1155
 1270 N. Winchester Fax (913) 393-1166
 Olathe, Kansas 66061 www.phelpsengineering.com

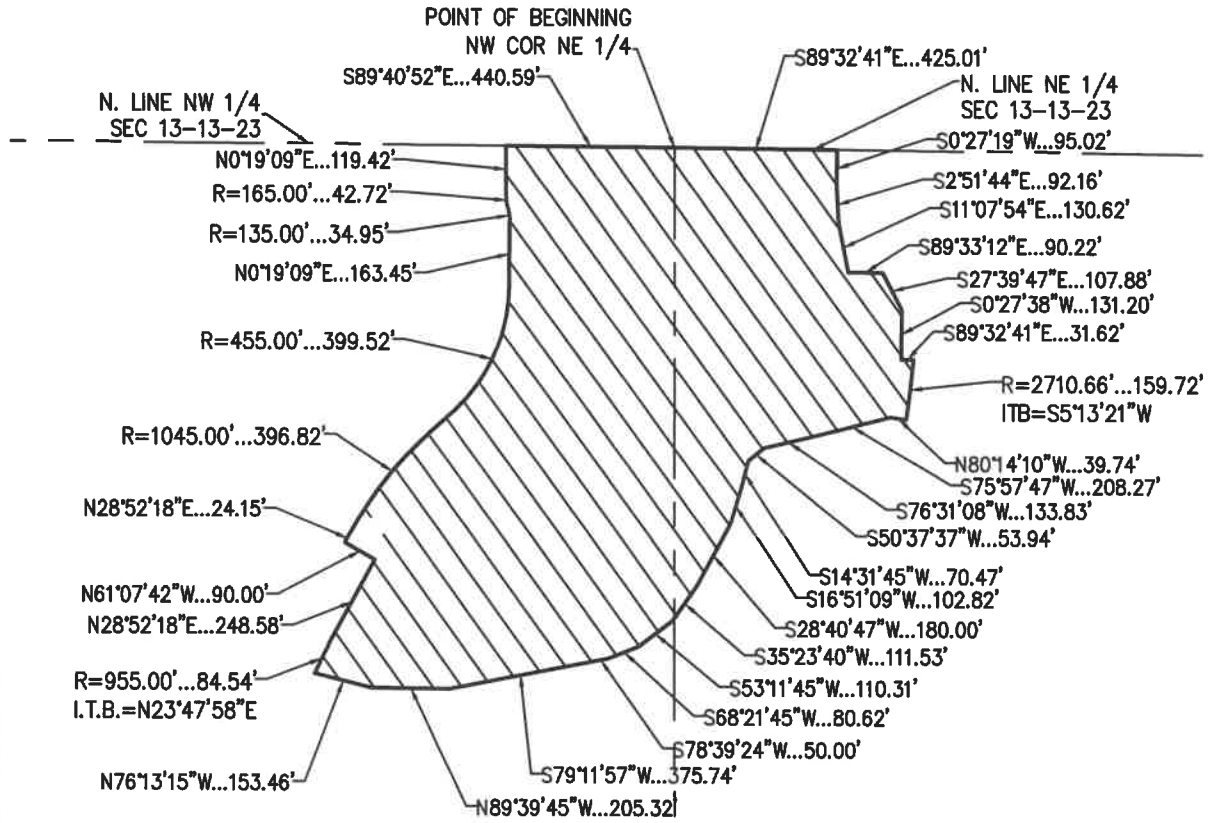
CERTIFICATE OF AUTHORIZATION KANSAS LAND SURVEYING - LS-82
ENGINEERING - E-391
CERTIFICATE OF AUTHORIZATION MISSOURI LAND SURVEYING-2007001128
ENGINEERING-2007005058

PROJECT NO. 250800
DATE: 2/13/26
BY: KGH

EXHIBIT "A"

DISTRICT ENLARGEMENT EXHIBIT

PART OF THE N. 1/2 SECTION 13, T. 13 S., R. 23 E., IN THE CITY OF OLATHE, JOHNSON COUNTY, KANSAS.



SCALE: 1"=500'

0' 500'

I HEREBY CERTIFY THAT THIS REAL PROPERTY LEGAL DESCRIPTION HAS BEEN PREPARED BY ME OR UNDER MY RESPONSIBLE CHARGE.



BY: 3/16/26
SCOTT G. CHRISMAN, KS. LS-1306

SHEET 2 OF 2

\\PHELPS-SERVER\Projects\P\250600\Office\JCUWD, KDHE\Dist. Enlargement\JCW DIST ENLARGEMENT.dwg Layout:2 Mar 16, 2026 - 3:42pm

	<p>PHELPS ENGINEERING, INC (913) 393-1155 1270 N. Winchester Fax (913) 393-1166 Olathe, Kansas 66061 www.phelpsengineering.com</p>	<p>CERTIFICATE OF AUTHORIZATION KANSAS LAND SURVEYING - LS-82 ENGINEERING - E-391 CERTIFICATE OF AUTHORIZATION MISSOURI LAND SURVEYING-2007001128 ENGINEERING-2007005058</p> <p>PROJECT NO. 250600 DATE: 2/13/26 BY: KGH</p>
--	---	---