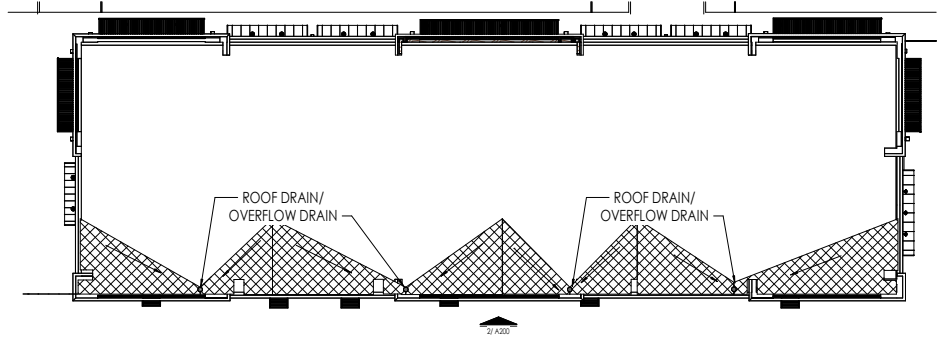
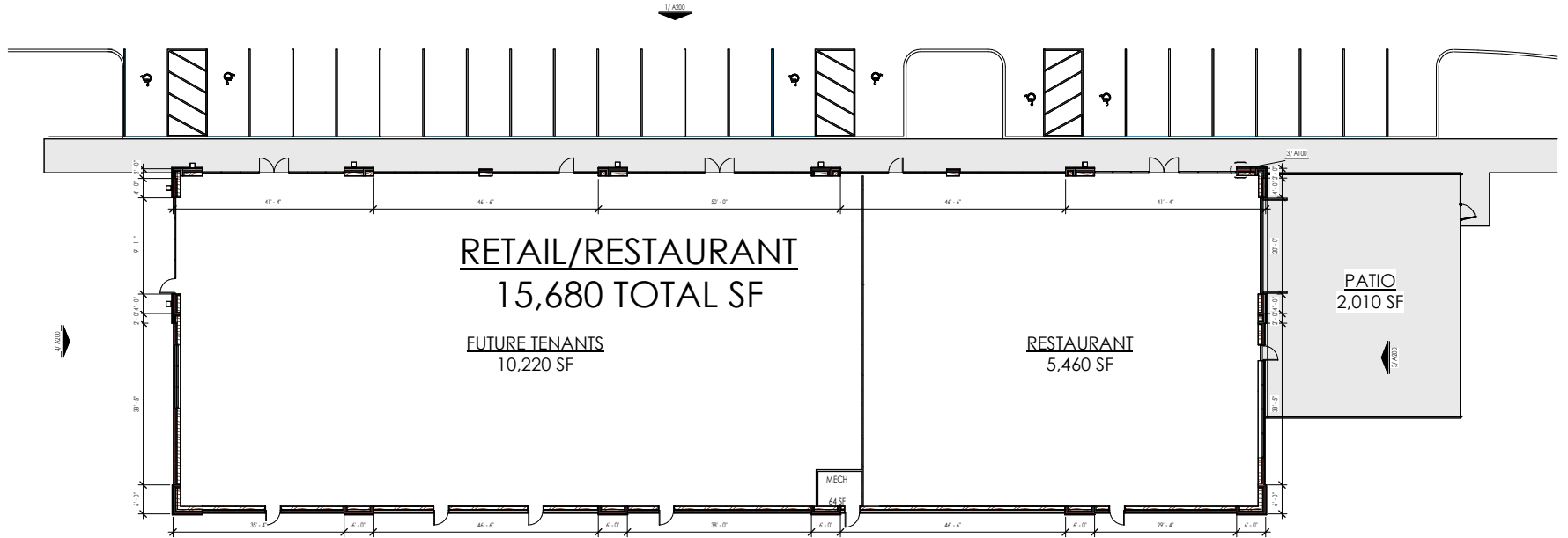


PILASTER DETAIL 3
SCALE: 1/2" = 1'-0"



ROOF PLAN 2
SCALE: 1/16" = 1'-0"



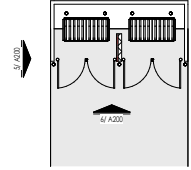
RETAIL/RESTAURANT
15,680 TOTAL SF

FUTURE TENANTS
10,220 SF

RESTAURANT
5,460 SF

PATIO
2,010 SF

MECH
64 SF

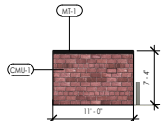


Floor Plan 1
SCALE: 3/32" = 1'-0"

EXTERIOR FINISH LEGEND					
MARK	DESCRIPTION	MANUFACTURER	MODEL/COLOR	COMMENTS	
BRK-1	BURNING BOND	GLEN GERY	RED		
BRK-2	STACKED BOND	IAN			
CMU-1	SPR FACE CMU	RED			
EPS-1	EPS	DRYVIT	IAN		
MT-1	SUPER LUMIDECK FLAT SOFFIT	Mapei Industries Inc.	BLACK	Standard Fishes	
MT-2	METAL AWNING	PAC-CLAD	BLACK		
MT-3	POWDER COATED ALUMINUM	AMERSTAR	BLACK		
SP-1	ALUMINUM STOREFRONT	KAWNEER	BLACK	ANODIZED	
ST-1	GENUINE 3-COAT STUCCO	DRYVIT	GREY		
SN-1	SKY SLACK	RED	GREY		
SN-2	CAST STONE CAP	GREY			



TRASH ENCLOSURE ELEVATION 6
SCALE: 1/8" = 1'-0"



TRASH ENCLOSURE ELEVATION 2 5
SCALE: 1/8" = 1'-0"

NORTH ELEVATION (PRIMARY)							
		SQS MIN.				SQ. MAX.	← REQUIRED
		CLASS 1	CLASS 2	CLASS 3	CLASS 4		
BRK-1	BURNING BOND	773 SF					
BRK-2	STACKED BOND	222 SF					
ST-1	STUCCO	1,658 SF					
SN-1	STONE VENEER	188 SF					
SN-2	CAST STONE CAP	15 SF					
EPS-1	EPS			583 SF			
MT-1	SUPER LUMIDECK FLAT SOFFIT						
MT-2	METAL AWNING						
MT-3	POWDER COATED ALUMINUM						
SP-1	ALUMINUM STOREFRONT	1,843 SF				39%	25% MIN.
CLASS SF TOTAL:		4,707 SF					
CLASS % TOTAL:		88%				12%	
TOTAL FACADE AREA:		5,290 SF					

EAST ELEVATION (PRIMARY)							
		SQS MIN.				SQ. MAX.	← REQUIRED
		CLASS 1	CLASS 2	CLASS 3	CLASS 4		
BRK-1	BURNING BOND	427 SF					
BRK-2	STACKED BOND	74 SF					
ST-1	STUCCO	655 SF					
SN-1	STONE VENEER	146 SF					
SN-2	CAST STONE CAP	16 SF					
EPS-1	EPS			148 SF			
MT-1	SUPER LUMIDECK FLAT SOFFIT						
MT-2	METAL AWNING						
MT-3	POWDER COATED ALUMINUM						
SP-1	ALUMINUM STOREFRONT	373 SF				25%	25% MIN.
CLASS SF TOTAL:		1,594 SF					
CLASS % TOTAL:		91%				9%	
TOTAL FACADE AREA:		1,634 SF					

SOUTH ELEVATION							
		SQS MIN.				SQ. MAX.	← REQUIRED
		CLASS 1	CLASS 2	CLASS 3	CLASS 4		
BRK-1	BURNING BOND	1,627 SF					
BRK-2	STACKED BOND	0 SF					
ST-1	STUCCO	2,500 SF					
SN-1	STONE VENEER	627 SF					
SN-2	CAST STONE CAP	69 SF					
EPS-1	EPS			439 SF			
MT-1	SUPER LUMIDECK FLAT SOFFIT						
MT-2	METAL AWNING						
MT-3	POWDER COATED ALUMINUM						
SP-1	ALUMINUM STOREFRONT						
CLASS SF TOTAL:		4,825 SF					
CLASS % TOTAL:		91%				9%	
TOTAL FACADE AREA:		5,284 SF					

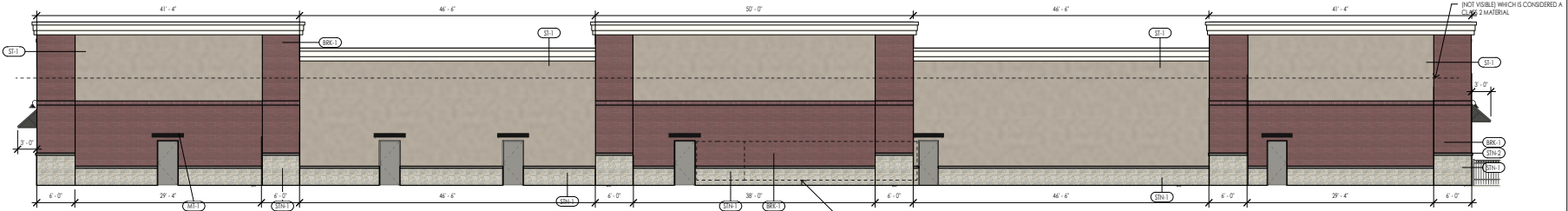
WEST ELEVATION							
		SQS MIN.				SQ. MAX.	← REQUIRED
		CLASS 1	CLASS 2	CLASS 3	CLASS 4		
BRK-1	BURNING BOND	587 SF					
BRK-2	STACKED BOND	74 SF					
ST-1	STUCCO	870 SF					
SN-1	STONE VENEER	176 SF					
SN-2	CAST STONE CAP	17 SF					
EPS-1	EPS			147 SF			
MT-1	SUPER LUMIDECK FLAT SOFFIT						
MT-2	METAL AWNING						
MT-3	POWDER COATED ALUMINUM						
SP-1	ALUMINUM STOREFRONT	279 SF				16%	
CLASS SF TOTAL:		1,930 SF					
CLASS % TOTAL:		91%				9%	
TOTAL FACADE AREA:		1,930 SF					



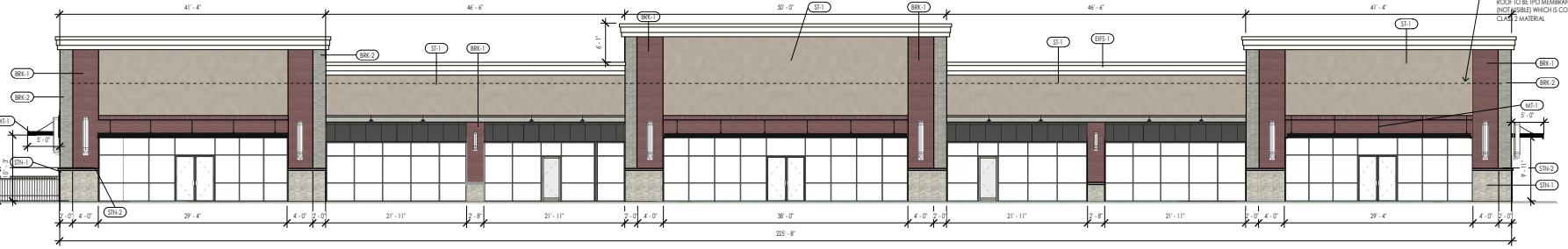
WEST ELEVATION 4
SCALE: 1/8" = 1'-0"



EAST ELEVATION 3
SCALE: 1/8" = 1'-0"



SOUTH ELEVATION 2
SCALE: 1/8" = 1'-0"



NORTH ELEVATION 1
SCALE: 1/8" = 1'-0"

EXTERIOR ELEVATIONS 30

SCALE: 1/8" = 1'-0"



Multi-Tenant Building

R.H. JOHNSON

26/1/2025