









**SEBREE ARCHITECTS**

www.SEBREEarchitects.com  
sebree@SEBREEarchitects.com

97 Dover Street  
Suite 400  
Avon, IN 46223  
Phone: 317-272-7800  
Fax: 317-272-7808

CONSULTANT

GATEWAY LANDING APARTMENTS  
CRG RESIDENTIAL

CLATIE, KS

NOT FOR CONSTRUCTION

CERTIFIED BY

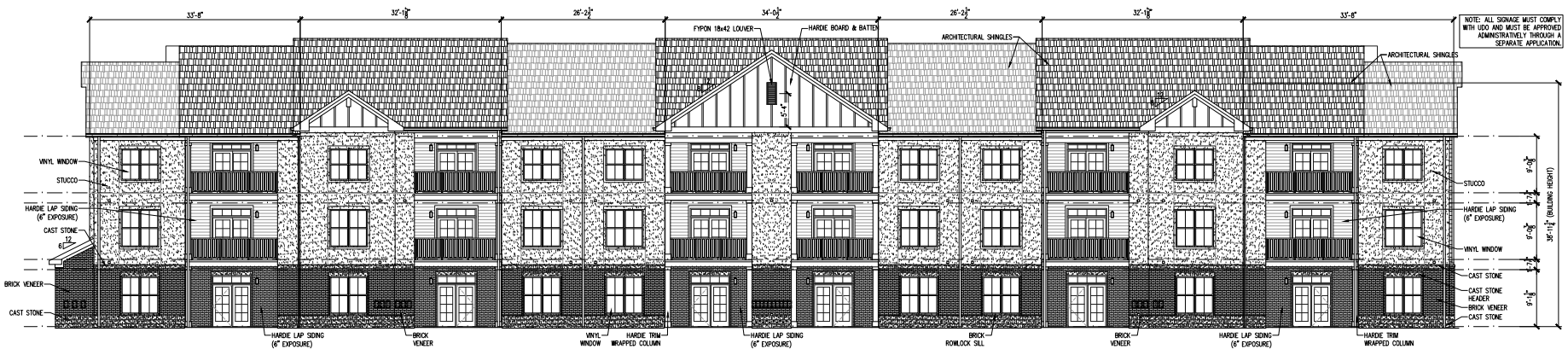
NO.	DATE	BY	DESCRIPTION

DATE	04/21/26	DRAWN BY	RMM
PROJECT NO.	66001	CHECKED BY	KAS

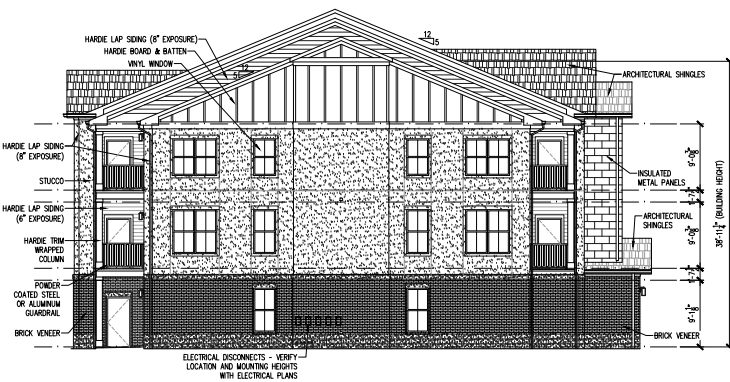
BUILDING TYPE I-30 EXTERIOR ELEVATIONS

SHEET NO. **A5.1a**

BUILDING #4

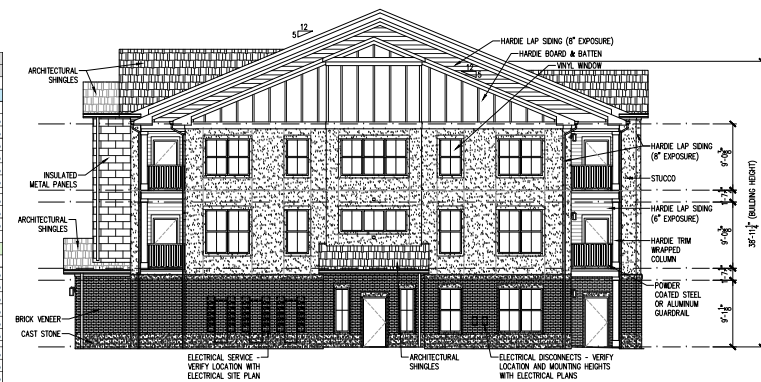


**4 BUILDING TYPE I-30 REAR ELEVATION**  
SCALE: 1/8"=1'-0"  
PRIMARY FACADE

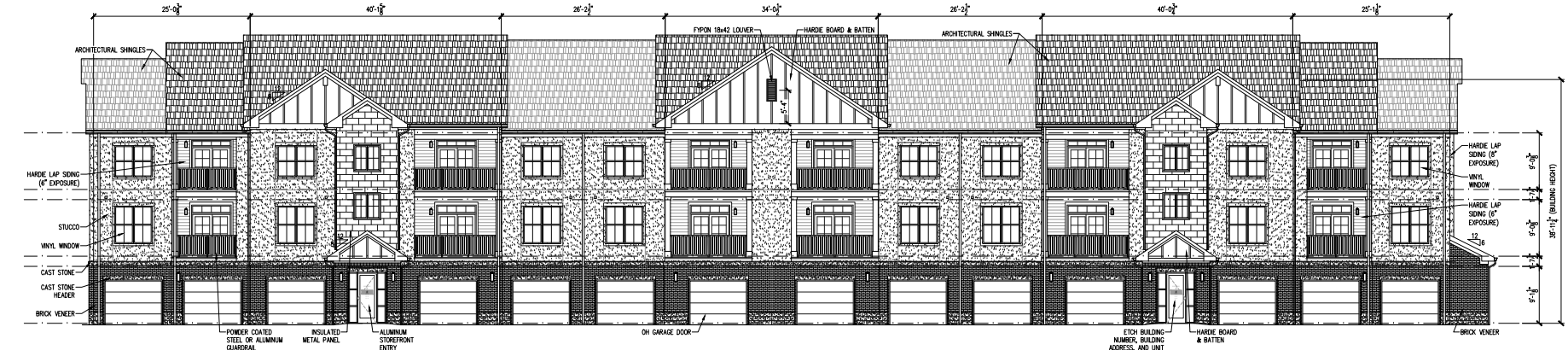


**3 BUILDING TYPE I LEFT SIDE ELEVATION**  
SCALE: 1/8"=1'-0"  
SECONDARY FACADE

FACADE MATERIALITY CALCULATIONS			
Building Type I-30 (#4)			
<b>FRONT ELEVATION (Primary)</b>		<b>RIGHT SIDE ELEVATION (Primary)</b>	
Material	Sq. Ft. % of Total	Material	Sq. Ft. % of Total
Brick	784 14%	Brick	477 20%
Cast Stone	384 7%	Cast Stone	181 8%
Glazing	1,077 20%	Glazing	348 20%
Stucco	1,928 35%	Stucco	804 34%
Insul Mtl Siding	3,300 6%	Insul Mtl Siding	102 4%
Trim/Siding	1,014 18%	Trim/Siding	442 19%
<b>Total Facade</b>	<b>5,517 100%</b>	<b>Total Facade</b>	<b>2,354 100%</b>
<b>Class 1 Total</b>	<b>4,503 82%</b>	<b>Class 1 Total</b>	<b>1,912 81%</b>
<b>Masonry &amp; Glass</b>	<b>4,173 76%</b>	<b>Masonry &amp; Glass</b>	<b>1,810 77%</b>
<b>REAR ELEVATION (Primary)</b>		<b>LEFT SIDE ELEVATION (Secondary)</b>	
Material	Sq. Ft. % of Total	Material	Sq. Ft. % of Total
Brick	1,230 19%	Brick	536 22%
Cast Stone	392 6%	Cast Stone	190 8%
Glazing	1,404 22%	Glazing	224 13%
Stucco	1,998 31%	Stucco	935 38%
Insul Mtl Siding	0	Insul Mtl Siding	102 4%
Trim/Siding	1,408 22%	Trim/Siding	448 18%
<b>Total Facade</b>	<b>6,432 100%</b>	<b>Total Facade</b>	<b>2,445 100%</b>
<b>Class 1 Total</b>	<b>5,024 78%</b>	<b>Class 1 Total</b>	<b>1,997 82%</b>
<b>Masonry &amp; Glass</b>	<b>5,024 78%</b>	<b>Masonry &amp; Glass</b>	<b>1,895 78%</b>



**2 BUILDING TYPE I-30 RIGHT SIDE ELEVATION**  
SCALE: 1/8"=1'-0"  
PRIMARY FACADE



**1 BUILDING TYPE I-30 FRONT ELEVATION**  
SCALE: 1/8"=1'-0"  
PRIMARY FACADE



**SEBREE ARCHITECTS**

www.SEBREEarchitects.com  
sebree@SEBREEarchitects.com

97 Dover Street  
Suite 400  
Avon, IN 46123  
Phone: 317-272-7800  
Fax: 317-272-7808

CONSULTANT

GATEWAY LANDING APARTMENTS  
CRG RESIDENTIAL

CLAUDE KIS

NOT FOR CONSTRUCTION

CERTIFIED BY

DESCRIPTION

NO. DATE BY

DATE 04/21/26  
PROJECT # 16001

BUILDING TYPE I-30  
EXTERIOR ELEVATIONS

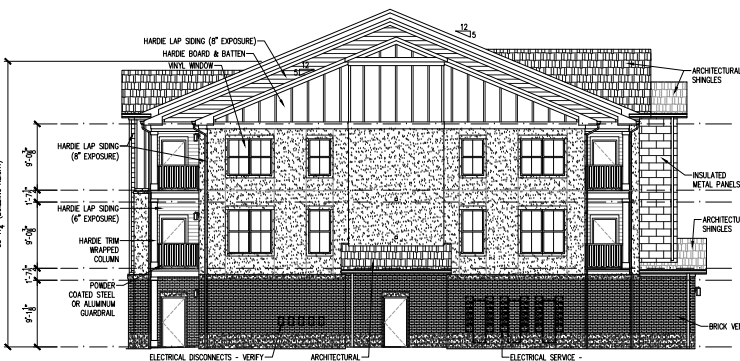
DATE 04/21/26  
PROJECT # 16001  
DRAWN BY RMM  
CHECKED BY KAS

SHEET NO.  
**A5.1b**

NOTE: ALL SIGNAGE MUST COMPLY WITH LEO AND MUST BE APPROVED ARCHITECTURALLY THROUGH A SEPARATE APPLICATION.

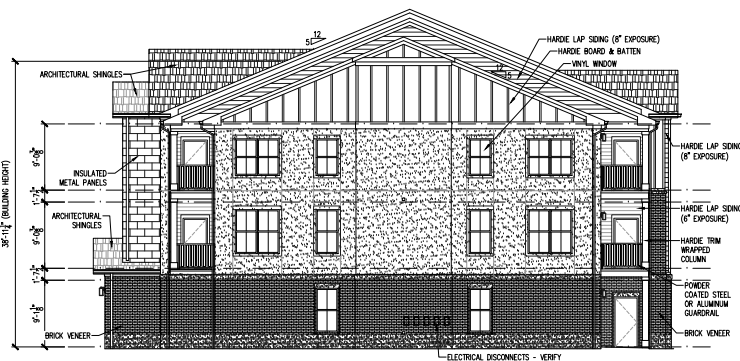


**4 BUILDING TYPE I-30 REAR ELEVATION**  
SCALE: 1/8"=1'-0"  
SECONDARY FACADE



**3 BUILDING TYPE I LEFT SIDE ELEVATION**  
SCALE: 1/8"=1'-0"  
SECONDARY FACADE

FACADE MATERIALITY CALCULATIONS					
Building Type I-30 (R8)					
FRONT ELEVATION (Primary)			RIGHT SIDE ELEVATION (Secondary)		
Material	Sq. Ft.	% of Total	Material	Sq. Ft.	% of Total
Brick	784	14%	Brick	1,367	22%
Cast Stone	384	7%	Cast Stone	191	8%
Glazing	1,077	20%	Glazing	2,346	33%
Stucco	1,928	35%	Stucco	3,900	37%
Insul Mtl Siding	330	6%	Insul Mtl Siding	100	4%
Trim/Siding	1,014	18%	Trim/Siding	448	15%
Total Facade	5,517	100%	Total Facade	2,413	100%
Class 1 Total	4,505	82%	Class 1 Total	1,968	81%
Masonry & Glass	4,173	76%	Masonry & Glass	1,861	77%
REAR ELEVATION (Secondary)			LEFT SIDE ELEVATION (Secondary)		
Material	Sq. Ft.	% of Total	Material	Sq. Ft.	% of Total
Brick	1,230	19%	Brick	1,087	24%
Cast Stone	1,428	7%	Cast Stone	1,697	7%
Glazing	1,404	22%	Glazing	1,986	11%
Stucco	1,140	18%	Stucco	841	35%
Insul Mtl Siding	0	0%	Insul Mtl Siding	102	4%
Trim/Siding	2,261	35%	Trim/Siding	477	20%
Total Facade	6,463	100%	Total Facade	2,355	100%
Class 1 Total	4,202	65%	Class 1 Total	1,878	80%
Masonry & Glass	4,202	65%	Masonry & Glass	1,716	73%



**2 BUILDING TYPE I-30 RIGHT SIDE ELEVATION**  
SCALE: 1/8"=1'-0"  
SECONDARY FACADE



**1 BUILDING TYPE I-30 FRONT ELEVATION**  
SCALE: 1/8"=1'-0"  
PRIMARY FACADE

BUILDING #8





NOTE: ALL SIGNAGE MUST COMPLY WITH UDO AND MUST BE APPROVED ADMINISTRATIVELY THROUGH A SEPARATE APPLICATION.



www.SEBREEarchitects.com  
sebree@SEBREEarchitects.com

97 Dover Street  
Suite 400  
Avon, IN 46123  
Phone: 317-272-7800  
Fax: 317-272-7808

GATEWAY LANDING APARTMENTS  
CRG RESIDENTIAL

NOT FOR CONSTRUCTION

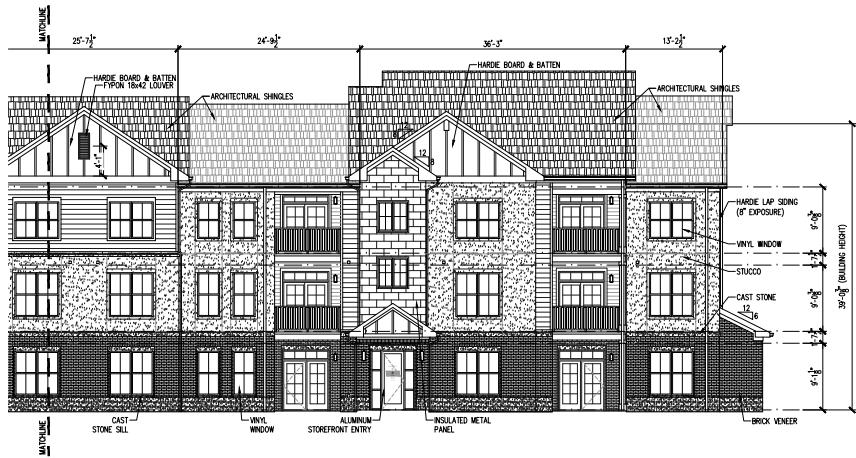
NO.	DATE	BY	DESCRIPTION

DATE: 04/21/26  
CHECKED BY: RMM  
DRAWN BY: KAS

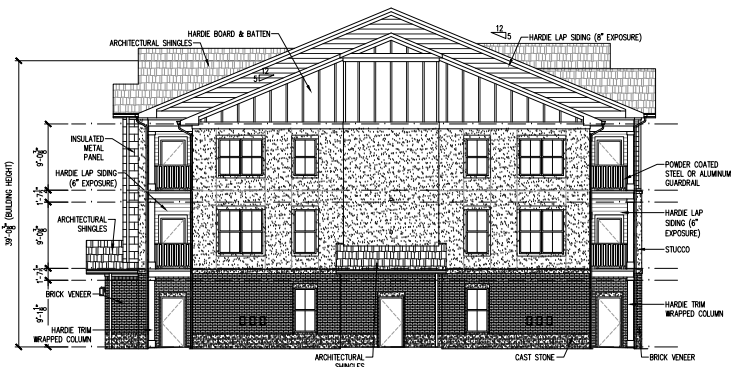
BUILDING TYPE III-36 ALT  
EXTERIOR ELEVATIONS

SHEET NO.  
**A5.2**

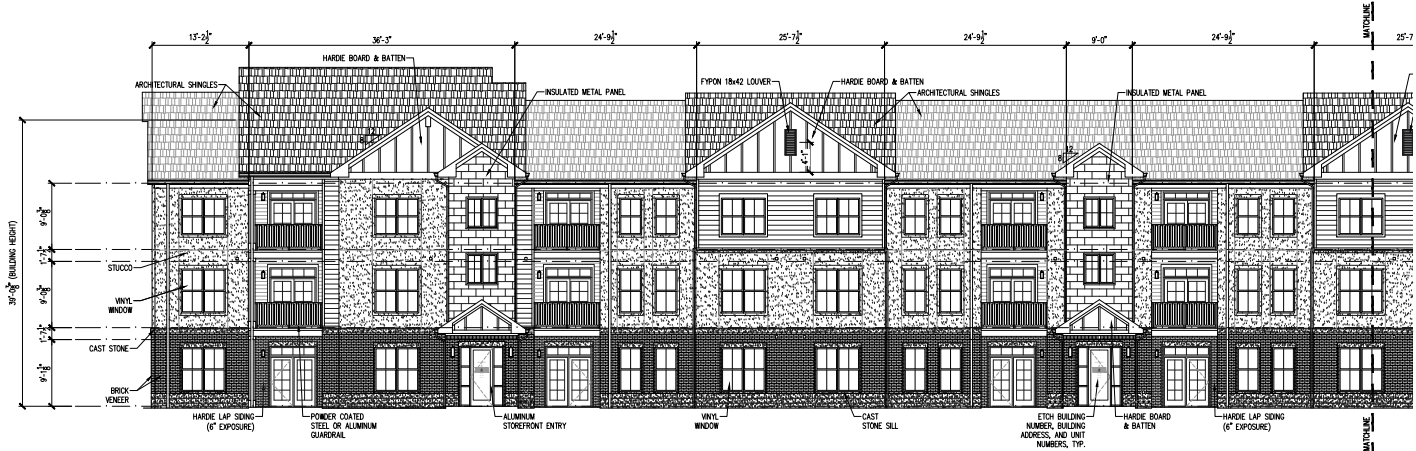
FAÇADE MATERIALITY CALCULATIONS			
Building Type III-36 ALT (#3)			
FRONT ELEVATION (Primary)		RIGHT SIDE ELEVATION (Secondary)	
Material	Sq. Ft. % of Total	Material	Sq. Ft. % of Total
Brick	1,264 16%	Brick	518 23%
Cast Stone	396 8%	Cast Stone	153 7%
Glazing	2,026 26%	Glazing	394 12%
Stucco	2,154 27%	Stucco	827 37%
Insul Mt Siding	444 6%	Insul Mt Siding	41 2%
Trim/Siding	3,295 38%	Trim/Siding	470 20%
Total Façade	7,882 100%	Total Façade	2,245 100%
Class 1 Total	6,484 82%	Class 1 Total	1,773 79%
Masonry & Glass	6,040 77%	Masonry & Glass	1,732 77%
REAR ELEVATION (Secondary)		LEFT SIDE ELEVATION (Primary)	
Material	Sq. Ft. % of Total	Material	Sq. Ft. % of Total
Brick	1,454 19%	Brick	456 20%
Cast Stone	604 8%	Cast Stone	180 8%
Glazing	1,784 23%	Glazing	405 21%
Stucco	1,314 16%	Stucco	776 33%
Insul Mt Siding	0 0%	Insul Mt Siding	41 2%
Trim/Siding	2,712 35%	Trim/Siding	470 20%
Total Façade	7,768 100%	Total Façade	2,328 100%
Class 1 Total	5,056 65%	Class 1 Total	1,858 80%
Masonry & Glass	5,056 65%	Masonry & Glass	1,817 78%



2 BUILDING TYPE III-36 ALT FRONT ELEVATION  
SCALE: 1/8"=1'-0" PRIMARY FAÇADE



3 BUILDING TYPE III-36 ALT RIGHT SIDE ELEVATION  
SCALE: 1/8"=1'-0" SECONDARY FAÇADE



1 BUILDING TYPE III-36 ALT FRONT ELEVATION  
SCALE: 1/8"=1'-0" PRIMARY FAÇADE

NOTE: ALL SIGNAGE MUST COMPLY WITH UDO AND MUST BE APPROVED ADMINISTRATIVELY THROUGH A SEPARATE APPLICATION.



**SEBREE ARCHITECTS**

www.SEBREEarchitects.com  
sebree@SEBREEarchitects.com

97 Dover Street  
Suite 400  
Avon, IN 46123  
Phone: 317-272-7800  
Fax: 317-272-7808

CONSULTANT

GATEWAY LANDING APARTMENTS  
CRG RESIDENTIAL

CLAUDE KR

NOT FOR CONSTRUCTION

CERTIFIED BY

NO.	DATE	BY	DESCRIPTION

DATE: 04/21/26  
PROJECT NO: 66001

DESIGNED BY: RMM  
CHECKED BY: KAS

BUILDING TYPE III-36 ALT EXTERIOR ELEVATIONS

SHEET NO. **A5.2a**

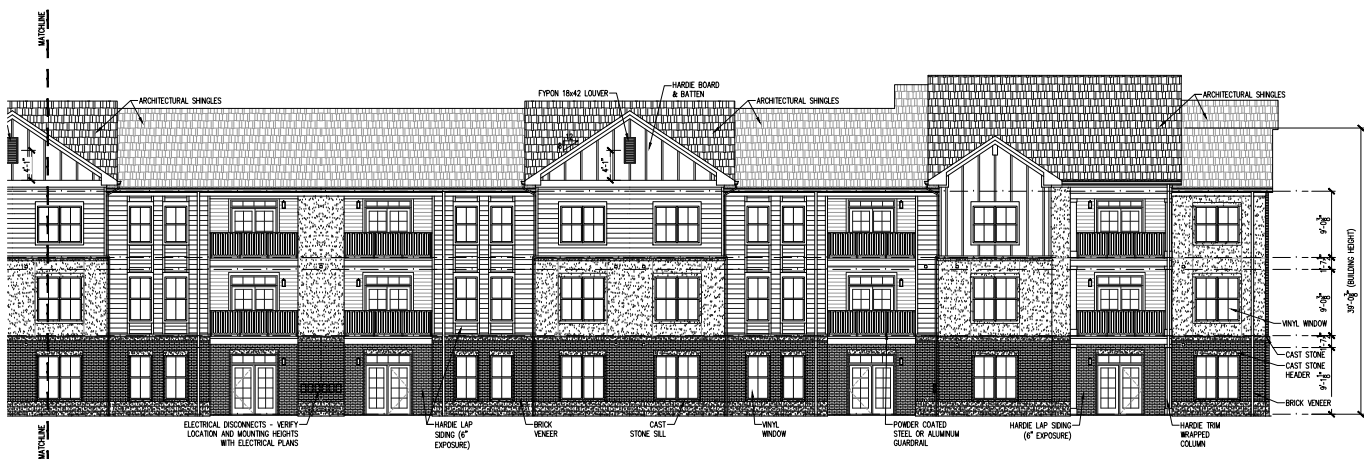
BUILDING #3



2 BUILDING TYPE III-36 ALT REAR ELEVATION  
SCALE: 1/8"=1'-0" SECONDARY FACADE



3 BUILDING TYPE III-36 ALT LEFT SIDE ELEVATION  
SCALE: 1/8"=1'-0" PRIMARY FACADE



1 BUILDING TYPE III-36 ALT REAR ELEVATION  
SCALE: 1/8"=1'-0" SECONDARY FACADE



NOTE: ALL SIGNAGE MUST COMPLY WITH UDO AND MUST BE APPROVED ADMINISTRATIVELY THROUGH A SEPARATE APPLICATION.



**SEBREE ARCHITECTS**

www.SEBREEarchitects.com  
sebree@SEBREEarchitects.com

97 Dover Street  
Suite 400  
Avon, IN 46123  
Phone: 317-272-7800  
Fax: 317-272-7808

CONSULTANT

GATEWAY LANDING APARTMENTS  
CRG RESIDENTIAL

CLAUDE KR

**NOT FOR CONSTRUCTION**

CERTIFIED BY

NO.	DATE	BY	DESCRIPTION

DATE: 04/21/26  
PROJECT NO: 66001

BUILDING TYPE III-36 ALT EXTERIOR ELEVATIONS

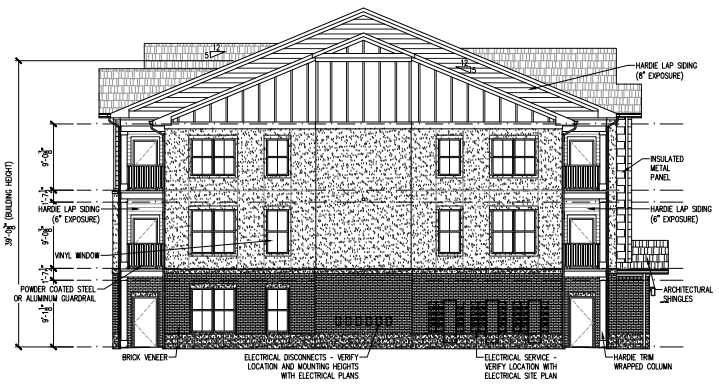
SHEET NO.

**A5.3a**

BUILDING #5



2 BUILDING TYPE III-36 ALT REAR ELEVATION  
SCALE: 1/8\"/>



3 BUILDING TYPE III-36 ALT LEFT SIDE ELEVATION  
SCALE: 1/8\"/>



1 BUILDING TYPE III-36 ALT REAR ELEVATION  
SCALE: 1/8\"/>



NOTE: ALL SIGNAGE MUST COMPLY WITH UDO AND MUST BE APPROVED ADMINISTRATIVELY THROUGH A SEPARATE APPLICATION.



**SEBREE ARCHITECTS**

www.SEBREEarchitects.com  
sebree@SEBREEarchitects.com

97 Dover Street  
Suite 400  
Avon, IN 46123  
Phone: 317-272-7800  
Fax: 317-272-7808

CONSULTANT

GATEWAY LANDING APARTMENTS  
CRG RESIDENTIAL

CLATRE, IGS

NOT FOR CONSTRUCTION

CERTIFIED BY

NO.	DATE	BY	DESCRIPTION

DATE: 04/21/26  
DRAWN BY: RMM  
CHECKED BY: KAS  
PROJECT NO.: 26001

BUILDING TYPE III-36 ALT EXTERIOR ELEVATIONS

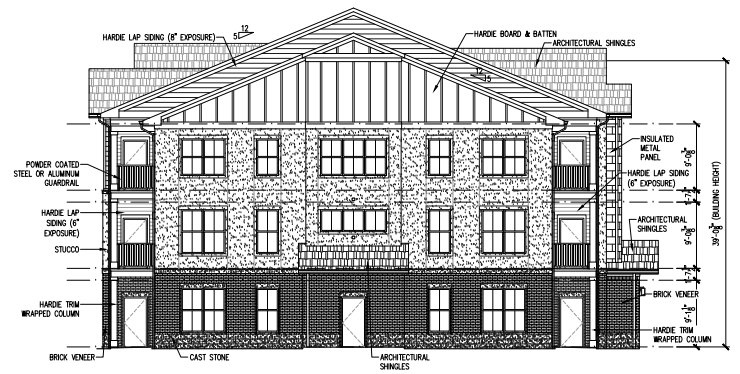
SHEET NO.

**A5.4a**

BUILDING #6



2 BUILDING TYPE III-36 ALT REAR ELEVATION  
SCALE: 1/8"=1'-0" SECONDARY FACADE



3 BUILDING TYPE III-36 ALT LEFT SIDE ELEVATION  
SCALE: 1/8"=1'-0" PRIMARY FACADE



1 BUILDING TYPE III-36 ALT REAR ELEVATION  
SCALE: 1/8"=1'-0" SECONDARY FACADE



**BLDG IV REAR**  
SCALE: 1/8" = 1'-0"



**BLDG IV RIGHT**  
SCALE: 1/8" = 1'-0"



**BLDG IV LEFT**  
SCALE: 1/8" = 1'-0"



**BLDG IV FRONT**  
SCALE: 1/8" = 1'-0"

**GATEWAY LANDING APTS**  
NEW CONSTRUCTION  
**CRG RESIDENTIAL**  
OLATHE, KS  
PRELIMINARY DESIGN

**(NOT FOR CONSTRUCTION)**

BLDG PROJECT #	SCALE
CONTRACT #	DATE
CONTRACTOR	PROJECT NAME
PRELIMINARY	DATE
REVISED	DATE
DATE	DESCRIPTION

ALL IDEAL DESIGN AND PLANS INDICATED OR PREPARED BY IDEAL DESIGN AND COMPANY, INC. ARE THE PROPERTY OF IDEAL DESIGN AND COMPANY, INC. AND THE USER OF SUCH PLANS SHALL BE RESPONSIBLE FOR ALL VIOLATIONS OF THE CODES. ALL RIGHTS RESERVED. EXCEPT FOR IDEAL DESIGN AND COMPANY, INC. NO OTHER REPRODUCTION IS PERMITTED.

**BLDG IV**



NOTE: ALL SIGNAGE MUST COMPLY WITH UDO AND MUST BE APPROVED ADMINISTRATIVELY THROUGH A SEPARATE APPLICATION.



**SEBREE ARCHITECTS**

www.SEBREEarchitects.com  
sebree@SEBREEarchitects.com

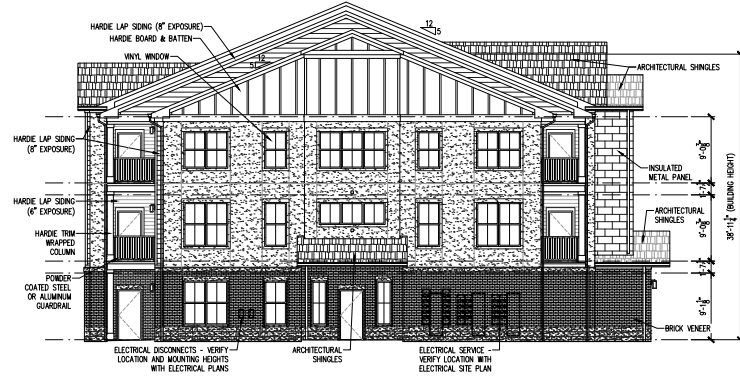
97 Dover Street  
Suite 400  
Avon, IN 46123  
Phone: 317-272-7800  
Fax: 317-272-7808

CONSULTANT

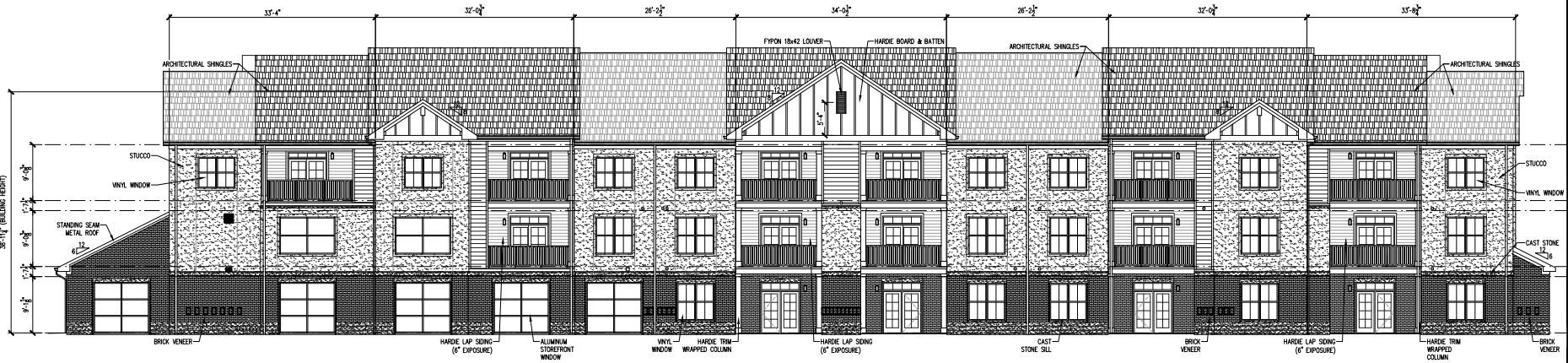
GATEWAY LANDING APARTMENTS  
CRG RESIDENTIAL

CLAUDE, KS

NOT FOR CONSTRUCTION  
CERTIFIED BY



2 BUILDING TYPE IV LEFT SIDE ELEVATION  
SCALE: 1/8"=1'-0"  
PRIMARY FACADE



1 BUILDING TYPE IV REAR ELEVATION  
SCALE: 1/8"=1'-0"  
PRIMARY FACADE

BUILDING #1

NO.	DATE	BY	DESCRIPTION

DATE	04/21/26	DRAWN BY	RMM
PROJECT NO.	6601	CHECKED BY	KAS
BUILDING TYPE IV-26 EXTERIOR ELEVATIONS			
SHEET NO.			

A5.5a



**BLDG V REAR**  
SCALE: 1/8" = 1'-0"



**BLDG V SIDE**  
SCALE: 1/8" = 1'-0"



**BLDG V ALT SIDE**  
SCALE: 1/8" = 1'-0"



**BLDG V FRONT**  
SCALE: 1/8" = 1'-0"

**GATEWAY LANDING APTS**  
 NEW CONSTRUCTION  
**CRG RESIDENTIAL**  
 OLATHE, KS  
 PRELIMINARY DESIGN

(NOT FOR  
 CONSTRUCTION)

NO. PROJECT	DATE
001	08/20/2024
NO. SHEET	DATE
001	08/20/2024
NO. SHEET	DATE
001	08/20/2024
NO. SHEET	DATE
001	08/20/2024

ALL DESIGN AND PLAN INDICATED OR REFERENCED TO THESE CONTRACTS AND SPECIFICATIONS ARE THE PROPERTY OF CRG RESIDENTIAL. CRG RESIDENTIAL SHALL BE RESPONSIBLE FOR ALL INDUSTRY AND CODES. ALL RIGHTS RESERVED. EXCEPT FOR THE INDUSTRY PRACTICES AS NOTED.

BLDG V-32





**SEBREE  
ARCHITECTS**

www.SEBREEarchitects.com  
sebree@SEBREEarchitects.com

97 Dover Street  
Suite 400  
Avon, IN 46123  
Phone: 317-272-7800  
Fax: 317-272-7808

CONSULTANT

**GATEWAY LANDING APARTMENTS  
CRG RESIDENTIAL**

CLIMATE 183

**NOT FOR  
CONSTRUCTION**

CERTIFIED BY

DESCRIPTION

NO. DATE BY

DATE 04/21/26  
PROJECT # 26001

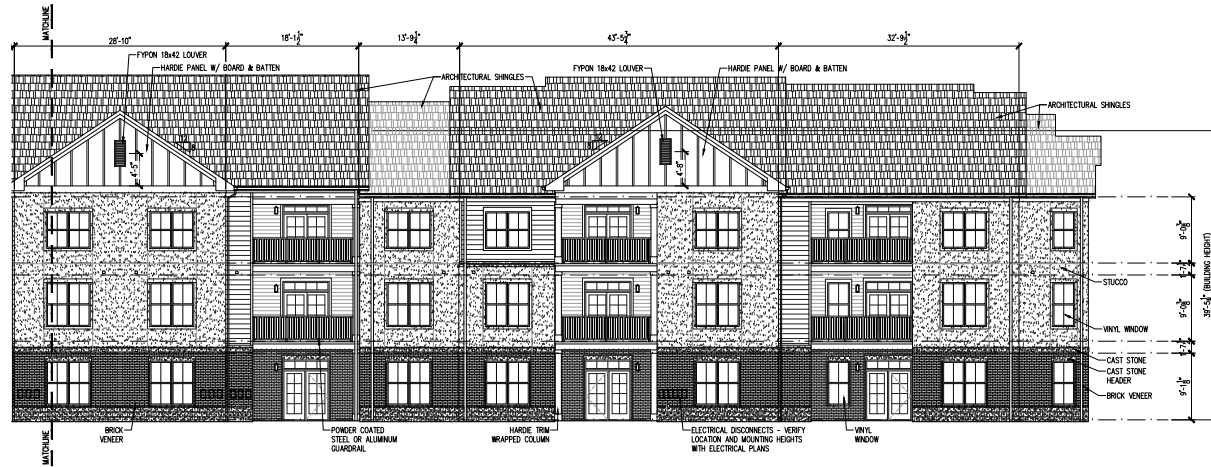
DESIGNED BY RMM  
CHECKED BY KAS

BUILDING TYPE V-32  
EXTERIOR  
ELEVATIONS

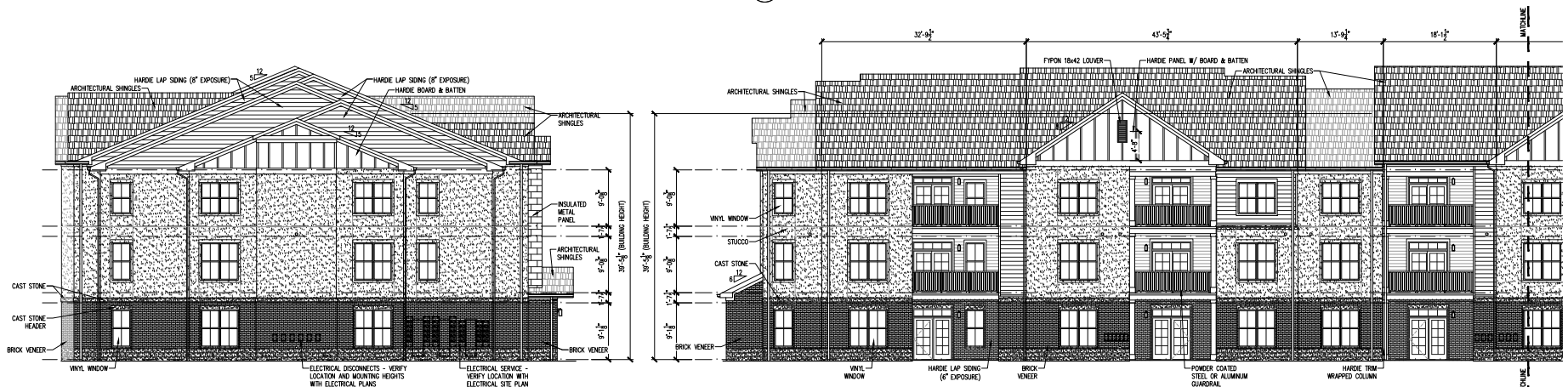
SHEET NO.

**A5.6a**

BUILDING #7



**3 BUILDING TYPE V-32 BACK ELEVATION**  
SCALE: 1/8"=1'-0"  
PRIMARY FACADE



**1 BUILDING TYPE V-32 LEFT SIDE ELEVATION**  
SCALE: 1/8"=1'-0"  
SECONDARY FACADE

**2 BUILDING TYPE V-32 BACK ELEVATION**  
SCALE: 1/8"=1'-0"  
PRIMARY FACADE

NOTE: ALL SIGNAGE MUST COMPLY WITH UDD AND MUST BE APPROVED ADMINISTRATIVELY THROUGH A SEPARATE APPLICATION.



**SEBREE ARCHITECTS**

www.SEBREEarchitects.com  
sebree@SEBREEarchitects.com

97 Dover Street  
Suite 400  
Avon, IN 46123  
Phone: 317-272-7800  
Fax: 317-272-7808

CONSULTANT

GATEWAY LANDING APARTMENTS  
CRG RESIDENTIAL

CLATIE, IBS

NOT FOR CONSTRUCTION

CERTIFIED BY

FAÇADE MATERIALITY CALCULATIONS			
Building Type V-32 (#10)			
FRONT ELEVATION (Primary)		RIGHT SIDE ELEVATION (Primary)	
Material	Sq. Ft. % of Total	Material	Sq. Ft. % of Total
Brick	2,136 15%	Brick	272 17%
Cast Stone	5,246 7%	Cast Stone	224 8%
Glazing	1,473 20%	Glazing	438 22%
Stucco	2,414 33%	Stucco	1,168 43%
Insul Mtl Siding	322 4%	Insul Mtl Siding	44 2%
Trim/Siding	1,484 20%	Trim/Siding	392 14%
<b>Total Façade</b>	<b>7,354 100%</b>	<b>Total Façade</b>	<b>2,739 100%</b>
<b>Class 1 Total</b>	<b>5,870 80%</b>	<b>Class 1 Total</b>	<b>2,347 86%</b>
<b>Masonry &amp; Glass</b>	<b>5,548 75%</b>	<b>Masonry &amp; Glass</b>	<b>2,303 84%</b>

REAR ELEVATION (Primary)		LEFT SIDE ELEVATION (Primary)	
Material	Sq. Ft. % of Total	Material	Sq. Ft. % of Total
Brick	1,416 18%	Brick	422 16%
Cast Stone	578 7%	Cast Stone	214 8%
Glazing	1,784 22%	Glazing	408 21%
Stucco	2,418 30%	Stucco	1,176 44%
Insul Mtl Siding	0	Insul Mtl Siding	44 2%
Trim/Siding	1,884 23%	Trim/Siding	392 15%
<b>Total Façade</b>	<b>8,080 100%</b>	<b>Total Façade</b>	<b>2,656 100%</b>
<b>Class 1 Total</b>	<b>6,196 77%</b>	<b>Class 1 Total</b>	<b>2,264 85%</b>
<b>Masonry &amp; Glass</b>	<b>6,196 77%</b>	<b>Masonry &amp; Glass</b>	<b>2,220 84%</b>



2 BUILDING TYPE V-32 FRONT ELEVATION  
SCALE: 1/8"=1'-0"  
PRIMARY FAÇADE



3 BUILDING TYPE V-32 RIGHT SIDE ELEVATION  
SCALE: 1/8"=1'-0"  
PRIMARY FAÇADE



1 BUILDING TYPE V-32 FRONT ELEVATION  
SCALE: 1/8"=1'-0"  
PRIMARY FAÇADE

BUILDING #10

NO.	DATE	BY	DESCRIPTION

DATE: 04/21/26  
PROJECT NO: 26001  
DRAWN BY: RMM  
CHECKED BY: KAS

BUILDING TYPE V-32  
EXTERIOR ELEVATIONS

SHEET NO.  
**A5.7**



**SEBREE  
ARCHITECTS**

www.SEBREEarchitects.com  
sebree@SEBREEarchitects.com

97 Dover Street  
Suite 400  
Avon, IN 46123  
Phone: 317-272-7800  
Fax: 317-272-7808

CONSULTANT

**GATEWAY LANDING APARTMENTS  
CRG RESIDENTIAL**

CLATRE, KS

**NOT FOR  
CONSTRUCTION**

CERTIFIED BY

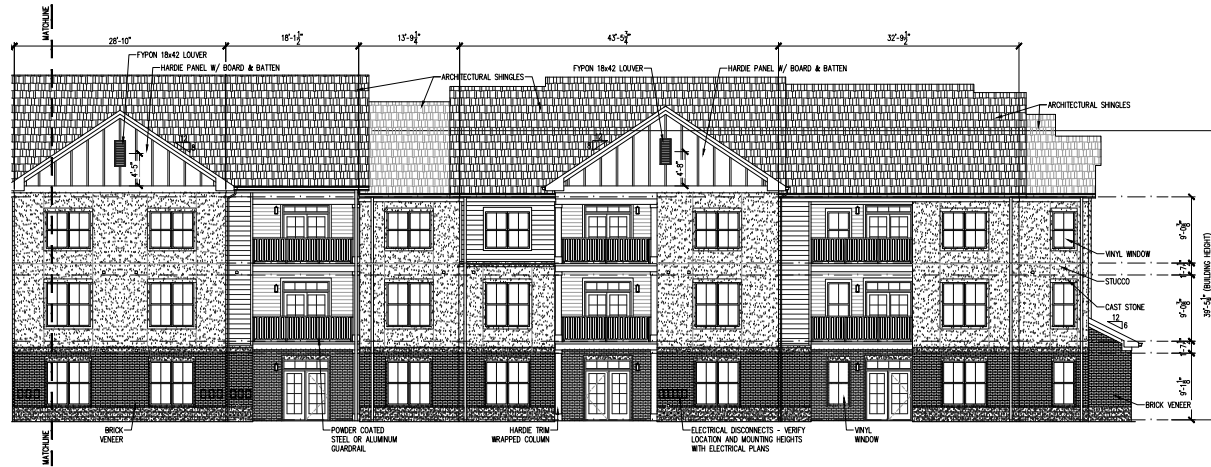
NO.	DATE	BY	DESCRIPTION

DATE	BY	DESCRIPTION
04/21/26	RMM	
PROJECT NO. 26001	CAS	

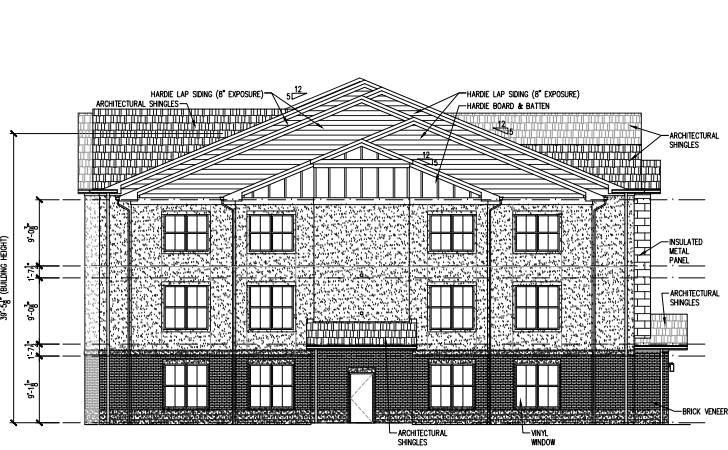
BUILDING TYPE V-32  
EXTERIOR  
ELEVATIONS  
SHEET NO.

**A5.7a**

BUILDING #10



**3 BUILDING TYPE V-32 BACK ELEVATION**  
SCALE: 1/8"=1'-0"  
PRIMARY FACADE



**1 BUILDING TYPE V-32 LEFT SIDE ELEVATION**  
SCALE: 1/8"=1'-0"  
PRIMARY FACADE



**2 BUILDING TYPE V-32 BACK ELEVATION**  
SCALE: 1/8"=1'-0"  
PRIMARY FACADE