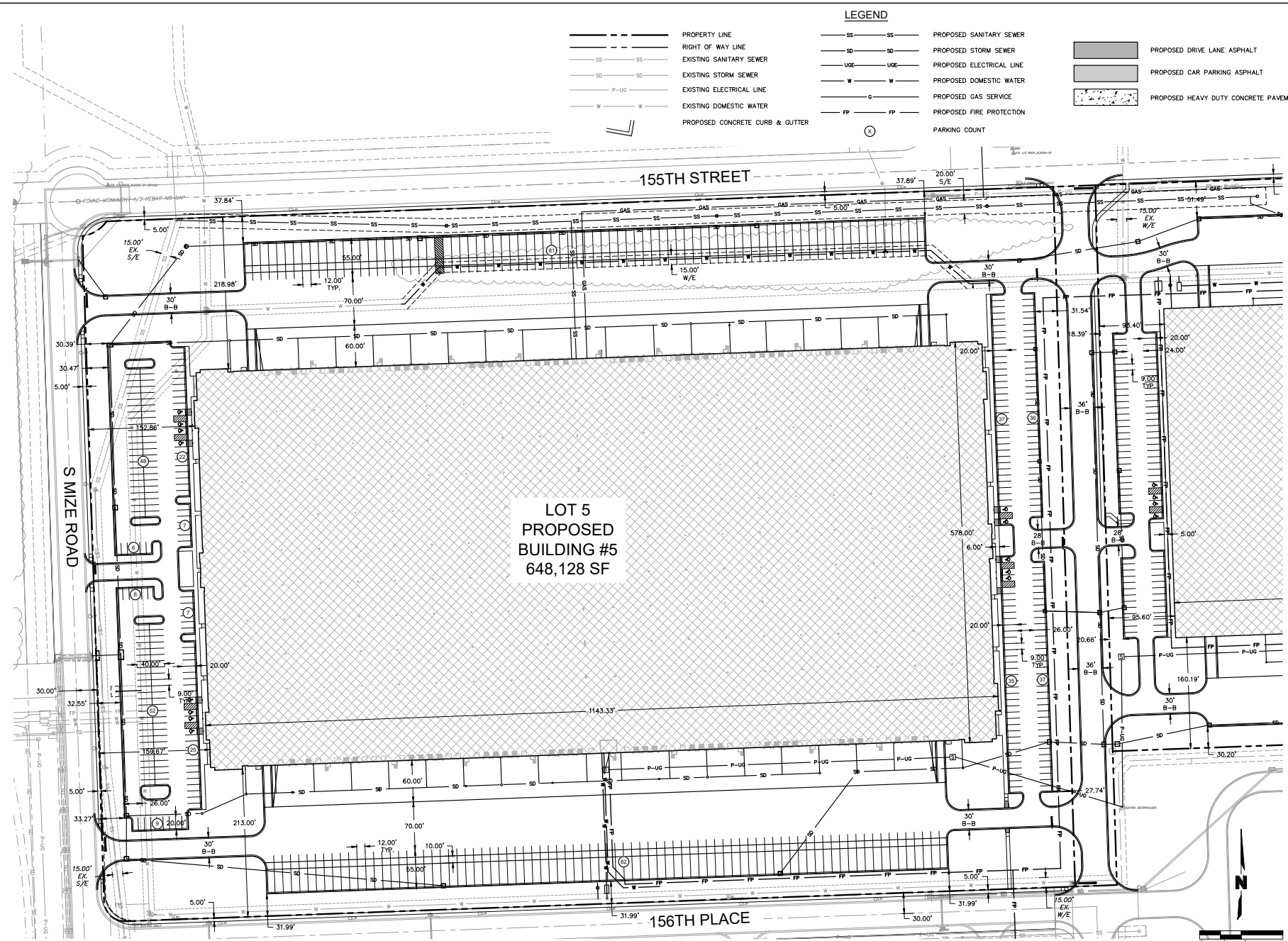


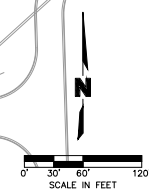
DWG: P:\2021\0650-0700\01-06222-V\0650\AutoCAD\preliminary plans\Sheet A\SWA_C\REN0_POP_0106222.dwg USER: jmodermott
 DATE: Apr 13, 2023 4:24pm ADRS: C:\SWA_C\REN0_POP_0106222 C:\SWA_C\REN0_POP_0106222 C:\SWA_C\REN0_POP_0106222



LOT 5
 PROPOSED
 BUILDING #5
 648,128 SF

LEGEND

- PROPERTY LINE
- - - RIGHT OF WAY LINE
- SS SS EXISTING SANITARY SEWER
- SD SD EXISTING STORM SEWER
- P-UG EXISTING ELECTRICAL LINE
- W W EXISTING DOMESTIC WATER
- PROPOSED CONCRETE CURB & GUTTER
- SS SS PROPOSED SANITARY SEWER
- SD SD PROPOSED STORM SEWER
- UGE UGE PROPOSED ELECTRICAL LINE
- W W PROPOSED DOMESTIC WATER
- G G PROPOSED GAS SERVICE
- FP FP PROPOSED FIRE PROTECTION
- PARKING COUNT
- PROPOSED DRIVE LANE ASPHALT
- PROPOSED CAR PARKING ASPHALT
- PROPOSED HEAVY DUTY CONCRETE PAVEMENT



olsson

700 West 13th Street, Suite 200
 Olathe Park, KS 66151-2750
 TEL 813.381.1170 www.olsson.com

REV. NO.	DATE	REVISION DESCRIPTION	BY

REVISIONS

2026

OLATHE, KANSAS

2026

DIMENSION PLAN - BUILDING 5
 PRELIMINARY DEVELOPMENT PLAN

OLATHE 855 LOGISTICS

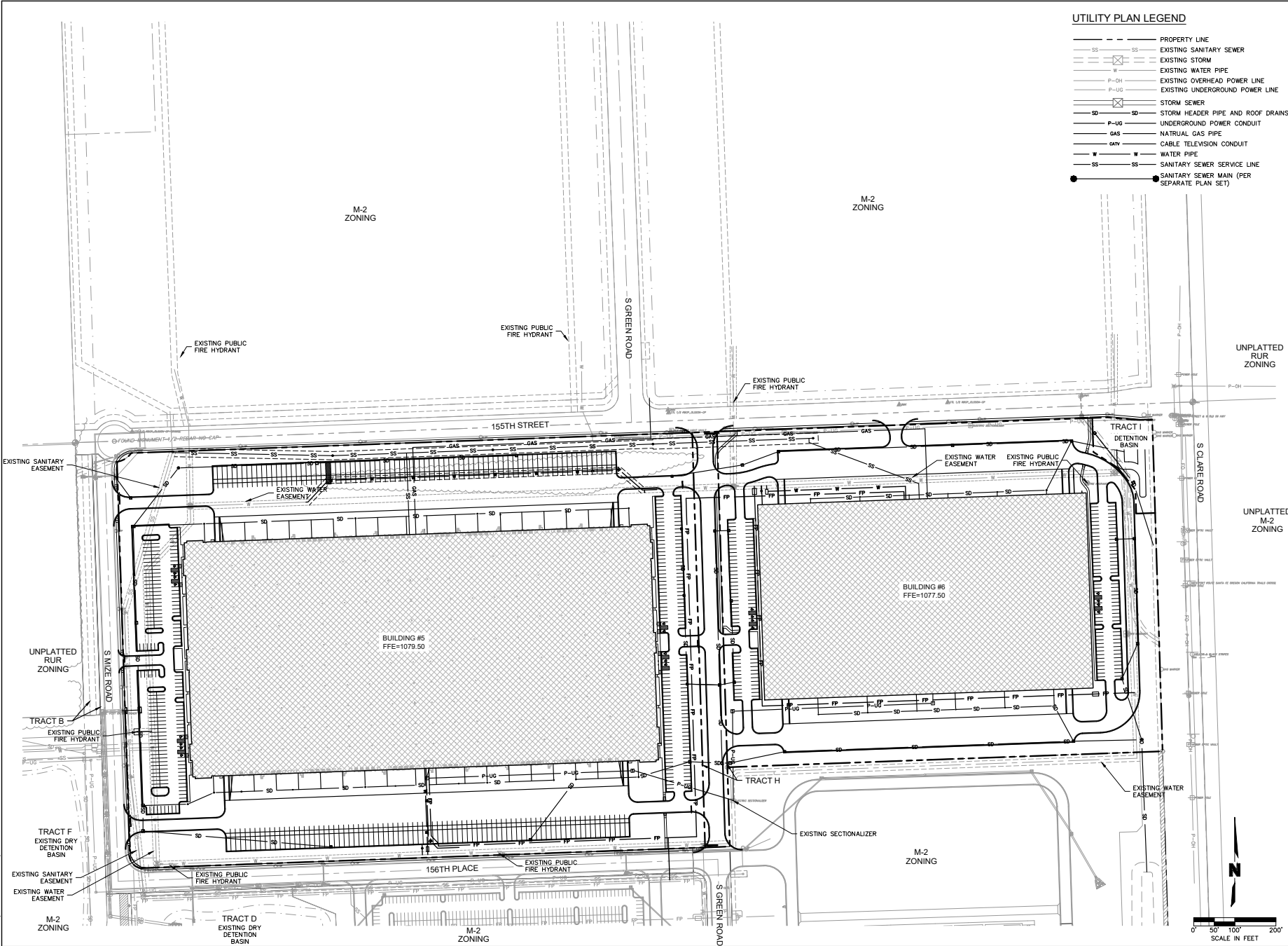
2026

drawn by: _____
 checked by: _____
 approved by: _____
 project no.: _____
 drawing no.: _____
 date: _____

SCALE IN FEET

SHEET
 C1.1

DWG: P:\2021\0650-07000\021-08222-1\06-0650\AutoCAD\preliminary plans\Sheet\A\Sheet\A_C3.DWG_PDP_070622.dwg USER: jrdm002
 DATE: 04/13/2024 4:25pm ADRS: C:\DRS\2024\0722 C:\DRS\2024\0722 C:\DRS\2024\0722



UTILITY PLAN LEGEND

---	PROPERTY LINE
SS	EXISTING SANITARY SEWER
SD	EXISTING STORM
W	EXISTING WATER PIPE
P-OH	EXISTING OVERHEAD POWER LINE
P-UG	EXISTING UNDERGROUND POWER LINE
SD	STORM SEWER
SD	STORM HEADER PIPE AND ROOF DRAINS
P-UG	UNDERGROUND POWER CONDUIT
GAS	NATURAL GAS PIPE
CATV	CABLE TELEVISION CONDUIT
W	WATER PIPE
SS	SANITARY SEWER SERVICE LINE
●	SANITARY SEWER MAIN (PER SEPARATE PLAN SET)

olsson

2701 West 134th Street, Suite 200
 Overland Park, KS 66213-2750
 TEL 913.381.1170 www.olsson.com

BY: _____

REVISIONS

REV. NO.	DATE	REVISION DESCRIPTION

OVERALL UTILITY PLAN
 PRELIMINARY DEVELOPMENT PLAN
 OLATHE 055 LOGISTICS

2026

drawn by: _____

checked by: _____

approved by: _____

QA/QC by: _____

project no.: _____

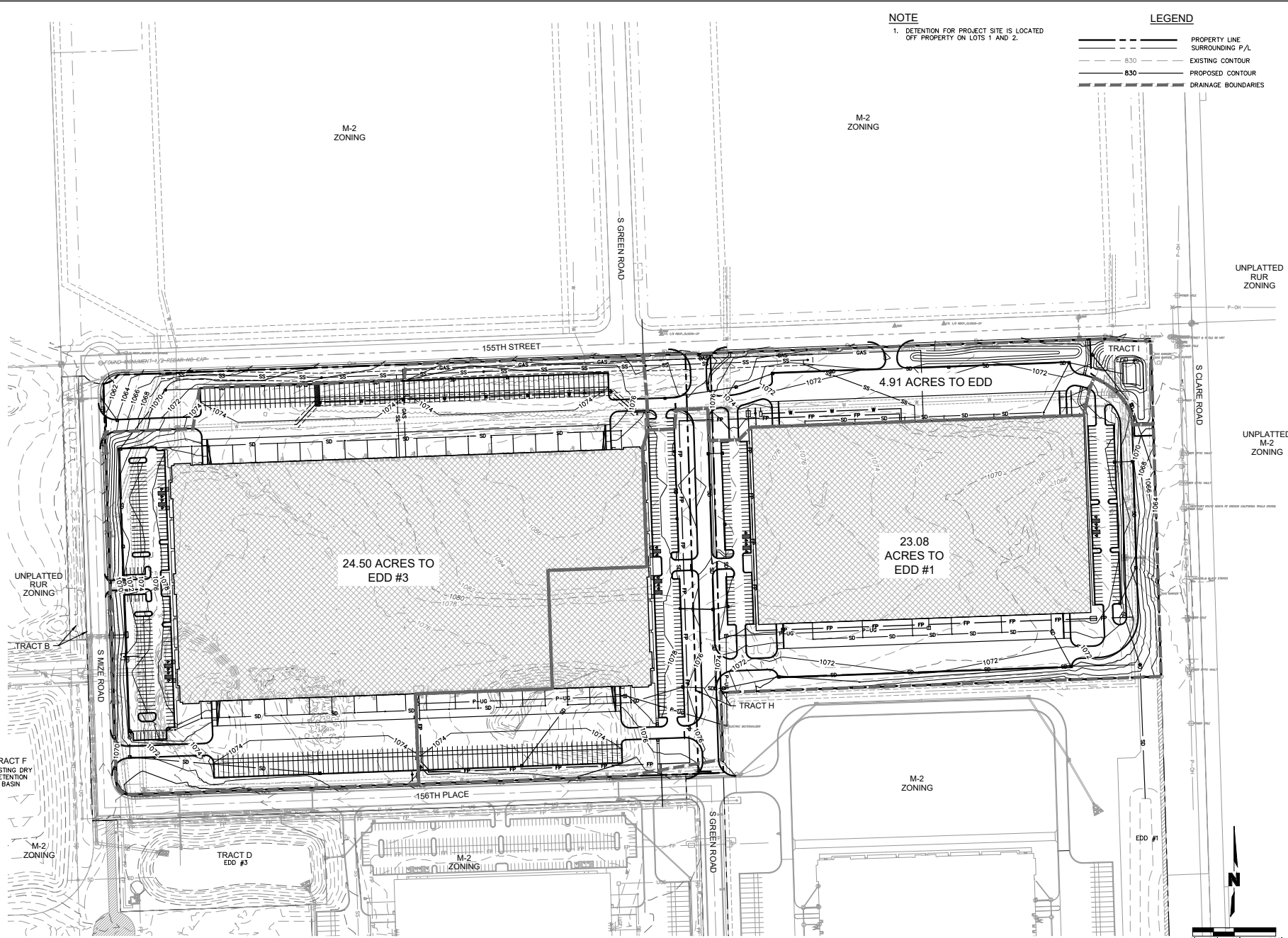
drawing no.: _____

date: _____

OLATHE, KANSAS

SHEET
 C3.0

DWG: P:\2021\0659-0700\01-0622c\1-dwg\edd\10550\preliminary plans\Sheet\A_Sheet_V_C_BIRD_Plan_C0104722.dwg USER: jmadmon07
 DATE: APR 13 2025 4:58pm ADRS: C:\Users\jmadmon07\AppData\Local\Temp\10550\10550.dwg C:\Users\jmadmon07\AppData\Local\Temp\10550\10550.dwg



NOTE
 1. DETENTION FOR PROJECT SITE IS LOCATED OFF PROPERTY ON LOTS 1 AND 2.

LEGEND

- PROPERTY LINE
- SURROUNDING P/L
- - - 830 EXISTING CONTOUR
- - - 830 PROPOSED CONTOUR
- DRAINAGE BOUNDARIES

olsson
 2701 West 134th Street, Suite 200
 Overland Park, KS 66203-2750
 TEL 913.381.1170 www.olson.com

REV. NO.	DATE	REVISIONS DESCRIPTION	BY

STORMWATER MANAGEMENT PLAN
 PRELIMINARY DEVELOPMENT PLAN
 OLATHE 855 LOGISTICS

2026

OLATHE, KANSAS

drawn by: _____
 checked by: _____
 approved by: _____
 GAO/C by: _____
 project no.: _____
 drawing no.: _____
 date: _____

SHEET
 C4.0