

TREE PLANTING NOTES:

- DO NOT HEAVILY PRUNE THE TREE. PRUNE ONLY CROSSOVER LIMBS, CO-DOMINANT LEADERS, BRISKEN OR DEAD BRANCHES. SOME INTERIOR THIGHS & LATERAL BRANCHES MAY BE PRUNED. DO NOT REMOVE THE TERMINAL BUDS OF BRANCHES THAT EXTEND TO THE EDGE OF THE CROWN.
- MARK THE NORTH SIDE OF THE TREE IN THE NURSERY. ANNOTATE TREE TO FACE NORTH AT THE SITE WHEN POSSIBLE.
- SET TOP OF ROOT BALL 12 INCHES HIGHER THAN SURROUNDING GRADE.
- APPLY 4" THK WOOD MULCH. DO NOT PLACE MULCH IN DIRECT CONTACT W/ TREE TRUNK.



1 PLANTING INSTALLATION DETAILS

SCALE: NIS

STAKING REQUIREMENTS:

- WIRE CABLE SHALL BE GALV. 12-GAUGE.
- TIGHTEN WIRE / CABLE ONLY ENOUGH TO KEEP FROM SLIPPING. ALLOW FOR SOME TRUNK MOVEMENT. PLASTIC HOSE SHALL BE LONG ENOUGH TO ACCOMMODATE 1/2" OF GROWTH.
- STAKES SHALL BE 2x 2" HARDWOOD OR EQUAL.

PERSONNEL & PLANTING NOTES:

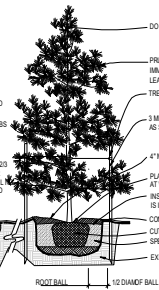
- APPLY 2" THK BED OF MULCH ON PERMANENT PLANT BED. DO NOT COVER PLANTS.
- THOROUGHLY MIX PEAT IN TOP 4" OF SOIL.
- BREAK UP EXISTING SOIL TO A DEPTH OF 3"
- PRODUCE NEW TOPSOIL TO A DEPTH OF 12"

SHRUB PLANTING NOTES:

- SET SHRUB AT SAME DEPTH AS ROOT BALL IN FIELD OR CONTAINER.
- FRAME TRUNK SHAKE SHRUBS IN ACCORDANCE W/ STANDARD HORTICULTURAL PRACTICE.

NOTES REGARDING:

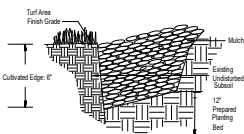
- WHEN BACKFILL IS 20% COMPOSITE WATER THOROUGHLY UNTIL MORE IS ABSORBED.



- DO NOT PRUNE LEADER.
- PRUNE DAMAGED OR DEAD WOOD IMMEDIATELY PRIOR TO PLANTING. NEVER LEAVE LEAVE "Y" CROTCHES OR DOUBLE LEADER.
- TIE TREE SYSTEM, SEE STAKING REQUIREMENTS.
- METAL STAKES. PLACE NEXT TO ROOT BALL AS SHOWN. SPACE EQUIDISTANT AROUND TREE.
- 4" MIN. SPECIFIED MULCH.
- PLANT ROOT BALL 2" HIGHER THAN GRADE AT WHICH TREE GROWS.
- INSTALL WEED CONTROL FABRIC IF TREE IS IN LANDSCAPE BED.
- CONTINUOUS SAUCER, 2" FOR WATER & MULCH.
- CUT & REMOVE BURLAP FROM TOP 1/3 OF BALL.
- SPECIFIED BACKFILL MIXTURE.
- EXISTING UNDISTURBED SUBSOIL.

2 CULTIVATED EDGE DETAIL

SCALE: NIS



Landscape Calculations

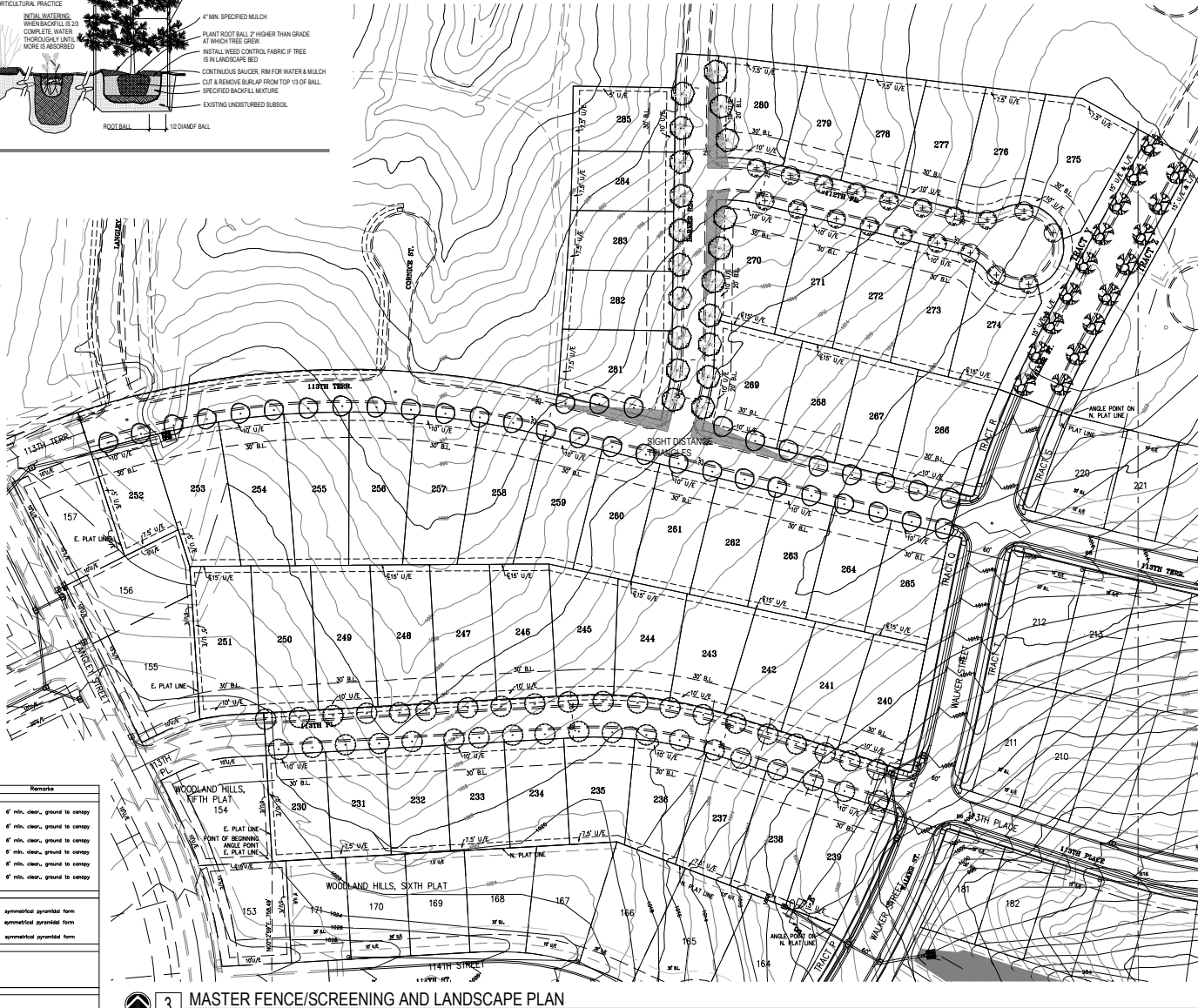
Street Trees: One tree per 40 feet of public or private street frontage. (Totals shown below combine both sides of the road)

112th Place =	730 LF.	19 Trees required.	19 Trees provided.
113th Terr. =	1,482 LF.	37 Trees required.	37 Trees provided.
113th Place =	1,544 LF.	39 Trees required.	39 Trees provided.
Barker Road =	828 LF.	20 Trees required.	20 Trees provided.
Walker St. =	674 LF.	17 Trees required.	17 Trees provided.

SITE DISTANCE TRIANGLES: Triangles are shown on the plan. There are no shrubs located in these areas. Trees shall be limbed up to 6' height for visibility.

STREET TREE PLANTING LOCATION REQUIREMENTS:

- Not located in the site distance triangle.
- 10 feet from box culverts.
- 15 feet in front of regulatory signs.
- 10 feet behind regulatory signs.
- 20 feet from streetlight poles.
- 10 feet from fire hydrants.



Landscape Schedule

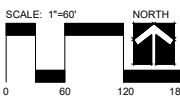
Symbol	Qty.	Botanical Name	Common Name	Min. Root	Min. Size	Color	Remarks
	36	<i>Nyssa sylvatica</i>	Black Tupelo	2.5"	4"	mlk. clear	ground to canopy
	37	<i>Acer x fraxinatum 'Spartan'</i>	FlaRite Sweet Maple	2.5"	4"	mlk. clear	ground to canopy
	39	<i>Quercus laevis</i>	Blackjack	2.5"	4"	mlk. clear	ground to canopy
	18	<i>Prunella x vanille</i>	Louisa Plum Tree	2.5"	4"	mlk. clear	ground to canopy
	17	<i>Quercus rubra</i>	Northern Red Oak	2.5"	4"	mlk. clear	ground to canopy
	5	<i>Zelkova serrata</i>	Zelkova	2.5"	4"	mlk. clear	ground to canopy
	0	<i>Juniperus chinensis 'Telescop'</i>	Halstead Juniper	6" HL			symmetrical pyramidal form
	0	<i>Juniperus chinensis</i>	Eastern Red Cedar	6" HL			symmetrical pyramidal form
	0	<i>Picea canadensis</i>	White Spruce	6" HL			symmetrical pyramidal form
	0	<i>Cercis canadensis</i>	Eastern Redbud	1.5"			
	0	<i>Cornus florida 'Cloud Nine'</i>	Cloud 9 Dogwood				

EXISTING TREES/SHRUBS TO BE PRESERVED



CLIENT:
PRIEB HOMES
651 N Somerset Terrace
Olathe, KS 66062
(913) 780-3399

PROJECT:
WOODLAND HILLS
NORTH
7th Plat
College and Woodland
Road,
Olathe KS



Date: 8.1.2024
Project #: 639
Landscape Plan

L1