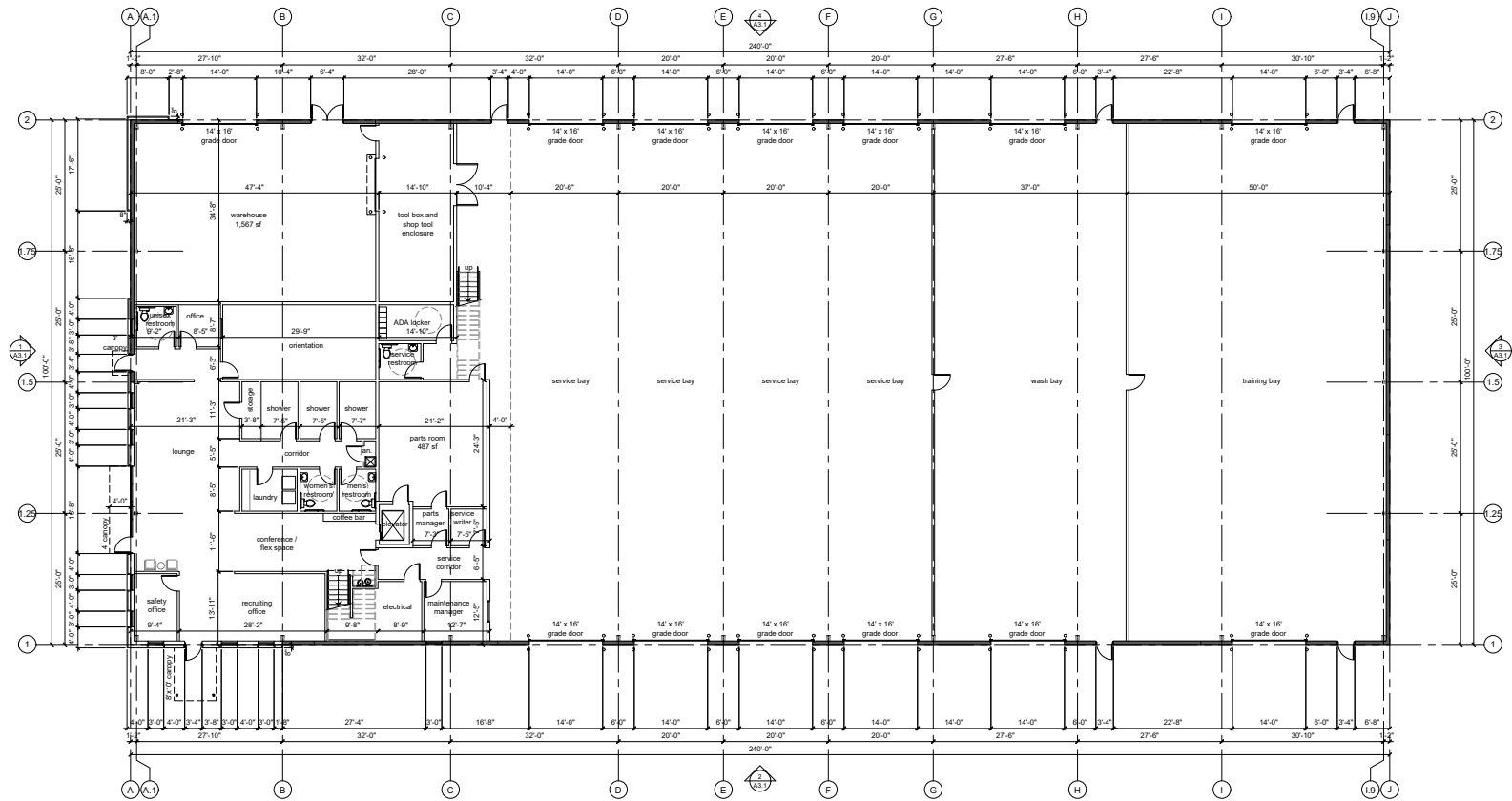


AREA CALCULATIONS:

first floor:	
service:	17,464 sf
office:	4,361 sf
warehouse/shop:	2,178 sf
Total:	24,003 sf
mezzanine:	4,251 sf



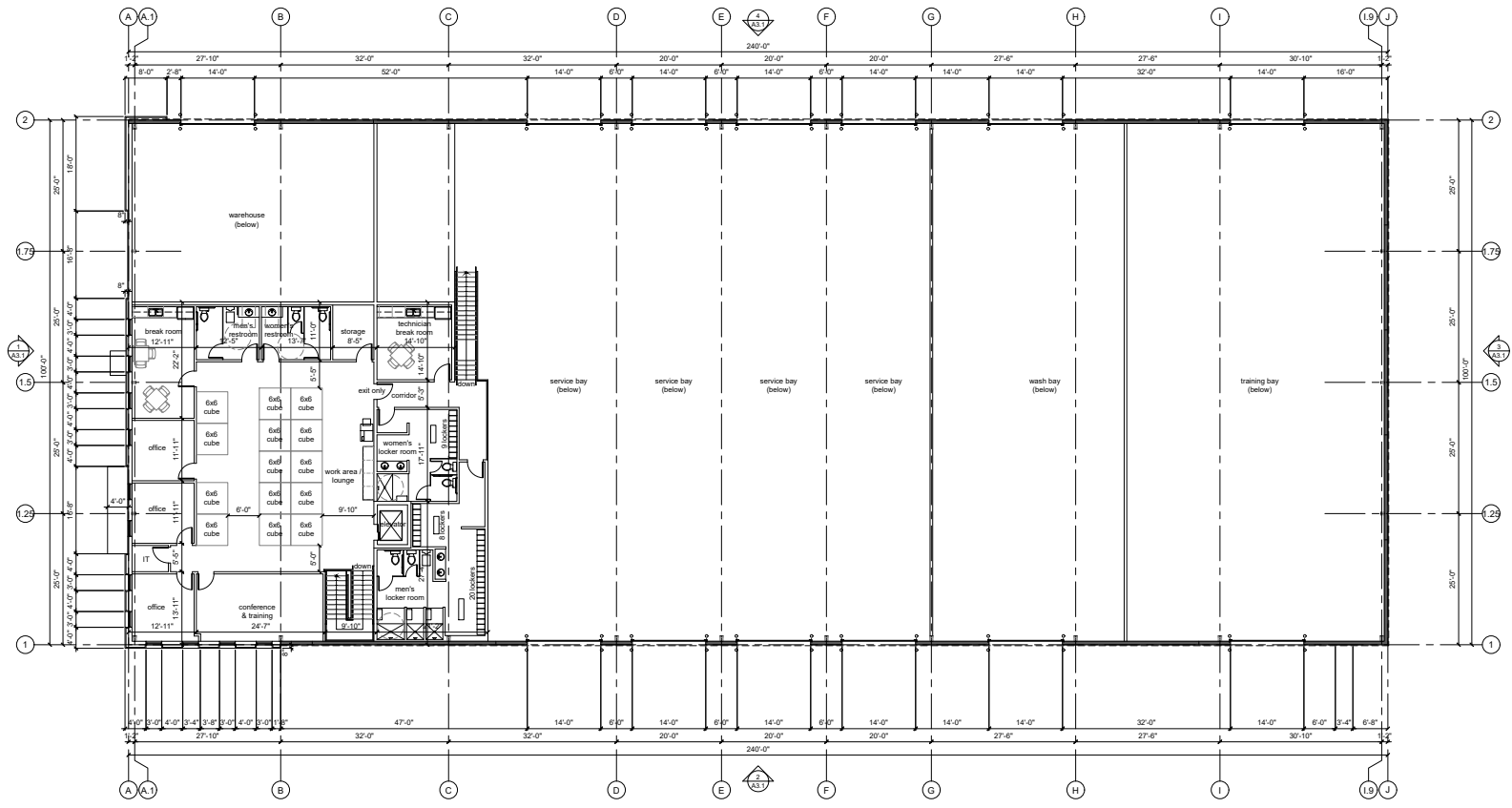
a new development for
Trans-Systems
 Pine Street
 Olathe, Kansas

09.25.2024
 drawn by
 DAE
 checked by
 DAE
 revisors

sheet number
A2.1
 drawing type
 planning
 project number
 24170

1 first floor plan
 scale: 3/32" = 1'-0"





a new development for
Trans-Systems
Pine Street
Olathe, Kansas

09.25.2024
DAE
DAE
DAE
revisions

sheet number
A2.2
drawing type
planning
project number
24170

1 | mezzanine floor plan
scale: 3/32" = 1'-0"

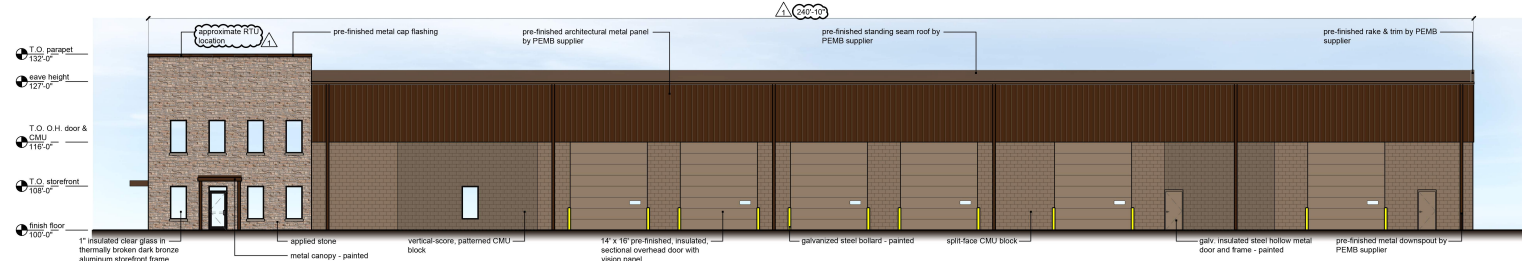




primary facade - west

material	area	% area
stone (class 1)	1,942 sf	62.8%
clear glass (class 1)	349 sf	11.3%
spandrel glass (class 2)	18 sf	0.6%
split face block (class 3)	269 sf	8.7%
metal canopy (class 1)	17 sf	0.5%
metal panel(class 4)	609 sf	18.1%
total wall area (minus HM doors)	3,095 sf	100%
Class 1 & 2 material (required min. 75%)		actual 83.9%
Class 4 material (required max. 25%)		actual 16.1%
primary facade must incorporate 15% glass		
first floor: 1,210 sf		
first floor glass (class 1)	205 sf	16.9%

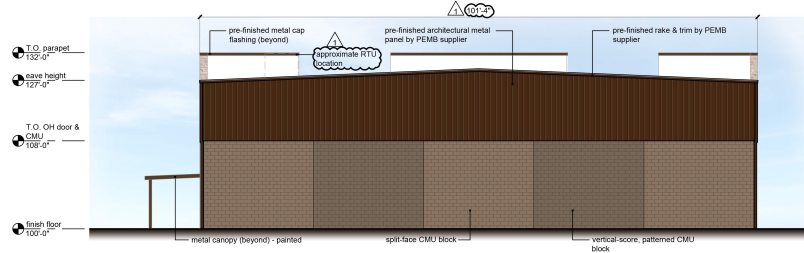
1 west elevation (primary)
scale: 3/32" = 1'-0"



secondary facade - south

material	area	% area
stone (class 1)	808 sf	13.3%
clear glass (class 1)	171 sf	3.3%
patterned CMU block (class 2)	683 sf	13.0%
split-face CMU block (class 3)	1,273 sf	24.2%
metal panel (class 4)	2,392 sf	44.2%
total wall area (minus OH & HM doors)	5,229 sf	100%
Class 1, 2, & 3 material (required min. 50%)		actual 65.8%
Class 4 material (required max. 50%)		actual 44.2%

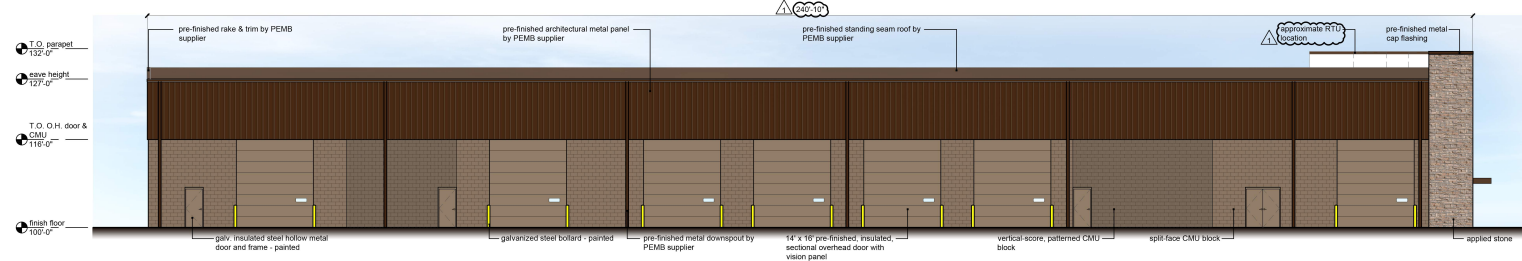
2 south elevation (secondary)
scale: 3/32" = 1'-0"



secondary facade - east

material	area	% area
stone (class 1)	808 sf	13.3%
patterned CMU block (class 2)	640 sf	22.8%
split-face CMU block (class 3)	960 sf	34.2%
metal panel(class 4)	1,209 sf	43.0%
total wall area	2,838 sf	100%
Class 1, 2, & 3 material (required min. 50%)		actual 67.0%
Class 4 material (required max. 50%)		actual 43.0%

3 east elevation (secondary)
scale: 3/32" = 1'-0"



secondary facade - north

material	area	% area
stone (class 1)	298 sf	6.0%
patterned CMU block (class 2)	676 sf	13.1%
split-face CMU block (class 3)	654 sf	12.1%
metal panel (class 4)	2,965 sf	49.8%
total wall area (minus OH & HM doors)	5,147 sf	100%
Class 1, 2, & 3 material (required min. 50%)		actual 30.2%
Class 4 material (required max. 50%)		actual 49.8%

4 north elevation (secondary)
scale: 3/32" = 1'-0"

a new development for
Trans-Systems
Pine Street
Olathe, Kansas

09.25.2024
DAE
revisions
10.21.2024

sheet number
A3.1
drawing type
planning
project number
24170