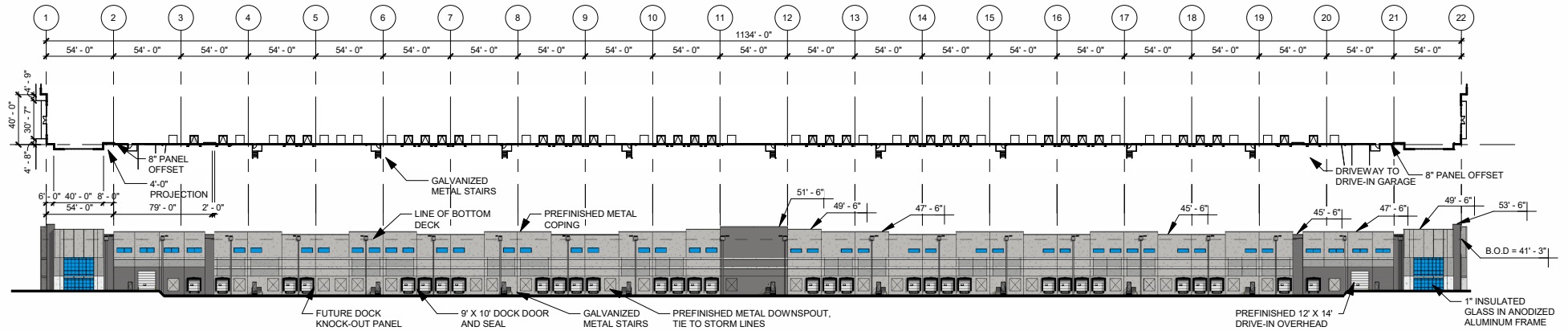


EAST / WEST ELEVATION

1" = 40'-0"



NORTH / SOUTH ELEVATION

1" = 80'-0"

EAST / WEST ELEVATION MATERIAL CALCULATIONS:

WALL AREA: 25,196 SF.
(ONE SIDE - NOT INCLUDING PARAPETS)

CLASS 1 AND 2 MATERIALS - CLEAR GLAZING AND CONCRETE WITH FORM LINER REVEALS:
GLAZING AREA (CLASS 1): 2,897 SF 11.5%
CONCRETE (CLASS 2): 7,476 SF 29.7%
TOTAL: 10,373 SF 41.2%

CLASS 3 AND 4 MATERIALS - TEXTURE PAINTED CONCRETE AND METAL:
CONCRETE (CLASS 3): 14,642 SF 58.1%
METAL (CLASS 4): 181 SF 0.7%
TOTAL: 14,823 SF 58.8%

NORTH / SOUTH ELEVATION MATERIAL CALCULATIONS:

WALL AREA: 46,778 SF. (ONE SIDE - NOT INCLUDING PARAPETS OR UNDER-FLOOR FOUNDATION WALLS)

CLASS 1 AND 2 MATERIALS - CLEAR GLAZING AND CONCRETE WITH FORM LINER REVEALS:
GLAZING AREA (CLASS 1): 2,837 SF 6.1%
CONCRETE (CLASS 2): 3,882 SF 8.3%
TOTAL: 6,719 SF 14.4%

CLASS 3 AND 4 MATERIALS - TEXTURE PAINTED CONCRETE AND METAL:
CONCRETE (CLASS 3): 36,519 SF 78.0%
METAL (CLASS 4): 3,540 SF 7.6%
TOTAL: 40,059 SF 85.6%

EXTERIOR MATERIALS AND FINISHES

PRE-ENGINEERED METAL CANOPY:
GRAY (TO MATCH COLOR 3).

STOREFRONT:
CLEAR ANODIZED ALUMINUM FRAMES.

GLASS:
1" INSULATED, LOW E GLASS W/ AGAS FILL AND SOLORBAN 60 (2) CLEAR (EQUAL TO U-VALUE .29).

HOLLOW METAL DOORS:
PAINTED TO MATCH ADJACENT COLOR WALL.

OVERHEAD DOORS:
MANUFACTURED STANDARD PRE-FINISHED COLOR.

ALUMINUM COPING:
FIRESTONE SLATE GRAY (TO MATCH COLOR 1).

CAULK:
PAINTED OR PREMIX COLOR TO MATCH BUILDING ADJACENT COLOR.

SCUPPERS AND DOWNSPOUTS:
REFINISHED TO MATCH COLOR 4.

COLOR SCHEDULE:

CONCRETE WALL PANEL:
COLOR 1: SW7688 MARCH WIND

COLOR 2: SW7673 PEWTER CAST

COLOR 3: SW7666 FLEUR DE SEL

COLOR 4: SW7674 PEPPERCORN



Building #5

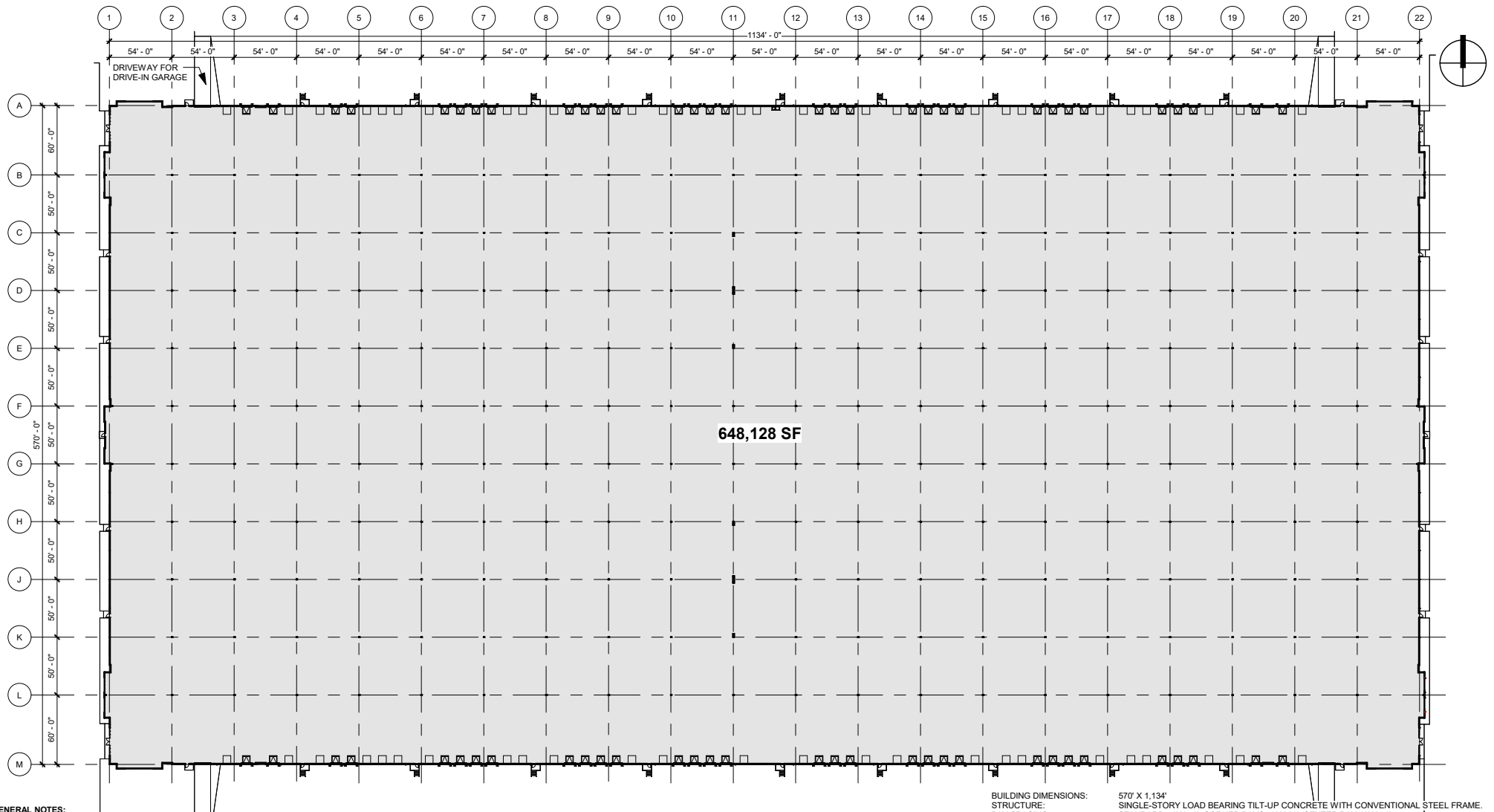
155th Place
Olathe, Kansas 66061

I-35 LOGISTICS
ELEVATION
SCALE: As
indicated

18125450.00

04/13/25





- GENERAL NOTES:**
1. ALL EXTERIOR MOUNTED, ROOF TOP BUILDING HVAC AND MECHANICAL EQUIPMENT, VENTS, PIPING, ROOF ACCESS LADDERS AND UTILITY METERS MUST BE LOCATED OUT OF VIEW, OR OTHERWISE SCREENED, FROM PUBLIC VIEW FROM ALL ADJACENT STREETS AND RESIDENTIAL PROPERTIES.
 2. ALL ROOF TOP EQUIPMENT MUST BE SCREENED FROM PUBLIC VIEW WITH AN ARCHITECTURAL TREATMENT WHICH IS COMPATIBLE WITH THE BUILDING ARCHITECTURE AND INTEGRAL TO THE OVERALL APPEARANCE OF THE BUILDING. (NOTE FOR THE PURPOSE OF THIS CHAPTER, THE PHRASE "ARCHITECTURAL TREATMENT COMPATIBLE WITH THE BUILDING ARCHITECTURE" DOES NOT INCLUDE PAINTED OR PREFINISHED ROOF TOP EQUIPMENT.)
 3. EXTERIOR GROUND MOUNTED OR BUILDING MOUNTED EQUIPMENT INCLUDING, BUT NOT LIMITED TO, MECHANICAL EQUIPMENT, UTILITIES METER BANKS AND COOLERS MUST BE SCREENED FROM PUBLIC VIEW WITH THREE SIDED LANDSCAPING OR WITH AN ARCHITECTURAL TREATMENT COMPATIBLE WITH BUILDING ARCHITECTURE.

BUILDING DIMENSIONS: 570' X 1,134'
STRUCTURE: SINGLE-STORY LOAD BEARING TILT-UP CONCRETE WITH CONVENTIONAL STEEL FRAME.
BAY SPACING: STANDARD 54' X 50', CORNER BAYS 50' X 60', CENTER BAY 42' X 50'
CLEAR HEIGHT: 36' FROM 6" INSIDE FIRM COLUMN LINE. 40' ALTERNATE CLEAR HEIGHT.
AUTO PARKING: 306 AUTO STALLS (ADA INCLUDED).
TRAILER PARKING: 173 TRAILER STALLS.
LOADING W/ 9'X10' MANUAL: 64 PROVIDED (1 DOCK PER 10,000 SF)
DRIVE-IN W/ 14' X 16' MOTOR: 4
LOADING W/O LIFTER: 18
FUTURE DOCK PUNCH-OUT: 26

Building #5

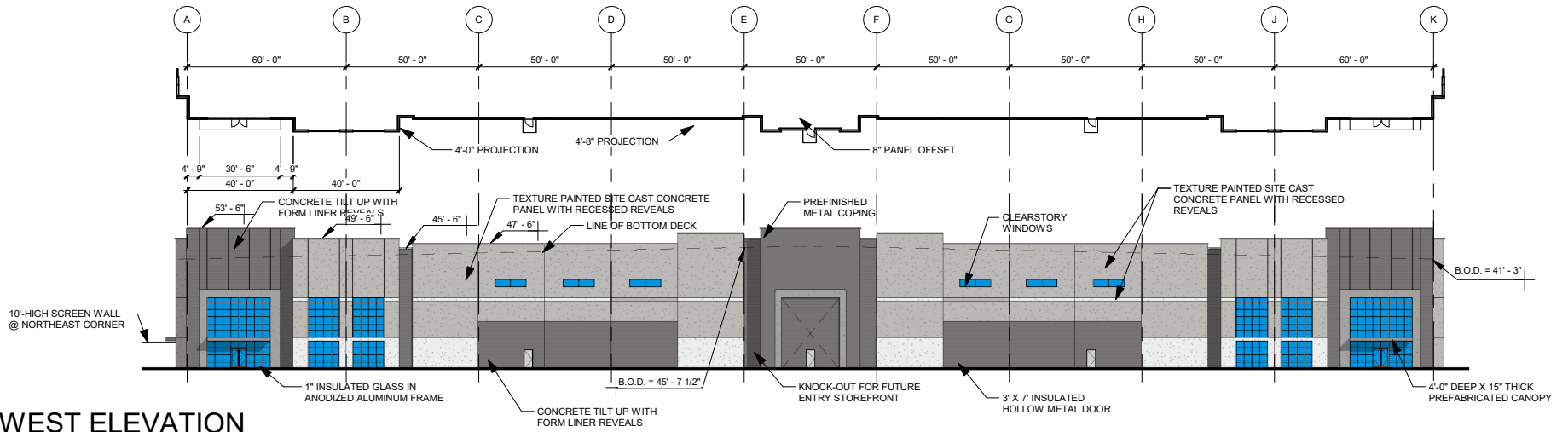
155th Place
 Olathe, Kansas 66061

I-35 LOGISTICS
 FLOOR PLAN
 SCALE: 1" = 80'-0"

18125450.00

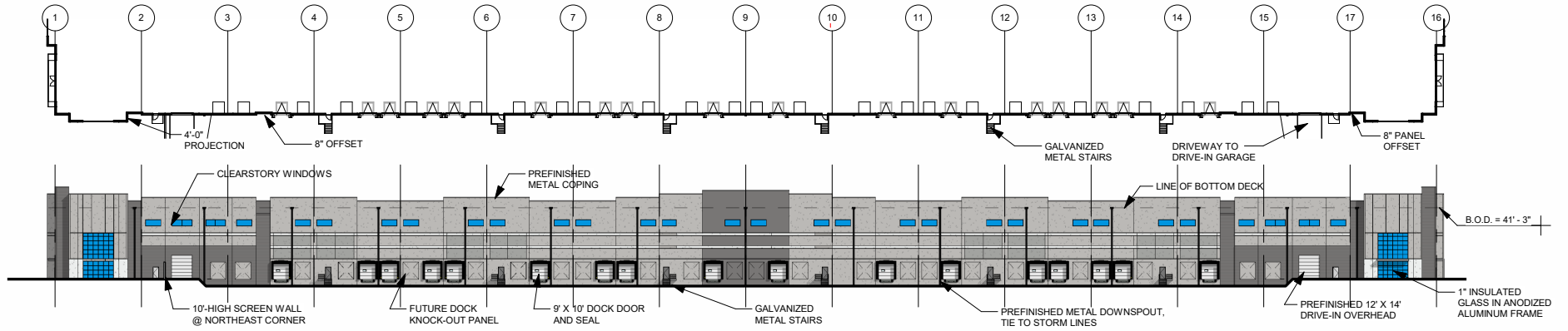
04/13/2026





EAST / WEST ELEVATION

1" = 40'-0"



NORTH / SOUTH ELEVATION

1" = 60'-0"

EAST / WEST ELEVATION MATERIAL CALCULATIONS:

WALL AREA: 20,530 SF.
(ONE SIDE - NOT INCLUDING PARAPETS)

CLASS 1 AND 2 MATERIALS - CLEAR GLAZING AND CONCRETE WITH FORM LINER REVEALS:	
GLAZING AREA (CLASS 1):	2,636 SF 12.9%
CONCRETE (CLASS 2):	5,694 SF 27.7%
TOTAL:	8,330 SF 40.6%
CLASS 3 AND 4 MATERIALS - TEXTURE PAINTED CONCRETE AND METAL:	
CONCRETE (CLASS 3):	12,069 SF 58.8%
METAL (CLASS 4):	131 SF 0.6%
TOTAL:	12,200 SF 59.4%

NORTH / SOUTH ELEVATION MATERIAL CALCULATIONS:

WALL AREA: 33,002 SF. (ONE SIDE - NOT INCLUDING PARAPETS OR UNDER-FLOOR FOUNDATION WALLS)

CLASS 1 AND 2 MATERIALS - CLEAR GLAZING AND CONCRETE WITH FORM LINER REVEALS:	
GLAZING AREA (CLASS 1):	1,988 SF 6.0%
CONCRETE (CLASS 2):	4,574 SF 13.9%
TOTAL:	6,562 SF 19.9%
CLASS 3 AND 4 MATERIALS - TEXTURE PAINTED CONCRETE AND METAL:	
CONCRETE (CLASS 3):	24,335 SF 73.7%
METAL (CLASS 4):	2,105 SF 6.4%
TOTAL:	26,440 SF 80.1%

EXTERIOR MATERIALS AND FINISHES

PRE-ENGINEERED METAL CANOPY:
GRAY (TO MATCH COLOR 3).

STOREFRONT:
CLEAR ANODIZED ALUMINUM FRAMES.

GLASS:
1" INSULATED, LOW E GLASS W/ AGAS FILL AND SOLORBAN 60 (2) CLEAR (EQUAL TO U-VALUE .29).

HOLLOW METAL DOORS:
PAINTED TO MATCH ADJACENT COLOR WALL.

OVERHEAD DOORS:

MANUFACTURED STANDARD PRE-FINISHED COLOR.

ALUMINUM COPING:
FIRESTONE SLATE GRAY (TO MATCH COLOR 1).

CAULK:
PAINTED OR PREMIX COLOR TO MATCH GLASS ADJACENT COLOR.

SCUPPERS AND DOWNSPOUTS:
REFINISHED TO MATCH COLOR 4.

COLOR SCHEDULE:

CONCRETE WALL PANEL:
COLOR 1: SW7688 MARCH WIND

COLOR 2: SW7673 PEWTER CAST

COLOR 3: SW7666 FLEUR DE SEL

COLOR 4: SW7674 PEPPERCORN

Building #6

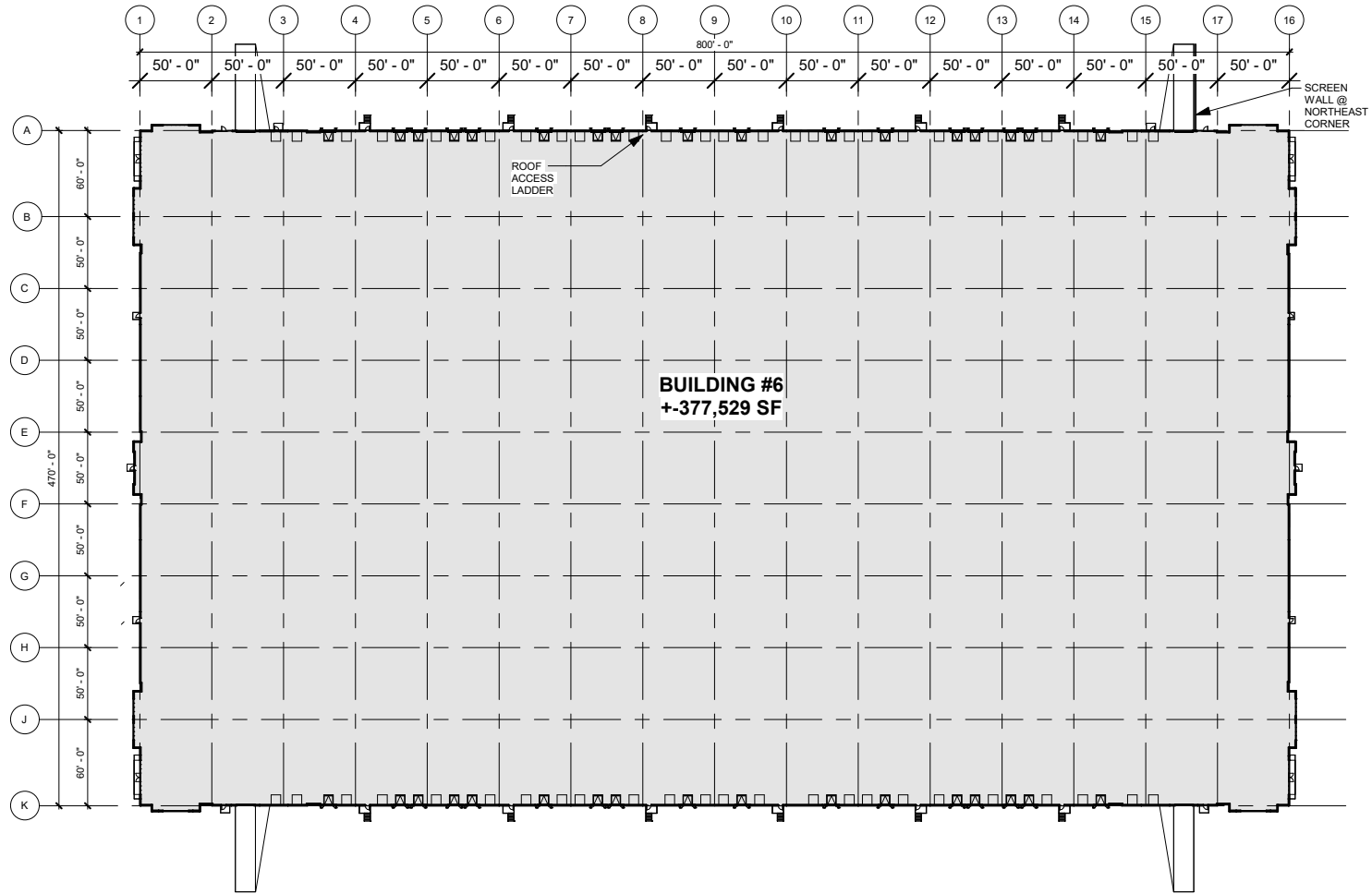
155th Place
Olathe, Kansas 66061

I-35 LOGISTICS
ELEVATION
SCALE: As
indicated

18125451.00

04/27/26





GENERAL NOTES:

1. ALL EXTERIOR MOUNTED, ROOF TOP BUILDING HVAC AND MECHANICAL EQUIPMENT, VENTS, PIPING, ROOF ACCESS LADDERS AND UTILITY METERS MUST BE LOCATED OUT OF VIEW, OR OTHERWISE SCREENED, FROM PUBLIC VIEW FROM ALL ADJACENT STREETS AND RESIDENTIAL PROPERTIES.
2. ALL ROOF TOP EQUIPMENT MUST BE SCREENED FROM PUBLIC VIEW WITH AN ARCHITECTURAL TREATMENT WHICH IS COMPATIBLE WITH THE BUILDING ARCHITECTURAL AND INTEGRAL TO THE OVERALL APPEARANCE OF THE BUILDING. (NOTE FOR THE PURPOSE OF THIS CHAPTER, THE PHRASE "ARCHITECTURAL TREATMENT COMPATIBLE WITH THE BUILDING ARCHITECTURE" DOES NOT INCLUDE PAINTED OR PREFINISHED ROOF TOP EQUIPMENT.)
3. EXTERIOR GROUND MOUNTED OR BUILDING MOUNTED EQUIPMENT INCLUDING, BUT NOT LIMITED TO, MECHANICAL EQUIPMENT, UTILITIES METER BANKS AND COOLERS MUST BE SCREENED FROM PUBLIC VIEW WITH THREE SIDED LANDSCAPING OR WITH AN ARCHITECTURAL TREATMENT COMPATIBLE WITH BUILDING ARCHITECTURE.

BUILDING DIMENSIONS:	420' X 800'
STRUCTURE:	SINGLE-STORY LOAD BEARING TILT-UP CONCRETE WITH CONVENTIONAL STEEL FRAME.
BAY SPACING:	STANDARD 50' X 50'. CORNER BAYS 50' X 60', CENTER BAY 50' X 40'
CLEAR HEIGHT:	36' FROM 6" INSIDE FIRM COLUMN LINE. 40' ALTERNATE CLEAR HEIGHT.
AUTO PARKING:	172 AUTO STALLS (ADA INCLUDED).
TRAILER PARKING:	60 TRAILER STALLS.
LOADING W/ 9'X10' MANUAL:	34 PROVIDED (1 DOCK PER 10,000 SF)
DRIVE-IN W/ 14' X 16' MOTOR:	4
LOADING W/O LIFTER:	18
FUTURE DOCK PUNCH-OUT:	15

Building #6

155th Place
Olathe, Kansas 66061

I-35 LOGISTICS
FLOOR PLAN
SCALE: 1" = 80'-0"

18125451.00

04/13/26



