






### LEGEND

— PL —	PROPERTY LINE
- - LL - -	LOT LINE
- - R/W - -	RIGHT-OF-WAY
=====	2' CURB & GUTTER
=====	6" CURB
	PROPOSED BUILDING
	ASPHALT PAVEMENT (CAR PARKING AREAS)
	ASPHALT PAVEMENT (CAR DRIVE LANES)
	CONCRETE PAVEMENT
	CONCRETE SIDEWALK



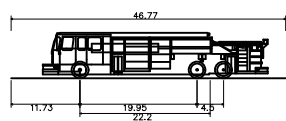
**TRUCK TURN PLAN**  
EARTH CONTACT PRODUCTS  
15680 KEELER TERRACE  
OLATHE, JOHNSON COUNTY, KANSAS

**STANLEY ENGINEERING, INC.**  
1250 N. Winchester  
Chula Vista 61004  
(619) 391-7755  
Fax (619) 391-6644  
[www.stanleyengineering.com](http://www.stanleyengineering.com)

**PHOTOGRAPHY**  
**GRAPHICS**  
**DESIGN**

[illegible]

SHEET  
C102



46.770ft  
8.167ft  
7.745ft  
0.656ft  
8.167ft  
5.00s  
45.00°

- 

**TRUCK TURN PLAN**  
EARTH CONTACT PRODUCTS  
15680 KEELER TERRACE  
OLATHE, JOHNSON COUNTY, KANSAS

**ST. HELMS ENGINEERING, INC.**  
2520 N. Winchester  
Chula Vista 61004  
619/441-7755  
Fax 619/441-7755  
www.sthelmsengineering.com



PROJECT NO.	No.	Date	Revised:	By	App.
			REVISED PER STAFF COMMENTS	ASB	DAF
PROJECT NO. 250602 INTERESTED-07-25-2021 DATE OF AUTHORIZATION 07-25-2021 BY: ASB DATE OF AUTHORIZATION 07-25-2021	1.	06-22-2025			

SHEET  
C103









# PLANT SCHEDULE

## EVERGREEN TREES



1

## EVERGREEN SHRUBS



138

## ORNAMENTAL DECIDUOUS



11

## UPRIGHT EVERGREEN SCREENING SHRUBS



9

## STREET TREES



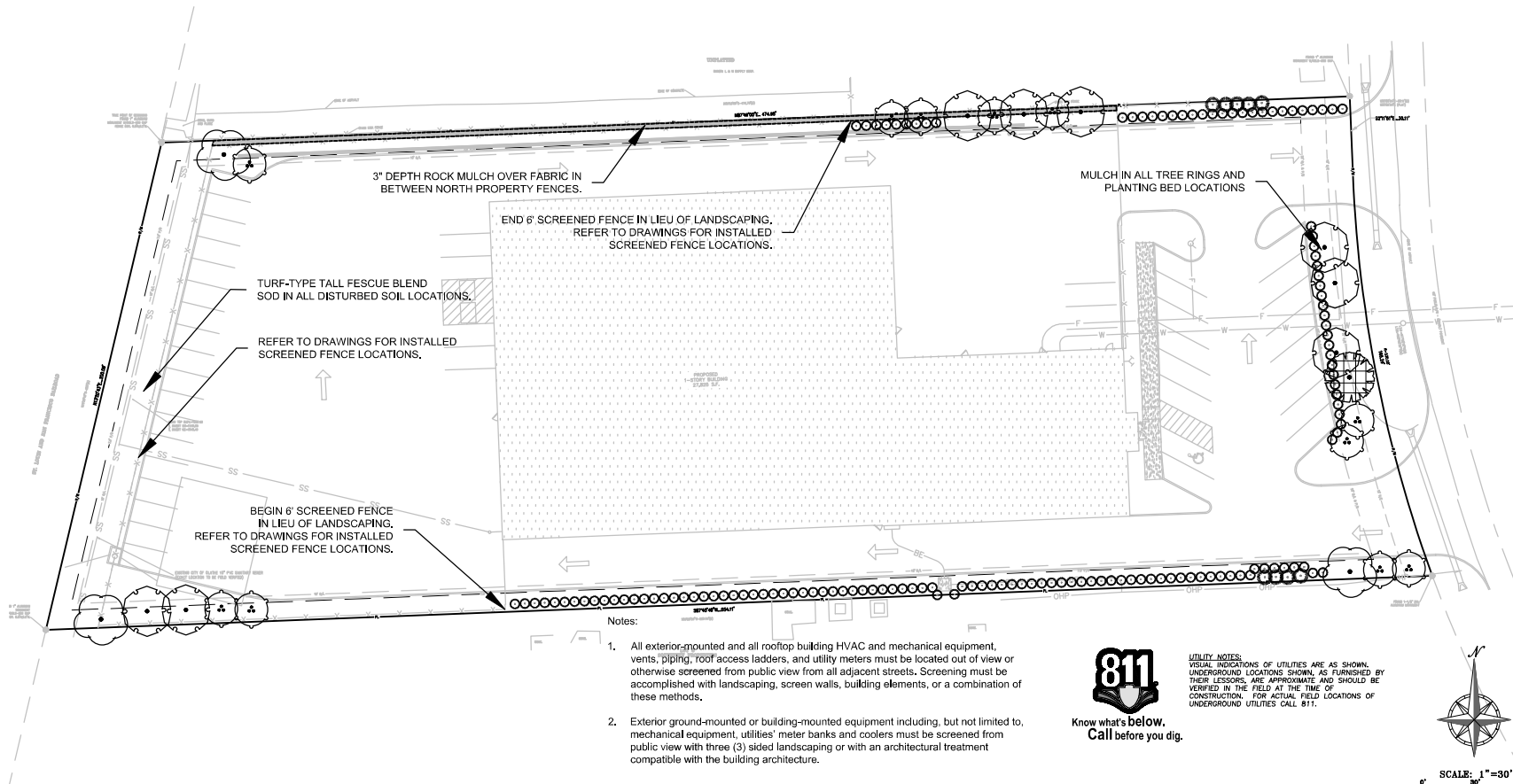
6



3

Buffer Details												
PROPERTY LINE PORTION	DESCRIPTION	Length	Proposed Zoning	Adjoining Zoning	Buffer Type	Min. Buffer Width (in feet)	Deciduous Shade Trees	Ornamental Trees	Evergreen Trees	Shrubs and Ornamental Grasses		Constructed Features§
A – Primary St.	East Facing S. Keeler Terr.	165.24	M–2	STREET	Refer to Parking & Vehicle Screen Requirements & Nonresidential Landscape Area Frontage Requirement							
B	South facing	554.11	M–2	M–2	1	6*	6	6	6	111		6' Ht. Fence per Civil Dws in lieu of plantings.
C	West facing railroad	200.08	M–2	M–2	1	10	3	3	3	41		6' Ht. Fence per Civil Dws in lieu of plantings.
D	North Facing	474.95	M–2	M–2	1	10	5	5	5	95		6' Ht. Fence per Civil Dws in lieu of plantings.
					TOTAL		14	14	14	247		
* Reduction in Required Buffer due to existing buffer on abutting property per 180.30.130.J.2												
§ A double row of evergreen trees may be substituted for a screening wall, but may not be counted toward minimum requirements for plants.												

18.30.130.3L Nonresidential Landscape Area Frontage Requirements								
Street Name	Road Type	Use	Use Across Street	Res / Nonres across Str.?	Frontage Length	Minimum Buffer Width	Shade Trees Required	Ornamental Trees Req.
S. Keeler Terrace		M-2	M-2	Nonresidential Use	165.24	10	4	2



### Notes:

1. All exterior-mounted and all rooftop building HVAC and mechanical equipment, vents, piping, roof access ladders, and utility meters must be located out of view or otherwise screened from public view from all adjacent streets. Screening must be accomplished with landscaping, screen walls, building elements, or a combination of these methods.
2. Exterior ground-mounted or building-mounted equipment including, but not limited to, mechanical equipment, utilities' meter banks and coolers must be screened from public view with three (3) sided landscaping or with an architectural treatment compatible with the building architecture.



Know what's below.  
Call before you dig.

UTILITY NOTES:  
VISUAL INDICATIONS OF UTILITIES ARE AS SHOWN.  
UNDERGROUND LOCATIONS SHOWN, AS FURNISHED BY  
THEIR LESSORS, ARE APPROXIMATE AND SHOULD BE  
VERIFIED IN THE FIELD AT THE TIME OF  
CONSTRUCTION. FOR ACTUAL FIELD LOCATIONS OF  
UNDERGROUND UTILITIES CALL 811.



SCALE: 1"=30'

PROJECT: 15680 KEELER TERRACE  
DATE: 07-27-2020  
DRAWN BY: J. L. LAM  
CHECKED BY: J. L. LAM  
APPROVED BY: J. L. LAM  
PROJECT NO.: 200002



LANDSCAPE PLAN  
EARTH CONTACT PRODUCTS  
15680 KEELER TERRACE  
OLATHE, JOHNSON COUNTY, KANSAS

PROJECT NO.	DATE	BY	CHK
200002	07-27-2020	J. L. LAM	J. L. LAM
15680 KEELER TERRACE			
LANDSCAPE PLAN			
DATE: 07-27-2020			
DRAWN BY: J. L. LAM			
CHECKED BY: J. L. LAM			
APPROVED BY: J. L. LAM			
PROJECT NO.: 200002			

SHEET  
L100