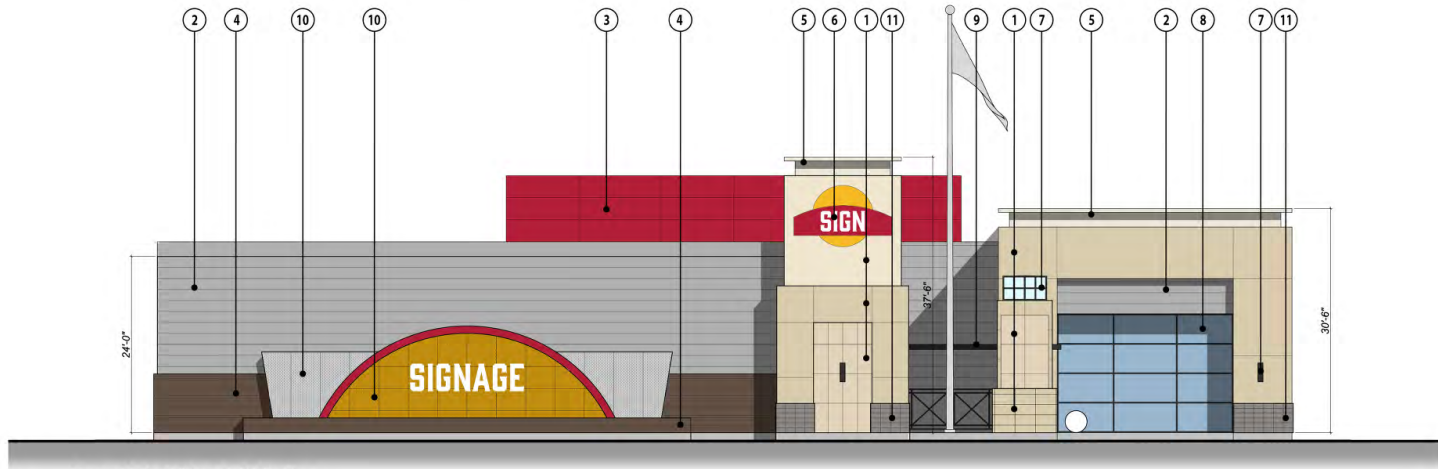
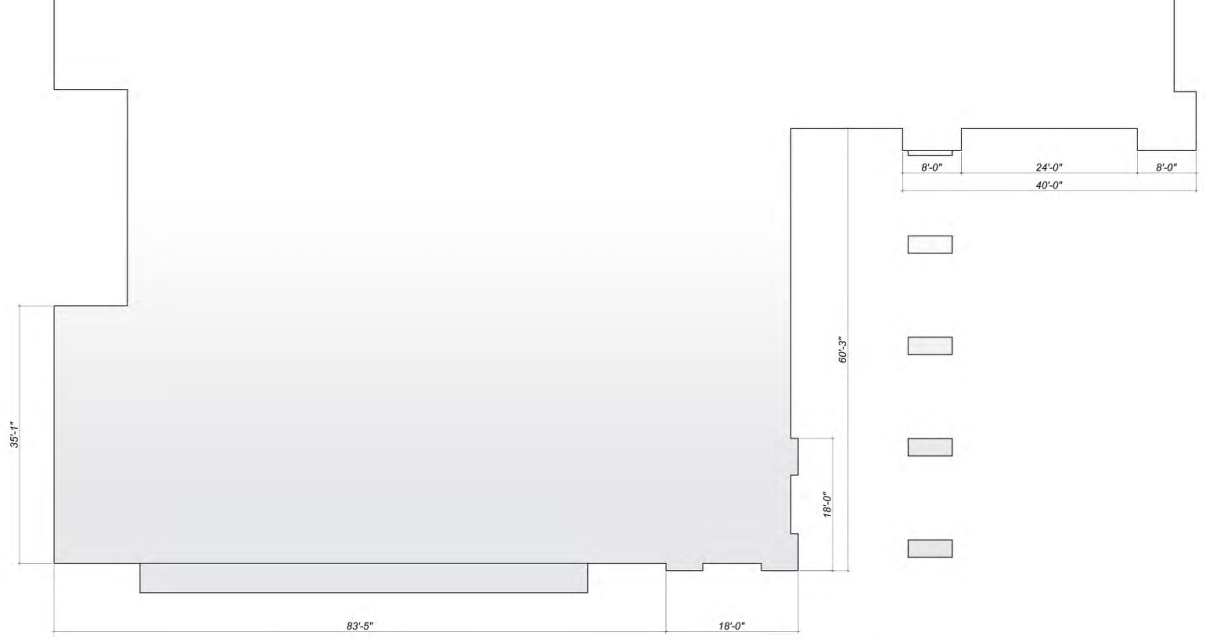


Proposed Arena - Front Elevation

Exterior Materials

- ① Illuminated LED Signage
- ② Prefinished Exterior Metal Panel System (Type A)
- ③ Simulated Wood Veneer
- ④ Simulated Stone Veneer
- ⑤ Aluminum Curtain Wall System with Clear Low E Glazing
- ⑥ Prefinished Metal Canopy System
- ⑦ Internally Illuminated Signage
- ⑧ Prefinished Metal Coping
- ⑨ LED Video Screen



Proposed Entry Building - South Elevation

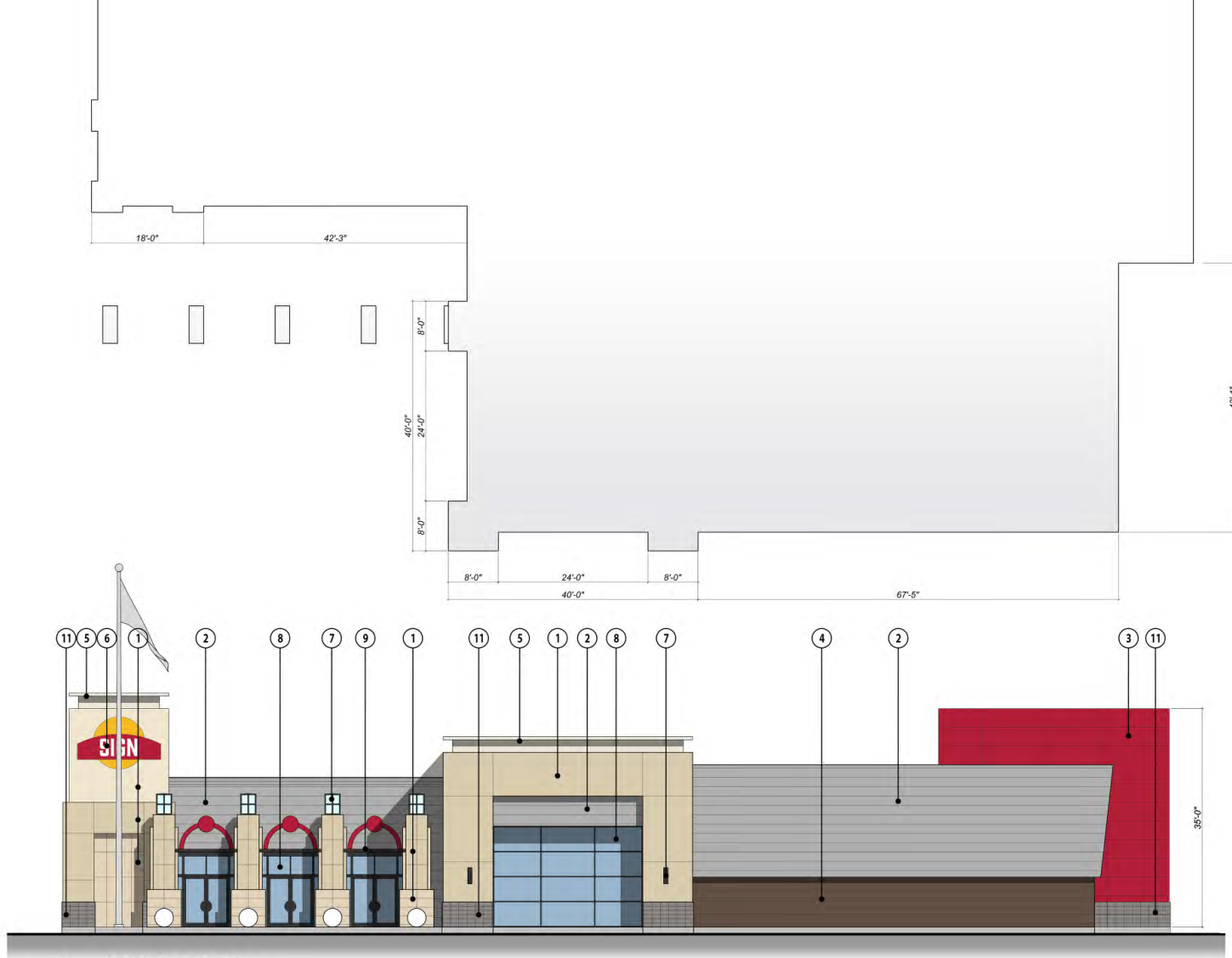
Exterior Materials

- ① Exterior Insulated Finish System
- ② Prefinished Exterior Metal Panel System (Type A)
- ③ Prefinished Exterior Metal Panel System (Type B)
- ④ Brick Masonry
- ⑤ Prefinished Metal Coping
- ⑥ Internally Illuminated Signage
- ⑦ Wall-Mounted Exterior Light
- ⑧ Aluminum Storefront System with Clear Low-E Glazing
- ⑨ Prefinished Metal Canopy System
- ⑩ Perforated Metal Panel
- ⑪ Architectural Masonry Unit

Michael's Wonder World - Entrance Building
119th & Renner - Entertainment and Mixed-Use Development

Olathe, Kansas
 LA# 23093 - 10.22.2024





Proposed Entry Building - East Elevation

Exterior Materials

- | | |
|--|---|
| ① Exterior Insulated Finish System | ⑦ Wall-Mounted Exterior Light |
| ② Prefinished Exterior Metal Panel System (Type A) | ⑧ Aluminum Storefront System with Clear Low-E Glazing |
| ③ Prefinished Exterior Metal Panel System (Type B) | ⑨ Prefinished Metal Canopy System |
| ④ Brick Masonry | ⑩ Perforated Metal Panel |
| ⑤ Prefinished Metal Coping | ⑪ Architectural Masonry Unit |
| ⑥ Internally Illuminated Signage | |

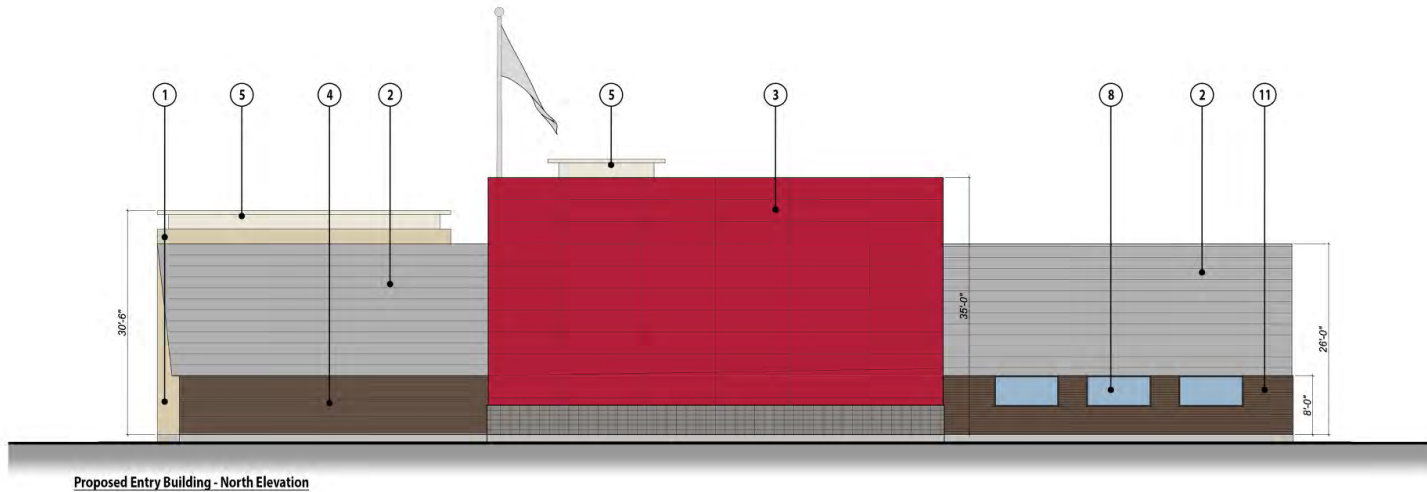
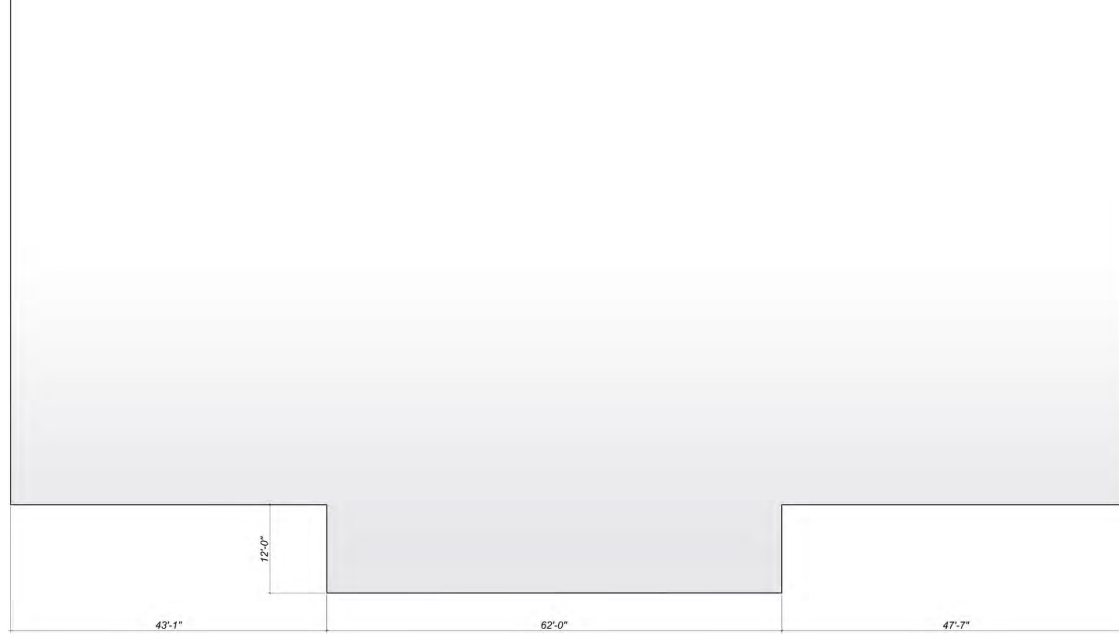
Michael's Wonder World - Entrance Building

119th & Renner - Entertainment and Mixed-Use Development

Olathe, Kansas

LA# 23093 - 10.22.2024





Proposed Entry Building - North Elevation

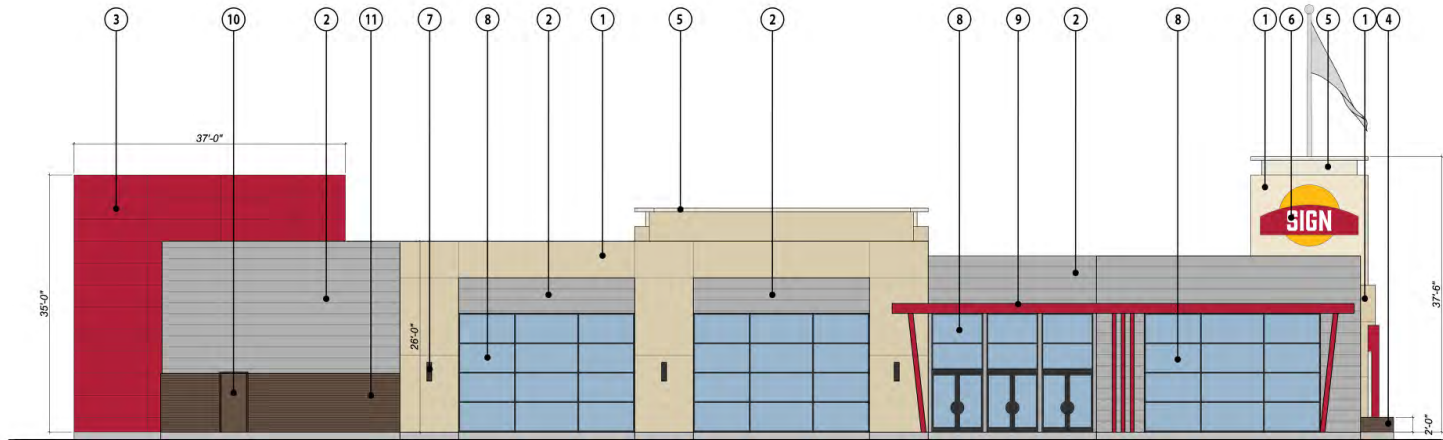
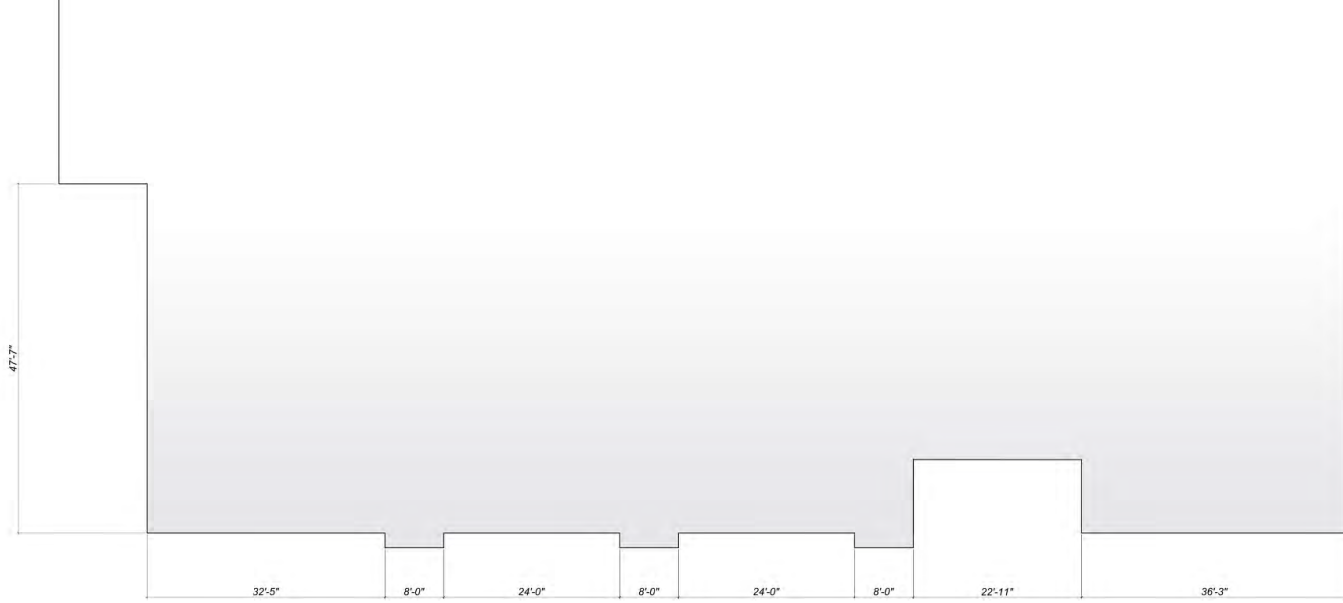
Exterior Materials

- | | |
|--|---|
| ① Exterior Insulated Finish System | ⑦ Wall-Mounted Exterior Light |
| ② Prefinished Exterior Metal Panel System (Type A) | ⑧ Aluminum Storefront System with Clear Low-E Glazing |
| ③ Prefinished Exterior Metal Panel System (Type B) | ⑨ Prefinished Metal Canopy System |
| ④ Brick Masonry | ⑩ Flush-Hollow Core Steel Door |
| ⑤ Prefinished Metal Coping | ⑪ Architectural Masonry Unit |
| ⑥ Internally Illuminated Signage | |

Michael's Wonder World - Entrance Building
119th & Renner - Entertainment and Mixed-Use Development

Olathe, Kansas
 LA# 23093 - 10.22.2024





Proposed Entry Building - West Elevation

Exterior Materials

- | | |
|--|---|
| ① Exterior Insulated Finish System | ⑦ Wall-Mounted Exterior Light |
| ② Prefinished Exterior Metal Panel System (Type A) | ⑧ Aluminum Storefront System with Clear Low-E Glazing |
| ③ Prefinished Exterior Metal Panel System (Type B) | ⑨ Prefinished Metal Canopy System |
| ④ Brick Masonry | ⑩ Flush-Hollow Core Steel Door |
| ⑤ Prefinished Metal Coping | ⑪ Architectural Masonry Unit |
| ⑥ Internally Illuminated Signage | |

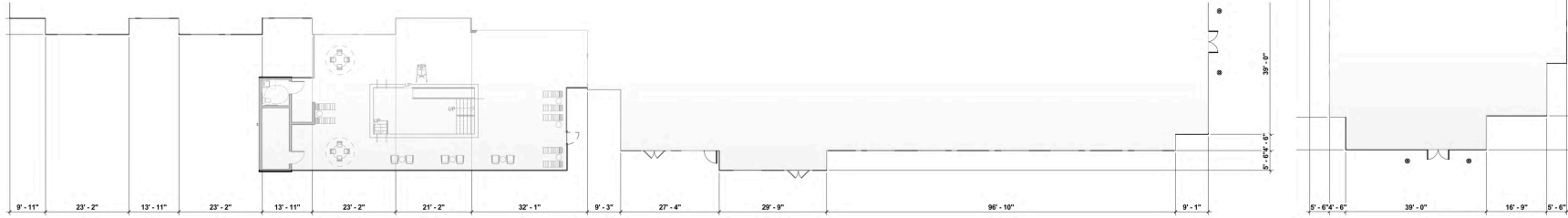
Michael's Wonder World - Entrance Building

119th & Renner - Entertainment and Mixed-Use Development

Olathe, Kansas

LA# 23093 - 10.22.2024





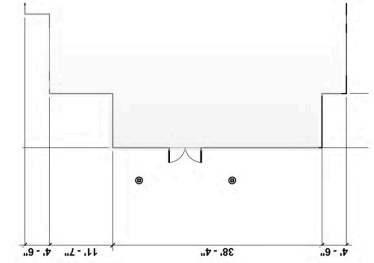
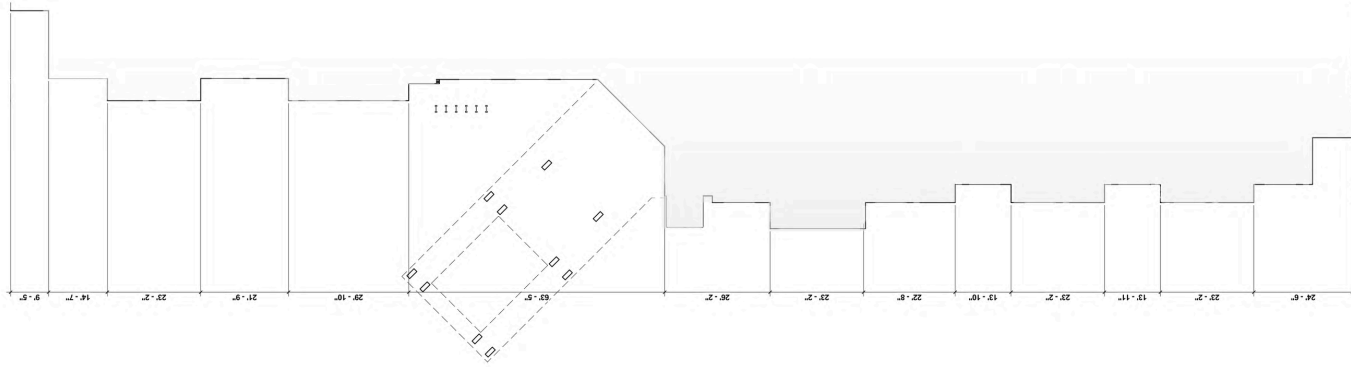
Proposed Hotel - Rear Elevation



Proposed Hotel - Right Elevation

Exterior Materials

- | | | |
|---|---|----------------------------------|
| ① Simulated Wood Cladding System | ⑥ Prefinished VTAC Vent | ⑪ Exterior Glazed Elevator Shaft |
| ② Exterior Insulated Finish System | ⑦ Flush-Hollow Core Steel Door | ⑫ Architectural Masonry Unit |
| ③ Aluminum Storefront System with Clear Low-E Glazing | ⑧ Internally Illuminated Signage | ⑬ Brick Masonry |
| ④ Prefinished Metal Coping | ⑨ Wall-Mounted Exterior Light | |
| ⑤ Prefinished Metal Canopy System | ⑩ Prefinished Exterior Metal Panel System | |



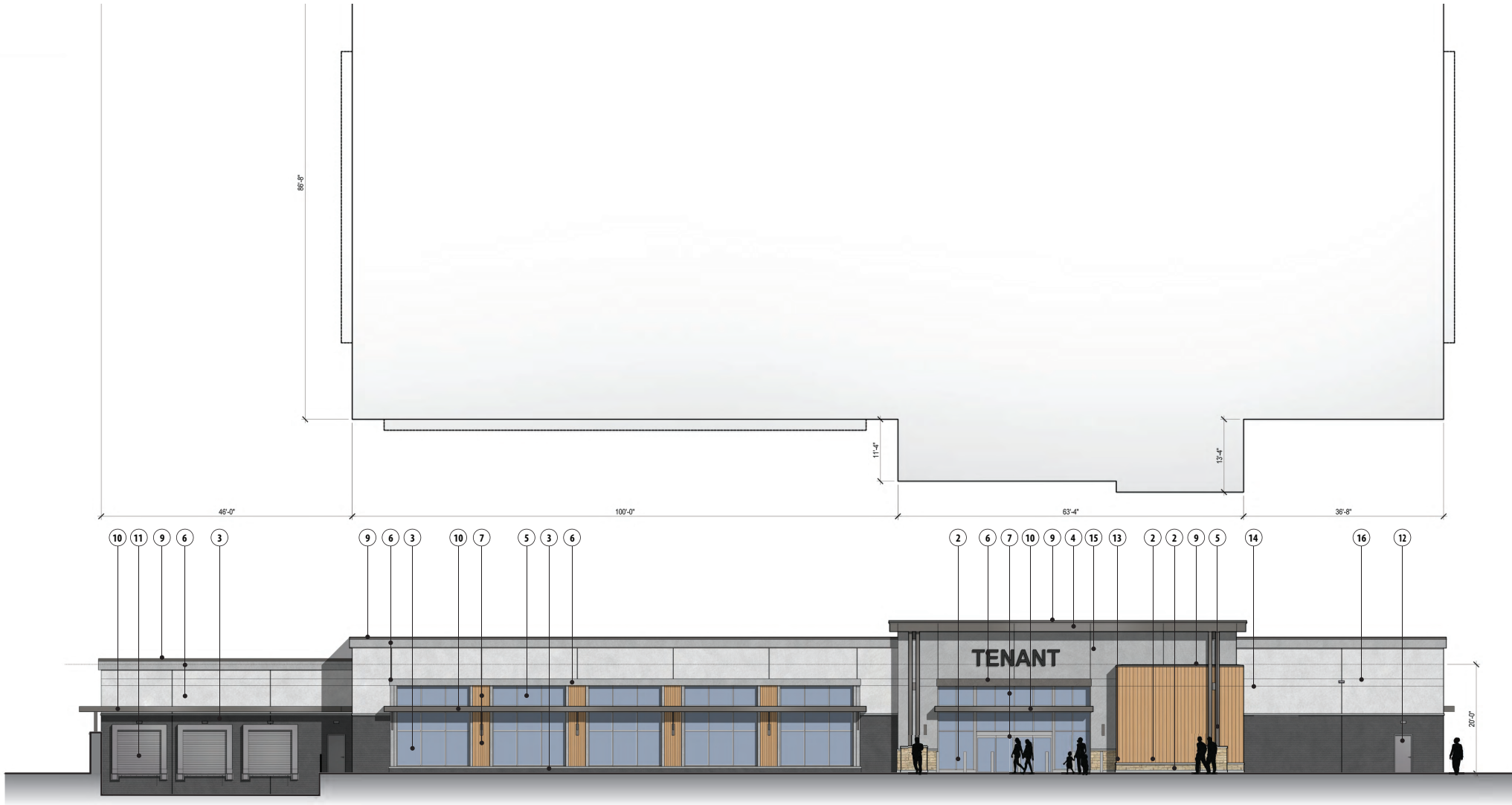
Proposed Hotel - Front Elevation



Proposed Hotel - Left Elevation

Exterior Materials

- ① Simulated Wood Cladding System
- ② Exterior Insulated Finish System
- ③ Aluminum Storefront System with Clear Low-E Glazing
- ④ Prefinished Metal Coping
- ⑤ Prefinished Metal Canopy System
- ⑥ Prefinished VTAC Vent
- ⑦ Flush-Hollow Core Steel Door
- ⑧ Internally Illuminated Signage
- ⑨ Wall-Mounted Exterior Light
- ⑩ Prefinished Exterior Metal Panel System
- ⑪ Exterior Glazed Elevator Shaft
- ⑫ Architectural Masonry Unit
- ⑬ Brick Masonry



Proposed Grocery Building - Front Elevation

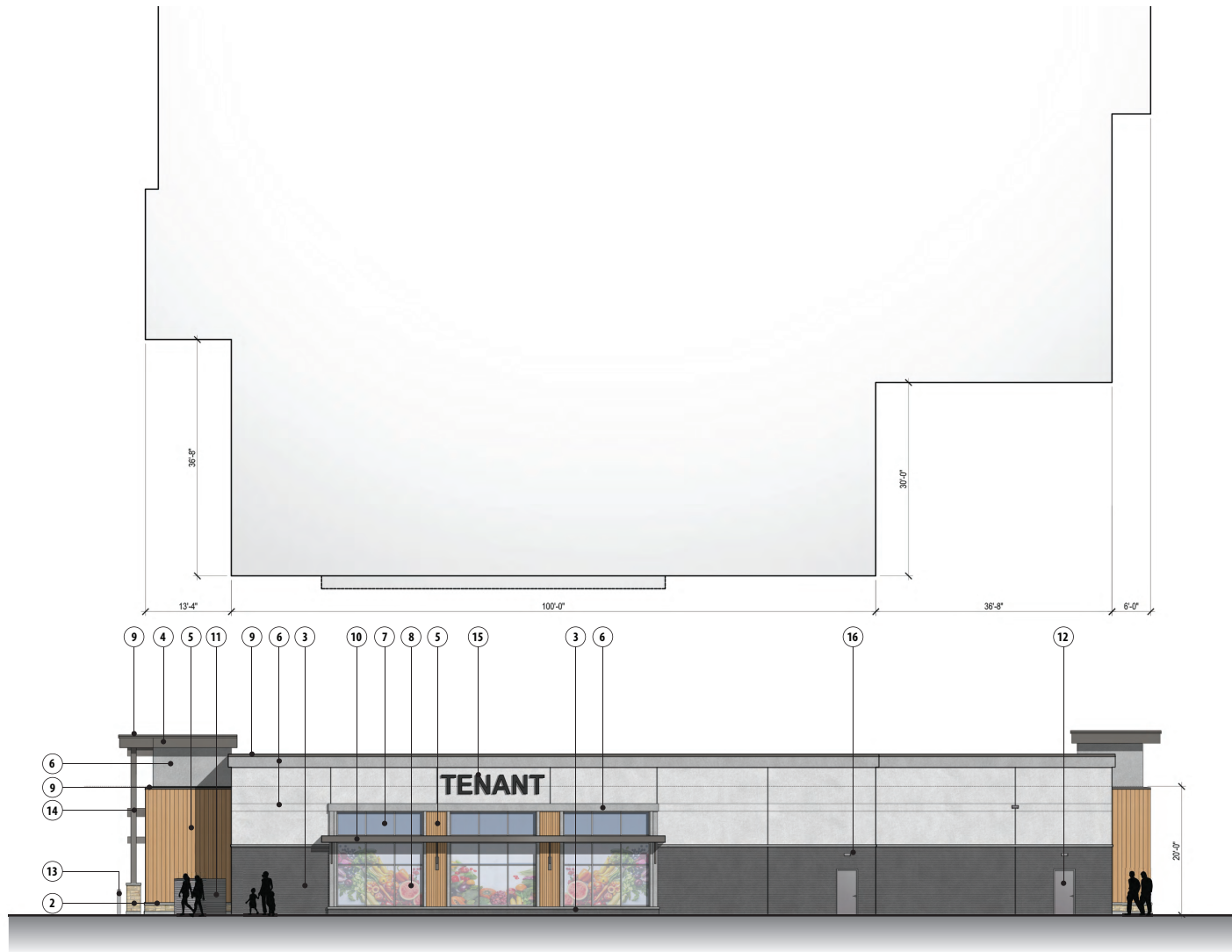


Exterior Materials

- | | | |
|---|---|--|
| ① Architectural Masonry Unit | ⑦ Aluminum Storefront System with Clear Low-E Glazing | ⑫ Flush-Hollow Core Steel Door |
| ② Stone Veneer | ⑧ Aluminum Storefront System with Translucent, Patterned Low-E Glazing or Infill Graphic Panels | ⑬ HD Galvanized Steel Pipe Bollard |
| ③ Face Brick | ⑨ Prefinished Metal Coping | ⑭ HD Galvanized Structural Steel Framing |
| ④ Aluminum Composite Metal Panel System | ⑩ Prefinished Metal Canopy System | ⑮ Internally Illuminated Signage |
| ⑤ Simulated Wood Cladding System | ⑪ Insulated Coiling Steel Overhead Door | ⑯ Wall-Mounted Exterior Lighting |
| ⑥ Exterior Insulated Finish System | | |

119th & Renner
Olathe, Kansas

SAI# 240501 | 10.22.2024



Proposed Grocery Building - Side Elevation



Exterior Materials

- | | | |
|---|---|--|
| ① Architectural Masonry Unit | ⑦ Aluminum Storefront System with Clear Low-E Glazing | ⑫ Flush-Hollow Core Steel Door |
| ② Stone Veneer | ⑧ Aluminum Storefront System with Translucent, Patterned Low-E Glazing or Infill Graphic Panels | ⑬ HD Galvanized Steel Pipe Bollard |
| ③ Face Brick | ⑨ Prefinished Metal Coping | ⑭ HD Galvanized Structural Steel Framing |
| ④ Aluminum Composite Metal Panel System | ⑩ Prefinished Metal Canopy System | ⑮ Internally Illuminated Signage |
| ⑤ Simulated Wood Cladding System | ⑪ Insulated Coiling Steel Overhead Door | ⑯ Wall-Mounted Exterior Lighting |
| ⑥ Exterior Insulated Finish System | | |

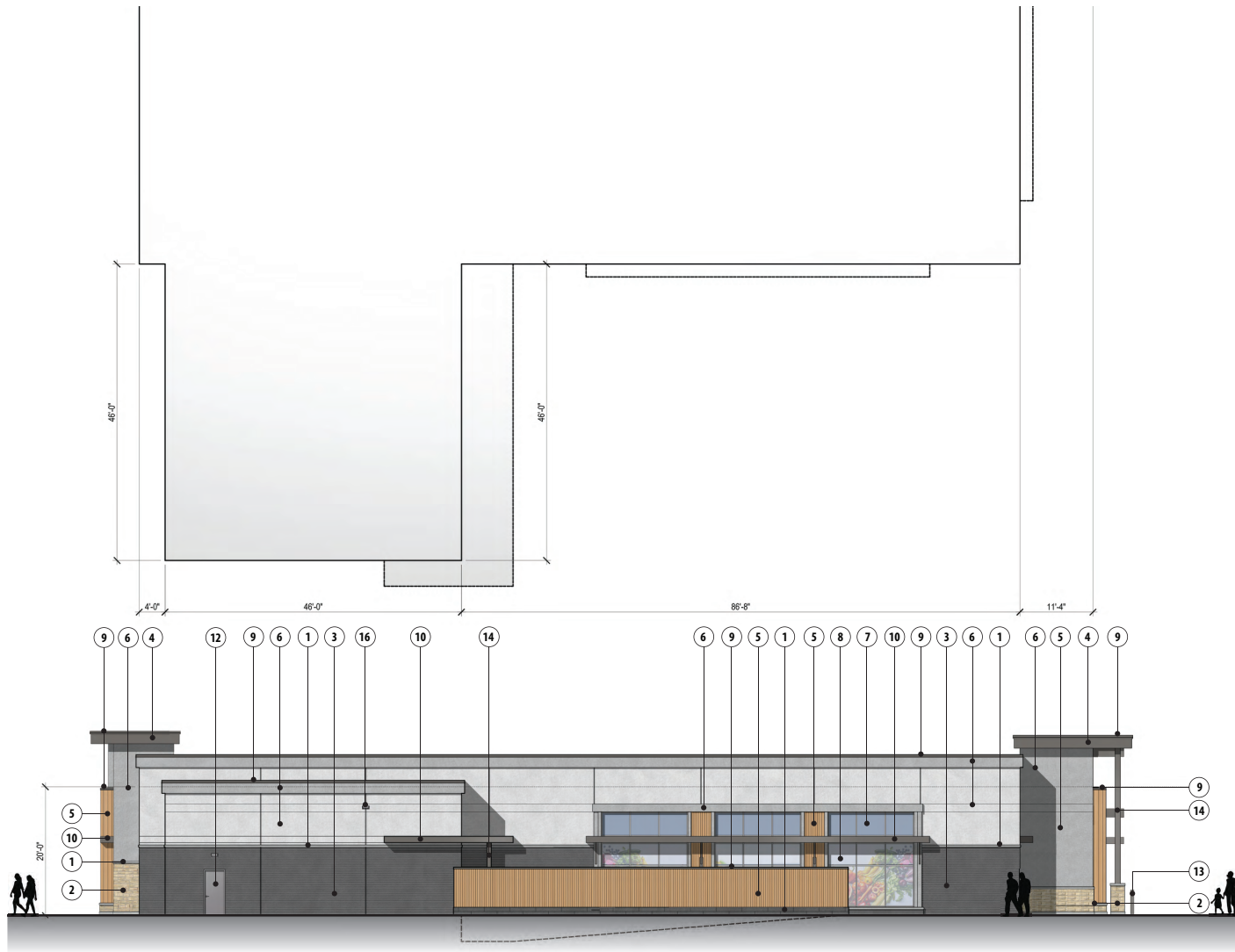


Proposed Grocery Building - Rear Elevation



Exterior Materials

- | | | |
|---|---|--|
| ① Architectural Masonry Unit | ⑦ Aluminum Storefront System with Clear Low-E Glazing | ⑫ Flush-Hollow Core Steel Door |
| ② Stone Veneer | ⑧ Aluminum Storefront System with Translucent, Patterned Low-E Glazing or Infill Graphic Panels | ⑬ HD Galvanized Steel Pipe Bollard |
| ③ Face Brick | ⑨ Prefinished Metal Coping | ⑭ HD Galvanized Structural Steel Framing |
| ④ Aluminum Composite Metal Panel System | ⑩ Prefinished Metal Canopy System | ⑮ Internally Illuminated Signage |
| ⑤ Simulated Wood Cladding System | ⑪ Insulated Coiling Steel Overhead Door | ⑯ Wall-Mounted Exterior Lighting |
| ⑥ Exterior Insulated Finish System | | |

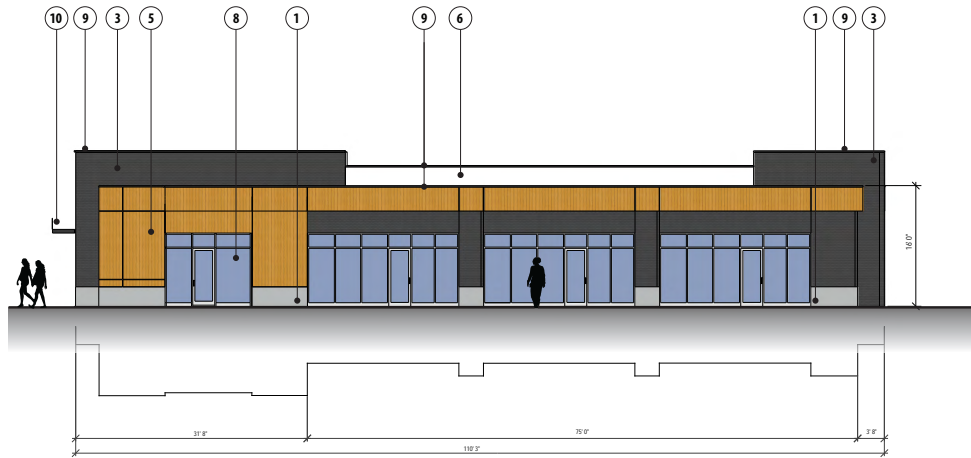


Proposed Grocery Building - Side Elevation

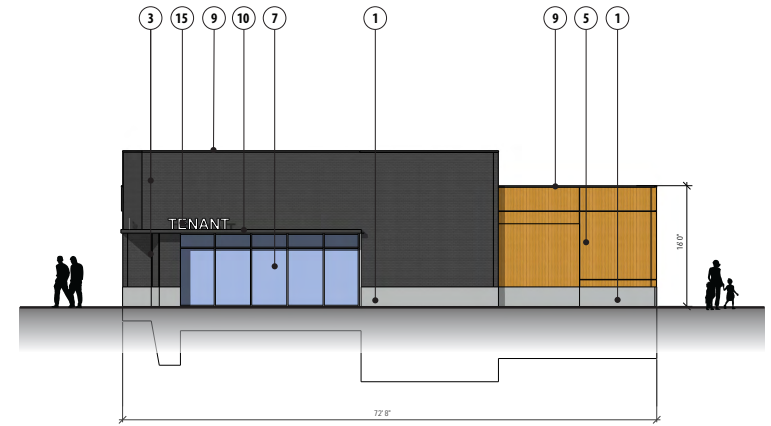


Exterior Materials

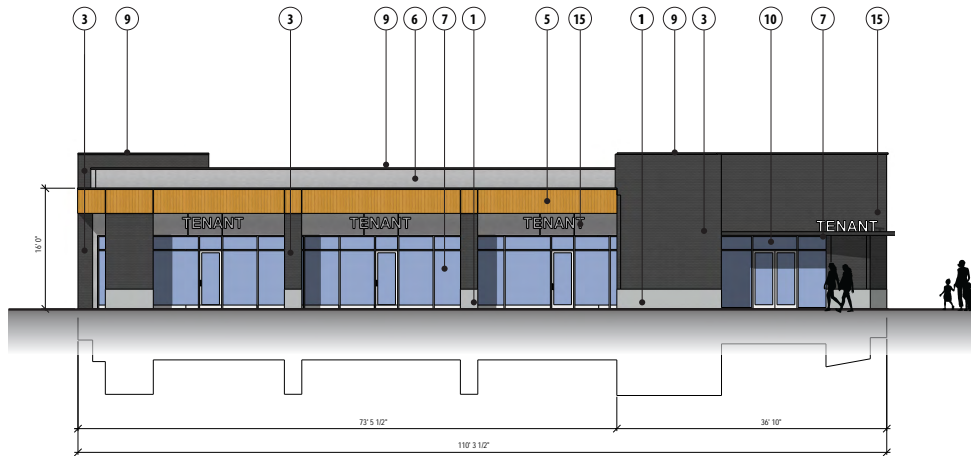
- | | | |
|---|---|--|
| ① Architectural Masonry Unit | ⑦ Aluminum Storefront System with Clear Low-E Glazing | ⑫ Flush-Hollow Core Steel Door |
| ② Stone Veneer | ⑧ Aluminum Storefront System with Translucent, Patterned Low-E Glazing or Infill Graphic Panels | ⑬ HD Galvanized Steel Pipe Bollard |
| ③ Face Brick | ⑨ Prefinished Metal Coping | ⑭ HD Galvanized Structural Steel Framing |
| ④ Aluminum Composite Metal Panel System | ⑩ Prefinished Metal Canopy System | ⑮ Internally Illuminated Signage |
| ⑤ Simulated Wood Cladding System | ⑪ Insulated Coiling Steel Overhead Door | ⑯ Wall-Mounted Exterior Lighting |
| ⑥ Exterior Insulated Finish System | | |



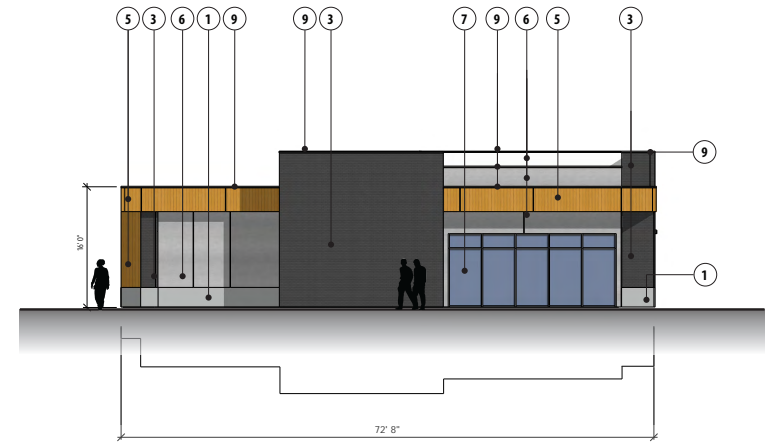
Proposed In-Line Retail Building - Rear Elevation



Proposed In-Line Retail Building - Side Elevation



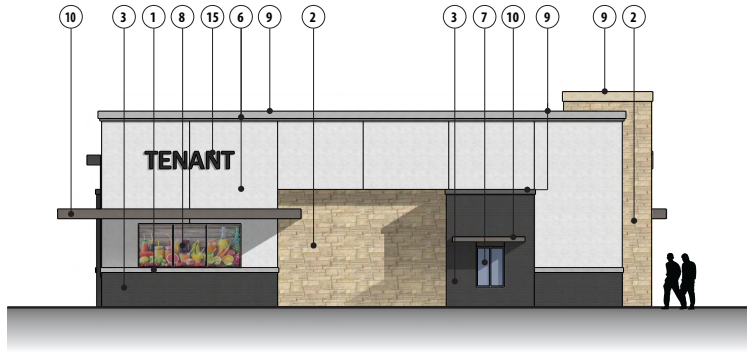
Proposed In-Line Retail Building - Front Elevation



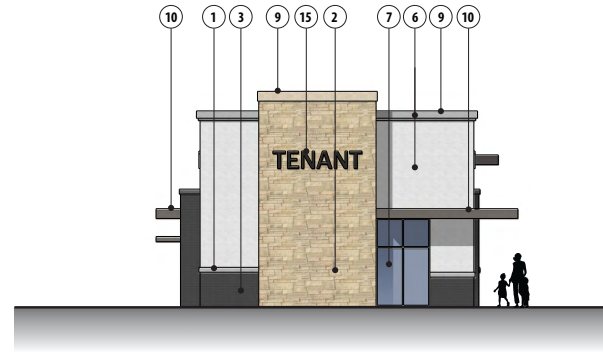
Proposed In-Line Retail Building - Side Elevation

Exterior Materials

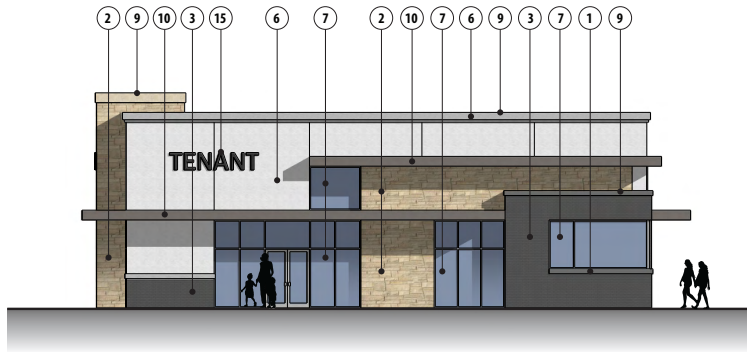
- | | | |
|---|---|--|
| ① Architectural Masonry Unit | ⑦ Aluminum Storefront System with Clear Low-E Glazing | ⑫ Flush-Hollow Core Steel Door |
| ② Stone Veneer | ⑧ Aluminum Storefront System with Translucent, Patterned Low-E Glazing or Infill Graphic Panels | ⑬ HD Galvanized Steel Pipe Bollard |
| ③ Face Brick | ⑨ Prefinished Metal Coping | ⑭ HD Galvanized Structural Steel Framing |
| ④ Aluminum Composite Metal Panel System | ⑩ Prefinished Metal Canopy System | ⑮ Internally Illuminated Signage |
| ⑤ Simulated Wood Cladding System | ⑪ Insulated Coiling Steel Overhead Door | ⑯ Wall-Mounted Exterior Lighting |
| ⑥ Exterior Insulated Finish System | | |



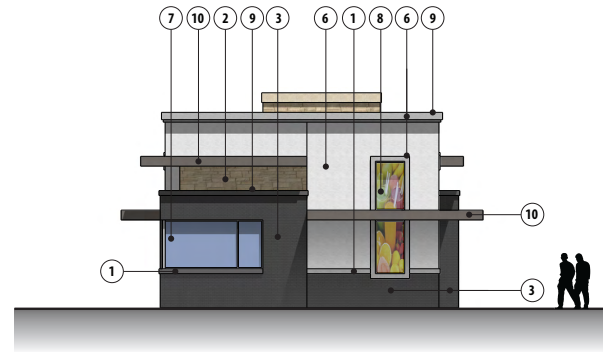
Proposed Pad Site Building - Rear Elevation



Proposed Pad Site Building - Side Elevation



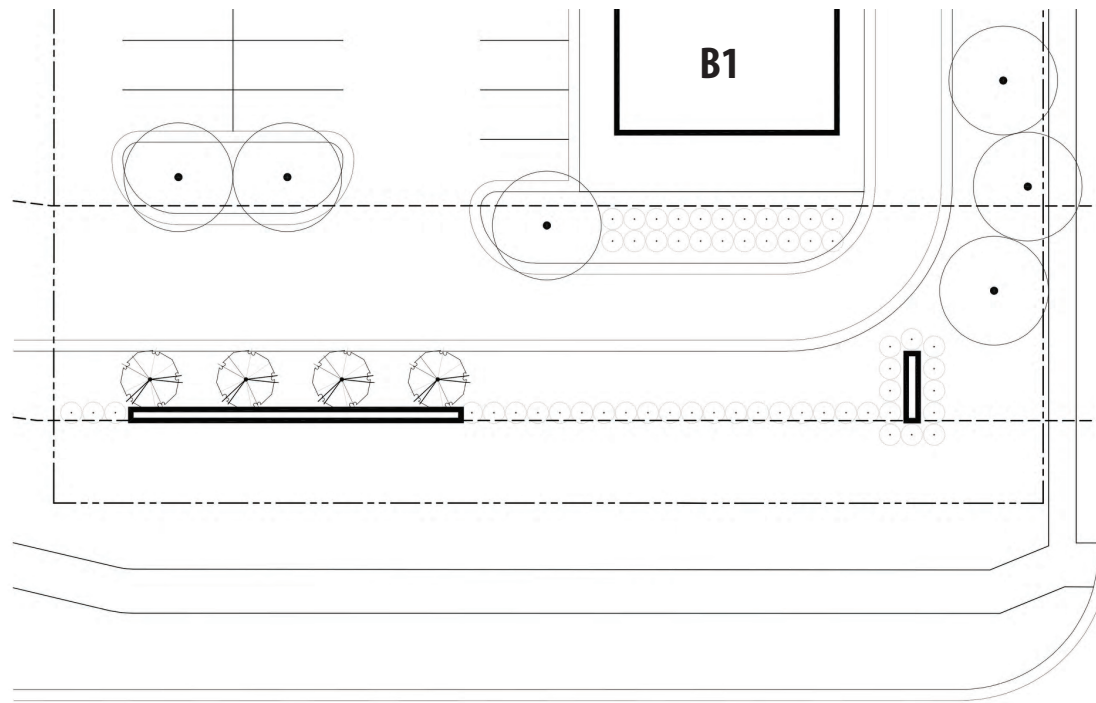
Proposed Pad Site Building - Front Elevation



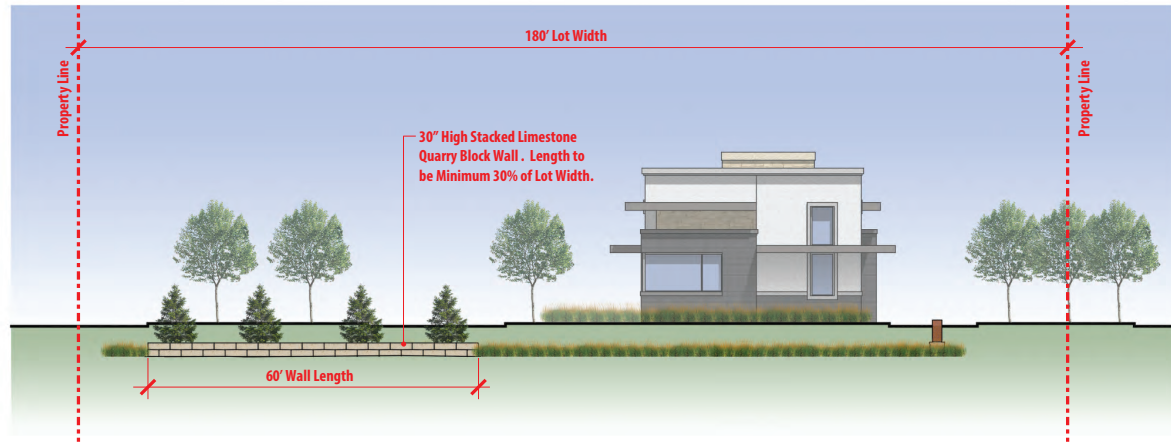
Proposed Pad Site Building - Side Elevation

Exterior Materials

- | | | |
|---|---|--|
| ① Architectural Masonry Unit | ⑦ Aluminum Storefront System with Clear Low-E Glazing | ⑫ Flush-Hollow Core Steel Door |
| ② Stone Veneer | ⑧ Aluminum Storefront System with Translucent, Patterned Low-E Glazing or Infill Graphic Panels | ⑬ HD Galvanized Steel Pipe Bollard |
| ③ Face Brick | ⑨ Prefinished Metal Coping | ⑭ HD Galvanized Structural Steel Framing |
| ④ Aluminum Composite Metal Panel System | ⑩ Prefinished Metal Canopy System | ⑮ Internally Illuminated Signage |
| ⑤ Simulated Wood Cladding System | ⑪ Insulated Coiling Steel Overhead Door | ⑯ Wall-Mounted Exterior Lighting |
| ⑥ Exterior Insulated Finish System | | |



Proposed Pad Site B1 - Site Plan



Proposed Pad Site B1 - Street Elevation