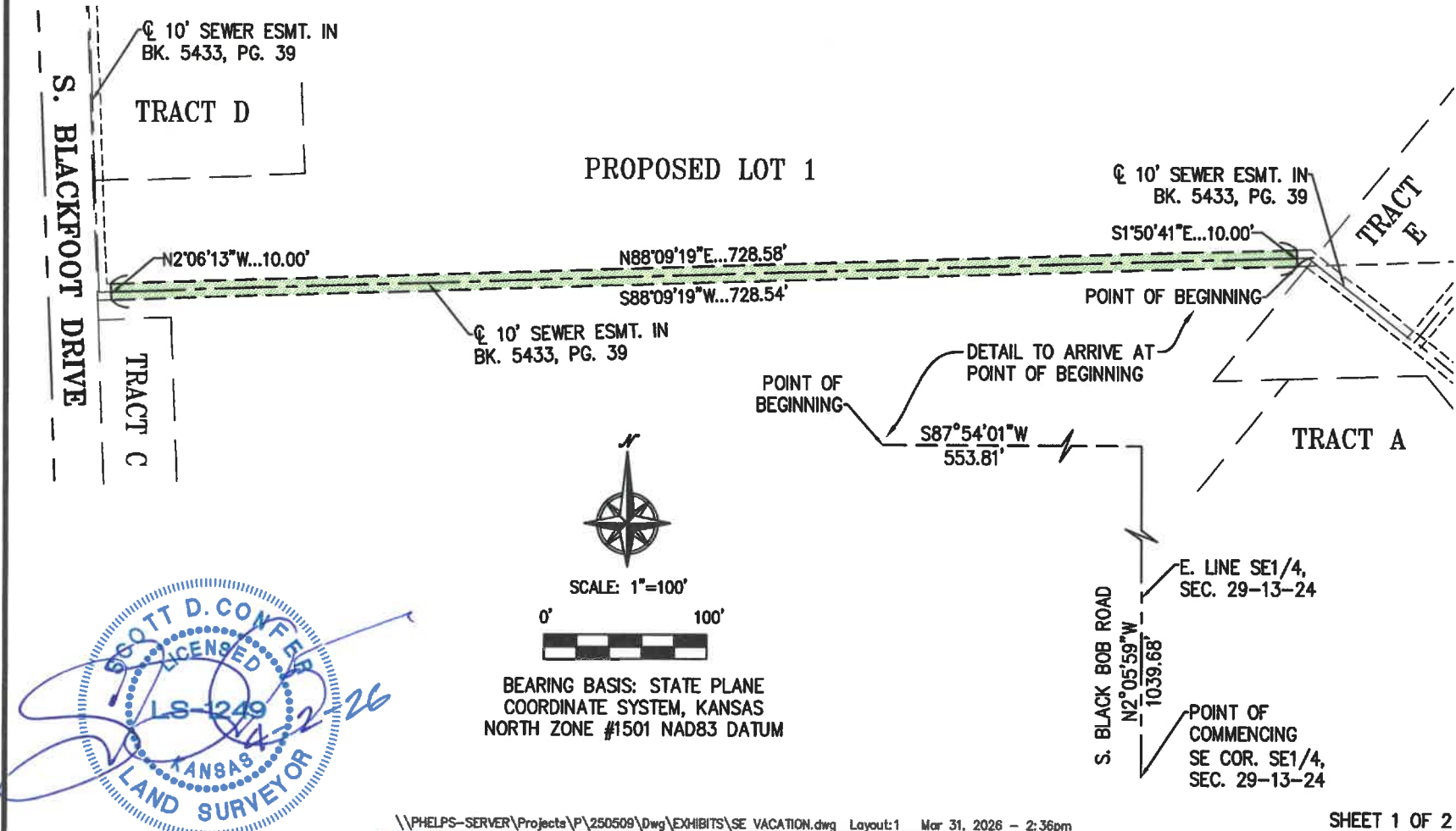


EXHIBIT "A"

SANITARY SEWER EASEMENT VACATION



BY: SCOTT D. CONFER, KS. LS-1249



PLANNING PHELPS ENGINEERING, INC (913) 393-1155
 ENGINEERING 1270 N. Winchester Fax (913) 393-1166
 IMPLEMENTATION Olathe, Kansas 66061 www.phelpsengineering.com

CERTIFICATE OF AUTHORIZATION KANSAS LAND SURVEYING - LS-82
 ENGINEERING - E-391
 CERTIFICATE OF AUTHORIZATION MISSOURI LAND SURVEYING-2007001128
 ENGINEERING-2007005058

SHEET 1 OF 2
 PROJECT NO. 250509
 DATE: 3/30/26
 BY: DAG

\\PHELPS-SERVER\Projects\P\250509\Dwg\EXHIBITS\SE VACATION.dwg Layout:1 Mar 31, 2026 - 2:36pm

EXHIBIT "A"
SANITARY SEWER EASEMENT VACATION

DESCRIPTION:

All that part of the Permanent Sanitary Sewer Easement described in Book 5433 at Page 39, in the Office of the Register of Deeds, said being a 10 foot wide tract of land across the Southeast Quarter of Section 29, Township 13, Range 24, in the City of Olathe, Johnson County, Kansas, as more particularly described by Phelps Engineering, Inc. CLS-82 Project No. 250509 March 31, 2026, to wit:

Commencing at the Southeast corner of the Southeast Quarter of said Section 29; thence N 2°05'59" W, along the East line of the Southeast Quarter of said Section 29, a distance of 1039.68 feet; thence S 87°54'01" W, a distance of 553.81 feet, to a point on the South line of said Permanent Sanitary Sewer Easement, said point also being the Point of Beginning; thence S 88°09'19" W, along the South line of said Easement, a distance of 728.54 feet; thence N 2°06'13" W, a distance of 10.00 feet, to a point on the North line of said Easement; thence N 88°09'19" E, along the North line of said Easement, a distance of 728.58 feet; thence S 1°50'41" E, a distance of 10.00 feet, to the Point of Beginning.



BY: _____
SCOTT D. CONFER, KS. LS-1249

\\\\PHELPS-SERVER\Projects\P\250509\Dwg\EXHIBITS\SE VACATION.dwg Layout:2 Mar 31, 2026 - 2:36pm

SHEET 2 OF 2



PLANNING PHELPS ENGINEERING, INC (913) 393-1155
ENGINEERING 1270 N. Winchester Fax (913) 393-1166
IMPLEMENTATION Olathe, Kansas 66061 www.phelpsengineering.com

CERTIFICATE OF AUTHORIZATION KANSAS LAND
SURVEYING - LS-82
ENGINEERING - E-391
CERTIFICATE OF AUTHORIZATION MISSOURI
LAND SURVEYING-2007001128
ENGINEERING-2007005058

PROJECT NO. 250509
DATE: 3/30/26
BY: DAG