

## **PROFESSIONAL SERVICES AGREEMENT**

THIS AGREEMENT is made in Johnson County, Kansas, by and between the City of Olathe, Kansas, hereinafter "City," and Stantec Consulting Services Inc., hereinafter "Consultant" (collectively, the "Parties").

City intends to construct an improvement project (hereinafter called the "Project") in Olathe, Kansas, described as follows:

### **2024 Arterial Street Pavement Condition Assessment** **Project No. 3-P-000-24**

The Project is more fully described in **Exhibit A** (attached hereto and incorporated herein by reference).

By executing this Agreement, Consultant represents to City that Consultant is professionally qualified to perform services on this Project and is licensed to practice engineering by all public entities having jurisdiction over Consultant and the Project.

### **SECTION I - DEFINITIONS**

As used in this Agreement, the following terms will have the following meanings unless otherwise stated or reasonably required by the Agreement, and other forms of any defined words will have a meaning parallel thereto. All terms defined in the most recent version of the Engineers Joint Contract Documents Committee (EJCDC) Standard General Conditions of the Construction Contract (the "General Conditions") adopted by City will have the same meaning when used in this Agreement unless otherwise specifically stated or in the case of a conflict in which case the definition used in this Agreement will prevail in the interpretation of this Agreement.

**"Additional Services"** means services in addition to those listed in **Exhibit B**.

**"City"** means the City of Olathe, Kansas, a municipal corporation duly organized under the laws of the State of Kansas, its employees, appointees, and officers.

**"Consultant"** means the company or individual identified above, herein, and its affiliates, subsidiaries, employees, agents, and assigns.

**"Construction Cost"** means and includes but is not limited to the cost of the entire construction of the Project, including all supervision, materials, supplies, labor, tools, equipment, transportation and/or other facilities furnished, used or consumed in connection with the Project, without deduction on account of penalties, liquidated damages or other amounts withheld from payment to a construction contractor or contractors, but such cost will not include Consultant's fee, or any other payments to Consultant as set forth herein, and will not include cost of land or rights-of-way and easement acquisition.

"Contract Documents" means those documents so identified in the Agreement for Construction of this Project including all Consultant Documents.

"Consultant Documents" means all documents required or reasonably implied by the nature of the scope of services to be performed by Consultant hereunder, including, but not limited to, plans, specifications, drawings, tracings, designs, calculations, sketches, models and reports.

"Professional Services" means the professional services, labor, materials, supplies, testing, surveying, title work, inspection, if applicable, and all other acts, duties, and services required of Consultant under this Agreement including any Additional Services.

"Project" is as above described.

"Project Manager" means the person employed and designated by City to act as the City's representative for the Project.

"Right-of-Way" and "Easements" means and includes the public street, highway, or road right-of-way and any other land dedicated to or otherwise subject to public use.

"Subsurface Borings and Testing" means borings, probings and subsurface explorations, laboratory tests and inspections of samples, materials and equipment; appropriate professional interpretations of all the foregoing.

"Traffic Control Plan" means a specific plan that includes but is not limited to signing; application and removal of pavement markings; construction sequencing and scheduling; methods and devices for delineation and channelization; placement and maintenance of devices; traffic regulation; and inspection made in accordance with the City's technical specifications.

## **SECTION II - COMPENSATION**

### **A. FEES & EXPENSES**

1. Total Fee: City agrees to pay Consultant an amount not to exceed **Fifty-Three Thousand Five Hundred Dollars (\$53,500)**, including reimbursable expenses as described herein. The fee is based on the performance of the scope of services outlined in this Agreement, including **Exhibit B** attached hereto and incorporated by reference, and will be billed by Consultant using hourly rates and equipment charges as set forth in **Exhibit C** attached hereto and incorporated by reference, plus reimbursable expenses as set forth below. All bills will be submitted to City monthly as provided herein. Payment to Consultant will not exceed the following percentages in each phase of the Project without prior written consent of City.

## **B. SERVICES BEYOND THE SCOPE OF SERVICES**

1. Change in Scope: For substantial modifications in authorized Project scope, substantial modifications of drawings, or substantial modifications to specifications previously accepted by City, when requested by City and through no fault of Consultant, Consultant will be compensated for time and expense required to incorporate such modifications at Consultant's standard hourly rates per **Exhibit C**; provided, however, that any increase in fee or extension of time for Consultant to complete the services must be approved by City in writing. Consultant will correct or revise any errors or deficiencies in its designs, drawings or specifications without additional compensation when due to Consultant's negligence or other actionable fault.
2. Additional Services: Consultant will provide Additional Services authorized by a supplemental agreement executed in writing by the Parties. Prior to commencing any Additional Services, Consultant must submit a proposal outlining the Additional Services to be provided, estimation of total hours, completion date, and a maximum fee based upon the hourly rate schedule attached hereto as **Exhibit C**. Such Additional Services may include, but are not limited to, making computations and determinations of special assessments, making special trips requested by City other than those required by Section III, preparing changes in plans ordered by City or made necessary by causes beyond the control of Consultant, providing services necessitated in the event the Professional Services are suspended or abandoned, if such suspension or abandonment is not the result of a breach of this Agreement by Consultant, and providing any other special services not otherwise covered by this Agreement which may be requested by City to complete the Project. Payment to Consultant as compensation for Additional Services will be in accordance with the hourly rate schedule attached as **Exhibit C**.
3. Special Services: Consultant may be called on to serve as a consultant or witness in any litigation, arbitration, legal or administrative proceeding arising out of this Project. If Consultant is requested, in writing, by City, to appear as a witness, it will be paid its hourly fee as reflected on the hourly rate schedule attached hereto as **Exhibit C**. Consultant will not be paid extra by City if Consultant's appearance is to defend its Professional Services.

## **C. BILLING & PAYMENT**

1. Billing: Consultant may bill City monthly for completed Professional Services, including reimbursable expenses. The bill submitted by Consultant must itemize the Professional Services and reimbursable expenses for which payment is requested. City agrees to pay Consultant within thirty (30) days of approval by the Governing Body or other agent of City in accordance with the City's Procurement Policy.

2. City's Right to Withhold Payment: In the event City becomes credibly informed that any representations of Consultant provided in its monthly billing are wholly or partially inaccurate, City may withhold payment of sums then or in the future otherwise due to Consultant until the inaccuracy and the cause thereof is corrected to City's reasonable satisfaction. In the event City questions some element of an invoice, that fact will be made known to Consultant immediately. Consultant will help effect resolution and transmit a revised invoice, if necessary. Amounts not questioned by City will be paid to Consultant in accordance with the contract payment procedures.
3. Progress Reports: A progress report must be submitted with each monthly pay request indicating the percentage of Professional Services completed to date. This report will serve as support for payment to Consultant.

**D. SCHEDULE**

All services must be completed on or before **September 30, 2024**.

**SECTION III - RESPONSIBILITIES OF CONSULTANT**

Consultant will perform the Professional Services in all phases of the Project to which this Agreement applies as herein provided and which are required for the construction of the Project as described below:

**A. PRELIMINARY DESIGN PHASE**

1. Services: The Professional Services to be provided during this phase are set out in **Exhibits B, D, and E**, attached hereto and incorporated by reference.
2. Preliminary Design Documents: Consultant will furnish City copies of the above preliminary design documents per the City of Olathe Technical Specifications and Design Criteria for Public Improvements, unless otherwise noted in **Exhibit B**.
3. Preliminary Cost Estimate: Consultant will furnish City an estimate of probable Construction Cost based on the preliminary design and at subsequent design review submittals as specifically requested by City. Consultant's estimate of probable Construction Cost is to be made based on Consultant's experience and qualifications and represent Consultant's best judgment as an experienced and qualified design professional, familiar with the construction industry.
4. Budget: Consultant will immediately advise City if, in its opinion, the amount budgeted for construction is not sufficient to adequately design and construct the improvement as requested.

5. Permits and Right-of-Way: These Professional Services will include preparation of plans, exhibits and applications required for securing approvals, licenses, or permits from governmental or corporate agencies or authorities, and providing City with documents for right-of-way and/or easement acquisition necessary for the construction of the improvement, unless eminent domain proceedings are required to secure the right-of-way and/or easements. Consultant will comply with the conditions set out in the Land Acquisition Checklist for Consultant Projects as in **Exhibit D**. City will be responsible for acquiring the necessary Right-of-Way or Easements, unless otherwise agreed upon between City and Consultant. A property map of the areas needed to be acquired, and other necessary information related to such acquisition, will be provided by Consultant with copies of the preliminary construction plans to the Project Manager. It is recognized that such information cannot be provided for some tracts until the completion of the final construction plans. Consultant will also provide any necessary ownership and encumbrance (O&E) documents.

**B. FINAL DESIGN PHASE**

1. Services: The Professional Services to be provided during this phase are set out in **Exhibits B and E**, attached hereto and incorporated by reference.
2. Final Design Documents: Consultant will furnish City copies of the final design plans per the City of Olathe Technical Specifications and Design Criteria for Public Improvements unless otherwise noted in **Exhibit B**.
3. Contract Documents: Consultant will prepare for City all Project contract agreement forms, final design plans, general conditions and supplementary conditions, bid forms, invitations to bid and instructions to bidders, and assist in the preparation of other related documents requested by City, unless such documents are provided by City.
4. Final Cost Estimate: Consultant will furnish City an estimate of probable Construction Cost based on final design. This estimate is commonly known as the "Engineer's Estimate" and will be used as the basis for construction contract award. The Engineer's Estimate must be sealed and provided by a professional engineer licensed by the State of Kansas. Since Consultant has no control over the cost of labor, materials, or equipment furnished by others not under contract to Consultant, or over the resources provided by others not under contract to Consultant to meet Project schedules, Consultant's opinion of probable costs and of Project schedules for construction may be made based on experience and qualifications as a professional engineer. Consultant does not guarantee that proposals, bids, or actual Project costs will not vary from Consultant's opinions of probable cost or that actual schedules will not vary from Consultant's projected schedules.
5. Budget: Consultant will immediately advise City if, in its opinion, the amount budgeted for the Project is not sufficient to cover all Project costs, including but not limited to, construction, right-of-way and easement acquisition, inspection, and testing.

## **C. BIDDING PHASE**

1. Services: The Professional Services to be provided during this phase are set out in **Exhibit B**, attached hereto and incorporated by reference.
2. Bids Exceeding Cost Estimate: If all bids exceed Consultant's Final Cost Estimate, Consultant, at the request of City and for no additional cost, will prepare a report for City identifying why all the bids exceed the estimate. City has four (4) options if all bids exceed Consultant's estimate. City may: (1) give written approval of an increase in the Project cost up to a maximum of 7% above the authorized total; (2) authorize rebidding of the Project; (3) terminate the Project and this Agreement; or (4) cooperate in revising the Project scope or specifications, or both, as necessary to reduce the construction cost.

## **D. CONSTRUCTION PHASE**

1. In-House Administration and Inspection: It is understood that City will provide full-time, in-house administration and inspection of the construction Project and the work of the construction contractor at City's expense, unless otherwise agreed upon in writing by the Parties. Consultant will assist City by providing general administration and inspection of the work of the construction contractor as requested by City by conducting periodic inspections of the construction contractor's work during construction and will assist City in a final inspection of the construction Project after completion of the work by the construction contractor. Consultant will also check shop drawings and assist City in making interpretation of plans and specifications and reviewing pay estimates for making payments to the construction contractor.
2. Services: The Professional Services provided during this phase are set out in **Exhibits B and E**, both attached hereto and incorporated by reference.
3. Additional Drawings: If during construction, situations arise which require additional drawings or details, Consultant agrees to provide such additional drawings or details at no cost to City when the additional drawings or details are required to correct Consultant's errors or omissions or clarify Consultant's intent in the original design and preparation of construction drawings. If such situations occur through no fault of Consultant, or are beyond Consultant's control, both Parties agree to negotiate an equitable payment to Consultant for Consultant's Professional Services rendered, which will be accomplished through a Change Order.
4. Staking: Unless otherwise provided, staking must be included in the bid specifications to be performed by the construction contractor.

5. Notice of Defects: If, based on Consultant's involvement during the construction phase, Consultant observes or otherwise becomes aware of any defect in the work, Consultant will give prompt written notice to City of such defects and their approximate location on the Project. However, Consultant will not have control over or charge of and will not be responsible for construction means, methods, techniques, sequences or procedures, or for safety precautions, inspections and programs in connection with the work, since these are solely the construction contractor's responsibility under the contract for construction to be entered into with City. Consultant will not be responsible for the construction contractor's schedules or failure to carry out the work in accordance with the Contract Documents. Consultant will not have control over or charge of acts or omissions of any construction contractor, any of a construction contractor's subcontractors, or any of the agents or employees of a construction contractor selected by City to construct the Project.
6. Shop Drawings: Consultant will review and take appropriate action on the chosen construction contractor's shop drawings and samples, and the results of tests and inspections and other data which each construction contractor is required to submit for the purposes of reviewing for compliance with the design concept and conformance with the requirements of the Contract Documents and the City of Olathe Technical Specifications and Design Criteria for Public Improvements.

#### **E. GENERAL DUTIES AND RESPONSIBILITIES**

1. Personnel: Consultant will assign only qualified personnel to perform any service concerning the Project as identified in Consultant's response to the Request for Proposals. At the time of execution of this Agreement, the Parties anticipate that the following individual will perform as the principal on this Project: **Allan Venema, Principal, Infrastructure Management & Pavement Engineering**. As principal on this Project, this person will be the primary contact with the City's Project Manager and will have authority to bind Consultant. So long as the individual named above remains actively employed or retained by Consultant, such individual will perform the function of principal on this Project. For the Professional Services rendered hereunder, Consultant, and any of its subcontractors, will employ engineers, architects, landscape architects, and surveyors licensed by the Kansas State Board of Technical Professions.
2. Utility Coordination: Consultant will comply with the conditions set out in the Utility Coordination Checklist as in **Exhibit E**. The services required of Consultant by this checklist are expected to usually occur during the Preliminary Design, Final Design, and Construction phases; however, Consultant's responsibilities under this checklist may sometimes occur at other times.

3. Service By and Payment to Others: Any services authorized in writing by City and performed by any party other than Consultant or its subcontractors (a "Third Party") in connection with the proposed Project will be contracted for and paid for by City. In addition to payments for the Third Party's professional services, this may also include necessary permits, licenses, ownership certifications, materials testing, advertising costs, and other special tests or other services required or requested by City or Consultant which are not defined within the scope of services of Consultant as set forth herein. Fees for such extra services will be subject to negotiation between City and the Third Party. Fees will be approved by City in writing prior to the execution of any extra services. Although Consultant may assist City in procuring such services of Third Parties, Consultant will in no way be liable to either City or such Third Parties in any manner whatsoever for such services or for payment thereof.
4. Subcontracting or Assignment of Services: Consultant may not subcontract or assign any of the Professional Services to be performed under this Agreement without first obtaining the written approval of City. Unless otherwise stated in the written consent to an assignment, no assignment will release or discharge Consultant from any obligation under this Agreement. Any person or firm proposed for subcontracting Professional Services under this Agreement will maintain throughout the duration of the Agreement, insurance as provided in Section V.D.2. herein, and will additionally maintain Professional Liability insurance in a minimum amount of \$1,000,000 per claim and in the aggregate and provide City with an insurance certificate showing the insurance limits provided by Consultant's subconsultant. Any services completed by a City-approved subcontractor of Consultant pursuant to this Agreement may not be increased more than ten percent (10%) over the actual cost of the services.
5. Endorsement: Consultant must sign and seal all final plans, specifications, estimates and engineering data furnished by Consultant. Any review or approval by City of any documents prepared by Consultant, including but not limited to the plans and specifications, will be solely for determining whether such documents are consistent with the City of Olathe Technical Specifications and Design Criteria for Public Improvements and may not be construed as City assuming responsibility for the accuracy, adequacy, fitness, suitability and coordination of Consultant's services and deliverables. No review of such documents will relieve Consultant of its responsibility for the accuracy, adequacy, fitness, suitability and coordination of its services and deliverables.
6. Inspection of Documents: Consultant must maintain all Project records for inspection by City at reasonable times and places upon written request during the contract period and for three (3) years from the date of final payment.
7. Standard of Care: Consultant will exercise the same degree of care, skill, and diligence in the performance of the Professional Services as is ordinarily possessed and exercised by a professional engineer under similar circumstances. If Consultant fails to meet the foregoing standard, Consultant will perform at its own cost, and without reimbursement from City, the Professional Services necessary to correct errors and omissions which are caused by Consultant's negligence.



## **SECTION IV - CITY OF OLATHE'S RESPONSIBILITIES**

### **A. COMMUNICATION**

City will provide to Consultant information and criteria regarding City's requirements for the Project; examine and timely respond to Consultant's submissions; and give written notice to Consultant, who will respond promptly, whenever City observes or otherwise becomes aware of any defect in the Professional Services.

### **B. ACCESS**

City will provide access for Consultant to enter public and private property related to the Project and performance of Consultant's obligations under this Agreement.

### **C. DUTIES**

City will perform the various duties and services in all phases of the Project which are outlined and designated in **Exhibit B** as City's responsibility.

### **D. PROGRAM AND BUDGET**

City will provide all relevant information reasonably required for Consultant to perform its obligations herein, including but not limited to City's objectives, schedule, constraints, budget with reasonable contingencies, and other necessary design criteria for the Project.

### **E. ADMINISTRATIVE SERVICES**

City will furnish all City-related legal, accounting, insurance and audit services as may be necessary at any time for completion of the Project. However, in no event will any City-related legal, accounting, insurance and or audit services be provided on behalf of Consultant, nor will Consultant serve any other role than as an independent contractor of City.

### **F. BOND FORMS**

City will furnish all bond forms required for the Project.

### **G. PROJECT REPRESENTATIVE**

City will designate a Project Manager to represent City in coordinating this Project with Consultant. The City's Project Manager will have the authority to transmit instructions and decisions of City.

## **SECTION V - GENERAL PROVISIONS**

### **A. TERMINATION**

1. **Notice:** City reserves the right to terminate this Agreement for either cause (due to Consultant's failure to substantially perform its obligations hereunder) or for its convenience and without cause or default on the part of Consultant, by providing fifteen (15) days' written notice of such termination to Consultant. Upon receipt of such notice from City, Consultant will, at City's option as contained in the notice: (1) immediately cease all Professional Services; or (2) meet with City and, subject to City's approval, determine what Professional Services will be required of Consultant in order to bring the Project to a reasonable termination in accordance with the request of City. Consultant will also provide to City copies of all drawings and documents completed or partially completed at the date of termination for which Consultant has been fully paid. If City defaults on its obligations under this Agreement, (due to City's failure to substantially perform its obligations under this Agreement), Consultant must notify City by written notice of its intent to terminate and City will have fifteen (15) days from the date of the notice to cure or to submit a plan for cure acceptable to Consultant. In no event may Consultant terminate the contract solely for its convenience without cause.

Address for Notice:

City of Olathe  
Attn: Austin Lamparter, P.E.  
100 E. Santa Fe  
P.O. Box 768  
Olathe, KS 66051-0768

Stantec Consulting Services Inc.  
Attn: Allan Venema, P.Eng.  
6425 Sheridan Drive, Suite 100  
Amherst NY 14221-4827

2. **Compensation for Convenience Termination:** If City terminates for its convenience as provided herein, City will compensate Consultant for all Professional Services completed and accepted and reimbursable expenses incurred to the date of its receipt of the termination notice and any additional Professional Services and reimbursable expenses requested by City to bring the Project to reasonable termination. Compensation will not include anticipatory profit or consequential damages, neither of which will be allowed.
3. **Compensation for Cause Termination:** If City terminates for cause or default on the part of Consultant, City will compensate Consultant for the reasonable cost of Professional Services and reimbursable expenses completed and accepted to date of its receipt of the termination notice. Compensation will not include anticipatory profit or consequential damages, neither of which will be allowed. City also retains all its rights and remedies against Consultant including but not limited to its rights to sue for damages, interest and attorney fees.

4. Incomplete Documents: Neither Consultant nor its subcontractors will be responsible for errors or omissions in documents which are incomplete because of an early termination under this Section, or Consultant having been deprived of the opportunity to complete such documents and prepare them to be ready for construction.
5. Termination for Lack of Funds: If, for whatever reason, adequate funding is not made available to City to support or justify continuation of the level of Professional Services to be provided by Consultant under this Agreement, City may terminate or reduce the amount of Professional Services to be provided by Consultant under this Agreement. In such event, City will notify Consultant in writing at least thirty (30) days in advance of such termination or reduction of Professional Services for lack of funds.

## **B. DISPUTE RESOLUTION**

City and Consultant agree that disputes relative to the Project will first be addressed by negotiations between the Parties. If direct negotiations fail to resolve the dispute, the Party initiating the claim that is the basis for the dispute may take such steps as it deems necessary to protect its interests; provided, however, that notwithstanding any such dispute, Consultant will proceed with the Professional Services as per this Agreement as if no dispute existed, and City will continue to make payment for Consultant's completed Professional Services; and provided further that no dispute will be submitted to arbitration without both Parties' express written consent.

## **C. OWNERSHIP OF CONSULTANT DOCUMENTS**

Consultant will provide City a copy of all final Consultant Documents, including but not limited to prints, reproductions, reports, plans, specifications and related documents, which will become the property of City, provided that Consultant's copyrighted instruments will remain in the ownership of Consultant if Consultant, at Consultant's sole discretion, may so identify them by appropriate markings. If Consultant is paid in full for its Professional Services, then City may subsequently reuse these final documents without any additional compensation or agreement of Consultant. However, such reuse without written verification or adaptation by Consultant for the specific purpose intended by City will be at City's sole risk and without liability or legal exposure to Consultant. City does not take any responsibility for the reuse of documents by others.

## **D. INSURANCE**

1. General: Consultant will maintain, throughout the duration of this Agreement, insurance (on an occurrence basis unless otherwise agreed to) of such types and in such amounts as required in **Exhibit F (City of Olathe Insurance Requirements)**. Professional Liability may be written on a "claims made" basis. Consultant will provide certificates of insurance and renewals thereof on forms acceptable to City (**Exhibit G – Certificate of Insurance**). Consultant is required to promptly notify City of a material change or cancellation of any policy listed on the Certificate.

2. Subcontractor's Insurance: If a part of the Professional Services under this Agreement is to be sublet, Consultant will either (a) cover all subcontractors in its insurance policies, or (b) require each subcontractor not so covered to secure insurance which will protect subcontractor against all applicable hazards or risks of loss in the minimum amounts designated herein. If Consultant selects option (b), then Consultant agrees to provide the City's Risk Manager a certificate of insurance acceptable to the Risk Manager at least seven (7) days prior to allowing the subcontractor to perform any services on this Project. Consultant agrees that any subcontractor providing services on said Project without providing a certificate of insurance acceptable to the City's Risk Manager will immediately cease all services on said Project and will assume all financial risk associated with such failure thereto.

#### **E. INDEMNITY**

1. Loss: For purposes of indemnification requirements, the term "Loss" means any and all loss, damage, liability or expense, of any nature whatsoever, whether incurred as a judgment, settlement, penalty, fine or otherwise (including reasonable attorney's fees and the cost of defense), in connection with any action, proceeding, demand or claim for injury, including death, to any person or persons or damages to or loss of, or loss of the use of, property of any person, firm or corporation, including the parties hereto, which arise out of or are connected with the performance of this Agreement.
2. Indemnification and Hold Harmless: For purposes of this Agreement, Consultant agrees to indemnify and hold harmless City and its agents from any and all Loss where Loss is caused or incurred as a result of the intentional misconduct, recklessness, negligence, or other actionable fault of Consultant or its subcontractors. Neither acceptance of completed work nor payment therefor nor termination or expiration of this Agreement releases Consultant of its obligations under this paragraph.
3. Comparative Fault & Contributory Negligence: It is a specific element of consideration of this Agreement that the indemnity in Section V.E.2 will apply notwithstanding the joint, concurring or contributory or comparative fault or negligence of City or any Third Party and, further notwithstanding any theory of law including, but not limited to, a characterization of City's or any Third Party's joint, concurring or contributory or comparative fault or negligence as either passive or active in nature; provided, however, that Consultant's obligation hereunder will not include amounts attributable to the fault or negligence of City or any Third Party for whom Consultant is not responsible.
4. Damage Limitations: The indemnification obligation contained in this Agreement will not be limited by any limitation on amount or type of damages, compensation or benefits payable by or for Consultant or its subcontractors, by the minimum insurance required by this Agreement, nor under workers' compensation acts, disability benefit acts, or other employee benefit acts.

5. Negligence by the City: Consultant is not required hereunder to defend City or its agents from assertions that they were negligent, nor to indemnify and hold them harmless from liability based on City's negligence.

**F. AFFIRMATIVE ACTION/OTHER LAWS**

1. Kansas Act Against Discrimination: During the performance of this Agreement, Consultant agrees that:
  - a. Consultant will observe the provisions of the Kansas Act Against Discrimination (K.S.A. 44-1001 et seq.) and will not discriminate against any person in the performance of work under the present contract because of race, religion, color, gender, disability, national origin, ancestry, or age;
  - b. in all solicitations or advertisements for employees, Consultant will include the phrase, "equal opportunity employer," or a similar phrase to be approved by the Kansas Human Rights Commission ("commission");
  - c. if Consultant fails to comply with the way Consultant reports to the commission in accordance with the provisions of K.S.A. 44-1031 and amendments thereto, Consultant will be deemed to have breached the present contract and it may be canceled, terminated or suspended, in whole or in part, by City without penalty;
  - d. if Consultant is found guilty of a violation of the Kansas Act Against Discrimination under a decision or order of the commission which has become final, Consultant will be deemed to have breached the present contract and it may be canceled, terminated or suspended, in whole or in part, by the contracting agency; and
  - e. Consultant will include the provisions of subsections a. through d. in every subcontract or purchase order so that such provisions will be binding upon such subcontractor or vendor.
2. Exceptions to Applicability: The provisions of this Section will not apply to a contract entered into by City with Consultant if (a) Consultant employs fewer than four (4) employees during the term of such contract; or (b) Consultant's contract with City totals Ten Thousand Dollars (\$10,000) or less in aggregate.
3. Kansas Age Discrimination in Employment Act: Consultant further agrees and acknowledges that it will abide by the Kansas Age Discrimination In Employment Act (K.S.A. 44-1111 et seq.) and the applicable provision of the Americans With Disabilities Act (42 U.S.C. 12101 et seq.) as well as all other federal, state and local laws, ordinances and regulations applicable to this Project and to furnish any certification required by any federal, state or local governmental agency in connection therewith.

4. Kansas Fairness in Public Construction Contract Act: The Parties agree and acknowledge that the services provided under this Agreement are within the scope of the Kansas Fairness in Public Construction Contract Act (K.S.A. 16-1901 et seq.) and that no provision of this Agreement waives, alters, or supersedes any provisions of said Act.

**G. ENTIRE AGREEMENT**

This Agreement, including all documents and exhibits included by reference herein, constitutes the entire Agreement between the parties and supersedes all prior agreements, whether oral or written, covering the same subject matter. This Agreement may not be modified or amended except in writing mutually agreed to and accepted by both Parties to this Agreement.

**H. APPLICABLE LAW, JURISDICTION, AND VENUE**

Interpretation of this Agreement and disputes arising out of or related to this Agreement will be subject to and governed by the laws of the State of Kansas, excluding Kansas' choice-of-law principles. Jurisdiction and venue for any suit arising out of or related to this Agreement will be in the District Court of Johnson County, Kansas.

**I. NO THIRD-PARTY BENEFICIARIES**

Nothing contained herein will create a contractual relationship with, or any rights in favor of, any Third Party.

**J. INDEPENDENT CONTRACTOR**

Consultant is an independent contractor and not an agent or employee of City.

**K. DELIVERABLES**

1. Project Drawings: Project drawings which are developed by Consultant using a Computer Aided Drafting (CAD) System will be made available to City per the City of Olathe Technical Specifications and Design Criteria for Public Improvements. However, due to the potential that the information set forth on the electronic media could be modified by City, or other City consultants, unintentionally or otherwise, Consultant will remove all indices of its ownership, professional corporation name, seal, and/or involvement from each electronic display. If City provides such electronic media to others for any purpose, City will require the electronic media to be returned to City upon completion of such use. City recognizes that use of such electronic media will be at City's sole risk and without any liability risk or legal exposure by Consultant.
2. Project Documentation: All documentation provided City other than Project drawings will be furnished in either Microsoft Word file format or pdf format.

3. Conformed To Construction Drawings ("As Built" Drawings): Following construction, City and/or construction contractor will provide copies of changes and alterations made in the field during construction to Consultant to provide Conformed To Construction Drawings per the City of Olathe Technical Specifications and Design Criteria for Public Improvements. Consultant may rely on the information provided by City in preparing such documents, subject to the professional standard of care required by this Agreement.

#### **M. COVENANT AGAINST CONTINGENT FEES**

Consultant represents that it has not employed or retained any company or person, other than a bona fide employee working for Consultant, to solicit or secure this Agreement, and that it has not paid or agreed to pay any company or person, other than a bona fide employee, any fee, commission, percentage, brokerage fee, gifts, or any other consideration contingent upon or resulting from the award or making of this Agreement. For breach or violation of this representation, City may terminate this Agreement without liability or may, in its discretion, deduct from the Total Fee or otherwise recover the full amount of such fee, commission, percentage, brokerage fee, gift or contingent fee.

#### **N. NO SOLICITATION TO HIRE CITY EMPLOYEES**

1. No Solicitation to Hire: Except as otherwise provided in this section, during the term of this Agreement and for one year after the Agreement's expiration or termination, Consultant must not solicit to hire and then hire, or solicit to contract with and then contract with, any of the City's current employees involved with the oversight or implementation of this Agreement, including but not limited to the Project Manager.
2. No Restriction on City Employees: The foregoing restrictions shall not prevent City employees from affirmatively seeking employment elsewhere.
3. Liquidated Damages: The Parties agree that in the event of a breach of this provision that damages would be uncertain and difficult to accurately estimate. Therefore, if Consultant breaches this provision, Consultant agrees to pay City liquidated damages to the City equal to the annual salary of the applicable employee hired by or contracting with Consultant.

#### **O. COMPLIANCE WITH LAWS**

Consultant will abide by all applicable federal, state and local laws, ordinances and regulations applicable to the performance of Professional Services at the time the Professional Services are performed. Consultant will secure all occupational and professional licenses and permits from public and private sources necessary for the fulfillment of the obligations under this Agreement, and will provide City a copy of its certificate of good standing to conduct business in the State of Kansas with this Agreement (**Exhibit H**).

**P. TITLES, SUBHEADS AND CAPITALIZATION**

Titles and subheadings as used herein are provided only as a matter of convenience and will have no legal bearing on the interpretation of any provision of this Agreement. Some terms are capitalized throughout this Agreement but the use of or failure to use capitals has no legal bearing on the interpretation of such terms.

**Q. SEVERABILITY CLAUSE**

If any provision of this Agreement is determined to be void, invalid, unenforceable or illegal for whatever reason, such provision(s) will be null and void; provided, however, that the remaining provisions of this Agreement will be unaffected and will continue to be valid and enforceable.

**R. AMBIGUITY CLAUSE AND HIERARCHY OF INTERPRETATION**

If any ambiguity, inconsistency or conflict arises in the interpretation of this Agreement, the same will be resolved by reference first to the terms and conditions of this Agreement, and any exhibits attached hereto or incorporated by reference as noted below. In the event of any conflict or inconsistency between this Agreement and its exhibits, the following hierarchy of interpretation will apply:

1. This Agreement;
2. Scope of Services (Exhibit B);
3. City's Request for Proposals/Request for Qualifications (incorporated by reference);
4. Consultant's Response to RFP/RFQ (incorporated by reference).

***[The remainder of this page is intentionally left blank.]***



**S. EXECUTION OF CONTRACT**

The parties hereto have caused this Agreement to be executed this \_\_\_\_ day of \_\_\_\_\_ 2024.

**CITY OF OLATHE, KANSAS**

By: \_\_\_\_\_  
Mayor


ATTEST:

\_\_\_\_\_  
City Clerk (SEAL)

APPROVED AS TO FORM:

\_\_\_\_\_  
City Attorney or Deputy/Assistant City Attorney

**STANTEC CONSULTING SERVICES INC.**

By:  \_\_\_\_\_  
Allan Venema, P.Eng.  
Principal, Infrastructure Management &  
Pavement Engineering  
6425 Sheridan Drive, Suite 100  
Amherst NY 14221-4827

Digitally signed by  
Venema, Allan  
Date: 2024.03.06 10:38:37  
-05'00'

**TABLE OF CONTENTS  
OF EXHIBITS**

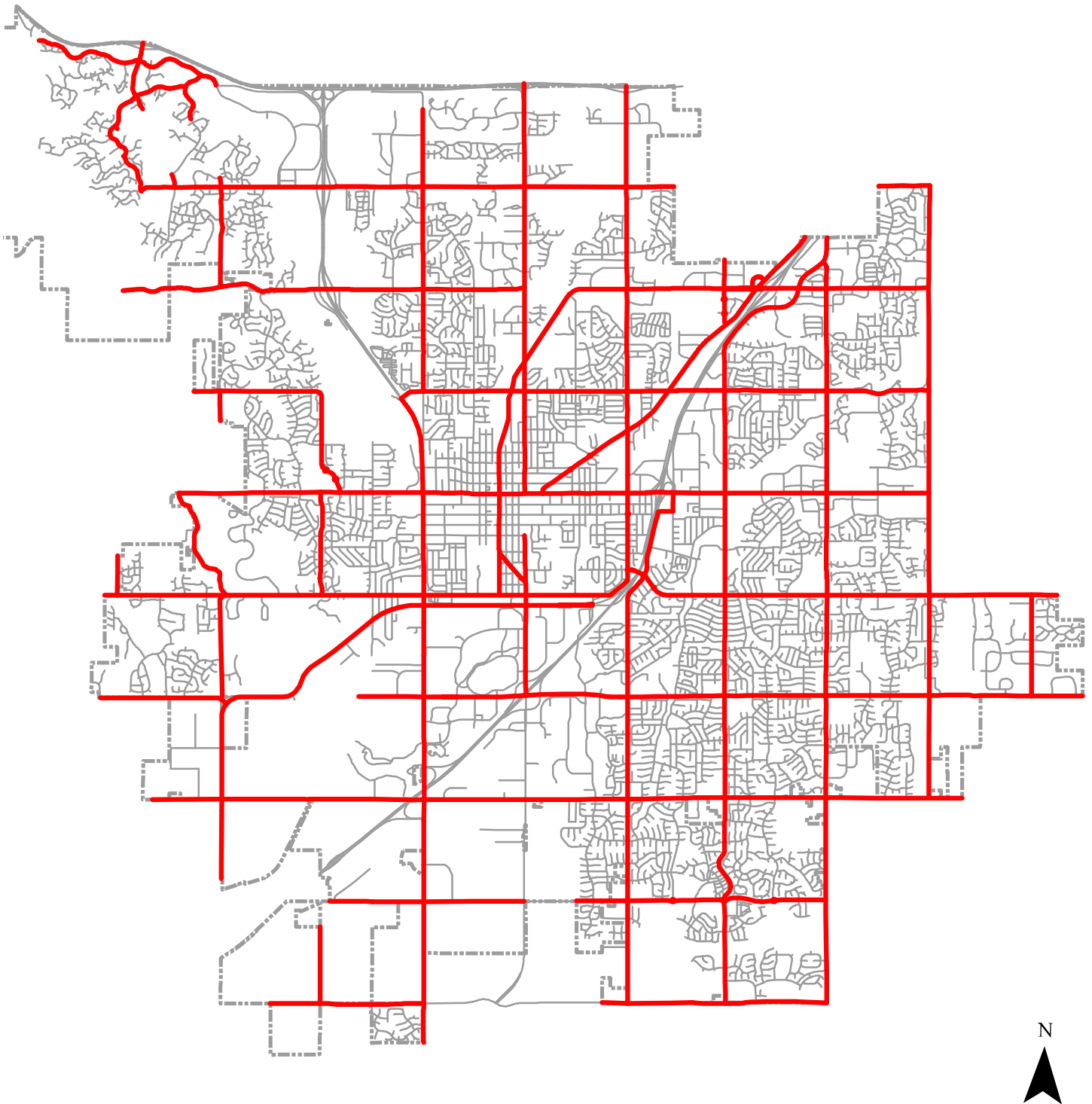
<b>Exhibit A</b>	<b>Description of Project &amp; Map</b>
<b>Exhibit B</b>	<b>Scope of Services</b>
<b>Exhibit C</b>	<b>Fee &amp; Rate Schedule</b>
<b>Exhibit D</b>	<b>Land Acquisition Checklist for Consultant Projects</b>
<b>Exhibit E</b>	<b>Utility Coordination Checklist</b>
<b>Exhibit F</b>	<b>City of Olathe Insurance Requirements</b>
<b>Exhibit G</b>	<b>Certificate of Insurance</b>
<b>Exhibit H</b>	<b>Certificate of Good Standing to Conduct Business in Kansas</b>

**EXHIBIT A**  
**Description of Project & Map**

## EXHIBIT A

### Description of Project & Map

The project includes pavement condition assessment on 136 miles of arterial streets maintained by the City of Olathe, KS.



**EXHIBIT B**  
**Scope of Services**



**Stantec Consulting Services Inc.**  
6425 Sheridan Drive, Suite 100, Amherst NY 14221-4827

January 31, 2024  
File: 174581068.012.240

**Attention:** Austin Lamparter, P.E., Project Manager  
City of Olathe  
1415 S. Robinson Drive  
Olathe, KS 66061

Dear Austin,

**Reference: City of Olathe – 2024 Pavement Condition Assessment on Arterial Roads**

As per our recent discussions, Stantec Consulting Services Inc. is pleased to provide the following scope of services and fee proposal to conduct a pavement condition assessment for the City of Olathe, KS.

## PROJECT OVERVIEW

The primary goal of this assignment is to assess the pavement condition of the City's 135.6 center-line miles of Arterial thoroughfares by means of an automated data collection vehicle. Each road will be collected in both directions for a total of 271.2 survey miles.

The project would consist of a pavement condition evaluation using Stantec's RT3000 automated pavement data collection technology. The pavement condition data would be collected in accordance with ASTM D6433, "Standard Practice for Roads and Parking Lots Pavement Condition Index Surveys" standards.

The data will be collected and referenced to specific road segment ID's. Each segment ID represents a pavement analysis section within the City's Cartegraph pavement management database.

## PAVEMENT DATA COLLECTION

Stantec's Road Tester 3000 (RT3000) incorporates the latest in mobile laser, GPS, and crack recognition technology. The RT3000 is a fully mobile solution specifically developed to accurately and efficiently collect pavement condition data. Integrated with lasers, inertial GPS, and high-definition digital imagery, the RT3000 can simultaneously collect pavement profile, rutting, surface distress, roadway geometrics, pavement and right-of-way imagery, and infrastructure assets.



Reference: City of Olathe – 2024 Pavement Condition Assessment on Arterial Roads

## Roughness and Rutting

The RT3000 incorporates an ASTM E950 certified Class I profiler configured to capture longitudinal profile measurements and International Roughness Index (IRI) determinations in both wheel paths.

The collection of longitudinal profile/roughness data is fully automated. The IRI data is collected continuously and can be summarized at specific intervals. Typically, the IRI data is expressed in terms of a Ride Comfort Index (RCI), whereby the IRI data is correlated against people's perception of ride quality on a 0 to 100 score.

The specialized profile measurement system, mounted on the front bumper of the RT3000 survey vehicle, employs two sensing devices:

1. **Laser height sensors** that measure the distance between the vehicle and the pavement surface, while the vehicle is traveling at posted speed or less.
2. **Accelerometers** that measure the vertical acceleration of the vehicle as it bounces in response to the pavement surface profile.



The RT3000 measures transverse profile and rut depths, using high precision, laser-based, height-measuring sensors. The lasers on either end of the rut bar are angled to provide the complete transverse profile across the traveled lane, without the need for extension pods. Extension pods can pose a hazard to other drivers, cyclists, and pedestrians.

## Laser Crack Measuring System (LCMS)

Stantec's RT3000 is purpose built to collect all physical pavement surface defects, utilizing our Laser Crack Measuring systems and downward imaging technology.

Stantec's LCMS uses laser line projectors, high speed cameras and advanced optics to acquire high resolution 3D profiles of the road. This unique 3D vision technology allows for automatic pavement condition assessment of asphalt, porous asphalt, chip seal, and concrete surfaces.

The LCMS acquires both 3D and 2D image data of the road surface with 1mm resolution over a 13ft lane width at survey speeds up to 60 mph.



Reference: City of Olathe – 2024 Pavement Condition Assessment on Arterial Roads

## Location Referencing System (LRS)

Stantec's RT3000 uses two systems to measure location-referencing information for all data sets, as they are collected.

The *Distance Measuring Instrument (DMI)* is used to provide a reference measurement of the vehicle as it traverses the road. This measurement provides stationing references, such as milepost location, for the collected data.

The RT3000 also uses *real-time differential GPS*, and an *Applanix POS LV inertial measurement unit (IMU)*, allowing for the provision of spatial location data (specified to +/- 3 foot accuracy) at all times, even in situations where the 'urban canyon' or tree coverage reduces the number of satellites available.



All real-time collected data can be further enhanced through the use of the Applanix POSpac processing suite. Blending the received GPS information with CORS base station data, raw GPS files from the RT will be post-processed with Applanix's POSpac software, in order to provide the highest attainable positional accuracy.



## Distress Rating Protocols

Pavement condition is generally evaluated based on the type and amount of pavement defects or distresses. For this project, pavement distresses will be rated in general accordance with the ASTM D6433 standard Practice for Roads and Parking Lots Pavement Condition Index (PCI) Surveys

Each defect or distress is measured on the basis of two components: severity and extent. **Severity** is defined as '*How bad is the defect?*' in terms of the width or degree of wear associated with the condition. An example of a severity measurement includes the width of a crack.

The second component evaluates the **extent** or '*How much is there?*' in terms of the quantity of the surface the defect covers. Examples of measures used for extent would include the number or length of transverse cracks, length of longitudinal cracking, or the pavement area affected by alligator cracking.

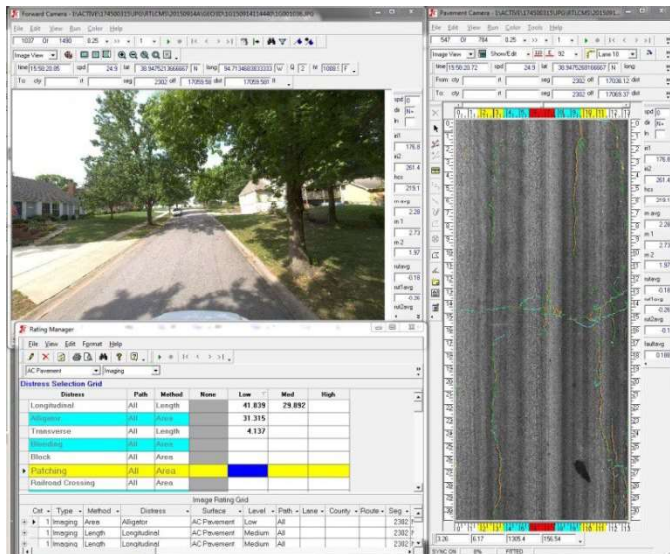


Reference: City of Olathe – 2024 Pavement Condition Assessment on Arterial Roads

### ASTM D6433 Pavement Distresses

Flexible Pavements	Rigid Pavements
<ul style="list-style-type: none"> <li>• Alligator Cracking</li> <li>• Bleeding</li> <li>• Block Cracking</li> <li>• Bumps and Sags</li> <li>• Corrugation</li> <li>• Depression</li> <li>• Edge Cracking</li> <li>• Joint Reflection Cracking</li> <li>• Lane/Shoulder Drop Off</li> <li>• Longitudinal and Transverse Cracking</li> <li>• Patching and Utility Cut Patching</li> <li>• Polished Aggregate</li> <li>• Potholes</li> <li>• Rutting</li> <li>• Shoving</li> <li>• Slippage Cracking</li> <li>• Swell</li> <li>• Weathering/Raveling</li> </ul>	<ul style="list-style-type: none"> <li>• Blow Up/Buckling</li> <li>• Corner Break</li> <li>• Divided Slab</li> <li>• Durability Crack</li> <li>• Faulting</li> <li>• Joint Seal</li> <li>• Lane/Shoulder Drop Off</li> <li>• Linear Cracking</li> <li>• Patching (Large)</li> <li>• Patching (Small)</li> <li>• Polished Aggregate</li> <li>• Popouts</li> <li>• Pumping</li> <li>• Punchouts</li> <li>• Scaling</li> <li>• Shrinkage Crack</li> <li>• Spalling Corner</li> <li>• Spalling Joint</li> </ul>

### Automated Pavement Distress Data Processing



The collected pavement imagery from the RT3000 is processed through Stantec's Imaging Workstation. The LCMS system automatically detects and analyzes cracks, lane markings, ruts, macro-texture, patches, and potholes. Cracks are classified as per ASTM D6433 and evaluated for severity, with measurements accurate to within 1 mm transversally and 0.5 mm for depth and tagged with a linear reference and GPS coordinates. The distress data is processed continuously, **not at reduced sample sizes**, and summarized at user-defined intervals.

Reference: City of Olathe – 2024 Pavement Condition Assessment on Arterial Roads

Upon processing the automated distress data, a manual quality review is performed on the pavement images in accordance with *NCHRP Synthesis 401 – Quality Management of Pavement Condition Data Collection' by the Transportation Research Board*. By utilizing the 2D components of the imaging system, the pavement distress types, severity, and computed extents (i.e. count/length/area) are manually reviewed to ensure conformance with ASTM D6433 distress identification protocols. Any required adjustments can be made directly to the data.

The surface distress data will be rated continuously in the travelled lane and summarized at the sectional level. As well, a resulting **Pavement Condition Index (PCI)** will be provided for each roadway section included in the survey.

## Digital Images

High-resolution digital images will be collected during the pavement condition survey, allowing Stantec to gather additional imagery for distress rating QA/QC. Our 360° camera system is composed of six 5MP cameras for individual or panoramic views.



Reference: City of Olathe – 2024 Pavement Condition Assessment on Arterial Roads

## DELIVERABLES

The deliverable to the City will be a street section listing (xlsx or mdb format) with sectional average IRI values, distress severity and extent summations, and resulting RCI, and PCI scores. The pavement condition data will be supplied in a pre-defined format for upload to the City's Cartegraph OMS system.

## FEE SCHEDULE

The following fee schedule is based on the project scope stated herein. All fees are exclusive of any applicable taxes.

Task		Quantity	Units	Unit Rate	Total
<b>1.0</b>	<b>Project Initiation &amp; Project Management</b>				
1.1	Project Initiation & Project Management	1	Lump Sum	\$ 5,500.00	\$ 5,500.00
1.2	Field Survey SetUp (Specifications & Routing Map)	1	Lump Sum	\$ 4,400.00	\$ 4,400.00
<b>2.0</b>	<b>Field Survey</b>				
2.1	RT3000 Mobilization	1	Lump Sum	\$ 700.00	\$ 700.00
2.2	RT3000 Pavement Survey (Up to 280 survey miles)	1	Lump Sum	\$ 32,000.00	\$ 32,000.00
<b>3.0</b>	<b>Data Processing and Delivery</b>				
3.1	Pavement Data Processing and QA/QC	1	Lump Sum	\$ 7,700.00	\$ 7,700.00
3.2	PCI Determinations & Formating for Cartegraph	1	Lump Sum	\$ 3,200.00	\$ 3,200.00
<b>Project Total</b>					<b>\$ 53,500.00</b>

*Note: Project will be invoiced monthly on a percent complete basis*

## SCHEDULE

The following timelines are anticipated for this assignment.

- Pavement Condition Survey..... May/ June 2024
- Data Processing and Delivery.....July/ August 2024

Reference: City of Olathe – 2024 Pavement Condition Assessment on Arterial Roads

## TERMS AND CONDITIONS

No work will begin until a mutually acceptable Contract has been executed with the City. Any City-supplied Contract, Services Agreement or Purchase Order Terms will require Stantec's review and approval by Risk Management prior to execution. This quotation will remain valid for 90 days.

We trust the above scope and fees will meet with your expectations. We look forward to working with the City of Olathe on this assignment.

Regards,

**Stantec Consulting Services Inc.**



Digitally signed by Venema,  
Allan  
Date: 2024.02.01 10:46:48 -05'00'

---

**Allan Venema** P.Eng.  
Principal,  
Infrastructure Management & Pavement Engineering  
Phone: 416-799-7847  
allan.venema@stantec.com

# **EXHIBIT C** **Fee & Rate Schedule**

The following fee schedule is based on the project scope stated herein. All fees are exclusive of any applicable taxes.

Task		Quantity	Units	Unit Rate	Total
<b>1.0</b>	<b>Project Initiation &amp; Project Management</b>				
1.1	Project Initiation & Project Management	1	Lump Sum	\$ 5,500.00	\$ 5,500.00
1.2	Field Survey SetUp (Specifications & Routing Map)	1	Lump Sum	\$ 4,400.00	\$ 4,400.00
<b>2.0</b>	<b>Field Survey</b>				
2.1	RT3000 Mobilization	1	Lump Sum	\$ 700.00	\$ 700.00
2.2	RT3000 Pavement Survey (Up to 280 survey miles)	1	Lump Sum	\$ 32,000.00	\$ 32,000.00
<b>3.0</b>	<b>Data Processing and Delivery</b>				
3.1	Pavement Data Processing and QA/QC	1	Lump Sum	\$ 7,700.00	\$ 7,700.00
3.2	PCI Determinations & Formatting for Cartegraph	1	Lump Sum	\$ 3,200.00	\$ 3,200.00
				<b>Project Total</b>	<b>\$ 53,500.00</b>

*Note: Project will be invoiced monthly on a percent complete basis*

## EXHIBIT D

### LAND ACQUISITION CHECKLIST FOR CONSULTANT PROJECTS

**Complete submittal of these documents is required 7 months prior to bid opening.**

\_\_\_ Determine what types of easements are required for each tract:

i.e. Street Dedication; Permanent Street Easement; Temporary Construction Easement; Permanent Utility Easement; Permanent Drainage Easement; Permanent Sanitary Sewer Easement; Permanent Waterline Easement; Permanent Sidewalk & Utility Easement; Permanent Wall Easement; Permanent Bike Trail, Utility & Recreational Easement.

\_\_\_ REQUIRED INFORMATION:

- a) City Project No. and Project Name
- b) Current Ownership (both husband and wife's name, even if only owned by one spouse)
  - 1) If a trust, the name and date of the trust
  - 2) If a corporation or LLC, state of incorporation or formation
  - 3) If partnership, full name of partnership
- c) Johnson County Parcel ID number
- d) Number the tracts in the project (up one side and down the other) (Tract No. \_\_)
- e) Situs Address
- f) Mailing Address
- g) Legal description of the new taking, including total square footage
- h) Tract map
- i) Ownership & Encumbrance (O&E) title report, not more than 9 months since certification, showing current ownership, liens, mortgages, existing easements, leases (if recorded) and any other encumbrances upon the property. This requirement also includes tracts where only a temporary construction easement is needed.
- j) Copy of last deed(s) of record. If an undivided interest is conveyed in the deed, provide copies of all deeds which comprise the whole interest. (If undivided one-half is conveyed to husband's trust and undivided one-half interest is conveyed to wife's trust, provide copies of both deeds.
- k) Common errors to avoid – verify marital status. *BEFORE SUBMITTING DOCUMENTS TO CITY OF OLATHE VERIFY THE O&E'S TO ENSURE OWNERSHIP HAS NOT CHANGED.*



\_\_\_\_ Tract Map will be considered complete when it contains the following information (example available upon request):

- a) Map of entire property (May not be possible on large parcels and still showing legible taking) showing location of the proposed easement(s) and existing easements. Any trees to be removed, fences to be moved, monument signs, and irrigation systems should be noted on the plans. Outlines of buildings are to be shown on the plans so that it is evident how close the easements are to the existing building. Dimensions/bearings for easements to be clearly shown on map. It is acceptable to place all easements on one exhibit as long as each easement is easily identified. If the exhibit is too cluttered, then the easements should be placed on separate exhibits with permanent easements on one exhibit and temporary easements on a separate exhibit. EASEMENT SHALL BE CLEARLY VISIBLE ON DRAWING. Johnson County Register of Deeds scans the recorded easement in black and white, so be aware of this when drawing the easement on the tract map. Make sure easement area can easily be seen in black and white.
- b) Property owner's names, mailing address, situs address (if different from mailing address), Johnson County Parcel ID number, and tract number.
- c) Map of tract should show dimensions of tract and property lines clearly marked.
- d) Common errors to avoid: North arrow pointing in the wrong direction, verification that the easement legal description closes upon itself.

\_\_\_\_ Legal description and tract maps shall be signed by a Registered Land Surveyor stating that the ownership, easement legal descriptions, description in the deed for the entire tract only when a total property taking is occurring, and surveys for the easement area have been personally reviewed and determined to be accurate in accordance with the plans for the project. The consultant shall make corrections, at no cost to the City, to fix errors determined by the City or the Johnson County Register of Deeds that are the responsibility of the Registered Land Surveyor. These errors may include but are not limited to clerical errors, inconsistencies between the easement legal description and tract map, easement legal description not closing upon itself, or other errors in requirements on this checklist. **Both legal description and tract map(s) shall be marked Exhibit "A" as referenced in the easement documents.**

\_\_\_\_ Appropriate easement document in Word (sometimes referred to as "front end" document). PDF's are available on the City's website (<http://www.olatheks.org/government/public-works/dedications-easements>). Word copies can be obtained by contacting the Olathe Public Works Department Project Manager.

\_\_\_\_ Submit Documents to Public Works staff in electronic format:

- Word copy of legal description
- PDF of signed and sealed legal description

- Tract map signed and sealed
- Word copy of easement ("front end") document
- O&E title report
- Last deed of record



## EXHIBIT E

# Utility Coordination

### Olathe CIP projects

Each project is unique and can be expected to have varying degrees of impact to utilities ranging from minor adjustments to complex and lengthy relocations. A successful utility coordination process has three main facets simplified to:

- What is in conflict
- Where it will be moved
- How long it will take to move it

The checklist below is a tool to help with this process.

The city's project design firm will have primary responsibility for Coordination and Design phases with participation from the city staff. The city staff will have primary responsibility for Construction (utility relocate) phases. City staff may consult with the project design firm if changes or issues arise during the construction phase.

Please also reference APWA Section 5900 – Best Management Practices: Utility Coordination for CIP

- ☐ **Design Firm/Surveyor call in locates early in the project design phases**
  - Note – often utilities will be labeled clear or fail to mark lines as part of a design ticket. Non-response tickets may be required. Additional issues shall be reported to the City for assistance.
- ☐ **Project notice to utilities as soon as utilities in the project footprint have been identified (notify all utilities listed on KS One Call tickets)**
  - Describe project improvements
  - Request detailed existing mapping
  - Request documentation of any private easements and claims for reimbursement
  - Provide a general schedule and include a response by date
  - Copy Project Manager and Utility Coordinator
- ☐ **Survey locates (as much detail as possible) once all utilities have been marked as per locate requests**
  - Survey locate marks by provider
  - Survey utility boxes, vaults, and other structures (make note of provider)
  - Make note of overhead infrastructure in addition to each power pole.
    - Transformers, COM attachers, power or COM risers, guy wires, etc.
- ☐ **Incorporate survey into project plans for 30% submittal**

(Any utility line work on plans shall only be from survey of utility marks or pothole points. Small gaps can be filled by mapping info and needs to be noted as such)

  - Label lines and facilities **by provider**
    - Include boxes, vaults, and other structures (by provider)
    - Note overhead infrastructure in addition to each power pole
      - Transformers, COM attachers, power or COM risers, guy wires, etc...
    - See **EXHIBIT E.1** for examples of how information will need to be captured.

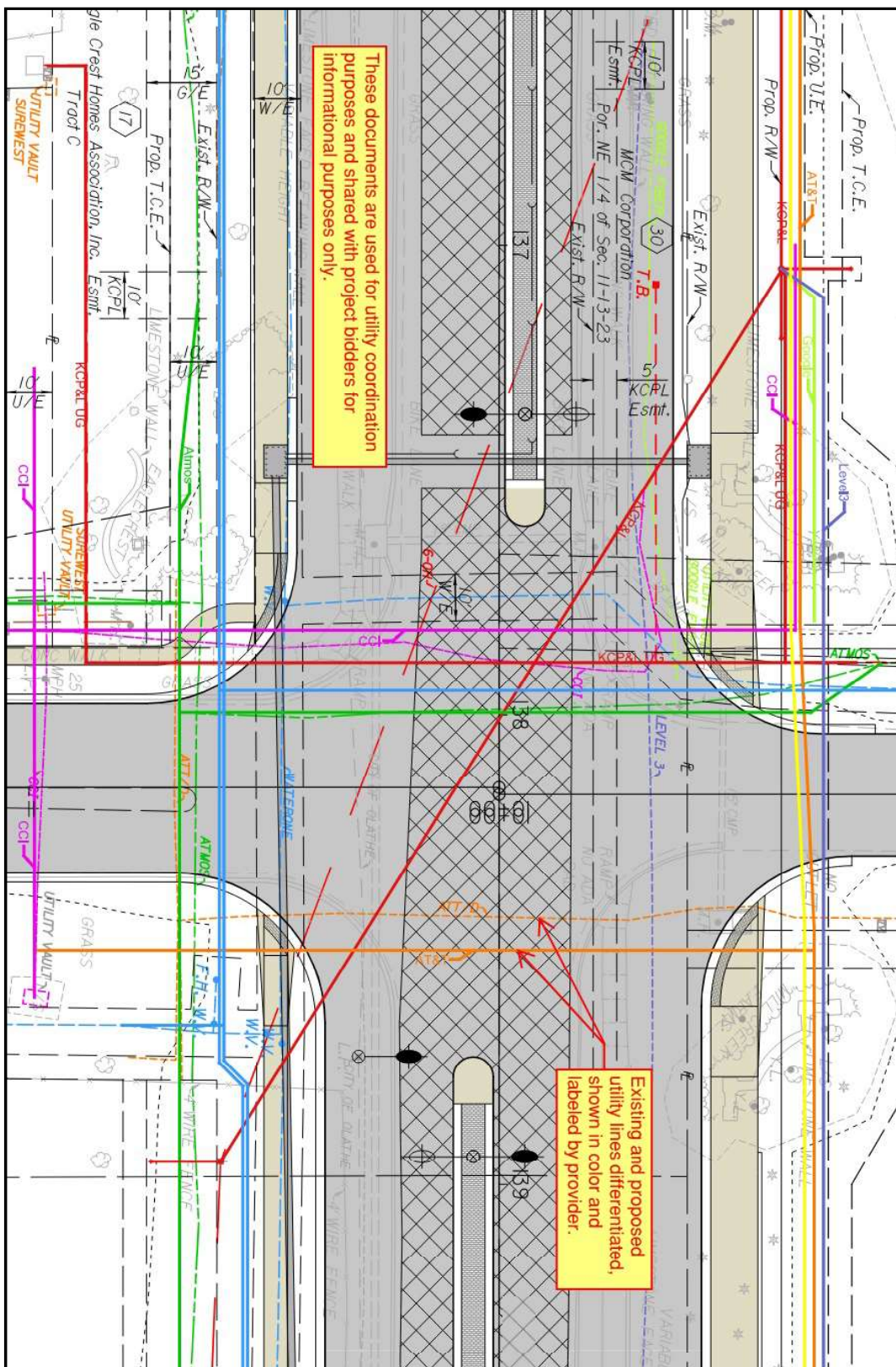
- Some providers may only be labeled by CATV and will require further coordination to confirm ownership of lines.
  - Review existing mapping to help identify any lines or other infrastructure that may have been missed during locates and survey.
  - Utility lines shall NOT be added to project plans based on mapping or as-built info only.
  - Utilize utility information obtained to minimize utility impacts when possible during project design.
- ☐ **Project design firm to generate a master utility plan (may not apply to all projects)**
- Utilities labeled by provider and in applicable colors.
  - Denote utilities that are to be abandoned or vacated.
  - Recommend alternate routes to avoid points of conflict such as proposed storm crossing or conflicts with other utility relocations when possible.
  - Continue to update sheets as utility relocate plans are received.
- ☐ **Conflict analysis based on survey, mapping, and other info**
- X-Y locations that may be impacted by Z axis improvements (pothole recommendations)
    - Consider not only project improvements but also constructability.
      - Over dig for walls, storm sewers, etc.
      - Additional depth for rock
      - *Potholing is the responsibility of each individual utility*
        - The City's project team may elect to also pothole private utilities when it is determined beneficial to the project.
  - The project design firm shall make a list of potential conflict points for discussion at the utility meetings. (Individual utility companies should also be doing the same)
    - When making a list, keep in mind utility locates are not always accurate so infrastructure near proposed improvements may need to be added to the list for discussion (share this list for comment by the City).
- ☐ **Project design firm to help prioritize location of utilities when overlapping potential relocate paths are identified (ongoing throughout project).**
- Identify opportunities for joint trenches when possible or in tight areas of the project.
- ☐ **Design Firm to notify all parties when project plans change (ongoing throughout project).**
- Reevaluate/conflict analysis in areas of change
- ☐ **Pre-utility meeting – “plan of attack discussion” prior to utility meeting #1 (city and design team)**
- What is the utility due date?
  - What are the utility schedule milestones?
    - Start to develop overall utility schedule.
  - Are there project pinch points?
  - Identify any utilities claiming private easement/ reimbursement.
  - Is there project phasing that should be prioritized by utilities too?
  - How are utility meetings to be setup for the project? Joint meetings then individual?
  - Other?

- ☐ **Utility Meeting #1 around 30% plan submittal**
  - Schedule
  - Request any existing mapping or private easement information not yet collected.
  - Early project overview and potential opportunity to adjust project improvements around utilities.
  - Distribute meeting minutes.
- ☐ **Individual Meetings ongoing as needed**
  - Schedule
  - Overall review of any likely points of conflict or other concern.
  - Discussion of where/how utilities will relocate.
    - *Example: if a proposed relocate is navigating storm sewers and grade cuts, is there a different path to simplify the relocate and setup the project for success?*
  - Distribute meeting minutes.
- ☐ **Utility Meeting #2 before 60% plans**
  - Schedule
  - Discussing progression of relocate plans
  - Distribute meeting minutes.
- ☐ **Utility providers to generate relocate plans on a timeframe agreed upon during coordination meetings.**
  - The design firm and City shall review relocate plans.
    - Consider including relocate plans in master utility plans
  - The design firm will gather any comments and respond accordingly to the utility.
  - Further review of revisions shall continue until the project team has no additional comments to relocate plans.
  - The design firm will incorporate relocate plans in to project plans and master utility plan sheets.

**HANDOFF POINT WHERE PRIMARY DUTIES SHIFT TO THE CITY UTILITY COORDINATOR (*Design firm may have incidental involvement as needed*). A FEW OF THESE DUTIES ARE NOTED BELOW:**

- ☐ **Utility Company and/or contractor to obtain a ROW permit prior to starting.**
  - The city will review the permit to confirm it matches previously reviewed relocate plans.
- ☐ **Utility Coordinator will check on utility construction, progress, and compliance with relocate plans.**
- ☐ **Utility Coordinator to look for potential oversights or other points of conflict not covered in the relocate plans.**
  - Minor issues may be addressed in the field by the City Utility Coordinator.
  - The City Utility Coordinator will reengage the project team and utility provider with any issues found requiring additional coordination.
- ☐ **Utility Coordinator to provide design firm and PM periodic updates on progress.**

**EXHIBIT E.1**



## EXHIBIT F

### CITY OF OLATHE INSURANCE REQUIREMENTS

**A. Insurance.** Consultant agrees to secure and maintain throughout the duration of this Agreement insurance of such types and in at least such amounts as set forth below from a Kansas authorized insurance company which carries a Best's Policyholder rating of "A-" or better and carries at least a Class "VII" financial rating or better, unless otherwise agreed to by City:

1. Commercial General Liability: City must be listed by ISO endorsement or its equivalent as an additional insured on a primary and noncontributory basis on any commercial general liability policy of insurance. The insurance must apply separately to each insured against whom claim is made or suit is brought, subject to the limits of liability.

**Limits:** Per Occurrence, including Personal & Advertising Injury and Products/Completed Operations: \$1,000,000; General Aggregate: \$2,000,000.

2. Business Automobile Insurance: City must be listed by ISO endorsement or its equivalent as an additional insured on a primary and noncontributory basis on any automobile policy of insurance. The insurance must apply separately to each insured against whom claim is made or suit is brought, subject to the limits of liability.

**Limits:** Any Auto; OR All Owned Autos; Hired Autos; and Non-Owned Autos: Per occurrence, combined single limit: \$500,000  
Notwithstanding the foregoing, if Consultant does not own any automobiles, then Consultant must maintain Hired and Non-Owned Auto insurance.

3. Worker's Compensation and Employer's Liability: Workers compensation insurance must protect Consultant against all claims under applicable state Worker's Compensation laws at the statutory limits, and employer's liability with the following limits.

**Limits:** \$500,000 Each Accident/\$500,000 Policy Limit/\$500,000 Each Employee

4. Professional Liability: Consultant must maintain throughout the duration of this Agreement and for a period of three (3) years after the termination of this Agreement, Professional Liability Insurance.

**Limits:** Each Claim: \$1,000,000; General Aggregate: \$1,000,000

5. Cyber Insurance: If Consultant will have access to the City's network or City's data, Consultant must maintain throughout the duration of this Agreement and for a period of three (3) years after the termination of this Agreement. Coverage must

include: Cyber Incident/Breach Response and Remediation Expenses, Digital Data Recovery, Privacy and Network Security Liability, and Notification Expense.

**Limits:** Per claim, each insuring agreement: \$1,000,000; Aggregate: \$1,000,000

- B. Exposure Limits.** The above are minimum acceptable coverage limits and do not infer or place a limit on the liability of Consultant nor has City assessed the risk that may be applicable to Consultant. Consultant must assess its own risks and if it deems appropriate and/or prudent maintain higher limits and/or broader coverage. The Consultant's insurance must be primary, and any insurance or self-insurance maintained by the City will not contribute to, or substitute for, the coverage maintained by Consultant.
- C. Costs.** The cost of insurance will be included in the Consultant's bid or proposal and must be at Consultant's expense. Any and all deductibles or self-insurance in the above described coverages will be the responsibility and at the sole risk of the Consultant.
- D. Verification of Coverage**
1. Consultant must provide a certificate of insurance on ISO form or equivalent, listing the City as the certificate holder, and additional insured endorsements for the requested coverages.
  2. Any self-insurance must be approved in advance by the City and specified on the certificate of insurance. Additionally, when self-insured, the name, address, and telephone number of the claim's office must be noted on the certificate or attached in a separate document.
  3. When any of the insurance coverages are required to remain in force after final payment, additional certificates with appropriate endorsements evidencing continuation of such coverage must be submitted along with the application for final payment.
  4. For cyber insurance, the certificate of insurance confirming the required protection must confirm the required coverages in the "Additional Comments" section or provide a copy of the declarations page confirming the details of the cyber insurance policy.
- E. Cancellation.** No required coverage may be suspended, voided, or canceled, except after Consultant has provided thirty (30) days' advance written notice to the City.
- F. Subconsultant's Insurance:** If a part of this Agreement is to be sublet, Consultant must either cover all subconsultants under its insurance policies; OR require each subconsultant not so covered to meet the standards stated herein.

**EXHIBIT G**  
**Certificate of Insurance**





# CERTIFICATE OF LIABILITY INSURANCE

DATE (MM/DD/YYYY)

5/1/2024

2/28/2024

THIS CERTIFICATE IS ISSUED AS A MATTER OF INFORMATION ONLY AND CONFERS NO RIGHTS UPON THE CERTIFICATE HOLDER. THIS CERTIFICATE DOES NOT AFFIRMATIVELY OR NEGATIVELY AMEND, EXTEND OR ALTER THE COVERAGE AFFORDED BY THE POLICIES BELOW. THIS CERTIFICATE OF INSURANCE DOES NOT CONSTITUTE A CONTRACT BETWEEN THE ISSUING INSURER(S), AUTHORIZED REPRESENTATIVE OR PRODUCER, AND THE CERTIFICATE HOLDER.

**IMPORTANT:** If the certificate holder is an **ADDITIONAL INSURED**, the policy(ies) must have **ADDITIONAL INSURED** provisions or be endorsed. If **SUBROGATION** IS **WAIVED**, subject to the terms and conditions of the policy, certain policies may require an endorsement. A statement on this certificate does not confer rights to the certificate holder in lieu of such endorsement(s).

<b>PRODUCER</b> Lockton Companies 444 W. 47th Street, Suite 900 Kansas City MO 64112-1906 (816) 960-9000 kcasu@lockton.com	<b>CONTACT NAME:</b> <b>PHONE (A/C. No. Ext):</b> <b>E-MAIL ADDRESS:</b> <b>FAX (A/C. No):</b>
<b>INSURED</b> 1415077 STANTEC CONSULTING SERVICES INC. 410 17TH STREET SUITE 1400 DENVER CO 80202-4427	<b>INSURER(S) AFFORDING COVERAGE</b> <b>INSURER A:</b> Travelers Property Casualty Company of America <b>INSURER B:</b> Berkshire Hathaway Specialty Insurance Company <b>INSURER C:</b> <b>INSURER D:</b> <b>INSURER E:</b> <b>INSURER F:</b>
	<b>NAIC #</b> 25674 22276

**COVERAGES****CERTIFICATE NUMBER:** 20331809**REVISION NUMBER:** XXXXXXXX

THIS IS TO CERTIFY THAT THE POLICIES OF INSURANCE LISTED BELOW HAVE BEEN ISSUED TO THE INSURED NAMED ABOVE FOR THE POLICY PERIOD INDICATED. NOTWITHSTANDING ANY REQUIREMENT, TERM OR CONDITION OF ANY CONTRACT OR OTHER DOCUMENT WITH RESPECT TO WHICH THIS CERTIFICATE MAY BE ISSUED OR MAY PERTAIN, THE INSURANCE AFFORDED BY THE POLICIES DESCRIBED HEREIN IS SUBJECT TO ALL THE TERMS, EXCLUSIONS AND CONDITIONS OF SUCH POLICIES. LIMITS SHOWN MAY HAVE BEEN REDUCED BY PAID CLAIMS.

INSR LTR	TYPE OF INSURANCE	ADDL INSD	SUBR WVD	POLICY NUMBER	POLICY EFF (MM/DD/YYYY)	POLICY EXP (MM/DD/YYYY)	LIMITS
B	<input checked="" type="checkbox"/> <b>COMMERCIAL GENERAL LIABILITY</b> <input type="checkbox"/> CLAIMS-MADE <input checked="" type="checkbox"/> OCCUR <input checked="" type="checkbox"/> <b>CONTRACTUAL/CROSS</b> <input checked="" type="checkbox"/> <b>XCU COVERED</b> GEN'L AGGREGATE LIMIT APPLIES PER: <input type="checkbox"/> POLICY <input checked="" type="checkbox"/> PRO-JECT <input checked="" type="checkbox"/> LOC OTHER:	Y	Y	47 - GLO-307584	5/1/2023	5/1/2024	EACH OCCURRENCE \$ 2,000,000 DAMAGE TO RENTED PREMISES (Ea occurrence) \$ 1,000,000 MED EXP (Any one person) \$ 25,000 PERSONAL & ADV INJURY \$ 2,000,000 GENERAL AGGREGATE \$ 4,000,000 PRODUCTS - COMP/OP AGG \$ 2,000,000 \$
A	<input checked="" type="checkbox"/> <b>AUTOMOBILE LIABILITY</b> <input checked="" type="checkbox"/> ANY AUTO <input type="checkbox"/> OWNED AUTOS ONLY <input type="checkbox"/> SCHEDULED AUTOS <input type="checkbox"/> HIRED AUTOS ONLY <input type="checkbox"/> NON-OWNED AUTOS ONLY	Y	Y	TC2J - CAP - 8E086819 (AOS) TJ - BAP - 8E086820	5/1/2023 5/1/2023	5/1/2024 5/1/2024	COMBINED SINGLE LIMIT (Ea accident) \$ 1,000,000 BODILY INJURY (Per person) \$ XXXXXXXX BODILY INJURY (Per accident) \$ XXXXXXXX PROPERTY DAMAGE (Per accident) \$ XXXXXXXX \$ XXXXXXXX
B	<input checked="" type="checkbox"/> <b>UMBRELLA LIAB</b> <input checked="" type="checkbox"/> OCCUR <input type="checkbox"/> <b>EXCESS LIAB</b> <input type="checkbox"/> CLAIMS-MADE DED <input type="checkbox"/> RETENTION \$	N	Y	47 - UMO-307585	5/1/2023	5/1/2024	EACH OCCURRENCE \$ 5,000,000 AGGREGATE \$ 5,000,000 \$ XXXXXXXX
A	<b>WORKERS COMPENSATION AND EMPLOYERS' LIABILITY</b> ANY PROPRIETOR/PARTNER/EXECUTIVE OFFICER/MEMBER EXCLUDED? (Mandatory in NH) If yes, describe under DESCRIPTION OF OPERATIONS below	Y/N <input checked="" type="checkbox"/> N	Y	UB - 3P635310 (AOS) UB - 3P533004 (MA, WI) EXCEPT FOR OH ND WA WY	5/1/2023 5/1/2023	5/1/2024 5/1/2024	<input checked="" type="checkbox"/> PER STATUTE <input type="checkbox"/> OTH-ER E.L. EACH ACCIDENT \$ 1,000,000 E.L. DISEASE - EA EMPLOYEE \$ 1,000,000 E.L. DISEASE - POLICY LIMIT \$ 1,000,000

**DESCRIPTION OF OPERATIONS / LOCATIONS / VEHICLES** (ACORD 101, Additional Remarks Schedule, may be attached if more space is required)

RE: 2024 PAVEMENT CONDITION SURVEY. SURVEY OF ALL ROADS IN THE CITY OF OLATHE FOR THE PURPOSE OF PROVIDING AN UP TO DATE SCORE OF THE PAVEMENT CONDITION. CITY OF OLATHE IS ADDITIONAL INSURED AS RESPECTS GENERAL LIABILITY AND AUTO LIABILITY, AND THESE COVERAGES ARE PRIMARY AND NON-CONTRIBUTORY, AS REQUIRED BY WRITTEN CONTRACT. WAIVER OF SUBROGATION APPLIES TO GENERAL LIABILITY, AUTO LIABILITY, UMBRELLA/EXCESS LIABILITY, AND WORKERS COMPENSATION/EMPLOYER'S LIABILITY, WHERE ALLOWED BY STATE LAW AND AS REQUIRED BY WRITTEN CONTRACT.

**CERTIFICATE HOLDER****CANCELLATION** See Attachments

**20331809**  
CITY OF OLATHE  
100 E SANTE FE  
PO BOX 768  
OLATHE, KS 66051-0768

SHOULD ANY OF THE ABOVE DESCRIBED POLICIES BE CANCELLED BEFORE THE EXPIRATION DATE THEREOF, NOTICE WILL BE DELIVERED IN ACCORDANCE WITH THE POLICY PROVISIONS.

AUTHORIZED REPRESENTATIVE

© 1988-2015 ACORD CORPORATION. All rights reserved.



STANTEC CONSULTING.; 1415077



20331809  
CITY OF OLATHE  
100 E SANTE FE, PO BOX 768  
OLATHE,, KS 66051-0768

**Dear Valued Client:**

In our continuing effort to provide timely certificate delivery, Lockton Companies is utilizing paperless delivery of Certificates of Insurance. To ensure electronic delivery for future renewals of this certificate, we need your email address. Please contact us via the email below and reference Certificate ID: **20331809**. **You must reference this Certificate ID number in order for us to complete this process.**

- Ø **Certificate ID: 20331809**
- Ø **Email: [kcasu@Lockton.com](mailto:kcasu@Lockton.com)**
- Ø **Subject Line: ASU E-Delivery**

**NOTES:**

- Signing up for this will **NOT** sign you up for any solicitation emails - your email will only be used to forward updated or renewal certificates direct from Lockton.
- Your certificates will come via a **secure link** to our database. If you do need a pdf of a certificate, please email [kcasu@lockton.com](mailto:kcasu@lockton.com) to request one.
- If you received this letter with a certificate via email, no further action on your part is necessary.
- If you no longer need this certificate, please contact us at [kcasu@lockton.com](mailto:kcasu@lockton.com), reference the Holder ID number and use this subject line: "Certificate Removal"

Thank you for your cooperation.

**Lockton Companies**  
**Account Services Unit**

POLICY NUMBER: 47 - GLO-307584

COMMERCIAL GENERAL LIABILITY  
CG 20 10 04 13**THIS ENDORSEMENT CHANGES THE POLICY. PLEASE READ IT CAREFULLY.****ADDITIONAL INSURED – OWNERS, LESSEES OR  
CONTRACTORS – SCHEDULED PERSON OR  
ORGANIZATION**

This endorsement modifies insurance provided under the following:

COMMERCIAL GENERAL LIABILITY COVERAGE PART

**SCHEDULE**

Name Of Additional Insured Person(s) Or Organization(s)	Location(s) Of Covered Operations
<b>ANY SUCH PERSON OR ORGANIZATION BUT ONLY TO THE EXTENT REQUIRED BY A WRITTEN CONTRACT EXECUTED PRIOR TO THE "OCCURANCE" FOR OFFENSE.</b>	ALL LOCATIONS COVERED UNDER THIS POLICY, FOR LIABILITIES ARISING OUT OF OUR NAMED INSURED'S ACTIVITIES ONLY.
Information required to complete this Schedule, if not shown above, will be shown in the Declarations.	

**A. Section II – Who Is An Insured** is amended to include as an additional insured the person(s) or organization(s) shown in the Schedule, but only with respect to liability for "bodily injury", "property damage" or "personal and advertising injury" caused, in whole or in part, by:

1. Your acts or omissions; or
2. The acts or omissions of those acting on your behalf;

in the performance of your ongoing operations for the additional insured(s) at the location(s) designated above.

However:

1. The insurance afforded to such additional insured only applies to the extent permitted by law; and
2. If coverage provided to the additional insured is required by a contract or agreement, the insurance afforded to such additional insured will not be broader than that which you are required by the contract or agreement to provide for such additional insured.

**B.** With respect to the insurance afforded to these additional insureds, the following additional exclusions apply:

This insurance does not apply to "bodily injury" or "property damage" occurring after:

1. All work, including materials, parts or equipment furnished in connection with such work, on the project (other than service, maintenance or repairs) to be performed by or on behalf of the additional insured(s) at the location of the covered operations has been completed; or
2. That portion of "your work" out of which the injury or damage arises has been put to its intended use by any person or organization other than another contractor or subcontractor engaged in performing operations for a principal as a part of the same project.

- C. With respect to the insurance afforded to these additional insureds, the following is added to **Section III – Limits Of Insurance:**

If coverage provided to the additional insured is required by a contract or agreement, the most we will pay on behalf of the additional insured is the amount of insurance:

1. Required by the contract or agreement; or

2. Available under the applicable Limits of Insurance shown in the Declarations; whichever is less.

This endorsement shall not increase the applicable Limits of Insurance shown in the Declarations.

POLICY NUMBER: 47 - GLO-307584

COMMERCIAL GENERAL LIABILITY  
CG 20 37 04 13**THIS ENDORSEMENT CHANGES THE POLICY. PLEASE READ IT CAREFULLY.****ADDITIONAL INSURED – OWNERS, LESSEES OR  
CONTRACTORS – COMPLETED OPERATIONS**

This endorsement modifies insurance provided under the following:

COMMERCIAL GENERAL LIABILITY COVERAGE PART  
PRODUCTS/COMPLETED OPERATIONS LIABILITY COVERAGE PART**SCHEDULE**

Name Of Additional Insured Person(s) Or Organization(s)	Location And Description Of Completed Operations
ANY SUCH PERSON OR ORGANIZATION BUT ONLY TO THE EXTENT REQUIRED BY A WRITTEN CONTRACT EXECUTED PRIOR TO THE "OCCURANCE" FOR OFFENSE.	ANY LOCATION OR PROJECT WHERE YOU ARE REQUIRED TO PROVIDE ADDITIONAL INSURED STATUS IN A WRITTEN CONTRACT OR WRITTEN AGREEMENT , EXCEPT WHERE SUCH CONTRACT OR AGREEMENT IS PROHIBITED BY LAW
Information required to complete this Schedule, if not shown above, will be shown in the Declarations.	

**A. Section II – Who Is An Insured** is amended to include as an additional insured the person(s) or organization(s) shown in the Schedule, but only with respect to liability for "bodily injury" or "property damage" caused, in whole or in part, by "your work" at the location designated and described in the Schedule of this endorsement performed for that additional insured and included in the "products-completed operations hazard".

However:

1. The insurance afforded to such additional insured only applies to the extent permitted by law; and
2. If coverage provided to the additional insured is required by a contract or agreement, the insurance afforded to such additional insured will not be broader than that which you are required by the contract or agreement to provide for such additional insured.

**B. With respect to the insurance afforded to these additional insureds, the following is added to Section III – Limits Of Insurance:**

If coverage provided to the additional insured is required by a contract or agreement, the most we will pay on behalf of the additional insured is the amount of insurance:

1. Required by the contract or agreement; or
  2. Available under the applicable Limits of Insurance shown in the Declarations;
- whichever is less.

This endorsement shall not increase the applicable Limits of Insurance shown in the Declarations.

## ENDORSEMENT

This endorsement, effective 12:01 AM: **5/1/2023**

Forms a part of Policy No.: **47 - GLO-307584**

Issued to: **SEE ATTACHED CERTIFICATE**

By: **Berkshire Hathaway Insurance Company**

## PRIMARY NONCONTRIBUTORY – OTHER INSURANCE PROVISION

**THIS ENDORSEMENT CHANGES THE POLICY. PLEASE READ IT CAREFULLY.**

**This endorsement modifies insurance provided under the following:**

**COMMERCIAL GENERAL LIABILITY POLICY  
COMMERCIAL UMBRELLA LIABILITY POLICY  
COMMERCIAL RETAINED LIMIT LIABILITY POLICY  
FOLLOW FORM EXCESS LIABILITY POLICY  
PRODUCTS/COMPLETED OPERATIONS LIABILITY POLICY**

The following Condition is added to the policy:

### **Primary Noncontributory – Other Insurance**

The insurance provided by this policy is primary, and will not seek contribution from any insurance available to an additional insured under this policy, provided that:

- (a) The additional insured is a named insured under such other insurance; and
- (a) Prior to an “occurrence” you agreed, in a fully executed written contract or agreement, that this insurance would be primary and would not seek contribution from any insurance available to that additional insured.

All other terms and conditions of this policy remain unchanged.

THIS ENDORSEMENT CHANGES THE POLICY. PLEASE READ IT CAREFULLY.

## BLANKET ADDITIONAL INSURED - PRIMARY AND NON-CONTRIBUTORY WITH OTHER INSURANCE

This endorsement modifies insurance provided under the following:

### BUSINESS AUTO COVERAGE FORM

#### PROVISIONS

- 1 The following is added to Paragraph A.1.c., Who Is An Insured, of SECTION II - COVERED AUTOS LIABILITY COVERAGE:

This includes any person or organization who you are required under a written contract or agreement between you and that person or organization, that is signed by you before the "bodily injury" or "property damage" occurs and that is in effect during the policy period, to name as an additional insured for Covered Autos Liability Coverage, but only for damages to which this insurance applies and only to the extent of that person's or organization's liability for the conduct of another "insured".

2. The following is added to Paragraph B.5., Other Insurance of SECTION IV - BUSINESS AUTO CONDITIONS:

Regardless of the provisions of paragraph a. and paragraph d. of this part 5. Other Insurance, this insurance is primary to and non-contributory with applicable other insurance under which an additional insured person or organization is the first named insured when the written contract or agreement between you and that person or organization, that is signed by you before the "bodily injury" or "property damage" occurs and that is in effect during the policy period, requires this

Notification to Others of Cancellation

Policy No.	Eff. Date of Pol.	Exp. Date of Pol.	Eff. Date of End.	Producer No.	Add'l. Prem	Return Prem.
47 - GLO-307584	5/1/2023	5/1/2024				

THIS ENDORSEMENT CHANGES THE POLICY. PLEASE READ IT CAREFULLY.

This endorsement modifies insurance provided under the:

Commercial General Liability Coverage Part  
Liquor Liability Coverage Part  
Products/Completed Operations Liability Coverage Part

- A. If we cancel this Coverage Part(s) by written notice to the first Named Insured for any reason other than nonpayment of premium, we will mail or deliver a copy of such written notice of cancellation:
- 1. To the name and address corresponding to each person or organization shown in the Schedule below; and
  - 2. At least 10 days prior to the effective date of the cancellation, as advised in our notice to the first Named Insured, or the longer number of days notice if indicated in the Schedule below.
- B. If we cancel this Coverage Part(s) by written notice to the first Named Insured for nonpayment of premium, we will mail or deliver a copy of such written notice of cancellation to the name and address corresponding to each person or organization shown in the Schedule below at least 10 days prior to the effective date of such cancellation.
- C. If notice as described in Paragraphs A. or B. of this endorsement is mailed, proof of mailing will be sufficient proof of such notice.

SCHEDULE	
Name and Address of Other Person(s) / Organization(s):	Number of Days Notice:
Those persons and organizations as stated in a certificate of	30
Insurance, on file with the insurer, as of the date of	
Cancellation.	

All other terms and conditions of this policy remain unchanged.

**POLICY NUMBER:** TC2J - CAP - 8E086819 (AOS); TJ - BAP - 8E086820; [[CAUPOL3]]  
**COMMERCIAL AUTO**  
**CA 04 44 03 10**

THIS ENDORSEMENT CHANGES THE POLICY. PLEASE READ IT CAREFULLY

**WAIVER OF TRANSFER OF RIGHTS OF RECOVERY  
AGAINST OTHERS TO US (WAIVER OF SUBROGATION)**

This endorsement modifies insurance provided under the following:

BUSINESS AUTO COVERAGE FORM  
BUSINESS AUTO PHYSICAL DAMAGE COVERAGE FORM  
GARAGE COVERAGE FORM  
MOTOR CARRIER COVERAGE FORM  
TRUCKERS COVERAGE FORM

With respect to coverage provided by this endorsement, the provisions of the Coverage Form apply unless modified by the endorsement.

This endorsement changes the policy effective on the inception date of the policy unless another date is indicated.

---

**Named Insured:** STANTEC CONSULTING

**Endorsement Effective Date:** 5/1/2023

---

**SCHEDULE**

---

**Name(s) Of Person(s) Or Organization(s):**

**WHERE REQUIRED BY WRITTEN CONTRACT**

Information required to complete this Schedule, if not shown above, will be shown in the Declarations.

---

**The Transfer Of Rights Of Recovery Against Others To Us** Condition does not apply to the person(s) or organization(s) shown in the Schedule, but only to the extent that subrogation is waived prior to the "accident" or "loss" under a contract with that person or organization.

CA 04 44 03 10



**WORKERS COMPENSATION  
AND  
EMPLOYERS LIABILITY POLICY**

**ENDORSEMENT WC 99 06 R3 (00)**

**POLICY NUMBER:** UB - 3P635310 (AOS); UB - 3P533004 (MA, WI)

**NOTICE OF CANCELLATION  
TO DESIGNATED PERSONS OR ORGANIZATIONS**

The following is added to **PART SIX - CONDITIONS:**

**Notice of Cancellation To Designated Persons Or Organizations**

If we cancel this policy for any reason other than non-payment of premium by you, we will provide notice of such cancellation to each person or organization designated in the Schedule below. We will mail or deliver such notice to each person or organization at its listed address at least the number of days shown for that person or organization before the cancellation is to take effect.

You are responsible for providing us with the information necessary to accurately complete the Schedule below. If we cannot mail or deliver a notice of cancellation to a designated person or organization because the name or address of such designated person or organization provided to us is not accurate or complete, we have no responsibility to mail, delivery or otherwise notify such designated person or organization of the cancellation.

**SCHEDULE**

**Name and Address of Designated Persons or Organizations:**

Name: Any person or organization with whom you have agreed in a written contract that notice of cancellation of this policy will be given, but only if:

1. You see to it that we receive a written request to provide such notice, including the name and address of such person or organization, after the first Named Insured receives notice from us of the cancellation of this policy; and
2. We receive such written request at least 14 days before the beginning of the applicable number of days shown in this endorsement.

Address: The address for that person or organization included in such written request from you to us.

**Number of Days Notice: 30**

**ALL OTHER TERMS AND CONDITIONS OF THIS POLICY REMAIN UNCHANGED.**



# CERTIFICATE OF LIABILITY INSURANCE

DATE (MM/DD/YYYY)

10/1/2024

2/28/2024

THIS CERTIFICATE IS ISSUED AS A MATTER OF INFORMATION ONLY AND CONFERS NO RIGHTS UPON THE CERTIFICATE HOLDER. THIS CERTIFICATE DOES NOT AFFIRMATIVELY OR NEGATIVELY AMEND, EXTEND OR ALTER THE COVERAGE AFFORDED BY THE POLICIES BELOW. THIS CERTIFICATE OF INSURANCE DOES NOT CONSTITUTE A CONTRACT BETWEEN THE ISSUING INSURER(S), AUTHORIZED REPRESENTATIVE OR PRODUCER, AND THE CERTIFICATE HOLDER.

**IMPORTANT:** If the certificate holder is an **ADDITIONAL INSURED**, the policy(ies) must have **ADDITIONAL INSURED** provisions or be endorsed. If **SUBROGATION** IS **WAIVED**, subject to the terms and conditions of the policy, certain policies may require an endorsement. A statement on this certificate does not confer rights to the certificate holder in lieu of such endorsement(s).

<b>PRODUCER</b> Lockton Companies 444 W. 47th Street, Suite 900 Kansas City MO 64112-1906 (816) 960-9000 kcasu@lockton.com	<b>CONTACT NAME:</b>	<b>FAX (A/C, No):</b>	
	<b>PHONE (A/C, No, Ext):</b>	<b>E-MAIL ADDRESS:</b>	
<b>INSURED</b> 1414100 STANTEC CONSULTING SERVICES INC. 410 17TH STREET SUITE 1400 DENVER CO 80202-4427	<b>INSURER(S) AFFORDING COVERAGE</b>		<b>NAIC #</b>
	<b>INSURER A:</b> Berkshire Hathaway Specialty Insurance Company		22276
	<b>INSURER B:</b> AIG Specialty Insurance Company		26883
	<b>INSURER C:</b>		
	<b>INSURER D:</b>		
	<b>INSURER E:</b>		
<b>INSURER F:</b>			

**COVERAGES****CERTIFICATE NUMBER:** 20331810**REVISION NUMBER:** XXXXXXXX

THIS IS TO CERTIFY THAT THE POLICIES OF INSURANCE LISTED BELOW HAVE BEEN ISSUED TO THE INSURED NAMED ABOVE FOR THE POLICY PERIOD INDICATED. NOTWITHSTANDING ANY REQUIREMENT, TERM OR CONDITION OF ANY CONTRACT OR OTHER DOCUMENT WITH RESPECT TO WHICH THIS CERTIFICATE MAY BE ISSUED OR MAY PERTAIN, THE INSURANCE AFFORDED BY THE POLICIES DESCRIBED HEREIN IS SUBJECT TO ALL THE TERMS, EXCLUSIONS AND CONDITIONS OF SUCH POLICIES. LIMITS SHOWN MAY HAVE BEEN REDUCED BY PAID CLAIMS.

INSR LTR	TYPE OF INSURANCE	ADDL INSD	SUBR WVD	POLICY NUMBER	POLICY EFF (MM/DD/YYYY)	POLICY EXP (MM/DD/YYYY)	LIMITS
	<b>COMMERCIAL GENERAL LIABILITY</b> <input type="checkbox"/> CLAIMS-MADE <input type="checkbox"/> OCCUR  GEN'L AGGREGATE LIMIT APPLIES PER: <input type="checkbox"/> POLICY <input type="checkbox"/> PRO-JECT <input type="checkbox"/> LOC <input type="checkbox"/> OTHER:			NOT APPLICABLE			EACH OCCURRENCE \$ XXXXXXXX DAMAGE TO RENTED PREMISES (Ea occurrence) \$ XXXXXXXX MED EXP (Any one person) \$ XXXXXXXX PERSONAL & ADV INJURY \$ XXXXXXXX GENERAL AGGREGATE \$ XXXXXXXX PRODUCTS - COMP/OP AGG \$ XXXXXXXX \$
	<b>AUTOMOBILE LIABILITY</b> <input type="checkbox"/> ANY AUTO <input type="checkbox"/> OWNED AUTOS ONLY <input type="checkbox"/> SCHEDULED AUTOS <input type="checkbox"/> HIRED AUTOS ONLY <input type="checkbox"/> NON-OWNED AUTOS ONLY			NOT APPLICABLE			COMBINED SINGLE LIMIT (Ea accident) \$ XXXXXXXX BODILY INJURY (Per person) \$ XXXXXXXX BODILY INJURY (Per accident) \$ XXXXXXXX PROPERTY DAMAGE (Per accident) \$ XXXXXXXX \$ XXXXXXXX
	<b>UMBRELLA LIAB</b> <input type="checkbox"/> OCCUR <b>EXCESS LIAB</b> <input type="checkbox"/> CLAIMS-MADE <input type="checkbox"/> DED <input type="checkbox"/> RETENTION \$			NOT APPLICABLE			EACH OCCURRENCE \$ XXXXXXXX AGGREGATE \$ XXXXXXXX \$ XXXXXXXX
	<b>WORKERS COMPENSATION AND EMPLOYERS' LIABILITY</b> ANY PROPRIETOR/PARTNER/EXECUTIVE OFFICER/MEMBER EXCLUDED? (Mandatory in NH) <input type="checkbox"/> Y / N If yes, describe under DESCRIPTION OF OPERATIONS below		N / A	NOT APPLICABLE			<input type="checkbox"/> PER STATUTE <input type="checkbox"/> OTH-ER E.L. EACH ACCIDENT \$ XXXXXXXX E.L. DISEASE - EA EMPLOYEE \$ XXXXXXXX E.L. DISEASE - POLICY LIMIT \$ XXXXXXXX
A	Professional Liab	N	N	47-EPP-308810 NO RETROACTIVE DATE	10/1/2023	10/1/2024	\$3,000,000 PER CLAIM/AGG INCLUSIVE OF COSTS
B	Contractors Pollution Liab			CPO8085428	10/1/2023	10/1/2025	\$3,000,000 PER LOSS/AGG

DESCRIPTION OF OPERATIONS / LOCATIONS / VEHICLES (ACORD 101, Additional Remarks Schedule, may be attached if more space is required)

RE: 2024 PAVEMENT CONDITION SURVEY. SURVEY OF ALL ROADS IN THE CITY OF OLATHE FOR THE PURPOSE OF PROVIDING AN UP TO DATE SCORE OF THE PAVEMENT CONDITION.

**CERTIFICATE HOLDER****CANCELLATION**

**20331810**  
CITY OF OLATHE  
100 E SANTE FE  
PO BOX 768  
OLATHE, KS 66051-0768

SHOULD ANY OF THE ABOVE DESCRIBED POLICIES BE CANCELLED BEFORE THE EXPIRATION DATE THEREOF, NOTICE WILL BE DELIVERED IN ACCORDANCE WITH THE POLICY PROVISIONS.

AUTHORIZED REPRESENTATIVE

© 1988-2015 ACORD CORPORATION. All rights reserved.

**EXHIBIT H**  
**Certificate of Good Standing to Conduct Business in Kansas**

**STATE OF KANSAS**  
**OFFICE OF**  
**SECRETARY OF STATE**  
**SCOTT SCHWAB**

I, SCOTT SCHWAB, Secretary of State of the state of Kansas, do hereby certify, that according to the records of this office.

Business Entity ID Number: 4365110

Entity Name: STANTEC CONSULTING SERVICES INC.

Entity Type: FOREIGN FOR PROFIT

State of Organization: NY

was filed in this office on November 16, 2009, and is in good standing, having fully complied with all requirements of this office.

No information is available from this office regarding the financial condition, business activity or practices of this entity.



In testimony whereof I execute this certificate and affix the seal of the Secretary of State of the state of Kansas on this day of January 12, 2024

**SCOTT SCHWAB**  
**SECRETARY OF STATE**

Certificate ID: 1292466 - To verify the validity of this certificate please visit <https://www.kansas.gov/bess/flow/validate> and enter the certificate ID number.