



Exterior materials shall match adjacent
Johnson County Family Lodge building



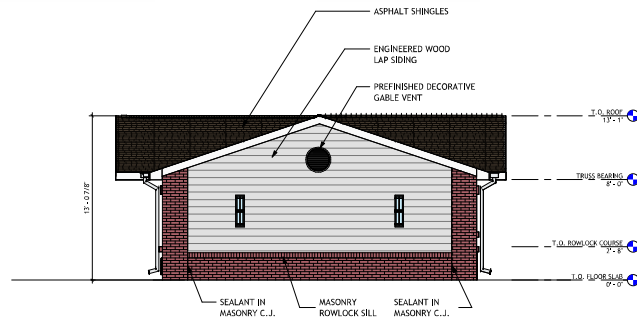


Exterior materials shall match adjacent
Johnson County Family Lodge building

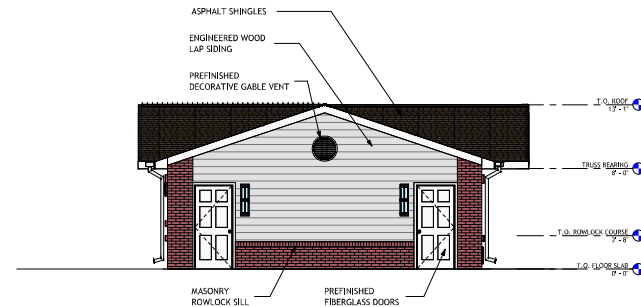


wnbarchitects

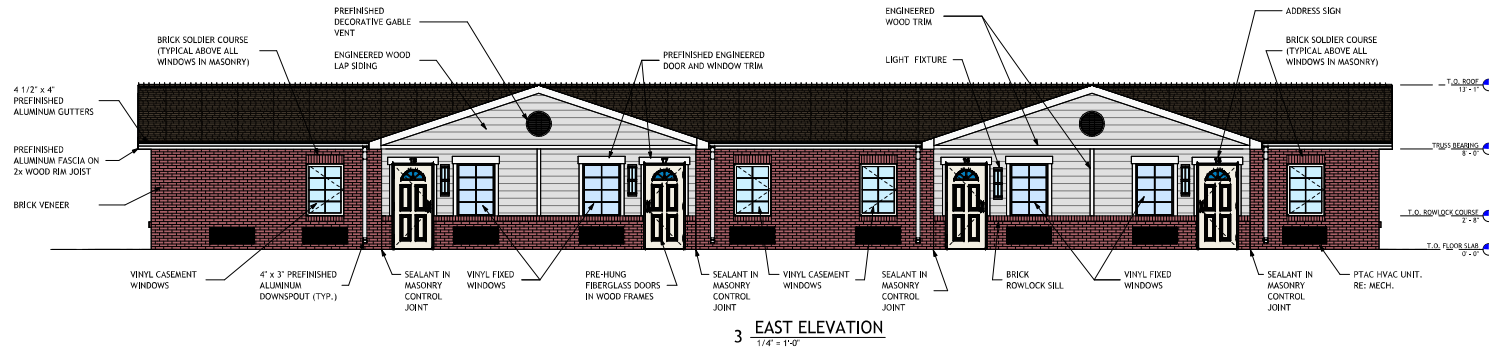
517 Midway
Kansas City, MO 64105
(816) 283-3331
www.wnbarchitects.com



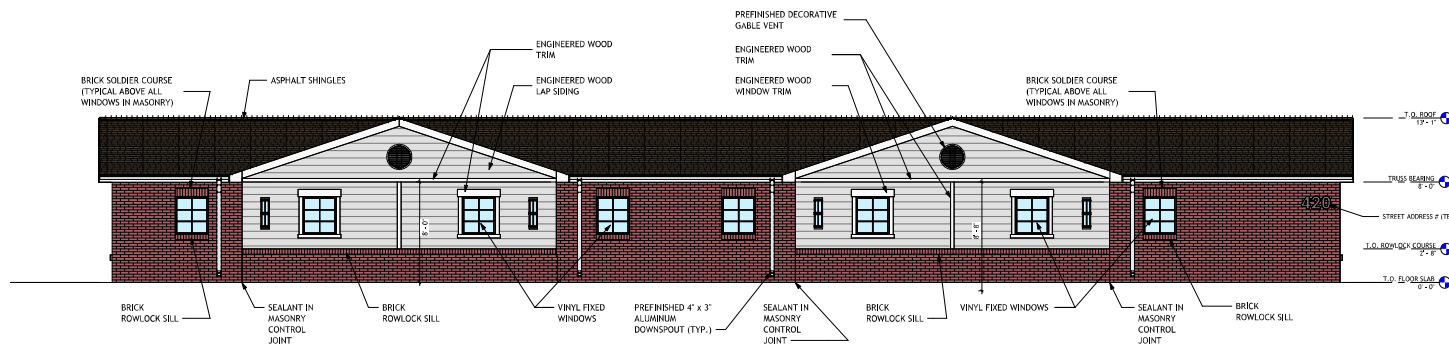
1 NORTH ELEVATION
1/4" = 1'-0"



2 SOUTH ELEVATION
1/4" = 1'-0"



3 EAST ELEVATION
1/4" = 1'-0"



4 WEST ELEVATION
1/4" = 1'-0"

OLATHE TRANSITIONAL HOUSING

THE SALVATION ARMY OF KANSAS AND WESTERN MISSOURI

SANTE FE AND WOODLAND