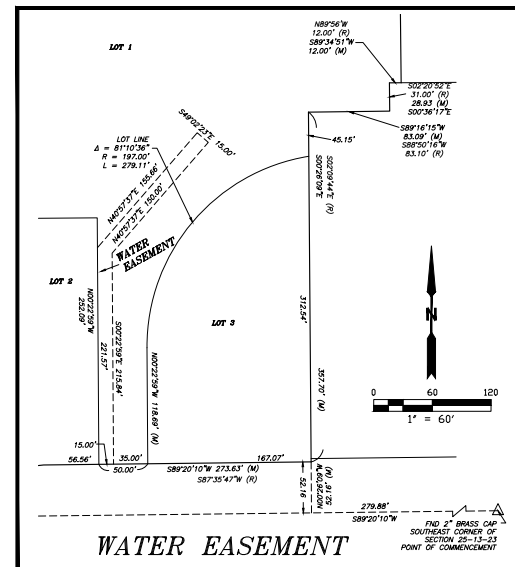
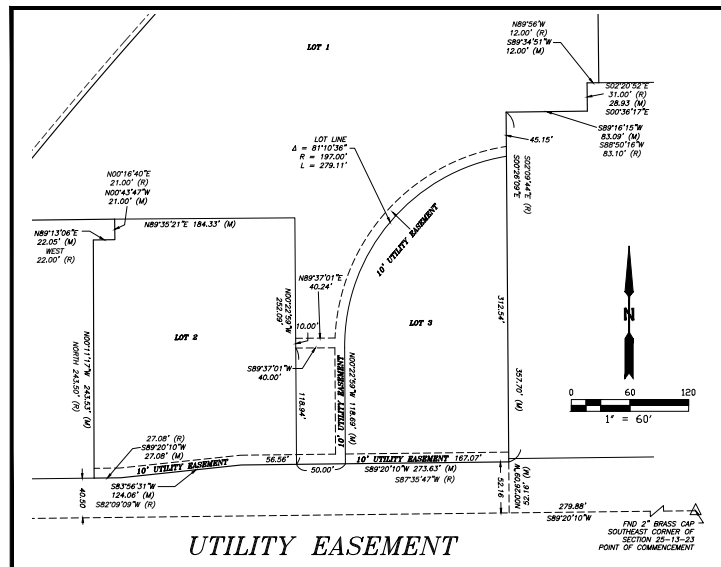
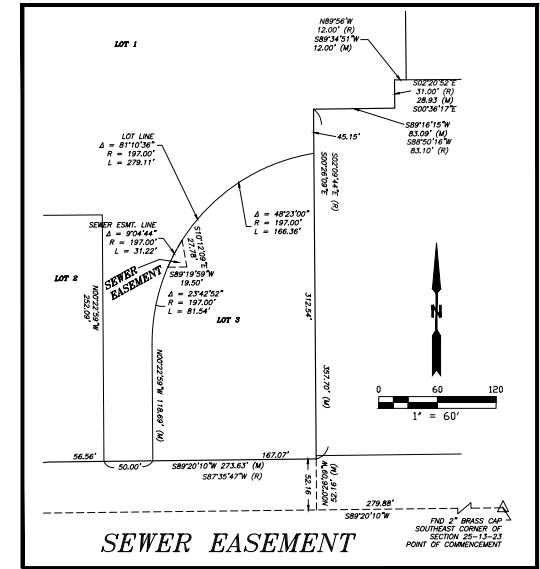
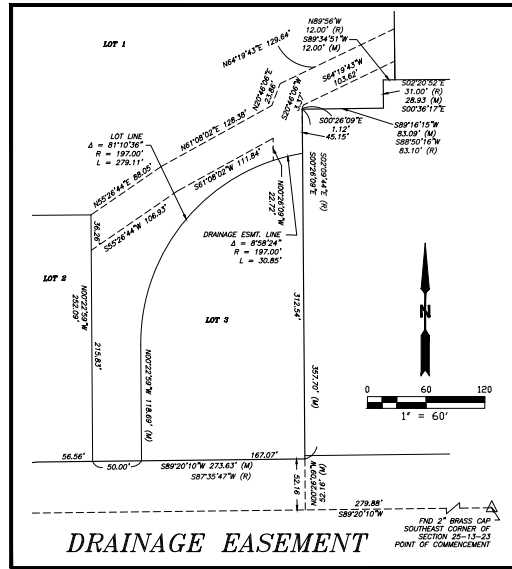
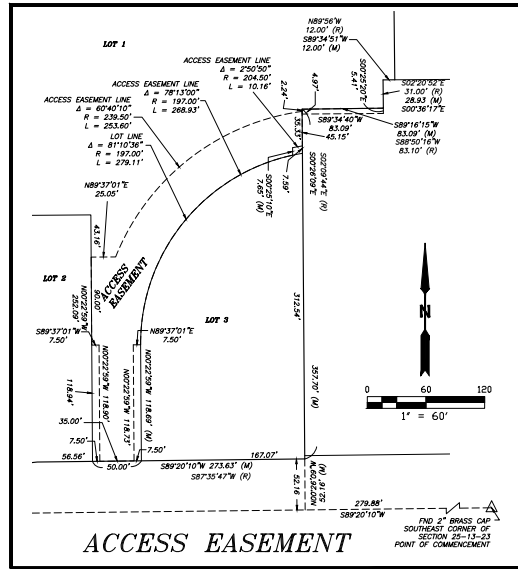


OLATHE ANIMAL CARE CAMPUS

A REPLAT OF LOT 1, JIFFY LUBE, A PLATTED SUBDIVISION, TOGETHER WITH 3 TRACTS OF LAND, LESS AND EXCEPTIONS, ALL WITHIN THE SOUTHEAST QUARTER OF THE SOUTHEAST QUARTER OF SECTION 25, TOWNSHIP 13 SOUTH, RANGE 25 EAST, IN THE CITY OF OLATHE, JOHNSON COUNTY, KANSAS



LEGEND	
FIND. 1/2" BAR W/ CAP "3HW 61"	+
FIND. PLUS CUT	x
FIND. SECTION CORNER (AS NOTED)	△
FIND. PROPERTY CORNER (AS NOTED)	⊙
SET 5/8" BAR W/ 2" ALUM CAP TIEING DESIGN GROUP CLS 195"	●
EXISTING EASEMENT LINES	---
NEW EASEMENT LINES DEDICATED BY THIS PLAT	---
SUBJECT PROPERTY LINE	---
PROPERTY LINE	---
RIGHT OF WAY LINES	---
MEASURED DISTANCES/BEARINGS	(M)
RECORD DISTANCES/BEARINGS	(R)

TREKK
DESIGN GROUP, LLC
1411 E. 104th St.
Kansas City, Mo. 64131
Tel (816) 874-4655
CERTIFICATE OF AUTHORITY
KANSAS NO. LS 195
jpowens@trekdesigngroup.com

EASEMENTS	
A PART OF THE SE/4 OF THE SE/4 OF SECTION 25-13-23 OLATHE, JOHNSON COUNTY, KANSAS	
SHEET 2 OF 2	
Project No.: 25-0035	Date: AUGUST 12, 2025
Ascd Dwg: 25-0035_REPLAT	Drawn By: J.M. POWERS