

EXHIBIT "A"

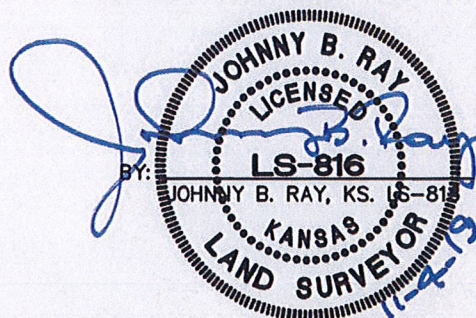
CITY CONSENT FOR SANITARY SEWER ENLARGEMENT PART OF THE NW 1/4 OF SECTION 3, T. 14 S., R. 24 E., IN THE CITY OF OLATHE, JOHNSON COUNTY, KANSAS.

LEGAL DESCRIPTION:

PART OF THE NORTHWEST QUARTER OF SECTION 3, TOWNSHIP 14 SOUTH, RANGE 24 EAST, IN THE CITY OF OLATHE, JOHNSON COUNTY, KANSAS, BEING MORE PARTICULARLY DESCRIBED AS FOLLOWS:

COMMENCING AT THE NORTHWEST CORNER OF THE NORTHWEST QUARTER OF SAID SECTION 3; THENCE N 87°53'37" E, ALONG THE NORTH LINE OF THE NORTHWEST QUARTER OF SAID SECTION 3, A DISTANCE OF 340.00 FEET TO A POINT ON THE EAST LINE OF AN ENLARGEMENT OF CONSOLIDATED MAIN SEWER DISTRICT OF JOHNSON COUNTY, KANSAS, AS RECORDED IN BOOK 4556 AT PAGE 168, SAID POINT ALSO BEING THE POINT OF BEGINNING; THENCE CONTINUING N 87°53'37" E, ALONG THE NORTH LINE OF THE NORTHWEST QUARTER OF SAID SECTION 3, A DISTANCE OF 809.26 FEET; THENCE S 1°57'27" E, A DISTANCE OF 1467.75 FEET TO THE NORTHEAST PLAT CORNER OF WILLOW CROSSING, SECOND PLAT, A PLATTED SUBDIVISION OF LAND IN THE CITY OF OLATHE, JOHNSON COUNTY, KANSAS; THENCE ALONG THE NORTH PLAT LINE OF SAID WILLOW CROSSING, SECOND PLAT FOR THE FOLLOWING FOUR(4) COURSES; THENCE S 88°02'32" W, A DISTANCE OF 402.46 FEET; THENCE S 83°17'39" W, A DISTANCE OF 387.59 FEET; THENCE NORTHERLY ON A CURVE TO THE LEFT, SAID CURVE HAVING AN INITIAL TANGENT BEARING OF N 11°32'34" W AND A RADIUS OF 525.00 FEET, AN ARC DISTANCE OF 49.16 FEET; THENCE S 73°05'31" W, A DISTANCE OF 10.83 FEET TO A POINT ON THE EAST LINE OF SAID ENLARGEMENT OF CONSOLIDATED MAIN SEWER DISTRICT OF JOHNSON COUNTY, KANSAS; THENCE N 1°56'35" W, ALONG THE EAST LINE OF SAID ENLARGEMENT OF CONSOLIDATED MAIN SEWER DISTRICT OF JOHNSON COUNTY, KANSAS, A DISTANCE OF 1452.51 FEET TO THE POINT OF BEGINNING, CONTAINING 27.3947 ACRES, MORE OR LESS.

I HEREBY CERTIFY THAT THIS REAL
PROPERTY LEGAL DESCRIPTION HAS
BEEN PREPARED BY ME OR UNDER
MY DIRECT SUPERVISION.



\\PHELPS-SERVER\Projects\P\180723\Dwg\Easements\CITY CONSENT SAN ENLARGEMENT.dwg Layout:1 Nov 01, 2019 - 3:40pm

SHEET 1 OF 2



PLANNING
ENGINEERING
IMPLEMENTATION

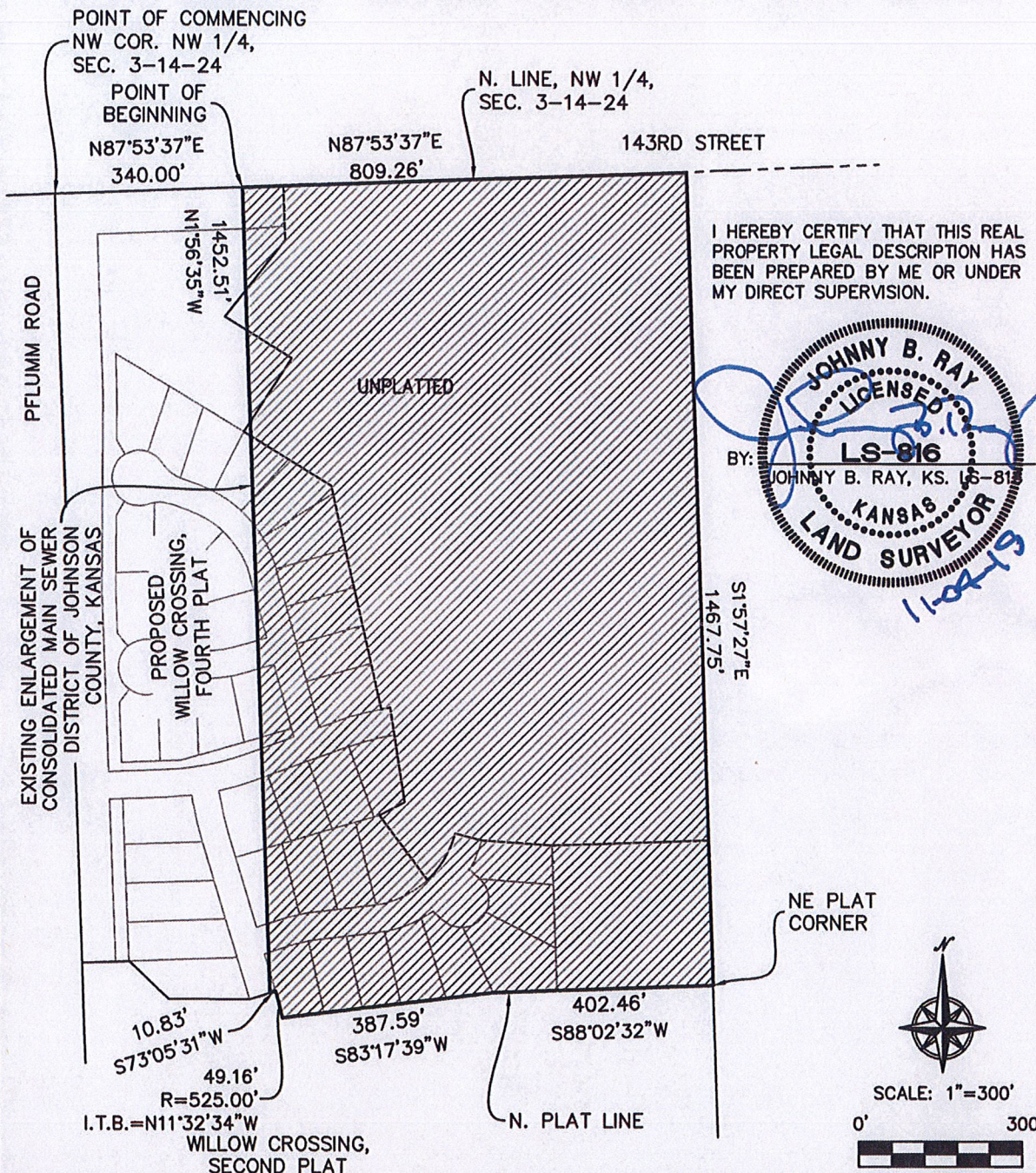
PHELPS ENGINEERING, INC (913) 393-1155
1270 N. Winchester Fax (913) 393-1166
Olathe, Kansas 66061 www.phelpsengineering.com

CERTIFICATE OF AUTHORIZATION KANSAS LAND
SURVEYING - LS-82
ENGINEERING - E-391
CERTIFICATE OF AUTHORIZATION MISSOURI
LAND SURVEYING-2007001128
ENGINEERING-2007005058

PROJECT NO. 180723
DATE: 11/1/19
BY: MAM

EXHIBIT "A"

**CITY CONSENT FOR SANITARY SEWER ENLARGEMENT
PART OF THE NW 1/4 OF SECTION 3, T. 14 S., R. 24 E.,
IN THE CITY OF OLATHE, JOHNSON COUNTY, KANSAS.**



\\PHELPS-SERVER\Projects\P\180723\Drawings\Easements\CITY CONSENT SAN ENLARGEMENT.dwg Layout:2 Nov 04, 2019 - 3:59pm SHEET 2 OF 2



PLANNING
ENGINEERING
IMPLEMENTATION

PHELPS ENGINEERING, INC (913) 393-1155
1270 N. Winchester Fax (913) 393-1166
Olathe, Kansas 66061 www.phelpsengineering.com

CERTIFICATE OF AUTHORIZATION KANSAS LAND
SURVEYING - LS-82
ENGINEERING - E-391
CERTIFICATE OF AUTHORIZATION MISSOURI
LAND SURVEYING-2007001128
ENGINEERING-2007005058

PROJECT NO. 180723
DATE: 11/1/19
BY: MAM