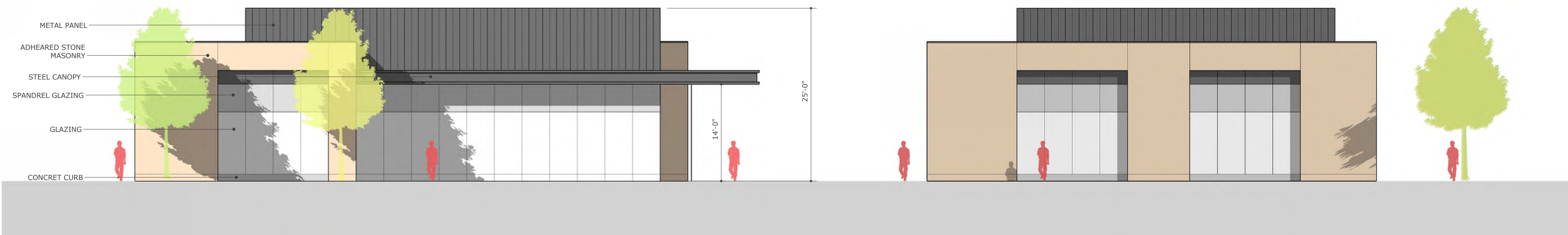


A
1 MULTI-TENANT RETAIL CONCEPT
1/8" = 1'-0"

CATEGORY 1 MATERIALS: 72%
CATEGORY 2 MATERIALS: 28%



A
2 RESTAURANT CONCEPT
1/8" = 1'-0"

CATEGORY 1 MATERIALS: 75%
CATEGORY 2 MATERIALS: 25%

*ALL ELEVATIONS ARE CONCEPTUAL AND SUBJECT TO CHANGE. MATERIAL PERCENTAGES TAKEN FROM ELEVATIONS.

Project
Mentum Development
Olathe, KS 66061

Prepared For
Woodbury Corporation
2733 East Parleys Way, Suite 300
Salt Lake City, UT 84109

EPC Real Estate Group
8001 Metcalf Ave, Suite 300
Overland Park, KS 66204

Contract No: 18.70089.00



Hellmuth, Obata + Kassabaum, Inc.
300 West 22nd Street
Kansas City, MO 64108 USA
t +1 816 472 3360 f +1 816 472 2100

All reproduction & intellectual property rights reserved © 2017

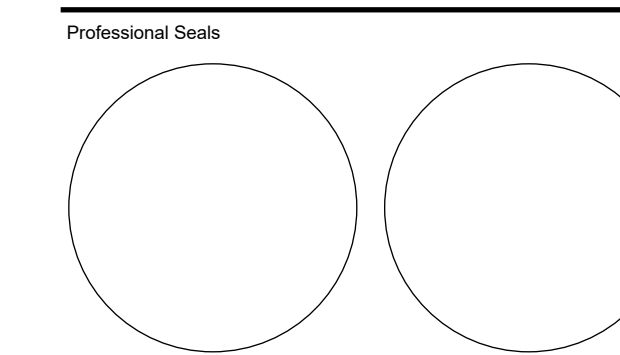
In Association with

Phelps Engineering, Inc.
Civil Engineer
1270 N. Winchester
Olathe, KS 66061

Henderson Engineers
Electrical
1801 Main Street, Suite 300
Kansas City, MO 64108

Studio A Architecture LLC
Residential Architecture
123 Southwest Boulevard
Kansas City, MO 64108

Key Plan



No.	Description	Date
1	PDP Pre-Application Meeting	11/13/2018
2	PDP Comment Response	12/20/2018

Date of First Issue: 11/13/2018
Project No: 18.70089.00
Sheet Title

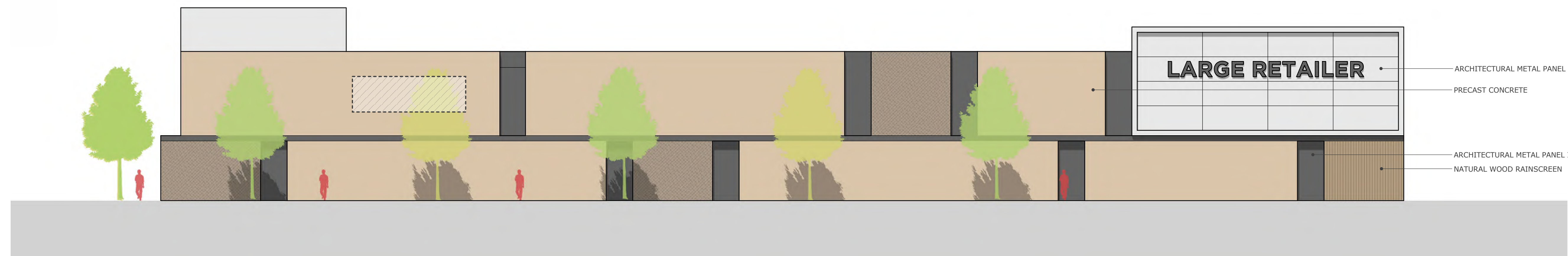
**CONCEPT
ELEVATIONS**

Original drawing is 42 x 30. Do not scale contents of this drawing.

Sheet Number

A001

A003



CATEGORY 1 MATERIALS: 63%
CATEGORY 2 MATERIALS: 37%



CATEGORY 1 MATERIALS: 72%
CATEGORY 2 MATERIALS: 28%

A004