

RESOLUTION NO. 19-1014

A RESOLUTION OF THE GOVERNING BODY OF THE CITY OF OLATHE, KANSAS ESTABLISHING THE DATE AND TIME OF A PUBLIC HEARING REGARDING THE ESTABLISHMENT OF A REDEVELOPMENT DISTRICT PURSUANT TO K.S.A. 12-1770 *ET SEQ.*

BE IT RESOLVED BY THE GOVERNING BODY OF THE CITY OF OLATHE, KANSAS:

Section 1. The City of Olathe, Kansas (the “City”) is considering the establishment of a redevelopment district pursuant to K.S.A. 12-1770 *et seq.*, as amended (the “Act”).

Section 2. Notice is hereby given that a public hearing will be held by the City to consider establishment of a redevelopment district on **March 19, 2019** in the City Council Chambers located in Olathe City Hall, 100 E. Santa Fe Street, Olathe, Kansas, commencing at 7:00 p.m., or as soon thereafter as may be heard.

Section 3. A map of the proposed redevelopment district is attached hereto as **Exhibit A**. The boundaries of the proposed redevelopment district are legally described as shown on **Exhibit B** hereto.

Section 4. The proposed redevelopment district plan for the proposed redevelopment district (the “District Plan”) consists of one or more redevelopment project areas, the name(s) and boundaries of which will be defined at the time of the redevelopment project plan(s), and is described in a general manner as follows:

Acquisition of real property, demolition of certain existing improvements thereon, and the development and redevelopment thereof to consist of some or all of the following uses and improvements, without limitation: major multi-sport athletic complex, sports, entertainment, restaurant, retail, office, medical office, hotel and hospitality, residential (multi-family, senior-living, independent-living, condo, and/or other residential uses), public space, open space, and/or other similar, related or appurtenant uses, any other structure or use (including, but not limited to, commercial, residential, non-profit, governmental and/or community uses), along with all associated site work, infrastructure, utilities, storm water control, access, street improvements, landscaping, lighting, parking facilities, and any other items allowable under K.S.A. 12-1770 *et seq.*, as amended.

Section 5. A description and map of the proposed redevelopment district are available for inspection and copying in the offices of the City Clerk, Olathe City Hall, 100 E. Santa Fe Street, Olathe, Kansas, Monday through Friday (other than holidays) between 8:00 a.m. and 5:00 p.m.

Section 6. The governing body of the City will consider the findings necessary for the establishment of a redevelopment district after conclusion of the public hearing.

Section 7. The City Clerk is hereby authorized and directed to publish this resolution once in the official city newspaper not less than one week or more than two weeks preceding the date set for the public hearing. The City Clerk is also authorized and directed to mail a copy of this resolution via certified mail, return receipt requested to the board of county commissioners, the board of education of any school district levying taxes on property within the proposed redevelopment district, and to each

owner and occupant of land within the proposed redevelopment district, not more than 10 days following the date of the adoption of this Resolution.

Section 8. This Resolution shall become effective upon its adoption by the Governing Body.

[Balance of page intentionally left blank]

ADOPTED this 5th day of February, 2019.

[SEAL]

Attest:

Mayor

City Clerk

EXHIBIT A

MAP OF PROPOSED REDEVELOPMENT DISTRICT

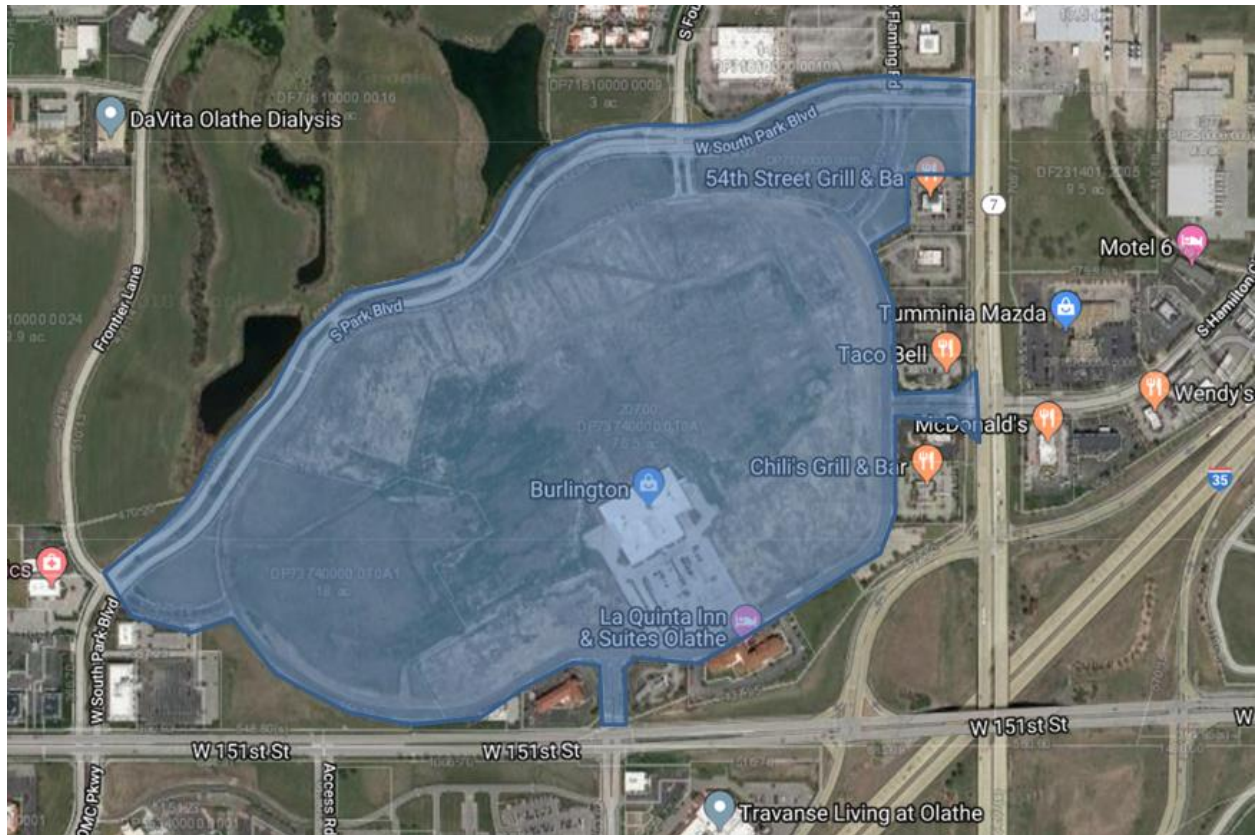


EXHIBIT B

LEGAL DESCRIPTION OF PROPOSED REDEVELOPMENT DISTRICT

TRACT 1:

TRACT A, THE GREAT MALL, A SUBDIVISION IN THE CITY OF OLATHE, JOHNSON COUNTY, KANSAS, ACCORDING TO THE RECORDED PLAT THEREOF, FILED OCTOBER 31, 1996 IN PLAT BOOK 97 PAGE 31.

TRACT 2:

LOTS 9, 10, 11 AND 12, THE GREAT MALL, A SUBDIVISION IN THE CITY OF OLATHE, JOHNSON COUNTY, KANSAS, ACCORDING TO THE RECORDED PLAT THEREOF, FILED OCTOBER 31, 1996 IN PLAT BOOK 97 PAGE 31.

TRACT 3:

LOT 1, THE GREAT MALL, 2ND PLAT, A SUBDIVISION IN THE CITY OF OLATHE, JOHNSON COUNTY, KANSAS, A REPLAT OF LOT 7 AND 8 OF THE GREAT MALL SUBDIVISION, ACCORDING TO THE RECORDED PLAT THEREOF, FILED JUNE 24, 2004 AS DOCUMENT NO. 20040624-0011867, IN BOOK 200406 PAGE 11867.