

Garmin: Campus Sign Locations

1200 E. 151st Street
 Olathe, Kansas 66062

DATE: 04/11/2018
 DRAWN BY: J. HARRIS
 CHECKED BY: J. HARRIS
 PROJECT: GARMIN CAMPUS
 SHEET: 15 OF 23
 SCALE: AS SHOWN
 PROJECT LOCATION: 1200 E. 151ST STREET, OLATHE, KS 66062

PROJECT DESCRIPTION: GARMIN CAMPUS SIGNAGE
 PROJECT LOCATION: 1200 E. 151ST STREET, OLATHE, KS 66062
 PROJECT NUMBER: 18-001
 PROJECT DATE: 04/11/2018
 PROJECT STATUS: IN PROGRESS

NOT FOR CONSTRUCTION

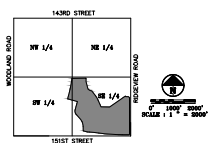
Author: J. Harris Date: _____

Project No: 18000
 Set Issue Date: 04/11/2018

GARMIN LEGAL DESCRIPTION:

LOT 1, GARMIN PROPERTIES PHASE 3, A SUBDIVISION IN THE CITY OF OLATHE, JOHNSON COUNTY, KANSAS.
 AND
 ALL OF LOT 1 AND THE WEST 1/2 OF VACATED MANHOLE PLATE ADJACENT TO THE EAST AS SET OUT IN VACATION ORDINANCE RECORDED IN BOOK 200504, PAGE 00900 AND THE SOUTH 1/2 OF VACATED MANHOLE CIRCLE ADJACENT TO THE NORTH AS SET OUT IN VACATION ORDINANCE RECORDED IN BOOK 200904, PAGE 00201, GARMIN PROPERTIES PHASE 1, A SUBDIVISION IN THE CITY OF OLATHE, JOHNSON COUNTY, KANSAS.
 AND
 ALL OF LOT 1 AND THE NORTH 1/2 OF VACATED MANHOLE CIRCLE ON THE SOUTH AS SET OUT IN VACATION ORDINANCE RECORDED IN BOOK 200904, PAGE 00201, GARMIN PROPERTIES PHASE 2, A SUBDIVISION IN THE CITY OF OLATHE, JOHNSON COUNTY, KANSAS.
 AND
 ALL OF LOTS 2 AND 4 AND THE NORTH 1/2 OF VACATED MANHOLE CIRCLE ADJACENT TO LOT 6 ON THE SOUTH, AS SET OUT IN VACATION ORDINANCE RECORDED IN BOOK 201004, PAGE 00201, GATEWAY BUSINESS PARK FIRST PLAT, A SUBDIVISION IN THE CITY OF OLATHE, JOHNSON COUNTY, KANSAS.
 AND
 LOT 1 AND THE EAST 1/2 OF VACATED MANHOLE PLATE ADJACENT TO THE WEST AS SET OUT IN VACATION ORDINANCE RECORDED IN BOOK 200404, PAGE 00201, OLATHE MEDICAL CLINIC, A SUBDIVISION IN THE CITY OF OLATHE, JOHNSON COUNTY, KANSAS.
 AND
 TRACT A, GARMIN PROPERTIES PHASE 2, A SUBDIVISION IN THE CITY OF OLATHE, JOHNSON COUNTY, KANSAS.

LEGEND:
 ——— PROPOSED CURB & GUTTER
 - - - - - EXISTING PROPERTY LINE
 - - - - - PROPOSED PROPERTY LINE



LOCATION MAP SECTION 1-14-23

