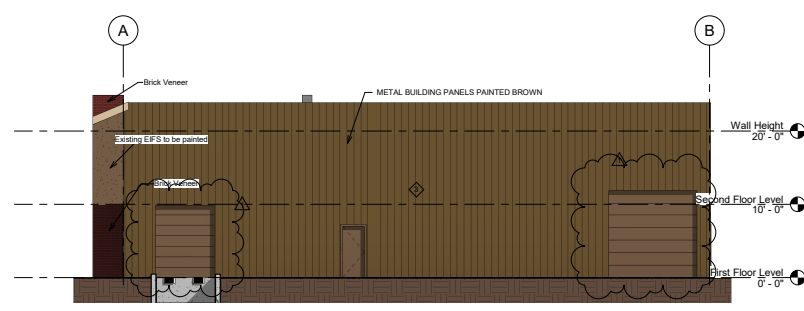


① East Color
1/8" = 1'-0"



③ West Color
1/8" = 1'-0"

OLATHE COMPOSITE DESIGN STANDARDS

OLATHE UDO BUILDING DESIGN CATEGORY 1"
OLATHE UDO SITE DESIGN CATEGORY 6
PRIMARY FACADES: NORTH & EAST
MATERIALS TO BE MIN.: CAT. #1 = 20% / CAT. #2 = 60% / CAT. #3 = 20%
THIS IS A MAJOR FAÇADE IMPROVEMENT FOR AN EXISTING BUILDING

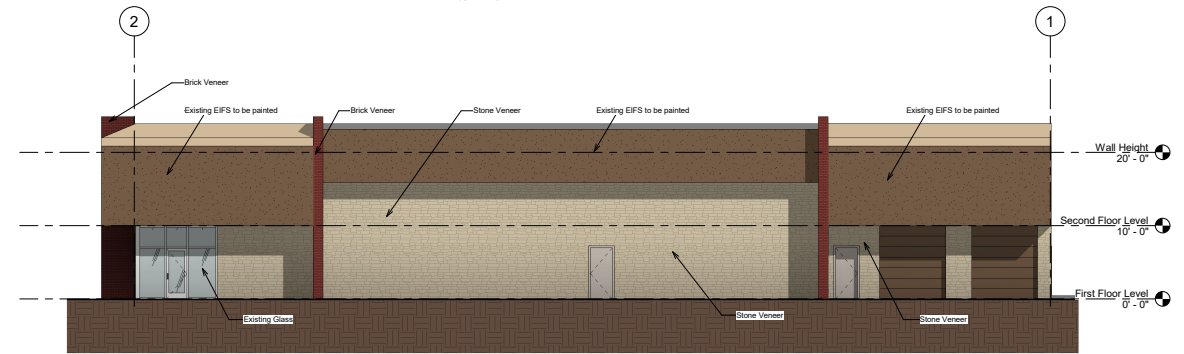
NORTH ELEVATION (PRIMARY FAÇADE)
TOTAL WALL SURFACE AREA = 2,877 SQ. FT.
(100% CATEGORY ONE MATERIALS)
CLEAR GLASS WINDOWS = 110 SQ. FT. (4%)
(MATERIAL CATEGORY #1)
STONE VENEER = 1,610 SQ. FT. (56%)
(MATERIAL CATEGORY #1)
BRICK VENEER = 40 SQ. FT. (2%)
(MATERIAL CATEGORY #3)
EIFS = 1,125 SQ. FT. (38%)

EAST ELEVATION (PRIMARY FAÇADE)
TOTAL WALL SURFACE AREA = 1,930 SQ. FT.
(100% CATEGORY ONE MATERIALS)
CLEAR GLASS WINDOWS = 312 SQ. FT. (16%)
(MATERIAL CATEGORY #1)
STONE VENEER = 815 SQ. FT. (43%)
(MATERIAL CATEGORY #1)
BRICK VENEER = 40 SQ. FT. (2%)
(MATERIAL CATEGORY #3)
EIFS = 751 SQ. FT. (39%)

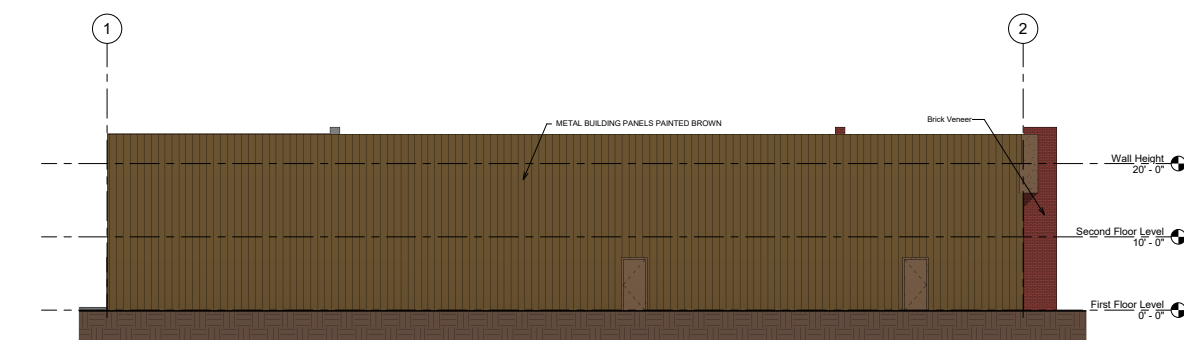
SOUTH ELEVATION (EXISTING WALL)
TOTAL WALL SURFACE AREA = 2,877 SQ. FT.
PAINTED METAL PANELS (EXISTING) = 2,877 SQ. FT. (100%)

WEST ELEVATION (EXISTING WALL)
TOTAL WALL SURFACE AREA = 1,930 SQ. FT.
PAINTED METAL PANELS (EXISTING) = 1,930 SQ. FT. (100%)

FAÇADE EXPRESSION TOOLS
THE PRIMARY FACADES HAVE:
1. WALL OFFSETS
2. WALL PROJECTIONS
3. INCREASED MATERIAL QUALITY



② North Color
1/8" = 1'-0"



④ South Color
1/8" = 1'-0"

scharhag
HERMAN SCHARHAG COMPANY ARCHITECTS

6247 Brookside Blvd, #204 Kansas City, Mo 64113
Phone: 816-866-5055 Scharhag@aol.net

Copyright 2017 Herman A. Scharhag Co., Architects.
All Rights Reserved. No part of these drawings may be
reproduced or used in any form for any mechanical or
electrical means, without written permission.

Owner Remodeling for
707 LINDENWOOD
PRELIMINARY DEVELOPMENT PLAN

J. Jeffrey Schneider Mo. License A-4225
Herman Scharhag Co., Arch. Corp. of Authority 000002

PDP Comments		Date 1
No.	Description	Date
Revision Schedule		

Colored
Elevations

Project number 2143
Date 02.26.2019

A202

Scale 1/8" = 1'-0"

7/26/2019 3:08:04 PM